

Back to Heidelberg Municipality

Back to Heidelberg
Municipality

SOUVENIR

HEIDELBERG
OLD and NEW

1860 - 1933

PRICE

6 PENCE

Issued by the HEIDELBERG
RELIEF ORGANISATION
(Authorised by the Charities Board)

Our looking backward on the future is past!
May make a bridge, which is more than
We had, we want not still when we continue
The future past with what the present brings.
John Kendrick Rhoads.

Introduction

This Booklet, though it appears under the comprehensive title of "Heidelberg Old and New," barely touches the fringe of our Municipality's interesting and romantic history. Heidelberg holds a prominent position in the records of this State as its oldest Municipality and one of the earliest settlements. There was settlement on the Lower Plenty before any land was sold.

There are those who have spent much time in study and research affecting the settlement, growth and development of this district, who possess ample material on which to base a volume recording a fascinating story of the grit and perseverance of those pioneers whose confidence and foresight has been justified in the revelation of New Heidelberg as we know it to-day.

The Melbourne Centenary Celebrations are at hand, and if this publication should suggest to an able writer the production of an ambitious volume worthy of the subject touched upon, then its issue will have achieved more than it originally sought, namely, to help through the Heidelberg Relief Organisation those to whom Fate has been unkind.

Even an unpretentious effort of this kind cannot be accomplished single-handed, therefore to those who made this booklet possible—the contributors and advertisers—thanks are due, and are hereby extended by

THE COMPILER,
(J.W.V.)

March, 1933.

BACK TO HEIDELBERG MUNICIPALITY

Heidelberg Old and New

Heidelberg was proclaimed a District on the 12th day of October, 1860, and a Shire on the 27th day of January, 1871.

The Shire of Heidelberg Relief Organisation

(Authorised by the Charities Board)

President:

CR. JOHN COATE, J.P., Fairfield.

Deputy-President:

P. J. ADAMS, Esq., J.P., Alphington.

Vice-Presidents:

J. BENNETT, Esq., Alphington. CR. C. JESSOP, Greensborough.
CR. NELLIE G. IBBOTT, Ivanhoe.

Hon. Treasurer:

F. PHILLIPS, Esq., Shire Hall, Heidelberg.

Hon. Secretaries:

REX MATTHEWS, Esq., Shire Hall, Heidelberg. H. P. KIRWAN, Esq., Shire Hall, Heidelberg.
(Phone: Heid. 71.) (Phone: Heid. 71.)

Bazaar Organiser:

CR. N. G. IBBOTT, Belmont Road, Ivanhoe.
(Phone: Ivan. 540.)

Carnival Organiser:

CHAS. HORTON, Esq., Shire Hall, Heidelberg.
(Phone: Heid. 71.)

BACK TO HEIDELBERG MUNICIPALITY

Heidelberg in the Forties



INTERESTING particulars of municipal government during the remote period covered between 1840 and 1860 have been gathered from reliable data by a well-known resident of Heidelberg.

It was probably in the year 1840 that the first attempt at local government came into existence in this State. The first method of administering roads was by means of a trust, and three gentlemen—Messrs. Wm. Vernier, Thos. Wills and Joseph Hawdon—appear as the first trustees, but whether appointed by the Government or elected by the residents is not in evidence. Mr. Vernier held an important public position, and Messrs. Hawdon and Wills, both men of means, resided at Banyule, Heidelberg, and Lucerne Crescent, Alphington, respectively. The district under the control of this trust commenced at the confines of Melbourne, near the corner of Spring and Victoria Streets. This trust was in control of the one outlet road from Melbourne, known as "Heidelberg" Road. Up to 1845 the upkeep of this road was provided for by the Government of New South Wales, the trustees supervising the expenditure.

Rates and tolls are first mentioned in 1845. From a letter sent to Messrs. Brown and McArthur, owners of Hartlands and Charterisville Estates respectively, from the trustees it is gathered the request was made to levy an assessment on the landowners and also to establish a toll at the Merri Creek. The letter is addressed "To Wm. Vernier, Thos. Wills

and Joseph Hawdon, Esquire, Trustees of the Parish Road from the Town of Melbourne to the River Plenty passing through the village of Warringal."

In 1846 the personnel of the Trust alters, Mr. Hawdon having as his colleagues Dr. R. Martin, of "Viewbank," Heidelberg, and Mr. P. Stevenson, of Chelsworth Estate. The income of the trustees had reached £186/15/6; in 1847 it increased to £223/19/6, £13 of which represented toll dues. In 1848 the revenue reached £600.

Towards the end of 1848 the crossing place (or causeway as it was called in those days) over the Merri Creek was built. This crossing place lies several hundred yards south of the present bridge, and was built of bluestone. Towards the construction of this work the Government contributed £100, the balance being raised by public subscription. Shortly after the work had been completed a heavy flood swept the bulk of it away.

In 1850 the trustees were Messrs. Thos. Wills, Jos. Hawdon, R. Martin, P. C. Stevenson and D. C. McArthur. In 1852, after much correspondence, the Lieutenant-Governor of the Colony agreed to the construction of a bridge over the Merri Creek. After the bridge was built it showed signs of cracking, and experts expressed the opinion that the stone balustrading which at that time surmounted it was too heavy, so it was removed and the iron railing substituted. The foundation stone—a block of white marble with the names of the trustees engraved thereon—formed portion of the wreckage cast aside, and it was

BACK TO HEIDELBERG MUNICIPALITY

ultimately used as a doorstep at the house of one of the trustees! "To what base uses may we return!"

In 1853 the first Act dealing with local government in this Colony was passed, being entitled "An Act for improving and making the roads in the Colony of Victoria." Evidently at this period times were very bad, as labourers were paid only 3/- a day!

Attention was drawn, in 1856, to the imperfectly formed road to the punt (Banksia Street). Mr. Ricardo (afterwards M.L.A. for South Bourke) drew the Central Board's attention to the neglect of the local trustees. Much friction ensued between the residents and trustees, but eventually a wooden bridge was constructed over the Darebin Creek.

Rosanna Road comes under notice in 1857, a request being made to the Trust for the extension of the Lower Road through Rosanna Estate.

The township of Heidelberg, although laid out at a much earlier date, did not come into existence till about 1858. It was in this that a toll gate was established at Plenty Bridge. A proposal was made to deviate the Lower Road, or Mount Eagle Road as it was formerly called, in order to skirt the hill in Hartlands Estate and thus obviate the necessity for the deep cutting required to ease the grade, and it was not until 1860 that the Hon. J. H. Brooke, Minister for Lands, who lived in Eaglemont House, decided that the Mount Eagle cutting should be proceeded with and the material therefrom used to raise Banksia Street.

The friction between residents and trustees previously referred to resulted in

Heidelberg being proclaimed a Road District; this was brought about by a section of the trustees, led by Mr. McArthur, insisting upon the roadway to the south of Banksia Street being constructed in lieu of one on the north leading to the new bridge from the village. An indignation meeting was held at the Sir Henry Barkly Hotel, and a deputation appointed to present a memorial to the Government, petitioning to have Heidelberg proclaimed a Road Board, and to urge that Banksia Street be constructed instead of Mount Eagle Road. Both roads in dispute were made ultimately.

The method of electing the trustees was to call a public meeting at the local hotel, each candidate being allowed to address the meeting for five minutes. A vote was taken, and the company was then entertained at the expense of the successful candidates.

The members of the new Road Board elected were Dr. R. Martin (chairman), Dr. Butler, Messrs. Lawrence, Wadson, William Lewis, John Greenaway, James Graham (later M.L.C.), treasurer, J. H. Brooke, M.L.A., Wm. Davies, John Sutherland, and R. G. Durham (secretary).

This closed the first phase of the pioneering movement in municipal government in Victoria.

Watson & Houghton

Auctioneer, Land and Estate Agents, Sworn Valuer and Insurance Agents.

Phone, Heidelberg 34 - - - At Any Time
86 MOUNT ST., HEIDELBERG.



A BUSY STREET IN GREENSBOROUGH

IVANHOE

IVANHOE

Mrs. HEBDITCH'S

THE HOME OF HIGHEST QUALITY FRUIT, CONFECTIONERY, ICE CREAM & ICE BLOCKS

The largest and most modern Electric Ice Block Plant in the District

All Ice Blocks made from Pure Fruit Juice

Try our Special CREAM Ice Block, made from Pure Fresh Cream.

125 HEIDELBERG ROAD (Opp. Sharp's Garage)

BACK TO HEIDELBERG MUNICIPALITY

Fairfield in Black and White



FAIRFIELD as we know it today—with its long, wide streets and neat houses, busy shopping centre and industrial activity—affords a striking contrast to the Fairfield of a much earlier period. It taxes one's credulity to be told there was a camping ground of aborigines by a swamp west of Rathmines Street and north of Separation Street. Until a few years ago there was to be seen an old tree from which was cut the bark for making a canoe. On a block of land opposite the railway station—on part of which Youen's Hall was built—there was an old tree, which was believed to have been associated with aboriginal corroborees. There were also many camping grounds and sleeping caves on the banks of the Merri Creek and the Yarra at Studley Park.

Above Cook's boat shed on the Yarra is a stone ford used by the blacks; when the river is low it can be felt by the boats as they pass over. At this spot, a little distance from the banks, may be found camp ovens, indicating this particular spot on the river had been a camping place of the blacks.

When Fairfield became settled by white people their chief interests were the raising of sheep and cattle. The first two houses built are still standing in Separation Street; at the time of their erection they had to be heavily barred and bolted, as blacks were still numerous in the district.

Fairfield's main road (to Heidelberg) was built by convict labour under the New South Wales Government; it crossed the creek 500 yards further down and met the present road at the Fairfield Reserve. The stone bridge over the Merri Creek was also built by convict labour, and there were toll gates on Heidelberg Road.

From toll gates to railways leaves a big gap in Fairfield's history, and much could be written on the long struggle to secure adequate transport facilities for Heidelberg municipality. At one stage the train came to Fairfield from Heidelberg and then went round the Outer Circle Line. The construction of this line and bridge was under the direction of the late Sir John Monash, Engineer-in-Chief of the Victorian Railways. The line was closed after a few years, and in 1930 was converted into a roadway. A direct rail route from Heidelberg to Melbourne was established in 1901. Previously the trains ran from Heidelberg to Collingwood (now known as Victoria Park) and back through North Carlton to Melbourne.

A.J.P.

R. T. Benton, Ph. C., M.P.S.

Pharmaceutical Chemist
MILK ANALYST
CHIROPODIST
707 HEIDELBERG ROAD
ALPHINGTON, N.20
Phone: J.W. 1604

BACK TO HEIDELBERG MUNICIPALITY

St. Helena

The high hills are haughty, they stand against the blue,
And count themselves a cut above the likes of me and you;
But the little hills lean down to us and pass the time o' day,
And tell the gossip of the tracks and give their views away.

—R. H. Croll.



LEAVING Greensborough, you at once begin to climb Boyle's Hill. The way is prettily edged with green slopes holding some good timber. The road winds and gives you pleasant views, and eventually you start the ascent of Lannon's Hill, at the top of which is the gate of "St. Helena." A thing to ponder is the surprising change in the nature of the soil, which will be noticed as you look across the hill crest from north-west and west. You have been walking on whitish ground which appears to be alluvial, at a line on the St. Helena Estate it alters abruptly to the rich black soil of a lava flow. This is part of the strip which extends from Coburg to Kangaroo Grounds.

The outlook from here is impressive. Low, wooded hills compose the foreground, the middle distance has for conspicuous landmarks such well-known points as Garden Hill at Kangaroo Grounds, and the pine-covered rise to the north of Ringwood Station, while the background displays those blue ranges, of which St. Leonard, Monda, Juliet and Donna Buang are the most conspicuous peaks. It was probably the beautiful outlook, added to a rich belt of soil and neighbourhood of a river, which decided the early settler to make his home here.

Crossing the small reserve, you find yourself in a graveyard surrounding a church. A tablet tells you it is St. Katherine's, but you soon gather that it was originally designed for the use of a single family, the private chapel of a patriarchal system. Major Anthony Beale, who had been paymaster in the East India Company's forces, arrived from the island of St. Helena in 1839. Port Phillip Settlement was then four years old, and still part of N.S.W. Major Beale records in his diary (still in possession of the family) that he consulted several agents (he refers to them in no complimentary terms), including John Pascoe Fawkner, and eventually decided on this piece of land on the Plenty, then definitely "out in the bush." The original building of imported weatherboards still stands, with its chimneys of narrow hand-made bricks.

Beside the house is the church, dedicated to his wife and named "Rose Chapel," a substantial building with Gothic windows, some in stained glass, in memory of departed relatives. There is also a tablet recording the death of Onesiphorus Beale, who was drowned in the Tamar in 1839, as the family came through Tasmania on their way to Port Phillip.

Since the building has been handed over to the Church of England for public use it has been re-named St. Katherine's, and

BACK TO HEIDELBERG MUNICIPALITY

the graveyard has become a general burying place. Here lies Charles Symons Wingrove, who died in 1905, after 46 years as Secretary of the Shire of Eltham. Of the original settlers it is recorded that Anthony Beale was born in 1790 and died in 1865; and that Katherine Ross, his wife, was born in 1795 and died in 1856.

Here also lies Walter Withers (whose "Tranquil Winter" and other works are in the National Gallery), who once resided at Withers Court, Heidelberg, an artist who loved this picturesque countryside.

St. Helena has no pretensions to "progressiveness," but rests content in its peaceful and picturesque setting.

H. E. H.

Established 27 Years

O'KEEFE BROS.

Leading Quality Butchers

154 BURGUNDY ST. HEIDELBERG

Phone: Heid. 115

DILWORTH & SON PTY. LTD.

FUEL MERCHANTS AND ICE MANUFACTURERS

67 HEIDELBERG ROAD Ivanhoe

Phone: Ivanhoe 375

Ivanhoe Pure Food Store, N.21

H. KNORR PTY. LTD.

135 HEIDELBERG ROAD IVANHOE

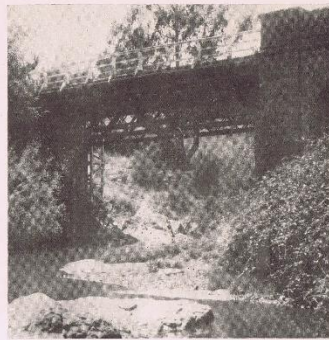
GROCERS, PRODUCE and FUEL MERCHANTS

Potatoes, Wheat, Bran, Pollard and Chaff always in stock.

NOTED FOR OUR FAMOUS FACTORY BUTTER

Phone Ivanhoe 38.

Support the Resident and Old-established Firm



By courtesy of "The Lumber" BRIDGE OVER THE PLenty

H. WILLIAMS & SONS PTY. LTD.

"VICTOREE" PRODUCTS

Jams, Jellies, Preserves, Sauces, etc.

Are Made in the District

672 HEIDELBERG ROAD - - ALPHINGTON

Telephone - - JW 1181 (two lines)

BACK TO HEIDELBERG MUNICIPALITY

Yarra Yarra Golf Club

FOLLOWING the collapse of the Land Boom of the "eighties," there was sufficient enterprise left in some districts to restore the social life of pre-boom days. This was so at Eaglemont, where golf grew from a subject of individual conversation to one of general interest, with the result that in 1898 a Golf Club was formed, and links laid out on the hills of Eaglemont.

The names of these pioneers of the ancient game in Heidelberg are worth recalling—Messrs. W. Montgomery, Wilson Cameron, Claude Carter, S. C. McCallum, H. J. Price, G. F. Matthews, and Dr. Pyffe. Enthusiastic support was received from many directions.

Naturally, land values were at low tide following the Land Boom, and the success of the new golf club was due in a great measure to securing at a peppercorn rental the right to play over the Eaglemont Estate. Further help was received from the late Mr. Wilson Cameron, this gentleman giving the club permissive occupancy of a portion of his land for the erection of a club house. About this time old buildings were very cheap, and the club purchased a two-roomed house for £10. It seemed a long way from that humble start when some twenty years later the club, which had removed to Rosanna, spent £10,000 in the erection of a palatial club house.

The Eaglemont Club had an enjoyable and successful time over the old links until 1910, when they began to be pinched for room. Then Mr. Herbert Darvall and

Mr. C. M. Davies put a proposal before a meeting of members. Realising that the gradual encroachment of building operations meant too many buildings and not enough golf, they suggested the purchase of 100 acres at Rosanna. This proposal was accepted and acted upon, and eventually the club transferred to Rosanna, and assumed the new name of the Yarra Yarra Golf Club, which is known far and wide in the world of golf.

The course at Rosanna was purchased in 1910 for £4,500, and sold again in 1926 for £45,000.

This transaction provides one of the romances of real estate, and holds its own with any transaction of the boom days.

"BACK TO HEIDELBERG"

A fitting occasion for a Hand Tailored Suit by

ARTHUR SHANDS HIGH GRADE TAILOR AND MERCER

88 HIGH ST. - - NORTHCOTE (3 mins. from WESTGARTH Station)

New Season's Goods Now Showing

Phone: J W 4048

BACK TO HEIDELBERG MUNICIPALITY

Early Greensborough

GREENSBOROUGH is one of if not the first settlement outside Melbourne. On the banks of the Plenty, adjacent to the present township, prior to the selection of the site by Batman and the subsequent founding of Melbourne by Fawkner, was transacted possibly the largest, and certainly the most romantic, deal in real estate in history, known as Batman's Treaty, by which was conceded, for about £200 worth of cutlery, clothing, blankets, etc., 600,000 acres of land extending to Geelong, and comprising the present sites of Melbourne and a score of other cities, towns and agricultural settlements. Old identities frequently refer to the fact of the habit of large numbers of natives congregating in this vicinity, and a careful perusal of Batman's Journal (Melbourne Public Library) with regard to distances, time and direction traversed in his search for natives qualified to treat with and sign the treaty all point to the banks of the Plenty, presumably near the site of the old disused flour mill, as the scene of the transaction.

Batman describes the deal as having transpired on the banks of a beautiful river, as the Plenty undoubtedly was prior to its headwaters being diverted to the Yan Yean reservoir. The fact of this abundant water supply, and the rich black soil in the vicinity being known and commented upon by the residents of the then infant city of Melbourne, was responsible for the early influx of settlers.

As early as 1838, three years after the

signing of the famous Treaty, Major Anthony Beale, a recently retired military officer in command of the guard of Napoleon at St. Helena, took up a large section of land in the vicinity and named the place St. Helena. This estate is about two miles from Greensborough township, and forms part of the Greensborough Riding. The approach to the homestead by road is of intense interest to the geologist. In ages past an upheaval of the sea bed has left a large deposit of sand.

In a short time the fertility of the soil, abundant water supply and comparatively short distance from the rapidly growing young metropolis, soon attracted other settlers, whose names, with their descendants, will always be identified with the progress and development of the district.

The old pioneers deserve special recognition, and from data to hand I am enabled to refer to them in chronological order. After Beale, the next settler was Flintoff, who took up land north of the river, known as the Black Hills. Usher, on property now occupied by ex-Cr. Middleton, J.P. The original owner (Usher) erected a stone wall, which was regarded by the boys of that period as a fortress to keep out invaders.

J. Burrows settled on Tower Hill, now occupied by Miss Black. Mlarger and San settled at Willis Vale, now owned and occupied by Mr. Wm. Partington as a dairy and Jersey stud farm. On this property, along the river bank, Maygers planted the first orchard for marketing in the State, many of the trees being still

fruitful. The picturesque brick residence is still in good repair; the internal fittings were imported. This property is of historic interest. Robt. Whatmough also planted an orchard on the river. Mr. Todd and Mr. Booth were also amongst the earliest settlers, renting ground for farming purposes from Mr. Flintoff. Onions were largely grown, realising almost fabulous prices, up to £.60 per ton normally, and the prices realised by Garthwaite, who in the early fifties carted onions and potatoes by bullock team from Beale's and others across country to Bendigo, worked out at almost "their weight in gold." Then there was C. Buck and Mark Ewart, whose original estate was known as the Log Padlock, which extended to the Yan Yean road; and McLaughlin, some of whose descendants still occupy the old farm at Dry Creek.

Then follow other old identities—Mickey Butler, Grimshaw, after whom Grimshaw Street was named; C. Partington, son, at one time lessee of the toll gate; John Stone, Bill Henderson, J. Eagle, J. Mann, Jas. Chapman, who built the old hostelry now known as Marble Hall. Others of a somewhat later date were John Mitchell, John Gordon, John Limmer. In and around St. Helena were some old identities of German nationality—Wisner, Schultz, Gritchener, Schuster, Grindler, Roy Rufus, and others.

In comparatively early days Mr. Green, from whom the whole riding takes its name, purchased from the Government of the day the section of land which constitutes the site of the township area. This was subdivided into 1, 1 and 2 acre blocks and re-sold. Mr. Green generously gave for educational purposes the land now

claimed by the Anglican authorities. Bricks were made from clay in the vicinity and a schoolroom was built. This building, recently demolished, was for many years used as a common school, the first schoolmaster being Mr. J. Johnstone. This was approximately 75 years ago. The present State school building came many years later, but some of the scholars of the first school are still living—many in the district.

The population of this picturesque and progressive riding of the shire is growing rapidly, and with its natural advantages—physical and climatic—must eventually become an important residential area.

D.V.M.

A New, Economical Service

PETROL AP OIL

Support Australian Enterprise
Buy A.P. and support a medium of supply Independent of Foreign Monopolies

A.P. profits remain in Australia 100 per cent.

A.P. Standard of quality has been set by Australian automob. engineers qualified to judge the grade suitable for the Australian market.

A.P. aids economy by supplying the highest grade petrol and oils at reasonable prices.

A.P. quality is assured by published analysis.

PRICES

Petrol Standard 1/8 per gal. Bopul 1/8 per pint.
Selen 1/10 per gal. A.P. 9d. per pint.

IVANHOE SERVICE STATION
142 UPP. HEIDELBERG ROAD
(Opp. Miles. Agent), IVANHOE

The Artists of "Old Heidelberg"



HEIDELBERG, an ancient name, rich in romantic associations, learning and culture, represents to most of us a popular Melbourne suburb which has, in the passing of time and the working out of its civic evolution, gathered to itself something of a history and traditions of its own; for this Heidelberg we know so well has, in the seventy-odd years of its growth, seen many changes and many comings and goings in a population ever noted for its communal felicity and pride of location. This sense of self-establishment is to be accounted for partly by the comparative isolation of the place in the old days, when the only contact with the metropolis was by means of a slow and infrequent coach running from Swanston Street to the original "Old England Hotel"—an excursion which savoured somewhat of a journey into the remote bush.

With installation of railway communication the sense of remoteness was modified considerably, but Heidelberg still remained of a Sussex village. Always an attraction to landscape painters from the days of Buvelot, the actual artistic colonisation of the village did not take place till about forty years ago, when Tom Roberts, Charles Conder and Arthur Streeton pitched their camp in an old house on Eaglemont Hill, which later came to be known as "The Warren," as the nomadic population became denser and more pro-

miscuous. It was here Streeton painted "Slow Glides the Stream," "Golden Summer," and other notable things, in his youthful period, and Conder passed through a phase which may have indirectly influenced the type of work on which his mature reputation is based, but which was at this time not so much creative as reflective of passing influences. Roberts was also a great worker here, and though new colonists kept creeping in the original trio maintained throughout a semi-aloneness, as who should say—"we are in the company of these others but not of them." Two of the three have passed to their fathers, but one still survives, a prominent figure in the Australian Art world.

Eaglemont was in those days the scene of many *al-fresco* revels instituted by Gallery students, but this was a side issue only indirectly connected with the status of Heidelberg and its vicinity as a resort of artists. Two sub-personalities of local interest which come to my mind were a Mr. Whelan, who was in official charge of the estate, including house and live stock, and to whom the picnics and painter invasion generally were a sore trial. The other was one "William," a waiter at the Old England, where thirty or hungry artists resorted occasionally when funds permitted.

Eaglemont was not the only spot to find favour with the fraternity, and the near-by Charterisville Estate was for some years the settled home of Walter Withers and his family, and in a less domesticated fashion that of the then bachelor.

E. Phillips Fox, both distinguished Australian artists working along different depictive lines, for Fox, though he turned out many fine outdoor pictures in his time, was fundamentally a figure painter and a specialist in portraiture. The locality had a special charm for Withers, who, after leaving Charterisville, took a house in Cape Street, Heidelberg, and later moved on to Eltham, where he died in the year of the Great War—1914.

All this deals with what was practically the doings of a bygone generation of artists whose children in many cases, greatly daring, follow their father's profession; and with increasing prosperity and importance as a municipality, Heidelberg has grown more cosmopolitan, and lost many of those characteristics which awoke memories of homeland countrysides and yielded the intimate living conditions of an Antipodean "Thrum," where

everybody knew everybody, and where the appearance of a boy-monk (one of a local order of juvenile bare-footed friars) drawing water from a well, did not strike the imagination as being especially anachronistic. This was in the Old Heidelberg days. The New Heidelberg has too many fine streets and well-built houses to be regarded any longer as a village, save in terms of courtesy; while social conditions have, in the natural sequence of things, become more sophisticated, or at least more conservative, than in the old days. The apple orchards may have given place to trim gardens and well-kept lawns, and the ubiquitous motor cars speed noisily over ground where a bicycle was once a novelty; but the river still glides between its sunlit hills—and, also, there are still artists and interested laymen to be found lurking in the neighbourhood if one cares to look for them. A. C.

CROOK'S

National
STORES

Grocers and Provision Merchants
185 HEIDELBERG ROAD IVANHOE
(4 doors above State Savings Bank)

Phone Ivanhoe 550

Super Quality Groceries and Dairy Produce at Lowest Prices.
Famous for over 30 Years for BEST BUTTER

Watch for our Week-End Specials!

Removal Notice

W. E. LADNER PTY. LTD.
30 Years Resident of Ivanhoe

Desire to intimate to their many Patrons that, after 20 years at No. 282 Smith Street, they have secured premises in the centre of the busiest portion of that thriving shopping area, and are now attending to their many clients at

204 SMITH ST., COLLINGWOOD
(near the Post Office)

W. E. LADNER PTY. LTD.
Jewellers and Opticians

TWO GIFT STORES

204 SMITH STREET, 369 HIGH STREET,
COLLINGWOOD NORTHCOTE

Private Address—21 YOUNG ST., IVANHOE
Phones: J 3567; JW 2840; Ivan. 72.

'Chic-quita'

I. V. DAVY (Prop.)

For Up-to-date
DRESSMAKING
Prices Moderate.
All Work Neatly
Executed.

WEDDING TROUSSEAUS
and EVENING GOWNS
especially

222 HEIDELBERG ROAD, IVANHOE
Phone: Ivanhoe 501

'THE EXCLUSIVE'

MILLINERY SALON

Millinery of
Distinction

We guarantee the correctness of
style, line and colour at our
well-known Salon.

We study your style and person-
ality and give fittings for order
work.

Prices Reasonable

169 HEIDELBERG ROAD, IVANHOE
Tel. Ivanhoe 185

Splvester

REGISTERED PRIMARY AND
KINDERGARTEN SCHOOL
54 RUSSELL STREET
IVANHOE

Taking the most recently revised
curriculum to Merit Standard. Progress and
tone highly appraised by the Government
Inspector. All schoolroom facilities and
furnishings of the most approved type.

Miss Catherine Parsons

T.P.I.C. Principal

Miss Ruth Sharwood, 1st Class

T.P.I.C. (Kindergarten Mistress)

Miss Bess White, Reg'd. Teacher

(Teacher of Piano/forte and
Kindergarten Music)

Tel. Ivan. 376 Fees Moderate

Miss K. H. FURNELL

LADIES'
HAIRDRESSER

THEATRE BUILDINGS,
HEIDELBERG ROAD,
IVANHOE, N.21

FOR APPOINTMENTS,
RING IVANHOE 818

Queens of the Carnival



MISS LILLA F. KELLY
Queen of Fairfield and Alphington



MISS EDNA GRASS
Queen of Greenborough



MRS. MURIEL OLNEY THOMAS
Queen of Ivanhoe



MISS HULL TOPE
Queen of Heidelberg

Recognition

HIS assured financial position in which the Municipality of Heidelberg finds itself to-day is very largely due to the wise foresight and guidance of Mr. H. J. Price. It is some years since Mr. Price came into the service of this important municipality, and as the years passed so did the district develop and its undertakings grow in importance under the direction of this dozen of Municipal Officers. For 40 years he was Shire Secretary, and his service as such terminated on 31st December last.

The inception of financial plans for the development and betterment of the Shire were almost entirely conducted by this administrator, and his association with early Councilors such as Councilors Waddell, Ford, Latham and Lugton, was the means of augmenting his own knowledge to a complete understanding of financial requirements. For many years preceding his retirement, Mr. Price conceived and carried out, almost alone, the most important monetary adjustments that were necessary for the development and well-being of the Shire. His ideas were always placed before the Council formally, and perhaps one or two Councilors made acquaintance with the various problems and their solutions as they arose, but it may be said that his recommendations were practically always adopted without debate, for those Councilors who may have had some little knowledge of finance had no alternative but to acknowledge Mr. Price's ability and wisdom in this sphere of the Council's activities.

Mr. Price has been the guide and friend of all Councilors who sought his advice, and many of the beneficial opinions expressed publicly by Councilors were the result of a previous consultation with the Shire Secretary. Speakers appointed to lead deputations, Councilors selected to reply to deputations, representatives who entered into newspaper controversy, all wisely consulted with and obtained information from him if they wished success to attend their efforts.

The Local Government Act, so often a pitfall for the unwary Councilor, was an open book to Mr. Price, and his pronouncements at the Council meetings were frequently sought. Many of the Sections of that Act which were added for the better and more convenient carrying on of municipal affairs throughout the State were the result of suggestions made by him.

The Municipal Staff, with good cause, has always regarded Mr. Price as its friend as well as superior officer. He has encouraged and urged his officers by study and examination, and as a result many Municipal Clerks throughout the State, as well as in the Shire Office, have attained the highest qualifications. The welfare of the Staff has ever been foremost with him, consistent with the Council's obligations to the ratepayers.

This article would be incomplete without reference to Mrs. Price, who has for so many long years been a real helpmate

to her husband, and without whose encouragement and companionship his success could not have been so readily attained.

The results of his direction and building will be felt and acknowledged for very many years to come.

The Shire has indeed been fortunate in having Mr. Price as its chief administrative officer for so long. His services are still available in an advisory capacity, and ratepayers and friends of long and short acquaintance unite in wishing him and Mrs. Price very many years of happiness in a well-earned retirement.

G.F.P.

Graham & Shaw

Leading Quality
BUTCHERS

171 HEIDELBERG ROAD
IVANHOE

Tel. Ivan. 177

Prompt Delivery. Prices Right.

MORE TRIUMPHS IN VALUE GIVING BY EZYWALKIN



Leather Strap Brown Calf Leather Shoe, with genuine velvet sole and comfortable leather heels. Smart round toe. Price 11/9



Leather Natural Strap Shoe, in soft, patent red and pump style, leather sole. Made on the "EZY" last. Size 8 to 9. Price 11/9

We manufacture and are the sole distributors of "Nature's Doctor" Shoes.



A dressy Tan Willow or Black Box Calf shoe, in a distinct comfortable shape. Natural sole, and absorbable in half shoe. Price 14/9



Young's Box Veneering Lace Boots, with mild leather or "Kowal" rubber sole. On full fitting round toe. Size 8 to 9. Price 14/9

EZYWALKIN PTY. LTD.

THE FIRM THAT UNDERSOLLS

BACK TO HEIDELBERG MUNICIPALITY

J. G. BROWN & CO.
 House, Land and Insurance Agents,
 Accountants
 Oldest Established Estate Agency in
 Heidelberg
 Cc. MOUNT & BURGUNDY STS
 HEIDELBERG
 Phone Heidelberg 281

G. MINTO
 UP-TO-DATE GROCER
 Cor. Silverdale & Alandale Roads.
 EACHAMONT, N.22
 Phone: Heid. 535
 Our Slogan—Satisfaction or your money back
 ONE QUALITY THE BEST

Read the Latest
BOOKS
 AT
 Sheffield's Library
 FOR
 Hygienic Library
 124 BURGUNDY STREET
 HEIDELBERG
 Open to 8 p.m.
 Friday and Saturday to 9 p.m.

The Oldest Butchering in Heidelberg Shire.
DAVEYS - Butchers
 140 BURGUNDY STREET
 Established 1864—1933. 69 Years.
 OUR HIGH GRADE MERITS YOUR TRADE
 Spring Lamb, Prime, 1 1/2 lb. Prime Rib, from 5d. Best Sausage 9 1/2 lbs. 1/-
 Spring Lamb, Legs from 7 1/2 lb. Kincaid Block 5d. Shank 5d.
 Prime Lamb Loin 1 0/10. Best Rib 5d. High Ham, Pork 10/-
 Legs Mutton, 3 1/2 lb. from 4d. 1/2. Smoking Ham 1d. 1/2. Pork 10/-
 Pure Bacon, 2 1/2 lb. 1/2 lb. Best Block 1d. 1/2. Best Ham 10/-
 Preservative Bacon 1 lb. a 1/2. Legs Pork 1d. 1/2. Drippings 5d.
 Prime Sides 1 lb. 1/2. M. Sides 10/-
 There is only one way to look after your guests during the celebra-
 tions Back to Heidelberg—give them Daveys Meat—it's undoubtedly
 the best. We are still at your service after 69 years. Note a few of
 our prices. They will astound you. Buy locally and save money.
 We are able to offer you these Low Prices as we sell direct from the
 grazier to you. We take this opportunity of thanking the people for
 their patronage for so many years. We have numerous clients still of
 over 40 years trading.
 OUR QUALITY IS OUR RECOMMENDATION.
DAVEYS - Butchers
 Phone H'berg 356

BACK TO HEIDELBERG MUNICIPALITY



By courtesy of "The Leader" COMING INTO GREENSBOROUGH

Ivanhoe Authorised News Agency
WM. H. SEWELL
 194 UPPER HEIDELBERG ROAD
 IVANHOE, N.21
 For VANA Exercises, School Requisites, Lunch Wraps, etc. Magazines,
 Fashion Books, Novels, etc.
 Hygienic Circulating Library
 Over 3000 Books to choose from.
 Advertisements received for all Newspapers. Phone: Ivan. 251

BACK TO HEIDELBERG MUNICIPALITY

Heidelberg Road

Hwonder has it ever occurred to anyone travelling along the Heidelberg Road to inquire as to the origin of its name? For ninety years or more it has been so called, and indeed in the very early days a Heidelberg Road Trust was created. But all research in this direction has baffled its inquirers, and to-day there is no explanation.
 Originally, the Heidelberg Road started at about the corner of Brunswick Street and Victoria Parade, and soon became a well-developed track. Dr. Perry, the first Victorian Anglican Bishop, describes it, in 1849, as the "only made road outside of Melbourne." But to refer again to the name "Heidelberg." From whence did it originate? Is there any trace of the cause for so naming it? I think there is, and offer the following explanation:
 Amongst the first settlers in the district were Mr. David Charteris McArthur and Captain John Brown, both connected with the Bank of Australasia. Mr. McArthur as Manager and Captain Brown as Managing Director. By the way, Captain Brown was the father of Sylvester, who, under the name of "Rolf Boldrewood," wrote a number of interesting Australian stories, mostly dealing with the bushranging days. Mr. McArthur and Captain Brown had properties adjoining each other in Ivanhoe, one known as "Charterisville" and the other "Hartland" Estates.
 Captain Brown was, as might be expected, a prominent Melbourne man, and

the father of several handsome sons and daughters, and at his estate entertained largely. He built a commodious house, and a round of gaiety continued throughout the year, consisting of balls and dinner parties, and hunting, fishing and shooting excursions.
 At the foot of Hartland's Estate the Yarra flows, and from a certain point on the Heidelberg side, little is left to the imagination to conjure up a replica, on a small scale, of German Heidelberg. The configuration of the land with the river running below is singularly alike, and it has been suggested that when inviting his Melbourne friends out, he asked them to visit "Heidelberg."
 For want of a better explanation, this seems feasible, and as great numbers of people partook of the hospitality of Captain Brown and Mr. McArthur, the adopted name of "Heidelberg" would be gradually accepted.
 In the old records of the Municipality it is interesting to note that part of what is now known as "Ivanhoe Township" was called "Little Heidelberg."

Coombs' Bird and Pet Shop
 168 HEIDELBERG ROAD
 IVANHOE
 Aviary Birds, Goldfish, Kittens, Pups,
 BOUGHT AND SOLD
 Bird Seed, Cages, Pet Plants, Garden Seed,
 Animal Medicines,
 ALL DOG ACCESSORIES.

BACK TO HEIDELBERG MUNICIPALITY

The Coming Carnival

MARCH is to be the month of Carnival in Heidelberg Shire. Many attractive and interesting functions have been arranged by the Organising Committee—in connection with the Back to Heidelberg movement—comprising a varied programme of entertainment, including—
 MARCH 22nd to 24th—Three Days Bazaar in the Ivanhoe Hall, to be officially opened by the Premier, Sir Stanley Argyle, on Wednesday, the 22nd inst., at 8 p.m., and by the Hon. Kent Hughes, M.L.A., on Thursday, 23rd inst., at 8 p.m.
 SATURDAY, MARCH 25th—Great Sports Carnival at Heidelberg.
 SUNDAY, MARCH 26th—United Church Service at Ivanhoe Picture Theatre, at 3 p.m.
 WEDNESDAY, MARCH 29th—Grand Queen Crowning at Ivanhoe Picture Theatre.
 The Back to Heidelberg Movement is being promoted by the Shire of Heidelberg Relief Organisation, and the objective is to raise funds to help relieve the stress of unemployment. An opportunity presents itself for citizens to help those who cannot help themselves.

And so we
MEAT = = HOUSEWIVES
 No doubt about the QUALITY and VALUE when your MEAT SUPPLY comes from
WORTLEY'S
 Organised for service throughout the district. Make delivery daily. See our window displays.
 Burgundy St., HEIDELBERG, Tel. H541. 30. Heidelberg Road, IVANHOE, Tel. Ivanhoe 51. Heidelberg Road, ALPHINGTON, Tel. J77 1599.

A Land Sale at Ivanhoe

AS the oldest municipal organisation in our midst, Heidelberg entered upon its career long before many wealthy and flourishing suburbs were known to the white man. Its shire boundaries exceed 40 miles square of rolling and fertile lands from Fairfield to Diamond Creek.

Away back in the forties of last century, before gold was discovered or bridges built over the Yarra, Heidelberg was the home of the most wealthy and prosperous citizens of the new community. Each had his carriage and pair, driving to and from the city over soft, unmade roads, which were belts of sticky, thick mud after rain.

These citizens lived in large and comfortable houses set in the midst of farm and pasture holdings. A sale of land at Ivanhoe (before it had that name) took place in 1840, and the advertisement in the "Port Phillip Gazette" of 30th December, 1839, declares the surface of Ivanhoe to be "dressed in the evergreen herbage of a southern clime, shaded by the dark green oak and the silvery-tinged acacia waving their slender forms on the graminal (sic) face of a choice of Glanville's superb lands. The gradually rising nature of this fertile spot is cherished by the sweet ripple of a never-failing crystal water meandering with gentle effort its sinuous course along."—Age, 1/12/28.

IVANHOE
THE BEST RESIDENTIAL DISTRICT IN THE METROPOLITAN AREA, AND SO HANDY TO THE CITY.
For PROPERTY SEE
W. H. SWIFT (F.R.E.I.)
AUCTIONEER & ESTATE AGENT
183 HEIDELBERG ROAD (3 doors above Savings Bank) — IVANHOE
Phone ——— Ivanhoe 275

"The Old England"

HOW the name befits this old hostelry. The approach and environment create an old-world atmosphere which stirs imagination. The flight of time has not erased from memory the glamour of its early days, and it stands to-day sedately confident that "time cannot wither" its interesting history from 1848 to 1933. To the young generation "The Old England" is only a name, but for numbers of the elder generations—though time has mellowed many memories—it has associations which are ever-green.

The property has been in the hands of the Lewis family since 1856. Mr. W. L. Lewis, father of the present licensee, was a child of six when he was brought to the hotel. On reaching maturity he, with his brother, operated for over 40 years a service of coaches from Melbourne to Heidelberg, Queenstown, Yarra Glen, Whittlesea, Epping, Warrandyte, and district. These services were run in the days when roads were roads in name only. He was in business during the busy mining period, and can relate many stirring stories of those times.

Much of the early history of the district is linked up with the Old England. It was here for many years the old Road Board—the forerunner to the present Municipal Council—held its meetings. The hotel was also the favourite resort of many famous artists—the old portion of the building has on many occasions been the subject of an artist's skill. The

various hunt clubs met at the hotel, and the run over the surrounding hills could be easily followed from the front verandah. The old stable, which was used in connection with the coaching business, still stands, and the spacious yard, with its pump and well, reminds one of the days when the horse was a more important animal than he is now. The original roof of the old building was of shingles, but later was covered with iron. Although over 85 years old, the original building stands as good as ever. It was built in the days when constructions were as strong as the spirit of the pioneers.

A Wide Range of Choice
One of the attractions of shopping at a big store is the wide range of choice available—and at our establishment the value is unquestionable!

J.H. CHANDLER

PTY. LTD.
HEIDELBERG RD., IVANHOE
(Opp. Post Office)
HARDWARE, TIMBER AND CROCKERY STORES

Complete and extensive stocks of Household Requirements in Hardware and Crockery, and Gardening Tools.
Daily Deliveries in Heidelberg and Ivanhoe
Tel. ——— Ivan. 43

Ivanhoe House

OVER 90 years ago the late Mr. Thomas Greenaway was born at Ivanhoe House, one of the earliest homes established in the district, and long before any general settlement took place. In those days Heidelberg was a name to conjure with, but Ivanhoe was simply not on the map. Among the interesting records left by Mr. Greenaway are stories of treating with the blacks at the water-hole where now the Ivanhoe bowlers follow their favourite sport. To this water-hole Mr. Greenaway repaired for protection on "Black Thursday."

Mention of Ivanhoe House, which has now evolved into the Ivanhoe Grammar

School, will cause many a mental picture to spring to the memory of old residents of the community. When the original Greenaways arrived from the Old Country they lived for a time under canvas—as was the general rule—in what is now Linton Street, near the old "elbow" tree. Satisfied that the district offered prospects, they later began the first portion of Ivanhoe House. Mr. Thomas Greenaway was known far and wide as the Heidelberg coach proprietor.

There are several families still resident in the shire whose experiences and family records in the lively days of 70, 80, 90 years ago would provide entertaining and informative reading.

<p style="text-align: center;">EMERY'S IVANHOE DRAPERY HOUSE <i>For General Drapery</i> 189 Heidelberg Road IVANHOE</p>	<p style="text-align: center;">Ivanhoe Grammar School A CHURCH PUBLIC SCHOOL FOR BOYS DAY SCHOLARS AND BOARDERS. With a wide curriculum including Accountancy subjects. There is an excellent Preparatory Department for smaller boys. It is to the boys' distinct advantage that they should enter a Secondary School not later than in their twelfth year. <i>Prospectus from the Head Master, Rev. SYDNEY BUCKLEY, M.A.</i> Telephone: Ivanhoe 681</p>
--	--



Reproduced from "Modern Homes in Australasia"

By courtesy of the Author.

A Garden of Roses in Ivanhoe

STRATHALLAN DAIRY

for Quality and Service

Milk and Cream delivered in Heidelberg, Ivanhoe, etc.

23 LIVINGSTONE STREET, IVANHOE

Ring Ivanhoe 55

An "All Round" Service

HEIDELBERG both old and new has suffered in the matter of transport facilities, and many are the stories told of irritation and worry due to the inadequate railway services of the past—when trains were few and far between. To reach the city from Heidelberg about 30 years ago meant a journey of some consequence. On reaching Clifton Hill the train ran down to Collingwood (now Victoria Park), the engine shunted to the opposite end of the train, puffed up to Clifton Hill again, and then set out for North Fitzroy, Carlton, Royal Park, Macaulay and Flemington Bridge, finally reaching Spencer Street exhausted! An Old Heidelberger relates an incident in this connection which cynics may suggest is worthy of a faberian, but its veracity is undoubted. A night in the city, a round of entertainment, and then a sudden realisation that the last train had just left Spencer Street for Heidelberg. Nothing daunted, the aforesaid 'berger set out to catch the train. The G.P.O. was soon left behind, and by sharp steps combined with short sprints (he was a professional runner, by the way) he eventually reached Collingwood Railway Station in time to catch the train, having made up the handicap with minutes to spare!

BURTON RENDLE

Picture Theatre Building
IVANHOE

TAILOR & MERCER

For Men's Wear of Good Quality, in the Latest Modes, at Reasonable Prices.
Phone Ivanhoe 254

L. CROUCH
Fruiterer & Greengrocer

Ten years in Ivanhoe.
We sell the best and
cheapest Fruit and
Vegetables.

Our weight is
JUST
Our quality is
PERFECT
Our delivery is
REGULAR

Phone: IVAN. 140

195 HEIDELBERG ROAD
IVANHOE, N.21

K. RAMSAY
M.P.S.

Dispensing Chemist

RING

Ivanhoe 112

for delivery of
your require-
ments.

162 Heidelberg Rd.
IVANHOE

"Their Names Live On"

This list of early settlers and prominent persons in the history of Heidelberg Shire is not by any means complete. There are scores who worthily played their part in the development of this district, and the names here enumerated are merely those of whom the compiler was able to obtain some record. In many cases these pioneers are represented in the shire unto the fourth generation.

DR. ROBERT MARTIN, J.P., Chairman Heidelberg Road Trust, 1855; first Chairman Heidelberg District Road Board, 1860-61; 1861-62; 1862-63; 1863-64. Dr. Martin was the original owner of a well-known homestead on the Yarra—the original "Viewbank"—which was standing until a few years ago. Dr. Martin entertained freely, and is well remembered by a few old residents for his famous Christmas parties.

He was always prominent in public movements, being well endowed with the community spirit. He was the grandfather of Mr. J. P. Adams, deputy-chairman of the Heidelberg Relief Organisation.

CR. THOMAS DAVEY, J.P., was a native of Adelaide, and came to Heidelberg in 1872, purchasing a business which had been established in 1846, and is carried on to this day as E. Davey & Co. Mr. Davey was a great worker in all movements for the betterment of the district, his interest being widely distributed. He was for 30 years a member of the Shire Council, being President in 1882-3, and again in 1895-6.

HALIBURTON BEALE, a native of St. Helena, landed in Tasmania in 1839, and came to Victoria the same year. He was a son of A. D. Beale, who settled on the Plenty. Mr. Haliburton Beale later became an hotelkeeper in Heidelberg, the licence for which was dated 1838.

JOSEPH BOND, J.P., arrived in Melbourne in 1853, and soon after settled in Heidelberg. For many years he had extensive agricultural interests in the district, being engaged principally in dairying. He is well represented by surviving generations.

HON. JAMES GRAHAM, original member and Treasurer of the Heidelberg District Road Board. Mr. Graham later became a member of the Legislative Council, and a member of Cabinet.

D. C. McARTHUR, J.P., Chairman of Heidelberg Road Trust, 1847-48; 1852-53; 1858-59; 1859-60. Mr. McArthur did much pioneering work in the district, and was first manager of the Bank of Australasia, opening the Melbourne office, which was situated in Little Collins Street, in 1837 or 1838. This institution flourished under his management.

JOHN SHARP ADAMS, J.P., was President of the Shire in 1884-5. Mr. Adams was the founder of the well-known Adams Quarries, situated at Alphington.

Significant Continuous public support and confidence throughout almost a quarter of a century in the dairying business in Heidelberg districts—we simply suggest its significance. The same service, backed by the latest hygienic methods for ensuring an essentially PURE AND RELIABLE MILK SUPPLY, IS YOURS FOR THE ASKING.
Daily Deliveries in Heidelberg & Ivanhoe Districts

GILLIES DAIRY

Tel. Heidelberg 197.—Opposite Baginbun Station

C. P. W. SMITH came to Australia in 1849. He followed the occupation of a miner for some time before settling in Sydney. He next walked overland—600 miles—to Mt. Alexander goldfield in Victoria. Later he settled in Alphington, took over Lucerne Farm, and became prominent in public life. Entering the Council, he eventually held the Shire Presidency in the years 1874-75; 1877-78; and 1888-89.

THOMAS WILLS owned "Lucerne," close by Alphington, the village on the Darebin Creek since called into being and so named. He had a fancy for the great fodder plant, and was the first proprietor in the neighbourhood to lay down any considerable breadth of land with it.—Boldrewood's "Memories."

ROBERT LAIDLAW, J.P., came to Melbourne in 1839. After many years' experience of farming in other parts, Mr. Laidlaw settled at "Spring Bank" in 1853, and the next year purchased 92 acres. He was a noted exhibitor and winner at agricultural shows. In 1857 his prize-winning wheat was sold in Melbourne for £2 per bushel and subsequently sent to London. He was a very active member of the Victorian Agricultural Society, which held its annual show at Heidelberg.

"In my humble opinion the Heidelberg Shire Council should accord some definite recognition to the fact that theirs is the oldest municipal organisation in the State."—Secretary of Historical Society of Victoria, 1916.

for Meat of Quality
HARRIS & BLACK Pty. Ltd.

165 Heidelberg Rd., Ivanhoe
Telephone Ivanhoe 660

Service and Satisfaction Assured

SAMUEL COLE built the Sir Henry Barkly Hotel over 70 years ago. He was a reputed sportsman, and trained a number of horses famed in the early racing days. He was also a boxing enthusiast. Many of the old prize fighters, including Sellars, the famous aboriginal boxer, were trained by him.

JOHN DONALDSON, a native of Fife-shire, Scotland, came to Victoria with his parents in 1841. After a few months in Melbourne his father, the late James Donaldson, purchased from the N.S.W. Government a section of 640 acres of land at Kangaroo Ground, the first land sold on the north side of Diamond Creek. The family had only been on their land for a few weeks when they were attacked by two bushrangers, who soon after repeated their visit in the company of two others, and helped themselves to what suited them, among the rest a fast riding horse. The marauders in this case—the first raid of white bushrangers in Victoria—were Williams, Fogarty, Gipps and another. Mr. James Donaldson died in 1856. About 1857 Mr. John Donaldson visited Scotland, and on his return purchased 57 acres at Ivanhoe. The fine stone residence erected, known as Bellevue, stands to-day, and is still occupied by a Donaldson.

CHARLES PARTINGTON went to Greensborough in 1857. He was employed as a gardener for ten years, then purchased a section of 160 acres, and became a successful farmer.

ROBERT HOBSON was a miller at Heidelberg in the early fifties. Later he carried on farming at Heidelberg and Greensborough. His son, Mr. E. Hobson, and Mrs. E. Hobson are residents of Rosanna.

JOHN BROWN came to Melbourne in 1841, and two years later came to Heidelberg district, where he rented 260 acres of land. In 1855 he moved to Lower Plenty, where he purchased Preston Hall, an estate of 360 acres. He carried on dairying and general agriculture for some years. Mr. Brown was a member of the local Road Board.

Ivanhoe
Girls' Grammar
School

1 a.m. Station

Modern Classrooms, Sports Grounds for Tennis, Basketball and Baseball

The broad curriculum embraces a full range of subjects from Kindergarten to School Leaving Honours. Music pupils are prepared for the public examinations conducted by the University Conservatorium.

The regular teaching staff includes 5 graduates of the Melbourne University. A special staff of visiting teachers is responsible for Piano-forte, Violin, Speech Training, Arts and Crafts, Physical Culture and Sports.

Tel.: IV. 319 or W. 3555
D. M. WALKER, B.A., Dip. Ed.,
Head Mistress.

U. S. LUCAS, M.P.S.
Resident Chemist

At your service for Prescriptions,
Developing and Printing Patent
Medicines, etc.

70 MOUNT ST., HEIDELBERG
(Opp. Station)
Phone Heidelberg 311