



Ship to Shore



MISSION TO SEAFARERS VICTORIA Inc. CARING FOR SEAFARERS IN VICTORIAN PORTS SINCE 1857

ISSUE 2 : 2021



Seafarers' Welfare

Keeping seafarers positive in our strange era of the pandemic



m sc Art Prize 2021

See the results of winners online and at the Mission



Heritage

Wonderful antiquities from a by-gone era now in our collection



Voyager Exhibition

New exhibition in the Dome by Simon Burton



CEO's Update

Helping seafarers in lockdown

1919 seafarers' strike due to pay and conditions

Over 100 years ago, the first great pandemic of the twentieth century struck Australia. In 1919, the Spanish flu, as it was called, broke through Australia's maritime quarantine restrictions that had been imposed in October 1918; as the flu had swept across the rest of the world. Globally between 50-100 million died, as it spread in the last year of WW1, from the US and Europe, and then to Africa, India and Asia by the middle of the year.

Then in 1919 the biggest wave of strikes hit in Australia's history. The biggest strike was the Seamen's Union strike between May and August. While pay and conditions were central to the strike, it was also a strike directly concerned with the risk that influenza posed to seafarers.

Seafarers were angry that the Award struck by the federal arbitration court ignored any comparison with the better conditions of other international merchant navies. The seafarers wanted to be paid for overtime and for Sundays at sea. They demanded improvements to the appalling food and accommodation conditions they endured on the ships. They seafarers also demanded sick pay, payment for any time a ship was quarantined due to the flu and life insurance to provide for their families if they were killed by the flu.

Coastal shipping was the mainstay of transport in those days, and the effects of the strike were soon felt across the country. Many towns, particularly those furthest from the state capitals, ran short of supplies.

After many months of great struggle, eventually owners agreed to improved conditions and to provide bedding (without sheets) and to improve food. Of all the original demands, those for life insurance and reduced hours were not won.

In 1919, just like today, the issues of health and working conditions are interlocked. The seafarers fought for their rights against establishments that were more concerned with maintaining their profits than with workers' lives. So what has changed today? How are we caring for seafarers? They could easily strike, and what would the state of shipping be in today? Governments need to recognise the key workers that seafarers are and provide them with security of their livelihoods by vaccinating them in the ports of Australia. Port workers are provided with vaccinations – surely the rest of this vital workforce should be granted the same privileges.

A small example of our styles of service – In Melbourne we have started giving away 3 prize packs on top of the care packages per ship. This is in response to Seafarers surveys regarding their mental health. They have mentioned they needed more group entertainment activities on board. The Prize packs are supplied to encourage the ships officers and crews to conduct recreational activities/competitions and to give the prize packs to the winners. We hope that these activities will foster stronger bonds of the crew on board. A seafarer once said, 'the good bonding of the crew or none thereof can immensely push faster or drag slowly the time/work/life on board a ship'.

In the Melbourne Mission building this is our second pandemic (the first left us a couple of ghosts).

We are still here serving the seafarers and we are supported by wonderful shipping industry partners who support our Mission. Most recently MSC have joined us by supporting the annual Maritime Art Prize by becoming our Major Partner. You too can be a part of caring for crews by getting in touch about sponsoring our annual fundraiser that is held in Melbourne this October 15.

We opened the Mission to Seafarers building on Flinders St in 1917, so this is our second pandemic (the first left us a couple of ghosts). We are one of the oldest charities in Melbourne and are as relevant today, and our welfare work just as crucial, as we were more than 100 years ago.

We continue to enjoy the support of the shipping industry and recently received the generous commitment of MSC (Mediterranean Shipping Company) as Major Partner of the Maritime Art Prize & Exhibition. There are many opportunities to partner with the Mission to Seafarers-Victoria, and I welcome your enquiries.

Sue.dight@missiontoseafarers.com.au

MSC Maritime Art Prize & Exhibition



We are delighted to welcome Mediterranean Shipping Company (MSC) as our major partner for the Maritime Art Prize & Exhibition.

The Mediterranean Shipping Company is a world leading shipping and logistics company that operates in 155 countries. MSC facilitates international trade between the world's major economies, and among emerging markets across all continents.

The company delivers goods and services to local communities, customers, and international business

partners and takes great pride in delivering global service with local knowledge. MSC calls at a whopping 500 ports on 215 trade routes and carries some 21.5 million TEU (twenty-foot equivalent units) annually, via a modern fleet, equipped with the latest green technologies.

In the spirit of MSC's commitment to continue building long-term trusted partnerships with customers of all sizes and scales, we look forward to their continued support of the MSC Maritime Art Prize & Exhibition.



2020 Winner Rodney Forbes 'A submariner dreams of home'

MARITIME ART PRIZE & EXHIBITION

15th-31st October 2021

\$20,000 in Prize Money

Maritime, Traditional, Emerging Artist and People's Choice Categories

missiontoseafarers.com.au/art-prize



Mission to Seafarers-Victoria
717 Flinders St Docklands VIC 3008
info@missiontoseafarers.com.au



Rotary donations for the Prize Packs.

Reflections

Rev. Heiden Kunoo

The Mission to Seafarers Victoria (MtSV) is the voluntary society of the Anglican Communion for ministering to seafarers. They work to meet the practical and spiritual needs of seafarers regardless of their ethnicity and/or religion. We share our faith by offering friendship, hospitality, pastoral care, and advocate welfare and legal services, as well as providing emergency help.

Sometimes I wonder how much people know about what we do, as I feel as though we are treated like a business. I think people may not realise that we are a voluntary organisation when it comes to serving seafarers.

Although some crews may treat us as a business however, they are truly appreciative of our work and that is why we are still here - to support them and to be here for them when required.

The work that MtSV does might not mean so much for someone who do not know our community/organisation, however, we are not here to impress anyone. Rather, we are here simply to serve the seafarers who have served through their commitment and hard-work to bring goods to our country.

MtSV is an organisation that run things behind the scenes, just like preparing a show. It may not be immediately apparent how much effort, energy and time goes into the work we do that goes on behind the scene. Most of the people will see the show on the stage and see how great the show is or not. However, whether it is a good show or not, they both require commitment, effort, energy, time and willingness. And this is who we are. Most of our work is done behind the scenes, to make sure that the crews are getting what they need and want, especially during COVID when they are not allowed to leave the shore.



Our happiness (or joy) is based on crews' happiness. We might not make a difference to the whole world but when we see the excitement and the happiness of the crews when they receive much needed items and receive care, our joy is complete. Services and goods they receive include sim cards to call family and loved one, providing seafarers with reassurance when they are injured and need to be transferred to hospital. Sometimes they are desperate and not knowing what to do in a foreign country MtSV can guide them through the process and provide them with essential needs. Such happiness we cannot and are not willing to exchange for anything. As I call to mind when in the service of others; a drop of water might not mean anything to the ocean but a drop of water means a lot to the desert. This is what MtSV is all about, we are here to serve and provide cold water to those who still need us.

“Let your light shine before others, so that they may see your good works and give glory to your Father in heaven.”

Matthew 5:16.



One of our care package fishing kits in action. Stuck on board at sea during lockdown, it's a wonderful way of escaping for a while.

If you would like to help make up a fishing kit, the details are on our website.

'MV Bougainville' is one of four gas ships that travel back and forth to Hastings, delivering gas to Pacific Islands such as Fiji, Tonga and Samoa, and also to New Zealand.

Seafarers report

Rev. Onofre 'Inni' Punay



July was an exceptionally a busy month for our shopping service with 49 ship deliveries (thankfully it slowed down for the last week giving us time to breathe).

There are some good and bad developments because of this service. One is that our relationship with the seafarers is tending to become transactional in nature only. Some seafarers are also going overboard with their requested items (things they will not or will not be able to buy if they were actually on shore leave but taking advantage that they can send us to buy the items for them).

Sometimes the seafarers also misunderstand that the service is our income generating activity. We only charge reimbursements and have a few items in our catalogue that we make a small margin on. On the good side, we keep receiving lovely 'thank you' messages though from ships who understood and appreciated we are doing them favour and good service.

It is also refreshing to see seafarers' faces who are waiting for the arrival of their requested essential

items at the top of the gangway. I am also positive that the process of 'window shopping' of these seafarers stuck on board ships are affecting in good ways regarding their mental health.

I am also excited that the established relationships with the ships, the Masters and other seafarers of these ships (who are in contact with us - via emails and on social medias) brought by this service can be harnessed for 'good' ships visiting post Covid restrictions. I also believe this service (in part or in full) will continue post Covid 19 as seafarers have very limited time ashore and sometimes none (pre covid, around 10-20% seafarers can go ashore in our port).

We continue to care for the crews in what ever way our services are required and adapt to suit.



Looking back at the Mission via a set of postcards

Only recently we were alerted to an online auction of the original glass plates of the Rose Stenograph Company: One of Australia's most significant historical photo collections. In the collection there was over one-hundred thousand pieces, more than 7000 are glass negatives, a technology that still beats the modern digital world today.

The collection is without question, a most significant historical collection and the Mission was included in the collection as one of the architectural gems. Held by the family of one of the country's earliest photographic companies The Rose Stereophonic Company, it spanned five generations and 140 years. The collection dates back to 1880 and featured photographs of Ned Kelly's armour, baby photos of Queen Elizabeth II and the landing at Gallipoli.

After the rise of cinema and a decline in stereograph popularity, it went onto become a photographic postcard business, capturing significant landmarks and historical moments nationally and internationally.

The images of the Mission are dated some time between 1919 and 1926. We know this as the Dome was completed in 1919 and the side of the building next to the Chapel on the left, had tennis courts installed in 1926. They show the Chapel as it was before some of the beautiful stained glass windows were dedicated to the men and women who either served or were served by the Ladies Harbour Guild.

Also of great interest is the Main Hall. Some of the furniture is still in the Mission, such as the piano for entertaining, we hold some of the paintings in our collection, and 4 of the original thonet chairs (in very poor repair). Most went out in a clear out in the 1970's.

The Seafarers 'sailors' in the pictures are doing exactly what they do when they come to visit us (when they are allowed ashore) – reading, contacting loved ones at home, relaxing. Missing is the bar – that was only introduced as a 'shop for comforts' back in the 1930's.

Of the 7,000 glass negatives there were 5 of the Mission and we managed to win 4 of them at the auction. (if you have the 5th we would be pleased to have this also). We will be making some new postcards from the negatives, and some of the other images from our archive.

The Mission to Seafarers collection spans from the late 1800s to the present day. It comprises documents, books, photographs and objects, and is recognised of State and National significance.



Capt. Nigel Porteous OAM Archive

On 18 May 2021, the Mission celebrated the opening of the Capt. Nigel Porteous OAM Archive.

The new archive space is the result of a project to store, manage and display the Mission's Heritage Collection, undertaken with generous grant support from the Vera Moore Foundation. This included the restoration and repurposing of the former Baggage Room to house and protect the collection.

David Richard OBE from the Vera Moore Foundation cut the official red ribbon on the new archive room, at a small ceremony before the MtSV Annual General Meeting on 18 May.

This event also marked the retirement of Capt. Nigel Porteous OAM from the MtSV Board, after 20+ years of dedicated service. Naming the archive in his honour was a small token of our vast appreciation for Nigel's passionate commitment to seafarer welfare, and his exceptional efforts and achievements on behalf of MtSV.

It is worth remembering that when Nigel became involved in 2000, MtSV – Australia's oldest and the world's second-oldest Mission to Seafarers – was at risk of having to close its doors, and its seafarer welfare services, due to financial and other difficulties.

Nigel worked tirelessly to help turn the situation around, drawing on his excellent connections and credibility especially within the shipping industry. He played a key role in the establishment of new fund-raising strategies, including the annual Maritime Art Prize and Exhibition (now an institution in its own right).

Later, in 2009, Nigel was one of the drivers of a study resulting in the idea that MtSV partner more closely with other welfare service providers to provide an enhanced, joint service to seafarers, and thus to plans for the creation of a Melbourne Seafarers' Centre. Later, in 2009, Nigel was one of the drivers of a study resulting in the idea that MtSV partner with other welfare service providers to offer an enhanced, joint service to seafarers. Thus, plans for the creation of a Melbourne Seafarers' Centre began.

MtSV Chairman Neil Edwards AM paid testament to what he described as the "open hearted, generous spirit and genuine goodness" of his long-standing colleague and dear friend Nigel, also characterizing him as "indefatigable".

"For years he has just kept popping up at the Mission, more than any other volunteer and, as everyone knows, he is the real deal with the shipping industry. His ability to engage others comes from his deep personal



understanding of the issues faced by seafarers, and his unwavering focus on meeting their needs."

For Nigel himself, the ceremony and the name of the new archive was completely unexpected. He said later that he had been prepared for the AGM and lunch, and then to go home, adding that "I was bewildered, and frankly shocked to find out about the other proposed activities, and to see my name permanently connected to the Mission's archives!

He added, "I am of course greatly honoured, and very grateful for this most generous gesture."

Nigel, we at MtSV cannot begin to express our gratitude to you, nor our admiration and affection. We will miss your wisdom at our meetings but continue to seek your council and look forward to seeing you at many more Mission-related events.

Meet the Members of the Board



Chair
Neil Edwards AM

Neil is appointed by the Archbishop of Melbourne to the role of **Chair of the MtSV Board**.

Neil's distinguished career has spanned most senior levels at the heart of the Australian, Victorian and Canadian governments, as well as leadership of private and government business enterprises, with an emphasis in past decade on the business and regulation of tertiary education. He is a Fellow of the Institute of Public Administration Australia and a Fellow of the Australian Institute of Company Directors and was awarded an AM (Member of the Order of Australia) in the 2018 Queen's birthday honours.

Neil has addressed in depth challenges across a vast range of industries and government including tertiary education, infrastructure, industry development, international trade and investment, budget strategy, science, regional development, multiculturalism, health and welfare, and administrative law. The themes of Neil's career are advising on big-picture public policy and innovating for practical implementation, connecting government with business, managing organisational change and driving projects.

Neil is married and has 3 adult children and 4 grandchildren



Vice Chair
Rev. Canon John Sanderson

John as Clerk-in-Holy-Orders is the Archbishop's nominee to the Board.

As well as being Vice-Chair of the Board John is the Vicar of St George East Ivanhoe and St Pauls East Kew. John also serves in a part-time capacity as the Chaplain to Ivanhoe Grammar School and as the Deputy Command Chaplain Training with Head Quarters Forces Command in Sydney.

Prior to ordination John held a number of leadership positions in the public and private sector and will shortly launch HeartEdge Melbourne an ecumenical movement for the revitalising and renewal of the church in partnership with HeartEdge UK (St Martin-in-the-Fields, London).



Treasurer
Liz Grainger

Liz has been a member of the Board since 2020 and is Chair of the Finance and Business Sub-Committee.

She is a chartered accountant with a career background in the accounting profession, independent consulting, and the Federal and Victorian public sectors. Liz also has considerable experience of boards and audit committees in the public and not-for-profit sectors.



Board Member
Philip Cornish

Philip is married with 3 adult daughters and has 3 decades of experience in leadership positions across health, community and family services.

Philip has worked in both large and small organisations in both the public sector and in NFP's



**Flying Angel Club
Committee Chair**
Ian Fletcher B Bus FAIP

Ian has served on the FAC Committee for some time and recently took on the role of Chair. His business background has been in the packaging world in technical sales with major and minor packaging companies. He is married with 2 children and 2 grandchildren.

Ian was brought up and educated in the UK where he developed an interest in ships and the sea through reading and a stint in the navel cadets whilst at school. In 2013 he attended a screening of the film "Captain Phillips" organised by the MtSV which triggered an interest in volunteering for the Mission. Driving seafarers to and from their ships gave an opportunity to hear their stories and help them find their way around the city in the short time they had ashore.



Board Member
Dr Bronwyn Williams

Bron joined the MtSV Board in late 2019 and is the Chair of the Governance and Risk committee. She brings a strong background in public administration, management and communication, based on former careers with the Australian government (in industry development and business program design, and before that in disability services), and as a teacher and researcher at Monash University and the University of Sydney. She has a PhD in Roman Literature and is a Graduate of the Australian Institute of Company Directors.

Bron lives with her husband Rob in a Yarra's Edge apartment with a view of the Mission. She is a member of the Anglican church (former church warden at Saint John's East Malvern), and volunteers occasionally with the East Malvern RSL.



Board Member
John Lines AM

John was previously Managing Director and Chairman of ANL Container Line Pty Ltd and is presently the Principal of Australian Shipping Group Pty Ltd. In addition to John's long association with the MtSV he is involved with veteran affairs within the Toorak Sub-Branch RSL and is an active member of the Toorak Men's Probus club.

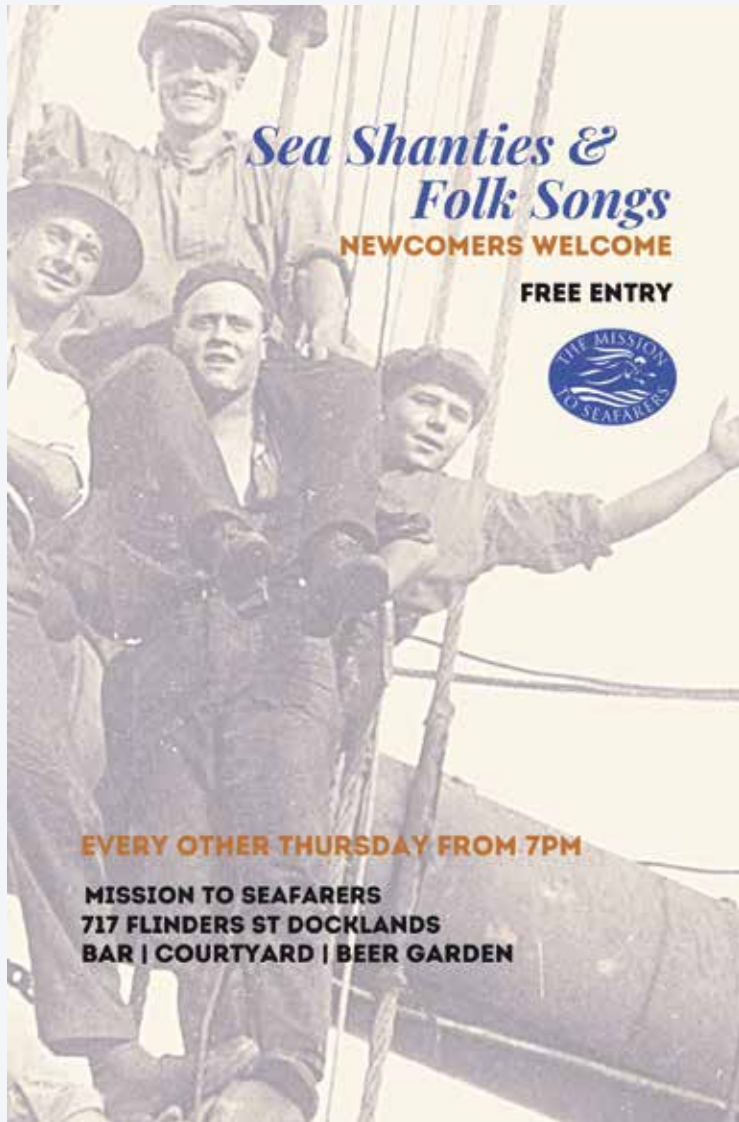
John is married and has one adult child and two grandchildren.



Board Member
Rachel Johnson

Rachel has wide ranging executive leadership experience within the Australian freight and logistics businesses and the development and operation of transport infrastructure in both the public and private sectors.

This has included CEO, Deputy Secretary, Executive Director and General Manager roles involving management of major operational and capital investment programmes across road, rail and maritime projects up to \$70B over 10 years.



Sea Shanties & Folk Songs

NEWCOMERS WELCOME

FREE ENTRY



EVERY OTHER THURSDAY FROM 7PM

MISSION TO SEAFARERS
717 FLINDERS ST DOCKLANDS
BAR | COURTYARD | BEER GARDEN



Maritime Super
OUR FUTURE



Your industry super fund

Maritime Super is one of Australia's longest running super funds having provided financial security to generations of members.

We're also part of the Industry SuperFunds collective that carry the symbol you can trust — run only to benefit members.

We're all about helping members make the most of their super, that's why we are the fund of choice for maritime workers.

To learn more about Maritime Super or how to join — call us on **1800 757 607**

MtSV Heritage Tours

The architecturally significant Mission to Seafarers building is iconic to the City of Melbourne and is considered a fine urban example of a merging of the 'Arts and Crafts' and 'Spanish Mission Revival' architectural styles in Melbourne.

An hour-long tour of the heritage-listed building is led by our experienced and knowledgeable volunteers. Step inside and hear the remarkable stories of the Mission to Seafarers, discover the original use of the Norla Dome and visit the Chapel. Study the maritime artefacts in the Heritage Centre and explore the latest exhibition 'Encountering People, Places and Things: A Historical and Contemporary Photographic Narrative'.

Heritage Tour - \$10 per person

Heritage Tour with morning/afternoon tea - \$17.50 per person

Tea/coffee and cake

Heritage Tour with light lunch - \$25.50 per person

Soup with bread roll OR selection of sandwiches/wraps, tea/coffee and cake

Heritage Tour with Dinner - \$35.50 per person

Roast charcoal chicken with salad and bread roll, dessert

BOOKINGS: info@missiontoseafarers.com.au

All proceeds to Mission to Seafarers-Victoria



VOYAGER

New Exhibition at the Mission

Voyager – a new exhibition by Simon Burton

Simon Burton joined the Mission to Seafarers-Victoria (MtSV) as a volunteer in 2016 to offer his social welfare skills. He started as a bus driver transporting the seafarers on shore leave to the Flying Angel Club at the Mission, and then became a ship visitor providing counselling and practical support to the crews that were unable to leave their vessels.

His approach was simple. He would wait in the ship's galley until a seafarer came in for a break and would start a conversation, soon realising how lonely many of them felt and how willing they were to make a connection with a stranger.

Every seafarer has a compelling story and Simon soon realised the creative potential of his extraordinary access to these men and woman. The project 'Voyager' was devised with the aim to create a series of editorials that vividly capture each seafarer's individuality, and to provide them with an opportunity to speak for themselves. These editorials have since been used by MtSV across a range of media platforms to help raise awareness about the relatively unknown individuals who play such a vital, but hidden, role for our community.



As soon as lockdown is over and the Mission has reopened to the public, everyone is welcome to drop in to see this free exhibition or you can view it online at missiontoseafarers.com.au/whats-on/

Mission and Seafarer Needs Can you assist?

For our care packs

The following contributions are always welcome

To include in our care packs:

- Playing cards (you probably have a few decks that you're not using)
- Beanies, beanies, and more beanies
- Books and bibles – especially novels that would suit young men (Barbara Cartland is not to their taste)
- Tim Tams
- Christmas cards with a personal message written inside
- Jigsaw boxes (with all the pieces)

For the Mission

The services of a professional upholster to repair the Board Room chairs

A handy individual (or a group of mates) to repair and paint the fences, and to replace the edging on the garden beds (we will supply the timber and paint)



We wish to thank our wonderful supporters for their resolute ongoing assistance in helping us help Seafarers

From the Jottings

The tragedy of a sea captains life

By Geraldine Brault

The LHLG newsletter jottings of 1918 features this image and notes that the two children accompanied the shipmaster, their father Captain Aviss, of the barque Inverneill who with his wife Catherine Florence Aviss, travelled through dangerous European waters, to bring the family of three children to visit Melbourne. The two children featured are Margaret and Ronald, who were born at sea in 1915 and their young sister, Ruth Neil, was also born at sea on the 27 August 1918.



The family re-united with a first meeting for the children and grandparents, Captain and Mrs Frampton, who were in Melbourne and "had lost two ships to enemy submarines and were now their third."

The family participated in "a happy communion service in our chapel, in which the parents and grandparents joined this formed the keystone of the visit to Melbourne". Unfortunately, the young Mrs Aviss contracted the Spanish influenza on the arrival in St John, New Brunswick, Canada, she succumbed in November 1918 after spending a week in the Parks Hospital.

Herbert Aviss was left with two toddlers and a three-month-old baby. He went back to England with his children in March 1919 on passenger ship, accompanied by a nurse. The childrens grandparents, Capt. Martin Frampton and his wife were in New York at the time, and they probably learnt about Catherine's tragic death in the local newspaper.

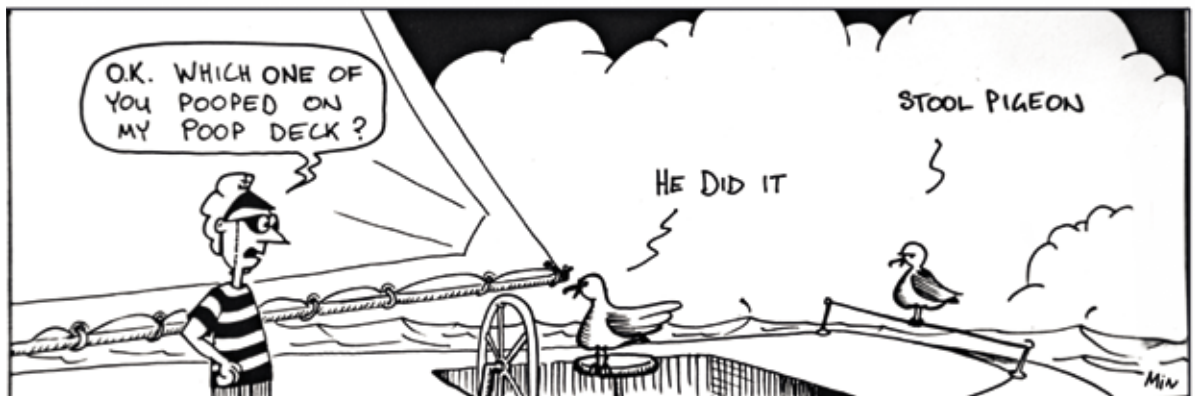
A memorial plaque in her name unveiled in the chapel at the Mission in April 1919. The parents and grandparents left their names and signature in the visitor book on 28 of April 1918.



The wedding photograph of Catherine and Herbert Aviss, Spring 1913

"SEAWEED"

The Mission has a nesting pigeon problem and are seeking advice if cats can scare them away! or of any other humane system to resolve the issue.



Click and Collect at Sea?

The Melbourne Mission (and many others) have been taking care of the Seafarers; by shopping for them, there is no click and collect in the middle of the ocean, by arranging for families to receive their pay (so they don't go hungry at home), and by making sure they have books, beanies and a few treats (thanks to donations by Good360.org.au, Rotary Prahan clubs, and our supporters such as the CWA and Mothers Union for beanies).

We do this so they have treats chocolates, essentials – vitamins, emergency glasses and medications, socks and underwear, and entertainment – games, for their mental and physical wellbeing. A delivery of fast food or doughnuts lifts the whole crews spirits. We know in their kind notes that every effort we make is appreciated.

In the past a subscription was raised by the Ladies of the Harbour Lights Guild to keep the Mission running. These days it is the Crew 717 members that pay their subscriptions that help to keep the Mission going. Many memberships have lapsed over the years and we have a special offer to everyone who signs up in the month of November. Two months FREE! Membership is only \$52 a year. JOIN NOW!



To sign up or renew now, go to

<https://missiontoseafarers.com.au/product/crew717>

MEMBERSHIP to Crew 717 provides:

- For just \$1 per week your membership helps the Mission provide services to those who work at sea.
- Membership benefits include:
- Discount on alcohol at the Mission to Seafarers Bar*
- Free use of the BBQ in the Spanish style courtyard (booking required)
- Invitation to the annual Seafarers Service at St Paul's Cathedral in October
- Enjoy regular members promotions, discounts and events*
- Copy of Ship to Shore magazine
- Members receive a 10% discount* when booking private and corporate functions including:
- Norla Dome or Celia Little Room for private dinners, parties and corporate seminars
- The St Peter the Mariner Chapel for weddings and other ceremonies
- Exclusive use of the Spanish-style courtyard to celebrate any occasion with friends, family or colleagues (booking required).

CREW CARE

We started giving away 3 prize packs on top of the care packages per ship from July.

Seafarers in some of the surveys regarding their mental health have mentioned they needed more group entertainment activities on board. The Prize packs are meant to encourage the ships to conduct recreational activities/competitions and to give the prize packs to the winners. We hope that these activities will foster strong bonding of the crew on board. A seafarer once said, "the good bonding of the crew or none thereof can immensely push faster or drag slowly the time/work/life on board a ship".



Licorice and Easter eggs from BigW for the care packs via Good360.

What we've been up to:

Tours, social gatherings, and events at the Mission

Disclaimer :

All tours and visits were conducted within the COVID-Safe workplace and public venue government guidelines of the time (in between lockdowns!).



*Tour and Lunch with members of the CWA. -
Thanks for the beanies and donations.*



*Visit and Tour with
Development Victoria team.*



*Visit from Geelong Mission to Seafarers
with Rev. Noah Park (right).*



Sue Dight and Rev Inni with Ms. Maria Lourdes M. Salcedo Consul General Head of Post (red dress) at the opening of the new Philippine Consulate in Melbourne. April 2021.



Sue Dight CEO at Whittlesea Probis with gifts from the community.



Salli and Tyson Smallman celebrate their stunning wedding in July

Thank you for caring

To the beanie knitters who passed the time during lockdown and gave the seafarers something to not only warm their heads, but also warm their hearts.

- Marion Rennie
- Wendy Veal - Ballarat Diocesan Executive Council & Townsend Group Members
- Sue Pettit - CWA Boroondara
- Ann Coish
- Barbara McBean
- Cheryl Timbury - First Fleet Association
- St Eanswythes Anglican Church
- Waverley Spinners & Weavers Inc.
- Residents at Lexington Gardens

A special mention to Joanna Alderhoven for all the bags and gifts donated for seafarers, and to those who have sent all manner of goods, including tea towels, from our call out earlier this year.

And a big thank you to those people who have collected so many stamps for us! Please send your used postage stamps to the Mission so that we can pass them on for sale.

Also to those for collecting so many stamps for us to gather donations from. You can send your used postage stamps to us at the Mission as we are able to pass them on for sale.



Caring for Seafarers
in Victorian Ports since 1857

Dates for your diaries:

October 15 - The MSC Maritime Art Prize Virtual

October 17 - Seafarers Service at St Pauls Virtual - 11am

Reopening in November

- watch our website for dates and links.

Book your 2021-22 event!

As we again move towards a 'COVID Normal', it's time to celebrate with family and friends, and to think ahead for the coming year. Every event helps to support our work looking after seafarers and maintaining our glorious heritage-listed building.

Contact

events@missiontoseafarers.com.au

Remembering the Mission beyond today

Legacies are very important to the Mission, as they allow us to continue our vital work supporting seafarers that work around the world. We have been fortunate over the years with many of the former members of the Mission remembering us in their wills, or with an ongoing legacy through a trust. We appreciate each and every donation now, but please consider the future work of the Mission.

Keep updated via the website and Mission to Seafarers Victoria social media:

Website: missiontoseafarers.com.au



Facebook:

facebook/missiontoseafarersvic



Instagram:

#mts_vic



Twitter:

@MtSVMelbourne



Mission to SEAFARERS

To Direct Deposit to our Bank Account:

Mission to Seafarers Vic Inc.

Bendigo Bank

BSB: 633 000

Account No: 133 814 400

Please put your surname as a reference then email your name, address and phone contact to admin@missiontoseafarers.com.au so we can link the donation to you.

To Donate online, visit www.missiontoseafarers.com.au/donate or complete this form and return to us.

- \$25 supports the provision of phone and internet services for contact with home.
- \$35 will support MtSV Ship Visiting.
- \$50 will support emergency night call-out to help seafarers in distress.
- \$100 will support the upkeep of MtSV on-shore facilities.

Note receipts for tax deductions will be provided upon request.
Funds will be transferred to the Seafarers Welfare Fund. Charity
ABN: 69 302 106 434



The Mission to Seafarers Victoria Inc
717 Flinders Street Docklands Vic 3008
missiontoseafarers.com.au
Charity ABN: 69 302 106 434

Please accept my gift of:

☐ \$25 ☐ \$35 ☐ \$50 ☐ \$100 ☐ Other \$ _____

☐ My cheque is enclosed to the Mission to Seafarers Victoria Inc.
Or

☐ Please debit my Visa / Mastercard

☐ Yes! Make this a monthly donation

Card number: _____

Expiry date: ____ / ____ CCV: ____

Signature: _____

Date: _____

Name: _____

Address: _____

Postcode: _____

Email: _____

Contact phone: _____