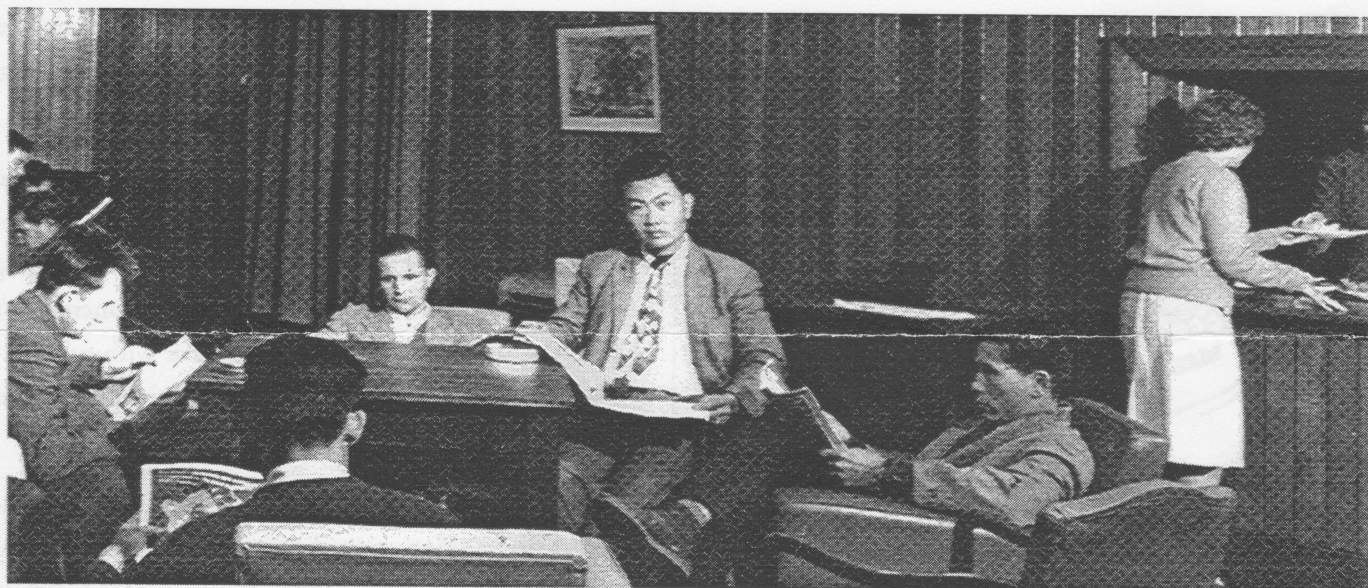


SHIP TO SHORE

The Newsletter of the Missions to Seamen Melbourne • No 4 July/August 1997



OPEN DAY BRINGS BACK MEMORIES

On Sunday July 13th the Mission held its first Open Day. About 70 people came through our doors and enjoyed a range of activities. We took three busloads of people on guided tours of a Chinese container ship, the Luo He, went on a Yarra River cruise to the docks, and finished the day with a short service in our St. Peter's mariners chapel.

It was also a day of renewing old friendships and association, as many people who visited had past contact with the Mission. There was one couple who met when they worked as volunteers at the Mission during the 1970s and were married in the chapel. We also met a lady whose links with the Mission go back more than 50 years. She was one of the founding members of our now-disbanded Harbour Lights Guild, a women's group who gave a warm welcome to sail-

ors and raised funds up until the 1960s. You can see them providing hospitality in the photo above.

We also received many positive comments in our Visitors' Book, such as, "beautiful building", "lovely day" and "keep up the good work", which were very encouraging. And several articles appeared in local and Christian newspapers, including one headed, most appropriately, "Seafarers' refuge proves that it's mission possible". Running a friendly, inviting and Christian centre for visiting seafarers on our limited resources sometimes seems an impossible task - though a very important one. But with your practical and prayer support, it can continue to be not just "mission possible", but "mission successful".

Please circulate our newsletter as widely as possible or display it on your notice board. More copies are available from the Mission. Call 9629 7083.

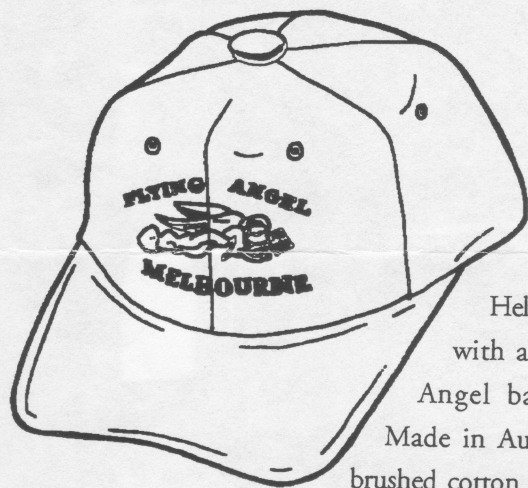
OPP SHOP UPDATE

We are one of over 130 community organisations supported by All Souls' Opportunity Shop, 46 Bay Road, Sandringham. Please help their work by donating your unwanted clothes, furniture and household goods - or going along and picking up a bargain. Phone (03) 9598 2189.

PLEASE PRAY...

- For Christians willing to give their time as volunteers
- As we encourage seamen in their faith, and share our faith through word and deed
- As we distribute Bibles and Christian literature in various languages to crew members

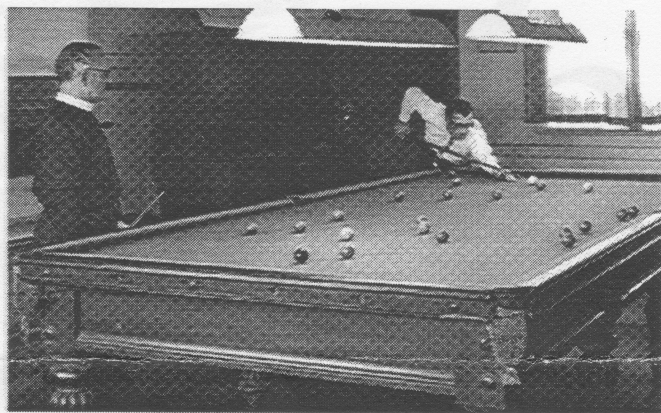
WEAR YOUR SUPPORT



Help the Mission
with a new Flying
Angel baseball cap!
Made in Australia from
brushed cotton with an em-

broidered logo, they're available in navy blue or cream, with a contrasting suede peak. Our hats are being worn all over the world - and one can be yours for just \$15, including postage and packing - or only \$12 if you come and pick it up. Use the form below for mail order.

ABOUT THE BUILDING



The first ministry to seamen in Melbourne began in the 1890s and was based at Williamstown and Port Melbourne. When the Yarra was upgraded at the turn of the century, ships began to come right up the river. A new Mission was needed to cater for the seamen, and a river-side site was selected. Although a substantial building, it did not last long, as the land was soon needed for harbour improvements.

In 1916 the current Mission was built near the original site. It was opened in September 1917 by the Governor of Victoria and the Archbishop of Melbourne. The building is made from red brick covered in rough-cast concrete. It's built in the Spanish Mission style, popular with early settlers in California. This is reflected in the open bell turret of the chapel and arched cloisters of the courtyard.

The chapel is probably the most attractive part of the building, with its striking stained glass windows in nautical themes, and the elaborate pulpit in the shape of the stern of a sailing ship, complete with rudder.

At the other end of the complex is the unusual domed gymnasium, built in 1920 to give seamen somewhere to exercise away from the cramped quarters of the ship.

BECOME A FRIEND OF THE FLYING ANGEL

Yes, I'd like to become a friend of the Flying Angel:

☐ Please send me _____ Flying Angel caps
(colours: ☐ Cream ☐ Navy blue) @ \$15 each

☐ I'll support the Missions to Seamen's work by donating:
☐ \$10 ☐ \$20 ☐ \$50 ☐ \$_____

☐ I'd like to become a volunteer. Please call me.

☐ I'd like to subscribe to **Ship to Shore**, at only \$4.00 a year for 6 issues.

Mr/Mrs/Ms/Rev _____
(Please print) Given name Surname

Address _____

Postcode _____

Phone () _____

Please return, with cheque or money order if applicable, to:

The Missions to Seamen
717 Flinders Street
Melbourne VIC 3005

