



# Ship to Shore



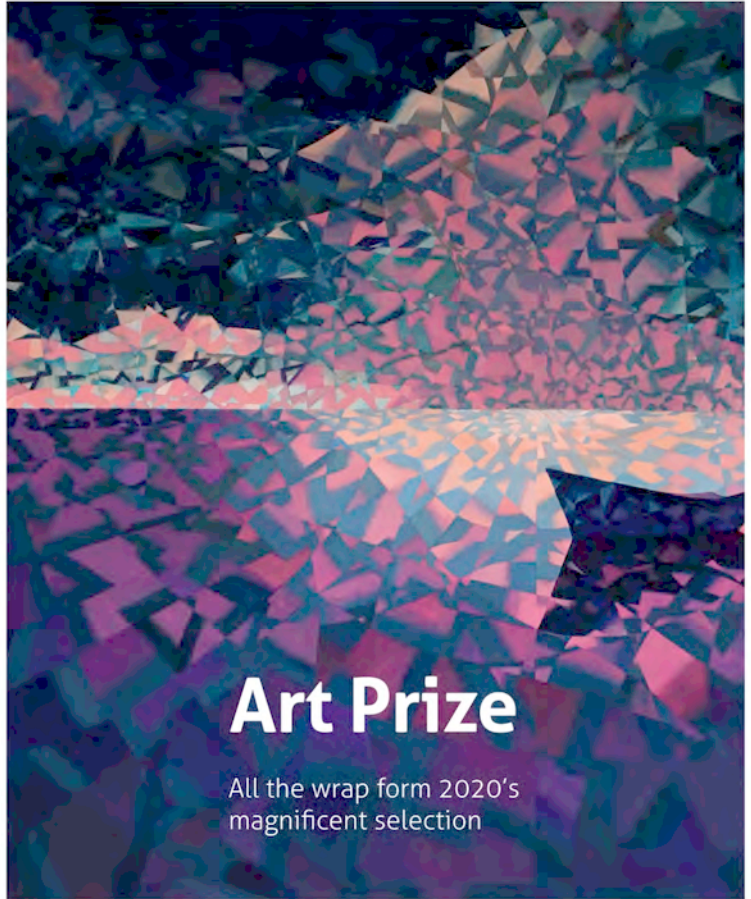
MISSION TO SEAFARERS VICTORIA Inc. CARING FOR SEAFARERS IN VICTORIAN PORTS SINCE 1857

FIRST EDITION : 2021



## Seafarers

Keeping seafarers positive in our strange era of the pandemic



## Art Prize

All the wrap form 2020's magnificent selection



## Heritage

Wonderful antiquities from a by-gone era now in our collection



## What's On

The world keeps whirling and the doors are always open



## CEO's Message

### Helping seafarers in lockdown

I was reviewing the over \$100,000 of shopping we have done since the Pandemic commenced and it's funny to see some of the items as they seem so 'everyday' to us but to the crews on board it can make a huge difference.

From socks and jocks; prescription glasses during lockdown in 24hrs; tonnes of chocolate, nuts, biscuits, donuts, and chips; disco lights; welding machines; coffee machines; Carrom Boards with extra strikers; Ding Dongs (a Filipino snack); millions of vitamins; kids toys to take home; suitcases for the lucky ones who get to go home; phones, watches, headphones, speakers and laptops to tune into family or tune out of the surroundings. Hair Clippers as there are no barbers at sea. Fruit and Veg when the providores were not able, and printer cartridges when they were

too expensive via the suppliers; cakes for birthdays, New Year and Christmas; presents for wives, girlfriends and the ship mates that are looking after each other.

We have been handed bundles of cash to send home to families who are eagerly awaiting the pay packet, but would prefer their loved one home and out of danger.

The job is a full time one, and as I packed more care packages for a crew only yesterday, I am pleased to be helping the crews. I can only imagine how the crew of the ship they were going to felt as they mourned the death of their Captain after he was medevac'd from the ship. We have delivered items not only to the gangways, but to hospitals and quarantine hotels. Noting that these crew members are lucky if they are in the relatively 'safe'

waters around Australia. With the global economic downturn piracy is up with kidnapping and ransom of the crew on the increase. As of May 2020, a 24% year-on-year increase in the global number of attacks and attempted attacks has been recorded, yet another fear do deal with on the journey.

Thank you for your support, and to the small Mission team who have been working so hard every day.

[Sue.dight@missiontoseafarers.com.au](mailto:Sue.dight@missiontoseafarers.com.au)

<https://www.icc-ccs.org/>

## COVID-19 EFFECTS ON SEAFARERS

Australian Maritime Safety Authority (AMSA): **Temporary arrangements for the maximum period of shipboard service for seafarers during COVID-19 pandemic** have been in place since 26<sup>th</sup> June 2020 has been extended till 28 February 2021. At the end of this month crews may not be allowed to serve beyond 11 months.

Outlined below, AMSA's approach to the maximum continuous period that a seafarer can serve on board a vessel in response to increasing concerns about maritime safety and seafarer welfare in the context of the COVID-19 pandemic. It also outlined AMSA's compliance and enforcement approach.

i. Where inspectors identify that a seafarer has a valid Seafarer Employment Agreement (SEA), signed by all parties, and has served on board a vessel for less than 11 months, no action will be taken.

ii. Where inspectors identify that a seafarer has a valid SEA and has served on board a vessel for more than 11 continuous months, the master will be required to provide a seafarer's repatriation plan, approved by the flag State. The plan must result in the repatriation of the seafarer before having served a maximum continuous period of 14 months.

iii. Where inspectors identify that a seafarer does not have a valid SEA, the master will be

required to facilitate a valid SEA or otherwise repatriate the seafarer.

iv. No extensions of service without taking leave beyond 14 months will be accepted by AMSA unless the master or owner demonstrate to AMSA that:

- all possible efforts have been made to repatriate the seafarer without success;
- the seafarer has provided written confirmation accepting the extension; and
- a plan to repatriate the seafarer within a month has been put in place.

# Seafarers Christmas

Remember when the postie used to bring you a nice surprise in the post?

*Images and text by Simon Burton*

“I placed the cartons on the ground then took a few steps back before three crew members of the huge container ship ship, “Maersk Surabaya” came forwards. We could hardly exchange greetings over the noise of machinery flying around us. We only have our eyes to connect. They were picking up supplies they had ordered online from the Mission. They were not expecting our Christmas gift packs. The seafarer’s eyes filled with Christmas joy! The three called and gestured their appreciation then turned and climbed the steep gangplank bearing gifts donated for their crewmates.”

Because of the Covid Pandemic Seafarers are no longer able to visit the Mission to Seafarers for respite while docked in Melbourne. Nether is the Mission’s dedicated team of ship visitors able to provide emotional and social support to seafarers unable to leave their vessels. However, the Covid crisis has not stopped the Mission from developing new ways to help Seafarers experiencing exceptional hardship because of their ongoing isolation.

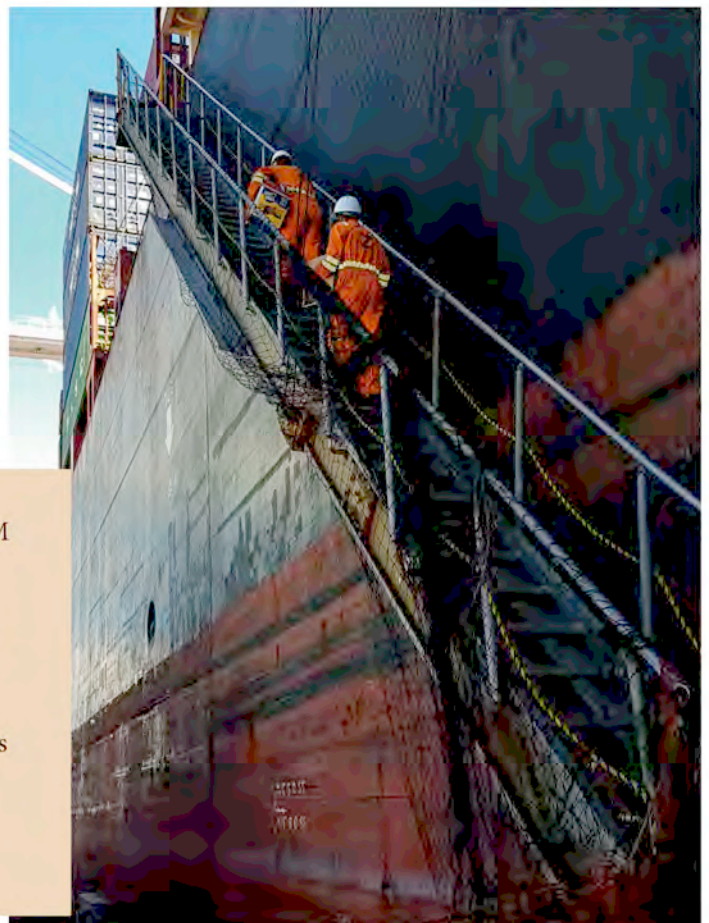
The Mission now operates an online shopping service for seafarers that enables them to order ahead so that the Mission can purchase needed items and deliver them when they arrive. This service is quite complex and labour intensive but is providing a vital service to the seafaring community who continue to play a vital role in maintaining international trade during the epidemic. We also connect via Social Media 24/7 for chats and orders.

*Visiting seafarers onboard  
Getting through COVID lockdown  
Delivering Christmas goodies and daily essentials*

“ This is a Thank you note from the crew of the ESTEEM HOUSTON for your much-appreciated efforts in a assisting the ship’s crew in procuring items & food from shore which would not have happened in these unprecedented and exceptional times of COVID-19. This really means a lot for our crew.

We hope this Thankyou note finds its way to the hearts of others around you and keep up the work you are doing assisting Seafarers.

”



# Mission to Seafarers Melbourne – Open to everyone



*Neil Edwards AM - Chairman*

**We have all been released from lock down after so many months of doing the right thing. Imagine if your lockdown was coming up to 17 months, and you have no idea when you might see your home or family again.**

There are up to 400,000 Seafarers in this situation right now; crews of men and women who deliver everything for us; including the coffee beans that make Melbourne such a special place to be. Australian Maritime laws help prevent Seafarers' isolation most of the time, by detaining and banning ships, but if you're too scared to speak up, what happens then? To help with this issue, our Mission in Melbourne provides crew with someone to speak to in confidence. It might be via whatsapp, or facebook, or text messaging late into the night, we have one of our team on standby to help. Internationally Chat to a Chaplain has received hundreds of calls for assistance.

Shore leave grants crew members a few hours to rest and relax away from their dangerous and constant work; think sinking ships, bad weather and pirates (who carry AK47's, not parrots on their shoulders). There has been no shore leave in Melbourne since the start of this pandemic, and there will be none for the foreseeable future, whilst there are still international border restrictions in place. De-escalation of the spread of the virus in Australia is great for us but without great screening in international centres where crews are signing on, there will be no relaxation at the borders. Making crew changes almost impossible.

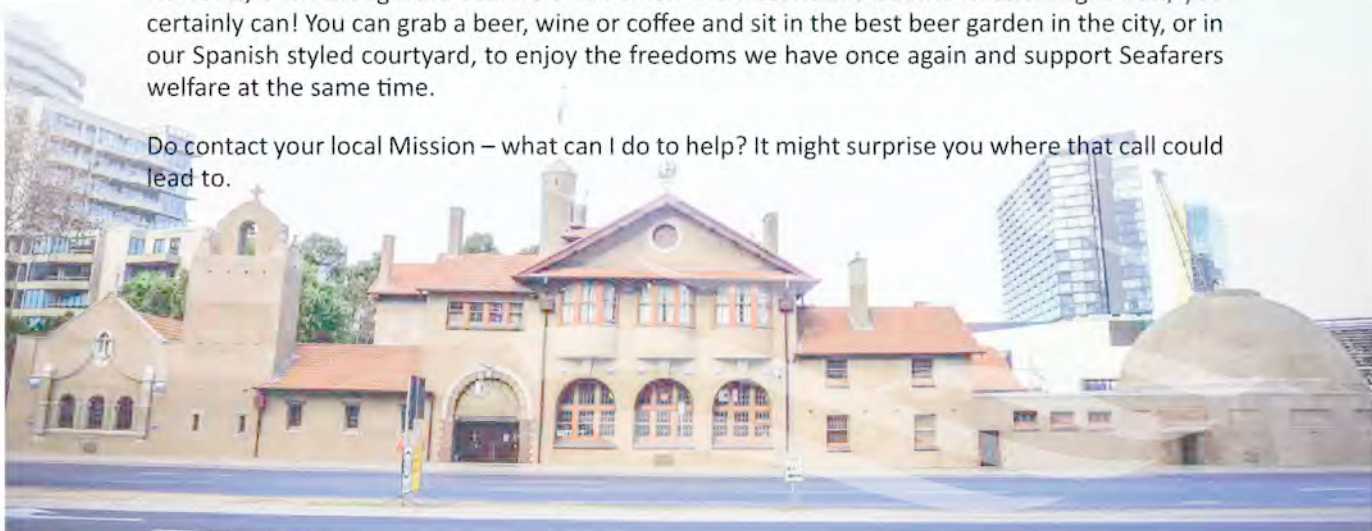
The Melbourne Mission (and many others) have been taking care of the Seafarers; by shopping for them (there is no click and collect in the middle of the ocean), by arranging for families to receive their pay (so they don't go hungry at home), and by making sure they have books, beanies and a few treats (thanks to donations by [Good360.org.au](https://www.good360.org.au), Rotary Prahan, and our supporters such as the CWA for beanies). We do this so they have treats chocolates, essentials – vitamins, emergency glasses and medications, socks and underwear, and entertainment – games, for their mental and physical wellbeing. A delivery of fast food or doughnuts lifts the whole crews spirits. We know in their kind notes that every effort we make is appreciated.

The care packs that crews receive are just a small token to show the seafarers that we value their work, they are thought about, and Missions around Australia have had some generous donors, but have also contributed with over \$385,000 of care packs distributed between March and August last year. We anticipate over 20,000 including Christmas packs will be distributed by the end of the year.

Missions around Australia are funded many ways, and the Annual Maritime Art Prize fundraiser went online this year, - <https://gallery.missiontoseafarers.com.au/>. A special congratulations to Rodney Forbes who took out the overall prize, and paintings are still available for sale. They make a fabulous gift for retirements, promotions, and to remind yourself of time at sea.

However, even though the Seafarers can't visit the historic Melbourne Mission right now, you certainly can! You can grab a beer, wine or coffee and sit in the best beer garden in the city, or in our Spanish styled courtyard, to enjoy the freedoms we have once again and support Seafarers welfare at the same time.

Do contact your local Mission – what can I do to help? It might surprise you where that call could lead to.



# THE 2020 MARITIME ART PRIZE AND EXHIBITION

Winners of the 2020 Maritime Art Prize were announced on Thursday 15th October 2020 to an international audience via an online streaming event at the Mission to Seafarers Victoria, Docklands. In what we hope is a once-in-a-lifetime event, both the much-loved opening night celebrations and the exhibition took place online due to Covid-19 restrictions in Melbourne.

More than 200 entries were received and 107 were shortlisted from a highly competitive field and included a greater number of emerging artists than previous years, all of whom responded to the theme 'The Relationship of Humanity to the Sea'. This year's judging panel - Dr. Graeme H. Williams OAM, Ms. Catherine De Boer and Mr. John Lines AM - were impressed with the high standard and diversity of entries, ranging from traditional to contemporary mixed media.

The Maritime Art Prize and Exhibition is the major fundraising initiative of the Mission to Seafarers and is only possible thanks to the generosity of our sponsors who provide the prize money and other in-kind contributions. Not to be forgotten are the artists, many of whom support the exhibition with entries every year and pay an entrance fee, in addition to a 33% commission on all works that are sold.



2020's Winning entry by Rodney Forbes  
*'A submariner dreams of home.'*

MtSV CEO Sue Dight commented that "...taking the exhibition online provided us with a global audience for the artists that have supported the Mission for so many years. Our role in supporting the seafarers is highlighted by providing the public with an understanding of the harsh and dangerous conditions that seafarers experience every day. Our immediate concern is for the 400,000 crew members globally who are stuck on board without shore leave and, for some, a way home. Isolation harms us all and seafarers are suffering more than ever. Art inspires us to remember those who are working solidly to deliver our everyday items."

The Exhibition can be viewed online, and purchases made, and we encourage everyone to continue to support the Artists <https://gallery.missiontoseafarers.com.au>

Continued >



Due to the economic vice of the pandemic and now that Jobkeeper is being removed, The Mission needs urgent help more than ever. Please consider our "Donations page" and assist if you can to keeping our doors open.

# THE 2020 MARITIME ART PRIZE AND EXHIBITION

## List of Winners

### Maritime Art Award 2020 - \$10,000

#### Rodney Forbes 'A submariner dreams of home.'

Oil on Canvas - **For sale**

Rodney Forbes is fascinated by how people tell stories. His vibrant paintings address deeply poignant subject matter through dreamlike and surreal imagery. Drawing on both autobiographical and historical events, Forbes has the masterful ability to portray sometimes dark and challenging subject matter through vibrant, cartoon-like imagery

Judges Comment:

Chair of Judges Dr. Graeme H. Williams OAM



*This year's judging resulted in the main award going to an established artist, however it was far from clear cut due to the high standard of entries and their different approaches to the theme. The winner, Rodney Forbes, first submitted for the Award in 2016 and his works have always demanded attention. It was felt that his work not only captured the essence of the theme 'The Relationship of Humanity to the Sea' but was particularly pertinent that it was based on the lot of a submariner considering the whole of Melbourne is in lockdown with a pandemic, similarly without contact with loved ones. Forbes is a master of irony and there are many layers embedded in this work, making it a worthy response to the theme.*

### 'Gulf Agency' Best Traditional Maritime Art Award - \$5,000

#### John Woodland 'Tooronga and Changte' - **Sold**

Watercolour on Paper

John Woodland is a Fellow of The Royal Art Society of NSW, Fellow of Australian Society of Marine Artists, Member Australian Watercolour Institute and Professional Member International Society of Marine Painters

Judges Comment: Ms. Catherine De Boer; Artist, Designer & Educator.

*"A softly nuanced, big impact painting, with a restful colour palette and the calm of reflective waters."*



### Emerging Artist Award - \$1,000

#### Benedict Sibley 'All Men will be Sailors'

Willow Charcoal on Arches Paper - **For sale**

Benedict Sibley recently completed a Master of Contemporary Art in 2018 at VCA. Based in Melbourne, Sibley works mainly in charcoal and explores themes surrounding migration, the environment and inclusivity.

Judges' Comments: Ms. Catherine De Boer; Artist, Designer & Educator.

*"A thought-provoking environmental portrait of refugee and award-winning novelist Behrouz Boochani."*



**'Nevile & Co' Runners Up Award - \$2,000**

Joint Winners:

Equal placings went to highly skilled and beautifully rendered artworks reflecting contemporary themes of the self, and in living with plastics in our daily lives.

**1. Orlando Durades Valdor 'Get lost to find yourself'**

Acrylic on Linen - **For sale**

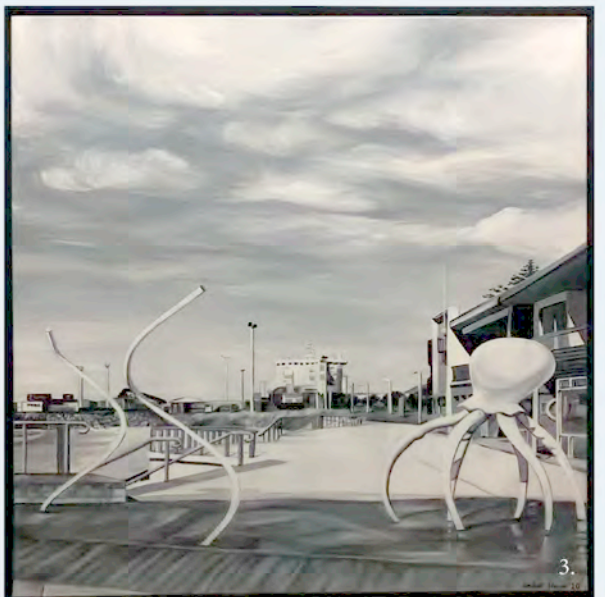
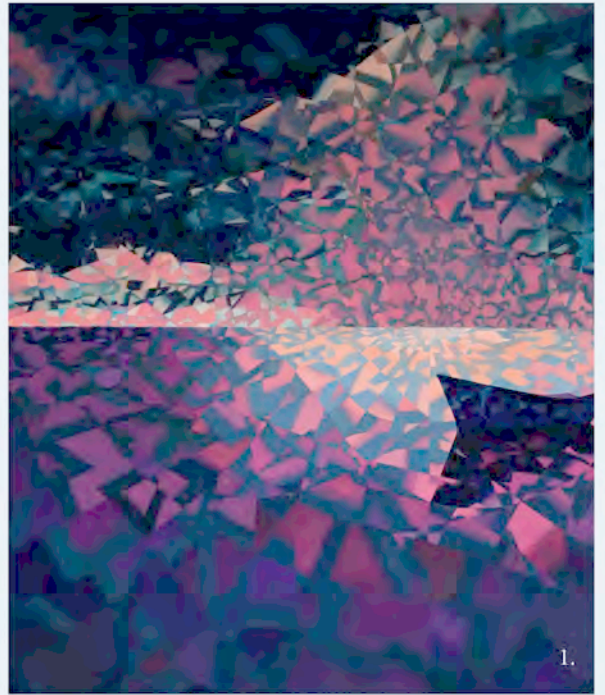
Originally from Cuba, Melbourne based visual artist Orlando Durades Valdor has been honing his skills in geometric abstraction for the past twelve years, presenting a very unique and vibrant style.

**2. Mark Seabrook 'The Catch (1938)' Oil on Canvas - Sold**

Mark Seabrook is a Melbourne-based painter and designer. His Art History degree informs much of his work, along with liberal doses of pop culture, absurdism and humour.

Winner VICT People's Choice Award

**3. Amber Simon 'Burnie Locals' - Acrylic on Canvas - For sale**



Thank you to all our 2020

AWARD SPONSORS



MAJOR SPONSORS



LEAD SPONSORS



ART SHOW DONORS



MEDIA PARTNERS



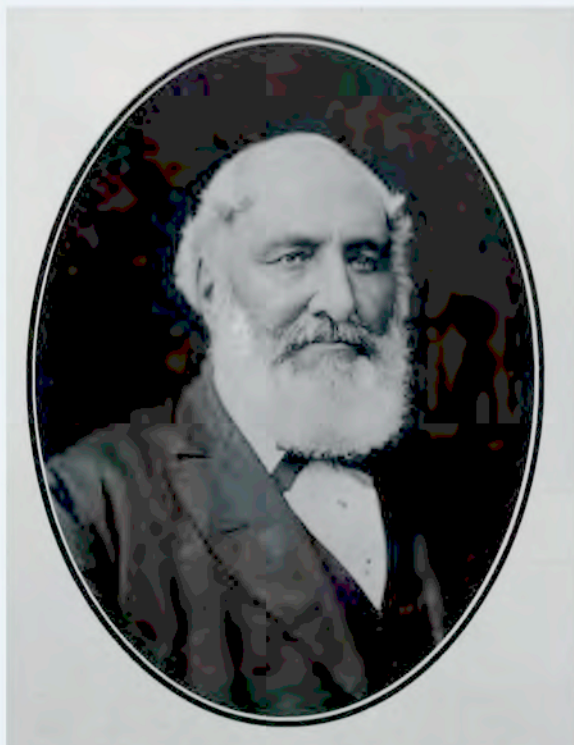
We wish to thank our wonderful sponsors for their incredible support in this, our Australia's most valuable art prize in Maritime Art.

The 2021 Awards will open for entries in May

# Maritime furniture

## An insight into a sea captain's life

*Geraldine Brault and Ros Fletcher*



*Captain James Volum*

Not only was the captain, the navigator, administrator, disciplinarian, but he was also a doctor (if none on board). He would have to have some basic knowledge and the available medicine to treat any illness and attend to the crews wounds.

So the most fascinating item of this donation is the medicine chest still fitted with all but one of its glass bottles as well as the small drawers which once contained Ether, Calomel, Epsom Salts, Gum Arabic, Camphor, Ipecacuan Powder etc.

How could we be sure these pieces were the captain's furniture? Along with the furniture Mrs Volum also donated a book: the Volum Family history compiled by William Gordon Volum.

The book retraces the fascinating and long family link to the sea, from whalers in the 18th century, to merchant mariners sailing to Australian shores, and soldiers embarking on the SS Orvieto during WWI.

The unusually named Volum family first became known in Peterhead on the NE coast of Scotland in the 18th century. They were prominent in the whaling industry which needed tough, resourceful men to prosper in that environment. William Volum was such a man.

November 2020, the Mission received a call from Mrs Lynette Volum: she wanted to donate some antique furniture inherited from her late husband. She had been hanging onto these items for more than 70 years and it was time to find a better suited place for them. The pieces once belonged to a long line of sea captains, the Volum family, originally from Peterhead, North East Scotland.

The donation comprises a desk, a washstand, a medicine chest, a candle holder, and a pencil or shaving case. The rare items, also called campaign furniture as they were also used by the British army, reveal the life at sea in the mid 19th century.

The captain's cabin would have been small and bare so he would have to bring a few portable pieces of his own furniture.

The desk/drawers come in two heavy cases: the drawers were probably for clothing and personal belongings and the top part reveals a secretary for the ship log. Each drawer has a lock and a board (missing) that would have been fitted in front to secure the whole piece tightly during heavy weather.







As whaling declined in Scotland, the next generation perpetuated the seagoing tradition becoming masters of trading vessels voyaging further afield. Of William's many children his sons William and James became regular visitors to Hobart and Port Phillip.

By 1856 James had decided to settle in Geelong joining his brother, Andrew, who had already established himself there. Together, they bought the Geelong Brewery and set up the Barwon Paper Mill at Fyansford. They became prominent citizens involving themselves in public life and philanthropy. Although neither had children to follow them, the family is remembered in the naming of a street and a health centre there.

The eldest brother, William (the younger), returned to Scotland and took up farming but he must have enjoyed his time here because when he moved to a cottage in his retirement, he named it "Geelong". One of his children, another William, returned to Geelong to join his uncles and it is a descendent of his, also William (Gordon), who researched and wrote the fascinating history of the family. This William G. Volum also co-founded the Nautical Association of Australia and edited its magazine "The Log".

Left: Desk and set of drawers  
 Top: Medicine cabinet  
 Right: Powder drawer from the medicine desk



# What's been and what's coming at the Mission

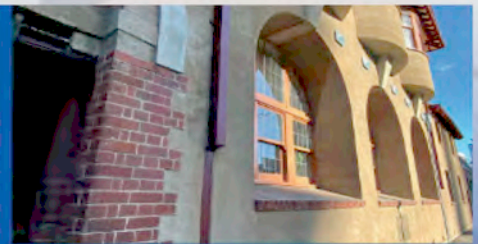


## Theatre

### *Australian Vietnamese Arts*

*'Together We Rise' was a riotous and colourful music and dance event organised and performed by the Vietnamese Community*

*The Pirate Experience*  
Every Saturday night in 2021  
Bookings at  
<https://www.queensofthedamnedcabaret.com/thepirateexperience>

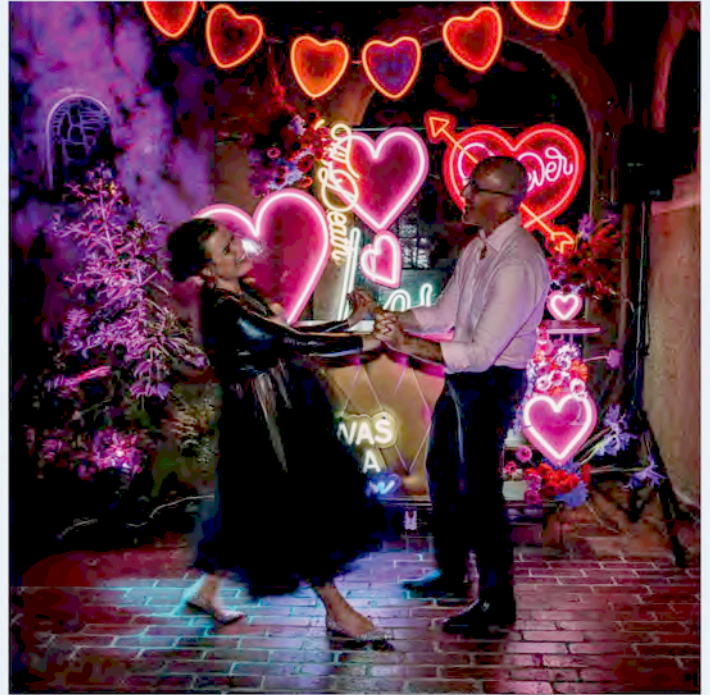


# Sundays at the Mission to Seafarers

Sundays 12pm - 4pm

717 Flinders St Docklands VIC 3008  
[info@missiontoseafarers.com.au](mailto:info@missiontoseafarers.com.au)





## Weddings

*Family and friends celebrated Sara and Adam's wedding just three days after the most recent lockdown was lifted! (photos lulu & lime)*

## Special Events

*The sun was shining for Emma's baby shower in the Mission's courtyard*

*Book your next event at the Mission - every event supports seafarers' welfare.*

*Call: 03 9629 7083 or email*

*[events@missiontoseafarers.com.au](mailto:events@missiontoseafarers.com.au)*



**Sea Shanties & Folk Songs**  
**NEWCOMERS WELCOME**  
**FREE ENTRY**

**EVERY OTHER THURSDAY FROM 7PM**  
**STARTING 18TH FEBRUARY**

**MISSION TO SEAFARERS**  
**717 FLINDERS ST DOCKLANDS**  
**BAR | COURTYARD | BEER GARDEN**



# Assistance needed

Do you know anyone who could help?

The Mission is grateful for all the people and volunteers we have supporting us.

There are many things we need to support the Seafarers and the Mission including:

- Bags to pack care pack items into
- An arborist to trim the peppercorn trees
- A new Kettle for the kitchen
- A rack to hang the brooms up in the laundry
- Men's health magazines
- Some picture hooks that work on dado rails
- New tea towels
- Large candles for the Chapel
- Fresh flowers or indoor plants if you have spares
- Anyone with time to do some fence painting

Please get in touch with us at the Mission.



## What your gifted \$\$\$ help Seafarers with



### BUY TREATS

Spirits are raised when a couple of packets of Tim Tams or donuts arrive for morning tea. Imagine eating the same thing week in week out for months on end.



### CLOTHES IN EMERGENCY

Deliver clothes to a seafarer when caught out after being medivac'd to shore. A track suit or PJs are better than a hospital gown when your recovering in hotel quarantine.



### PURCHASE VITAMINS & PPE

Not all seafarers have enough for themselves after sending home their pay for their loved ones. We help out when we can to ensure they stay fit and healthy.



### GATHER CARE PACKAGES

Good 360 Australia help match us to goods for the Seafarers and Rotary also supply from their 'Pinch a Poo' program but we still need bags to deliver them in and freight costs have to be covered.



### GIVE THEM TOYS AND BOOKS

Through the generosity of BigW, Booktopia, WH Smith we have brand new books for the ships. \$50 for fuel keeps the buses running to collect and deliver.

*Note from a crew: Thanks for the books - the last crew were all Chinese and we had nothing to read aboard. Now we have our own library!*

**THERE ARE PLENTY OF WAYS TO HELP!**

Find more at [missiontoseafarers.com.au](http://missiontoseafarers.com.au)



## A big welcome to Heidintatha Kunoo Our new assistant Chaplain

The Archbishop of Melbourne, the Rt Rev'd Dr Philip Freier and the Vicar of St Pauls East Kew, the Rev'd Canon John Sanderson are pleased to announce the appointment of the Rev'd Heidintatha (Heidin) Kunoo as an Assistant Priest at St Pauls East Kew and as an Assistant Chaplain with the Mission to Seafarers - Victoria (MtSV).

Heidin currently serves as the Assistant Priest (Curate) at Holy Trinity Anglican Church, Bacchus Marsh and previously served as the Assistant Curate at Point Lonsdale and Queenscliffe Anglican Church, and as Chaplain to the Foundation Studies Program at Trinity College, University of Melbourne.

Heidin and her family are of Karen ethnicity from Burma. Heidin has two older sisters and states that she "was born into a strong Christian family and church is my second home." Because of the civil war Heidin and her family moved to Australia in 2005 and Heidin subsequently graduated with a BTheol from Trinity College Theological School in 2016 before ordination in the Diocese of Melbourne in 2017.

Heidin originally thought that she might like to become a missionary in developing countries, "but God is calling me to be ordained and serve in His church."

Fr John says, "We are thrilled that Heidin has discerned a call to serve here at St Pauls and with the Mission to the Seafarers in Docklands. A humble priest with a gentle presence who has exercised a ministry of presence and care in her curacies and amongst the broader community we are overjoyed that she has accepted the invitation to be part of the community not only here in East Kew, but also with St Georges in East Ivanhoe and the Mission in Docklands."

Heidin will be welcomed and commissioned into this new role during public worship on Sunday 18 April, 2021. The Rev'd Gail Bryce who has cared for this community for over a year now will be farewelled at services on Sunday 11 April, 2021. Please uphold Gail and Heidin in your prayers in this time of transition, and pray for the community at Holy Trinity Bacchus Marsh as they farewell a much loved priest and friend.



## Do you know why seafarers should be called key workers?

Ports are an essential node in the global supply chain, to facilitate trade and contribute to the economy. This underpins growth in trade and enhances prosperity and opportunity for everyone. The Port's operations bring in a multitude of goods and materials that help us live our daily lives, build new infrastructure and operate successful businesses. Similarly, millions of tonnes of goods leave our shores from the Port, supporting Australia's goods industry.

- Port of Melbourne handles more than one-third of Australia's container trade, contributing around \$7.5 billion to the Australian economy each year and around \$6 billion to the Victorian economy annually.
- Port of Melbourne is also a significant part of the Tasmanian economy, with recent economic analysis showing that Port operations generated economic benefits worth \$600 million to Tasmania over 2017-18.\*
- The Port is also a major source of local, state and national employment, with many of the Port's functions and activities across the import and export supply chain creating and supporting thousands of jobs.
- Each vessel visiting the Port of Melbourne brings an estimated average of \$1,850,000 in benefits for the Victorian economy, including \$500,000 in household income and six full-time equivalent jobs.



**Maritime Super**  
OUR FUTURE



*Your industry super fund*

Maritime Super is one of Australia's longest running super funds having provided financial security to generations of members.

We're also part of the Industry SuperFunds collective that carry the symbol you can trust — run only to benefit members.

We're all about helping members make the most of their super, that's why we are the fund of choice for maritime workers.

To learn more about Maritime Super or how to join — call us on **1800 757 607**



*Above: Ship Team after Christmas bag packing*

*Right: Packages ready to send out*

*Below: David Rosenberg of Rotary Club Prahran and Sue Dight receiving boxes of "pinch a poo" Toiletries donations for the Seafarers.*



# Crew change update

*Rev. Onofre (Inni) Punay*

Crew change is now happening in some ports around the world. There is also now an option for shipping companies to divert ships to where the on-signers are (like the Philippines for instance). Australia of course has always claimed crew change has always been allowed albeit it is nearly impossible to happen due to the mandatory quarantine, unavailable international flights, and other restrictions.

Brisbane - which does not impose mandatory 14 days quarantine for the seafarers became the main venue for crew changes here in Australia.

Port of Melbourne has protocols in place **prior** to the ceasing of international flights that makes it almost impossible. For International crew signing off and leaving via air; they are permitted to leave their ship to board an international flight if leaving the same day or they have to go into mandatory quarantine until their flight (or 14 days whichever comes first). For all **Maritime workers entering Australia to work they** can board a ship directly if the ship is departing for an international port within 48 hours. Must use private transport (no-one has asked us and bus operators are making a fortune) and adopt social distancing where appropriate. Otherwise must quarantine for 14 days upon arrival, or until ship departs for overseas port. Exemptions available on a case by case basis.

Crew must remain on board unless performing essential functions.

## Services to the seafarers

With crew changes now happening globally, the 24/7 services we have been supplying to the seafarers is diminishing as they are now less on social media chat as the news is more stable. (Time spent was not time regulated and only applicable during lockdowns). The Missions main service now has shifted to procuring personal needs to crews who are coming to Melbourne. This is mostly done through direct contact with the ships prior to their arrival through emails, whatsapp, and facebook. We have received loads of notes of appreciation from ships for this service (even those ships who have not sent requests for assistance). I also often see port workers giving thumbs up sign when they see me delivering goods especially the care packages to the vessels. Thanks to the very generous gifts from some private donors, Rightship Melbourne Team, MIAL, Good360, BigW, Booktopia, First Fleet Association, City Light Church we were able to pack over 800 gift bags and hampers for the crews this Christmas. We have also delivered over 600 dilly bags with toiletries in them thanks to Joanna Alderhoven, Palmolive and Rotary Prahan. In each of these bags is a gift of a beanie.

Ship visiting unfortunately is still not allowed but we are able to share your care through the gifts we supply and the prayers we offer.



# Activity returns to the Mission

Opening to the new normal is like waking slowly in a new place that you don't recognise where you are and you don't speak the language.

We are all familiar with the inside of the supermarkets, as they all look the same in each suburb around the country. Easy to navigate, comfortable, recognisable.

Now we are able to emerge from our familiar to explore what we have missed, to gather together to catch up with friends, family and gain new experiences. When was the last time you explored Melbourne? Travel is back, but to where? Melbourne has so much within walking distance to explore – and is free!

Have you thought about a lie down and look up tour? Take yourself on a journey around the city of the best dome/ceiling structures where you can lie down and study the roof. It might be the beautiful stained glass roof at the NGV; the former banking hall of 333 Collins; The friezes in the arcade at Manchester Unity Building; The Reading Room dome or Queens Hall glass roof in the State Library; and the great Churches and Cathedrals of Melbourne are all looking forward to visitors. The last stop should be the Mission to Seafarers for a look though the oculus in the top of the Dome. You might find an exhibition on, a performance, or just stare at the clouds. You can then explore the rest of the place or stop for a drink in the bar, courtyard or our secret garden.

Join us at the Mission as we reward the Seafarers who have kept working all through the lock down, and continue to be confined to their ships without leave. We have goody bags for them, but what would make it truly special would be a phone card to call home with. Drop in and buy one for a seafarer and we will ensure it goes directly to a sailor in need. Just like the one we delivered to a seafarer as he was waiting in a local quarantine hotel as he had an accident on board whilst in Port Philip Bay. He was waiting to go home after being discharged from hospital after crushing several fingers. We delivered clothes, a care package and a phonecard to comfort him (when we get through all the DHHS protocols), until he could be home with his family.

## Beanies - Donors

To the knitters who found something to do during the lockdown that gave the seafarers not only something to warm their heads, but it warmed their hearts.

- Judith Bond      Menzies Malvern Knitters
- J MacLeod
- Rev. Westaway      St Barnabas and Friends Mothers Union Balwyn
- Carol Barker
- Toni Tyers
- Mrs Cheryl Wing
- Mrs Lesley Boyd      St Matthew's Cheltenham
- K Libbis
- Chris Hosking
- Jan Rosenburg
- E Storr      Holy Spirit Mothers Union
- Natalie Stevens      Ballarat Diocesan GFS Executive Council and Townsend Members
- Rosemary Cotter
- Fay Glover      CWA Yarrowonga
- Diana Lerk
- Lyn McLindin      Avon Branch - CWA
- Marion Rennie      St Eanswythes Anglican Church Altona
- Mothers Union      Holy Trinity Anglican Church Hampton

And thank you for collecting so many stamps for us to gather donations from:

Dr Irgard Bauer, John Bell, Mairilyn Carnweil, K. Libbis, Ms D Marquardt and Jan Rosenburg.

You can send your used postage stamps to us at the Mission as we are able to pass them on for sale.



Caring for Seafarers  
in Victorian Ports since 1857

## Dates for your diaries:

- March 4**  
- Sea Shanties & Folk Songs Sing-a-long (every second week)
- March 17** - Celtic Festival
- April 18** - Melbourne Heritage Festival (Free Talk)
- April 25** - ANZAC DAY
- July 12** - Sea Sunday
- October 1** - Maritime Art Prize
- October 24** - Seafarers Service at St Pauls

## Book your 2021 event!

As we move towards a 'COVID Normal' it's time to celebrate with family and friends, and to think ahead for the coming year. Every event helps to support our work looking after seafarers and maintaining our glorious heritage-listed building.

**Contact**  
events@missiontoseafarers.com.au

## Remembering the Mission beyond today

Legacies are very important to the Mission, as they allow us to continue our vital work supporting seafarers that work around the world. We have been fortunate over the years with many of the former members of the Mission remembering us in their wills, or with an ongoing legacy through a trust. We appreciate each and every donation now, but please consider the future work of the Mission.

Keep updated via the website and Mission to Seafarers Victoria social media:

Website: [missiontoseafarers.com.au](http://missiontoseafarers.com.au)



Facebook:  
facebook/missiontoseafarersvic



Instagram:  
#mts\_vic



Twitter:  
@MtSVMelbourne



# Mission to SEAFARERS

To Direct Deposit to our Bank Account:  
Mission to Seafarers Vic Inc.  
Bendigo Bank  
BSB: 633 000  
Account No: 133 814 400

Please put your surname as a reference then email your name, address and phone contact to [admin@missiontoseafarers.com.au](mailto:admin@missiontoseafarers.com.au) so we can link the donation to you.

To Donate online, visit [www.missiontoseafarers.com.au/donate](http://www.missiontoseafarers.com.au/donate) or complete this form and return to us.

- \$25** supports the provision of phone and internet services for contact with home.
- \$35** will support MtSV Ship Visiting.
- \$50** will support emergency night call-out to help seafarers in distress.
- \$100** will support the upkeep of MtSV on-shore facilities.

Please accept my gift of:

\$25     \$35     \$50     \$100     Other \$ \_\_\_\_\_

My cheque is enclosed to the Mission to Seafarers Victoria Inc.  
Or

Please debit my Visa / Mastercard

Yes! Make this a monthly donation

Card number: \_\_\_\_\_

Expiry date: \_\_\_\_ / \_\_\_\_      CCV: \_\_\_\_

Signature: \_\_\_\_\_

Date: \_\_\_\_\_

Name: \_\_\_\_\_

Address: \_\_\_\_\_

Postcode: \_\_\_\_\_

Email: \_\_\_\_\_

Contact phone: \_\_\_\_\_



The Mission to Seafarers Victoria Inc  
717 Flinders Street Docklands Vic 3008  
[missiontoseafarers.com.au](http://missiontoseafarers.com.au)  
Charity ABN: 69 302 106 434