

Heathmont
Community Bank® Branch

Bendigo Bank

This brochure is sponsored by the Heathmont Community Bank, a long-time supporter of both the Heathmont History Group and the HUC Community Lifestyle Centre.

A group celebrating the Station's 80th in 2006. The central figure, local Doug Muller, had also been present at the Opening in 1926!



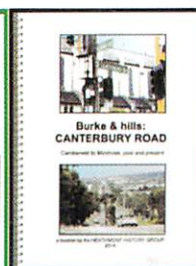
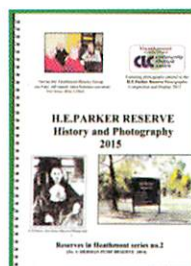
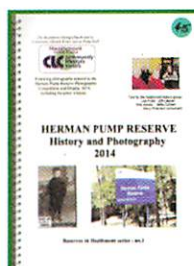
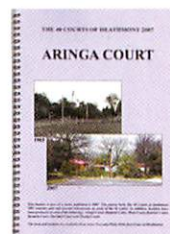
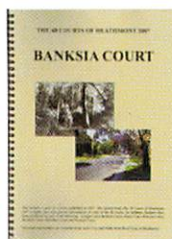
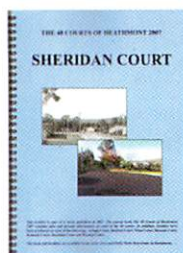
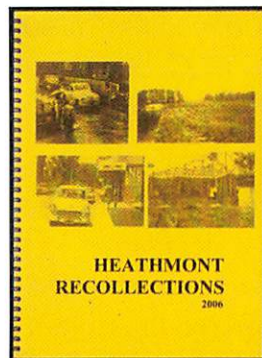
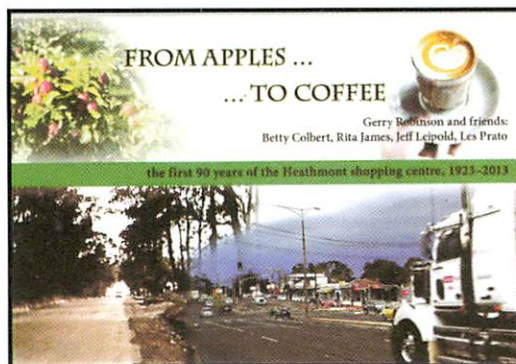
Heathmont
Uniting Church
CLC community
lifestyle
centre

The HUC CLC started in 2007 as a community outreach, using the Church buildings to provide a range of courses and activities. In its 10 years as our Heathmont community centre, it has offered 54 different activities, in a range from exercise classes to painting, languages, photography, poetry, cooking, guitar, meditation and migrant English.

Look for our booklets each term.
Enrol for fun, fitness and fellowship!

0437 758 281

4740



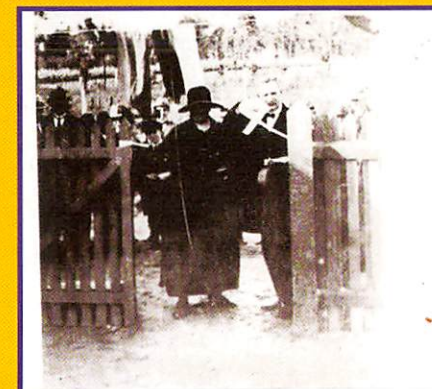
HEATHMONT HISTORY GROUP
Ringwood & District Historical Society
0418 867 255

4740

May 1st 1926 – May 1st 2016

Happy 90th Birthday

HEATHMONT RAILWAY STATION



May 1st 1926
Opening of the Heathmont Railway Station
Mrs. Herman Pump cutting the ribbon.

Sunday May 1st 2016

1.00pm Re-enactment
at the station

using the same scissors as in 1926!
HEATHMONT HISTORY GROUP
Ringwood & District Historical Society

2.00pm Birthday Concert
at Heathmont Uniting Church

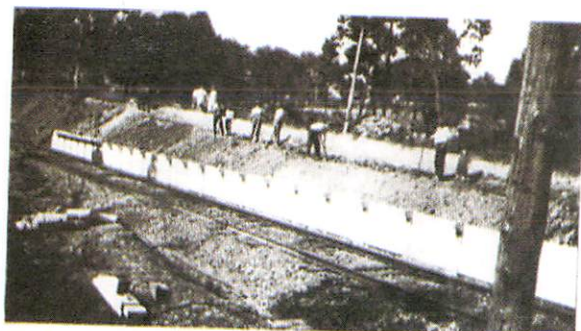
Legends of Brass big band
Barbershop quartet
Train songs singalong

Heathmont
Uniting Church
CLC community
lifestyle
centre

2016

- * 120 years since Herman Pump bought land in Heathmont (1896)
- * **90 years since the opening of the Heathmont railway station (1926)**
- * 70 years since the opening of Cuttings general store (1946)
- * 60 years since the formation of the Heathmont Football Club (1956)
- * 60 years since Heathmont's Ron Clarke lit the Olympic flame (1956)
- * 50 years since the Washusens sold the last Heathmont orchard (1966)
- * 50 years since the opening of the first Heathmont "coffee lounge" (1966)
- * 40 years since the first Heathmont traffic lights (1976)
- * 10 years since the publication of "Heathmont Recollections" (2006)
- * and the 10th year since the formation of the HUC CLC, during which time more than 50 activities and courses have been offered to the community.

In 1923 at a meeting of the local Progress League, orchardist Fred Wieland suggested the name "Heathmont" for the district. (Combining plant and build was not unusual: Lily dale, Box Hill, Ferntree Gully. . .) Under the presidency of Herman Pump, the League made a deputation to the Railways Department, seeking a local station on the line to Fern Tree Gully, which had opened in 1889. Railway representatives visited Heathmont on August 5th 1924, and local residents offered the Commissioners 1250 pounds and 300 pounds worth of earthworks. The offer was refused and on August 16th the Department advised that they would build the station at a cost of 2297 pounds! Negotiations followed, and in June 1925 the League was informed that an offer of 1400 pounds plus earthworks was accepted. In November that year the Wieland family with their horse-drawn scoops began the construction of the station, with all local orchardists contributing to the cost. As they subdivided estates near the station, local estate agents McLean & Cotter soon popularised the name "Heathmont." The district's MLA, W.H.Everard, opened the station at 3 pm, May 1st 1926, with the honour of cutting the ribbon given to Mrs Herman Pump, wife of the President of the Progress League and Chairman of its Railway Committee.



Epacris
impressa
common heath



May 1st, 1926
Opening of the Heathmont Railway Station

When Brian Pump visited Heathmont in 2014 for the CLC Herman Pump Reserve photography competition he presented to Russ Haines, President of the Ringwood & District Historical Society, a case containing the scissors which his grandmother used to cut the ribbon and declare open the Station 88 years earlier. Local historian Rita James, aged 96, is using these same scissors in our 2016 re-enactment.



* * *



It is no surprise that the Heathmont History Group uses heath as its symbol. From the 1890's, Field Naturalists clubs held walks to admire the local flora, especially the pink and white heath (*Epacris impressa*). There are still some areas of native bushland in Heathmont, including the FJC Rogers Reserve next to the railway station. Fred Rogers, a local school headmaster, was president of the Society for Growing Australian Plants, a founder of the Ringwood Field Naturalists Club, and a well-known author and lecturer. The Reserve was named after him in 1973.

In term 3 this year the Heathmont Uniting Church Community Lifestyle Centre is having its third local annual photography competition and display, and the topic is the FJC Rogers Reserve and surrounds. All may enter!