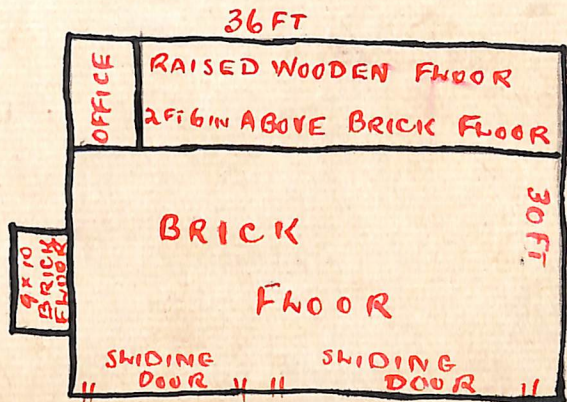
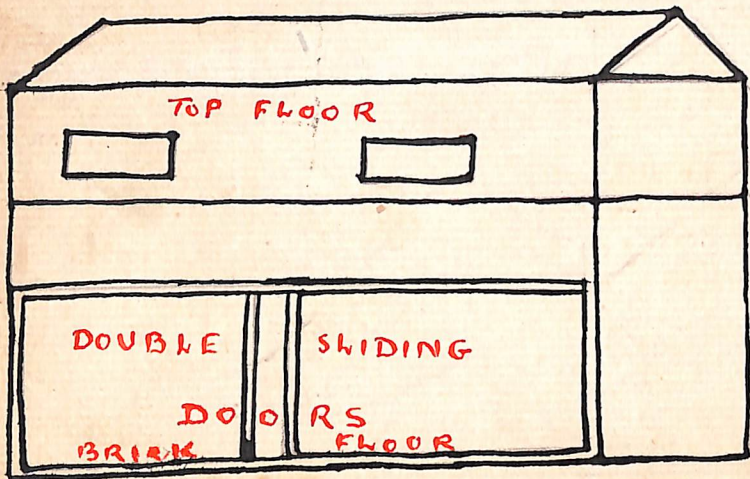


1B ROUGH SKETCH OF BUILDING

3796h Aug 1939



"My Case" Sauce Manufacturing Pty Ltd

DESCRIPTION OF BUILDING

proposed by

MY EASE (VICT.) PTY. LTD.

as factory

FOR MANUFACTURING WORCESTERSHIRE SAUCE .

3796h

Aug 1929

1A

The building was originally built for apple drying.

It is built of hardwood weatherboard, with corrugated iron roof.

Two storeys with wooden stair case, inside the building, water and electric light.

Outside measurements, 36 feet x 30 feet. Height 18 feet from floor to eaves, 7 feet from level of eaves to ridge.

Top floor 12 feet above ground floor.

Ground floor, Brick floor, walls lined with sheet iron.

Brick Room 8 feet x 9 feet.

Top floor consists of laths 1 inch x 1 inch, $\frac{3}{8}$ " apart and top room partly lined with baltic.

Double doors in front, also 2 windows; single doors in top and bottom floor.

4 windows in back of building.