

PROGRAMME.

©

WEDNESDAY, DECEMBER 29, 8 p.m.
Pictures—Ringwood Town Hall

NEW YEAR'S EVE, 8 p.m.
Festival Ball—Ringwood Town Hall

SATURDAY, JANUARY 1st, 8 p.m.
Pictures—Ringwood Town Hall

SUNDAY, JANUARY 2nd, 3 p.m.
Pleasant Afternoon—Ringwood Lake
Program and Brass Band

MONDAY, JANUARY 3rd, 8 p.m.
Pictures—Ringwood Town Hall

TUESDAY, JANUARY 4th, 8 p.m.
Travelling Theatre—Council of Adult
Education—Ringwood Town Hall

WEDNESDAY, JANUARY 5th, 8 p.m.
Pictures—Ringwood Town Hall

THURSDAY, JANUARY 6th, 8 p.m.
Scout Concert—Ringwood Town Hall

SATURDAY, JANUARY 8th
12 to 5.30 p.m.—Athletic Carnival
Ringwood Recreation Reserve
8 p.m.—Pictures Town Hall

OTHER ATTRACTIONS

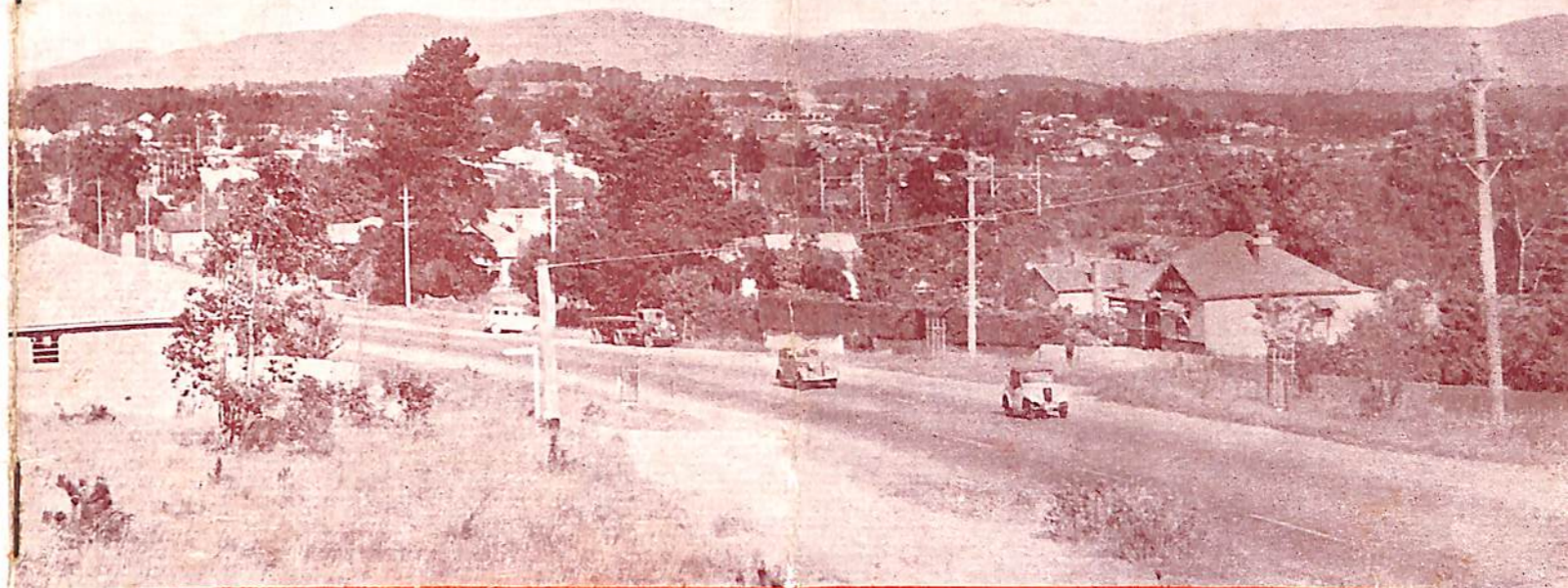
Ringwood Bowling Club—Tournaments every afternoon.

Ringwood Baths—Open each day.

Saturday Afternoons—

Archery and Cycling

Golf Links—Park Orchard



WELCOME TO **RINGWOOD**

A WELCOME

By the Mayor of Ringwood

To Our Visitors

THE PREPARATION OF THIS BOOKLET IS THE OUTCOME
OF CIVIC PRIDE

☆

When "Yarra Brae" was chosen as a site for the Pan Pacific Scout Jamboree, Ringwood, because of its position, became the gateway to the Jamboree. It was realised that people from many towns and countries would be passing through the Borough on their way to the Jamboree. Steps were taken by my council to ensure that during your stay in the district your impressions of Ringwood would be pleasant ones.

We are proud of our district, as, in addition to the beautiful setting for which our Town is noted, we possess that rare and more valuable asset—Friendliness.

On behalf of my Council and the People of Ringwood, I extend to all a hearty welcome.

Yours sincerely

H. J. Pearson

Mayor

RINGWOOD Past & Present

Nearly 100 years ago a man named Thomas built an unpretentious shack of rough bush timber on a winding bush track fifteen miles from Melbourne.

The shanty became known as the Coach and Horses Hotel, and around the spot began to grow the township now known as Ringwood.

The hotel became the stopping place for the bullock teams, the second stage for Cobb & Co.'s coaches to the goldfields, and the rendezvous of the miners of 1850.

The slow moving bullock wagons, blazing the trail, formed what was known for many years as the "White Horse" road, and now proclaimed the "Maroondah Highway."

Then came Cobb & Co.'s coaches, the opening of the antimony mine, the establishment of brick works at East Ringwood and, in 1883, the opening of the railway.



MAIN STREET, RINGWOOD

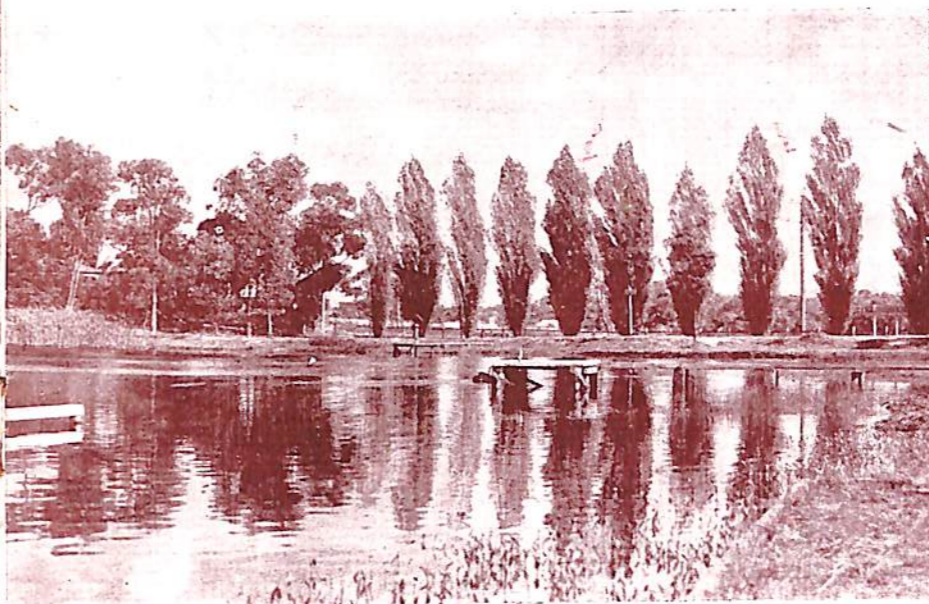
The advent of the railway opened up the district. Bush land was transformed into orchards—and soon Ringwood became known as a thriving orchard district.

In 1924 the Borough of Ringwood was formed, comprising nine square miles.

Roads were constructed, paths and drains formed, a town hall built, municipal baths constructed, a fire station, infant welfare centre, schools and other amenities established.

To-day—December, 1948—Ringwood, with a population of 5,000 and increasing every month, is a thriving suburban yet country residential area. It has glorious views, the open spaces, the natural bush land, the background of the Dandenong Ranges—and with these it also possesses a good highway to the city.

Consult our estate agents—buy a block of land and build a home in Ringwood!



THE RINGWOOD LAKE

Another stage in Ringwood's development was the period following the war, when the Ringwood bus service opened up outlying parts of the Borough. Building blocks were bought, industries established, and a shopping centre was formed.

There are beautiful land sites available for lovely homes, land available for business and industrial projects—it has everything to make a town urban yet suburban. There are opportunities here for business, industry and homes.

The Borough Council has donated 12 acres of land as a site for a multi-purpose school, and it is hoped to build a hospital on the site in the near future. High schools and colleges are within easy distance of the Borough.

Train Service.—The train journey to Melbourne takes 38 minutes. Ringwood is served by 61 down and 61 up trains daily, and approximately four goods trains. The average number of person travelling to Melbourne or the inner suburbs daily is 900. This refers to outward journeys only. The revenue for October, 1948, was £2,921.



Beautiful Ringwood

Panoramic View of Ringwood, taken from the home of Dr. Geoffrey A. Cook, Loughnan Road, Ringwood.

Situated 15 miles from Melbourne, Ringwood is a modern and progressive town, with a fast and frequent electric train service and a modern bus service. It possesses all the advantages of an inner suburb, yet a feature that has led many people to settle in Ringwood is its open spaces. The greater part of the district still comprises orchards, flower farms and wooded areas. No matter where you live, a walk of five minutes will take you to the open spaces.

It is recognised as being one of the best flower growing districts in Victoria. In 1946 and '47 the Horticultural Society won the floral display at the Royal Horticultural Show, against all comers. A visit to the local Spring and Autumn Shows will demonstrate what the district can produce in the way of flowers, fruit and vegetables.

RINGWOOD and You . .

AN ideal residential area, Ringwood offers many attractions to the home builder. There are good building blocks with beautiful panoramic views, in attractive surroundings in a healthy locality.

HEALTH.—Ringwood is proud of its reputation for being a healthy town. Fresh air and open spaces, allied with a plentiful supply of fresh food-stuffs, have played a part in this.

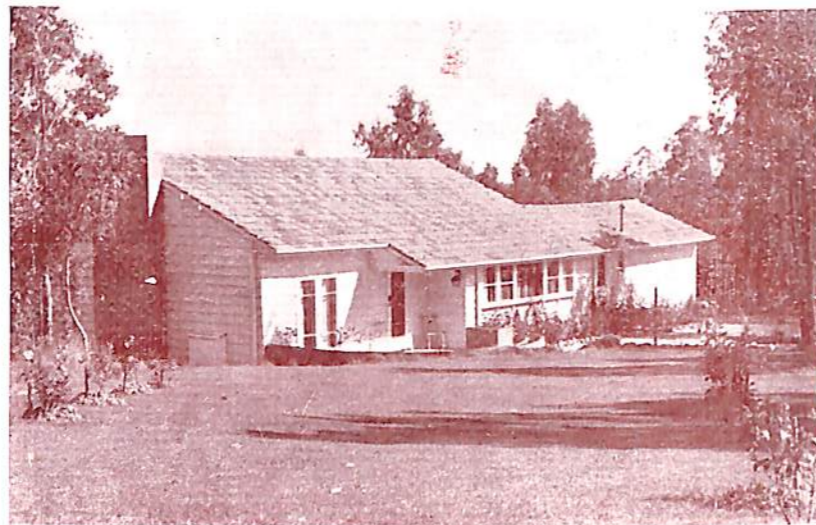
There are two doctors practising in the Borough, and a private hospital—which deals mainly with maternity cases. There is an Infant Welfare Centre with a Sister in attendance, and a Pre-school Centre. A modern dental surgery, with several dentists in attendance, is right at the station entrance.

There is a modern fire station, equipped with up-to-date fire fighting appliances. The postal arrangements are good, with a modern post office and a twice-a-day mail delivery. Recently, an automatic telephone service has been installed.

An efficient taxi service is available, with six taxis operating.

EDUCATION.—Educational facilities are: A Grammar school, three conveniently placed State schools, and a Catholic school. A Multi-purpose school will be established in the next few years.

RECREATION.—There are five recreation reserves in the Borough—for cricket, football, and soccer clubs. The municipal baths and public tennis courts are well patronised. The picturesque bowling green has a membership of over 70, and can accommodate more.



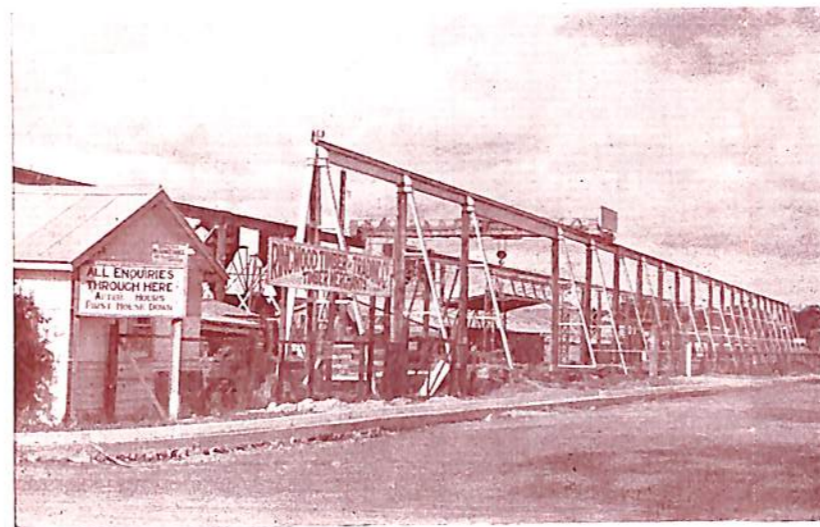
“Hearth,” Home of Misses J. Parker & L. Williams

A new sports ground of over 40 acres has been acquired, and will be made available for sport in the near future.

ORGANISATIONS.—The Horticultural Society has done a great job in inculcating a love of horticulture in the minds of citizens. It has a membership of 200.

ARTS and CRAFTS SOCIETY.—Established three years ago, this society is doing a great work in developing local talent.

CO-OPERATIVE HOUSING SOCIETY.—This society, which has been operating only a few years, has



Ringwood Timber and Trading Co., Saw Mills

197 members. Share value allotted amounts to £200,000, dwellings completed 42, and in course of erection 61.

There are various hospital auxiliaries, two progress associations, sporting clubs, a brass band, and a picture theatre.

It doesn't matter what your interests may be, you'll find something of interest in Ringwood.

SHOPPING FACILITIES.—The aim of the Business and Commerce Association is to make Ringwood a *real shopping centre*. On Fridays and Saturdays particularly the shops in the Main street are crowded with busy shoppers.

The shops comprise: Butchers (4), grocers (4), drapers (2), tailors and mercers (2), delicatessen, chemists (2), fruit and vegetables (5), cafes, confectionery, soft drinks (6), tea rooms (3), hardware (4), furniture (3), plumbers (3), grain and produce (2), news agency, garages (5), dry cleaners (1 and 5 agencies), lingerie, millinery, frocks, beauty salons (2), hairdressers (3), estate agents (4), boots and shoes (3), toys, jeweller, cake shops (3), florist (1), radio and

electrical (3), sporting goods (3), newspaper and printing.

INDUSTRIES.—Fruit growing has been and still is Ringwood's main industry. It is also a famous flower growing district. The chrysanthemum gardens of Cr. B. Hubbard are world renowned. It can also boast of having the leading show dahlia grower in Victoria in Mr. Geo. Burns. These two growers have secured more prizes at the metropolitan shows than any other two growers in Victoria. *Ringwood can produce fruit and flowers.*

With the rapid development of the district orchard land is becoming of greater value for subdivisional purposes, and is being subdivided for residential and industrial sites.

Over the past four years there has been considerable industrial development. In addition to a number of smaller factories, several large industries have started manufacturing in the district and are already providing employment for over 500 of the local residents. Permanent work in your own home town means a saving of fares, elimination of tiring travelling and early rising, and more leisure for recreation.

With the construction of a large modern factory in progress, Holeproof will in the near future transfer from their present temporary buildings and will be increasing their staff to 200.

Merlin Confections, manufacturers of high-grade chocolates, are only awaiting the easing of material shortages before expanding their business.

The Ringwood Timber and Trading Co., regarded as the most up-to-date of its kind in Victoria, is extending, and provides opportunities for local workers.

This booklet has been produced under the auspices of the Ringwood Business and Commerce Association, comprising:—

A. J. Bailey (chemist), A. F. Bisset (grain and produce), Ajax Hardware Co., Alan Coffey Motors Pty. Ltd., C. E. Carter and Son (estate agents), R. K. Dickson (fruiterer), Foy and Gibson (drapery and general store), Harder's Fruit Supply, Holeproof Ltd. (hosiery), Miss Hann (tea rooms), F. W. Jones (delicatessen), Mocha Cafe, A. H. Harcourt (confectionery and catering), Merlin Confections (chocolates), T. Mathieson Service Station, K. Marshall (jeweller), Osmond's Food Centre (meat, fruit, vegetables), Ringwood

Mercery Centre (J. W. Gillespie), Ringwood Drapery Store (drapers and mercers), Ringwood Bus Service (E. Stewart), Ringwood Motors Pty. Ltd. (W. Wademan), K. Rees (tailor), Regal

Cafe, J. and J. Delahunty (cakes and confectionery), Ringwood and Croydon Mail Pty. Ltd. (printers and publishers), Stoney's Super Service (radio and electrical), N. Sinclair (grocer), J. M. Wilson Pty. Ltd. (butcher), Ward's News Agency, K. Williams (furniture and radio), D. W. Stewart (shoes and drapery), Roy White (shoes and boots).

WHAT RINGWOOD OFFERS YOU!

Delightful surroundings in which to build a home.

Opportunity for Business and Industry.

Work in the District.

A Healthy Country Atmosphere with all the Amenities of the City.

A Hearty Welcome!

BOROUGH REVENUE.

	1924	1948
General Account	£6,833	£22,459
Water Account	£2,396	£7,525
Private Streets Account ..	£110	£3,300
Houses	600	1,450
Residents	2,000	5,000
Net Annual Value	£55,687	£90,496
Capital Value	£1,013,740	£1,809,920
Annual Revenue	£6,833	£33,284



Frank Pyke's Apple Orchard