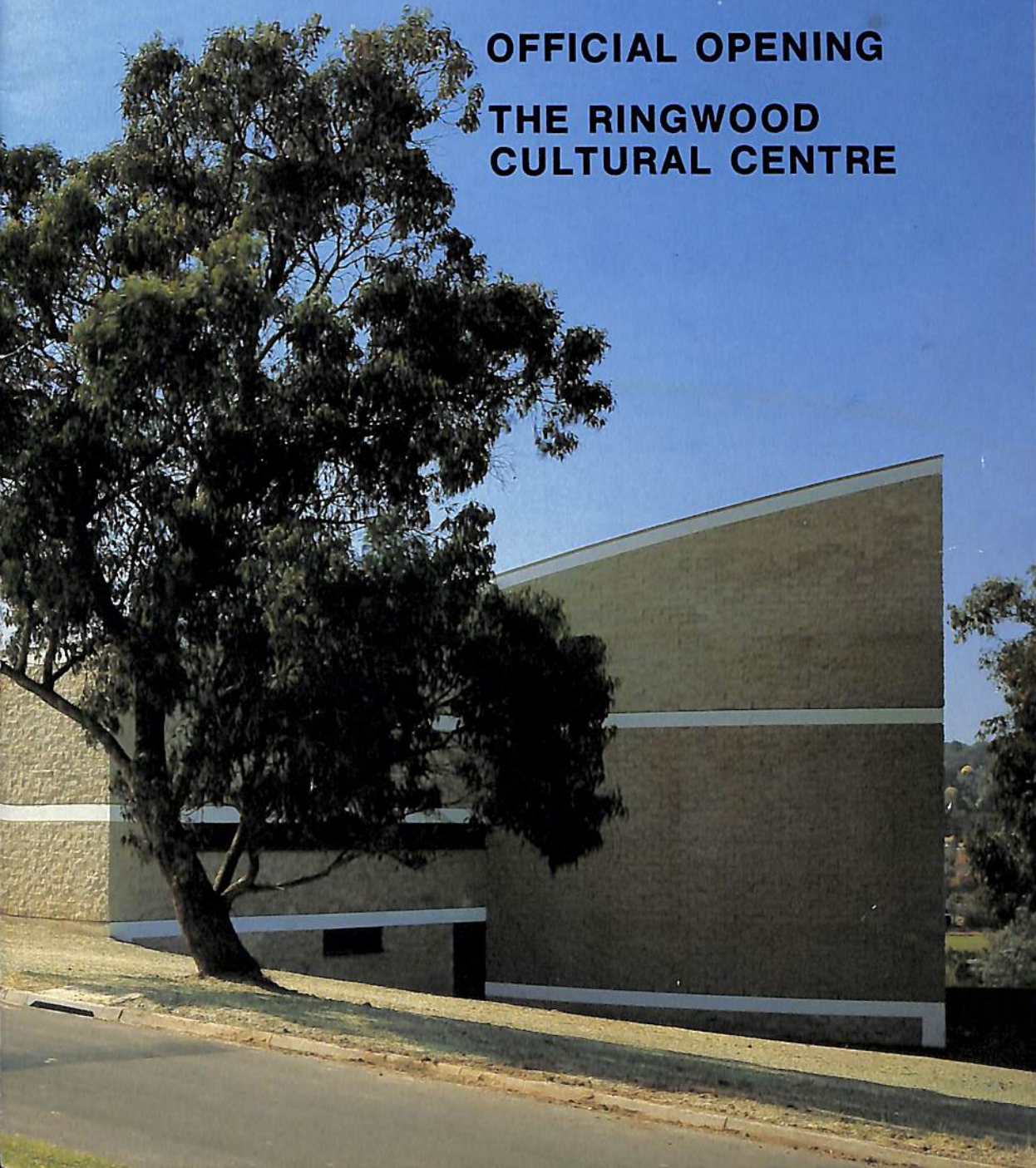




**CITY OF
RINGWOOD**

OFFICIAL OPENING

**THE RINGWOOD
CULTURAL CENTRE**





Today it is my pleasant duty on behalf of Council to welcome you to the Ringwood Cultural Centre, which as many of you are aware, has previously been known as the Ringwood Civic Centre Development, Stage 2.

The site upon which the Civic Centre and Cultural Centre are now constructed was formerly an antimony mine reserve.

The permanent reservation of this land as a "Public Purposes (Civic Centre) Reserve" was made by order in Council on the 4th February, 1969.

Council's appointment as the Committee of Management of the Reserve, was notified in the Government Gazette of 19th March, 1969.

The Civic Centre, which was officially opened on 7th February, 1970, was positioned and orientated in such a way as to complement the future construction of a cultural and social centre, to serve the needs of the community. Successive Councils maintained a planned programme of funding and investigation for this second stage of development.

The completion of the Ringwood Cultural Centre is the culmination of the hopes and aspirations of not only those closely associated with its construction, but also those past councillors, officers and citizens of Ringwood whose foresight helped to make this achievement possible.

It has been a cause of great satisfaction to Council that this building has become a reality without incurring substantial financial obligations. This has also been achieved without subsidy from the State and Federal Governments.

Council welcomes you to this fine new building and invites you to make use of the facilities, which hopefully will adequately serve the residents of the region in future years.

Cr. P. Gotlib J.P.
Mayor.



Official Opening

The Ringwood
Cultural Centre

by

His Excellency,
The Honourable **SIR HENRY WINNEKE**,
K.C.M.G., K.C.V.O., O.B.E., K.St.J., Q.C.

GOVERNOR OF VICTORIA

Saturday 19th April 1980



OLD TOWN HALL

INTRODUCTION

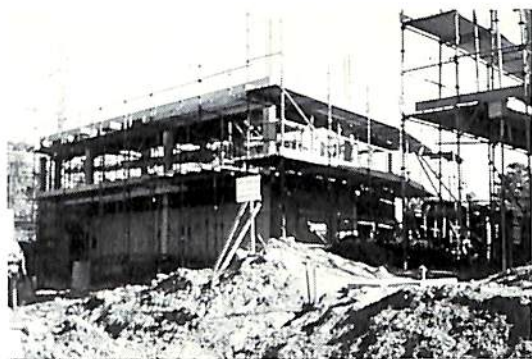
Historically Ringwood has always been at the centre of growth and development in Melbourne's eastern region.

The City has played a unique role in promoting commerce and industry to the great benefit of its own residents and persons residing within the Lilydale Corridor. (Nunawading — Healesville).

It has become abundantly clear that there exists a great cultural and social need both locally and regionally and the Council believes it is again placed in a situation where, by its own action, it can make a very significant contribution towards satisfying that need.



PRESENT CIVIC CENTRE



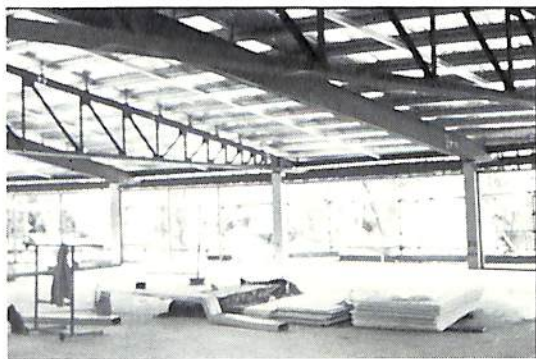
RINGWOOD CULTURAL CENTRE

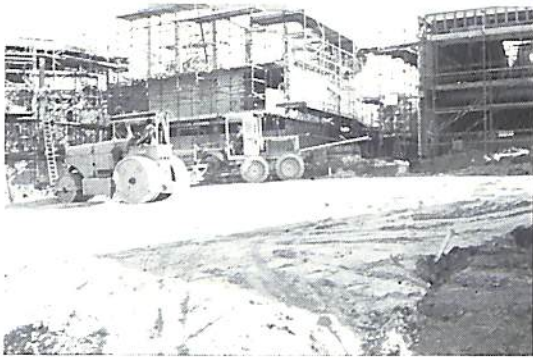
BACKGROUND

The decision by the City of Ringwood Council to undertake this project was formulated over a considerable number of years, during which time many factors were examined and evaluated.

An extensive study in 1973 by Urban Systems Corporation Pty. Ltd., (Clark Gazzard) at the request of Council, confirmed the concept of Ringwood as the strategic centre of commerce and culture in the Lilydale Corridor. Although the main thrust of that study was aimed at assessing the commercial trends of the region, the report commented strongly on the need for cultural and social facilities.

Consequently the Ringwood Council decided in the early part of 1974, to proceed with the selection of an architect to plan the second stage of the Civic Centre development. The Council envisaged that the first phase of the second stage would be the provision of an intimate theatre which the community survey had shown was a pressing need.



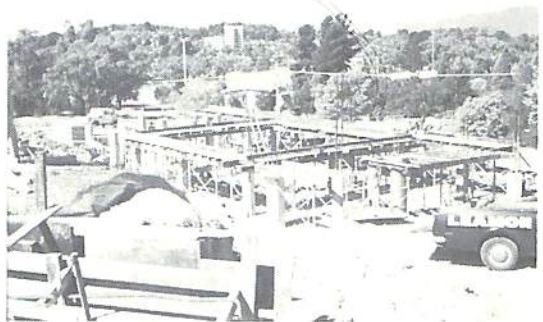


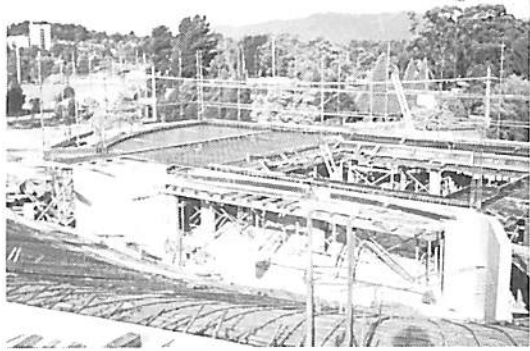
In April 1974 the Federal Government announced a proposal for a Commonwealth Centre to be built in Ringwood to accommodate approximately 3000 Commonwealth public servants. The proposed centre would be designed to integrate the total Ringwood Centre and include the substantial provision of community facilities, including an intimate theatre at no cost to the Ringwood Council. It is now a matter of history that this complex did not materialise and a change of government occurred in December 1975.

In February 1977 Council commissioned Civil & Civic Pty. Limited to undertake an in depth study of the area in order to confirm and if possible quantify the need for an intimate live theatre and functions room. The survey confirmed that there was in fact a vital need for the facilities described — particularly relating to the functions room.

APPOINTMENT OF PROJECT MANAGEMENT CONSULTANT

The Council decided after careful consideration that the construction of stage 2 of the Civic Centre should proceed on a project management basis.





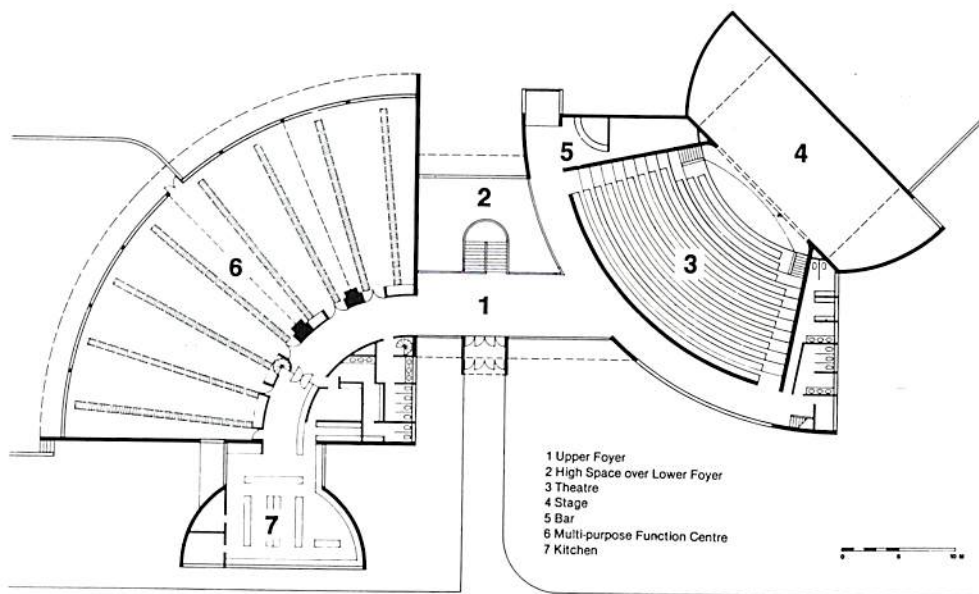
The Council was convinced that such a basis was the most appropriate method of providing a community facility within stated limits of budget, time and quality.

Project managers were invited to register their interest based on a preliminary brief. Submissions were received from eighteen consultants, seven of whom were interviewed by the Civic Centre committee.

The Council decided that the project manager for the complex would be Civil & Civic Pty. Limited, who had clearly demonstrated that they would provide the necessary management expertise. Harry Seidler and Associates were approved as their nominated architects. This team had an impressive record of past performance.

An agreement between the City of Ringwood and Civil & Civic Pty. Limited was executed on 11th December 1978 with a target sum of \$2,577,000—necessary works to be completed over 52 working weeks. The target sum was subsequently adjusted by agreement to include approved variations and additions. The works were completed on target for the total sum of \$2,714,447 and is regarded as an extremely successful project.





THEATRE

Tiered seating for 435 persons.
 Orchestra pit 26 players.
 Dressing room facilities 40 performers.

FUNCTION ROOMS

Public meetings — 770 persons.
 Cabarets — 500 persons.
 Banquets — 550 persons.

CARPARK

Vehicles 240.

METHOD OF FUNDING

Sale of Town Hall — Reserve Fund		\$380,000
Various Reserve Accounts		250,000
Grants Commission Allocation		
1976/77	90,000	
1977/78	275,000	
1978/79	295,000	
1979/80	350,000	
	<hr/>	1,010,000
Loan Funds 1977 to 1980		1,100,000
		<hr/>
		\$2,740,000

SCULPTURE — CASSINI. Created by sculptor Charles O. Perry of Norwalk, Connecticut, U.S.A.

CIVIL & CIVIC PTY. LIMITED **PROJECT MANAGERS**

Civil & Civic Pty. Limited was formed in 1951 as a construction company in the Snowy Mountains area of New South Wales. In 1962 Lend Lease Corporation was created with Civil & Civic being the design and construction division. Civil & Civic is a wholly owned subsidiary of Lend Lease Corporation.

In the 29 years of its existence, Civil & Civic's specialised professional services have been diversified so successfully, that construction is now only part of its activities.

The company early recognised the need for a complete integration of research, planning, design and construction disciplines and followed a planned recruitment and training programme for architects, engineers, quantity surveyors, cost planners and research experts.

Civil & Civic now offers "Total Responsibility and Single Accountability" for all details of every project from feasibility studies to commissioning of a building.

Civil & Civic's total work volume to date has exceeded \$1,400 million, with over 1200 commissions completed. With such a record the company claims it has met the challenge to work better, faster and more economically than its competitors because of its range of professional services, unequalled in Australia.

HARRY SEIDLER AND ASSOCIATES **ARCHITECTS AND PLANNERS**

The office of Harry Seidler and Associates has been in practice for over 25 years. It has completed a number of major building projects which have earned for it an international reputation unique in this country. It has received every major award — some several times. Their principal has been honoured in Australia (as well as overseas) by academic institutions and professional bodies. The work from the office is frequently illustrated in books on architecture and also in international architectural periodicals published all over the world.

Harry Seidler and Associates have been responsible for the design of some of Sydney's best known buildings amongst them Blues Point Tower, the unique Australia Square Project, The M.L.C. Centre and many other apartment and housing complexes as well as commercial and industrial buildings. They are architects for large buildings and complexes for the Commonwealth Government — such as The Trade Group offices in Canberra. The office has produced building designs in the U.S.A., Mexico and recently the new Australia Embassy in Paris.

Harry Seidler was born in Vienna 1923. After studies in England he graduated in architecture from

the University of Manitoba, Canada. Later he did post-graduate work at Harvard University under professor Walter Gropius and worked in the office of Marcel Breuer in New York.

After a period working with Oscar Neimeyer in Rio-De-Janiero he settled in Australia in 1948.

During the first few years of practice he often came into conflict with local councils who objected to his uncompromising modern house designs — for some of which he later received architectural awards.

Harry Seidler was awarded the O.B.E. in 1972.

TOM BROWN & ASSOCIATES PTY. LIMITED **THEATRE CONSULTANTS**

BACKGROUND

1950-1976 Europe, South Africa, Canada, U.S.A., New Zealand, Australia.

U.K. Metropolitan Ballet Company, Young Vic Company, Old Vic Company, Canada, U.S.A. Stratford Festival Ontario, Film Production Co-ordinator, Assistant Tyrone Guthrie, Broadway Tamburlaine, Candide, Australian Opera Company, Old Tote Theatre, New Zealand Opera Company.

Director, National Institute of Dramatic Art, Australia, 1961-68 Co-Founder, Director, Old Tote Theatre Australia 1962.

Member, Association of British Theatre Technicians. Member, Association of Australian Theatre Technicians.

Member Special Projects Committee, Australia Council for the Arts, 1974 member, Theatre Board, The Australian Council 1976.

Fields of Specialisation

Feasibility Studies, Client's and Architect's Brief, Theatre Design, Dual Purpose Halls and Adaptable Spaces, Administration, Stage Planning and Equipment, Production Facilities, Community Centres.

EXPERIENCE AS A THEATRE CONSULTANT (ABRIDGED)

Adelaide Festival Theatre Centre —
4 Theatres, Production Workshops, 1974.
Theatre Royal, Sydney, 1975.

Victorian Arts Centre, Victoria,
3 Theatres and Concert Hall
(Under Construction)

Queensland Cultural Centre
Performing Arts Complex,
Brisbane — 3 Theatres

THE RINGWOOD ARTS FESTIVAL — 1980

TO BE PRESENTED IN THE RINGWOOD CULTURAL CENTRE
KARRALIKA THEATRE

SATURDAY, 19th APRIL

Victoria State Opera Stars in concert.
"Highlights from Opera" featuring Suzanne Steele.

SUNDAY, 20th APRIL

Beverley Dunn presenting "As We Are".

MONDAY, 21st APRIL

Frank Traynor and the Jazz Preachers
"History of Jazz". Vocalist Lenore Somerset

TUESDAY, 22nd APRIL

The Hawking Brothers

WEDNESDAY, 23rd APRIL

Australian Contemporary Dance Company.

THURSDAY, 24th APRIL

The Cobbers. "A Night with the Cobbers
Bush Band — Australiana".

FRIDAY, 25th APRIL

(Anzac Day)

The Anzac Camp Show. The Black Prince and Dugout Orchestra plus
vocalists, Dorothy Baker, Irene Hewitt, Alan Stone, etc. — plus the Gold
Diggers (Dancers).

SATURDAY, 26th APRIL

Maroondah Theatre Company.
"Merchant of Venice" by William Shakespeare.

SUNDAY, 27th APRIL

Matinee — Pantomime. Zig and Zag, plus Humphrey B. Bear.



COUNCILLORS

Mayor Cr P. Gotlib J.P.

NORTH WARD

- * Cr. A. B. Henderson J.P.
- Cr. D. M. Richards
- Cr. N. J. Hamilton

SOUTH WARD

- * Cr. J. M. McRae
- * Cr. G. R. G. Smart J.P.
- * Cr. P. Gotlib J.P.

EAST WARD

- * Cr. B. L. Lawrenson J.P.
- Cr. F. J. Corr
- Cr. W. R. Wilkins

* Has served as Mayor

TOWN CLERK

A. W. Hall, A.A.S.A., F.I.M.A.

CITY ENGINEER

A. C. Robertson, C.E.,
F.I.E. (Aust.), B.T. & R.P.

CIVIC CENTRE COMMITTEE

- Cr. J. M. McRae (Chairman)
- Cr. A. B. Henderson J.P.
- Cr. F. J. Corr
- Cr. B. L. Lawrenson J.P.

Town Clerk — A. W. Hall

City Engineer — A. C. Robertson

CONSULTANTS

Project managers:

Architects:

Theatre consultants:

Acoustic consultants:

Structural engineers:

Mechanical engineers:

Electrical engineers:

Hydraulic engineers:

Civil & Landscape:

- Civil & Civic Pty. Limited
- Harry Seidler & Associates
- Tom Brown & Associates
- Peter Knowland & Associates
- W. L. Meinhardt & Partners
- Environ Mechanical Services
- R. M. Norton & Associates
- Ledingham, Hensby & Oxley Pty. Ltd.
- Scott & Furphy Engineers.

