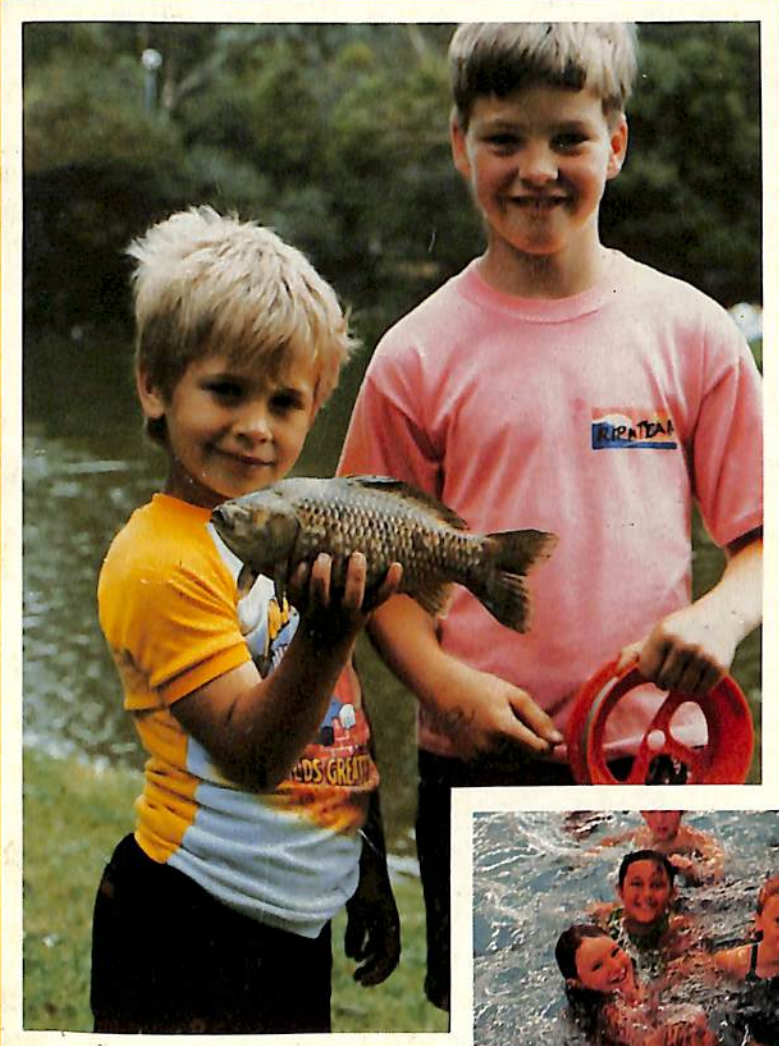




CITY OF RINGWOOD



1990



COMMUNITY GUIDE

Contents COUNCIL SERVICES

After School Programme	33	Home Handyman Services	54
Aged Services	33, 34, 35	Home Help	33
Aquatic Centre	15, 16, 17	Immunisation	25
Aquatic Centre Bonus Vouchers	17	Incinerators	29
Biological Wasp Control	24	Knaith Road Child Care Centre	32
Budget	13, 14	Library	22
Building Information	26	Library Service Senior Citizens	34
By-Laws	29	Maternal and Child Health	31
Chief Executive's Message	9	Mayoral Message	3
Children's Services	9	Meals on Wheels	33
Citizenship	44	Members of Parliament	40
Civic Centre	4	Parks and Gardens	22, 23
Committees of Council	5	Rates	28
Common Questions	39	Residential Development Provisions	12
Council Meeting Dates	4	Ringwood Bypass Road	11
Council Representatives	8	Ringwood Convention Centre and Performing Arts Centre	20
Councillors	6, 7	Ringwood District Centre	13
Dogs	29	Ringwood Festival	21
Emergency Telephone Numbers	67	Shopping Bus	34
Family Day Care	32	Staff	10
Fire Hazards	29	Town Planning	26
Garbage	37	Works Depot	36
Golf Course	19	Youth Outreach Worker	36
Health and Environmental Services	24		

LOCAL COMMUNITY SERVICES

Accommodation	42	Legal	56
Aged Accommodation	42	Literacy	56
Alcoholism	42	Lone Parents	57
Arthritis Foundation	43	Marriage Celebrants	57
Arts and Crafts	43	Maroondah Social Health Centre	57
Blind	43	Neighbourhood Mediation Centre - Outer East	57
Care Force	43	North Ringwood Community House	58
Catholic Family Welfare Bureau	43	Nursing	59
Central Ringwood Community Centre	43	Optometric Services	59
Childbirth and Parenting Association	44	Playgroups	60
Churches	45	Pre-Schools	60
Community Services Victoria	47	Red Cross	61
Day Centres and Drop In Centres	48	Retirement	62
Disabled Facilities	49	Ringwood Croydon Advisory Service	62
Do Care	50	Schools	63
Drugs	50	Senior Citizens' Centres	65
Elderly Day Care	50	Transport	66
Emergency Housing	51	Twins	66
Family Planning Services	51	Unemployment	66
Financial Counselling	52	Volunteering	66
Hearing Aid Service	53	Youth Accommodation Project (Maroondah)	67
Hospitals	54	Youth Emergency Services	67
Housing	54		
Information	55		

MAYORAL MESSAGE

The City of Ringwood is a vital and progressive place in which to live, and this is in no small way due to the community spirit that exists amongst the residents.

The services and facilities available in Ringwood are detailed in this 1990 Community Guide. Many local organisations are also listed. Services such as Meals on Wheels and the shopping bus for the elderly could not be provided without the assistance of many volunteers who give of their time freely and cheerfully on a regular basis. This contribution to the community is very much appreciated and if you would like to be involved in this way, please telephone the Civic Centre.

Discussions on the proposed Ringwood Bypass have been very much to the fore during 1989 and will continue to be the major issue facing Council and the community in 1990. There is no doubt that with increasing residential development in the eastern corridor, an alternative route is urgently needed through Ringwood. Our local roads are being used by large numbers of motorists in order to escape the crush of traffic on Maroondah Highway, and the resulting risk to safety of residents cannot continue to be tolerated. If the Bypass goes ahead and is routed through the Mullum Valley, as many trees as possible will be retained and furthermore, large areas of land on either side of the route will become available as public open space.

Ringwood people will experience change within their City during the next decade as long-term plans for the District Centre are implemented. The development will create an exciting focus for Ringwood and will provide additional facilities in an attractive environment.

I look forward to the 1990s with much enthusiasm and trust that you will continue to provide constructive comment and suggestions as Council plans for the future. Councillors, whose names and phone numbers are listed in this booklet, will be happy to hear from you, and the staff at the Civic Centre will happily assist wherever possible.

With very best wishes to you all for a happy, healthy and safe 1990.

LILLIAN ROSEWARNE
Mayor



CIVIC CENTRE

The Civic Centre is located in Braeside Avenue, Ringwood, just near the Maroondah Highway (Map Reference L8).

Office Hours

- Monday - 8.30 a.m. to 8.00 p.m. (4.30 p.m. January and late December)
- Tuesday to Friday - 8.30 a.m. to 4.30 p.m.
- Building Department closed 12 noon to 5 p.m.

Telephone Inquiries are received on 870 4311

Fax No. 879 3534

Postal Address: Post Office Box 156, Ringwood, 3134

AUSDOC: DX 38068, Ringwood

COUNCIL MEETING DATES

Council, comprising the nine elected representatives (Councillors), forms the decision-making body of the municipality. At a Council Meeting, consideration is given to numerous items and a decision is reached on each of them. These items may take the form of requests for financial assistance, applications for planning permits or simply an invitation extended to Councillors to attend a community event.

Council Meetings commence at 7.45 p.m and are held on Monday. The meetings are open to the public.

February	12th
March	(Tuesday) 13th
April	9
May	7
June	4
July	2
July	30
August	27
September	24
October	22
November	19
December	17

COMMITTEES OF COUNCIL

There are three Committees which deal with matters in greater depth than is possible in a Council Meeting. Each Committee deals with different areas of Council business and unless the Committee has delegated power, makes recommendations to the full Council Meetings. The recommendations from these Committees may be adopted, amended or totally rejected. The Committees, their jurisdiction and the Councillors appointed to them, are:-

I Physical Resources Committee

Councillors:

Staff, Building and Planning

L. Dineen (Chairman)

M. Nardella

B. Milton

M. Cheevers

F. Corr

II Community Services Committee

Councillors:

Finance, Health, Legislative, Traffic, Lighting and Properties, Community Support Services, Parks and Gardens

M. Williams (Chairman)

L. Rosewarne

A. Fraser

N. MacDonald

III Policy and Resources Committee

Councillors:

All policy and matters which may have wider ramifications than the other Committees

L. Rosewarne (Chairman)

All other 8 Councillors

The Committee cycle over a four-week period is:-

FIRST WEEK	-	Physical Resources Committee
		Community Services Committee
SECOND WEEK	-	Policy and Resources Committee
THIRD WEEK	-	Council Meeting
FOURTH WEEK	-	Special Meetings etc.

All discussions are open to the public unless matters are deemed by the Committee to be confidential. Contact the Civic Centre on 870 4311 to obtain further information regarding dates and times of meetings.

COUNCILLORS

The municipality is divided into THREE WARDS - NORTH, SOUTH and EAST. Three Councillors represent each ward and the boundaries of the wards are depicted on the map of the municipality (circulated with the Guide)

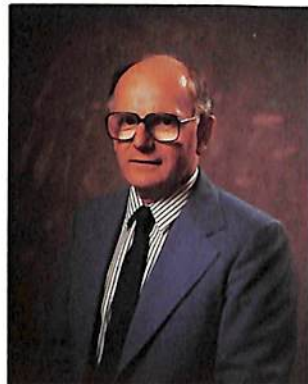


NORTH WARD

L to R
Anne Fraser
Betty Milton
Neil MacDonald

SOUTH WARD

L to R
Leo Dineen
Michael Nardella
Max Williams



EAST WARD

L to R
Frank Corr
Lillian Rosewarne
Margaret Cheevers

NORTH WARD

Cr. A Fraser
21 Heatherbrae Avenue, Ringwood 3134
Cr. B. Milton
3 Graeme Avenue, North Ringwood 3134
Cr. N. MacDonald
3 Reserve Road, Ringwood 3134

SOUTH WARD

Cr. L. Dineen
14 Allens Road, Heathmont 3135
Cr. M. Nardella
177 Bedford Road, Heathmont 3135
Cr. M. Williams
86 Maidstone Street, Ringwood 3134

EAST WARD

Cr. F. Corr
89-91 Wonga Road, North Ringwood 3134
Cr. L. Rosewarne
3 Bellbird Court, Ringwood 3134
Cr. M. Cheevers
3 Vista Court, East Ringwood 3135

	Telephone	Retires
Cr. A Fraser	870 4203	1990
Cr. B. Milton	870 4531	1991
Cr. N. MacDonald	870 8467	1992
Cr. L. Dineen	729 0564	1990
Cr. M. Nardella	870 4852	1991
Cr. M. Williams	870 0358	1992
Cr. F. Corr	876 2084	1990
Cr. L. Rosewarne	870 3390	1991
Cr. M. Cheevers	870 4784	1992

COUNCIL REPRESENTATIVES 1989/90

Councillors in addition to their normal Council duties also actively participate in community organisations. A small cross-section of organisations and Council associated activities :-

A. G. Lavis Pavillion Committee of Management
Cr. Dineen

Blue Light Disco Committee
Cr. Fraser

City of Ringwood Band
Cr. Nardella

Frail Aged Committee of "Lionsbrae"
Cr. Corr

North Ringwood Community Centre
Cr. Fraser

Recycling Committee
Cr. MacDonald

Ringwood Chamber of Commerce
Cr. Nardella (substitute Cr. Cheevers)

City of Ringwood Highland Pipe Band
Cr. MacDonald

Ringwood Historical Research Group
Cr. Corr

Senior Citizens Consultative Committee
Crs. Cheevers, Dineen and Milton

H. E. Parker Reserve Pavillion Committee of Management
Cr. Dineen

Aquatic Centre Sub-Committee
Crs. Corr, Milton, Rosewarne & Williams

Knaith Road Child Care Centre Management Committee
Cr. Rosewarne

Eastern Volunteer Resource Centre Inc.
Cr. Milton

Maroondah Social and Community Health Centre
Cr. Cheevers

Outer Eastern Municipalities Association
Cr. Rosewarne

Ringwood Community Garden Co-operative
Cr. MacDonald

Ringwood High School Council
Cr. Williams

Ringwood Festival Organising Committee
Cr. Nardella

Ringwood Youth Centre Management Committee
Cr. Fraser

Youth Accommodation Project (Maroondah)
Cr. Williams

RINGWOOD - POISED FOR THE NINETIES

1990 and the ensuing few years will see substantial change in the Ringwood community.

The Bypass and District Centre are both held up pending the recommendation of the independent panel reviewing options for traffic movement through and within the commercial centre of Ringwood.

With a decision on the Bypass imminent, the District Centre can proceed. Council is keen to have the formal town planning processes associated with the development on public exhibition early in 1990. The proposals will build upon the concepts previously advertised, with emphasis on enhancing the existing facilities and introducing substantial employment opportunities in retail and office developments.

During 1990, Council will be reviewing its long term vision for the city. It will identify issues such as service quality, the need to balance the development of Ringwood with its special features, and the role of the Council as a representative of, and for, the community in its contact with the State and Federal Governments.

As the general population ages, so too does the Ringwood community. To the year 2001, there will be decreases in the number of those in the 0 - 39 year age group, and significant increases in those aged 40 - 75. It is estimated that those aged 60 years and over will increase by nearly 50% in the fifteen years from 1986 to 2001. Council and State and Federal Governments have recognised the need to plan for the provision of facilities and services to match the needs of the aged in the community.

Many members of the community have found that by involving themselves in the activities which surround them, they are able to contribute substantially to enhancing the quality of life of those they assist and, by doing this, gain fulfilment and satisfaction. It is a challenge to all members of our community to participate in activities outside their own homes and businesses. The involvement can be relatively simple, or quite intense; however, it is not so much the level of the involvement, but rather the commitment to enhancing the quality of life of the community, that is important. Council's Community Services staff or the Eastern Volunteers Resource Centre (Tel: 870 4311 or 870 7822) are keen to hear from those interested in seeing what opportunities exist.

The 1990s provide a challenge to us all. The Council's major challenges will be to effectively resolve those traffic issues that are creating so much difficulty for the District Centre and residents generally, to appropriately plan and develop the District Centre as a major regional commercial and retail facility, and to maintain, as much as is possible, the unique residential environment that makes Ringwood something special.

The Council looks forward to community support as it faces these major opportunities for the 1990s.

JOHN PAECH
Chief Executive.

COUNCIL STAFF

Corporate Management: Ringwood has adopted a corporate approach for the management of the City. Heading the management team is the Chief Executive, John Paech, who is responsible to the Council for the running of our City.



Left to Right: John Paech (Chief Executive), Neil Arbuthnot (Director Planning and Development), Graham Hayden (Group Manager, Engineering Services), Gordon McCulloch (Director Finance), and Bill Black (Director Corporate Services).

There are four divisions each headed by a Director or Group Manager who is also a member of the management team.

Planning and Development:

Neil Arbuthnot, Director Planning and Development.
Planning and Development Division encompasses:
Building, Town Planning and Engineering Services.

Corporate Services:

Bill Black, Director Corporate Services.

Corporate Services Division encompasses:
Administration, Community Services, Health, Library Services, Civic and Ceremonial, and Traffic and By-laws functions.

Finance:

Gordon McCulloch, Director Finance.

Finance Division encompasses:
Accounting, Convention Centre, Information Systems, Rates and Valuations.

Engineering Services:

Graham Hayden, Group Manager Engineering Services Group.

Engineering Services encompasses:
Aquatic Centre, Design Office, Parks and Gardens, Traffic Engineering and Works.

Should you ever have any queries regarding the areas listed above please call the Council on 870 4311 and ask for the appropriate department.

RINGWOOD BYPASS

Early in 1989 the Minister for Planning and Environment, after establishing an independent Panel to hear submissions and make recommendations on amendments to the Planning Scheme and the Environmental Effects Statements for the Ringwood Bypass, gazetted the northern (Munro Street) route as the alignment for the construction of the Ringwood Bypass, following which the Minister for Transport announced that construction of the Bypass would commence in 1990.

It was thought that these announcements had put an end to the uncertainty and future of the Bypass and for those property owners who would be affected by its construction. However, midway through 1989 the Minister for Conservation, Forests and Lands and the local Member for Ringwood, Mrs. Kay Setches, announced that a further flora and fauna study would be undertaken along Mullum Mullum Creek and Koonung Creek valleys,

In August, following on from the announcement by the Minister for Conservation, Forests and Lands, the Minister for Transport, the Hon. Jim Kennan, announced the appointment of a Review Panel to examine and assess the measures to deal with the current and projected traffic requirements of the Eastern Corridor. Once more the Ringwood Bypass is to be reviewed.

The Panel appointed by the Minister released a paper in December 1989 entitled "Issues for Review". Public hearings for the Review commenced on 22 January 1990.

The indecision and uncertainty surrounding the future of the Ringwood Bypass is again with the community. Council's view has been, and continues to be, that it supports the alignment currently shown on the Planning Scheme.

Council believes that this important issue must be finally resolved and work commenced on the construction of the Ringwood Bypass immediately to reduce the current delays and congestion within the commercial centre of Ringwood and to improve the amenity along residential streets which are currently being used to bypass Ringwood.

Council expects the Review Panel to make its recommendations to the Minister for Transport in the second quarter of 1990. Following the recommendations being made to the Minister, Council will continue to press the Government for a commitment to have construction of the road commence immediately.

RESIDENTIAL DEVELOPMENT

In November 1985 the State Government introduced the concept of dual occupancy to apply across the State. This allows the construction of a second house on a block of land (where all the guidelines are met). Ringwood ranks as one of the highest dual occupancy approval areas since the introduction of the concept. In 1989, of the 212 new dwellings constructed, 125 were dual occupancies - this represents 60% of total new dwellings constructed within the municipality.

In the latter part of 1987 the State Government released the draft Residential Development Provisions for Victoria for public comment.

Following consultation, the Minister for Planning and Environment has introduced guidelines covering the Residential Development Provisions for a trial period of two years.

As a result of the dual occupancy and residential development provision initiatives of the State Government and the need to review Council's current policies in relation to residential development within the municipality, Council will be reviewing its residential development policies in the first quarter of 1990 and will develop a comprehensive policy having regard to the changing nature of housing requirements.

The objective of the new policy is to reflect current attitudes and support for the retention of the natural beauty of the treed landscape of Ringwood. All current policies, statutes and Government guidelines will be reviewed and the opportunity will be given for community consultation to take place to ensure that the final policy reflects the broad community view, including identification of areas that may require restriction from further development.

RINGWOOD DISTRICT CENTRE

The uncertainty created as a result of the recent decision of the Government relating to the Ringwood Bypass has impacted upon the development of the Ringwood District Centre. Council had planned to place the Ringwood District Centre Planning Scheme Amendment on statutory exhibition late in 1989 and worked towards achieving that objective. However, following the announcement of the Minister for Transport to appoint a Panel to review the Ringwood Bypass, the planning for the District Centre has been brought to a halt.

The Planning Scheme alignment for the Ringwood Bypass forms the northern boundary of the District Centre. Any alteration to this alignment will have an impact upon the strategies for the development of the District Centre. As a result, Council does not expect to place the Planning Scheme Amendment on statutory exhibition for public comment until later this year.

As a result of the advanced preparation of the Planning Scheme Amendment and advice received, Council has requested the Minister for Planning and Environment to act as the responsible Authority for the preparation and exhibition of the Amendment.

Council continues to work closely with the Ministry for Planning and Environment and the Ministry of Transport to ensure that the future development of Ringwood provides the greatest benefit to the community.

Council looks forward to receipt of submissions on the Amendment following its exhibition.

BUDGET

Council's 1989/90 Budget provides for expenditure totalling \$23,530,000, an increase of 12.7% on the 1988/89 Budget. This sum includes the raising of \$600,000 or new loan funds for capital works.

To meet the cost of extraordinary expenditure not available from Rate Revenue, Council has drawn upon reserve funds set aside in past years to meet large items of expenditure which cannot be financed within one financial year. In this respect, extra funds are being withdrawn from these reserves to purchase mechanical plant and equipment, to partly refurbish the Cultural and Convention Centre, and for major improvements at the Golf Course and Aquatic Centre.

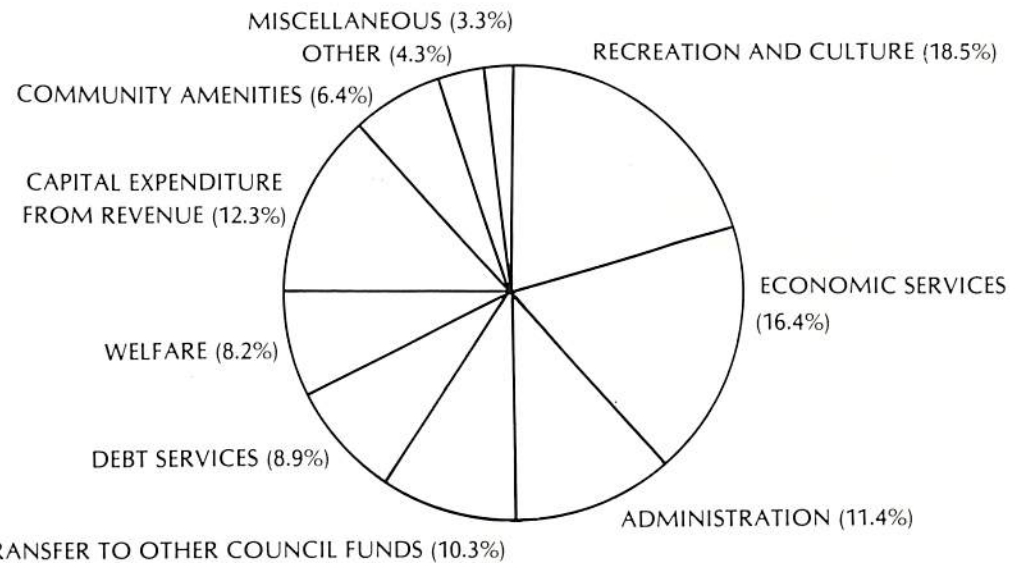
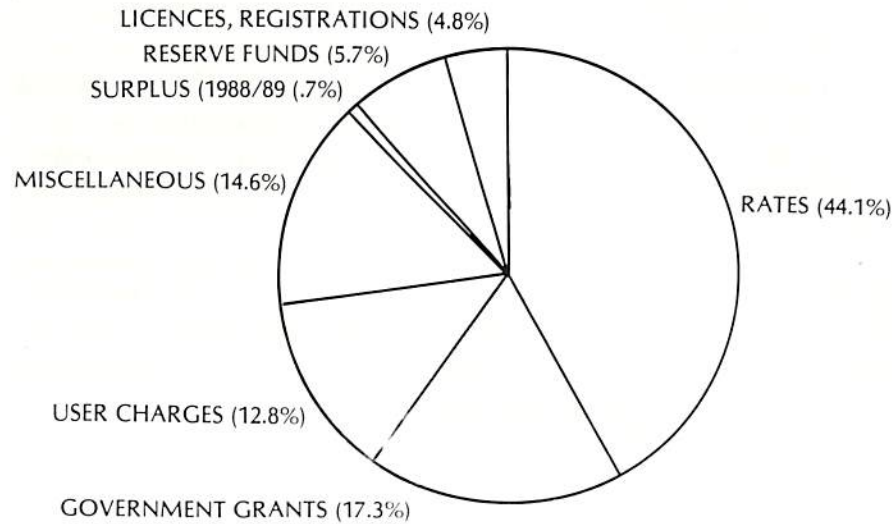
Other major works proposed to be funded from loans are:-

Roadworks including Council's contribution to Roads Corporation allocations - \$281,000; Council's contribution to Lionsbrae - \$50,000; Council contribution to Croydon/Ringwood Nursing Home - \$100,000; Local Area Traffic Management

Budget continued

Schemes - \$47,500; and District Centre Projects - \$100,000.

Council's 1989/90 Budget is shown diagrammatically in the following charts:-



RINGWOOD AQUATIC CENTRE



Family fun at the Aquatic Centre.

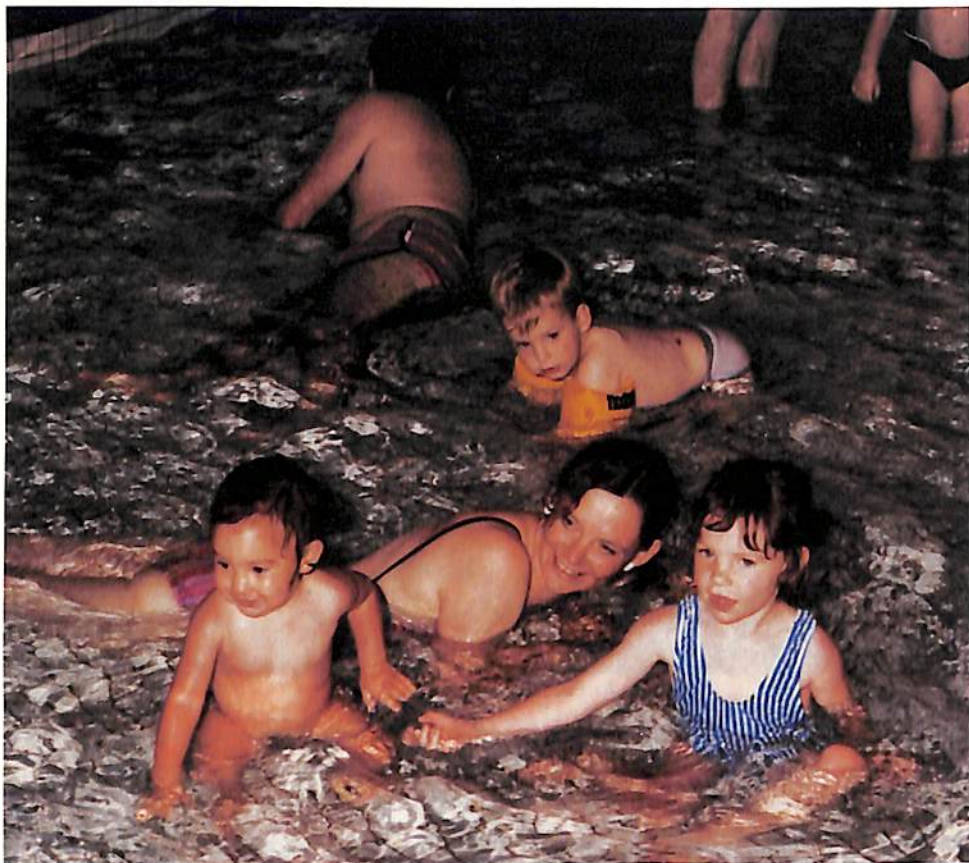
Another successful year has passed with more than half a million patrons using our excellent facilities at the Ringwood Aquatic Centre. This high level of patronage has continued despite the opening of two other centres in adjoining municipalities.

The Aquatic Centre activities range from learning to swim, to squad training for the more competitive. Other programmes such as Water Aerobics, Fabulous Fifties Group, Bronze Medallion classes, Water Polo, Springboard Diving, Scuba Diving, Synchronised Swimming and Triathlon clubs, have regular training time slots for their use. Spa and sauna facilities are available for those who just want to relax.

Some 81,000 students from within and outside Ringwood had swimming lessons, with the Centre staff assisting with instruction.

During the winter months, the outside toddlers' pool floor was retiled to make it safer for users. Also work has been carried out on the indoor pool's filtration plant, including the replacement of the lint screen basket and the installation of a more cost-effective pump and motor.

Other modifications to the Centre will include a small office to accommodate the Swimming Lesson Co-ordinators. This will help them to cope with the increase in school and our own lessons. Improvements will also be made to improve the service of the showers in the change-rooms.



The Aquatic Centre was one of a very few swimming centres throughout Victoria given the opportunity to have complete charge of the Vic-Swim Learn to Swim and Water Safety Campaign during January 1990. This was a very rewarding and challenging exercise for those involved.

A full list of fees and charges is available from the Aquatic Centre, or telephone the Centre for information on any of the available programmes on 870 0519 or 879 5319 during pool opening hours.

Council would like everyone to enjoy the Aquatic Centre so here are some vouchers for you and your family to use.

For every paid adult entry to the Aquatic Centre, presentation of a voucher will entitle you to one free entry, or two children free entry. This offer expires 30 June 1990 - so cut these vouchers out and enjoy **your** Aquatic Centre.



The Toddlers Pool, great for littlies.



**BONUS
ENTRY
VOUCHER**

ONE FREE ENTRY
with one paid entry

VALID TO JUNE 30th, 1990
One full adult entry or two
children with each adult entry.



**BONUS
ENTRY
VOUCHER**

ONE FREE ENTRY
with one paid entry

VALID TO JUNE 30th, 1990
One full adult entry or two
children with each adult entry.



**BONUS
ENTRY
VOUCHER**

ONE FREE ENTRY
with one paid entry

VALID TO JUNE 30th, 1990
One full adult entry or two
children with each adult entry.



**BONUS
ENTRY
VOUCHER**

ONE FREE ENTRY
with one paid entry

VALID TO JUNE 30th, 1990
One full adult entry or two
children with each adult entry.



GOLF COURSE

The Ringwood Golf Course is situated in Canterbury Road just west of Wantirna Road. It is one of the most popular public courses in the metropolitan district and sells approximately 100,000 games annually.

The course is maintained by six permanent Council outdoor staff members under the direction of the curator, Mark Schmutter. Their dedication and professional work to improve the drainage and the quality of the greens has meant that the course was only closed for eight days in the extremely wet 1989 season.

The course professional, Mr. Peter Harvey, has a full range of golfing equipment at the Pro-Shop and is available for private and group tuition. He can be contacted on 870 7496.

The green fees are amongst the cheapest in Melbourne, with only \$8.00 for an adult 18-hole round. Concession fees for juniors and pensioners are available mid-week only. Booking times for the 1st and 10th tees can be made at the Pro-Shop for weekend and public holidays only, provided fees are paid in advance. For inquiries please ring 870 7496.

The Ringwood Golf Club will again stage the Pro Am tournament in February 1990.

Improvements at the course for the 1989/90 year will include redevelopment of the 8th hole, improvement to tees and also additional tree planting.



Peter Harvey instructing a young player.

THE RINGWOOD CONVENTION AND PERFORMING ARTS CENTRE

Since being established in 1980, the Ringwood Convention and Performing Arts Centre has become a regular venue for local groups of people as well as attracting groups from outside Ringwood. The Centre is next to the Civic Centre, surrounded by seven acres of beautiful lawns and bushland.

The building has function rooms and the Karralika Theatre. The Centre's design makes it extremely versatile in usage. The three main function rooms can cater from 50 people to 750 people. The Centre is run to a very high standard and is one of only a few Council-owned Centres to provide its own in-house catering services.

It is a popular choice for wedding receptions and a vast array of meetings including conventions, debutante balls, school functions, Council, political and government meetings, dinner dances, sports nights, presentations, product launches, quests, pageants, fund-raising functions, trade displays, antique and garden shows, 21st birthdays, anniversaries and retirement dinners.



The perfect setting for your perfect day.

The Karralika Theatre is one of the most modern and well-equipped outside central Melbourne. It seats 433 people and provides first-class entertainment and facilities at the most economical charges. The Karralika Bar is available for the convenience of clients and a fully stocked kiosk is available at all performances. Much of the theatre's use is by local community groups such as theatre companies, schools, ballet and callisthenics groups, local arts councils and musicians. In the school holidays it puts on programmes to cater for children and attract them to theatre.

Please remember that if you have an individual need or are part of a group or club who has a reason to hold functions, please contact the Centre management on 870 2888 or just call in.

RINGWOOD FESTIVAL

The Ringwood Festival is an Annual Festival which is being held in the last week of March and first week of April this year.

The Festival includes free theatre performances at the Convention Centre by local theatrical and musical companies, a talent quest, and acts by well-known actors, people who we all know from the stage and screen, as well as many talented Ringwood residents.

There is a display conducted at local shopping centres by various community groups, so come along and try a new activity, get involved in a new club, make friends.

And that's not all, art shows are held and this year the garden clubs will be putting on displays as well.

The Family Fun Day held at the Lake is always popular, with pony rides, clowns, face-painting, food, entertainment, and displays. You never know what you'll see next, but you can be sure it will be fun for all ages.

To make the Family Fun Day even more special this year the Ringwood Traders will be open the whole day to bring you extra-special displays and activities and help you celebrate 'Living in Ringwood - A Great Place!'

In the middle of all this activity, the Highland Carnival is held at Jubilee Park, with Highland music, sports, including tossing the caber, tracing your clan, finding out what your tartan is - even if you're not Celtic, you'll still enjoy the colour, vibrancy and different things to see and do at the Highland Carnival.

For more information on events call the Civic Centre on 870 4311

The dates for this year's events are:

Theatre performances	25 March - 1 April
Highland Carnival	1 April
Shopping Centre Displays	2 - 7 April
Family Fun Day	8 April

Mark these dates on your calendar and be there!



Face painting! A very popular activity at Family Fun Day.

RINGWOOD LIBRARY

Anyone can join the library and membership is free. Just complete an application form, produce identification of name and address and you're a member!

Members of the Ringwood Library may also borrow from any branch of Eastern Regional Libraries. Branches are located at Croydon, Knox, Boronia, Ferntree Gully, Sherbrooke, and Healesville. Mobile libraries operate in Healesville, Knox, Sherbrooke and Upper Yarra.

Location

28 Warrandyte Road, Ringwood
Telephone: 870 0177

Open

Monday to Friday: 11.00 a.m. - 9.00 p.m.
Saturday: 10.00 a.m. - 5.00 p.m.

You can borrow books, magazines, cassettes, jigsaw puzzles and videos. Special books and cassettes are available for print-handicapped people. A wide range of other services is available and it's all **free!** Want to know more? The staff at the library will be happy to help you.

PARKS AND GARDENS

Ringwood is only a small city but it contains over 102 Council provided and maintained parks, gardens and playgrounds.

Council recognises that our lovely tree-filled environment and spacious parks are a major asset to our city, and will continue to preserve and enhance our public open spaces so that they are even better for all to enjoy.

Whether your taste is in active or passive pursuits there is something offered for everyone. Fishing, horse-riding, basketball, football, soccer, cricket, athletics, golfing, netball, jogging, skateboarding, exercising, bike riding or just plain lazing about enjoying a barbecue or picnic with your family are just some of these.

The Parks Department is a small department of thirty staff who are very dedicated to maintaining the 220 hectares of parks at a high standard for all to enjoy. The Parks Department and Nursery are situated in Greenwood Avenue next to Jubilee Park.

The functions of the Department are:-

- Planting and maintenance of all floral and garden displays e.g. Maroondah Highway
 - Maintenance of sports ovals and turf wickets
 - Keeping playgrounds clean and safe for children
 - Landscape construction and sprinkler installation
 - Tree care and tree planting
 - Nursery - which produces all our plants and display plants
 - Mowing and maintenance of all our passive usage parks and bush parks.
-



Some works planned for 89/90 include:-

- Major playground developments.
 - Plant giveaway to the residents of Ringwood (to help tree Ringwood).
 - Installation of automatic watering systems at Quambee Reserve.
 - Upgrading of B.B.Q. area at Ringwood Lake.
-

Mandy Savage tending to plants at the Nursery

HEALTH AND ENVIRONMENTAL SERVICES

Council's Health Department promotes a highly successful preventative health care programme for the benefit of the public.

Food Standards

Council's Health Surveyors are responsible for controlling standards in premises used for the sale or manufacture of foods to ensure that these premises comply with regulation standards, are kept clean and food-handling methods are hygienic.

Samples of food and drink are bought for analysis to check that products meet the required standards. Food labels are also examined.

Inspection Services

As well as checking standards in food delivery vehicles, food shops, cafes, restaurants and factories, regular inspections are made of hairdressers, chiropodists, beauty parlours and ear-piercing establishments

Fire prevention, eating houses and accommodation standards in motels, hotels and boarding houses are inspected.

Rats

Fortunately, as more and more areas of the Municipality become sewered, the incidence of rats is decreasing. Council engages a rodent control contractor who regularly services trouble spots in streets and other public areas. Residents experiencing the nuisance of rats on private property may obtain free rat bait from the Health Department.

Head Lice

Information about the treatment of head lice and free head checks are available at the Health Department.

School Entry Certificates

These certificates are now required when children are being enrolled at primary school prep level. The certificates, which state whether or not a child has been immunised against diphtheria, tetanus, polio, measles and mumps, are obtainable from the Council Health Department in the municipality where the immunisation was received.

Biological Wasp Control Launched In Ringwood

Since European and English wasps were accidentally introduced into Australia in the 1970s and 1950s respectively, they have multiplied into vast numbers to become pests in Victoria, particularly in summer, and some people are allergic to their stings.

A small parasitic wasp, *Sphecophaga vesparum*, has been introduced into Australia from Europe to control the bigger European and English wasps. A small colony of the predators was released in Ringwood during December 1989. They have been thoroughly tested under quarantine conditions by staff at the Department of Conservation Forests and Lands Keith Turnbull Research Institute and the results show that they do not kill native wasps or bees.

The biological control agent lives in the European/English wasps' nest and lays its eggs on the young pupal (developing) stage of the European Wasp. The parasitic wasps' young feed on and kill this stage of the European Wasp. This cycle can be repeated many times during summer.

1990 FREE IMMUNISATION PROGRAMME ... INFANTS ...

AFTERNOON SESSIONS

FIRST MONDAY OF THE MONTH			THIRD MONDAY OF THE MONTH		
RINGWOOD CENTRAL SALVATION ARMY HALL, Corner Wantirna & City Roads, (enter via City Road) Ringwood. 1.45 p.m. to 1.55 p.m. M.M.R. 2.00 p.m. Triple Antigen, Sabin & C.D.T. SESSION ENDS AT 2.15 p.m.			RINGWOOD EAST HOLY TRINITY HALL, 49 Patterson Street, Ringwood East. 1.45 p.m. to 1.55 p.m. M.M.R. 2.00 p.m. Triple Antigen, Sabin & C.D.T. SESSION ENDS AT 2.15 p.m.		
RINGWOOD NORTH CHRISTIAN LIFE CENTRE HALL, 222 Oban Road, Ringwood North. 2.45 p.m. to 2.55 p.m. M.M.R. 3.00 p.m. Triple Antigen, Sabin & C.D.T. SESSION ENDS AT 3.15 p.m.			HEATHMONT HEATHMONT UNITING CHURCH, 89 Canterbury Road, Heathmont. 2.45 p.m. to 2.55 p.m. M.M.R. 3.00 p.m. Triple Antigen, Sabin & C.D.T. SESSION ENDS AT 3.15 p.m.		
January	8 July	2	January	15 July	16
February	5 August	6	February	19 August	20
March	5 September	3	March	19 September	17
April	2 October	1	April	23 October	15
May	7 November	5	May	21 November	19
June	4 December	3	June	18 December	17

... ADULTS ...

EVENING SESSIONS — RINGWOOD CENTRAL

FIRST TUESDAY OF EACH SECOND MONTH, MARCH TO NOVEMBER

Ringwood Senior Citizens Club	6.15 p.m. M.M.R., Triple Antigen, Sabin & C.D.T.
Greenwood Avenue, Ringwood.	6.30 p.m. A.D.T., Tetanus, Rubella & Sabin
(Opposite Primary School)	SESSION ENDS AT 7.00 p.m.

March 6, May 1, July 3, September 4, November 13

NOTE - November session on the 13 due to Cup Day Holiday.

BUILDING CONTROL

Victoria's comprehensive Uniform Building Regulations govern building standards, type of structure, their location on your land and many other concerns.

All buildings, demolition work, additions and alterations, outbuildings, swimming pools and front boundary fences must be approved by Council's Building Surveyor's Department. The wide range of projects which need approval make an inquiry with the Department a sensible precaution before starting work on any building or other structure.

Council staff inspect buildings under construction and on completion to make sure that the work is up to standard. It is important to note, however, that you or your agent are responsible for making certain that the work being done is in accordance with your contract and meets the required standard.

If you have any queries, the Building Department is open to the public between 8.30 a.m. and 12 noon Monday to Friday and from 5.00 p.m. to 8.00 p.m. every Monday evening.

TOWN PLANNING

Town Planning is concerned with controlling the use and development of all land and buildings within the municipality in such a manner that the amenity of the area is enhanced where possible or at least not significantly reduced by the particular use or development. Control is obtained through Planning Schemes which are designed to provide a balanced approach to development.

The City of Ringwood Planning Scheme and Council Guidelines provide the necessary control and direction in dealing with applications for development within Ringwood.

Council's Town Planning Department is responsible for ensuring that development takes place in accordance with the Planning Scheme and Council Guidelines. The Department provides advice and recommendations to Council for a wide range of planning-related matters, including rezoning applications, development applications, planning legislation, the development of planning policies and Planning Scheme amendments.

In 1989 the Planning Department received over 200 applications for a variety of residential and commercial developments. Twenty-two appeals were lodged with the Administrative Appeals Tribunal appealing against decisions made by Council in dealing with planning matters.

Council's Planning Officers are in constant demand to provide information and advice to the community on a number of planning issues with over 200 enquiries being received per week. Unfortunately due to a shortage of suitably qualified town planners within Local Government and staff changes during the last year, the Department was understaffed. This in turn affected the level of service desired by Council and the community. However, with the appointment of a New Town Planner late in 1989 and two new planning staff in January 1990, Council is looking forward to providing the level of service required to satisfy the development demands for Ringwood in the 1990s.



Town Planning Assistant Nadine Elliot and Town planner Philip Turner inspecting a site.

YOUR RATES

Rates for the City of Ringwood are based on the site value of the property. For the 1989/90 financial year the general rate has been set at 1.6508 cents in the dollar. This, multiplied by the site value, equals the amount to be paid. The minimum amount payable is \$350.

Rates are due for payment on 10 December each year. If you pay in a lump sum, payment should be received by 10 April 1990. If you elect to pay by instalments, one quarter of the whole amount must be paid by 31 December and the three quarters in turn by 28 February 1990, 31 May 1990, and 31 August 1990.

The Local Government Act requires penalty interest to be charged on all late rate payments. This is calculated at the rate of 20% per annum from the due date i.e. 10 December to date of payment.

Rate Payments May Be:-

1. paid personally at the Civic Centre
2. posted to Box 156, Ringwood, 3134
3. deposited at any bank branch in Australia using the slip provided. The ANZ Bank will not charge a fee; other banks may.

The onus is on the ratepayer to ensure that payments are received at the Civic Centre by the due dates.

Deferment of Rates

The Council may, upon the application of any person who is liable for the payment of any such rate and who in the opinion of Council is in necessitous circumstances, defer the payment of the rate and the interest for such time as the Council thinks fit. The amount unpaid and the interest thereon shall remain a charge on the property. Please Note: If you are unable for any reason to pay your rates by the due date, contact the Rate Collector. Early notification could save you embarrassment and additional expenses of penalties and legal costs.

Pensioner Rate Assistance Scheme

All eligible pensioners may claim a rebate on their Council rates, to a maximum of \$135. To claim this rebate you must be able to produce documentary evidence to support your claim e.g. a current transport concession card. Please contact the Rates Office at the Civic Centre if you think you are eligible for a rebate. The staff will assist you in making your claim. In all cases, the address of the property on which the rebate is claimed must be the same as that shown on the concession card or other documentary evidence of eligibility.

Once you have claimed a rebate and you are still eligible, you will automatically receive the rebate each year. If your circumstances change and you are no longer eligible for the rebate, you should notify the rate office. Failure to do so could make you liable for a penalty.

RULES TO PROTECT YOU

Mention the words 'Council By-laws' or spot one of the By-laws Officers on patrol and many residents automatically think of parking fines, complaints or restrictions of various kinds.

Just take a minute to think of some of the benefits which we often take for granted but which are protected by these local rules,

Dog Control is a good example. Council By-laws require all dogs over the age of 6 months to be registered with the Council by 10 April each year. It is important that dogs are registered and wearing their registration disk, so if they stray and are picked up by the Ranger they can be quickly identified and returned. Dog owners must not let them run freely in the street to become a nuisance or a danger to others. On-the-spot fines apply to dog owners who let their pets wander outside their homes. These are as follows:-

— dog wandering at large in the daytime	\$100
— dog wandering at large in the night-time	\$200
— failure to register a dog	\$200
— at large in a shopping centre, an additional	\$ 50

Registration fees are as follows:-

— unsterilised dogs	\$24
— sterilised dogs	\$12
— a 50% reduction applies for dogs owned by pensioners holding a pensioner concession card.	

Council also has a By-law which limits to two dogs the number which can be kept without a permit on your property. Please call the Council Ranger on 870 4311 if you have any animal related questions or problems.

Incinerators, Barbecues and Fires in the open are another important example where Council By-laws protect our environment. This By-law is fairly tough, and was introduced to meet growing concern regarding pollution of the atmosphere and the general nuisance caused by uncontrolled burning.

It details the type of incinerator construction allowed, restricts burning on the ground without a permit, prohibits burning on three days a week, and bans burning on declared smog alert days and, naturally, total fire ban days.

Specifically this means burning is:

- prohibited on Fridays, Sundays and Mondays;
- PERMITTED ON TUESDAYS, WEDNESDAYS, THURSDAYS AND SATURDAYS BETWEEN 10.00 a.m. AND 3.00 p.m. ONLY;
- prohibited on smog alert and total fire ban days;
- prohibited where the material gives off an offensive smell or smoke and ash.

Penalties are severe for people who disregard these restrictions - anything up to \$1,000. Council is presently considering completely banning the use of incinerators and backyard burning. If this occurs adequate publicity will be given.

Please check with the By-laws Officers if you are unsure.

Other local rules protect our personal safety. Although Council issues fire hazard clearance notices and rigidly enforces them, it encourages owners to keep their properties hazard-free at all times. Common sense and respect for the environment and your neighbours' safety dictate this course of action. But if you have any problems, Council's Property Officer can supply further details on 870 4311. Residents must also keep the streets and pathways passing their properties clear of bushes and tree foliage to a height of 3 metres above the ground. Otherwise pedestrians, particularly the elderly or visually impaired, are in danger from branches around their head and face.

Council's Traffic Officers are constantly on patrol throughout the municipality. Receiving a parking ticket is unpleasant but gives teeth to parking rules made for the safety of all. Blocking clearways and dangerous and illegal parking near schools, for example, are bad driving practices which put other motorists and children at risk.

No-one can miss the **School Crossing Supervisors**. Affectionately known as the lollipop people, they carry out a most important role within the community in helping children to cross the streets with safety on their way to and from school. Motorists at school crossings **must stop** when the supervisor and/or the children are on the crossing. They may not carry on through the crossing until everyone is off the road and onto the footpath. The crossing supervisors report offending motorists. This leads to prosecution in court and the possibility of licence cancellation.



Protecting Ringwoods Children by being there.

House Numbers

It is the responsibility of the Council, under the Local Government Act, to ensure that all houses, offices, shops etc. have their street number clearly displayed. The Fire Brigade, in particular, needs this information. All owners/occupiers should mark their premises appropriately with the Council-allotted number. Council can have the numbering done and recover costs from and, if necessary, fine those who do not comply.

Though some of these rules may appear to be tough, they are only in place to protect you and your home.

COMMUNITY SERVICES AND CARE

The health and well-being of all families in the Ringwood community are Council's concern. We recognise that our community's future rests with today's children. Our services and the policies behind them are based on this belief. Council provides various programmes to help families with children from birth, through pre-school years, school days and holidays and into young adulthood. Through family day care schemes, child care centres, after-school care and holiday programmes, Council supports families in looking after their children and gives parents options in their choice of quality care.

Maternal and Child Health Service

This free service is provided by four nurses qualified in General, Midwifery and Maternal and Child Health who manage six Centres in the Municipality.

The health and well-being of all children is of enormous importance for the future of society. The service helps to set parents on the right road, provide an early warning system for possible health problems and take some of the anxiety out of coping with a new baby.

The nurses monitor children's growth and development up to six years and give residents information and advice on the health of both mothers and children. Immunisation programmes, hearing and vision checks are arranged for each child, and, if necessary, referrals to specialists and other community health and support services.

The Centres also have an educational role. Parents can learn individually and in groups about a wide range of child-related concerns such as infant and toddler feeding, child behaviour and temperament, and how they can best deal with special concerns such as night waking, toilet training, sibling rivalry, discipline, aggression, food faddism and meal-time battles.

New mothers already living in Ringwood are contacted by the Maternal and Child Health nurses soon after coming home from hospital. If you have moved into the area we invite you to visit and enrol at the Maternal and Child Health Centre nearest to you. These Centres are located at:-

Heathmont	Viviani Crescent		870 6480
Ringwood	Miles Avenue	No. 1	870 6478
		No. 2	870 4777
Ringwood East	Laurence Grove		870 6479
Ringwood North	Oban Road	No. 1	876 3307
		No. 2	876 4413

Knaith Road Child Care Centre

The Knaith Road Child Care Centre in Ringwood East provides full day care for 35 pre-school children from 7.00 a.m. to 6.00 p.m. each weekday. The staff team is headed by the Co-ordinator, Jenny Johnston, and a number of other trained staff. Fees at the Centre vary according to your income. If you have any inquiries, please telephone the Centre on 870 6966.

Family Day Care

Family Day Care is a service where children are cared for in selected private homes under Council's supervision. The home environment and the limited numbers (four pre-schoolers including the care givers own), combine to provide a set up which parallels the child's own family. This service caters for parents who live or work in Ringwood and provides regular care, part time, emergency care and care before and after school.

A Federal Government subsidy is available to reduce the cost of care for those of limited income. Council's Family Day Care Co-ordinator, Christine Nealy, can give you more information. Just telephone her on 870 4311.



Marcia McLellan, a family day care carer and the children she cares for.

After School and Holiday Care Programmes

Quality care programmes for children are conducted by the Council at holiday times and after school, and are designed to provide the parents with further options of care within the municipality. Further Information regarding these care services should be directed to the Community Support Officer, Marilyn Carmichael, on 870 4311.

Community Bus

Council has an 11-seater minibus which is available to community groups and organisations. Contact Marilyn Carmichael, Community Support Officer, on 870 4311.

Aged and Disabled Services

Council and the community together provide a range of services for older adults and younger people with disabilities who may have difficulties managing at home.

The range of services provided by Council, Community Groups, Church Organisations and Volunteers, aim to maintain a richer life with dignity and independence.

Residents are invited to contact either Jenny Kappely or Maree Jeffs on 870 4311 if you have any queries or would like to be advised of the range of services available.

Home Help

This is available for the frail and disabled to help them to continue to live independently at home. Home Help may also be available to families when the prime carer is incapacitated. House cleaning, laundry and shopping can be arranged as necessary depending on the needs of the individual.

Meals-on-Wheels

Ringwood's Meals-on-Wheels service delivers home-style meals to people who are unable to cook for themselves due to illness or age.

Meals are delivered to the clients home Monday to Friday.

Older adults who want to can enjoy a meal at one of three Senior Citizens Centres, enjoy the company of other people, and if they wish to join in with activities during the afternoon.

The three centres are:

1. Ringwood Senior Citizens Centre
Greenwood Avenue, Ringwood.
2. East Ringwood Senior Citizens Centre
Lawrence Grove, Ringwood East.
3. North Ringwood Senior Citizens Centre
Warrantyte Road, Ringwood.

Reservations for the dining rooms must be made in advance by phoning 870 6757 after 9.30 a.m. Monday to Friday. We are able to cater for special diets, i.e. diabetic, low cholesterol, etc.

Meals are delivered by volunteers using their own cars. The volunteers are reimbursed with 5 litres of petrol every time they drive.

Rostering is on a weekly, fortnightly or four-weekly basis.

If you would like an opportunity to be a volunteer and so help in your community, please call the Supervisor, Wendy Plant, on 870 6757 between 9.30 a.m. and 2.30 p.m.

Home Maintenance Service

This service is available to aged and disabled people who are not able to perform home maintenance tasks themselves. Jobs undertaken include cleaning of gutters and windows, changing of tap washers, minor repairs and fitting of hand rails.

For further information of this service ring Jan Giles between 8.30 a.m. and 5.00 p.m. Monday to Friday on 870 4311.

Library Services for our Senior Citizens

The aim of this service is to bring the older adults out of their homes and at the same time make it possible for them to enjoy the excellent library service in Ringwood. Volunteer drivers call for their passengers at their homes between 10.30 a.m. and 11.00 a.m. and take them to the library. Normal type, large print and talking books are there for them to select from. The Red Cross ladies prepare tea, coffee and sandwiches for the elderly folk to enjoy as they catch up on the news with their fellow passengers.

These outings take place every second Friday and if you are interested or would like more information, please telephone Maree Jeffs between 8.30 a.m. and 5.00 p.m. Monday to Friday on 870 4311.

Shopping Bus

Another well used volunteer service is the Wednesday shopping bus. Drivers collect the elderly and disabled passengers from their homes, take them to Eastland to do their shopping and take them home again later. Maree Jeffs can also give you information about this service. Just call her on the number above.

Aged Accommodation

You can ring Council's Community Service Officer for the Aged, Maree Jeffs, on 870 4311 to discuss the particular concern. Maree will also be happy special accommodation houses to discuss nursing homes, hostels and with you.

Telecross

The Red Cross has established this service for frail elderly people. Daily phone calls can be arranged to check on their safety and increase their feeling of security. The service is free. The Red Cross can give you further information, please telephone 729 8431 or 870 6993.

University of Third Age

Abbreviated to U3A, this large group of retired people meets for daily classes on all kinds of topics. Whatever your interests it is well worth investigating. The venue is the Senior Citizens Centre in North Ringwood. For further information please ring 879 2677

Activity Centres for Older People

There are a variety of Community Centres that provide activities suitable to older people within Ringwood and transport can be arranged to most by a band of volunteers.

For further information contact Maree Jeffs on 870 4311.

AUSTRALIAN CITIZENSHIP

Application forms for Australian Citizenship are only obtainable from the Department of Immigration and Ethnic Affairs, telephone 662 2011 or 612 3939. Council conducts the ceremony when citizenship is granted.



A new little Australian receiving her Certificate from the Mayor, Cr. Rosewarne.

YOUTH OUTREACH PROGRAMME

This important Council programme puts a Youth Outreach worker into the community to help young people and to put them in touch with services and opportunities which exist for them.

Council's Youth Outreach Worker, Craig Dodgson, makes contact with young people at schools, clubs and other places in Ringwood where they meet. Craig tries to make young people aware of the opportunities that exist within the community, so that they make the most of these resources. He is also available to provide support through basic counselling and/or direct referral to more appropriate agencies if necessary.

Craig is there for all young people. Many have specific needs i.e. they may be unemployed, without shelter, looking for information or a good way to spend their leisure time. He is also available just to have a chat over a cup of coffee or to talk about the possibility of organising a camp or other activity. In other words, for good as well as bad times.

Craig can be contacted at 227-229 Maroondah Highway, upstairs, and by telephoning 879 2585. If he is not there, an answering machine will take messages so that he can return your call as soon as possible.

WORKS DEPOT

The Ringwood Depot is situated at 381 Maroondah Highway, opposite Mines Road. It is also the site of the animal pound.

It is the central office and store for Council's 45 outdoor staff who are involved with building maintenance, litter collection, road and drainage maintenance and construction works. It also houses the plant maintenance department.

Major construction works to be undertaken in 1989/90 include:-

- Pavement strengthening, including kerb and channel, in Railway Avenue between Victoria Street and Highton Street.
 - Reconstruction of Oban Road between Warrantdyte Road and Wonga Road.
 - Installation of a roudabout in Great Ryrrie Street at Gardener Street.
 - Local Area Traffic Management Schemes in the Southwood, Eastwood and Bedford Road areas.
-

Garbage

The City of Ringwood provides a comprehensive household garbage collection service. Proliferation of waste materials in today's packaged consumer societies is a constant and expensive problem for all Councils. Ringwood has provided an extended service on the one hand to help residents get rid of the normal accumulation of rubbish and also encourage them to recycle and conserve valuable resources. There are few restrictions on the type of rubbish which the service will collect and few rules governing the package of the rubbish. Where these are made there are sound safety or other reasons to be considered.

The garbage service operates as a weekly collection. If you are unsure about the collection day in your street, ring the Civic Centre on Ext. 7311 to find out.

What We Will Collect

Household Garbage:

Household garbage includes animal and vegetable food wastes, packaging materials, plastic containers, tins and broken china and glass, cold ashes wrapped in newspaper and other household waste.

This **must** be placed in a bin of up to 86 litres capacity. There are no restrictions on the number of bins each household can put out.

Garden Waste

Garden waste includes grass cuttings, seeds, leaves and plant matter, small pruned branches, but **not** hot ashes.

This **must** be placed in a bin up to 45 litres in capacity. As with household garbage there are no restrictions on the number of bins for each household.

Larger trees and shrub prunnings must be trimmed to no more than 1.5 metres in length and securely tied in bundles capable of being handled by one person. Please place these neatly next to your garbage bins.

Indestructible Rubbish

Indestructible rubbish includes items which an ordinary household might accumulate and discard over time. Some examples might be old tins, scrap metal, broken furniture and household appliances, garden tools and equipment.

To ensure the safety of children, you must make sure that all locks on refrigerators or other cabinets are destroyed or are no longer in working order.

Please place any rubbish in this category neatly next to your garbage bins at the usual weekly collection time.

What We Will Not Collect

1. The garbage service covers households only and no industrial or business premises. No waste from these premises will be collected.
2. Builders' rubbish as a result of demolition or erection of a building will not be collected by this service.
3. Plastic bags of rubbish **will not** be collected unless placed in a bin, as injury can result from unseen sharp objects in flimsy bags.
4. Large containers will not be emptied. You must observe the maximum bin sizes - 86 litres for household waste and 45 litres for garden waste.
5. All car parts including engine blocks, bodies and axles.
6. Waste oil of any kind.
7. Dangerous chemicals.

Articles for Recycling

A door-to-door collection service is provided for glass.

Glass:

Glass bottles and jars including beer, wine and soft drink bottles are collected on a weekly basis on your collection day. Place the bottles neatly inside your garbage bins, preferably in a bottle bag, but **not** in cardboard boxes. If you haven't got a bottle bag, Peninsula Bottles can arrange one for you. Just telephone 772 1214

Glass Only

1st Ringwood Scouts, Bedford Park, Bedford Road, Ringwood.

2nd Ringwood Scouts, H. E. Parker Reserve, Heathmont Road, Heathmont.

3rd Ringwood Scouts, Knaith Road Reserve, East Ringwood.

4th Ringwood Scouts, Mines Road, East Ringwood.

7th Ringwood Scouts, B. J. Hubbard Reserve, Evelyn Road, Ringwood.

1st Heathmont Scouts, Barrow Drive, Heathmont.

Glass, Paper and Aluminium Cans

Maroondah Social Health Centre, 12 Grey Street, East Ringwood.

Aluminium Cans Only

Ringwood Apex "Cash-in-a-Can" - East end of building at Ringwood Square every Saturday morning.

Newspapers

Unfortunately due to the lack of adequate markets for newsprint the Salvation Army has withdrawn its regular collection! If the marketability of newsprint improves, Council will review the economics and desirability of recycling it. Adequate notice will be given if a service recommences.

SOME COMMONLY ASKED QUESTIONS

Question:

"Where is the nearest tip?"

Answer:

City of Nunawading tip along Burwood Highway opposite Morack Road, Melways map reference 62K8.

Question:

"When is the tip open?"

Answer:

8.00 a.m. to 3.00 p.m. seven days a week (closed Good Friday and Christmas Day).

Question:

"Where can I hire a hall in Ringwood?"

Answer:

We keep a list of available halls in Ringwood at the Civic Centre. Please see the receptionist, or telephone 870 4311

Question:

"Where can I find a J.P. or Commissioner for Affidavits and Declarations?"

Answer:

We keep a list at the Civic Centre. Please see the receptionist, or call 870 4311 The Ringwood Advisory Service also has a list. Just telephone them on 870 3233

Question:

"Where can I find a contact number for a local club or organisation?"

Answer:

We keep a list at the Civic Centre, telephone 870 4311. This is also available at Ringwood Croydon Advisory Service, telephone 870 3233.

Question:

"How can I hire a baby safety restraint?"

Answer:

Application forms are available from all Maternal and Child Health Centres. Details about the collection and return of the restraints are stated on the form.

Question:

"How can I have bees or wasps removed from my property?"

Answer:

We keep a list of apiarists at the Civic Centre. Please see the receptionist, or telephone 870 4311.

MEMBERS OF PARLIAMENT

FEDERAL PARLIAMENT

Division of Aston:

Mr. John Saunderson, M.P.
Suite 10 - 1st Floor,
322 Mountain Highway,
WANTIRNA, 3152
Telephone: 720 3233

Division of Casey:

Mr. Bob Halverson, O.B.E., M.P.
Suite 107 Shopping Centre,
CHIRNSIDE PARK, 3116
Telephone: 726 9077

Division of Streepton:

Mr. Tony Lamb, M.P.
22 Main Street,
CROYDON, 3136
Telephone: 725 3422

Please Note:

This division will
not exist after the
next Federal Election.

STATE LEGISLATIVE COUNCIL (UPPER HOUSE)

Province of Nunawading:

The Hon. George Cox, M.L.C.
69 Railway Road,
BLACKBURN, 3130
P.O. Box 499
Telephone: 877 5482

The Hon. Rosemary Varty, M.L.C.
Suite 2-1st Floor,
29 Ringwood Street,
RINGWOOD, 3134
Telephone: 870 2841

STATE LEGISLATIVE ASSEMBLY (LOWER HOUSE)

District of Mitcham:

Mr. John Harrowfield, M.L.A.
6 Station Street,
MITCHAM, 3132
Telephone: 878 4113

District of Ringwood:

Mrs. Kay Setches, M.L.A.
44 New Street,
RINGWOOD, 3134
Telephone: 870 7396

AUSTRALIAN ELECTORAL COMMISSION

Inquiries regarding change of address OR enrolling for
Federal and State elections should be directed to:-

Aston

31 Macauley Place,
BAYSWATER, 3153
Telephone: 729 8713

Deakin

1st Floor - 20 Melbourne Street,
RINGWOOD, 3134
Telephone: 870 8294



Community Information

ACCOMMODATION

(See also Housing and Emergency Housing Headings)

Maroondah Accommodation Services
312 Mt. Dandenong Road, Croydon 725 2188

Ring for an appointment.

Emergency housing and information on a range of housing services.
Provides interest-free loans for bonds and rent in advance
on rental accommodation for low-income people.

AGED ACCOMMODATION

There is a variety of facilities locally to serve the
needs of elderly and frail persons. Information can be
obtained from Ringwood Croydon Advisory Service 870 3233

OR ring Council's Community Services Officer for the Aged,
Maree Jeffs, to discuss particular concerns. 870 4311

AGEING

Victorian Council on the Ageing
1st Floor, 449 Swanston Street, Melbourne 663 6199
Provides information for the elderly and their families
as well as counselling services.

ALCOHOLISM

A.A. Alcoholics Anonymous 429 1833

For contacts in Ringwood

"ADDREC" 36 Pine Crescent, Boronia 762 4200

Tuesday to Friday 10.00 a.m. to 5.00 p.m.

Thursday 8.00 p.m. - Personal Development Group

Wednesday 8.00 p.m. - Parent - Friends Group

Monday 3.00 p.m. - Family Action Community Team

24-hour telephone answering service.

Al-Anon

Assists relatives of problem drinkers

Office hours - 10.00 a.m. to 4.00 p.m. 650 3368

Addcare

1030 Whitehorse Road, Box Hill 898 9511

Monday to Friday 9.00 a.m. to 5.00 p.m.

Evening appointments available for counselling on request -
also education about alcohol and drugs.

Maroondah Alcoholic Recovery Project 725 5333

433 Mt. Dandenong Road, Kilsyth

Runs community residential treatment centres for men and women.

ARTHRITIS FOUNDATION OF VICTORIA

Yarra Boulevard, Kew P.O. Box 195, Kew 862 2555

The Nunawading/Ringwood Group meets at the Maroondah

Social Health Centre, Patterson Street, East Ringwood 879 3933

Third Thursday of Month at 1.00 p.m.

Contact Mrs. Stewart - 870 9501

ARTS AND CRAFTS GROUP

A current listing is kept at the Civic Centre 870 4311

and by the Ringwood Croydon Advisory Service 870 3233

"BIALA" RINGWOOD

2 Greenwood Avenue, Ringwood 870 2335

Parents Support Group Monday, Wednesday,

Thursday 9.30 a.m. to 3.00 p.m.

A playgroup-type programme for pre-school children with
disabilities and special needs, providing parent relief.

Early intervention programme has commenced on Tuesdays and Fridays.

Referral needed. Contact - Mrs. Marjorie Oates 879 1494

BLIND

Refer to - Maroondah Centre for Visually Handicapped, 729 7269

or contact - Association for the Blind, 822 1111

- Royal Victorian Institute for the Blind. 529 3544

Also at Ringwood Library is a collection of audio books on
cassette tapes, and a selection of large print books.

CARE FORCE

22 Croydon Road, Croydon 725 1622

Monday to Friday 9.00 a.m. to 5.00 p.m.

Provides a variety of programmes to strengthen family life;
prevent family breakdown and the institutional care of children.

CATHOLIC FAMILY WELFARE BUREAU

459A Whitehorse Road, Mitcham. (Cnr. Albert Street) 873 4344

An agency open to all, which provides general, marriage
and family counselling to assist people experiencing personal
difficulties. Also counselling for children and adolescents,
"Big Brother", and "Big Sister" programmes

CENTRAL RINGWOOD COMMUNITY CENTRE

See entries under Community Centres.

CHAMBER OF COMMERCE AND INDUSTRY

P.O. Box 62, Ringwood, 3134

Community Information

ACCOMMODATION

(See also Housing and Emergency Housing Headings)

Maroondah Accommodation Services
312 Mt. Dandenong Road, Croydon 725 2188

Ring for an appointment.

Emergency housing and information on a range of housing services.

Provides interest-free loans for bonds and rent in advance
on rental accommodation for low-income people.

AGED ACCOMMODATION

There is a variety of facilities locally to serve the
needs of elderly and frail persons. Information can be
obtained from Ringwood Croydon Advisory Service 870 3233

OR ring Council's Community Services Officer for the Aged,
Maree Jeffs, to discuss particular concerns. 870 4311

AGEING

Victorian Council on the Ageing
1st Floor, 449 Swanston Street, Melbourne 663 6199

Provides information for the elderly and their families
as well as counselling services.

ALCOHOLISM

A.A. Alcoholics Anonymous 429 1833

For contacts in Ringwood

"ADDREC" 36 Pine Crescent, Boronia 762 4200

Tuesday to Friday 10.00 a.m. to 5.00 p.m.

Thursday 8.00 p.m. - Personal Development Group

Wednesday 8.00 p.m. - Parent - Friends Group

Monday 3.00 p.m. - Family Action Community Team

24-hour telephone answering service.

Al-Anon

Assists relatives of problem drinkers
Office hours - 10.00 a.m. to 4.00 p.m. 650 3368

Addcare

1030 Whitehorse Road, Box Hill 898 9511

Monday to Friday 9.00 a.m. to 5.00 p.m.

Evening appointments available for counselling on request -
also education about alcohol and drugs.

Maroondah Alcoholic Recovery Project 725 5333

433 Mt. Dandenong Road, Kilsyth

Runs community residential treatment centres for men and women.

ARTHRITIS FOUNDATION OF VICTORIA

Yarra Boulevard, Kew P.O. Box 195, Kew 862 2555

The Nunawading/Ringwood Group meets at the Maroondah

Social Health Centre, Patterson Street, East Ringwood 879 3933

Third Thursday of Month at 1.00 p.m.

Contact Mrs. Stewart - 870 9501

ARTS AND CRAFTS GROUP

A current listing is kept at the Civic Centre 870 4311

and by the Ringwood Croydon Advisory Service 870 3233

"BIALA" RINGWOOD

2 Greenwood Avenue, Ringwood 870 2335

Parents Support Group Monday, Wednesday,

Thursday 9.30 a.m. to 3.00 p.m.

A playgroup-type programme for pre-school children with
disabilities and special needs, providing parent relief.

Early intervention programme has commenced on Tuesdays and Fridays.

Referral needed. Contact - Mrs, Marjorie Oates 879 1494

BLIND

Refer to - Maroondah Centre for Visually Handicapped, 729 7269

or contact - Association for the Blind, 822 1111

- Royal Victorian Institute for the Blind. 529 3544

Also at Ringwood Library is a collection of audio books on
cassette tapes, and a selection of large print books.

CARE FORCE

22 Croydon Road, Croydon 725 1622

Monday to Friday 9.00 a.m. to 5.00 p.m.

Provides a variety of programmes to strengthen family life;
prevent family breakdown and the institutional care of children.

CATHOLIC FAMILY WELFARE BUREAU

459A Whitehorse Road, Mitcham. (Cnr. Albert Street) 873 4344

An agency open to all, which provides general, marriage
and family counselling to assist people experiencing personal
difficulties. Also counselling for children and adolescents,
"Big Brother", and "Big Sister" programmes

CENTRAL RINGWOOD COMMUNITY CENTRE

See entries under Community Centres.

CHAMBER OF COMMERCE AND INDUSTRY

P.O. Box 62, Ringwood, 3134

CHARITY CARAVAN

The City of Ringwood has two caravans which are available to 870 4311
local community groups for fund-raising purposes. Contact Civic Centre.

CHILDBIRTH AND PARENTING ASSOCIATION

2 Mountain View Street, Croydon. 725 4832
Provides classes, support groups and literature. 725 3485
Bassinette restraints and electric breast pump for hire.
9.00 a.m. and 12.00 noon weekdays.

(Correspondence to P.O. Box 219, Mooroolbark, 3138)

CHILDREN'S SERVICES

Family Day Care Service provides minding in
carefully selected private homes under Council supervision.
Available full-time, part-time or for relief care of pre-school
children; also before and after school care of school age children.
Contact Co-ordinator Mrs. Christine Nealy 870 4311

After School Programme An activities programme sponsored by
Council provides care and recreation for school age children
weekdays 3.30 p.m. - 6.00 p.m. during school terms at the
following locations :-

Eastwood Primary School
Ringwood Primary School
Norwood Primary School
Ringwood Community Centre

Children are also picked up in the Community Bus and taken to these
locations to participate in the Programme.
Fees vary according to means. Further information is available
from the Community Support Officer, Marilyn Carmichael 870 4311

Child Care Centres

A list of commercially operated centres is available from the
Civic Centre 870 4311

Knaith Road Child Care Centre

Inquiries should be directed to the Co-ordinator -
Jenny Johnston 870 6966

Ringwood Community Child Minding

40 Warrandyte Road, Ringwood 870 6294
A non-profit community organisation providing full time,
part time occasional and emergency child care. Map Ref: N6

Ringwood North Playgroup Inc.

Held at Scout Hall, North Ringwood Reserve
Enrolment Officer - Jan Sutcliffe 876 1060

CHIROPODY

Chiropody services operate at the following centres. *An appointment is necessary*

- Ringwood Senior Citizens Centre
Greenwood Avenue, Ringwood. 870 1884
- Ringwood East Senior Citizens Centre
Laurence Grove, Ringwood East. 870 0289
- North Ringwood Senior Citizens Centre
Norwood Reserve, Warrandyte Road, Ringwood. 879 2677

CHURCHES

Anglican Church of Australia:-

Christ Church:-

- * 207 Canterbury Road, Heathmont
Father Martyn Hope 870 7119

Holy Trinity:-

- * 49 Patterson Street, Ringwood East
Father Michael Godfrey 870 1000

St. Pauls:-

- * 40 Warrandyte Road, Ringwood 870 6074
Father Douglas Edmonds 870 2093

Assembly of God:-

- Cnr. Mullum Road & Jeffrey Drive, North Ringwood
Pastor John Woodhouse 870 0588

Baptist:-

- * Cuthbert Street, Heathmont
Rev. Kitchen 729 5748
- * 44 Dublin Road, Ringwood East
(Ringwood Christian Family Centre) Church 879 3429
Pastor J. McNeice Home 725 2400
- * Ringwood Baptist
Rev. D. Jamieson 725 2231

Calvary Baptist Church:-

- * 12-14 Armstrong Road, Heathmont 729 8481
Contact Ernie Veszely 728 5778

Christian Brethren - Gospel Chapel:-

- 1 Tamar Street, Ringwood - John Crouch 870 0102
Pastor Wraight 876 4071

Christian Life Centre:-

- 222 Oban Road, North Ringwood 876 1811

Christian Science:-

- 26 Station Street, Ringwood 870 6807

Church of Christ:-

- 13 Bedford Road, Ringwood 870 8169

Lutheran Church:-

Cnr. City and Wantirna Road, Ringwood 870 7054

Presbyterian Church:-

6 Waterloo Street, Heathmont 870 6161

Roman Catholic Church:-

(876 3717

* 120 Oban Road, Ringwood North (876 3077

* 14 Bedford Road, Ringwood 870 6056

* Cnr. Bona and Patterson Streets, Ringwood East (870 7277

(870 4820

Reach Out Christian Centre

54 Charter Street, Ringwood

Pastor : Angelo Cettolin 879 3889

Salvation Army:-

51 Wantirna Road, Ringwood Office 870 0720

Welfare 879 2894

Officer 870 6552

Seventh-Day Adventist Church:-

28 Mullum Mullum Road, Ringwood.

Uniting Church in Australia:-

* Greenwood Avenue, Ringwood

Rev. Arthur Poole 870 6033

* 81 Canterbury Road, Heathmont

Rev. Rob Catford 729 4452

* Dickson Crescent, North Ringwood

Rev. Jenny Burnes 870 9913

* 28 Freeman Street, East Ringwood 870 2017

COMMUNITY AID ABROAD, RINGWOOD & DISTRICT GROUP

Contact : Mr. Ray Hibbs, Secretary A.H: 870 2186

COMMUNITY CENTRES**Central Ringwood Community Centre**

18 Pitt Street, Ringwood 870 2602

Provides a friendly place to call in. A range of adult classes and play groups for pre-school children.

Friendly Circle Group for over 50,s - Wednesday afternoon.

Map Ref : P7

North Ringwood Community House

120 Oban Road

Co-ordinators Jo and Kathy 876 3421

Small group of elderly folk meet each Tuesday

11.30 a.m. to 2.30 p.m. for varied activities.

All activities on other days are open to any age group.

COMMUNITY SUPPORT OFFICER

Council's Community Support Officer, Marilyn Carmichael, is 870 4311

available to provide a wide range of information and assistance to individuals and groups in the City. She encourages residents to participate in community affairs and works with residents on projects to meet evolving needs. Marilyn may be contacted at the Civic Centre.

COMMUNITY SERVICES VICTORIA**Regional Management Unit**

46 New Street, Ringwood 870 0054

Programmes accommodated within these premises are:

Regional Directorate

Resource Management Unit

Specialist Child and Family Services

Regional Planning Unit

Aged & Disability Services Unit

39 Ringwood Street, Ringwood 870 9077

Family, Youth and Children's Services Unit

62 Charter Street, Ringwood 879 3311

Human Resource Management Team

39 Ringwood Street, Ringwood 870 9077

Intellectual Disability Services Unit

39 Ringwood Street, Ringwood 870 9077

Community Supervision Unit

15 Ferguson Street, Heatherdale 874 7522

C.S.D.G.

C.S.D.G. is the Community Support and Development Grants 879 3311

Programme of the State Government. Through grants to community groups, C.S.D.G. supports services to strengthen families

and encourage people to take an active role in community affairs.

In Ringwood the local work of the C.S.D.G. programme is done by the Ringwood Community Development Committee (for detail refer to the heading in this listing).

CONSUMERS CREDIT LEGAL SERVICE

4th Floor, 636 Bourke Street, Melbourne, 3000 670 5088

Free advice on credit

9.00 a.m. to 5.00 p.m. Monday - Friday

CONSUMER RESOURCE AND ADVOCACY CENTRE - OUTER EAST

214 Mt. Dandenong Road, Croydon.

This Centre has been established to deal with a variety of consumer related problems and issues. It provides :-

Consumer Credit Advocacy Programme	723 4469
9.00 a.m. - 5.00 p.m. Monday to Friday	
Consumer Affairs Project (Information and Advice)	723 3631
9.00 a.m. - 5.00 p.m. Monday to Friday	723 4469
Consumer Buying Advisory Service	
9.00 a.m. - 12.30 p.m. Monday to Friday	723 4650
MINISTRY OF CONSUMER AFFAIRS	
88 Maroondah Highway, Ringwood	879 5677
(Upstairs - opposite Billy Guyatts)	
CORRECTIONS	
Ringwood Community Corrections Centre	879 2626
51 Seymour Street, Ringwood.	
Provides Court Advisory Service for adult offenders and supervision of community based orders, parolees and people released on early release schemes.	
COURTHOUSE	
Bourke Street, Ringwood. Map Ref:O5	870 6594
Advice may be received from the Clerk of Courts on any weekday between 9.30 a.m. and 4.00 p.m. by appointment.	
CREDIT UNIONS	
Croydon Community Credit Union	879 2201
11 Civic Place, Ringwood.	
Whitehorse Savings & Loans Co-operative Ltd.	898 4652
Savings, loans, financial counselling, taxation advice, will consultancy.	
DAY CENTRES AND DROP-IN PROGRAMMES	
For elderly or housebound people, young mothers, or anyone. Contact Ringwood Croydon Advisory Service	870 3233
DAY HOSPITALS	
Contact Jenny Kappely, Council's Co-ordinator Home Care Services	870 4311
to discuss requirements.	
DEAFNESS	
See H.E.A.R. Service at Maroondah Social Health Centre	879 3933
DENTAL CLINIC (Maroondah Hospital)	
124 Mt. Dandenong Road, Ringwood East	871 3391
DENTISTS AND DOCTORS	
A current listing is kept by Ringwood Croydon Advisory Service	870 3233

DISABLED PERSONS' FACILITIES

Wednesday Shopping Bus:

A bus service for aged people has been arranged by Ringwood Council. The service operates every Wednesday and collects people from their homes. Passengers are driven to Eastland and later returned home.

Contact Council's Community Services Officer for the Aged, Maree Jeffs. 870 4311

Independent Living Centre:

52 Thistlewaite Street, South Melbourne 690 9177

The Centre has a display of aids for the disabled and an information service which provides details about cost and availability of appliances. Visits by appointment only.

Parking:

Reserved parking spaces for disabled motorists are located at Eastland, outside Lower Mall, between Myers and Woolworths, two at lower level near the north-west corner of the building, and two at the upper level near the Commonwealth Bank. Rooftop carpark above Safeway, corner Warrandyte Road and Maroondah Highway.

North Ringwood, in service road behind shops (enter from Oban Road) Burnt Bridge Shopping Centre, Maroondah Highway, in service lane. Ringwood Market (enter from Bond Street). Ringwood Square Shopping Centre (enter from Seymour Street, adjacent to front entrance).

Telecom Business Office:

Telecom has a range of aids available to assist disabled people with using a telephone.

Initial enquiries
56-60 Rutland Road, Box Hill 895 7211

Toilets:

Public toilets which include special facilities for the disabled are located -
in Myer Eastland on 2nd Level adjoining the hairdressing salon (one male and one female toilet for disabled).
at Ringwood Lake, Ringwood Library, Wombolano Park and Ringwood Cultural Centre.
Ringwood Market - opposite disabled parking bay.
Ringwood Square Shopping Centre - near Advisory Service

Disabled and Disadvantaged Worker's Co-operative:

Chairman: Mr. John Meriesch General Enquiries 876 2918
 Provides arranged work for independent disabled or disadvantaged people.

Registered Office: 87 Wonga Road, Ringwood
 Retail Outlet: Market at Burnt Bridge Shopping Centre
 1st Sunday every month.

DO CARE

A friendly visiting scheme for elderly lonely people 662 2044
 organised by Wesley Central Mission throughout Melbourne.

DOMICILIARY CARE CO-ORDINATOR

Council's Co-Ordinator Home Care Services. Jenny Kappely, 870 4311
 is available to advise on a wide range of matters dealing with domiciliary and aged care. Jenny may be contacted at the Civic Centre.

DRIVING TRAINING

Metropolitan Traffic Education Centre, Colchester Road, Kilsyth.
 A community project providing driver education on an off road driver complex
 Pre and Post licence drivers
 Keith George 725 4758

DRUGS

For information about drug and alcohol use and abuse contact:
 The Alcohol and Drug Foundation 690 6000
 Buoyancy Foundation of Victoria 429 3322
 D.U.P.A. (Drug Users and Parents' Aid) - 10 Small Street, Hampton 598 5366

ELDERLY DAY CARE

A number of Elderly Day Care Centres are available within Ringwood. These are -

Central Ringwood Community Centre, 13 Bedford Road, Ringwood
 Contact Pam or Pauline 870 2602
 Elderly folk meet Wednesday mornings. Varied activities.
 Transport can be arranged.

Friendly Circle A more active group of retired folk who meet at above address on Wednesday afternoon. Food free.
 Contact Bidy Hope.

Greenwood Day Care Centre Uniting Church, Cnr Greenwood Street and Station Street, Ringwood.
 Operates Mondays and Thursdays 10.30 a.m. to 2.30 p.m.
 Contact Deaconess Gwen Shanks 877 1938
 Activities, socialising, gentle exercise programme all incorporated with high quality loving care. For frail elderly.
 Transport can be arranged.

Heathmont Drop In Centre Uniting Church,
 81 Canterbury Road, Heathmont. Operates Mondays.
 Contact persons Mrs. Lois Hunkin 870 7281
 Rev. Catford 729 4452

Activities: cards, guest speakers. Hospitality assured.
 Transport can be arranged.

Maroondah Social Health Centre
 77 Patterson Street, East Ringwood 879 3933
 Have activities and socialising for elderly, one day weekly.
 Transport can be arranged.

North Ringwood Community House

See entries under Community Centres.

R.V.I.B. Social Centre

Red Cross Hall, Knaith Road, East Ringwood
 First and third Wednesday each month. 10.00 a.m. to 3.00 p.m.
 Social and supportive drop in centre for visually impaired.
 Transport can be arranged 529 3544

EMERGENCY FINANCIAL RELIEF

Contact Ringwood Croydon Advisory Service
 for referral to appropriate sources. 870 3233

EMERGENCY HOUSING

For Women and Children, contact Women's Refuge Referral Service 329 8433
 For Youth, contact Youth Accommodation Services 729 2022
 For Families, contact Maroondah Accommodation Services for
 centre information and referral. 725 2188

EMPLOYMENT

Commonwealth Employment Service (C.E.S.) "Job Centre"
 88 Maroondah Highway, Ringwood 871 1888
 Career Reference Centre, Cnr. Elizabeth & La Trobe Streets,
 Melbourne. 663 8466

ENVIRONMENT

Complaints about pollution of the environment should be directed to Council's By-laws Officers. 870 4311
 Environment Protection Authority (All Hours) Business 628 5777

EQUAL OPPORTUNITY - OFFICE OF THE COMMISSIONER FOR

4th Floor, 356 Collins Street, Melbourne 602 3222

FAMILY PLANNING SERVICES**Government sponsored**

Bayswater - 658 Mountain Highway, Bayswater
 For appointments during times listed:- 729 1337
 Monday 1.30 p.m. - 7.30 p.m., Wednesday 12.30 p.m. - 6.30 p.m.
 Natural family planning - Thursday 9.00 a.m. - 3.00 p.m.

Nunawading - Family Planning Clinic, 7 Wood Street 878 9635

For appointment during times listed:-
Monday, Tuesday and Thursday 6.00 p.m. - 8.30 p.m.
Friday 9.00 a.m. - 11.30 a.m.

Wantirna South - Infant Welfare Centre, 3 Coleman Road 801 8259

For appointment during times listed:-
Tuesday 2.30 p.m. - 5.00 p.m.

(Church sponsored)

Pregnancy Action Centre, 5 Greenwood Avenue, Ringwood 870 7044

Monday, Tuesday, Thursday & Friday 9.30 a.m. - 3.00 p.m. -
Wednesday - 9.30 a.m. - 8.00 p.m.

Monday Evenings 6.00 p.m. - 8.00 p.m.

Saturday 10.00 a.m. - 12.00 noon

Free Pregnancy Testing - Post Abortive Counselling

Pregnancy support and counselling - medical referral

Mothers Support Group

FAMILY WELFARE

See Care Force, Catholic Family Welfare Bureau, or
Maroondah Social Health Centre.

FINANCIAL COUNSELLING

Outer East Financial Counselling Service 894 1966

A free service covering Ringwood, Croydon and Nunawading
residents, and people working in the area, based at R.O.K.,
Silver Grove, Nunawading

Monday to Friday 9.00 a.m. - 5.00 p.m. Ring for an appointment

FOSTER CARE

For emergency, respite, pre-adopt, short and long term foster
care of children 0-16 years.

Contact Care Force, Foster Care, 22 Croydon Road, Croydon 725 1622

For foster care and other accommodation for teenagers approximately

14-18 years contact S.H.A.C. (Supportive Housing Accommodation) 878 4622

27 Holland Road, Blackburn South A.H: 879 1344

GAMBLERS ANONYMOUS

P.O. Box 369, Richmond, 3121

Meetings Monday 8.00 p.m., St. Francis Catholic Church,

Whitehorse Road. Box Hill. Rob - after 6.00 p.m. 232 9627

GARDEN, RINGWOOD COMMUNITY GARDENING CO-OPERATIVE

Located at the corner of Belgrave and Canterbury Roads.

Garden plots are available for individuals and families to lease.

Contact Mr. Frank Wright or A.H: 870 2961

Mr. Trevor Walker A.H: 874 4782

GOLF COURSE

Ringwood's Public Golf Course is located in Canterbury Road, 870 7496
Ringwood. Barbeque facilities are open to public. Map Ref: U3

GROW

A Mental Health self-help and support organisation 898 8525
519 Station Street, Box Hill, Monday - Friday 10.00 a.m. - 3.00 p.m.

HALLS FOR HIRE A listing is available from the Civic Centre 870 4311

HEALTH

For Baby Health Centres see Infant Welfare Centres

See also Maroondah Social Health Centre.

H.E.A.R.

A hearing education and rehabilitation service for adults 879 3933
provided at the Maroondah Social Health Centre.

Screening tests arranged.

HEARING AID SERVICE

National Acoustic Laboratories, Hearing Centre

399 Lonsdale Street, Melbourne 604 4260

or Whitehorse Plaza, Box Hill 890 0606

People who hold a Pensioner Health Card may receive free
hearing aids, batteries, repairs and maintenance of the aid.

HISTORICAL RESEARCH GROUP, RINGWOOD

President: Mrs. E. Pullin M.B.E., 20 Mullum Road, Ringwood 870 4394

Secretary: Mr. J. Lindsay, Unit 1/24 Greenwood Avenue, Ringwood. 870 8463

HOBBY CLUBS

A current listing is kept at the Ringwood Croydon 870 3233

Advisory Service and by the Civic Centre 870 4311

HOME CARE (DOMICILIARY SERVICE)

Handyman Service:

Contact: Home Help Supervisor, Jan Giles, at
Ringwood Civic Centre 870 4311
Primarily a home maintenance/odd jobs service for pensioners.
Cleaning of windows, spoutings and minor repairs are carried
out (but not gardening).

Home Help Service:

Contact: Home Help Supervisor, Jan Giles at
Ringwood Civic Centre 870 4311
Provides assistance for aged, frail and/or disabled to retain
them in their own homes for as long as possible.

Meals on Wheels:

Contact Meals on Wheels Supervisor - Wendy Plant 870 6757

HOME TUTOR SCHEME

Learn to speak English in your own home. Volunteer tutors
teach English to migrants.

Outer Eastern Area
Contact: Mrs. Sue Smith 720 5944
658 Mountain Highway, Bayswater (in Family Planning Clinic
opposite Safeway)
Tuesday to Friday 9.30 a.m. to 1.30 p.m.

HOSPITALS

Box Hill and District Hospital, Nelson Road, Box Hill 895 3333
Manvantara Hospital, 46 Warrandyte Road, Ringwood 870 9611
Maroondah Hospital, Mt. Dandenong Road, Ringwood East 879 3333
Ringwood Private Hospital, 36 Mt. Dandenong Road, Ringwood East 870 3322
For a list of Hospital Auxiliaries contact Ringwood Croydon
Advisory Service 870 3233
or the Civic Centre 870 4311

HOUSING

Community Living Support Service - C.L.S.S.

A community based system managing and maintaining accommodation
and flexible services for people with an intellectual disability.
There is **no** charge for this service.

For residents of Ringwood, Croydon and Nunawading -
Contact: Peter Gibson 723 6585
Options for Community Living 725 9811
Office of Intellectual Disability Services (OIDS) 870 9077
Shop 3, 12 Thomas Brew Lane, Croydon, 3136 and
12 Mount View Street, Croydon, 3136

Maroondah Accommodation Services

312 Mt. Dandenong Road, Croydon 725 2188

Ministry Of Housing, 19 Ringwood Street, Ringwood 879 5433

Provides the following services:-
General housing information and advice; Public housing applications;
Wait turn applications; Maintenance; Priority housing; Bond and Relocation
assistance (private rental); Movable Units (Granny Flat Applications);
Rent Collections (8.15 a.m. - 4.30 p.m.)

Outer East Regional Housing Council

(Housing Research, Policy and Advocacy) 725 9288

312 Mt. Dandenong Road, Croydon

Outer East Tenants Information Service 312 Mt. Dandenong Road, Croydon,

Free advice on tenancy issues.
Monday, Wednesday, Friday 1.30 p.m. - 4.30 p.m.
Tuesday, Thursday 9.30 a.m. - 12.30 p.m. 725 9152

Co-operative Housing Society - Ringwood

Contact Secretary: 21 Ringwood Street, Ringwood 870 6311

Ringwood/Croydon Rental Housing Co-operative

312 Mt. Dandenong Road, Croydon 725 4231

Victorian Housing Advisory Service

Shop 22, Myer Arcade, 250 Elizabeth Street, Melbourne 663 1141
Provides free advice and guidance to people building or
buying a house or flat.

INFANT WELFARE CENTRES

See information under Maternal and Child Health Centre heading.

INFORMATION

For information on all sorts of services and facilities, contact
Ringwood Croydon Advisory Service 870 3233
Monday - Friday 9.30 a.m. - 4.00 p.m. Saturday 10.00 a.m. - 12.00 noon
at Ringwood Square Shopping Centre, Seymour Street, Ringwood

INTELLECTUAL DISABILITY SERVICES

Outer Eastern Office

39 Ringwood Street, Ringwood 870 9077
A government service providing advice and assistance
to intellectually handicapped people, regardless of age.

INTERCHANGE

A regional community scheme which provides support and relief
for families with disabled children.
Contact the Co-ordinator 729 5422
Outer Eastern Office - 658 Mountain Highway, Bayswater 720 5944

INTERPRETERS

Telephone Interpreter Service	416 9999
Ringwood Croydon Advisory Service has names of interpreters available locally	870 3233

JUSTICES OF THE PEACE AND COMMISSIONERS FOR TAKING AFFIDAVITS

A current listing of Justices of the Peace and Commissioners is kept at the Ringwood Croydon Advisory Service	870 3233
---	----------

KINDERGARTENS

See Pre-Schools

LEGAL

Legal Aid Commission of Victoria - 19 Ringwood Street, Ringwood	879 5500
---	----------

Nunawading and Eastern Suburbs Community Legal Service

26 Blackburn Road, Blackburn	877 5777
------------------------------------	----------

Staffed by paid and voluntary solicitors. **Appointments necessary.**

Outer Eastern Community Legal Service - operates on Wednesday

evenings 6.00 p.m. - 7.00 p.m. at the Community Centre	726 5488
--	----------

Brice Avenue, Mooroolbark. Solicitors are rostered to give free advice and make referrals where needed. No appointment is necessary.

LEGACY

Assists families of deceased servicemen in a variety of ways.

Contact Melbourne Legacy or	663 3564
-----------------------------------	----------

Yarra Valley Legacy Group, Mr. Edward Pawley	879 4516
--	----------

LIBRARY

Ringwood Library, 28 Warrandyte Road. Map Ref: O6	870 0177
---	----------

Has community information and activities as well as books.	870 0377
---	----------

LITERACY

Free and confidential help is available from trained tutors for adults wishing to improve their reading and writing skills.

For further information contact;

Outer Eastern Literacy Programme - Marion Kennard	(059) 68 8267
or	762 4211

Maroondah Literacy Group - Eileen Toohill	879 6421
---	----------

or Central Ringwood Community Centre	870 2602
--	----------

LITTLE ATHLETICS

A current listing of the several Little Athletics Groups is

kept at the Civic Centre	870 4311
--------------------------------	----------

and by Ringwood Croydon Advisory Service	870 3233
--	----------

LONE PARENTS

See Birthright, Parents Without Partners

For information about childcare, holiday programmes, social and support groups, contact Council's Community Services Officer	870 4311
or Ringwood Croydon Advisory Service.	870 3233

MARRIAGE CELEBRANTS

A current listing is kept by Ringwood Croydon Advisory Service.	870 3233
--	----------

MARRIAGE COUNSELLING

Catholic Family Welfare Bureau, 459A Whitehorse Road, Mitcham (cnr. Albert Street)	873 4344
--	----------

Maroondah Social Health Centre, 75 Patterson Street, East Ringwood	879 3933
--	----------

Marriage Guidance Council, 10 Civic Square, Croydon	725 9964
---	----------

MAROONDAH CENTRE FOR THE VISUALLY HANDICAPPED

"Penumbra" 268 Canterbury Road, Heathmont. Map Ref: T7	729 7269
--	----------

"Penumbra" is a day centre for visually handicapped people in the outer eastern suburbs, which offers crafts, social and recreational activities. Monday 10.00 a.m. - 1.30 p.m., Tuesday, Wednesday & Thursday 10.00 a.m. - 12.00 noon and 1.00 p.m. - 3.00 p.m.

MAROONDAH SOCIAL HEALTH CENTRE

73-77 Patterson Street, Ringwood East	879 3933
---	----------

A centre which provides counselling and therapy for a wide range of personal, social and family problems. Also provides health education programmes and self help programmes. These include - Arthritis Sufferers & Parkinsons' Disease Association: Group meetings each fourth Thursday of the month.

MATERNAL & CHILD HEALTH CENTRES

Heathmont: Viviani Crescent	- Nurse Wendy Jones	870 6480
-----------------------------	---------------------	----------

Ringwood: Miles Avenue	No. 1 - Nurse Anne Fiedler	870 6478
------------------------	----------------------------	----------

	No. 2 - Nurse Jan Simpson	870 4777
--	---------------------------	----------

Ringwood East: Laurence Grove	- Nurse Anne Fiedler	870 6479
-------------------------------	----------------------	----------

Ringwood North: Oban Road	No. 1 - Nurse Robyn Jones	876 3307
---------------------------	---------------------------	----------

	No. 2 - Nurse Wendy Jones	876 4413
--	---------------------------	----------

MEDIATION

Neighbourhood Mediation Centre - Outer East

Trained mediators will help anyone with an on-going relationship (with the exception of family disputes) find a satisfactory solution to their disagreements.

Located at 6 Bedford Road, Ringwood	879 1144
---	----------

Ring for an appointment.

MENTAL HEALTH

Outer Eastern Mental Health Service 1-3 Erica Avenue, Boronia 762 2200
Provides counselling and support services.
Monday, Wednesday & Friday 9.00 a.m. - 5.00 p.m.
Tuesday and Thursday 9.00 a.m. - 7.00 p.m.
Evening appointments may be available.

MIGRANTS

A current listing of services (e.g. language classes) is kept
by the Ringwood Croydon Advisory Service. 870 3233

MONKAMI

Cnr. Dorset and Lincoln Roads, Croydon 725 8677
This complex includes a day training centre, an activity
therapy centre and residential accommodation for the
intellectually disabled.
Retail outlet - Olinda House & Garden Centre 735 3247
207 Main Street, Lilydale. 735 3611

MUSICAL GROUPS

A current listing is kept at the Ringwood Croydon 870 3233
Advisory Service and by the Civic Centre 870 4311

NADAVOC INDUSTRIES

1-19 Colombo Street, Mitcham 873 1111
A sheltered workshop for disabled people.

NEWS

Ringwood Audio News

A monthly cassette of news and articles from the local press
for persons who cannot read newspapers due to sight impairment
or other physical difficulties. Contact through Maroondah
Social Health Centre. 879 3933

NEW VISIONS

Uniting Church, Station Street, Ringwood
Please ring Anne Barber, Secretary 870 3642

A centre which provides a warm, caring atmosphere which will
enable the person with a disability to function as responsibly
and independently as possible.

NORTH RINGWOOD COMMUNITY HOUSE

120 Oban Road, North Ringwood. Map Ref: G7 876 3421
Provides a range of adult classes and children's
programmes during holiday periods.

NURSING

Royal District Nursing Service

2 Scoresby Road, Bayswater 729 1666
Home visiting service by fully qualified nurses for ill
or disabled people of all ages.

NURSING MOTHERS' ASSOCIATION

5 Glendale Street, Nunawading 877 5011
Provides information, counselling and literature 878 3304
on breast feeding. (24 hrs.)
Local groups meet regularly in Ringwood and Heathmont
Nola Barker 876 4512
Kathy Ward 874 7270

OPPORTUNITY SHOPS

Baptist Bargain Centre

54 Wantirna Road, Ringwood. Collection service available 870 2954

Christian Brethren Family Care Op Shop

116 Railway Avenue, Ringwood East 879 2323

Church of England Op Shop,

107 Canterbury Road, Heathmont

Maroondah Hospital Op Shop

4 Murray Place, Ringwood 879 1856

St. Vincent de Paul

Cnr. Olive and New Street, Ringwood 870 9124

"Thrifty Things", 83 Bedford Road, Ringwood East

Run by Maroondah Social Health Centre, Collection Service 879 3933

Vermont Lions Club Treasure Shoppe

42 Railway Avenue, Ringwood East. Collection service 870 7768

OPTOMETRIC SERVICES

Victorian College of Optometry Clinic 347 0233

Provides glasses and contact lenses. Eye examinations available
free for pensioners with Pensioner Health Benefits Card.
An appointment is necessary.

Royal Victorian Eye & Ear Hospital: 665 9666

32 Gisbourne Street, East Melbourne

Free service for pensioners with Pensioner Health Benefits Card.
8-10 months waiting list for glasses. Emergency treatment available.

ORGANISATIONS

A comprehensive current listing of local organisations is available for perusal at the Ringwood Croydon Advisory Service 870 3233 and at the Civic Centre 870 4311

PARENTS ANONYMOUS

For parents who are having difficulties with their children 654 4654 and fear they have abused or may abuse them. (crisis line) Office open 10.00 a.m. - 4.00 p.m. 654 4300 7.00 p.m. - 12.00 midnight, one to one counselling Discussion group Monday 12.00 noon - 2.00 p.m.

PARENTS WITHOUT PARTNERS

A self-help organisation for lone parents and their children 836 3211

PENSIONS

See Social Security Dept. (Ringwood) 41 Ringwood Street 871 2888

PLAYGROUPS

For information for local playgroups contact: (329 6277 Victorian Playgroup Association or (329 6464 See also Central Ringwood Community Centre and 870 2602 North Ringwood Playgroup Inc. 876 3421

POST OFFICES

Bedford, 93 Bedford Road	Map Ref: Q10	870 3798
Burnt Bridge, 434 Maroondah Highway	Map Ref: H14	870 5363
Heathmont, 153 Canterbury Road	Map Ref: V9	870 6192
Heathwood, 139 Wantirna Road	Map Ref: V5	870 6763
Ringwood, 15 Ringwood Street	Map Ref: P5	870 6900
Ringwood East, 50 Railway Avenue	Map Ref: Q10	870 6196
Ringwood Heights, 93 Loughnan Road	Map Ref: M3	870 1679
Ringwood North, 188 Warrandyte Road	Map Ref: G7	876 2412

PRE-SCHOOLS

Enrolments - enquiries about the Central Enrolment system should be directed to Mrs. Jan Hobday 879 4359

The Pre-school Advisor handles general enquiries about pre-schools and child development. She can be contacted at the C.S.V., 62 Charter Street, Ringwood. 879 3311

Ellie V. Pullin Pre-School Centre Tortise Drive, Ringwood North	Map Ref: C9	876 4251
Greenwood Park Pre-School Centre Greenwood Avenue, Ringwood	Map Ref: Q6	870 8881

Heathmont Baptist Pre-School Centre 78 Cuthbert Street, Heathmont	Map Ref: W8	729 5003
Heathmont Pre-School Centre 41 Viviani Crescent, Heathmont	Map Ref: V10	870 5581
Heathmont East Pre-School Centre Pleasant Drive, Heathmont	Map Ref: U13	729 4762
Maroondah Pre-School Centre 16 Evon Avenue, Ringwood East	Map Ref: K14	870 2874
Norwood Pre-School Centre Notlen Park, Warrandyte Road, Ringwood	Map Ref: L7	870 4360
Oban Pre-School Centre 6a Holyrood Crescent, North Ringwood	Map Ref: F11	876 3540
Pinemont Pre-School Centre 27 Hygeia Parade, Ringwood	Map Ref: M2	876 3582
Ringwood East Pre-School Centre 42 Dublin Road, East Ringwood	Map Ref: Q10	870 4291
Ringwood North Pre-School Centre 70 Lockhart Road, North Ringwood	Map Ref: H5	870 5418
Ringwood Uniting Church Pre-School Centre 2 Greenwood Avenue, Ringwood	Map Ref: Q6	870 1707
St. Andrews Pre-School Centre 6 Waterloo Street, Heathmont	Map Ref: W8	729 5030
Warrawong Day Care Kindergarten Grey Street, Ringwood East	Map Ref: M14	870 6020

PSYCHIATRIC SERVICES

See Mental Health

RED CROSS

Administration Office - Melbourne 619 9999

There are several local units involved in the following activities:

- First Aid Training
- Homebound Book Delivery Service
- Library Service within Maroondah Hospital
- Hospital Visiting
- Assisting with Blood Bank, Immunisations
- Disaster Relief
- Fundraising
- Transport

Contacts:	Ringwood	Mrs. Dot Whitehead	870 5405
	North Ringwood	Mrs. Maureen Richardson	876 3518
	East Ringwood	Mrs. Marnie Conn	870 7017
	Heathmont	Miss A. Mackie	729 4496
	Red Cross Shop, Melbourne Street, Ringwood		879 2793
	Loans of Home Nursing equipment		870 7017

RED CROSS TRANSPORT SERVICE

The Ringwood East Transport Unit transports people who are unable to use public transport to medical appointments at hospitals. One to two weeks notice and a doctor's referral are needed. Monday to Friday: 9.00 a.m. - 12 noon and 1.00 p.m. - 4.00 p.m.	870 5717
---	----------

RETIREMENT

Early Planning for Retirement Association Ringwood Branch Contact Mrs. V. McGregor, P.O. Box 56 Ringwood	876 1301
---	----------

RETURNED SERVICES LEAGUE

16 Station Street, Ringwood Map Ref: Q9	870 6604
---	----------

REVERSE GARBAGE TRUCK

Aldinga Hatchery, 22 Sherbrook Avenue, Ringwood	879 1264
Non profit resource centre. Collects and redistributes industrial waste as art and craft material. Materials are available to schools, kindergartens and general public.	
Clean scrap material wanted. Pick up arranged.	
Tuesday & Wednesday 10.00 a.m. to 5.00 p.m.	
Thursday & Friday 2.00 p.m. to 5.00 p.m.	

RINGWOOD CROYDON ADVISORY SERVICE

For general information, referrals to appropriate help if needed and a listening ear, contact Ringwood Office in Ringwood Square Shopping Centre Monday to Friday 9.30 a.m. to 4.00 p.m. Saturday 10.00 a.m. to 12.00 noon	870 3233
Croydon Office: 214 Mt. Dandenong Road, Croydon	725 7920
Monday to Friday 9.30 a.m. - 4.00 p.m.	
(THIS SERVICE IS FREE AND CONFIDENTIAL)	

RINGWOOD COMMUNITY DEVELOPMENT COMMITTEE

Aims to improve and co-ordinate services for the people of Ringwood.	
Advises the regional body on F.A.C.S. and other grants from State Government. Contacts:	
Cr. Lillian Rosewarne	870 3390
Mrs. Margaret McCleave	870 6574
Council's Community Support Officer	870 4311

SCHOOLS

Primary Schools

Eastwood Primary School Alexander Road, Ringwood East	Map Ref: Q13	870 6103
Heathmont Primary School Frances Street, Heathmont	Map Ref: U9	870 6098
Heathmont East Primary School Louis Street, Heathmont	Map Ref: V14	729 5439
Holy Spirit Parish School 120 Oban Road, North Ringwood	Map Ref: F6	876 1103
Kalinda Primary School Kalinda Road, Ringwood	Map Ref: E12	876 3289
Marlborough Primary School Hardy Crescent, Heathmont	Map Ref: X7	870 3468
Mullum Primary School Panfield Avenue, North Ringwood	Map Ref: J9	870 2120
Norwood Primary School Warrandyte Road, Ringwood	Map Ref: L6	(870 8535 (879 4015
Our Lady of Perpetual Help School Wilana Street, Ringwood	Map Ref: P7	870 7227
Ringwood Primary School Greenwood Avenue, Ringwood	Map Ref: R6	870 6047
Ringwood East Primary School Everard Road, Ringwood East	Map Ref: L11	870 6781
Ringwood Heights Primary School Aurum Crescent, Ringwood	Map Ref: L2	870 3050
Ringwood North Primary School Oban Road, North Ringwood	Map Ref: F6	876 3250
Southwood Primary School Maidstone Street, Ringwood	Map Ref: V4	870 4106
St. Francis De Sales School Bona Street, Ringwood East	Map Ref: O12	870 7801

Secondary Schools

Aquinas College Thomas Street, Ringwood	Map Ref: R7	870 3122
Heathmont Secondary College Waters Grove, Heathmont	Map Ref: X7	879 3111

Maroondah Secondary College Brentnall Road, Croydon	Map Ref: H15	870 4551
Norwood Secondary College Byron Street, Ringwood	Map Ref: J8	870 5399
Parkwood Secondary College Tortice Drive, North Ringwood	Map Ref: C9	876 1633
Ringwood High School Bedford Road, Ringwood	Map Ref: P9	870 2002
Ringwood Technical School Heathmont Road, Heathmont	Map Ref: S9	870 4555
Tintern Church of England Girls' Grammar School 90 Alexandra Road, Ringwood East	Map Ref: P14	879 4466
Yarra Valley Anglican School Kalinda Road, Ringwood	Map Ref: B14	876 1366

Special Schools and Remedial Centres

* Heatherwood School Cnr. Witt Street and Maroondah Highway, Mitcham		874 4928
* Croydon Special Development School Dixon Avenue, Croydon		725 4933
* "Irabina" Autistic Children's Association Eastern Centre 193 Bayswater Road, Bayswater		720 1118
* Yarra Valley Special Education Community Centre Kalinda Road, Ringwood		876 3241

TAFE Colleges - Advanced and Further Education

Outer East College of Technical and Further Education		881 8888
Providing certificate, advanced certificate, associate diplomas and apprenticeship courses, and also off campus (correspondence) courses. Business, hobby and personal development short courses available each term. The College has campuses in Wantirna, Croydon, Lilydale and Healesville.		

SCOUTS

A current listing is kept at the Civic Centre and by		870 4311
Ringwood Croydon Advisory Service		870 3233

SELF HELP GROUPS

For information and current contacts for a wide range of self-help groups, ring Collective of Self-Help Groups,		650 1488
Ross House, 247-251 Flinders Lane, Melbourne		650 1455
Tuesday to Friday 9.30 a.m. - 5.30 p.m.		

SENIOR CITIZENS' CENTRES

Ringwood Senior Citizens' Centre Clubrooms in Greenwood Avenue, Ringwood		870 1884
Ringwood East Senior Citizens' Centre Clubrooms in Laurence Grove, Ringwood East		870 0289
North Ringwood Senior Citizens' Centre Clubrooms at Norwood Reserve, Warrandyte Road, North Ringwood		879 2677

SERVICE CLUBS

A comprehensive current listing is kept at the Ringwood		870 3233
Croydon Advisory Service and by the Civic Centre		870 4311

SOCIAL SECURITY, COMMONWEALTH DEPARTMENT OF

25 Ringwood Street, Ringwood	Map Ref: P5	871 2888
Provides information about and processes all Social Security pensions, benefits and allowance payments for local residents. Limited social work service is available.		

SPORTING CLUBS

A current listing is kept at the Ringwood Croydon		870 3233
Advisory Service and by the Civic Centre		870 4311

SWIMMING POOL - RINGWOOD AQUATIC CENTRE

Jubilee Park, Reilly Street, Ringwood	Map Ref: T7	870 0519
---	-------------	----------

TELECOM AUSTRALIA

Provides information on all of Telecom's services Initial inquiries to be made to -		724 3311
--	--	----------

TENANTS

For bond and relocation assistance contact;		
— Ministry of Housing		879 5433
— Maroondah Accommodation Service		725 2188
For information and advice on tenancy problems contact:		
— Outer East Tenants Information Service		725 9152
— Tenants' Union (Monday - Friday 9.30 a.m. - 1.00 p.m.)		419 7774
For information on supplementary rent assistance contact:		
— Department of Social Security		871 2888

THEATRE GROUPS

A current listing is kept at:		
The Ringwood Croydon Advisory Service		870 3233
and by the Civic Centre		870 4311

TRANSPORT

For information on bus, train, and tram routes and timetables contact:

Transport Information Centre	610 5265
Monday to Saturday 7.30 a.m. - 8.30 p.m. Sundays 9.15 a.m. - 8.30 p.m.	
Rail - Ringwood Railway Station	610 5265
Taxis - Regal Taxi Service	810 0222

TOY LIBRARY

Every Friday 10.00 a.m. - 12.00 noon except School Holidays at North Ringwood Community House	876 3421
--	----------

TWINS

Twin Care Resources	725 1566
Australian Multiple Births Association	885 5300

UNEMPLOYMENT

D.O.M.E. - "Don't Overlook Mature Expertise"	882 4488
405 Camberwell Road, Camberwell A lobby and support group for unemployed people over 40.	

Ringwood Youth Services Skillshare	870 2401
227-229 Maroondah Highway, Ringwood (above All Tools) Map Ref: P7 Provides support and a variety of services for young unemployed people. These services include financial, legal, accommodation assistance and referral. Also run employment related programmes.	

For Example - Employment Skills Programmes
- Life Skill Activities
- Recreation Activities

Open normal business hours **except** Wednesday 1.00 p.m. to 5.00 p.m.

VOLUNTEERING

Eastern Volunteer Resource Centre

St. Pauls Parish House, Warrandyte Road,	Map Ref: O7	870 7822
Eastern Volunteer Resource Centre is a non-profit community service organisation. A register is maintained of community projects and individuals seeking volunteer help. People who are seeking voluntary involvement are invited to contact the Co-ordinator, Ms Elizabeth Harding, between 10.00 a.m. to 1.00 p.m. Mondays, Tuesdays Thursdays and Fridays.		

YOUTH ACCOMMODATION PROJECT (MAROONDAH)

Provides short term accommodation for homeless young people.

Secretary: Mr. Fred Stern	879 2675
Calls for accommodation must be directed to the regional service.	

YOUTH EMERGENCY ACCOMMODATION SERVICE

(Outer Eastern Region) Co-ordinator: Ms. Nan Morris	729 2022
A referral service which aims to assist homeless youth in this region	
"Stopover" (24 hours)	347 0822

YOUTH OUTREACH WORKER

Councils Youth Outreach Worker, Craig Dodgson, is available to assist
local young people in a variety of ways. Craig can be contacted
at 227-229 Maroondah Highway - upstairs above All Tools

879 2585

YOUTH CLUBS

A current listing is kept at the Ringwood Croydon	870 3233
Advisory Service and also by the Civic Centre	870 4311

EMERGENCY TELEPHONE NUMBERS

Emergency (Police, Fire, Ambulance)	000
Ambulance (24 hours)	11 440
Council	870 4311
(After Hours)	870 6636
Fire	11 441
Police	11 444
Ringwood Police	870 6377
Alcohol and Drug DIRECT line	614 1999
(counselling, information and referral service)	
Poisons Information	345 5678
Dental Emergency	347 0222
Maroondah Hospital	879 3333
Box Hill Hospital	895 3333
Life Line	662 1000
Personal Emergencies (24 hour Telephone Crisis, General Counselling and Referral Service)	347 6466
Water	614 3841
Gas	652 5111
S.E.C. (Ringwood) 24 Hours	870 2022
Environment Protection Authority (Pollution Complaints)	651 4444
Doctor (Please fill in)	