



Printed by Mornington Offset — 4/10 Bruce St. Mornington 3931 Tel: (059) 75 9313

2 FREE PASSES  
TO AQUATIC CENTRE

# RINGWOOD



## Info Card FOR YOUNG PEOPLE

YOUTH WORKER	878 4311
COMMUNITY	
IS HEALTH	879 3833
SERVICE	878 2198
WATER	728 2822
WATER	728 1537
RE	878 9635
MENT SERVICE	878 7044
	871 1888
	878 2401
INDUSTRY	877 5777
ORY SERVICE	868 1333
	878 3233
UNITY	725 7828
NETWORK	871 2888
	481 1488

1990



# 1991 COMMUNITY GUIDE



## CONTENTS COUNCIL SERVICES

After School Programme	20	Golf Course	14
Aged Services	17	Health and Environmental Services	35
Aquatic Centre	12	Home Maintenance Services	17
Aquatic Centre Bonus Vouchers	14	Home Help	52
Biological Wasp Control	35	Incinerators	31
Budget	10	Knaith Road Child Care Centre	21
Building Information	28	Library	24
By-Laws	25	Library Services Senior Citizens	18
Chief Executive's Message	8	Maternal and Child Health	21
Children's Services	20	Mayoral Message	1
Citizenship	24	Meals on Wheels	17
Civic Centre	This Page	Members of Parliament	40
Committees of Council	6	Parks and Gardens	26
Common Questions	39	Rates	10
Council Meeting Dates	6	Ringwood Convention Centre	15
Council Representatives	7	and Performing Arts Centre	15
Councillors	4	Ringwood District Centre	10
Dogs	25	Ringwood Festival	23
Emergency Telephone Numbers	67	Shopping Bus	48
Family Day Care	44	Town Planning	27
Fire Hazards	31	Works Depot	29
Garbage	32	Youth Worker	19

## LOCAL COMMUNITY SERVICES

Details regarding these services commence on page

### CIVIC CENTRE

The Civic Centre is located in Braeside Avenue, Ringwood, just near the Maroondah Highway (Map Reference L8).

**Office Hours** - Monday - 8.30 a.m. to 8.00 p.m. (4.30 p.m. January and late December)  
Tuesday to Friday - 8.30 a.m. to 4.30 p.m.  
Building Department closed 12 noon to 5 p.m.

**Telephone Enquiries** are received on 870 4311

**Fax No.** 879 3534

**Postal Address:** Post Office Box 156, Ringwood, 3134

DX 38068, Ringwood

## MAYORAL MESSAGE



Ringwood Council provides this updated Community Guide for 1991 to give information on services available in our municipality and contact points for government agencies and regional services which are available to residents of Ringwood. Keep this Guide in a handy place for future reference.

A more comprehensive listing of organisations within our municipality is regularly updated. Information from this list is available on 870 4311 or by calling at the Civic Centre, Braeside Avenue, Ringwood. Some of the organisations listed need and appreciate volunteers. If you have time and wish to help, please contact a particular organisation or the Council.

Over past years, Ringwood has been proud of volunteer services and today those services are even more necessary as the trend is to care for more people within the community rather than in institutional care. More of the aged are being cared for at home and patients of all ages are discharged from acute care hospitals as soon as possible.

Ringwood - a government designated District Centre - will change in the coming years. Residents can look forward to increased retail, office and entertainment facilities which will be progressively be developed. The Patterson Cheney and Billy Guyatt sites are two proposed developments. A plan showing Council's strategy for the District Centre is also available to view.

The Coles Myer - Eastland - redevelopment is planned to commence early in 1991. Future development in our City will provide employment during construction and following completion. We trust residents will take an interest in the progress towards better facilities for the community including in due course, a bigger and better library.

Dates of Council Meetings are on page 6. These meetings are open to the public as are Committee Meetings (except for confidential items). Councillors addresses and phone numbers are on pages 4 and 5. Please contact your Ward Councillors if the need arises. I invite you all to utilise the very extensive services of the Council.

I would like to wish you health and happiness during 1991.

Sincerely

COUNCILLOR BETTY MILTON  
Mayor



## RINGWOOD - WHERE IT ALL BEGAN

Earliest records show that Ringwood was identified as a district in 1862 when it was part of the Berwick District Road Board. In 1871 it was annexed to the Upper Yarra District Road Board, later proclaimed the Shire of Lilydale.

In 1869 antimony was discovered and mined until 1934 on the site of the present Civic Centre. Woodcutting was carried out in the surrounding districts, with another major industry being the brickworks and kiln. Ringwood was a major fruit growing district and orchards existed in the area, particularly in North Ringwood, up until about 1975.

Ringwood was severed from Lilydale in 1924 and became the Borough of Ringwood, a municipality in its own right. The population at that time was 2,000 residents in 600 dwellings.

Ringwood was proclaimed a City on 19th March 1960 by the then Governor of Victoria, His Excellency, General Sir Dallas Brooks.

A great deal of development has happened in Ringwood since it was declared a City, and it is a very urbanised area now. Ringwood has however, never lost its beauty, and is well known for its parks and gardens.

Situated in the outer eastern suburbs of Melbourne. It covers an area of 2,276 hectares (9 square miles) and has a population of 42,500.

The City is divided into three wards, North, South and East (see attached map) with three elected Councillors representing each of these three wards.

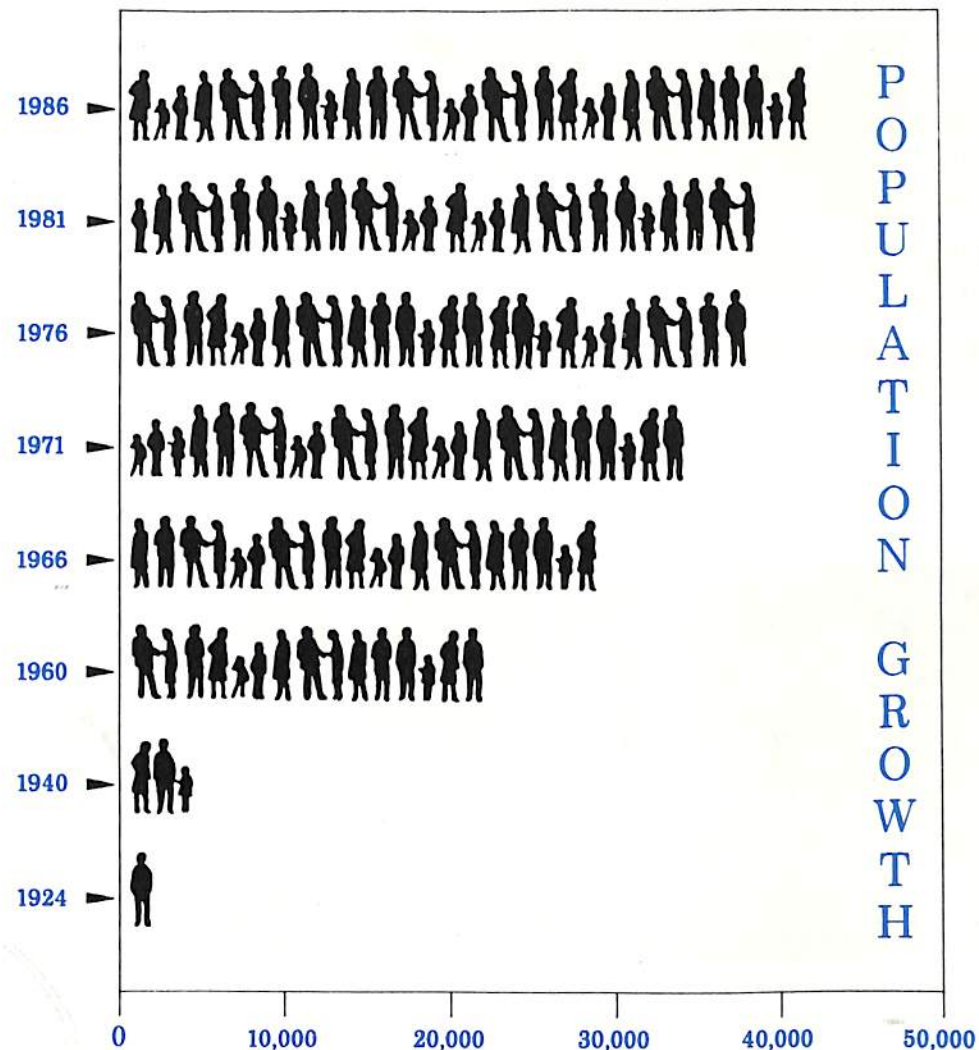
Ringwood has long been the regional centre of shopping in the outer eastern suburbs, providing a wide range of comparison and convenience shops. It is the most important regional centre in the Lilydale corridor, but this growth has not come without some problems including traffic congestion and unpleasant conditions for pedestrians.

In 1981 the State Government designated Ringwood as one of 14 District Centres. District Centres aim to combine retail, office and community facilities in locations that are generally well served by public and private transport. After central city Melbourne, they are the major retail/commercial centres in Melbourne.

Its designation as a District Centre will benefit both Ringwood and the surrounding area. It is estimated that some 5,000 additional jobs will either move into the area or be created in the office sector. This will have multiplier effects on Ringwood as these new workers will shop in the Centre.

The social and leisure needs of the community will also be improved by projects such as the Entertainment precinct which will broaden the range of public facilities available.

## HOW WE'VE GROWN!





## COUNCILLORS

If you are entitled to be on the Voters' Roll you can stand for Council and become a Councillor. The fundamental requirement to be a Councillor, is a willingness to serve your community and a preparedness for hard work.

As Councillors are not employees of the Council and have other employment, meetings are held in the evenings to allow them to participate. Councillors work closely with their residents and always welcome your contact so that they are aware of how you feel about various issues.

Elected for a three year term, a Councillor will participate in decision and policy making on many and varied issues during that time.

Ringwood has nine Councillors, from three wards and they appreciate knowing your opinion and encourage you to contact them.

### North Ward



Cr. Betty Milton (Mayor)  
3 Graeme Avenue  
North Ringwood  
870 4531  
Retires 1991



Cr. Neil MacDonald  
3 Reserve Road  
Ringwood  
870 8467  
Retires 1992



Cr. Robin Gardini  
24 Mullum Road  
Ringwood  
870 1126  
Retires 1993

### East Ward



Cr. Lillian Rosewarne  
3 Bellbird Court  
Ringwood  
870 3390  
Retires 1991



Cr. Margaret Cheevers  
3 Vista Court  
East Ringwood  
870 4784  
Retires 1992



Cr. Greg Adkins  
9 Kalinda Road, (P.O. Box 763)  
Ringwood  
879 1850  
Retires 1993

### South Ward



Cr. Michael Nardella  
177 Bedford Road  
Heathmont  
870 4852  
Retires 1991



Cr. Max Williams  
84 Maidstone Street  
Ringwood  
870 0358  
Retires 1992



Cr. Leo Dineen  
14 Allens Road  
Heathmont  
720 7200  
Retires 1993



## THE DECISION MAKING PROCESS

Council Meetings are held every four weeks and it is at these meetings that the decisions are made on various issues affecting the municipality.

As it is not always possible to discuss matters in great depth at Council Meetings there are three committees which deal with different areas of Council business, and meet in the weeks preceding the Council Meeting.

The Committees and their jurisdiction are -

**Physical Resources Committees** - Staff, Buildings and Planning  
Chairperson - Cr. Nardella.

**Community Services Committee** - Finance, Health, Legislative, Traffic, Lighting and Properties, Parks and Gardens, Community Support Services  
Chairperson - Cr. Cheevers.

**Policy and Resources Committee** - All policy and matters which may have wider ramifications than the other Committees  
Chairperson - Cr. Milton.

All Councillors are members of these Committees.

Unless a Committee has delegated power, it can only make recommendations to the full Council Meetings. The recommendations may be adopted, amended or totally rejected.

The Committee cycle, over a four week period, is -

FIRST WEEK - All Committees  
SECOND WEEK - Policy and Resources Committee  
THIRD WEEK - Council Meeting  
FOURTH WEEK - Special Meetings etc.

Council Meetings commence at 7.45 pm. and are held on a Monday. The Meeting dates for 1991 are -

February .....	11th
March .....	(Tuesday) 12th
April .....	8th
May .....	6th
June .....	3rd
July .....	1st
July .....	29th
August .....	26th
September .....	23rd
October .....	21st
November .....	18th
December .....	16th

All Council and Committee Meetings are open to the public. Matters deemed to be confidential by a Committee will be heard in private by the Committee.

Contact the Civic Centre on 870 4311 to obtain further information regarding the dates and times of Committee Meetings.

## COUNCIL REPRESENTATIVES 1990/91

Councillors in addition to their normal Council duties also actively participate in community organisations. A small cross-section of organisations and Council associated activities :-

**Aquatic Centre Sub-Committee**  
Crs. Adkins, Milton, Nardella, Rosewarne, Williams

**A. G. Lavis Pavilion Committee of Management**  
Cr. Dineen

**Frail Aged Committee of "Lionsbrae"**  
Crs. Adkins and Gardini

**Central Ringwood Community Centre**  
Cr. Milton (substitute Cr. Nardella)

**Outer Eastern Municipalities Association**  
Cr. Rosewarne (substitute Cr. Cheevers)

**Ringwood Community Garden Co-operative**  
Cr. MacDonald (substitute Cr. Dineen)

**Ringwood Historical Research Group**  
Cr. MacDonald (substitute Cr. Cheevers)

**Ringwood Secondary College Council**  
Cr. Williams

**Maroondah Social and Community Health Centre**  
Cr. Cheevers

**Ringwood Festival Organising Committee**  
Cr. Nardella and Cr. Gardini

**Senior Citizens Consultative Committee**  
Crs. Cheevers, Nardella and Milton

**Melbourne and Metropolitan Board of Works - Eastern Area Commission**  
Cr. Dineen

**Youth Accommodation Project (Maroondah)**  
Cr. Williams

**Communications Strategy Committee**  
Cr. Adkins, Cheevers, Dineen, Gardini and MacDonald

**Warrawong Day Care Centre**  
Cr. Rosewarne (substitute Cr. Cheevers)



## CHALLENGES AHEAD FOR RINGWOOD

As with other Local Governments, Ringwood is facing significant financial constraints, exacerbated by the reduction of both State and Federal Government subsidies.

A significant portion of Council's revenue comes from allocations from Federal and State Governments - some for specific services and other as a proportion of personal income tax.

The State Government during the last few years has emphasised the importance of using existing public infrastructure - energy, water, transport, drainage etc., to its maximum, and has required all councils to pursue policies of urban consolidation. Whilst councils, including the City of Ringwood, embrace the need for urban consolidation, there is concern that Council lacks the ability to ensure that all developments such as dual occupancy are carried out appropriately.

The City of Ringwood is responsible for the implementation of the Metropolitan District Centre Strategy within its own commercial centre. The overall consolidation of retail and commercial activities into six outer strategic centres will see the Ringwood Centre develop substantially. Not only will this provide significantly enhanced services to the Ringwood community and its surrounding region, but opportunities for employment thereby reducing demands on transport and road systems as residents commute to the CBD.

Council welcomes the challenges that the District Centre Strategy offers, and is particularly keen to see developments such as the Coles Myer extension to Eastland and major office buildings occur during 1991.

As part of the Council's ongoing effectiveness and efficiency reviews, long term financial planning strategies will be reviewed and a number of services identified for opportunities to enhance effectiveness and reduce costs.

In allocating its resources, Council wants to maintain services at a high level, but in doing so ensure that they are still accessible and don't become too great a cost burden on the general community. Low risk strategies to develop income from sources other than rates and user charges are being investigated. Councils financial strategy provides it with the capacity to take up these opportunities as and when they arise.

During the year further fine tuning of a range of services will occur, and Council's concern with quality will be emphasised.

Although 1991 will be a difficult year, Council and its high calibre staff will continue to provide its quality services at minimum cost to its community.

**JOHN PAECH**  
Chief Executive.

## RINGWOOD - THE ORGANISATION

The City of Ringwood has adopted a corporate approach for the management of the organisation.



*L-R. Gordon McCulloch, Bill Black, John Paech and Graham Hayden.*

John Paech, the Chief Executive, is responsible to the Council for the operation of the City, and there are three divisions each headed by a Director who is also a member of the management team.

### **CORPORATE SERVICES:**

Bill Black, Director Corporate Services

The division encompasses:

Administration, Community Services, Health, Library Services, Civic and Ceremonial, and Traffic and By-laws functions.

### **FINANCE:**

Gordon McCulloch, Director Finance

The division encompasses:

Accounting, Convention Centre, Information Systems, Rates and Valuations.

### **TECHNICAL SERVICES:**

Graham Hatden, Director Technical Services

This division encompasses:

Aquatic Centre, Building, Design and Investigation, Parks and Gardens, Town Planning, Traffic Engineering and Works.

Should you ever have any queries regarding the areas listed above please call the Council on 870 4311 and ask for the appropriate department.



## RINGWOOD DISTRICT CENTRE

The Ringwood Commercial Centre running north/south between the railway line and the Mullum Creek from the Coach and Horses Hotel to the west, to Mount Dandenong Road on the east, has been identified for major redevelopment.

The State Government's consolidation strategy for retail and commercial business activities will ensure that the outer eastern area focuses significant redevelopment in Ringwood.

Council's strategy for redevelopment embraces a number of principles including traffic management, pedestrianisation, entertainment areas and consolidation of the existing major retailers.

Council will work closely with the Department of Planning and Urban Growth and potential developers to ensure that the changes being made to the Centre are in the long term interests of the residents of Ringwood, and the region generally.

Opportunities for employment will be substantial, and Council is firmly of the view that the redevelopment will greatly enhance the lifestyle of Ringwood residents.

## BUDGET

Council's 1990/91 Budget provides for expenditure of \$25,076,000 including new loan funds of \$831,200.

The most significant aspect of this year's Budget is the introduction of a separate Garbage and Recycling Charge. Council considered that with the significant cost for the collection and disposal of household waste and recyclables, this cost should be reflected in a separate charge to ratepayers.

The cost of this service has risen by 47% in 1990/91 compared with 1989/90. Council proposes to phase in the total cost of providing this service over a number of years. The charge for 1990/91 has been set at \$21.20 per tenement.

## RATES

By now all ratepayers will have received their rate notice for the current year - (1 October 1990 - 30 September 1991).

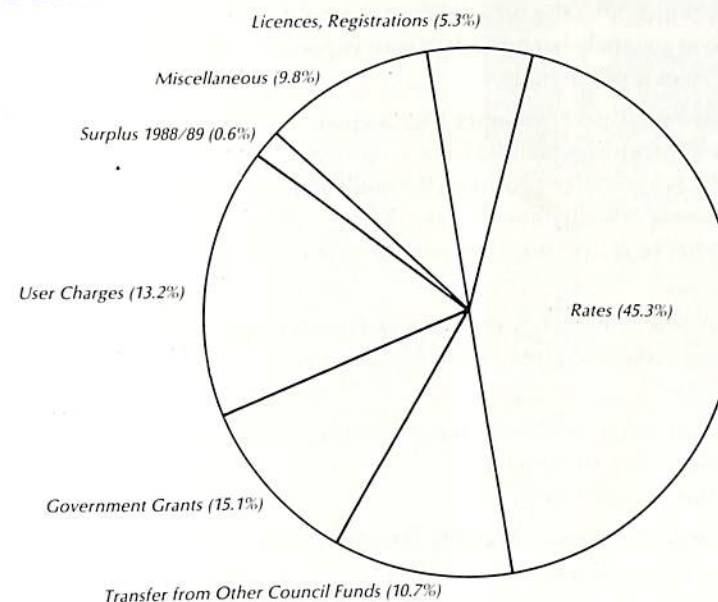
Ratepayers wishing to pay by instalments are reminded that to be eligible the first instalment must be paid by 31st December 1990. Notices for the February, May and August instalments will be forwarded together in January.

If paying in a lump sum, payment should be received at the Civic Centre by 10th April 1991.

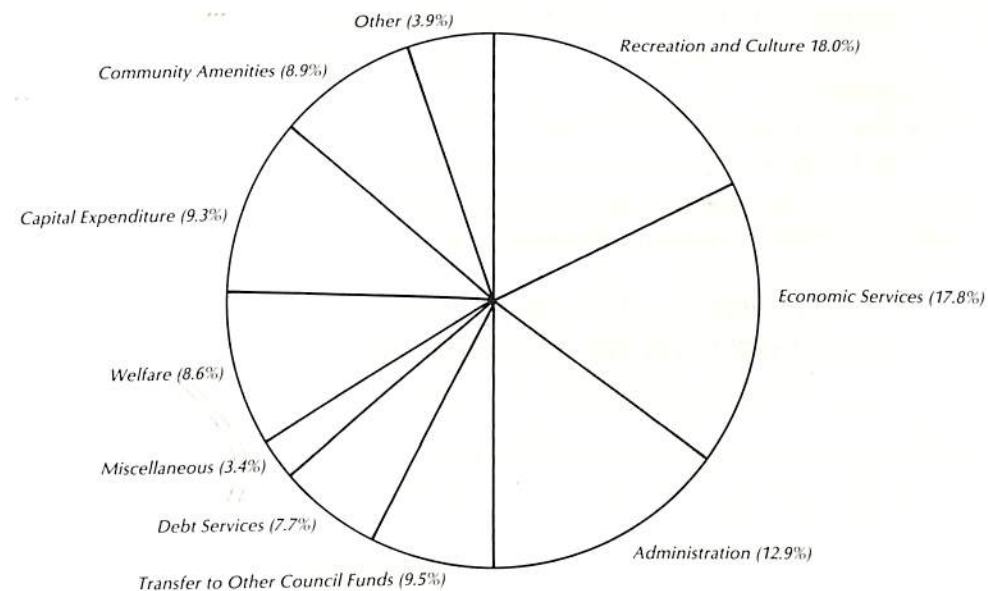
All rate payments received after the relevant dates will attract interest at the rate of 20% p.a. from the date the rate was due - i.e. 15 November 1990 to date of payment.

Payment of rates can be made either direct to the Civic Centre or paid into any bank throughout Australia by using the deposit slip attached to the rate notice. Payments are free of charge if paid through the ANZ Bank, however, other banks may charge.

## INCOME



## EXPENDITURE





## EMERGENCY MANAGEMENT PLAN

Emergencies are hard to plan for. The only definite thing about emergencies is that every one is different and they generally happen when least expected. Therefore it is difficult to provide hard and fast rules on what to do.

Council adopted a new Municipal Emergency Management Plan in September 1990. The purpose of the Plan is to provide guidelines for actions to occur should there be an emergency. It also acts as a resource providing information for those involved in managing responses during any emergency. Evacuation points are identified in the plan and should they be required residents will be notified of the appropriate evacuation centre.

During the early stages of an emergency everyone will be seeking information. The best advice is to **turn on your radio** and listen for information which Police will provide to all media as fast as possible.

Police will attempt to notify non-English speaking members of the community, however, all residents should take some responsibility for looking after neighbours who may be elderly, sick or who do not speak English.

You may hear the **Standard Emergency Warning Signal** played over the radio or television. This signal **does not mean to evacuate**. The signal is used to precede an official message from the Police Displan Co-Ordinator - listen carefully as the message will include instructions on what is happening and what you should do -

### What to do in an Emergency

- Do not use phones unless urgent, you may prevent emergency services relaying important messages or urgency calls from disaster victims
  - Do not go "sightseeing" - you may put yourself in danger and hinder emergency services.
  - Turn on radios and obey instructions provided by emergency services.
- (Note - Remember to keep batteries for radio).

Further information about what you can do in an emergency can be obtained from Council's Technical Services or Corporate Services Department.

## RINGWOOD AND THE COMMUNITY FACILITIES TO MAKE LIFE MORE ENJOYABLE!

### AQUATIC CENTRE

With so many high-quality recreation facilities in Ringwood it is hard to single out just one. However, the Ringwood Aquatic Centre would feature on most residents' lists of known and "worth a visit" facilities.

At the Aquatic Centre we have always taken pride in our ability to look after our community, from casual visitors to specialist clubs and groups. Last year, almost 480,000



people showed by their patronage that our world-class centre is still meeting their needs.

They came as individuals to train or swim for health and pleasure, as families, school and club groups to take advantage of Centre's clean water, Olympic sized spaciousness, variety of programmes and of course the additional drawcard of the spa, sauna, diving and toddlers' pools.

The Aquatic Centre is constantly looking ahead to new initiatives to boost its services. A recent introduction is the provision of midday swimming lessons for adults. A number of enthusiasts are already taking advantage of these lessons.

Also recently introduced is the discounted Family Pass, available any time which allows families of two adults and two children or one adult and up to four children to use the Centre as a group and save money at the same time. This is already proving very popular.

Before the end of 1990 the Centre will be operating a Frequent Visitors Club. For \$25 membership, you get a 50% discount on a swim and spa, swim or sauna or swim, spa and sauna, plus a discount on items purchased at the reception desk. Associate membership for others in the member's household will also be available.

It all goes to show that you can't beat Ringwood Aquatic Centre for all year round fun and fitness for everyone in the community.

A full list of fees and charges is available from the Aquatic Centre. Telephone the Centre for information on any of the available programmes on 870 0519 or 879 5319 during pool opening hours.





**BONUS  
ENTRY  
VOUCHER  
ONE FREE ENTRY  
with one paid entry**

**VALID TO JUNE 30th, 1991**  
One full adult entry or two  
children with each adult entry.



**BONUS  
ENTRY  
VOUCHER  
ONE FREE ENTRY  
with one paid entry**

**VALID TO JUNE 30th, 1991**  
One full adult entry or two  
children with each adult entry.

## GOLF COURSE

The Ringwood Golf Course, situated in Canterbury Road near Wantirna Road, caters for some 98,000 golfers each year, which makes it one of the most popular courses in the metropolitan area.

Under the direction of the Curator, Mr. Mark Schmutter, the six permanent staff members are responsible for the care and maintenance of this highly developed turf facility. This challenging work includes irrigation, spraying, turf management, drainage works and maintenance and construction of golfing furniture and equipment.

The budget for 1990/91 is -

● Income	\$530,000
● Expenditure	
● Maintenance	\$406,100
● Development	\$ 88,000

The Golf Course Management Committee, which comprises four Councillors and five Officers, is responsible for the management of the Course. Its policy has been to return any profits in excess of the annual maintenance budget to a fund which is used for ongoing development of the Course. One of the major projects to be funded in this way in the near future is the replacement of the piped irrigation system, which will cost approximately \$600,000 to \$700,000.

Major projects for this year include -

- (i) improvements to sand trap maintenance;
- (ii) improved machinery for green renovation;
- (iii) fairway drainage improvements
- (iv) Improved chemical spraying and fertilisation of fairways.



*The Golf Professional Peter Harvey*

## THE RINGWOOD CONVENTION AND PERFORMING ARTS CENTRE

The Convention Centre comprises function rooms and the Karralika Theatre. The Centre's design makes it extremely versatile in its usage. The three main function rooms are able to be organised to cater from 50 people to 750 people. The Centre is run to a very high standard and is one of only a few Council owned Centres which provides all its own in-house catering and services.

It is a popular choice for wedding receptions with over 60 couples per year taking advantage of the facilities and catering service and the beautiful grounds. Many thousands of other people attend a vast array of meetings including conventions, Debutante balls, school functions, Council meetings, political and government meetings, dinner dances, sports nights, presentations, product launches, quests, pageants, fund raising functions, trade displays, antique and gardens shows, 21st birthdays, anniversaries and retirement dinners.

The Karralika Theatre is one of the most modern and well equipped outside central Melbourne. It seats 433 people and aims to provide first class entertainment and facilities for the company's use at the most economical charges. We also have the Karrlika Bar for the convenience of the clients and of course a fully stocked kiosk is available at all performances. Much of the theatre's use is by local community groups such as theatre companies, schools, ballet and callisthenic groups, the local arts councils and local musicians. In the school holidays in particular it put on programmes to cater for children and attract them to the theatre.





## RINGWOOD AND THE COMMUNITY

The Community Services Department provides an extensive range of services to meet the needs of citizens. The provision of advice, referral and programmes is targeted at increasing the quality of life for those in need in Ringwood. Community Services includes aged and disabled, family and children and youth services.

### AGED AND DISABLED SERVICES

The City of Ringwood provides a range of services designed to assist in the support of frail, aged and disabled persons within their home environment.

Services are designed to encourage and maximise independence plus enhance the clients' quality of life.

Staff are available to assist individuals in identification of needs and to lend support on all issues relating to their needs and care.

### WHAT ARE THE SERVICES

#### HOME HELP

This is available to aged, disabled or chronically ill people to help them cope in their own home. It is also available for short term periods to families whose functioning is interrupted by sickness or confinement. Home Helpers can assist with washing, ironing, shopping, vacuuming and general cleaning.

For further information contact :- Home Help Supervisor - Phone 870 4311.

#### SPECIFIC SERVICES

This is a child/adult minding service designed to provide relief for the prime carer of a disabled person through the support of caring staff.

For further information contact :- Home Help Supervisor - Phone 870 4311.

#### HOME MAINTENANCE

This service provides assistance with minor repairs and maintenance within the clients home. Cleaning of spouts, changing tap washers and the installation of handrails, grips and ramps are an example of the type of works that may be available to frail, aged and disabled members of our community.

For further information contact :- Home Help Supervisor - Phone 870 4311.

#### MEALS ON WHEELS

This service provides a hot midday meal, Monday to Friday to those who are unable to shop or cook for themselves. Special Diets can be catered for.

For further information contact :- Meals on Wheels Supervisor - Phone 870 6757.





### SENIOR CITIZENS CENTRE

Ringwood has three very viable centres which provide a wide range of activities. Meals are available at both Ringwood and East Ringwood Centres. Those wishing to dine must contact the Club and register the previous day.

Hairdresser and Podiatry are also available at each centre. Podiatry is offered at a greatly reduced fee to those on full pension and in receipt of a Pensioner Health Care Card.

The North Ringwood Centre is also the venue for the "Third Age Ringwood", which offers a wide variety of stimulating classes each morning.

For further information contact:

Ringwood Senior Citizens Centre	870 1884
Ringwood East Senior Citizens Centre	870 0289
Ringwood North Senior Citizens Centre	879 2677

### PODIATRY (Chiroprody)

Available to all Ringwood elderly who hold a Health Benefits Card. Available on a sessional basis, at each Senior Citizens Centre by appointment.

### SHOPPING BUS SERVICE

Fortnightly shopping trips to Eastland, involves picking up elderly disabled from their own home and allowing them shopping time before returning home again.

Councils' mini bus is used for these trips. The service is free.

For further information contact:

Community Services Officer for Aged and Disabled -Phone 870 4311.

### LIBRARY SERVICES

This is a free service to frail elderly Ringwood residents. Volunteer drivers transport people to and from the library, where they exchange books and enjoy morning tea which is prepared by the Red Cross.

This service is available on alternate Fridays.

For further information contact:

Community Services Officer for Aged and Disabled - Phone 870 4311.

### OFFICER FOR THE AGED AND DISABLED

This person is available to give assistance on a whole range of issues, including housing enquiries, information on day care activities, nursing homes and all welfare concerns. Where age or disability prevents access to the officer, a home visit can be arranged to help sort out problems. You are invited to contact Councils' Home Care Staff to discuss any issue which may be of concern to you.

For further information contact:

Community Services Officer for Aged and Disabled - Phone 870 4311.

### TELECROSS

This telephone support service is provided by Red Cross. The aim is to make regular telephone contact at prearranged times with frail, disabled or isolated residents who are at risk due to lack of contact by family or friends.

Contact: Betty Beggs - 870 6993

Aileen Timms - 729 8431

### ACTIVITY CENTRES FOR OLDER PEOPLE

There are a number of Community based centres in the municipality that provide activities specifically suited to older people. Transport may be arranged to the majority of venues if necessary.

A list of such activity groups may be obtained on application to the - Community Services Officer for the Aged and Disabled on 870 4311.

### YOUTH SERVICES

The Youth Services section works with and on behalf of voluntary youth groups, youth service providers and young people. Our aim is to ensure that the development of youth services in the municipality responds to the needs and issues identified by these groups.

The section will provide support, referral and information service. A range of youth programmes is provided by the section.

Contact: Youth Worker, Ringwood Council Offices on 870 4311.

### YOUTH PROGRAMMES

Teenage Holiday Programme

Youth Information Service

Youth Service Providers Working Group

Youth Forum

Camping Equipment Pool

### GOOD NEIGHBOURHOOD PROGRAMME — RINGWOOD

A community-based programme which aims to reduce youth crime in the Ringwood municipality. This is addressed by analysing local problems and developing suitable programmes in response.

The community committee established to oversee the programme is made up of local residents, young people, the Office of Corrections, Community Services Victoria, Skillshare, Maroondah Social and Community Health and the City of Ringwood.

A committee of local residents, young people and service providers responding to issues related to juvenile crime in the municipality.

Contact: Youth Worker on 870 4311.



### RINGWOOD CAMPING EQUIPMENT POOL

Provides a range of equipment for base camping and lightweight mobile camping/bushwalking. Bond and hire charges required.

Contact: Youth Worker on 870 4311.



*Christine Brooks, Youth Worker explaining Youth Card to two residents.*

### FAMILY AND CHILDREN'S SERVICES

The health and well-being of all families in the Ringwood community are Council's concern. We recognise that our community's future rests with today's children. Our services and the policies behind them are based on this belief. Council provides various programmes to help families with children from birth, through pre-school years, school days and holidays and into young adulthood. Through family day care schemes, child care centres, after-school care and holiday programmes, Council supports families in looking after their children and gives parents options in their choice of quality care.

#### AFTER SCHOOL CARE AND ACTIVITIES

After School Care Programmes are available to all families with children attending primary schools in Ringwood. Children may be transported by mini-bus from some schools to the programmes. Care programmes are also conducted at some schools on curriculum days and early finish days. Fee relief is available at all programmes.

Council organises an After School Care Programme at Norwood Primary School, Warrandyte Road, Ringwood, every school day from 3.30 - 6 pm. during term time. Children are involved in a broad range of activities under the care and supervision of experienced staff.

Contact: Co-ordinator on 870 5521 during programme hours or Community Support Officer on 870 4311

### MATERNAL AND CHILD HEALTH SERVICE

This free service is provided by four nurses qualified in General, Midwifery and Maternal and Child Health who manage six Centres in the Municipality.

The health and well-being of all children is of enormous importance for the future of society. The service helps to set parents on the right road, provide an early warning system for possible health problems and take some of the anxiety out of coping with a new baby.

The nurses monitor children's growth and development up to six years and give residents information and advice on the health of both mothers and children. Immunisation programmes, hearing and vision checks are arranged for each child, and, if necessary, referrals to specialists and other community health and support services.

The Centres also have an educational role. Parents can learn individually and in groups about a wide range of child-related concerns such as infant and toddler feeding, child behaviour and temperament, and how they can best deal with special concerns such as night waking, toilet training, sibling rivalry, discipline, aggression, food faddism and meal-time battles.

New mothers already living in Ringwood are contacted by the Maternal and Child Health nurses soon after coming home from hospital. If you have moved into the area we invite you to visit and enrol at the Maternal and Child Health Centre nearest to you.

These Centres are located at:-

Heathmont	Viviani Crescent		870 6480
Ringwood	Miles Avenue	No. 1	870 6478
		No. 2	870 4777
Ringwood East	Laurence Grove		870 6479
Ringwood North	Oban Road	No. 1	876 3307
		No. 2	876 4413

#### BABY RESTRAINT HIRE SCHEME

Road safety regulations require infants under the age of one year to be carried in an approved safety harness when travelling in most vehicles in Victoria. Parents who attend Maternal and Child Health Centres in Ringwood can hire baby safety restraints for six months after birth.

Further details obtainable at the Maternal and Child Health Centres.

Contact: Brenda Driscoll between 3.40 pm. - 5 pm. Tuesday to Friday - 876 3346

Rates: Deposit \$40 (Returnable if capsule returned in good condition). Hire and maintenance charge \$22.

#### CHILD CARE CENTRE

Council sponsors a Child Care Centre in Knaith Road, East Ringwood. Fees are subsidised according to means.

Contact: Judy Byrne - 870 6966



### COMMUNITY SUPPORT OFFICER

Council Community Support Officer is available to provide a wide range of information and assistance to individuals and groups in the City. The Community Support Officer encourages residents to participate in community affairs and works with residents on projects to meet community needs.

Contact: Community Support Officer on 870 4311.

### FAMILY DAY CARE SERVICE

This service caters for parents living and/or working in the municipality. Up to 4 pre-school children are catered for in selected caregivers homes, school-age children before and after school.

Please ask the Family Day Care Co-ordinator about reduced fees based on income.

Contact: Family Day Care Co-ordinator on 870 4311.

### HOLIDAY CARE PROGRAMMES

Care programmes are organised by Council every school holiday period. Children have the opportunity to enjoy a wide variety of activities with care and supervision from 8 am. -6 pm. Enrolments are necessary at the Council offices before the holiday starts.

### HOLIDAY ACTIVITY PROGRAMMES

Holiday Activity Programmes are organised at the Ringwood Library and North Ringwood Community House.

Further information on these activities by contacting the Community Support Officer on 870 4311.

## COMMUNITY CELEBRATIONS

Community involvement is very important to Council, but apart from the provision of Community Services and the many parks and gardens and facilities available, there is also the need for the community to celebrate their achievements, and have fun.

### HIGHLAND CARNIVAL

On 24th March 1991 the 25th Annual Highland Carnival will be held at Jubilee Park, Ringwood.

Even if you haven't any links to Scotland you will enjoy this day. There are rides for the children, all types of stalls, and you may even trace your family name. There will be plenty of entertainment and activity with the following championships being held on the day:-

Victorian Pipe Bands Championship;  
Victorian Scottish Heavy Games Championship;  
Victorian Axemen's Championship; and  
Australian and Commonwealth Highland Dancing Championship.

So come along and enjoy the spectacle!



## RINGWOOD FESTIVAL



*Rainbow the Clown and friends at Ringwood Lake, a great place for Family Fun Day.*

The Ringwood Festival is when Ringwood gets together to have fun, be entertained and participate in new activities.

An annual event, it is broken into three components; theatre entertainment, community displays and a family fun day.

In 1991 the events will be -

Community Displays at Eastland Shopping Centre  
Family Fun Day  
Theatre Entertainment

12th March to 17th March  
17th March  
18th March to 24th March

Make sure you visit the Community displays at Eastland to see just what activities are happening in Ringwood, who knows you may decide to get involved yourself and have your work on display with your new group and friends in 1992!

Family Fun Day sees Ringwood come alive, with free rides for children at the Ringwood Lake, clowns, dancers and performers in the sound shell, plenty of food and fun. What a great way to spend a Sunday with the family! You can get on a free bus at Ringwood Lake and go down to the shopping centres where all sorts of fun is also happening then catch the bus back to the Lake!



## RINGWOOD LIBRARY

Anyone can join the library and membership is free. Just complete an application form, produce identification of name and address and you're a member!

Members of the Ringwood Library may also borrow from any branch of Eastern Libraries. Branches are located at Croydon, Knox, Boronia, Ferntree Gully, Rowville, Sherbrooke and Healesville. Mobile libraries operate in Healesville, Knox, Sherbrooke and Upper Yarra.

### Location

28 Warrandyte Road, Ringwood.  
Telephone: 870 0177

### Open

Monday to Friday: 1.00 am. - 9.00 pm.  
Saturday: 10.00 am. - 5.00 pm.

You can borrow books, magazines, cassettes, jigsaw puzzles and videos. Special books and cassettes are available for print-handicapped people. A wide range of other services is available and it's all **free!** Want to know more? The staff at the Library will be happy to help you.

## AUSTRALIAN CITIZENSHIP

Application forms for Australian Citizenship are only obtainable from the Department of Immigration and Ethnic Affairs, telephone 662 2011 or 612 3939.

Council conducts the ceremony when Citizenship is granted. One major ceremony is held at the Convention Centre in January close to Australia Day and smaller ceremonies are held at Council Meetings when required. In 1990 close to 300 Ringwood residents became Australian Citizens!

## RULES TO PROTECT YOU



George Lowrie, By-Laws Officer and Maxine.

There is a pleasant side to every job, and Council's By-laws officers are no exception. The lovely dog pictured opposite dubbed Maxine by staff at Council, was found wandering the streets by By-laws Officer, George Lowrie. It was soon discovered that she was very pregnant and the By-laws Officers cared for her and her beautiful pups until homes could be found for all.

Picking up stray animals is one of many tasks that Council's By-laws Officers perform which help the community.

## DOG REGISTRATION

All dogs must be registered, once over six months of age, and you can be fined if your pet is found wandering. This restriction is to ensure that people can walk the streets unhindered by stray animals, and should your pet get lost, its registration tag will allow Council to identify the pet which means it can soon be home with you again.

## COUNCIL'S TRAFFIC OFFICERS

Council's Traffic Officers are constantly on patrol throughout Ringwood. Receiving a parking ticket is unpleasant but parking rules are made for the safety of all. Blocking clearways plus dangerous and illegal parking near schools are bad practices which put other motorists and children at risk. Time limits on parking are designed to ensure that everyone has the opportunity to gain access to facilities, and that the parking spaces specified for shorter times are not monopolised.

## SCHOOL CROSSING SUPERVISORS

Everyone knows the school crossing supervisor or "lollypop person" as they are affectionately known. These people make sure our children make their way safely across roads on their journey to and from school.

## LOCAL LAWS

Council has the power to make Local Laws, they used to be called By-Laws, to control and protect the amenity of our community. Local Laws are not designed to be unduly restrictive but to set in place guidelines aimed at making Ringwood a pleasant place to live and work.

Local Laws and By-Laws cover many areas, including incinerators, the Golf Course, the keeping of dogs and cats, the Aquatic Centre, and the riding of horses on reserves and footways to name a few.

If you require any further information please contact the Traffic and By-Laws Department on 870 4311.



## RINGWOOD AND THE ENVIRONMENT PARKS AND GARDENS

Ringwood today is a modern vibrant municipality developing into the 21st Century. The City attracts a constant flow of new residents and has a large stable population base. Even though Ringwood provides excellent services and very good shopping facilities, but it is our environment and wonderful treescape which Ringwood is known for.

If you look over Ringwood from one of the many high vantage points it is not houses and roofs you can see, but a green canopy spreading right over the municipality, creating an environment that is unique in Melbourne.

Our tree streetscapes is one of our most important assets, the Council spends over \$200,000 a year on the pruning and shaping of our street trees to keep them healthy for everyone to enjoy and to stop them interfering with overhead and underground services.

Within our parks and open space all the trees planted in most cases are indigenous to the Ringwood area and over the last ten years Council staff have planted over 100,000 trees in the 250 hectares of Council controlled open space.

Our policy is to encourage tree planting and during the 1990 planting season, over 14,000 trees were given to our schools and local residents to plant and the Council planted 6,000 trees within various reserves.

### WORKS FOR 1991:

Playground Development  
Pump Reserve Walking Paths

McAlpin Reserve Development  
Upgrading Manson Reserve - No. 2 Oval  
Distribution of plants to schools and public.



## TOWN PLANNING

Town Planning is concerned with controlling the use and development of all land and buildings within the municipality in such a manner that the amenity of the area is enhanced where possible or at least not significantly reduced by the particular use or development. Control is obtained through Planning Schemes which are designed to provide a balanced approach to development.

The City of Ringwood Planning Scheme and Council Guidelines provide the necessary control and direction in dealing with applications for development within Ringwood.

Council's Town Planning Department is responsible for ensuring that development takes place in accordance with the Planning Scheme and Council Guidelines. The Department provides advice and recommendations to Council for a wide range of planning-related matters, including rezoning applications, development applications, planning legislation, the development of planning policies and Planning Scheme amendments.

The Planning Department receives over 200 applications a year for a variety of residential and commercial development. In 1990, twenty-two appeals were lodged with the Administrative Appeals Tribunal appealing against decisions made by Council in dealing with planning matters.

Council's Planning Officers are in constant demand to provide information and advice to the community on a number of planning issues with over 200 enquires being received per week.



Nick Easy, Assistant Town Planner and Amanda Detering Administration Officer viewing a model of an application.



## DESIGN AND INVESTIGATION

The Design and Investigation Department of the Council provides a direct service to many rate payer and public inquiries. The department holds many of the records for locating details of council roads, drains and other assets. As well, the engineering aspects of development proposals for the municipality are checked for compliance with Council requirements.

Designs for all new engineering works are prepared in-house by the staff using modern microcomputer equipment. In preparing such designs or investigating problems within the municipality, the staff regularly liaise with other service authorities.

Many proposals for new or upgraded Council facilities are subject to feasibility studies carried out by the department. Such studies include the recently prepared Strategic Bike Plan for the municipality and studies for the neighbourhood shopping centres.

During 1990, Mr. D. Phillips of Swinburne Institute of Technology worked with department staff in preparing guidelines for the drainage site detention systems for multi-unit developments within the city. Such systems protect the extensive drainage system throughout the municipality.

It is often the small details of the municipality which enable the acceptable lifestyle of the community to carry on. Such items as street lights, properly functioning drains and safe street design have input from the Design and Investigation Department.

At all times the Design and Investigating Department of Council endeavours to provide a high-quality service to the users of Council facilities.

## BUILDING DEPARTMENT

Building Regulations are constantly being reviewed and changed to keep pace with new developments in technology. 1991 will see the introduction of the "Building Code of Australia" a new nationwide code to standardise regulations in all states, plus a number of changes to the Victorian Building Regulations which could affect builders of new homes and additions.

Building approval is required for any work on or in connection with the construction, demolition or removal of any building, with the exception of outbuildings which are smaller than 6 square metres in area, pools which contain less than 15,000 litres of water and some fences.

Applications for building approval should be lodged with Councils' Development Co-ordinator, located in the Building Department at the Civic Centre.

Building Department staff are available to provide advice and information on regulations and procedures in applying for approvals, also for carrying out inspections on buildings under construction.

If you are planning any building works in connection with your house, Building Department staff would be pleased to discuss your ideas and to assist you in getting started.



*Building Department Officers  
L-R. Paul Milner, Jeff Van Hoven and Chris Robertson inspect a plan.*

## WORKS DEPARTMENT

The Works Department is responsible for the maintenance and construction of Council facilities such as roads, footpaths, drainage, assistance with the upkeep of Council buildings and servicing of public litter bins and public toilets. Works Department is also responsible for purchasing and maintaining Council's plant and equipment. It has a staff of 47 who mainly work from the Depot in Maroondah Highway opposite Mines Road. Total expenditure for the Department for 1990/91 is approximately \$5,000,000.

Major projects for the coming year include the following -

- (1) **ROADWORKS**
- (2) **CONCRETE WORKS**
- (3) **RESURFACING**
- (4) **DRAINAGE**
- (5) **WORKSHOP**

## DANDENONG CREEK COMMUNITY CONSULTATIVE COMMITTEE

In 1979, a report entitled "Dandenong Creek Valley Open Space Master Plan" was prepared for the Dandenong Valley Authority, City of Ringwood and City of Knox. This report outlined a number of projects that could be undertaken to develop the Dandenong Creek environs. Several of these have been implemented including the bike path.

The Committee has been formed to review the report and generate further projects



which can be undertaken to improve the amenity of the Dandenong Creek Valley with particular reference to the City of Ringwood. The Committee has met on several occasions now and has conducted a walk along the creek from H. E. Parker Reserve to Wantirna Road. The Committee members observed the various plant types and urban development along the Ringwood side of the creek.

Applications to the Ministry of Planning and Urban Growth for development funds have been lodged on behalf of the Committee. The proposed developments include native tree planting and bike fences. Further sources of funds are being identified to carry out additional developments along the creek.

During the next twelve months the Committee will identify the most desirable projects for improvement to the amenity of the Dandenong creek, and community involvement will be sought for the appropriate developments.

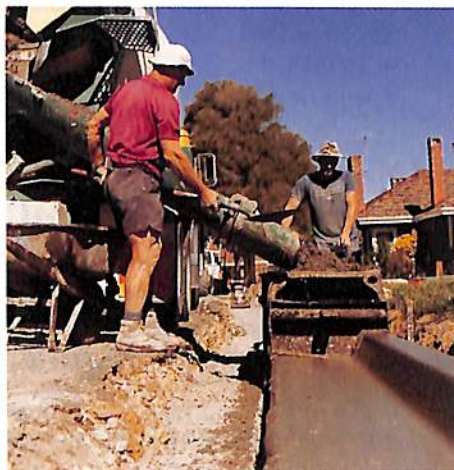
## STRATEGIC BICYCLE PLAN

The State Bicycle Committee granted funds to the City of Ringwood for the preparation of a Strategic Bicycle Plan. A Steering Committee was formed comprising Councillors and members of the public with an interest in bicycles. A Consultant, was appointed to prepare the plan in conjunction with the comments of the Steering Committee.

The Final Draft Report has been submitted to the Committee for comment with the Final Report expected in December 1990. The recommendations and schedule of works from the Report, will form the basis for funding applications from various sources to carry out the development of bicycle facilities within the City.

The report also looks at the aspects of bicycle safety, education and promotion within the City of Ringwood. It is planned that the already extensive system of bike paths within the City be extended, developed and linked with adjoining municipalities. In addition, a programme of promotion of bicycle related activities will enhance the recreational aspects of the City.

Roadworks  
in  
Ellison Street  
by Works  
Department.



## OUR ENVIRONMENT

We are all aware that we must protect our environment for ourselves and future generations, and Council is committed to ensuring that this occurs.

Waste minimisation is very important, particularly as the locations suitable for the disposal of waste are constantly decreasing, and costs for collection and disposal are increasing. It is the responsibility of every member of the community to reduce their waste and this can be done in many ways, from composting to reusing containers rather than throwing them away.

## INCINERATORS

It is essential that we are responsible with our use of incinerators. Apart from the obvious danger associated with fire, the immediate danger to neighbours and our environment must be considered.

Council has a Local Law which covers the use of incinerators and open air burning.

There are restrictions regarding the type of things you can burn, and they include:-

- (a) any matter which may cause a nuisance or is liable to be dangerous to health or liable to be offensive to any person;
- (b) any rubber or plastic substance;
- (c) any petroleum oil or material containing petroleum oil;
- (d) any paints or receptacles which contain or which contained paints;
- (e) any manufactured chemicals;
- (f) any foodwastes; or
- (g) any grass clippings.

## WHEN CAN I USE MY INCINERATOR?

### TOTAL BAN ON TOTAL FIRE BAN OR SMOG ALERT DAYS

You may only use an incinerator on Saturday, Tuesday or Thursday between 10.00 am. and 1.00 pm., unless of course it is a Total Fire Ban day or Smog Alert day.

These restrictions are designed to ensure that any burning off is not offensive to others, will do as little environmental damage as possible and cause the least inconvenience to neighbours.

However, before you light your incinerator, consider carefully what you intend to burn, branches for example, can be mulched and used for compost, paper can be recycled, do you really need to burn your rubbish?





## GARBAGE SERVICE

The City offers a comprehensive collection system featuring the following on a weekly basis:-

- Unlimited number of 86 litre bins for household refuse.
- Unlimited number of 45 litre bins for garden refuse.
- Tree and shrub prunings up to 1.5 metres in length.
- Comprehensive indestructible waste collection.

The collected waste is transported to the Berwick Regional Refuse Disposal Site. The system will be reviewed over the coming year with alternative systems being evaluated including the use of bins and alternative disposal sites.

A separate garbage charge is being included in the rates charged to properties. This reflects the increasing cost of refuse collection and disposal for the community.

## What We Will Not Collect

1. The garbage service covers households only and does not include industrial or business premises. No waste from these premises will be collected.
2. Builders' rubbish as a result of demolition or erection of a building will not be collected by this service.
3. Plastic bags of rubbish **will not** be collected unless placed in a bin, as injury can result from unseen sharp objects in flimsy bags.
4. Large containers will not be emptied. You must observe the maximum bin sizes - 86 litres for household waste and 45 litres for garden waste.
5. All car parts including engine blocks, bodies and axles.
6. Waste oil of any kind.
7. Dangerous chemicals.

## RECYCLING/WASTE MINIMISATION

A door-to-door collection and recycling service is provided for glass, aluminium cans and PET plastic soft drink bottles. In addition, waste paper is separately collected by the garbage service.

### BOTTLE BAGS

As part of the recycling effort you can obtain a bottle bag from the Council, if you don't already have one into which you can place all glass bottles, plastic (P.E.T.) soft drink bottles, glass jars and aluminium cans. This bag is then placed beside your garbage bins on collection day.

It doesn't take much effort to separate your garbage and yet the environment does benefit.

### PAPER WASTE

People need to be encouraged to continue placing waste paper beside their bins for collection. Though Council no longer has a paper collection service, it is negotiating to restart this worthwhile collection. Until this happens you are collecting large quantities of paper. It is not useless, and should be reused not thrown away. Children always enjoy paper mache, and there are many other craft activities which waste paper can be used for.

If you have an open fire you can make paper bricks, which are a great alternative to wood. Rather than using plastic bags in the kitchen for rubbish, wrap your rubbish prior to placing it in the bin. There are also paper collection sites where you can deliver your waste paper, so the next time you're going for a Sunday drive, check to see if you are passing any collection sites along the way.

If however there is no way for you to dispose of or use your newspaper, stack them beside your bin and they will be collected.



Recyclable articles may be left at Community and Scout collection Centres. This provides a valuable source of income for these groups. Take your articles to the following locations

#### **GLASS ONLY**

1st Ringwood Scouts - Bedford Road (Bedford Park).  
2nd Ringwood Scouts - Heathmont Road (H.E. Parker Reserve).  
3rd Ringwood Scouts - Knaith Road (Reserve).  
4th Ringwood Scouts - Mines Road Ringwood.  
7th Ringwood Scouts - B. J. Hubbard Reserve.  
1st Heathmont Scouts - Barrow Drive.

#### **GLASS, PAPER AND ALUMINIUM CANS**

Maroondah Social Health Centre - 12 Grey Street, East Ringwood.

#### **ALUMINIUM CANS ONLY**

Ringwood Apex (Cash in a Can) - East end of building at Ringwood Square every Saturday morning.

#### **COMPOST BINS**

To assist waste minimisation Council has introduced a compost bin scheme which enables compost bins to be obtained from Council at subsidised prices.

Four different types of compost bins, ranging in price from \$23 to \$80 and varying in size from 200 litres to 500 litres, are available. Two of the four types are made of recycled plastic, which has the added advantage of providing a use for plastic products which would otherwise be disposed of in the weekly refuse collection.

The bins may be purchased from the Parks and Gardens Depot located in Greenwood Avenue, Ringwood.



Ingrid Makowski  
Health Surveyor  
inspects a  
Hairdressing  
premises.

## **HEALTH**

Ringwood is a healthy city in which to live and work. However, constant surveillance is needed in order to safeguard our high standards of environmental health.

Regardless of what a municipality provides in public amenities, they are of little use to the person whose health will not allow enjoyment of them. The Council's Medical Officer of Health oversees the health of the community and is assisted in this responsibility by the Council Health Surveyors.

Council's Health Surveyors are trained professionals dedicated to providing a comprehensive preventative health care service. Their most important work is done in the areas of food inspection, prevention of infectious diseases, monitoring accommodation, housing and food standards, abating health nuisances, checking environmental pollution, pest control and health education.

#### **FOOD INSPECTION**

Health Surveyors routinely inspect all premises, vehicles, and vending machines and anywhere that food offered for sale meets the consumer's expectations, is wholesome, free from contamination, unadulterated and safe.

All food outlets, including hotels, restaurants, takeaway food shops, stalls and food caravans are inspected regularly to check on food storage, temperature control, food protection, cleanliness of utensils and equipment, refuse storage and personal hygiene of staff. The condition of buildings is also checked to ensure they comply with minimum requirements

#### **"BE WISE - BE IMMUNISED"**

Experience has proved that preventative immunisation is good insurance against infectious diseases. Council's immunisation Programme offers free protection from infancy, through teenage and adulthood against Diphtheria, Tetanus, Whooping Cough, Poliomyelitis, Measles, Mumps, Rubella and Hepatitis B for "at risk children". An average of 7,500 immunisations are given annually by Council Medical Officers of Health.

#### **SCHOOL ENTRY CERTIFICATES**

These certificates are now required when children are being enrolled at primary school prep level. The certificates, which state whether or not a child has been immunised against Diphtheria, Tetanus, Polio, Measles and Mumps, are obtainable from the Council Health Department in the municipality where the immunisation was received.

## **COUNCIL SUPPORTS WASP CONTROL**

The incidence of European wasps in Ringwood last summer was the highest recorded. More than 1,100 reports were received. There are only two ways to reduce European



wasp numbers: use pesticides for destruction of nests that can be located, and/or import and release one or more of the many natural enemies of the wasp that occurs in the northern hemisphere,

The use of pesticides, although appropriate for shorter-term local control of wasp problems, will do little to provide long-term solutions to the spread and overall abundance of wasps. A partial solution is the introduction of specific natural enemies of the wasps such as the small parasitic wasp, *Sphecophaga vesparum*, which attacks the pupal stage of the European and English wasps.

Following the initial release of 50 parasitic wasps, in cocoon form, adjacent to the Civic Centre in December 1989, Ringwood Council is boosting the biological control of European wasps by contributing \$3,000 towards the programme being conducted by the Department of Conservation and Environment. This is financing the production and release of 1,000 parasitic wasps in different areas of the municipality. The parasitic wasps, which are harmless to humans and do not kill native wasps or bees, are being released under the supervision of the Health Department in different areas of the municipality.

The parasite has the potential to spread rapidly during the summer months. Once established it is expected to reduce the incidence of intense wasp seasons by limiting the size of nests. It can also reduce the number of queen wasps produced in a nest, hence reducing the build up and spread of wasps. It is not anticipated that it will entirely eradicate all European wasps.

Residents can treat nests with Baygon Dust obtainable from supermarkets and hardware stores or obtain details of discount pest control services from the Health Department, telephone 870 4311, extensions 242 or 246.

## WITNESSING OF DOCUMENTS

The laws relating to who may witness statutory declarations and receive Affidavits has been changed.

The position of Office of Commissioner for Taking Affidavits has been **abolished**.

- There is no fee payable for witnessing documents.
- Any person witnessing the declaration or receiving the Affidavit **MUST** legibly type, stamp or print their name and address below their signature.

### WHO CAN WITNESS STATUTORY DECLARATIONS?

These persons are authorised to witness statutory declarations:

A justice of the Peace or a Bail Justice

A Notary Public

A Barrister or solicitor of the Supreme Court

A Clerk to a Barrister or a Solicitor

The Prothonotary or a Deputy Prothonotary of the Supreme Court

The Registrar or a Deputy Registrar of the Magistrates' Court

The Registrar of Probates or an Assistant Registrar of Probates

The Associate to a Judge of the Supreme Court or of the County Court

The Secretary of a Master of the Supreme Court or of the County Court

A person registered as a Patent Attorney Under Par. XV of the Patents Act 1952 of the Commonwealth

A Fellow of the Institute of Legal Executives (Victoria)

A member of the Police Force

The Sheriff or a Deputy Sheriff

A member or former member of either House of the Parliament of the Commonwealth

A Councillor of a municipality

A Town Clerk or Shire Secretary

A legally qualified medical practitioner

A Dentist

A Veterinary surgeon

A Pharmacist

A Principal in the teaching service

The Manager of a Bank

A member of the Institute of Chartered Accountants in Australia or the Society of Accountants or the National Institute of Accountants

The Secretary of a Building Society

A Minister of Religion authorised to celebrate marriages

A person who holds an office in the public service (of Victoria) that is prescribed as an office of which the holder may witness statutory declarations.



---

## WHO CAN RECEIVE AFFIDAVITS?

These persons are authorised to receive affidavits;

Any Judge or the Associate to any Judge

A Master of the Supreme Court or the County Court or the Secretary of such a Master

A Justice of the Peace or a Bail Justice

The Prothonotary or a Deputy Prothonotary of the Supreme Court

The Registrar or Deputy Registrar of the County Court

The Principal Registrar of the Magistrates' Court

The Registrar or a Deputy Registrar of the Magistrates' Court

The Registrar of Probates or an Assistant Registrar of Probates

A member or former member of either House of the Parliament of Victoria

A member or former member of either House of the Parliament of the Commonwealth

A Notary Public

Any solicitor who holds a current practicing certificate under the Legal Profession Practice Act 1958

A member of the Police Force of or above the rank of sergeant or for the time being in charge of a Police Station

A person who holds an office in the public service (of Victoria) that is prescribed as an office of which the holder may receive affidavits

A munincipal clerk

A person registered as a Patent Attorney under Part XV of the Patents Act 1952 of the Commonwealth

A Fellow of the Institute of Legal Executives (Victoria)

You may like to telephone the authorised person before going to see them.

Further details may be obtained from the Ringwood - Croydon Advisory Service on 870 3233 or the Civic Centre on 870 4311

---

## SOME COMMONLY ASKED QUESTIONS

### Question:

"Where is the nearest tip?"

### Answer:

City of Nunawading tip along Burwood Highway opposite Morack Road, Melways map reference 62K8.

### Question:

"When is the tip open?"

### Answer:

8.00 a.m. to 3.00 p.m. seven days a week (closed Good Friday and Christmas Day).

### Question:

"Where can I hire a hall in Ringwood?"

### Answer:

We keep a list of available halls in Ringwood at the Civic Centre. Please see the receptionist.

### Question:

"Where can I find a contact number for a local club or organisation?"

### Answer:

We keep a list at the Civic Centre. Please see the receptionist. This is also available at Ringwood Croydon Advisory Service, telephone 870 3233.

### Question:

"How can I hire a baby safety restraint?"

### Answer:

Application forms are available from all Maternal and Child Health Centres. Details about the collection and return of the restraints are stated on the form.

### Question:

"How do I become an Australian Citizen?"

### Answer:

Application forms for Australian Citizenship are only obtainable from the Department of Immigration and Ethnic Affairs, telephone 662 2011.

### Question:

"How can I have bees or wasps removed from my property?"

### Answer:

We keep a list of apiarists at the Civic Centre. Please see the Health Department.



## MEMBERS OF PARLIAMENT

### FEDERAL PARLIAMENT

#### Division of Aston:

Mr. Peter Nugent, M.P.  
Suite 10 - 1st Floor,  
322 Mountain Highway,  
WANTIRNA, 3152  
Telephone: 720 3233

#### Division of Casey:

Mr. Bob Halverson, O.B.E., M.P.  
Suite 107 Shopping Centre,  
CHIRNSIDE PARK, 3116  
Telephone: 726 9077

#### Division of Deakin:

Mr. Ken Aldred, M.P.  
542 Maroodah Highway,  
MITCHAM, 3132  
Telephone: 873 1855

### STATE LEGISLATIVE COUNCIL (UPPER HOUSE)

#### Province of Nunawading:

The Hon. George Cox, M.L.C.  
69 Railway Road,  
BLACKBURN, 3130  
P.O. Box 499  
Telephone: 877 5482

The Hon. Rosemary Varty, M.L.C.  
Suite 2-1st Floor,  
29 Ringwood Street,  
RINGWOOD, 3134  
Telephone: 870 2841

### STATE LEGISLATIVE ASSEMBLY (LOWER HOUSE)

#### District of Mitcham:

Mr. John Harrowfield, M.L.A.  
6 Station Street,  
MITCHAM, 3132  
Telephone: 878 4113

#### District of Ringwood:

Mrs. Kay Setches, M.L.A.  
44 New Street,  
RINGWOOD, 3134  
Telephone: 870 7396

## AUSTRALIAN ELECTORAL COMMISSION

Inquiries regarding change of address OR enrolling for Federal and State elections should be directed to:-

#### ASTON

31 Macauley Place,  
BAYSWATER, 3153  
Telephone: 729 8713

#### DEAKIN

1st Floor - 20 Melbourne Street,  
RINGWOOD, 3134  
Telephone: 870 8294

## Community Information

### ACCOMMODATION

(See also Housing and Emergency Housing Headings)

Maroondah Accommodation Services  
312 Mt. Dandenong Road, Croydon ..... 725 2188

Ring for an appointment.

Emergency housing and information on a range of housing services.

Provides interest-free loans for bonds and rent in advance

on rental accommodation for low-income people.

### AGED ACCOMMODATION

There is a variety of facilities locally to serve the needs of elderly and frail persons including elderly persons units, Hostels and Nursing Homes.

Information can be obtained from Ringwood Croydon Advisory Service ..... 870 3233

OR ring Council's Community Services Officer for the Aged, to discuss particular concerns. Staff involved in caring for Aged and Disabled are available to attend to both specific and broad concerns relating to these areas ..... 870 4311

### AGEING

Victorian Council on the Ageing  
1st Floor, 449 Swanston Street, Melbourne ..... 663 6199

Provides information for the elderly and their families as well as counselling services.

Advice on activity groups for aged and disabled adults. .... 870 4311

#### Central Ringwood Community Centre

13 Bedford Road, Ringwood  
Contact Pam or Pauline ..... 870 2602  
Elderly folk meet Wednesday mornings. Varied activities.  
Transport can be arranged.

**Friendly Circle** A more active group of retired folk who meet at the above address on Wednesday afternoon.

Contact Mrs. B. Hooper ..... 870 7559

#### Salvation Army - "Companion Club"

An informal group of elderly who meet Fridays 10.30 am.

Contact Mrs. Margaret Southwell & Major Morris ..... 870 0720

#### East Ringwood Caring Centre

Holy Trinity Church - Patterson Street, East Ringwood

Operates second and fourth Thursday of each month.

Activities and socialisation for Aged and Disabled.

Contact - Mrs. Sylvia Simpson ..... 870 1944



### Greenwood Day Care Centre

Uniting Church, Cnr. Greenwood Street and Station Street, Ringwood.

Operates Mondays and Thursdays 10.30 am. to 2.30 pm.

Contact Deaconess Gwen Shanks ..... 877 1938

Activities, socialising, gentle exercise program all incorporated with high quality loving care. For frail elderly. Transport can be arranged.

### Heathmont Drop In Centre

Uniting Church, 81 Canterbury Road, Heathmont. Operates Mondays.

Contact persons Mrs. Lois Hunkin ..... 870 7281

Rev. Catford ..... 729 4452

Activities, cards, guest speakers. Hospitality assured. Transport can be arranged

### R.V.I.B. Social Centre

Red Cross Hall, Knaith Road, East Ringwood.

First and third Wednesday each month. 10.00 am. to 3.00 pm.

Social and supportive drop in centre for visually impaired.

Transport can be arranged. .... 529 3544

### Do Care

A friendly visiting scheme for elderly lonely people organised by ..... 720 2155

Wesley Central Mission throughout Melbourne. .... 662 2044

### ALCOHOLISM

A.A. Alcoholics Anonymous ..... 429 1833

For contacts in Ringwood

"ADDREC" 36 Pine Crescent, Boronia ..... 762 4200

Tuesday to Friday 10.00 a.m. to 5.00 p.m.

Thursday 8.00 p.m. - Personal Development Group

Wednesday 8.00 p.m. - Parent - Friends Group

Monday 3.00 p.m. - Family Action Community Team

24-hour telephone answering service.

### Al-Anon

Assists relatives of problem drinkers

Office hours - 10.00 a.m. to 4.00 p.m. .... 650 3368

### Addcare

1030 Whitehorse Road, Box Hill ..... 898 9511

Monday to Friday 9.00 a.m. to 5.00 p.m.

Evening appointments available for counselling on request -  
also education about alcohol and drugs.

Maroondah Alcoholic Recovery Project ..... 725 5333

433 Mt. Dandenong Road, Kilsyth

Runs community residential treatment centres for men and women.

### ARTHRITIS FOUNDATION OF VICTORIA

Yarra Boulevard, Kew P.O. Box 195, Kew ..... 862 2555

The Nunawading/Ringwood Group meets at the Maroondah

Social Health Centre, Patterson Street, East Ringwood ..... 879 3933

Third Thursday of Month at 1.00 p.m.

Contact Mrs. Stewart - ..... 870 9501

### ARTS AND CRAFTS GROUP

A current listing is kept at the Civic Centre ..... 870 4311

and by the Ringwood Croydon Advisory Service ..... 870 3233

### "BIALA" RINGWOOD

2 Greenwood Avenue, Ringwood ..... 870 2335

Parents Support Group Monday, Wednesday,

Thursday 9.30 a.m. to 3.00 p.m.

A playgroup-type programme for pre-school children with  
disabilities and special needs, providing parent relief.

Early intervention programme has commenced on Tuesdays and Fridays.

Referral needed. Contact - Mrs. Marjorie Oates ..... 879 1494

### BLIND

Contact - Association for the Blind, ..... 822 1111

- Royal Victorian Institute for the Blind. .... 529 3544

Also at Ringwood Library is a collection of audio books on  
cassette tapes, and a selection of large print books.

### CARE FORCE

22 Croydon Road, Croydon ..... 725 1622

Monday to Friday 9.00 a.m. to 5.00 p.m.

Provides a variety of programmes to strengthen family life;  
prevent family breakdown and the institutional care of children.

### CATHOLIC FAMILY WELFARE BUREAU

459A Whitehorse Road, Mitcham. (Cnr. Albert Street) ..... 873 4344

An agency open to all, which provides general, marriage  
and family counselling to assist people experiencing personal  
difficulties. Also counselling for children and adolescents,  
"Big Brother", and "Big Sister" programmes

### CHAMBER OF COMMERCE AND INDUSTRY

P.O. Box 62, Ringwood, 3134

### CHARITY CARAVAN

The City of Ringwood has two caravans which are available to ..... 870 4311

local community groups for fund raising purposes.

Contact Civic Centre.



## CHILDBIRTH AND PARENTING ASSOCIATION

2 Mountain View Street, Croydon. .... 725 4832  
Provides classes, support groups and literature. .... 725 3485  
Bassinette restraints and electric breast pump for hire.  
9.00 a.m. and 12.00 noon weekdays.

(Correspondence to P.O. Box 219, Mooroolbark, 3138)

## CHILDREN'S SERVICES

**Family Day Care Service** provides minding in carefully selected private homes under Council supervision. Available full-time, part-time or for relief care of pre-school children; also before and after school care of school age children.

Contact Family Day Care ..... 870 4311

**After School Program** An activities program sponsored by Council provides care and recreation for school age children weekdays 3.30 p.m. - 6.00 p.m. during school terms at the following locations:-

**Eastwood Primary School**

**Ringwood Primary School**

**Norwood Primary School**

**Ringwood Community Centre**

Children are also picked up in the Community Bus and taken to these locations to participate in the Program.

Fees vary according to means. Further information is available from the Community Support Officer. .... 870 4311

## Child Care Centres

A list of commercially operated centres is available from the Civic Centre ..... 870 4311

## Knaith Road Child Care Centre

Inquiries should be directed to the Co-ordinator - Jenny Johnston ..... 870 6966

## Ringwood Community Child Minding

40 Warrandyte Road, Ringwood ..... 870 6294

A non-profit community organisation providing full time, part time occasional and emergency child care. Map Ref: N6

## Ringwood North Playgroup Inc.

Held at Scout Hall, North Ringwood Reserve  
Enrolment Officer - Jan Sutcliffe ..... 876 1060



## CHURCHES

### Anglican Church of Australia:-

#### Christ Church:-

\* 207 Canterbury Road, Heathmont  
Father Martyn Hope ..... 870 7119

#### Holy Trinity:-

\* 49 Patterson Street, Ringwood East  
Father Michael Godfrey ..... 870 1000

#### St. Pauls:-

\* 40 Warrandyte Road, Ringwood ..... 870 6074  
Father Douglas Edmonds ..... 870 2093

### Assembly of God:-

Cnr. Mullum Road & Jeffrey Drive, North Ringwood  
Pastor John Woodhouse ..... 870 0588

### Baptist:-

\* Cuthbert Street, Heathmont  
Rev. Kitchen ..... 729 5748

\* 44 Dublin Road, Ringwood East  
(Ringwood Christian Family Centre) ..... Church 879 3429  
Pastor J. McNeice ..... Home 725 2400

\* Ringwood Baptist  
Rev. D. Jamieson ..... 725 2231

### Calvary Baptist Church:-

\* 12-14 Armstrong Road, Heathmont ..... 729 8481  
Contact Ernie Veszely ..... 728 5778

### Christian Brethren - Gospel Chapel:-

1 Tamar Street, Ringwood - John Crouch ..... 870 0102  
Pastor Wraight ..... 876 4071

### Christian Life Centre:-

222 Oban Road, North Ringwood ..... 876 1811

### Christian Science:-

26 Station Street, Ringwood ..... 870 6807

### Church of Christ:-

13 Bedford Road, Ringwood ..... 870 8169

### Lutheran Church:-

Cnr. City and Wantirna Road, Ringwood ..... 870 7054

### Presbyterian Church:

6 Waterloo Street, Heathmont ..... 870 6161



<b>Roman Catholic Church:-</b>	876 3717
* 120 Oban Road, Ringwood North .....	876 3077
* 14 Bedford Road, Ringwood .....	870 6056
* Cnr. Bona and Patterson Streets, Ringwood East .....	870 7277
	870 4820

<b>Salvation Army:-</b>	
51 Wantirna Road, Ringwood .....	Office 870 0720
	Welfare 879 2894
	Officer 870 6552

<b>Seventh-Day Adventist Church:-</b>	
28 Mullum Road, Ringwood.	

<b>Uniting Church in Australia:-</b>	
* Greenwood Avenue, Ringwood	
Rev. Arthur Poole .....	870 6033
* 81 Canterbury Road, Heathmont	
Rev. Rob Catford .....	729 4452
* Dickson Crescent, North Ringwood	
Rev. Jenny Burnes .....	870 9913
* 28 Freeman Street, East Ringwood .....	870 2017

#### COMMUNITY AID ABROAD, RINGWOOD & DISTRICT GROUP

Contact: Mr. Ray Hibbs, Secretary .....	A.H: 870 2186
---	---------------

#### COMMUNITY CENTRES

<b>Central Ringwood Community Centre</b>	
18 Pitt Street, Ringwood .....	870 2602
Provides a friendly place to call in. A range of adult classes and play groups for pre-school children.	
Friendly Circle Group for over 50,s - Wednesday afternoon.	
Map Ref: P7	

<b>North Ringwood Community House</b>	
120 Oban Road	
Co-ordinators Jo and Kathy .....	876 3421
Small group of elderly folk meet each Tuesday	
11.30 a.m. to 2.30 p.m. for varied activities.	
All activities on other days are open to any age group.	

#### COMMUNITY SUPPORT OFFICER

Council's Community Support Officer, is available .....	870 4311
to provide a wide range of information and assistance to individuals and groups in the City. She encourages residents to participate in community affairs and works with residents on projects to meet evolving needs. She may be contacted at the Civic Centre.	

#### COMMUNITY SERVICES VICTORIA

<b>Regional Management Unit</b>	
46 New Street, Ringwood .....	870 0054
Programs accommodated within these premises are:	
Regional Directorate	
Resource Management Unit	
Specialist Child and Family Services	
Regional Planning Unit	

<b>Aged &amp; Disability Services Unit</b>	
39 Ringwood Street, Ringwood .....	870 9077

<b>Family, Youth and Children's Services Unit</b>	
62 Charter Street, Ringwood .....	879 3311

<b>Human Resource Management Team</b>	
39 Ringwood Street, Ringwood .....	870 9077

<b>Intellectual Disability Services Unit</b>	
39 Ringwood Street, Ringwood .....	870 9077

<b>Community Supervision Unit</b>	
15 Ferguson Street, Heatherdale .....	874 7522

#### C.S.D.G.

C.S.D.G. is the Community Support and Development Grants .....	879 3311
Program of the State Government. Through grants to community groups, C.S.D.G. supports services to strengthen families and encourage people to take an active role in community affairs. In Ringwood the local work of the C.S.D.G. programme is done by the Ringwood Community Development Committee (for detail refer to the heading in this listing).	

#### CONSUMERS CREDIT LEGAL SERVICE

4th Floor, 636 Bourke Street, Melbourne, 3000 .....	670 5088
Free advice on credit	
9.00 a.m. to 5.00 p.m. Monday - Friday	

#### CONSUMER RESOURCE AND ADVOCACY CENTRE - OUTER EAST

214 Mt. Dandenong Road, Croydon.	
This Centre has been established to deal with a variety of consumer related problems and issues. It provides:-	

<b>Consumer Credit Advocacy Programme</b> .....	723 4469
9.00 a.m. - 5.00 p.m. Monday to Friday	

<b>Consumer Affairs Project (Information and Advice)</b> .....	723 3631
9.00 a.m. - 5.00 p.m. Monday to Friday .....	723 4469

<b>Consumer Buying Advisory Service</b>	
9.00 a.m. - 12.30 p.m. Monday to Friday .....	723 4650



## MINISTRY OF CONSUMER AFFAIRS

88 Maroondah Highway, Ringwood ..... 879 5677  
(Upstairs - opposite Billy Guyatts)

## CORRECTIONS

Ringwood Community Corrections Centre ..... 879 2626  
51 Seymour Street, Ringwood.

Provides Court Advisory Service for adult offenders and supervision of community based orders, parolees and people released on early release schemes.

## COURTHOUSE

Bourke Street, Ringwood. Map Ref: O5 ..... 870 6594

Advice may be received from the Clerk of Courts on any weekday between 9.30 a.m. and 4.00 p.m. by appointment.

## CREDIT UNIONS

Croydon Community Credit Union ..... 879 2201

11 Civic Place, Ringwood.

Whitehorse Savings & Loans Co-operative Ltd. .... 898 4652

Savings, loans, financial counselling, taxation advice, will consultancy.

## DAY ACTIVITY CENTRE FOR FRAIL, AGED AND DISABLED

"Penumbra" 268 Canterbury Road, Heathmont. Map Ref. T7 ..... 729 7269

"Penumbra" is a day centre for disabled people in the outer eastern suburbs, which offers crafts, social and recreational activities.

Monday 10.00 am. - 1.30 pm., Tuesday, Wednesday and

Thursday 10.00 am. - 12.00 noon and 1.00 pm. - 3.00 pm.

## DEAFNESS

See H.E.A.R. Service at Maroondah Social Health Centre ..... 879 3933

## DENTAL CLINIC (Maroondah Hospital)

124 Mt. Dandenong Road, Ringwood East ..... 871 3391

## DENTISTS AND DOCTORS

A current listing is kept by Ringwood Croydon Advisory Service ..... 870 3233

## DISABLED PERSONS' FACILITIES

### Fortnightly Shopping Bus:

A bus service for aged people has been arranged by Ringwood Council. The service operates alternate Wednesdays and transports people from their homes to Eastland where they are left to do shopping and later returned home.

Contact Council's Community Services Officer for the Aged, and disabled. .... 870 4311

## Independent Living Centre:

52 Thistlewaite Street, South Melbourne ..... 690 9177

The Centre has a display of aids for the disabled and an information service which provides details about cost and availability of appliances. Visits by appointment only.

## Library Bus:

This is a free service to frail elderly and disabled ..... 870 4311  
Ringwood residents.

Volunteer drivers transport people to and from the library, where they exchange books and enjoy morning tea which is prepared by the Red Cross. Contact Council's Community Services Officer for the Aged and Disabled.

## Parking:

Reserved parking spaces for disabled motorists are located at Eastland, outside Lower Mall, between Myers and Woolworths, two at lower level near the north-west corner of the building, and two at the upper level near the Commonwealth Bank.

Rooftop carpark above Safeway, corner Warrandyte Road and Maroondah Highway.

North Ringwood, in service road behind shops (enter from Oban Road)

Burnt Bridge Shopping Centre, Maroondah Highway, in service lane.

Ringwood Market (enter from Bond Street).

Ringwood Square Shopping Centre (enter from Seymour Street, adjacent to front entrance).

## Telecom Business Office:

Telecom has a range of aids available to assist disabled people with using a telephone.

Initial enquiries

56-60 Rutland Road, Box Hill ..... 895 7211

## Toilets:

Public toilets which include special facilities for the disabled are located -

in Myer Eastland on 2nd Level adjoining the hairdressing salon (one male and one female toilet for disabled).

at Ringwood Lake, Ringwood Library, Wombolano Park and Ringwood Cultural Centre.

Ringwood Market - opposite disabled parking bay.

Ringwood Square Shopping Centre - near Advisory Service

## Disabled and Disadvantaged Worker's Co-operative:

Chairman: Mr. John Meriesch ..... 876 2918

Provides arranged work for independent disabled or disadvantaged people.

Registered Office: 87 Wonga Road, Ringwood

Retail Outlet: Market at Burnt Bridge Shopping Centre -  
1st Sunday every month.



## DISPUTES AND MEDIATION

### Dispute Settlement Centre Outer East Inc.

Trained mediators will help anyone with an on-going relationship (with the exception of family disputes) find a satisfactory solution to their disagreements.

Level 1, Capital City Blvd., Knox District Centre, Wantirna South 3152

(Next to Knox Civic Centre and opposite Bayswater Bulk) ..... 887 2255

Ring to make an appointment. .... 887 2785

## DRIVING TRAINING

Metropolitan Traffic Education Centre, Colchester Road, Kilsyth.

A community project providing driver education on an off road driver complex

Pre and Post licence drivers

Keith George ..... 725 4758

## DRUGS

For information about drug and alcohol use and abuse contact:

The Alcohol and Drug Foundation ..... 690 6000

Buoyancy Foundation of Victoria ..... 429 3322

D.U.P.A. (Drug Users and Parents' Aid) - 10 Small Street, Hampton ..... 598 5366

## EMPLOYMENT

Commonwealth Employment Service (C.E.S.) "Job Centre"

88 Maroondah Highway, Ringwood. .... 871 1888

Career Reference Centre, Cnr. Elizabeth and La Trobe Streets, Melbourne. .... 663 8466

## ENVIRONMENT

Complaints about pollution of the environment should be directed

to Council's By-laws Officers ..... 870 4311

Environment Protection Authority (All hours) ..... Business 628 5777

## EQUAL OPPORTUNITY - OFFICE OF THE COMMISSIONER FOR

4th Floor, 356 Collins Street, Melbourne. .... 602 3222

## FAMILY PLANNING SERVICES

Government sponsored

Bayswater - 658 Mountain Highway, Bayswater

For appointments during times listed:- ..... 729 1337

Monday 1.30 pm. - 7.30 pm., Wednesday 12.30 pm. - 6.30 pm.

Natural family planning - Thursday 9.00 am. - 3.00 pm.

Nunawading - Family Planning Clinic, 7 Wood Street ..... 878 9635

For appointments during times listed:-

Monday, Tuesday and Thursday 6.00 pm. - 8.30 pm.

Friday 9.00 am. - 11.30 am.

Wantirna South - Infant Welfare Centre, 3 Coleman Road ..... 801 8259

For appointment during times listed

Tuesday 2.30 pm. - 5.00 pm.

(Church Sponsored)

Pregnancy Action Centre, 5 Greenwood Avenue, Ringwood ..... 870 7044

Monday, Tuesday, Thursday and Friday 9.30 am. - 3.00 pm.

Wednesday - 9.30 am. - 8.00 pm.

Monday Evenings 6.00 pm. - 8.00 pm.

Saturday 10.00 am. - 12.00 noon.

Free Pregnancy Testing - Post Abortive Counselling.

Pregnancy support and counselling - medical referral

Mothers Support Group.

## FAMILY WELFARE

See Careforce, Catholic Family Welfare Bureau, or

Maroondah Social Health Centre.

## FINANCIAL COUNSELLING

Outer East Financial Counselling Service ..... 894 1966

A free service covering Ringwood, Croydon and Nunawading

residents, and people working in the area, based at R.O.K.,

Silver Grove, Nunawading.

Monday to Friday 9.00 am. - 5.00 pm. Ring for an appointment.

## FINANCIAL RELIEF - EMERGENCY

Contact Ringwood Croydon Advisory Service

for referral to appropriate sources. .... 870 3233

## FOSTER CARE

For emergency, respite, pre-adopt, short and long term foster care of children 0-16 years.

Contact Care Force, Foster Care, 22 Croydon Road, Croydon ..... 725 1622

For foster care and other accommodation for teenagers approximately

14-18 years contact S.H.A.C. (Supportive Housing Accommodation) ..... 878 4622

27 Holland Road, Blackburn South ..... A.H: 879 1344

## GAMBLERS ANONYMOUS

P.O. Box 369, Richmond, 3121

Meetings Monday 8.00 p.m., St. Francis Catholic Church,

Whitehorse Road, Box Hill. Rob - after 6.00 pm. .... 232 9627

## GARDEN, RINGWOOD COMMUNITY GARDENING CO-OPERATIVE

Located at the corner of Belgrave and Canterbury Roads.

Garden plots are available for individuals and families to lease.

Contact Mr. Frank Wright or ..... A.H: 870 2961

Mr. Trevor Walker ..... A.H: 874 4782

## GOLF COURSE

Ringwood's Public Golf Course is located in Canterbury Road, ..... 870 7496

Ringwood. Barbeque facilities are open to public. Map Ref: U3



## GROW

A Mental Health self-help and support organisation ..... 898 8525  
519 Station Street, Box Hill, Monday - Friday 10.00 a.m. - 3.00 p.m.

**HALLS FOR HIRE** A listing is available from the Civic Centre ..... 870 4311

## HEALTH

Crohns & Colitis Association  
P.O. Box 201, Mooroolbark, 3138  
Self Help Association, Australia Wide ..... 726 9008

## H.E.A.R.

A hearing education and rehabilitation service for adults ..... 879 3933  
provided at the Moorooddah Social Health Centre.  
Screening tests arranged.

## HEARING AID SERVICE

National Acoustic Laboratories, Hearing Centre  
399 Lonsdale Street, Melbourne ..... 604 4260  
or Whitehorse Plaza, Box Hill ..... 890 0606  
People who hold a Pensioner Health Card may receive free  
hearing aids, batteries, repairs and maintenance of the aid.

## HISTORICAL RESEARCH GROUP, RINGWOOD

President: Mrs. E. Pullin M.B.E., 20 Mullum Road, Ringwood ..... 870 4394  
Secretary: Mr. J. Lindsay, Unit 1/24 Greenwood Avenue, Ringwood. .... 870 8463

## HOBBY CLUBS

A current listing is kept at the Ringwood Croydon ..... 870 3233  
Advisory Service and by the Civic Centre ..... 870 4311

## HOME CARE (DOMICILIARY SERVICE)

Home Maintenance Service:  
Contact: Home Help Supervisor at  
Ringwood Civic Centre ..... 870 4311  
Primarily a home maintenance/odd jobs service for frail, aged  
and disabled persons. Cleaning of windows, spoutings and minor repairs  
are carried out (but not gardening).

## Home Help Service:

Contact: Home Help Supervisor at  
Ringwood Civic Centre ..... 870 4311  
Provides assistance for aged, frail and/or disabled and families in crisis to retain  
them in their own homes for as long as possible.

## Meals on Wheels:

Contact Meals on Wheels Supervisor ..... 870 6757

## SPECIFIC SERVICES

This is a child/adult minding service designed to provide relief for the  
prime carer of a disabled person through the support of caring staff.  
Contact Home Help Supervisor. .... 870 4311

## HOME TUTOR SCHEME

Learn to speak English in your own home. Volunteer tutors  
teach English to migrants.  
Outer Eastern Area  
Contact: Mrs. Sue Smith ..... 720 5944  
658 Mountain Highway, Bayswater (in Family Planning Clinic  
opposite Safeway)  
Tuesday to Friday 9.30 a.m. to 1.30 p.m.

## HOSPITALS

Box Hill and District Hospital, Nelson Road, Box Hill ..... 895 3333  
Manvantara Hospital, 46 Warrandyte Road, Ringwood ..... 870 9611  
Maroondah Hospital, Mt. Dandenong Road, Ringwood East ..... 879 3333  
Ringwood Private Hospital, 36 Mt. Dandenong Road, Ringwood East ..... 870 3322  
For a list of Hospital Auxiliaries contact Ringwood Croydon  
Advisory Service ..... 870 3233  
or the Civic Centre ..... 870 4311

## HOUSING

### EMERGENCY HOUSING

For Women and Children, contact Women's Refuge Referral Service. .... 329 8433  
For Youth, contact Youth Accommodation Services. .... 729 2022  
For Families, contact Maroondah Accommodation Services for ..... 725 2188  
centre information and referral.

### Community Living Support Service - C.L.S.S.

A community based system managing and maintaining accommodation  
and flexible services for people with an intellectual disability.  
There is **no** charge for this service.  
For residents of Ringwood, Croydon and Nunawading -  
Contact: Peter Gibson ..... 723 6585  
Options for Community Living ..... 725 9811  
Office of Intellectual Disability Services (OIDS) ..... 870 9077  
Shop 3, 12 Thomas Brew Lane, Croydon, 3136 and  
12 Mount View Street, Croydon, 3136

### Maroondah Accommodation Services

312 Mt. Dandenong Road, Croydon ..... 725 2188

**Ministry Of Housing**, 19 Ringwood Street, Ringwood ..... 879 5433

Provides the following services:-

General housing information and advice; Public housing applications;



Wait turn applications; Maintenance; Priority housing; Bond and Relocation assistance (private rental); Movable Units (Granny Flat Applications); Rent Collections (8.15 a.m. - 4.30 p.m.)

**Outer East Regional Housing Council  
(Housing Research, Policy and Advocacy)**

312 Mt. Dandenong Road, Croydon ..... 725 9288

**Outer East Tenants Information Service** 312 Mt. Dandenong Road, Croydon,  
Free advice on tenancy issues.

Monday, Wednesday, Friday 1.30 p.m. - 4.30 p.m.

Tuesday, Thursday 9.30 a.m. - 12.30 p.m. .... 725 9152

**Co-operative Housing Society - Ringwood**

Contact Secretary : 21 Ringwood Street, Ringwood ..... 870 6311

**Ringwood/Croydon Rental Housing Co-operative**

312 Mt. Dandenong Road, Croydon ..... 725 4231

**Victorian Housing Advisory Service**

Shop 22, Myer Arcade, 250 Elizabeth Street, Melbourne ..... 663 1147

Provides free advice and guidance to people building or  
buying a house or flat.

**INFANT WELFARE CENTRES**

See information under Maternal and Child Health Centre heading.

**INFORMATION**

For information on all sorts of services and facilities, contact

Ringwood Croydon Advisory Service ..... 870 3233

Monday - Friday 9.30 a.m. - 4.00 p.m. Saturday 10.00 a.m. - 12.00 noon  
at Ringwood Square Shopping Centre, Seymour Street, Ringwood

**INTELLECTUAL DISABILITY SERVICES**

**Outer Eastern Office**

39 Ringwood Street, Ringwood ..... 870 9077

A government service providing advice and assistance  
to intellectually handicapped people, regardless of age.

**INTERCHANGE**

A regional community scheme which provides support and relief  
for families with disabled children.

Contact the Co-ordinator ..... 729 5422

Outer Eastern Office - 658 Mountain Highway, Bayswater ..... 720 5944

**INTERPRETERS**

Telephone Interpreter Service ..... 416 9999

Ringwood Croydon Advisory Service has names of interpreters  
available locally ..... 870 3233

**JUSTICES OF THE PEACE**

A current listing of Justices of the Peace is

kept at the Ringwood Croydon Advisory Service ..... 870 3233

**KINDERGARTENS**

See Pre-Schools

**LEGAL**

Legal Aid Commission of Victoria - 19 Ringwood Street, Ringwood ..... 879 5500

**Nunawading and Eastern Suburbs Community Legal Service**

26 Blackburn Road, Blackburn ..... 877 5777

Staffed by paid and voluntary solicitors. **Appointments necessary.**

**Outer Eastern Community Legal Service** -operates on Wednesday

evenings 6.00 p.m. - 7.00 p.m. at the Community Centre ..... 726 5488

Brice Avenue, Mooroolbark. Solicitors are rostered to give free  
advice and make referrals where needed. No appointment is necessary.

**LEGACY**

Assists families of deceased servicemen in a variety of ways.

Contact Melbourne Legacy or ..... 663 3564

Yarra Valley Legacy Group, Mr. Edward Pawley ..... 879 4516

**LIBRARY**

Ringwood Library, 28 Warrandyte Road. Map Ref: O6 ..... 870 0177

Has community information and activities as well as books. .... 870 0377

**LITERACY**

Free and confidential help is available from trained tutors  
for adults wishing to improve their reading and writing skills.

For further information contact;

Outer Eastern Literacy Program - Marion Kennard ..... (059) 68 8267

or 762 4211

Maroondah Literacy Group - Eileen Toohill ..... 879 6421

or Central Ringwood Community Centre ..... 870 2602

**LITTLE ATHLETICS**

A current listing of the several Little Athletics Groups is

kept at the Civic Centre ..... 870 4311

and by Ringwood Croydon Advisory Service ..... 870 3233

**LONE PARENTS**

See Birthright, Parents Without Partners

For information about childcare, holiday programs, social and

support groups, contact Council's Community Services Officer ..... 870 4311

or Ringwood Croydon Advisory Service. .... 870 3233



## MARRIAGE CELEBRANTS

A current listing is kept by Ringwood Croydon Advisory Service. .... 870 3233

## MARRIAGE COUNSELLING

Catholic Family Welfare Bureau, 459A Whitehorse Road, Mitcham  
(cnr. Albert Street) ..... 873 4344

Maroondah Social Health Centre, 75 Patterson Street,  
East Ringwood ..... 879 3933

Marriage Guidance Council, 10 Civic Square, Croydon ..... 725 9964

## MAROONDAH SOCIAL HEALTH CENTRE

73-77 Patterson Street, Ringwood East ..... 879 3933

A centre which provides counselling and therapy for a wide range of personal,  
social and family problems. Also provides health education programs  
and self help programs. These include -

Arthritis Sufferers & Parkinsons' Disease Association:

Group meetings each fourth Thursday of the month.

## MATERNAL & CHILD HEALTH CENTRES

Heathmont: Viviani Crescent - Nurse Wendy Jones 870 6480

Ringwood: Miles Avenue No. 1 - Nurse Ann Scott 870 6478

No. 2 - Nurse Robyn Jones 870 4777

Ringwood East: Laurence Grove - Nurse Anne Fiedler 870 6479

Ringwood North: Oban Road No. 1 - Nurse Pam Stilling 876 3307

No. 2 - Nurse Wendy Jones 876 4413

## MENTAL HEALTH

**Outer Eastern Mental Health Service** 1-3 Erica Avenue, Boronia ..... 762 2200

Provides counselling and support services.

Monday, Wednesday & Friday 9.00 a.m. - 5.00 p.m.

Tuesday and Thursday 9.00 a.m. - 7.00 p.m. Evening appointments may be available.

Association of Relatives and Friends of the Emotionally and  
Mentally Ill (ARAFEMI) Victoria.

A Statewide self-help Association which provides support for families  
and friends of the emotionally and mentally ill, and those  
suffering Depression or Di Polar Disorder.

615 Camberwell Road, Camberwell. .... 889 3733

809 1341

After Hours: ..... 889 1777

## MIGRANTS

A current listing of services (e.g. language classes) is kept  
by the Ringwood Croydon Advisory Service. .... 870 3233

## MONKAMI

Cnr. Dorset and Lincoln Roads, Croydon ..... 725 8677

This complex includes a day training centre, an activity  
therapy centre and residential accommodation for the  
intellectually disabled.

Retail outlet - Olinda House & Garden Centre ..... 735 3247

207 Main Street, Lilydale. .... 735 3611

## MUSICAL GROUPS

A current listing is kept at the Ringwood Croydon ..... 870 3233

Advisory Service and at the Civic Centre ..... 870 4311

## NADAVOC INDUSTRIES

1-19 Colombo Street, Mitcham ..... 873 1111

A sheltered workshop for disabled people.

## NEWS

### Ringwood Audio News

A monthly cassette of news and articles from the local press  
for persons who cannot read newspapers due to sight impairment  
or other physical difficulties. Contact through Maroondah

Social Health Centre. .... 879 3933

## NORTH RINGWOOD COMMUNITY HOUSE

120 Oban Road, North Ringwood. Map Ref: G7 ..... 876 3421

Provides a range of adult classes and children's  
programs.

## NURSING

Royal District Nursing Service

2 Scoresby Road, Bayswater ..... 729 1666

Home visiting service by fully qualified nurses for ill  
or disabled people of all ages.

## NURSING MOTHERS' ASSOCIATION

5 Glendale Street, Nunawading ..... 877 5011

Provides information, counselling and literature ..... 878 3304

on breast feeding. .... (24 hrs.)

Local groups meet regularly in Ringwood and Heathmont

Nola Barker ..... 876 4512

Kathy Ward ..... 874 7270



## OPPORTUNITY SHOPS

### Baptist Bargain Centre

54 Wantirna Road, Ringwood. Collection service available ..... 870 2954

### Christian Bretheren Family Care Op Shop

116 Railway Avenue, Ringwood East ..... 879 2323

### Church of England Op Shop,

107 Canterbury Road, Heathmont

### Maroondah Hospital Op Shop

4 Murray Place, Ringwood ..... 879 1856

### St. Vincent de Paul

Cnr. Olive and New Street, Ringwood ..... 870 9124

"Thrifty Things", 83 Bedford Road, Ringwood East

Run by Maroondah Social Health Centre, Collection Service ..... 879 3933

### Vermont Lions Club Treasure Shoppe

42 Railway Avenue, Ringwood East. Collection service ..... 870 7768

## OPTOMETRIC SERVICES

### Victorian College of Optometry Clinic

..... 347 0233

Provides glasses and contact lenses. Eye examinations available free for pensioners with Pensioner Health Benefits Card.

An appointment is necessary.

### Royal Victorian Eye & Ear Hospital:

32 Gisbourne Street, East Melbourne ..... 665 9666

Free service for pensioners with Pensioner Health Benefits Card.

8-10 months waiting list for glasses. Emergency treatment available.

## ORGANISATIONS

A comprehensive current listing of local organisations is

available for perusal at the Ringwood Croydon Advisory Service ..... 870 3233

and at the Civic Centre ..... 870 4311

## PARENTS ANONYMOUS

For parents who are having difficulties with their children ..... 654 4654

and fear they have abused or may abuse them. .... (crisis line)

Office open 10.00 a.m. - 4.00 p.m. .... 654 4300

7.00 p.m. - 12.00 midnight, one to one counselling

Discussion group Monday 12.00 noon - 2.00 p.m.

## PARENTS WITHOUT PARTNERS

A self-help organisation for lone parents and their children ..... 836 3211

## PENSIONS

See Social Security Dept. (Ringwood) 41 Ringwood Street ..... 871 2888

## PLAYGROUPS

For information for local playgroups contact: ..... 329 6277

Victorian Playgroup Association ..... or 329 6464

See also Central Ringwood Community Centre and ..... 870 2602

North Ringwood Playgroup Inc. .... 876 3421

## PODIATRY

A subsidized podiatry service is available to Ringwood's Senior Citizens

who have a health benefits card.

Appointments may be made by phoning the centres.

— Ringwood Senior Citizens Centre  
Greenwood Avenue, Ringwood. .... 870 1884

— Ringwood East Senior Citizens Centre  
Laurence Grove, Ringwood East. .... 870 0289

— North Ringwood Senior Citizens Centre  
Norwood Reserve, Warrandyte Road, Ringwood. .... 879 2677

## POST OFFICES

Bedford, 93 Bedford Road ..... Map Ref: Q10 870 3798

Burnt Bridge, 434 Maroondah Highway ..... Map Ref: H14 870 5363

Heathmont, 153 Canterbury Road ..... Map Ref: V9 870 6192

Heathwood, 139 Wantirna Road ..... Map Ref: V5 870 6763

Ringwood, 15 Ringwood Street ..... Map Ref: P5 870 6900

Ringwood East, 50 Railway Avenue ..... Map Ref: Q10 870 6196

Ringwood Heights, 93 Loughnan Road ..... Map Ref: M3 870 1679

Ringwood North, 188 Warrandyte Road ..... Map Ref: G7 876 2412

## PRE-SCHOOLS

Enrolments - enquiries about the Central Enrolment system  
should be directed to Mrs. Jan Hobday ..... 879 4359

The Pre-school Advisor handles general enquiries about  
pre-schools and child development. She can be contacted  
at the Civic Centre on Tuesday mornings. .... 870 4311

Ellie V. Pullin Pre-School Centre  
Tortise Drive, Ringwood North ..... Map Ref: C9 876 4251

Greenwood Park Pre-School Centre  
Greenwood Avenue, Ringwood ..... Map Ref: Q6 870 8881



Heathmont Baptist Pre-School Centre 78 Cuthbert Street, Heathmont .....	Map Ref: W8	729 5003
Heathmont Pre-School Centre 41 Viviani Crescent, Heathmont .....	Map Ref: V10	870 5581
Heathmont East Pre-School Centre Pleasant Drive, Heathmont .....	Map Ref: U13	729 4762
Maroondah Pre-School Centre 16 Evon Avenue, Ringwood East .....	Map Ref: K14	870 2874
Norwood Pre-School Centre Notlen Park, Warrandyte Road, Ringwood .....	Map Ref: L7	870 4360
Oban Pre-School Centre 6a Holyrood Crescent, North Ringwood .....	Map Ref: F11	876 3540
Pinemont Pre-School Centre 27 Hygeia Parade, Ringwood .....	Map Ref: M2	876 3582
Ringwood North Pre-School Centre 70 Lockhart Road, North Ringwood .....	Map Ref: H5	870 5418
Ringwood Uniting Church Pre-School Centre 2 Greenwood Avenue, Ringwood .....	Map Ref: Q6	870 1707
St. Andrews Pre-School Centre 6 Waterloo Street, Heathmont .....	Map Ref: W8	729 5030
Warrawong Day Care Kindergarten Grey Street, Ringwood East .....	Map Ref: M14	870 6020

#### PSYCHIATRIC SERVICES

See Mental Health

#### RED CROSS

Administration Office - Melbourne ..... 619 9999

There are several local units involved in the following activities:

First Aid Training

Homebound Book Delivery Service

Library Service within Maroondah Hospital

Hospital Visiting

Assisting with Blood Bank, Immunisations

Disaster Relief

Fundraising

Transport

Contacts -	Ringwood	Mrs. Norma Biddlecombe	870 1640
	North Ringwood	Mrs. Maureen Richardson	876 3518
	East Ringwood	Mrs. Marnie Conn	870 7017
	Heathmont	Miss A. Mackie	729 4496

Red Cross Shop, Melbourne Street, Ringwood .....	879 2793
Loans of Home Nursing equipment .....	870 7017

#### RED CROSS TRANSPORT SERVICE

The Ringwood East Transport Unit transports people who are ..... 870 5717  
unable to use public transport to medical appointments at  
hospitals. One to two weeks notice and a doctor's referral  
are needed. Monday to Friday: 9.00 a.m. - 12 noon  
and 1.00 p.m. - 4.00 p.m.

#### RETIREMENT

Early Planning for Retirement Association Ringwood Branch  
Contact Mrs. V. McGregor, P.O. Box 56 Ringwood ..... 876 1301

#### RETURNED SERVICES LEAGUE

16 Station Street, Ringwood Map Ref: Q9 ..... 870 6604

#### REVERSE GARBAGE TRUCK

Aldinga Hatchery, 22 Sherbrook Avenue, Ringwood ..... 879 1264  
Non profit resource centre. Collects and redistributes industrial  
waste as art and craft material. Materials are available to  
schools, kindergartens and general public.  
Clean scrap material wanted. Pick up arranged.  
Tuesday & Wednesday 10.00 a.m. to 5.00 p.m.  
Thursday & Friday 2.00 p.m. to 5.00 p.m.

#### RINGWOOD CROYDON ADVISORY SERVICE

For general information, referrals to appropriate help if needed  
and a listening ear, contact Ringwood Office in Ringwood Square  
Shopping Centre Monday to Friday 9.30 a.m. to 4.00 p.m.  
Saturday 10.00 a.m. to 12.00 noon ..... 870 3233

Croydon Office: 214 Mt. Dandenong Road, Croydon ..... 725 7920  
Monday to Friday 9.30 a.m. - 4.00 p.m.  
(THIS SERVICE IS FREE AND CONFIDENTIAL)

#### RINGWOOD COMMUNITY DEVELOPMENT COMMITTEE

Aims to improve and co-ordinate services for the people of Ringwood.  
Advises the regional body on F.A.C.S. and other grants from  
State Government. Contacts:  
Cr. Lillian Rosewarne ..... 870 3390  
Council's Community Support Officer ..... 870 4311



## SCHOOLS

### Primary Schools

Eastwood Primary School		
Alexander Road, Ringwood	Map Ref: Q13	870 6103
Heathmont Primary School		
Frances Street, Heathmont	Map Ref: U9	870 6098
Heathmont East Primary School		
Louis Street, Heathmont	Map Ref: V14	729 5439
Holy Spirit Parish School		
120 Oban Road, North Ringwood	Map Ref: F6	876 1103
Kalinda Primary School		
Kalinda Road, Ringwood	Map Ref: E12	876 3289
Marlborough Primary School		
Hardy Crescent, Heathmont	Map Ref: X7	870 3468
Mullum Primary School		
Panfield Avenue, North Ringwood	Map Ref: J9	870 2120
Norwood Primary School		( 870 8535
Warrandyte Road, Ringwood	Map Ref: L6	( 879 4015
Our Lady of Perpetual Help School		
Wilana Street, Ringwood	Map Ref: P7	870 7227
Ringwood Primary School		
Greenwood Avenue, Ringwood	Map Ref: R6	870 6047
Ringwood East Primary School		
Everard Road, Ringwood East	Map Ref: L11	870 6781
Ringwood Heights Primary School		
Aurum Crescent, Ringwood	Map Ref: L2	870 3050
Ringwood North Primary School		
Oban Road, North Ringwood	Map Ref: F6	876 3250
Southwood Primary School		
Maidstone Street, Ringwood	Map Ref: V4	870 4106
St. Francis De Sales School		
Bona Street, Ringwood East	Map Ref: O12	870 7801
Yarra Valley Anglican School		
Junior School, Kalinda Road, Ringwood	Map Ref: B14	876 1366
Tintern Church of England		
Girls Grammar Junior School		
90 Alexandra Road, Ringwood East	Map Ref: P14	879 4466

### Secondary Schools

Aquinas College		
Thomas Street, Ringwood	Map Ref: R7	870 3122
Eastern Secondary College (formerly Ringwood Technical School)		
Heathmont Road, Heathmont	Map Ref: S9	870 4555
Heathmont Secondary College		
Waters Grove, Heathmont	Map Ref: X7	879 3111
Maroondah Secondary College		
Brentnall Road, Croydon	Map Ref: H15	870 4551
Norwood Secondary College		
Byron Street, Ringwood	Map Ref: J8	870 5399
Parkwood Secondary College		
Tortice Drive, North Ringwood	Map Ref: C9	876 1633
Ringwood Secondary College		
Bedford Road, Ringwood	Map Ref: P9	870 2002
Tintern Church of England Girls' Grammar School		
90 Alexandra Road, Ringwood East	Map Ref: P14	879 4466
Yarra Valley Anglican School		
Kalinda Road, Ringwood	Map Ref: B14	876 1366

### Special Schools and Remedial Centres

* Heatherwood School		
Cnr. Witt Street and Maroondah Highway, Mitcham		874 4928
* Croydon Special Development School		
Dixon Avenue, Croydon		725 4933
* "Irabina" Autistic Children's Association Eastern Centre		
193 Bayswater Road, Bayswater		720 1118
* Yarra Valley Special Education Community Centre		
Kalinda Road, Ringwood		876 3241

### TAFE Colleges - Advanced and Further Education

<b>Outer East College of Technical and Further Education</b>	881 8888
Providing certificate, advanced certificate, associate diplomas and apprenticeship courses, and also off campus (correspondence) courses. Business, hobby and personal development short courses available each term. The College has campuses in Wantirna, Croydon, Lilydale Ferntree Gully and Healesville.	

### SCOUTS

A current listing is kept at the Civic Centre and by	870 4311
Ringwood Croydon Advisory Service	870 3233



## SELF HELP GROUPS

### C.O.S.H.

155 Lygon Street, Brunswick ..... 388 1777  
10.00 am. - 4.00 pm. Tuesday - Friday  
Postal Address: P.O. Box 159 Brunswick East.

For information and current contacts for a wide range of  
self-help groups, ring Collective of Self-Help Groups, ..... 650 1488  
Ross House, 247-251 Flinders Lane, Melbourne ..... 650 1455  
Tuesday to Friday 9.30 a.m. - 5.30 p.m.

### Outer East Head Injury Family Support Group

Offers support to the families of people who have Acquired Brain Damage.  
The Group meets monthly, providing a chance to discuss problems,  
and share ideas and techniques for dealing with them.  
Information on head injury and on services is available.  
Members also provide telephone support for one another.  
Community education is also a function of the group.

Contacts: Barbara Stephens ..... 762 5606  
Aileen Hewart ..... 877 4991  
Pat Gotlib ..... 870 8210

## SENIOR CITIZENS' CENTRES

### Ringwood Senior Citizens' Centre

Clubrooms in Greenwood Avenue, Ringwood ..... 870 1884

### Ringwood East Senior Citizens' Centre

Clubrooms in Laurence Grove, Ringwood East ..... 870 0289

### North Ringwood Senior Citizens' Centre

Clubrooms at Norwood Reserve, Warrandyte Road, North Ringwood ..... 879 2677

## SERVICE CLUBS

A comprehensive current listing is kept at the Ringwood ..... 870 3233  
Croydon Advisory Service and by the Civic Centre ..... 870 4311

## SOCIAL SECURITY, COMMONWEALTH DEPARTMENT OF

25 Ringwood Street, Ringwood ..... Map Ref: P5 ..... 871 2888  
Provides information about and processes all  
Social Security pensions, benefits and allowance  
payments for local residents. Limited social work  
service is available.

## SPORTING CLUBS

A current listing is kept at the Ringwood Croydon ..... 870 3233  
Advisory Service and by the Civic Centre ..... 870 4311

## SWIMMING POOL - RINGWOOD AQUATIC CENTRE

Jubilee Park, Reilly Street, Ringwood ..... Map Ref: T7 ..... 870 0519

## TELECOM AUSTRALIA

Provides information on all of Telecom's services  
Initial inquiries to be made to - ..... 724 2211

## TENANTS

For bond and relocation assistance contact;  
— Ministry of Housing ..... 879 5433  
— Maroondah Accommodation Service ..... 725 2188  
For information and advice on tenancy problems contact:  
— Outer East Tenants Information Service ..... 725 9152  
— Tenants' Union (Monday - Friday 9.30 a.m. - 1.00 p.m.) ..... 419 7774  
For information on supplementary rent assistance contact:  
— Department of Social Security ..... 871 2888

## THEATRE GROUPS

A current listing is kept at:  
The Ringwood Croydon Advisory Service ..... 870 3233  
and by the Civic Centre ..... 870 4311

## TRANSPORT

For information on bus, train, and tram routes and timetables contact:  
Transport Information Centre ..... 610 5265  
Monday to Saturday 7.30 a.m. - 8.30 p.m. Sundays 9.15 a.m. - 8.30 p.m.  
Rail - Ringwood Railway Station ..... 610 5265  
Taxis - Regal Taxi Service ..... 810 0222

## TOY LIBRARY

Every Friday 10.00 a.m. - 12.00 noon except School Holidays  
at North Ringwood Community House ..... 876 3421

## WARRANDYTE TOY LIBRARY

Warrandyte Squash and Community Centre,  
57 Yarra Street, Warrandyte.  
Contact: Carmen Janickie ..... 844 2046

## TWINS

Australian Multiple Births Association, Nunawading Branch Inc.  
The Nunawading Branch provides support and information to families living  
in the areas of Nunawading, Box Hill, Doncaster/Templestowe and Ringwood.  
President: D. Alexander ..... 842 2993  
Secretary: K. O'Leary ..... 876 4254



## UNEMPLOYMENT

D.O.M.E. - "Don't Overlook Mature Expertise" 882 4488  
405 Camberwell Road, Camberwell

A lobby and support group for unemployed people over 40.

Ringwood Youth Services Skillshare 870 2401

227-229 Maroondah Highway, Ringwood (above All Tools) Map Ref: P7

Provides support and a variety of services for young unemployed people. These services include financial, legal, accommodation assistance and referral. Also run employment related programs.

For Example - Employment Skills Programs

- Life Skill Activities
- Recreation Activities

Open normal business hours **except** Wednesday 1.00 p.m. to 5.00 p.m.

## VOLUNTEERING

### Eastern Volunteer Resource Centre

St. Pauls Parish House, Warrandyte Road, Map Ref: O7 870 7822

Eastern Volunteer Resource Centre is a non-profit community service organisation. A register is maintained of community projects and individuals seeking volunteer help. People who are seeking voluntary involvement are invited to contact the Co-ordinator, Ms Elizabeth Harding, between 10.00 a.m. to 1.00 p.m. Mondays, Tuesdays Thursdays and Fridays.

## WOMENS HEALTH

### Outer Eastern Womens' Health Service

Information and referral in the range of womens' health, including the areas of emotional/social health.

116A Mt. Dandenong Road, Ringwood East. 879 2199

## YOUTH ACCOMMODATION PROJECT (MAROONDAH)

Provides short term accommodation for homeless young people.

Secretary: Mr. Fred Stern 879 2675

Calls for accommodation must be directed to the regional service.

## YOUTH EMERGENCY ACCOMMODATION SERVICE

(Outer Eastern Region) Co-ordinator: Ms. Nan Morris 729 2022

A referral service which aims to assist homeless youth in this region

"Stopover" (24 hours) 347 0822

## YOUTH WORKER

Council's Youth Worker is available to assist

local young people in a variety of ways. She can be contacted

at the Civic Centre. 870 4311

## YOUTH CLUBS

A current listing is kept at the Ringwood Croydon 870 3233

Advisory Service and also by the Civic Centre 870 4311

## EMERGENCY TELEPHONE NUMBERS

Emergency (Police, Fire, Ambulance) 000

Ambulance (24 hours) 11 440

Council 870 4311

(After Hours) 870 6636

Fire 11 441

S.E.S. 823 1122

Police 11 444

Ringwood Police 870 6377

Alcohol and Drug DIRECT line 614 1999

(counselling, information and referral service)

Poisons Information 345 5678

Dental Emergency 347 0222

Maroondah Hospital 879 3333

Box Hill Hospital 895 3333

Life Line 662 1000

Personal Emergencies (24 hour Telephone Crisis,

General Counselling and Referral Service) 347 6466

Water 614 3841

Gas 652 5111

S.E.C. (Ringwood) 870 2344

Environment Protection Authority (Pollution Complaints) 651 4444

Doctor

(Please fill in)