

# Seven Delightful & Valuable Ringwood Estates Called **BESTPART, PARADISE, HILL TOP, GREENWOOD, CREEK, STATION, and SCHOOL ESTATES**

These Nestle amidst the Hills and Valleys of Beautiful Ringwood District

No need to go to distant Belgrave when you can climb Ringwood Hills at half the cost and distance from Melbourne.

## TITLE CERTIFICATE



ALSO

**GOODLUCK  
ESTATE**

AT

**CLARINDA**

(See Page 17)

When the Roads are Made this Estate will be about  $\frac{1}{2}$  a mile from the proposed **NEW RAILWAY STATION** between Oakleigh and Clayton (12 miles from Melbourne)

**So Buy Before  
Prices Jump Up**



See  
Separate  
**PRICE LIST**  
for  
The Various  
**LOTS**  
and  
**ESTATES**  
and  
**HOUSES**  
Herein.

**E. & O. E.**

All Lots  
Well Drained



One of many Ringwood Views

- (1) All Blocks and Houses herein to be offered subject to being unsold and acceptance by Vendor
- (2) **Title Guaranteed on Full Payment of the Purchase Money to the Vendor.**
- (3) Shop Sites in Ringwood. See Ringwood Station Estate Plan on Page 12. This side of Line will want its own Shops. Every other Suburban Railway Station has shops on both sides of the Station, so will Ringwood. Will Sell or Lease.
- (4) Prices do not include cost of Road Making unless otherwise stated on Plan.
- (5) See Terms on Page 5 and on Back Cover.

**Give Page Number in referring to Lot and Properties herein.**

All Contracts of Sale to be made out on Vendor's Contract, the printed details of which cannot be altered without Vendor's written consent.

Page One



# CREEK & PARADISE & GREENWOOD ESTATES

See Pages 13, 14, and 15

Within one mile of both Heathmont and Ringwood Railway Stations and Ringwood Township, with its Post Office, Public Hall and Five Churches, and Public Utilities These Estates are within the Borough of Ringwood. Only 15¼ miles from Melbourne.

Amongst the Hills and Orchards, and Ever Verdant Country.

Paradise is on one of the Best of Government made Roads. A Large Model State School within a mile of Paradise, and within 400 yards of Greenwood Estate.

Creek Estate is actually on the famous Dandenong Creek, which has never been known to dry up in the severest drought, and is also on a Government Made Road. Paradise Estate is close to the same Creek.



A Panoramic View from Ringwood State School. This school, across country, is less than a mile from Paradise and Greenwood Estates.

## RINGWOOD

is celebrated for:—

- (a) Beautiful Scenery, Views, Walks, Drives & Reserves.
- (b) Progress.
- (c) Industry and
- (d) Health.

RINGWOOD is within the Suburban Area, having all Modern Conveniences—inter alia

- (e) Electric Light and Power.
- (f) Electric Trains.
- (g) Day and Night Telephone Service (at Ringwood).
- (h) A Fine Post Office (at Ringwood).
- (i) Large Public Hall.



A number of Allotments are beautifully timbered with native trees as above.

## RINGWOOD

Is only 15¼ miles from Melbourne, with 38 Fast Electric Trains during week days, and a Special Service on Sundays. The time running is only 38 minutes from Melbourne to Ringwood.

New Town Hall to be erected in Ringwood.

Day and Night Telephone Service and Electric Light available.

Ringwood is supplied with water from the O'Shannessy Scheme. Ringwood is to have its own reservoir, so that water can reach all Estates.



THE first thing you will notice on these Estates is the delightful scent of the eucalyptus trees—pungent, refreshing, uncontaminated.

It is hard to realise you were but a few minutes before treading the streets of Melbourne, with its 800,000 inhabitants, and that a man can spend his days in a crowded office or shop, and his nights in his sleep-out, breathing the "incense from the everlasting hills."

To spend such a night is to awake in the morning feeling "fit;" what part does this feeling of "fitness" play in the Battle of Life? Think it over. It's well worth while.

The next thing you observe is the rosy-cheeked children—real children. Ringwood is famous for its apple orchards, the rosy-cheeked apples of Ringwood are known all over Australia and on the London market, and the rosy children are said to be a direct result of the rosy apples, but the unbiassed observer would like to attribute a portion of the praise to the pure, uncontaminated air, pure water, good food, and plenty of sleep. "Early to bed and early to rise," is a slogan not unknown to the children of Ringwood—they are simply natural, healthy children—the best variety in the world.

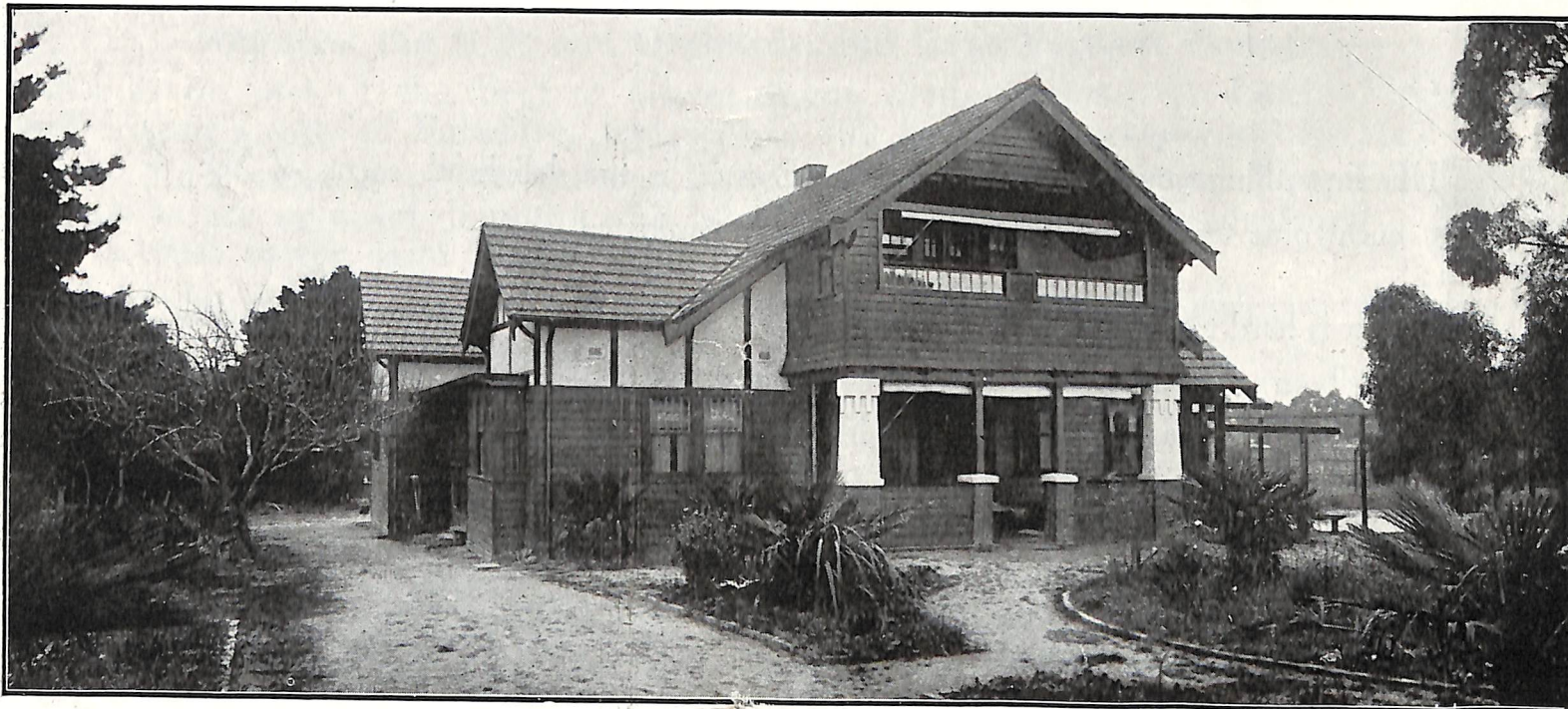
Are **your** children natural and healthy? Have they rosy cheeks and good health? If not, think it over, there's a remedy. Old Dame Nature comes cheaper than the chemist, and her handiwork is a "joy to the eyes of the beholder."

**WHAT IS SAID ABOVE OF RINGWOOD IS ALSO TRUE OF  
PARADISE AND GREENWOOD AND CREEK AND HILLTOP  
ESTATES.**

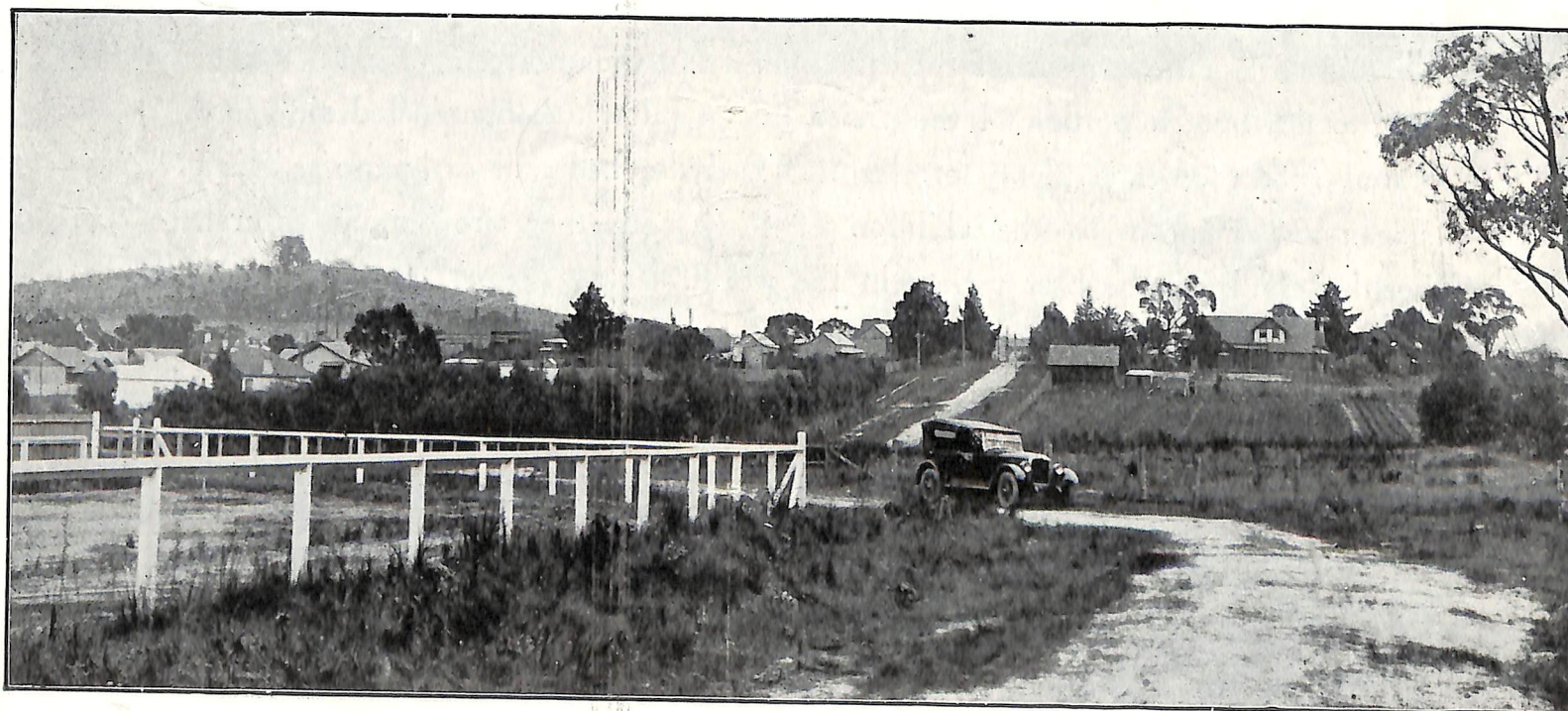


This Magnificent Home for Sale, £4,865, Cash or Terms. Highly Polished Floors, Oiled Hardwood outside, Cement Roughcast, Red Tile Roof, standing on 305 feet fronting Greenwood Avenue, by 180 feet deep. About 400 feet from Ringwood Railway Station (nearly opposite Methodist Church). Get further particulars on typed sheets. This Price (£4,865) includes a two-roomed Dwelling and Garage combined. This House is Lot "F" fronting Greenwood Avenue, see Station Estate on Page 12. Lot "G" thereon is the Garage and Dwelling.

530  
*Que*  
*in*  
*installments*  
*5. and 7*  
*year*



A Delightful MODERN HOME *Huntly Bros.*



This is another View of the above House with Garage and Cottage combined.



As per Lot G facing Greenwood Avenue on Station Estate as per page 12.

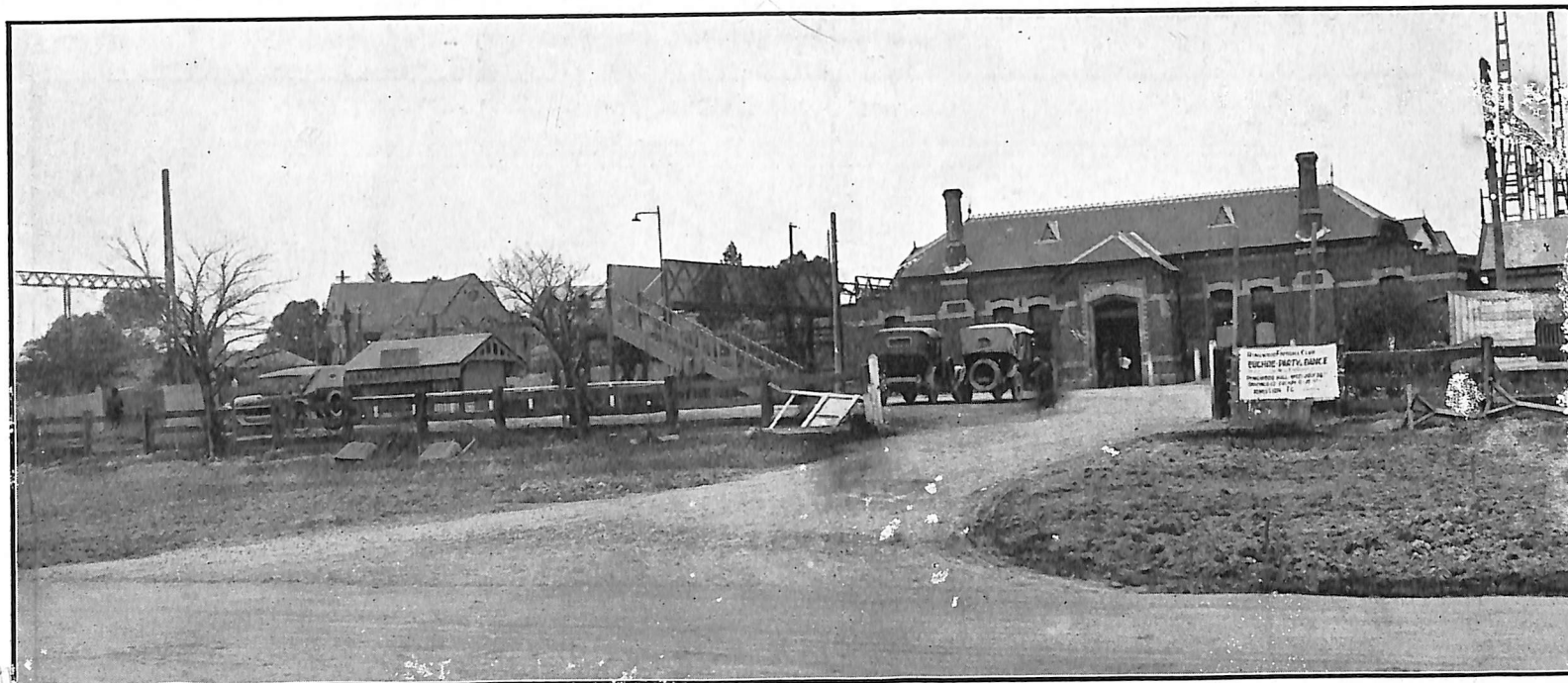
Another View in the District.

↑  
 MODEL STATE SCHOOL GROUNDS

GREENWOOD AVE  
 LOOKING NORTH.



**NOTE.**—Ringwood is the Natural Civic Centre beyond Box Hill. It is the Junction of all Roads and Railways from Warburton, Healesville, Fern Tree Gully, Warrandyte, Bayswater and Dandenong. In fact, it can be said that all roads lead to Ringwood.



**RINGWOOD RAILWAY STATION,**



## **EASIEST OF TERMS and A Variety to Choose from**

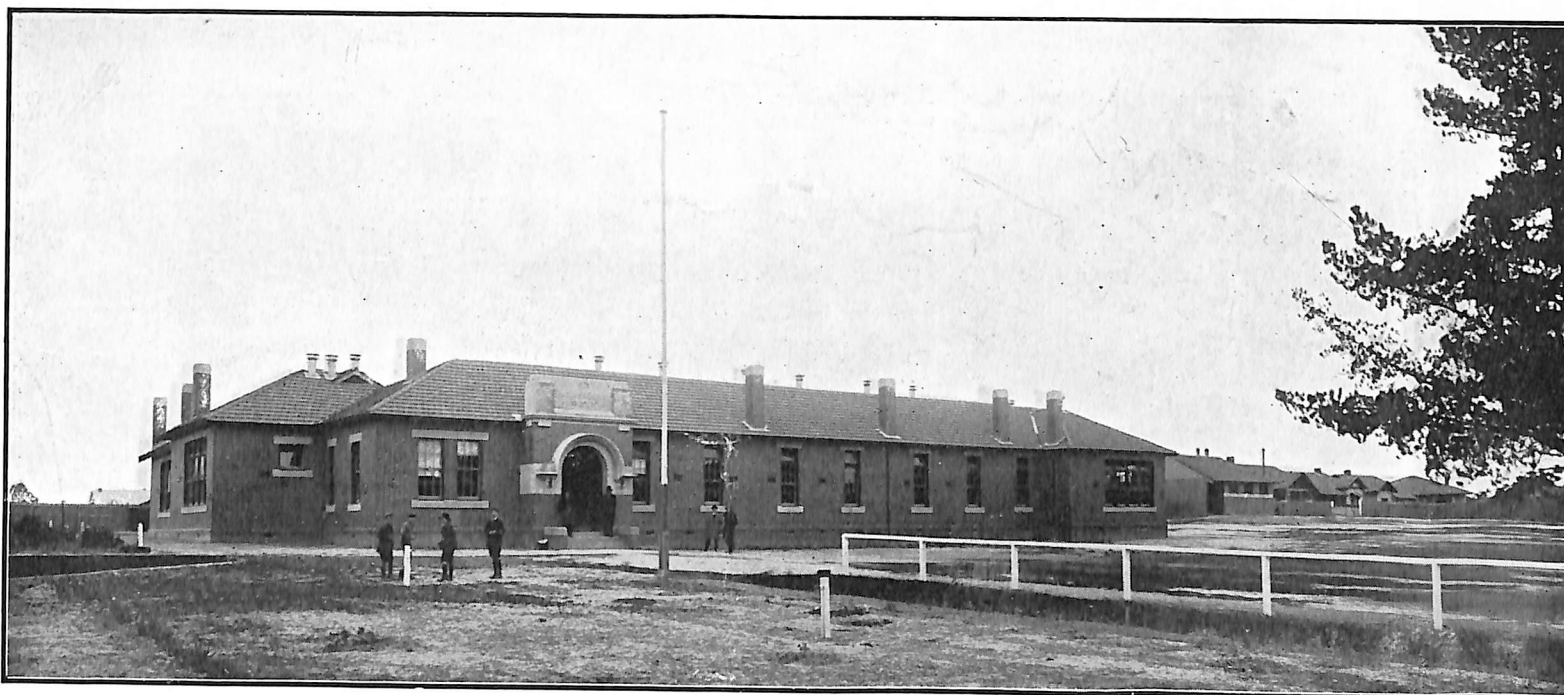
- (a) **Small Deposit and Instalments can be arranged.** Instalments to be paid every Calendar Month, with interest at the rate of  $6\frac{1}{4}$  per cent. per annum. Balance to be paid at end of 5 years.
- (b) or All Cash within 90 days of date of Contract free of interest and a rebate off each allotment of £5 (five pounds sterling).
- (c) or Half Cash and 24 equal monthly payments free of interest.

At the end of each month the number of pounds owing at  $1\frac{1}{4}$ d. each will equal  $6\frac{1}{4}$  per cent. interest per annum.

THE ABOVE APPLIES TO ALL ESTATES AND HOUSES.



**NOTE—The great development of House Building in Ringwood is the keynote to its wonderful advancement. In 4 months Plans were passed at the new Borough offices to the extent of £16,000 (this amount is exclusive of Government contracts).**



### **RINGWOOD STATE SCHOOL**

Within three-quarters of a mile of Paradise and Creek Estates.  
Within 400 yards of Greenwood Estate.  
Actually adjoins Bestpart and Station Estates.



### **RINGWOOD COOL STORES**

Packed with thousands of cases of Rosy Apples—that make Rosy Cheeks.



- NOTES:—(a) The Lots are all numbered and thus are easily found.  
 (b) So Go Out, Inspect for Yourself. Picnic on the spot.  
 (c) Day and Night Telephone Service and Electric Light available.  
 (d) Paradise and Creek Estates are on Canterbury and Wantirna Roads, two of the tourist roads from Melbourne to the Mountains.

### BANKS IN RINGWOOD.

**L**OOK at the picture on the next Page, note the Three Banks—The State Savings Bank, The Bank of Victoria, The English, Scottish and Australian Bank. Note the **solid** construction of the buildings. Bankers are shrewd, look-ahead men. They don't put solid buildings like this in suburbs **without a future**. It wouldn't pay. That's the only question a Banker really ever considers:—"Will it pay?"

### SHOPS IN RINGWOOD.

Glance at the shops in the picture on next page—you can get "everything you want in the Ringwood shops." This is the proud assertion of the Ringwood traders—their prices are moderate prices—family prices. Like men of common sense they have "gathered together and talked it over." They are out to "keep the business in the town" by reasonable prices—and they are doing it.

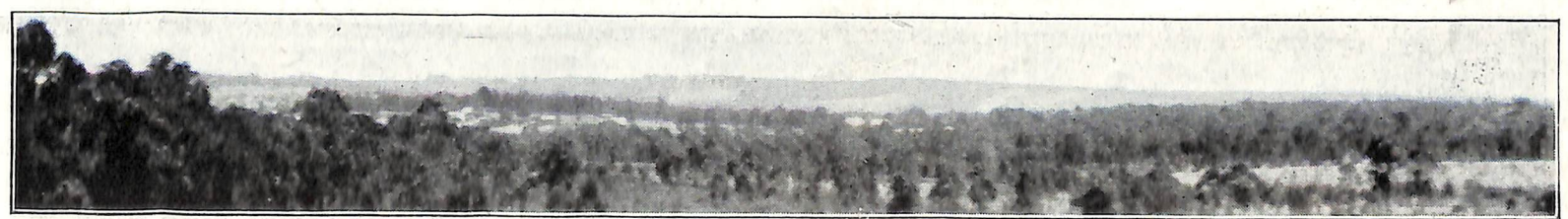
### A MODEL STATE SCHOOL IN RINGWOOD.

Look at the School (it is recognised as the best equipped in the State)—an up-to-date, modern, well-ventilated building, twenty minutes across country.

Two other new State Schools just opened within Ringwood Borough, besides a private school. Efforts are being made to get a High School.

Buy an allotment for your child as an investment, it's better than putting it in a Bank.

Again we say, "Think it over," and for good measure throw in the 3,000 year old Chinese proverb—"If you **hate** your children cram them with dainties," and remember at the same time that children can be crammed with "dainties of the mind" in the shape of too many picture shows in ill-ventilated buildings at night when they should be fast asleep.



Another Ringwood Panoramic View



**NOTE—Ringwood and Heathmont are rated at 2/- in the £.  
Adjoining Shires and Boroughs are paying 3/- in the £.**

BANK

BANK

BANK

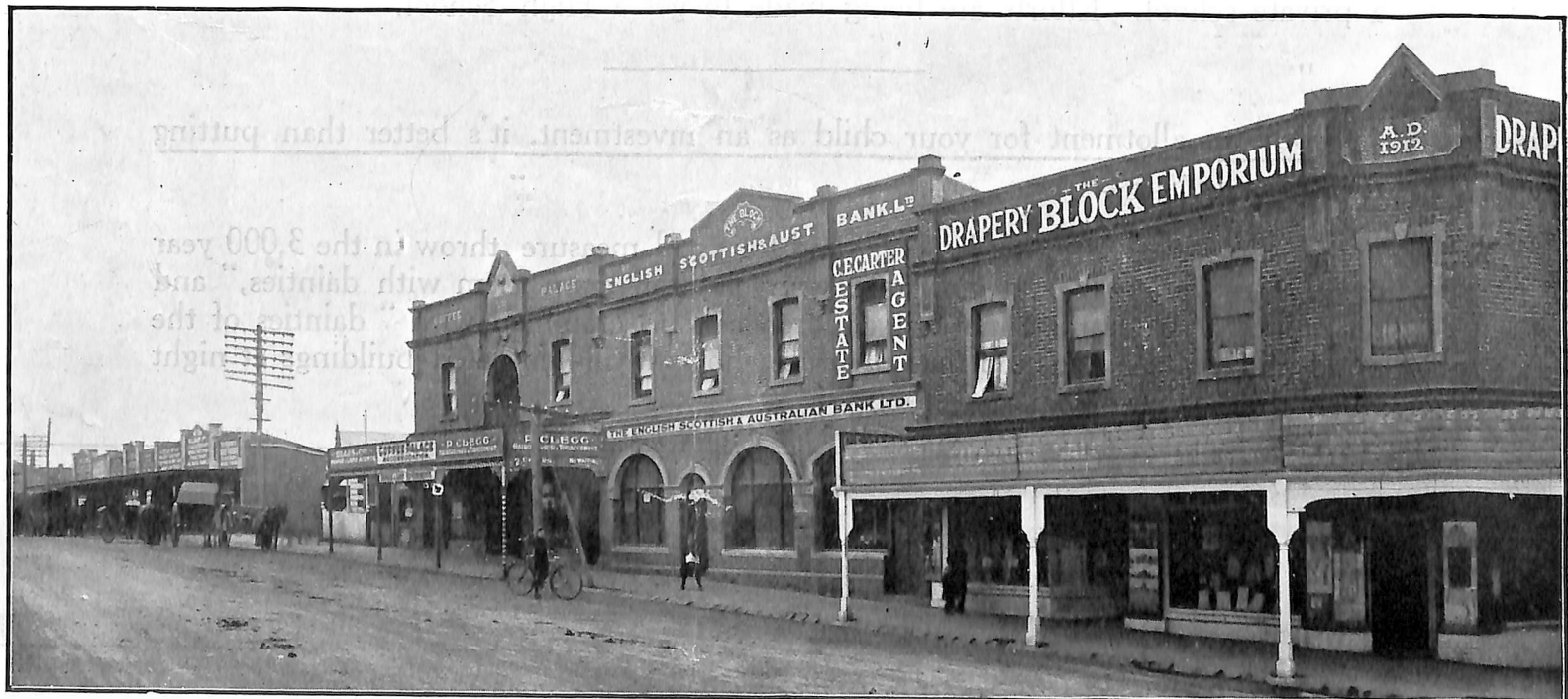


### RINGWOOD'S THREE SOLID BANKS

—Banks don't build premises like this in suburbs without a **future**. *Take the Hint.*

Since the above was Photographed 12 months ago, the New Post Office and two big Shops have been built on above frontages.

BANK



**RINGWOOD'S SHOPPING CENTRE—Land here is Selling at over £40 a foot, and increasing in value daily.**



# These Two Cottages in Delightful Ringwood For Sale

## PART OF RINGWOOD STATION ESTATE

See Plan on Page 12.

---

---

**Fronting Made Roads  
and Paths.**

VALUABLE LAND.

**Good Drainage.**

**Price £725**

(Terms)

---

---



---

---

**Electric Light and Water  
Laid on to House.**

**Price £725**

(Terms)

This House stands on Lot  
"K," fronting Pitt Street  
(see Station Estate Plan on  
Page 12).

---

---

**Fronting Pitt Street, Ringwood,** South Side, about 500 feet from Subway.  
Made Road and Paths. 4 Rooms.  
Land 44 x 132. Close to Centre of Ringwood.  
Within 5 Minutes Walk of Railway Station, Shops, Hall, etc.

*Long. Sons.*

---

---

**Made Roads and Paths.**

**Good Drainage.**

VALUABLE LAND.

This House stands on Lot  
"J," fronting William Street.  
(See Station Estate Plan on  
Page 12).

Fronting Made Road and Paths.

**Price £825**

---

---



---

---

**Electric Light.**

**Water Laid On**  
(Inside and Out).

NEW BATH HEATER.

COPPER AND TROUGHS.

SPLENDID POSITION.

GOOD VIEWS.

VERY CLOSE TO STATION.

**Price £825**

(Terms)

---

---

**Fronting William Street, Ringwood.** 500 feet from Ringwood Railway Station, Hall and Post Office.  
Well Built. Lath and Plaster Inside. Stucco Outside. All Conveniences.  
Verandahs Back and Front. Land 50 x 127.  
4 Rooms. Passage through House. Pantry. Wash-house. Bathroom, with new Chip Heater.  
Fruit Trees. Very close to the Ringwood Railway Station.

*Kenworthy.*



# Plan of RINGWOOD SCHOOL ESTATE

## BUILDING CONDITIONS

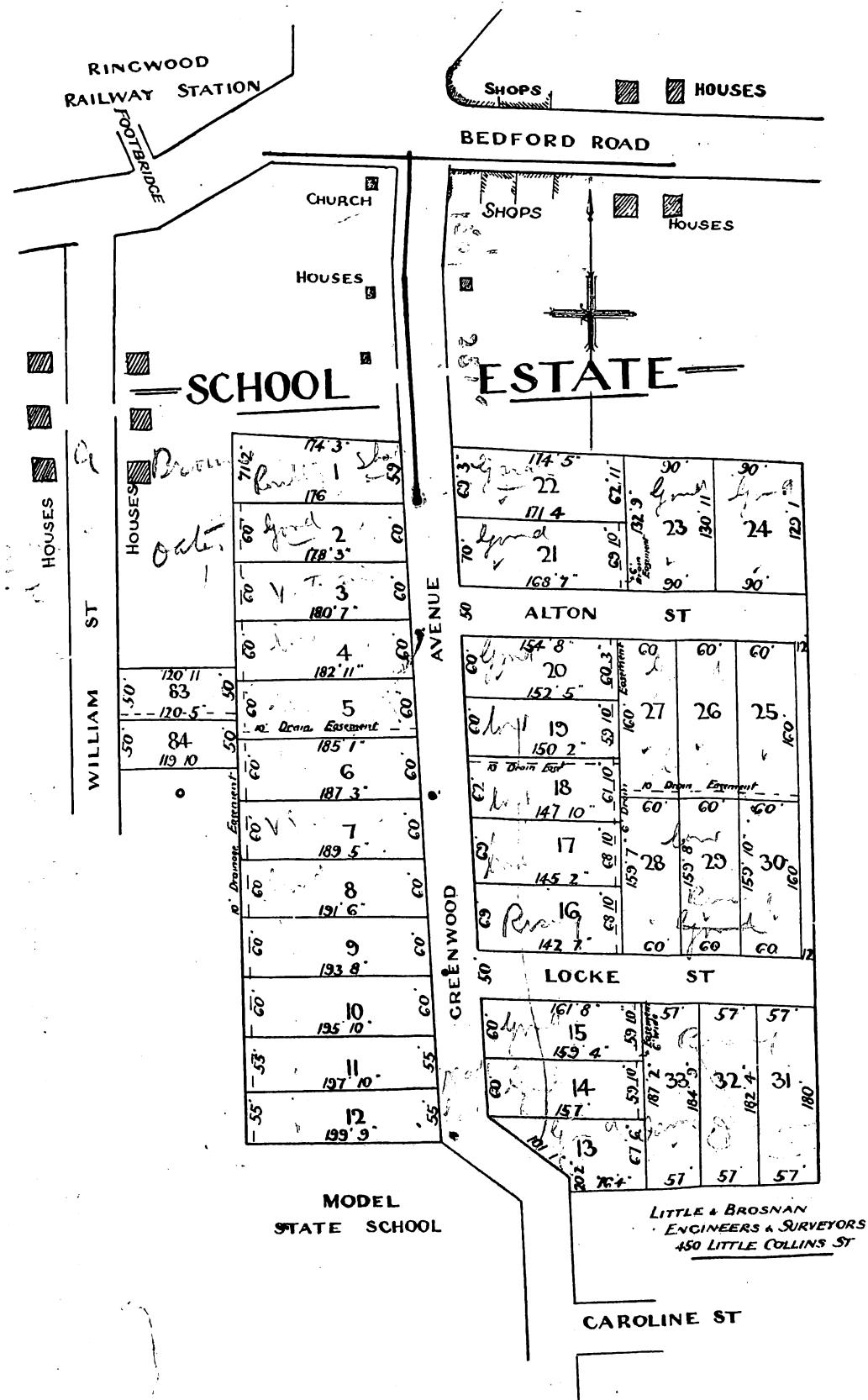
Minimum Cost of Dwelling-house, Fencing and Out-houses must not be less than £700.

Removal of Soil or Clay not permitted.

Removed Buildings Cannot Be Erected on this Estate.

## NOTES

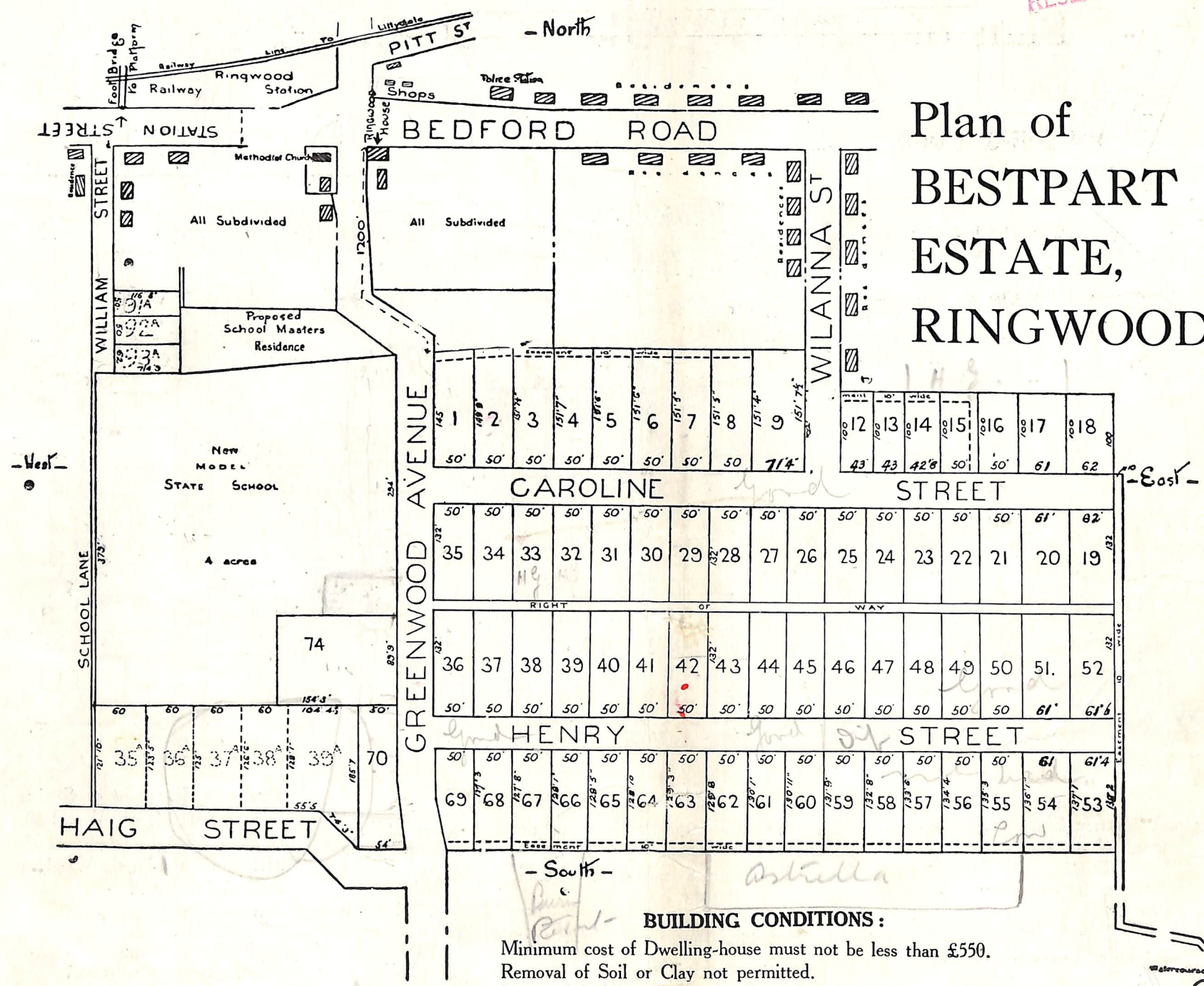
1. Observe how close to School, Church and Railway Station these Lots are (600 feet from the Station).
2. A Beautiful Modern Road has been made from gutter to gutter, with Cement Gutters and Made Paths, cost of which, not exceeding 20/- per foot, has to be added to the prices quoted.
3. A Perfect Drainage Scheme has been built, note the drain as marked on the plan.
4. Water, Electric Light and Telephone available.
5. Vendor reserves the right to close Alton Street.
6. Lots 20 to 27 inclusive are not for sale.
7. For Prices and Terms see separate Eureka Price Book.





RINGWOOD HISTORICAL RESEARCH GROUP

# Plan of BESTPART ESTATE, RINGWOOD



**BUILDING CONDITIONS:**

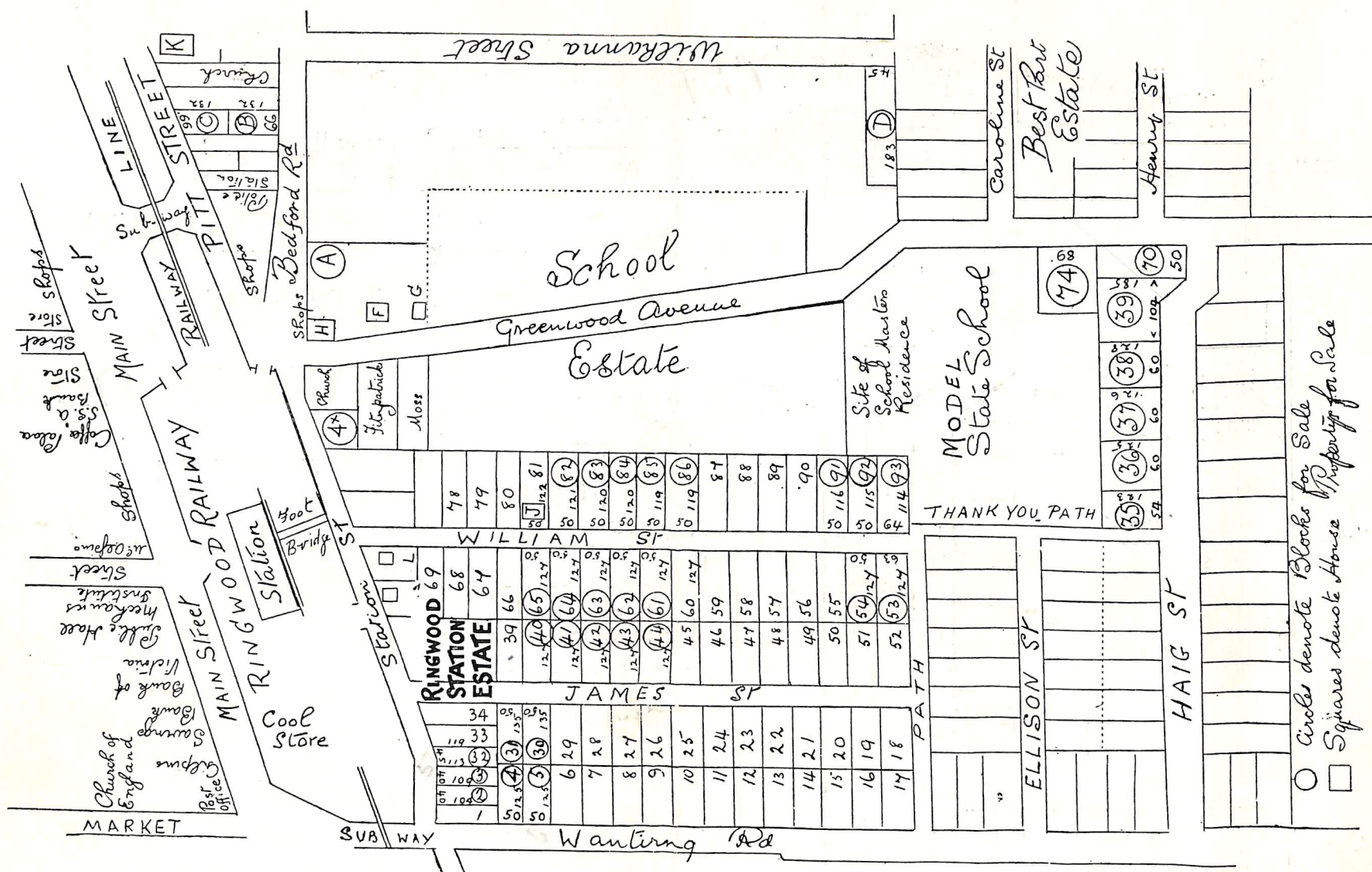
Minimum cost of Dwelling-house must not be less than £550.  
 Removal of Soil or Clay not permitted.  
 Removed Buildings Cannot Be Erected on this Estate.

1. The above Estate is on a Plateau, with views of Hills surrounding it.
2. It is very close to the Model State School. Children can safely attend it without risk of Motor Traffic.
3. Electric Light, Phone, and Water can be made available.
4. Lots Nos. 53 and 61 are not for Sale.
5. No. 1 Lot is only 1,400 feet from Railway Station.

6. Beautiful Roads (from gutter to gutter) and Cemented Gutters and Made Paths right up to the Estate for Greenwood Avenue and Wilanna Street are made. As the Roads are not at present made on Bestpart Estate, there is nothing to add for it at present.
7. Glorious Views. Well Drained.
8. The following Lot Nos. are Sold:—1 to 12, also 20 to 49, also 54, 66, 67 and 68.
9. For Prices and Terms see separate Eureka Price Book.
10. Perfect Drainage.



# Plan of RINGWOOD STATION ESTATE



**Water and Electric Light available to all above Lots.**

## BUILDING CONDITIONS:

Minimum Cost of Dwelling-house must not be less than £550.  
Removal of Soil or Clay not permitted.  
Removed Buildings Cannot Be Erected on this Estate.

**Drainage Easement** on Station Side of Lots 84, 63, 41 and 30, and on the bottom end of Lots 64, 31, 3 and 2, and on the Wantirna Road side of Lot 2.

1. The Lot on Station Street, adjoining Lot "L," has a frontage of feet to Station Street and adjoins the Rechabite Hall. The Price is £1,250, and is good buying for a Shop Site.

2. Lot "L" is right on the corner with a frontage of feet to Station Street and 140 feet to William Street. This is an ideal Shopping Corner and is cheap at £1,250.

3. Lots "A" and "4X" are Shop Sites.

4. Lot 93 is a wonderful block to build a shop for school requisites and soup kitchen on, as it juts right into the school grounds, with say 600 scholars. (The same applies to Lot 74.)

5. On lots "K" and "J" are two cottages for sale, see illustrations on page 9.

6. Numbers within circles are Allotments for Sale. Letters within squares or next squares are Houses for Sale.

7. NOTE:—There is a Drainage Easement on Lot Numbers 84, 63, 64, 41, 30, 31, 3 and 2.

8. Lots "B" and "C" were bought to constitute an arcade from Bedford Road to Pitt Street, they are 66 feet wide. Four shops with a frontage of 20 feet can be built at each corner, leaving a pathway from street to street 26 feet wide; along this pathway, on both sides, other shops can be erected, thus forming an arcade. These two lots are good buying for £1,056. This arcade will be a short cut to the Subway, and will be largely availed of.

9. Glorious Views off Lots 35 to 39, fronting Haig Street.

10. The Council are spending about £10,000 in making Nine New Streets in and around the above Estate.

11. A Beautiful Modern Road (from gutter to gutter) with Cemented Gutters and Made Paths, cost of which not exceeding 20/- per foot, has to be added to the Prices quoted. This applies to Lots on Station, Haig, William and James Streets. There is no cost of road making to be added to Lots facing Wantirna and Bedford Roads and Pitt Street, as these are made and paid for.

12. For Prices and Terms, see separate Eureka Price Book.

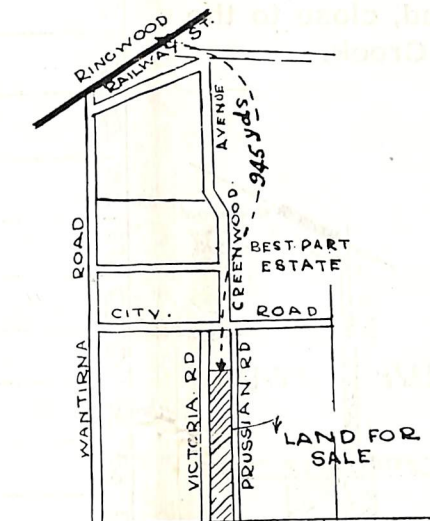
13. Vendor will Sell or Lease Shop Sites, including those facing Station Street and Railway Station.

14 Perfect Drainage System.



# GREENWOOD ESTATE

945 yards from Ringwood Railway Station  
200 " " " Model State School



Locality Sketch.

**DIDNT  
PROCEED.**

### BUILDING CONDITIONS :

Minimum Cost of Building must not be less than £450 on this Estate.  
Removed Buildings cannot be erected on this Estate nor Soil Removed.

60'	157'	60'
60'	1	60'
60'	2	60'
60'	3	60'
60'	4	60'
60'	5	60'
60'	6	60'
60'	7	60'
60'	8	60'
60'	9	60'
60'	10	60'
60'	11	60'
60'	12	60'
60'	13	60'
60'	14	60'
60'	15	60'
60'	16	60'
60'	17	60'
60'	18	60'
60'	19	60'
60'	20	60'
60'	21	60'
60'	22	60'
60'	157	60'
30' R.O.W.		

ROAD  
PRUSSIAN

(a) Lots 10 to 22 must be Inspected by the Buyer.  
Lots 1, 2, 6, 7, 8 are Sold.

(b) There is a proposal to do away with either Victoria or Prussian Road so as to reduce road making. The Vendor reserves the right to agree to this proposal, which will advantage the Buyer and will probably increase the size of the Block and the width of the Road.

(c) Electric Light, Phone and Water about 600 feet away from Lot No. 1.

(d) No Cost of Road Making to be added at present, as this has not yet been done.

(e) For Prices and Terms see separate Eureka Price Book.

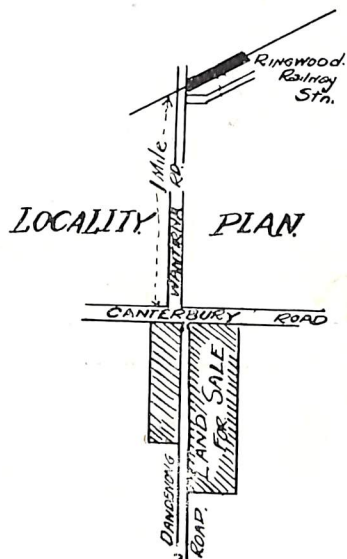


Canterbury

Road

# PARADISE ESTATE

One mile from Ringwood Railway Station on Government made road, close to the ever flowing Dandenong Creek.



58'	58'	58'	58'	57'9"	57'9"	57'9"	57'9"	57'9"	57'9"	50'
120'	2	3	4	160'	5	6	7	8	9	10
58'	58'	58'	58'	57'9"	57'9"	57'9"	57'9"	57'9"	57'9"	57'9"
59'	23'1"		47	59'	173'4"		11	173'4"		46
59'		48	59'	59'	12		45	59'	59'	59'
59'		49	59'	59'	13		44	59'	59'	59'
59'		50	59'	59'	14		43	59'	59'	59'
59'		51	59'	59'	15		42	59'	59'	59'
59'		52	59'	59'	16		41	59'	59'	59'
59'		53	59'	59'	17		40	59'	59'	59'
59'		54	59'	59'	18		39	59'	59'	59'
59'		55	59'	59'	19		38	59'	59'	59'
59'		56	59'	59'	20		37	59'	59'	59'
59'		57	59'	59'	21		36	59'	59'	59'
59'		58	59'	59'	22		35	59'	59'	59'
59'		59	59'	59'	23		34	59'	59'	59'
59'	23'1"	60	59'	59'	24		33	59'	59'	59'
59'				59'	25		32	59'	59'	59'
					50'	Luck St.	50'			50'
					59'	26	173'4"	31	173'4"	59'
					59'	27		30		59'
					100'	28		29		100'
							173'4"		173'4"	
										50'

Lots 5 to 46 cannot be sold at present. Apply before doing so.

Lots 1 to 4 and 47 to 60 inclusive are for Sale, for which there will be no Cost for Road Making as it is a Government-made Road.

There is a New House on Lots 26, 27, 28, 29, 30, 31, which with House can be bought for £1,350.

FOR PRICES AND TERMS SEE SEPARATE EUREKA PRICE BOOK.

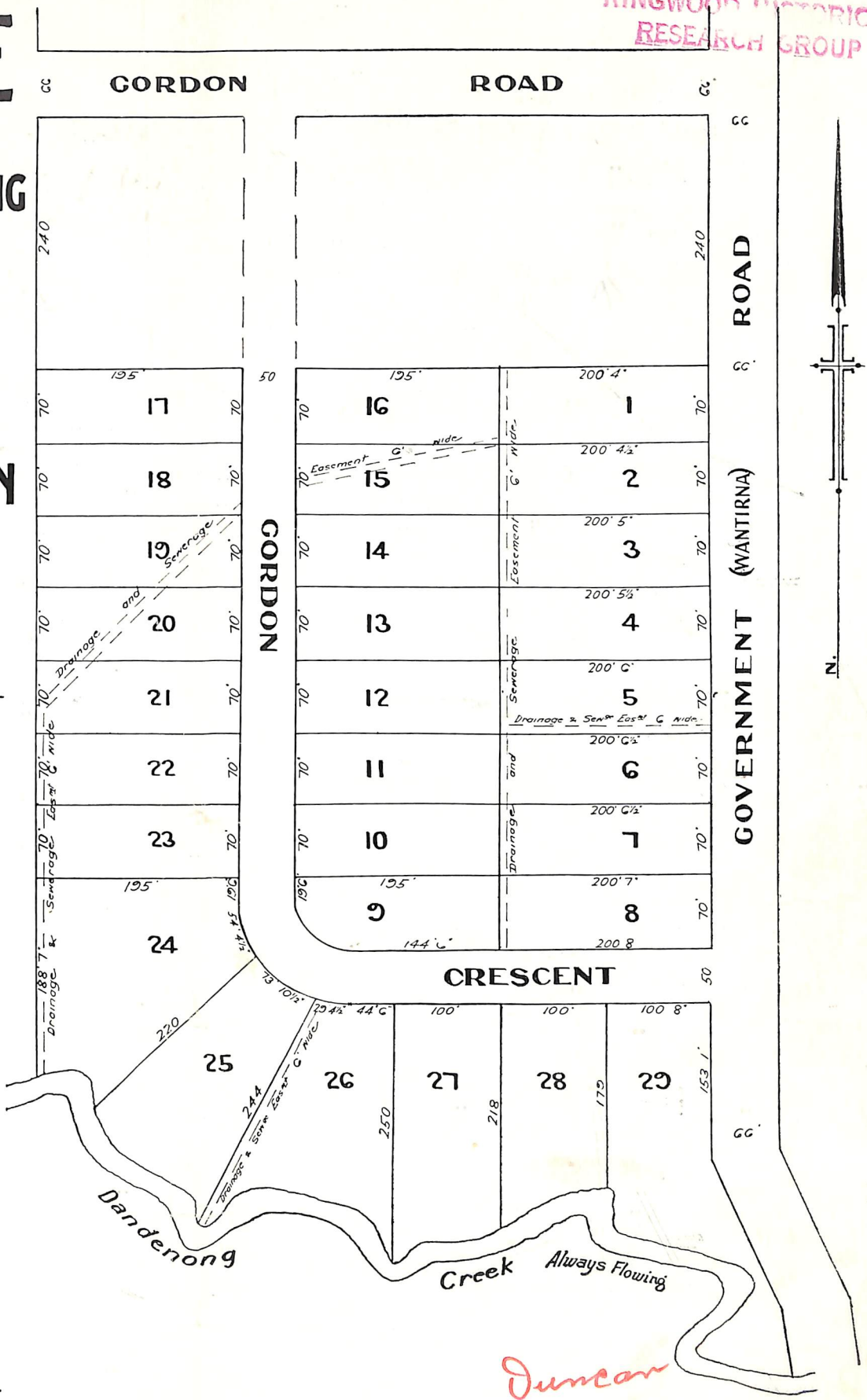
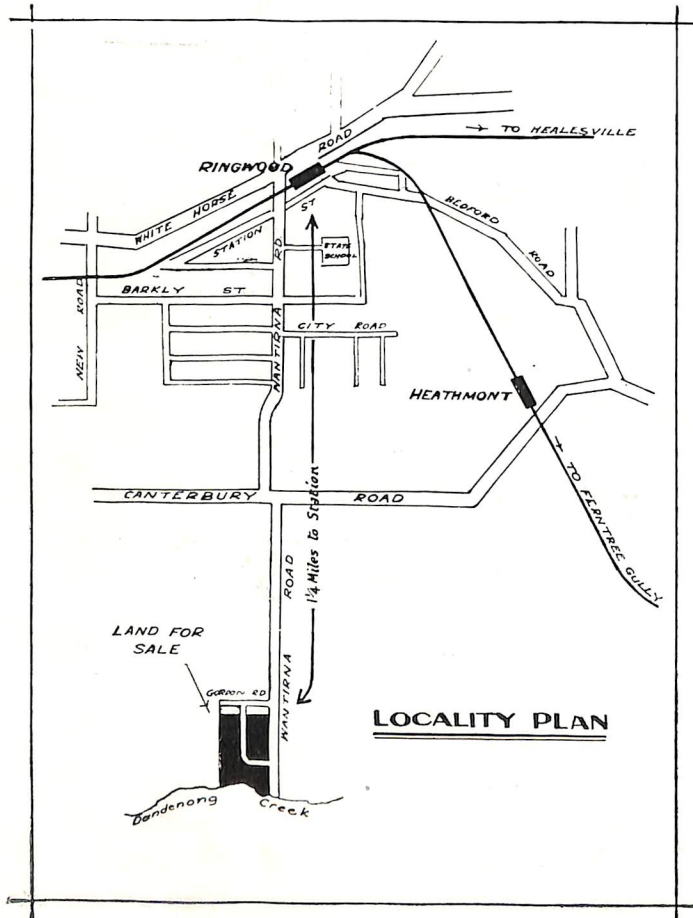
## BUILDING CONDITIONS:

Minimum Cost of Dwelling must not be less than £450.  
Removed Buildings Cannot Be Erected on this Estate.

*Henty Bros.*



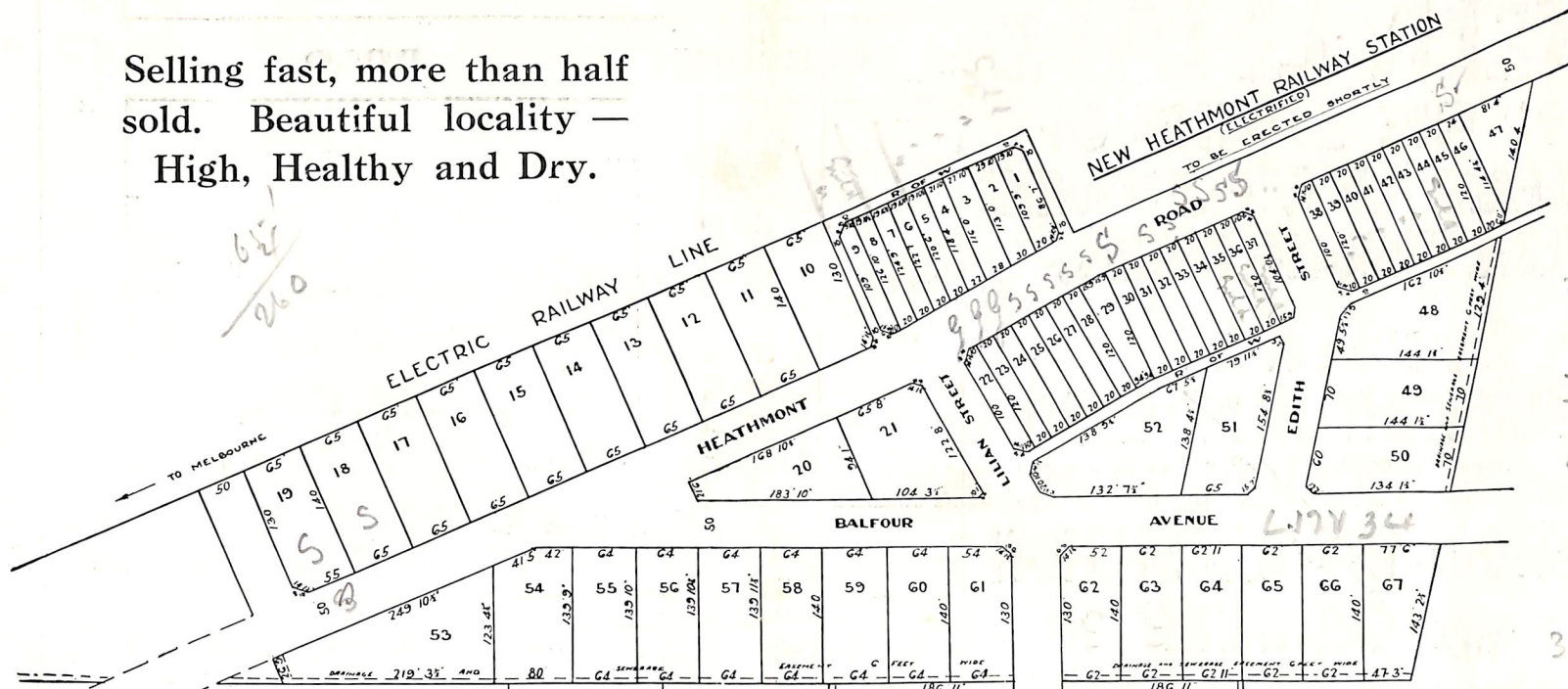
**CREEK ESTATE**  
**ON THE BANKS OF**  
**THE FAMOUS EVERFLOWING**  
**DANDENONG CREEK,**  
**AND ON A**  
**GOVERNMENT MADE ROAD**  
**RUNNING STRAIGHT TO THE**  
**RINGWOOD RAILWAY STATION**  
**AND TOWNSHIP**  
**WITH ALL ITS PUBLIC**  
**UTILITIES**



**Lots 24 to 29 are ideal Week-end Blocks, Have your own Fish Pond.**  
**Removed Buildings Cannot Be Erected on this Estate.**  
**Minimum Cost of Dwelling must not be less than £300.**  
**For Prices and Terms see Separate Eureka Price Book.**  
**Only 1 1/4 miles from Ringwood Railway Station.**  
 There will be no charge for Road-making for Lots 1 to 8 inclusive, as they are on a Government made Road; there will be on the remaining lots when the roads are made.

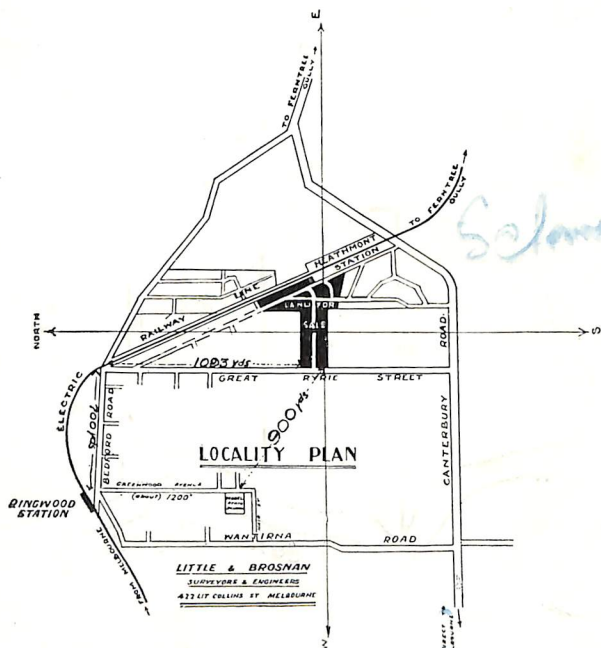


Selling fast, more than half  
sold. Beautiful locality —  
High, Healthy and Dry.

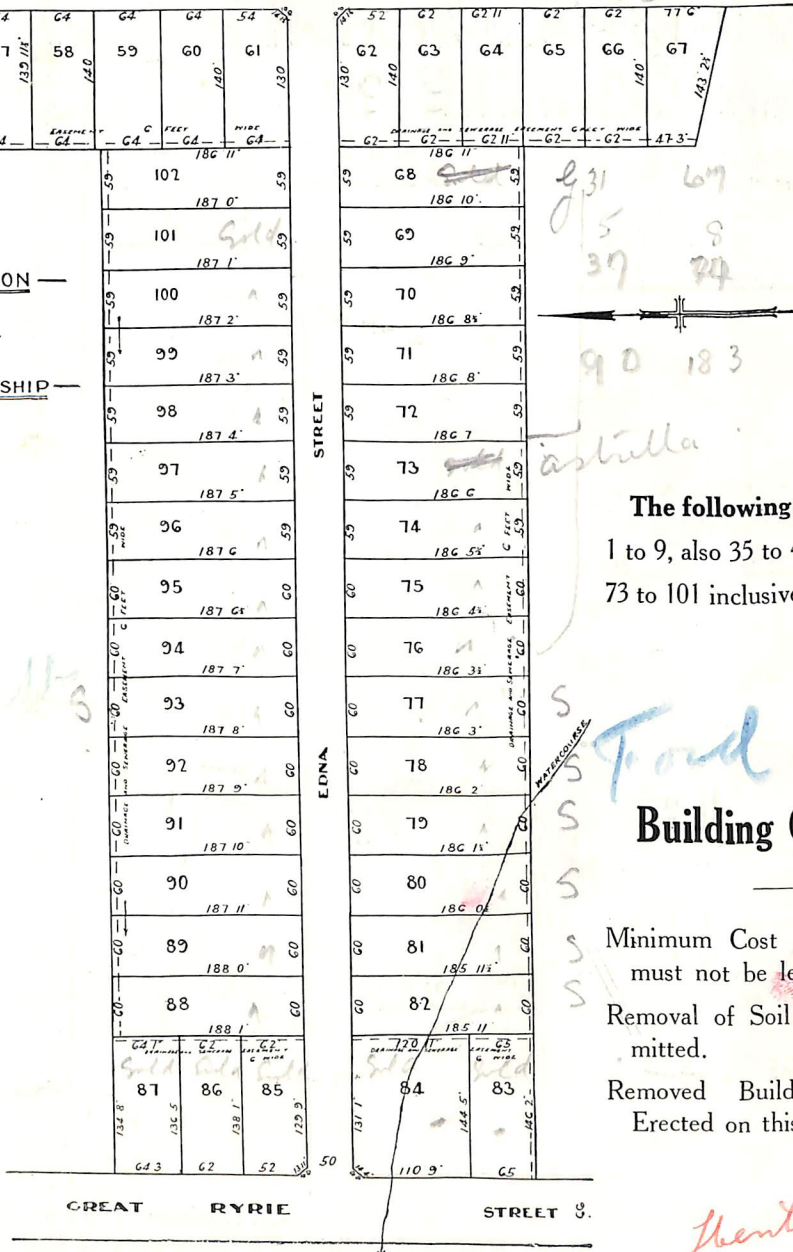


### HILL TOP ESTATE

— ABUTTING UPON THE NEW HEATHMONT RAILWAY STATION —  
— WITHIN THE RINGWOOD BOROUGH —  
— THIS ESTATE IS ABOUT ONE MILE FROM THE RINGWOOD TOWNSHIP —



- (a) Electric Light and Phone at Heathmont Station.
- (b) Electric Light, Phone and Water at Corner of Ryrie Street and Bedford Road.
- (c) Good Drainage. High Ground. Good Views.
- (d) For Prices and Terms see Separate Eureka Price Book.
- (e) Roads are formed ; the future making, however, will be a charge on the Purchaser.



The following Lots are Sold :—  
1 to 9, also 35 to 44, also 62, 63, also  
73 to 101 inclusive.

### Building Conditions

Minimum Cost of Dwelling-house  
must not be less than £450.  
Removal of Soil or Clay not per-  
mitted.  
Removed Buildings Cannot Be  
Erected on this Estate.



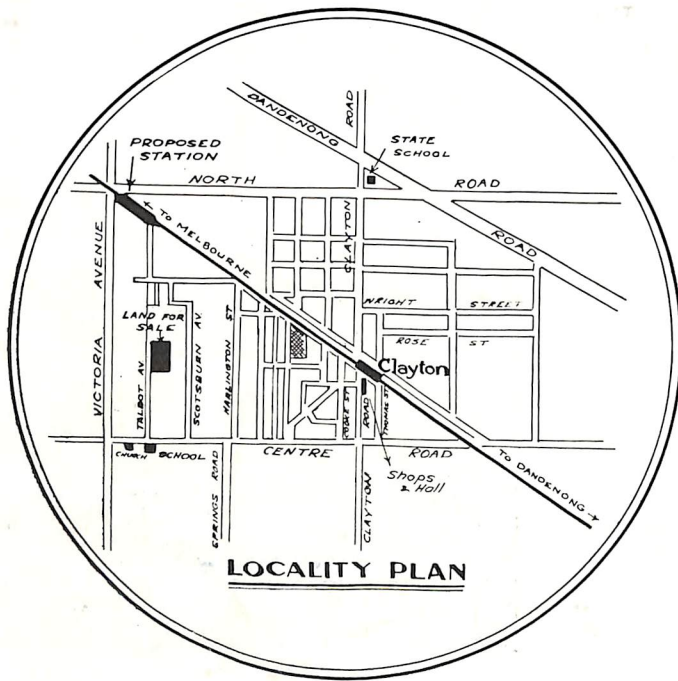
RINGBROOK HISTORICAL RESEARCH GROUP

# GOODLUCK ESTATE CLARINDA

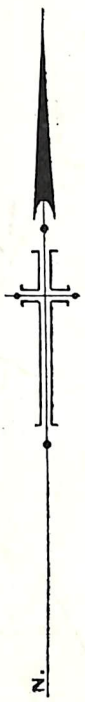
CLARINDA IS A PROPOSED  
NEW RAILWAY STATION

*between*

## OAKLEIGH & CLAYTON RAILWAY STATIONS.



73'	145'	55'	55'	55'	55'	55'	55'	55'	55'	50'
	<b>1</b>	146'	<b>41</b>	<b>40</b>	<b>39</b>	<b>38</b>	<b>37</b>	<b>36</b>	<b>35</b>	<b>34</b>
73'	145'		55'	55'	55'	55'	55'	55'	55'	55'
<b>GOOD STREET</b>										
59'	145'	55'	55'	55'	55'	55'	55'	55'	55'	147'
	<b>3</b>	147'	<b>26</b>	<b>27</b>	<b>28</b>	<b>29</b>	<b>30</b>	<b>31</b>	<b>32</b>	
67'	59'		67'	59'						
56'	56'	147'	25	24	23	22	21	20	19	18
	<b>5</b>									
56'	56'	56'	56'	56'	56'	56'	56'	56'	56'	56'
<b>LUCK STREET</b>										
73'	145'	55'	55'	55'	55'	55'	55'	55'	55'	146'
	<b>8</b>	146'	<b>10</b>	<b>11</b>	<b>12</b>	<b>13</b>	<b>14</b>	<b>15</b>	<b>16</b>	
73'	145'		55'	55'	55'	55'	55'	55'	55'	55'
<b>TALBOT AVENUE</b>										
1237'										



**CENTRE ROAD**

Golf Links

Store

Clarinda Road

Church

State School

Good Dark Sandy Soil. The Vendor imposes no Building Conditions. Water down Centre Road. Electric Light available. About 1/2 mile from proposed new Station.

Store at the Corner of Centre and Clarinda Roads.

Cost of Roads not included in prices

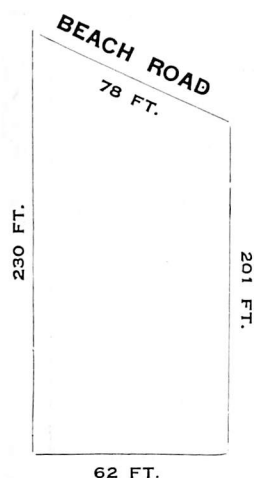
*out-*



# The Vendor offers a Special Building Lot right on Hobson's Bay

Glorious View of Bay  
Electric Light and Telephone and Gas close handy.

Shape of Block for Sale

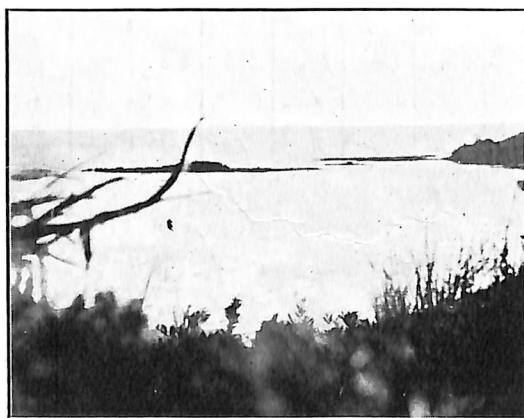


THE BLOCK  
STANDS HERE

THE BLOCK ABUTS UPON THE ROAD.

Room on this Block for House,  
Shop and Tennis Court. It is  
almost level.

See the Shops close handy.

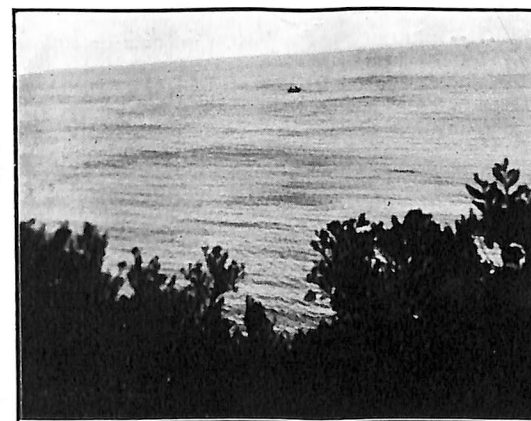


VIEW OF THE BAY AND ROCKS.

Fishing Boats take shelter here. Fish can be bought  
at this spot. The Block for Sale is right opposite this  
view.

This is one of the Last  
of the Blocks available  
Facing the Bay.

**Price £950**  
TERMS



SEE THE BOAT AND TWO IN IT FISHING.

Schnapper, Flathead, Garfish and other fish caught  
here.

Plenty of Road Traffic to watch and to  
interest you. Delightful Bay Opposite,  
with its shipping and fishing. Beautiful  
Sandy Beach, Good Bathing Spot.



You can build your own Bathing Box and Boat House.  
ACTUAL VIEW OF BLOCK COVERED WITH TI TREE.

Only a Road between Beach and Block,  
and the road is good; it is asphalted  
and kerbed, there is therefore no road-  
making to pay for.



**NOTE**—Ringwood has a rarefied atmosphere such as is generally found only in the mountains, and the reason of this is that Ringwood is 500 feet above the sea level.

**New Fire Station just installed in Ringwood by Metropolitan Fire Brigade.**

*Just a Few Facts of Ringwood's Stability*

**COOL STORES CAPACITY, 60,000.  
TURNOVER EXCEEDS 100,000 CASES PER ANNUM.  
BEST EQUIPPED STATE SCHOOL (3 in the District).  
POST OFFICE COST APPROX. £4,000.  
THREE BANKS.  
CRICKET AND FOOTBALL OVALS. TENNIS COURTS.  
MAIN STREET SHOP VALUES, OVER £40 PER FOOT.  
PICTURE SHOWS AND POPULAR ENTERTAINMENTS.  
A FINE BIG TOWN HALL RIGHT OPPOSITE RINGWOOD RLY. STN.**

**FIGURES—RAILWAY:—**

1919	-	-	£21,000 yearly.
1922	-	-	£35,000 „
1924	-	-	£50,000 „

Note that in five years the returns have more than doubled themselves. Watch the next two years.

**FARES: 4/9 Week, Workmen  
1st Quarterly, £5/5/6  
2nd „ £3/18/6**

Two New Railway Stations just opened within the Borough of Ringwood to wit:—East Ringwood and Heathmont Railway Stations.

Seven New Roads just being made round Ringwood Railway Station.

Grounds just purchased with Big Lake. Swimming Baths to be installed.

**39 MINUTES TO TOWN.  
PARK RESERVES, 26 ACRES.  
38 TRAINS A DAY.**

Telephone Underground Cables laid about 2 years ago are now found insufficient to carry the extra lines required by new phone Subscribers. Such is the rapid advance of the district.

**RINGWOOD is the Most Pushing and Progressive Part of Victoria—  
Just created a Borough because of its Importance and Potential  
Wealth and Position.**

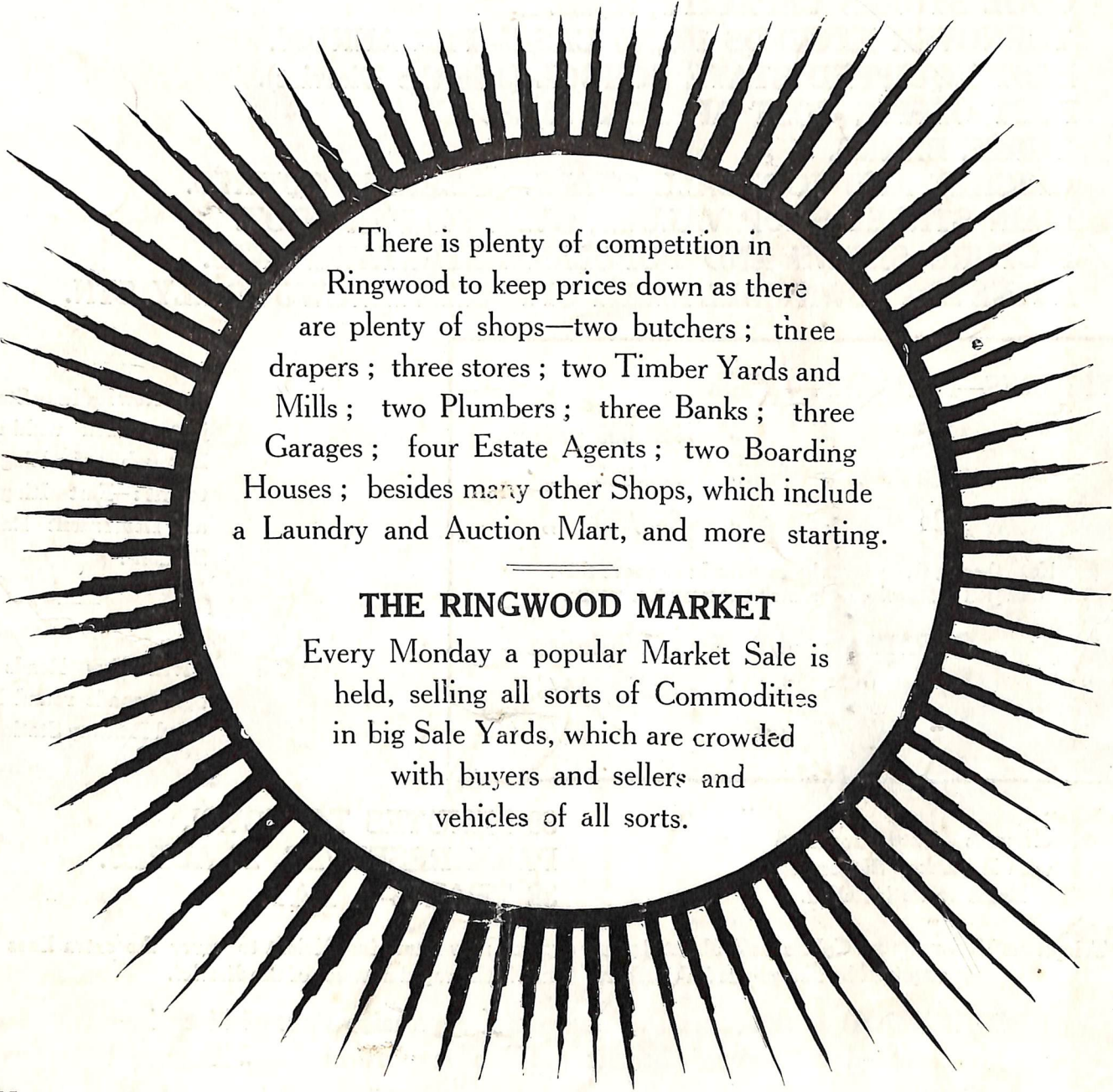
**IT HAS FOUR PROGRESS LEAGUES ,(working in harmony for the common good)**



- (1) Invest your Savings and your Money in Land, it's more profitable and safer than any other investment.
- (2) Title Certificate.
- (3) See Special Remarks on each Plan.
- (4) Prices of Lots does not include Cost of Road Making.
- (5) All Lots of all Estates are Well Drained.
- (6) E. and O.E.

YOU can Buy the Estates herein on the easiest terms, as follows :

- (a) Small Deposit and Monthly Instalments can be arranged. Balance payable within 5 years of date of Contract.
- (b) Instalments and Interest to be paid every Calendar Month. Interest at the rate of  $6\frac{1}{2}$  per cent. per annum to be paid on the balance owing at the end of each month.
- (c) Or all Cash paid within 90 days of Contract free of interest and a rebate of £5 per lot off the purchase price.
- (d) Or Half-Cash within 60 days of Contract and the 24 equal Monthly Payments for the other half, free of interest.



There is plenty of competition in Ringwood to keep prices down as there are plenty of shops—two butchers; three drapers; three stores; two Timber Yards and Mills; two Plumbers; three Banks; three Garages; four Estate Agents; two Boarding Houses; besides many other Shops, which include a Laundry and Auction Mart, and more starting.

### THE RINGWOOD MARKET

Every Monday a popular Market Sale is held, selling all sorts of Commodities in big Sale Yards, which are crowded with buyers and sellers and vehicles of all sorts.

#### BUILDING CONDITIONS APPLYING TO ALL ESTATES HEREIN :

- (1) Minimum Cost of Dwelling-house is stated on each plan herein.
- (2) Removal of Soil or Clay not permitted.
- (3) Removed Buildings Cannot Be Erected on these Estates.

Give the Page Number in referring to Lots and Houses herein.

People who live in Ringwood are Healthy, Wealthy and Wise.

Page Twenty