

copy

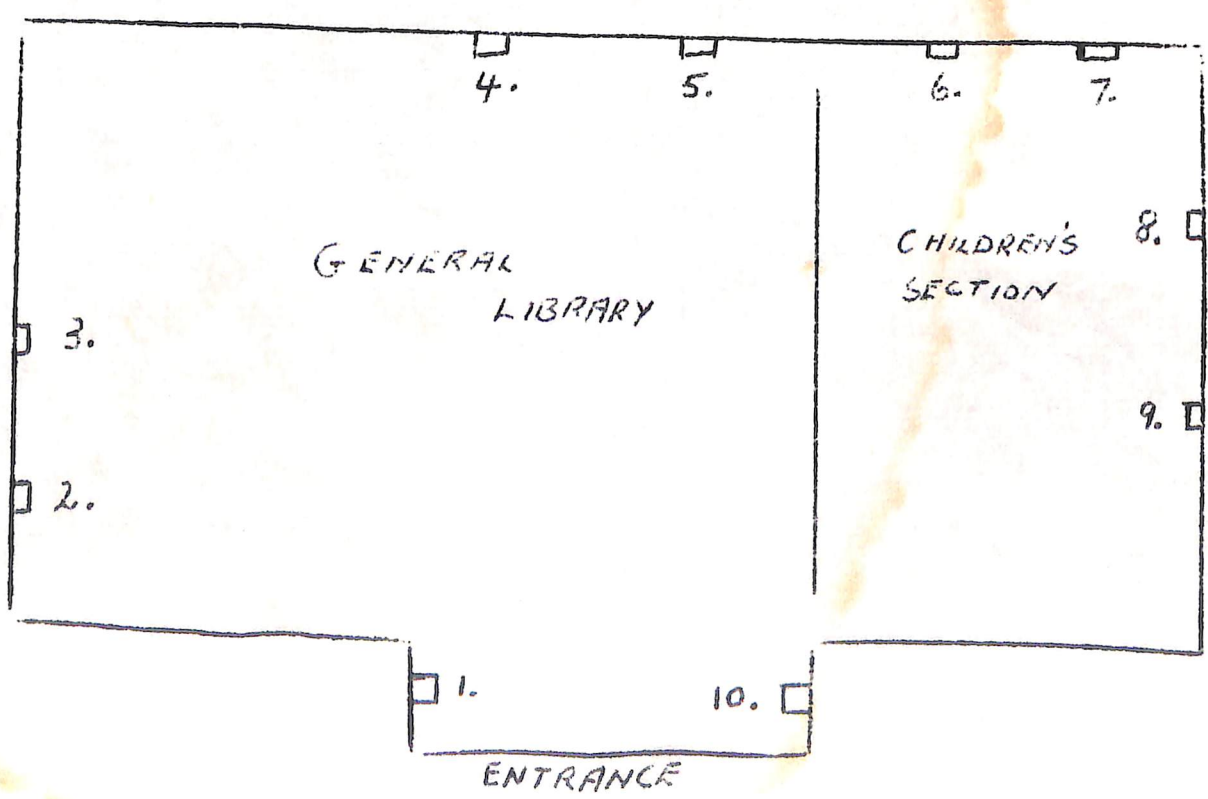
CITY OF RINGWOOD
INFORMATION ON PAINTINGS
RINGWOOD LIBRARY

In 1973 the Ringwood City Council arranged for a number of paintings of early Ringwood to be attached to the walls of the Ringwood Library. Some of these were kindly donated to the Council by the Ringwood Historical Research Group and others have been in the Council's possession for many years.

As the City will celebrate its 50th Jubilee in October, 1974, many people will be interested to learn more about their City's history.

This leaflet has therefore been prepared to provide appropriate descriptions and general information concerning each painting.

The following plan shows the position of each painting and the attached list gives further details concerning location, painters, etc.



- 2B
1. Laneway alongside the "Mail" Office in Adelaide Street before the buildings on left were demolished to make Civic Place, 1959.
By Margaret Robbie.
Donated by Ringwood Historical Research Group.
 2. Home of W. Unsworth now in Tamar Street.
By W. Unsworth 1912
 3. Munro Street 1957.
By Margaret Robbie.
Donated by Ringwood Historical Research Group.
 4. Residence of J. Williams, Mullum Road near Glencairn Avenue.
By Gordon Speary, Ringwood East. 1961.
Donated by Ringwood Historical Research Group.
 5. Ringwood Lake.
By Roger Webber. 1960
Donated by Ringwood Historical Research Group.
 6. Antimony Mine, East Ringwood.
By W. Unsworth 9.11.1912.
Donated by R. Pullin.
 7. Clock Tower Ringwood, 1961.
By Leslie Sands.
 8. Scene of Ringwood Range after Bushfires January 1962.
By Ken McFadyen.
Donated by Ringwood Historical Research Group
 9. Antimony Mine - Early Ringwood.
By Jack Montgomery.
 10. End of Nelson Street before going through to New Street.
By Margaret Robbie.
Donated by Ringwood Historical Research Group.

RINGWOOD; Place of many eagles

Section 1. PAINTINGS

- ✓ 1. Antimony mine, Ringwood, by W.Unsworth, 1912. Library Collection
2. An area of natural bush, near Loughnan's Hill, by J.Crocker, c.1925. Library Collection.
- ✓ 3. The site of Eastland shopping centre in 1912, with Ringwood Street in the foreground, by M.Robbie. Library Collection.
4. Illuminated scroll presented to Mariannie Thomson on her retirement after 30 years as Postmaster, 1 August 1913.
5. A North Ringwood vegetable garden, at the 3 mile boundary, by V.Gunn, c.1970. The Artist.
6. The North Ringwood store at the corner of Oban and Warrantdyte Roads, by N.W.Saunders, c.1940. Stella Pake.
7. Deserted house on the hill, probably in the neighbourhood of Quamby, by Arnold Shore, c.1913. Ethel Rooney.
- ✓ 8. Beales cherry orchard, on the east side of Loughnan's Hill, by R.Webber, c.1946. June Jones.
- ✓ Cover 9. Memorial clock tower, originally sited at the intersection of Warrantdyte Road and Maroondah Highway, by L.Sands, 1963. Library Collection.
- Trs. 10. Ringwood rifle range, after the bushfires of 1962, by K. McFadyen. Library Collection.
11. Ringwood Lake, by R.Webber, c.1946. Library Collection.
12. Unsworth's old house (now in Tamar Street), by W.Unsworth, 1912. Library Collection.
13. The antimony mine (from old photographs), by J.Montgomery. Library Collection.
14. Treescape in Nelson Street (before going through to New Street), by M.Robbie, c.1920. Library Collection.
15. Houses and bushland in Munro Street, by M.Robbie, c.1920. Library Collection.
16. House of J.Williams in Mullum Road, near Glencairn Avenue, by G.Speary, 1931. Library Collection.

+ 3 (?) more

In Committee Room
Civic Centre Ringwood

TEN PAINTINGS HANDED OVER — Early Local Works

Ten paintings of historical interest by Ringwood artists including two which are about 50 years old are to be presented to Ringwood Council by the local Historical Research Group.

TRAFFIC COUNT

The Group told the last meeting of the Council that it had been collecting oils and water-colors of particular local interest for eventual display in the Municipal Library when established.

As this project was some years away, however, the Group said it wanted to offer the paintings to the Council now for hanging somewhere at the Town Hall.

Accepted

Cr. B. Hubbard, urging that the offer be accepted, said there was plenty of suitable wall space along the public gallery in the Council Chamber.

Cr. M. Deuter moved and Cr. Hubbard seconded a motion to accept the paintings with thanks.

weaness!

★

Mr. L. Sands, of Bonview Avenue, whose Melbourne exhibition of paintings has just concluded, is organising the Art Show to be held at Antonio Park State School in Whitehorse Road on Saturday, 8th April, from 10 a.m. to 5 p.m. Artists exhibiting will include G. Underwood, G. Spauzen, G. Mansell, L. Ferguson, G. Eddy, J. Fawley and A. Gray. Pottery will be by Allen Lowe. Members of the Warrandyte Arts and Crafts and the Ferntree Gully Arts Society will also exhibit.

Collection now hangs in
Committee Room of Civic Centre.

1992