

NATURE STUDY EXERCISE BOOK

PUPIL.....

COMMENCED.....

GRADE.....

Summer in the Garden.

During the hot weather of February we don't plant anything.

But we keep our garden tidy by pulling up all the dead plants.

These dead plants should be burnt. We should also water our garden after sun-down. In between waterings it is a good plan to scarify the soil round the plants to prevent evaporation. If you water plants when the sun is hot they will shrivel and die.

The Scattering

beasts and people, these are forget-me-nots, grass-seeds and burrs.

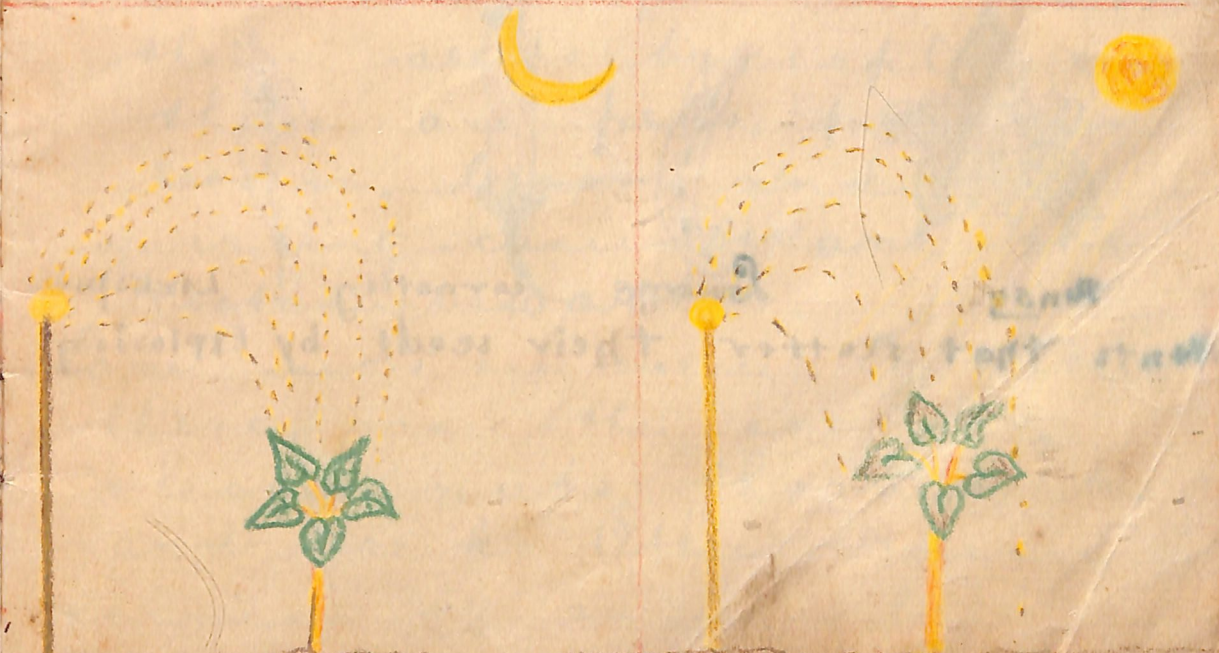
These seeds have hooks. Mistle-toe seeds are scattered by birds; the seeds stick to the birds beak.

Lastly seeds are scattered by the wind. These are the thistle, dandelion, cape-weeds, larkspur and carnation; and many other kinds of plants & flower-seeds.



Evaporation

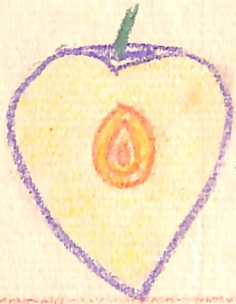
No Evaporation.



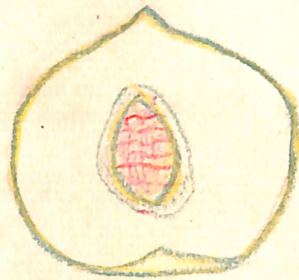
The Scattering of seeds.



Apricot.



Plum



Peach



Black Berry.

Plants that
drop their
seeds.



Pansy



Pea



Carnation



Cardamom

Plants that scatter their seeds by Explosion.

The Scattering of seeds.

Every plant tries to scatter (their) its seeds over the world. But there are different ways for this to be done. Some drop their seeds; these are fruit-trees and many plants with heavy seeds. Some plants scatter their seeds by explosion; these are peas, pansies, locum, broom and the squirting-cucumber and the costamunderwattle. Some seeds are carried by water; these are the coconut, sheak nuts, thorn apples and docks. Other seeds are carried by animals birds,

Autumn Gardening

While the weather is still warm and dry and before the rains of autumn the flower gardens must be watered every two days. Climbing roses will thus be encouraged to send out long shoots. The climbing roses against the wall on the North and may now be tacked because the sun is not strong enough to burn the long tender shoots. These may be made to grow for another month until they are yards long. It is from these new shoots that we get our next years roses.



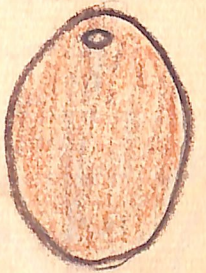
She-corn.



Thorny-Apple

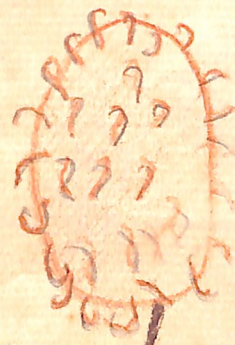


Docks



Coconut.

Plants that spread their seeds by ^{water}



Bethurst



Burr



mistle-toe.

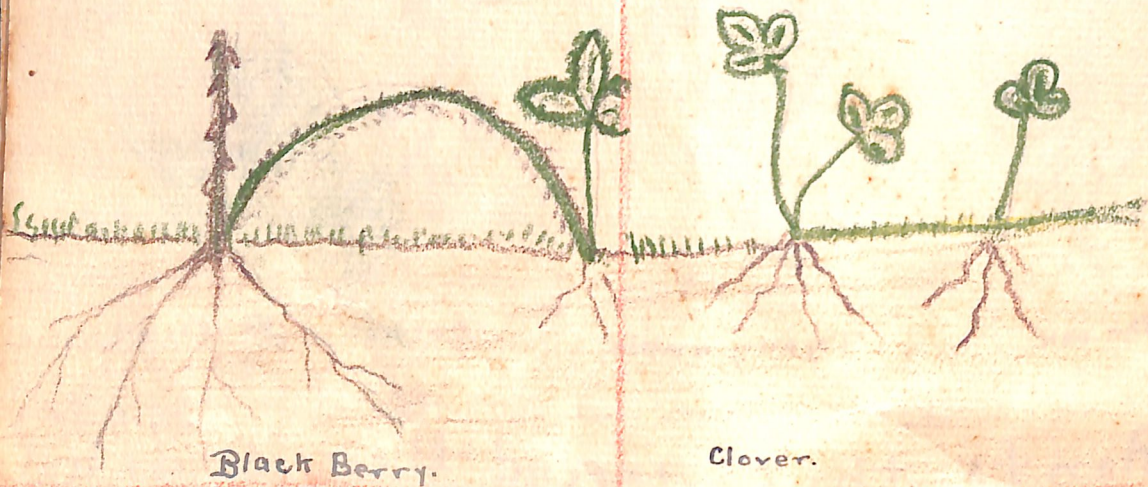


Plumbago.

Plants scattered by men & animals.

How plants spread themselves.

Plants do not always send out seeds, some grow by layering. The blackberry grows a long shoot which after a while becomes too heavy then it falls to the ground. It waits for the rains to come and then the long shoot takes root. Other plants creep along the ground such as buffalo grass and clover.



"Autumn Gardening"

As the weather is still dry we must keep watering but we must keep a sharp look out for slugs. 2.6.5 is a good slug exterminator. You sprinkle the 2.6.5 around the plants and the slugs eat it and die.

What To Do With Flowering Shrubs After They Have Flowered.

When shrubs have finished flowering you should always cut them off to the ground; but it is ~~only necessary~~ with others to nip off the dead flowers. Some plants such as arbutus send up nice tender next year's flowers while they are blooming this year. We must have these tender green shoots and break off

How To MAKE A Long Garden



Copros mas
Lantanas

Plumbago and flowering Currants.
Pentstemonys and patchoa
Pasturtiums. and. violas.



Lan tana.



Lan tana.



While Flowering
This isn't a

After flowering.
Pig face.

Autumn Planting

Now is the time to plant all kinds of shrubs. The days are still warm, because it is May. Deep holes should be dug; plenty of humus should be thrown in if the hole is very big you can put a thick layer of oak leaves because they will rot by the time the roots reach them.

Lantanas are very beautiful shrubs; they are reddy brown, rose pink, ~~very~~ white, yellow and purple. All the Lantanas except the purple one grow into bushes, the purple one creeps about along the ground.

all the rest. Dead flowers are always unsightly and they should be pulled off. Dead roses should be broken off and scattered around the bush.

Autumn Gardening

It is now time to manure the garden well. Now that the autumn rains are commencing we must spread manure all over the plants. We should also store away some, 'the rain' @ a good place to store it is under the shrubs at the back of the garden; there it is out of sight and doing the shrubs and rotting all the time for the plants that come in the spring-time. Such as phlox candy-tuft, larkspurs and violas. Some gardeners dig a pit for the manure but this is not a good plan because, it is ugly, unhealthy and the ^{liquid} liquid manure would be wasted.

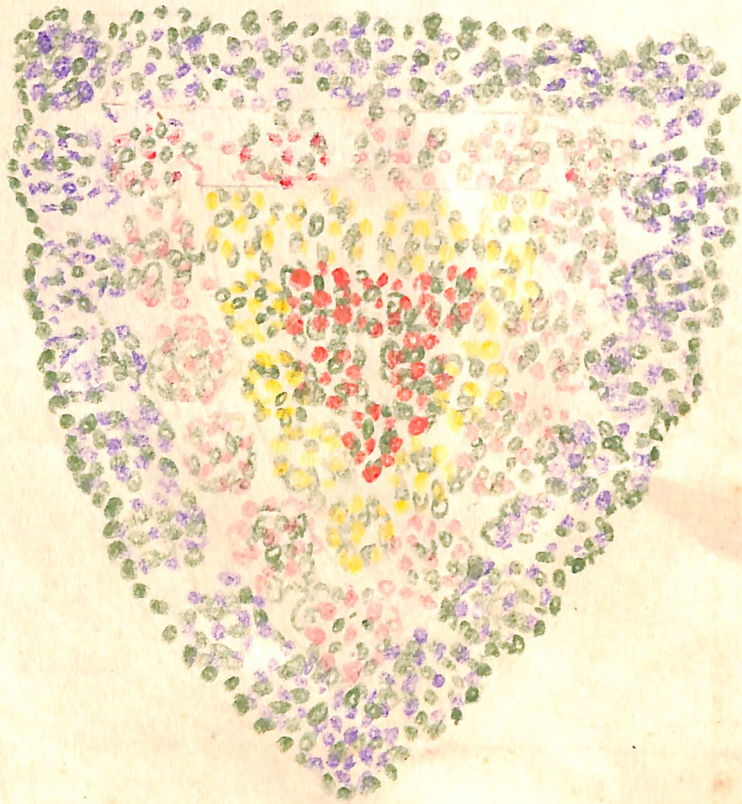


Dahlia Bulbs



Carrot.

How to Plant a Bed with Shrubs



A good way to plant this bed, is as follows. One big "Goliath" lantana in center. Round "Goliath" dianthus (pink). Round dianthus "Chelsea Gems". Round the outside "Chelsea Gems" plant *Silvianas* (mauve).

Autumn Gardening.

It is the time now to break off all the tops of the easter daisies. This is more easy to break them off after a frost because they become brittle. All shrubs should be in the garden because the soil is so cold for them to take root. Most plants ~~that~~ that were blooming in the autumn should be broken off except the penstemons because they have not yet finish blooming.

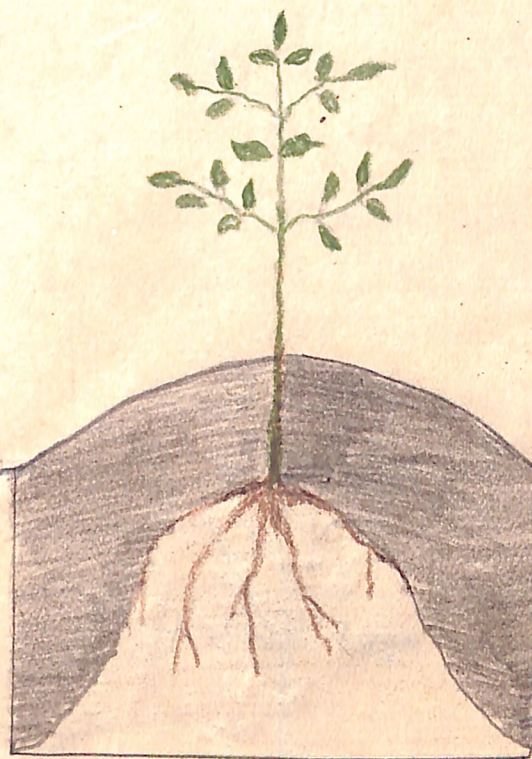
through the summer. For-get-me-nots are going to seed. Climbing roses are beginning to bloom and if they get the blight we must spray them with nicotine and water. them well.

Planting a Tree.

Trees are planted now, at Bayswater. First you dig a round hole two feet six inches in diameter. Then you fill the hole with good soil, just a little bit higher than the hole. Place the (root) tree on top and then put all the roots around. When you have finished this, place (back) the soil on the roots.

Spring Gardening

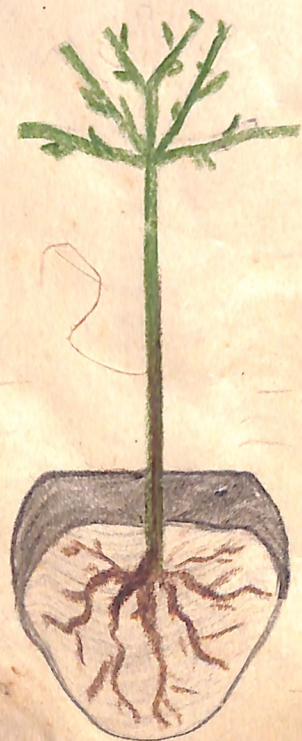
Dahlias are sprouting in our cupboards and so it is time they were in the ground. Cosmos are coming up and can be planted out where they will bloom in the autumn. Later on they will need to be watered all



A well planted tree.



Plan of an Easter Daisy clump three years old.



A. Rose well planted

What to Do in late July.

Now is the time when the sap begins to flow, and if we plant rose cuttings they will begin to send out white roots in a week or so.

After roses have been in the ground for two or three weeks, on no account must they be bumped. A little fence consisting of sticks should be put around the cutting for fear of any animal bumping them.

It is the time now to go around to all the herbaceous plants such as Easter Daisies and Chrysanthemums should no be lifted. They should be divided and all the plants around the edge should be planted again.

How to plant a standard Rose

You dig a round hole about seven inches deep so the bottom will not be very far from the clay. Put the rose in the hole with the roots all sticking around like the spokes of a wheel; also you must be careful not to let them turn up. It would be better to cut them off. Next cover the roots up with soil and punch it down leaving it a little higher than the surrounding garden. Roots love the soil to press closely all around them.

Wilson



10/29-204816

bs, b1