

This is the Sheet marked *A* referred to in *Brown Grant* Certificate of Title entered in the Register Book Vol. *965* Fol. *192923*



ORIGINAL

J. Morrell
Assistant Registrar of Titles.

TRANSFER AS TO PART to
Anthony Loughnan registered
on *17th April 1928* numbered *1361889*
CANCELLED AS TO PART See Certificate of Title
Vol. *5395* Fol. *1078921*
J. Morrell
Assistant Registrar of Titles

TRANSFER AS TO PART to
Adelaide Pearson registered
on *10th September 1930* numbered *1465737*
CANCELLED AS TO PART See Certificate of Title
Vol. *5687* Fol. *1137322*
J. Morrell
Assistant Registrar of Titles

TRANSFER AS TO PART to
John Peter McDonald registered
on *28th June 1928* numbered *137726*
CANCELLED AS TO PART See Certificate of Title
Vol. *5425* Fol. *1084869*
J. Morrell
Assistant Registrar of Titles

TRANSFER AS TO PART to
Peter Cunningham Hollo registered
on *10th September 1930* numbered *1465737*
CANCELLED AS TO PART See Certificate of Title
Vol. *5687* Fol. *1137323*
J. Morrell
Assistant Registrar of Titles

TRANSFER AS TO PART to
Joseph John Henry White registered
on *9th September 1929* numbered *142911*
CANCELLED AS TO PART See Certificate of Title
Vol. *5581* Fol. *1116177*
J. Gleeson
Assistant Registrar of Titles

TRANSFER AS TO PART to
Violet Grace Kime registered
on *15th October 1930* numbered *146865*
CANCELLED AS TO PART See Certificate of Title
Vol. *5700* Fol. *1139850*
L. Kennedy
Assistant Registrar of Titles

TRANSFER AS TO PART to
Francis William Alford registered
on *7th November 1929* numbered *142819*
CANCELLED AS TO PART See Certificate of Title
Vol. *5600* Fol. *1119940*
A. Hoagoo
Assistant Registrar of Titles

TRANSFER AS TO PART to
Henry Thomas Pamphill registered
on *4th February 1931* numbered *147238*
CANCELLED AS TO PART See Certificate of Title
Vol. *5715* Fol. *1142895*
L. Kennedy
Assistant Registrar of Titles

TRANSFER AS TO PART to
John Peter McDonald registered
on *12th February 1930* numbered *1446666*
CANCELLED AS TO PART See Certificate of Title
Vol. *5631* Fol. *1126076*
M. Lucey
Assistant Registrar of Titles

TRANSFER AS TO PART to
James Edward Manton and Johanna Genevieve Manton registered
on *21st April 1931* numbered *1479055*
CANCELLED AS TO PART See Certificate of Title
Vol. *5727* Fol. *1145274*
J. Morrell
Assistant Registrar of Titles

TRANSFER AS TO PART to
John Thomas Kane registered
on *5th March 1930* numbered *1449360*
CANCELLED AS TO PART See Certificate of Title
Vol. *5640* Fol. *1127982*
A. Hoagoo
Assistant Registrar of Titles

TRANSFER AS TO PART to
James Albert Brown registered
on *19th June 1931* numbered *1483380*
CANCELLED AS TO PART See Certificate of Title
Vol. *5740* Fol. *1147803*
J. Morrell
Assistant Registrar of Titles

Delivered on-line by LANDATA®
This document provides an image of a cancelled folio of the Register. It is not a statement from the register of subsisting information in relation to the land to which it refers.

WARNING

Delivered by LANDATA®. Land Victoria timestamp 11/06/2014 12:08 Page 4 of 14

TRANSFER AS TO PART to
Andrew Kennans McCracken registered
 on 14th July 1931 numbered 1484998
 CANCELLED AS TO PART See Certificate of Title
 Vol 5742 Fol 1148316
J.M. Rae
 Assistant Registrar of Titles

TRANSFER AS TO PART to
Edward Heffernan registered
 on 2nd October 1931 numbered 1484998
 CANCELLED AS TO PART See Certificate of Title
 Vol 5757 Fol 1151246
J.M. Rae
 Assistant Registrar of Titles

TRANSFER AS TO PART to
John Tale registered
 on 18th November 1931 numbered 1491992
 CANCELLED AS TO PART See Certificate of Title
 Vol 5763 Fol 1152553
L. Kennedy
 Assistant Registrar of Titles

TRANSFER AS TO PART to
William John Cowan registered
 on 1st January 1932, numbered 1494462.
 CANCELLED AS TO PART See Certificate of Title
 Vol 5771 Fol 1154092
L. Kennedy
 Assistant Registrar of Titles

TRANSFER AS TO PART to
Charlotte Emily Beattie registered
 on 8th July 1932 numbered 1504733
 CANCELLED AS TO PART See Certificate of Title
 Vol 5796 Fol 1159190
L. Kennedy
 Assistant Registrar of Titles

TRANSFER AS TO PART to
To Shee Chong King registered
 on 25th November 1932 numbered 1513515
 CANCELLED AS TO PART See Certificate of Title
 Vol 5820 Fol 1163994
L. Kennedy
 Assistant Registrar of Titles

CAVEAT No 89659 LODGED 5th July 1931
 affecting part of the land herein
 Vol 574 Fol 115424

TRANSFER AS TO PART to
Cornelius Joseph Gardner registered
 on 14th August 1933, numbered 1529676
 CANCELLED AS TO PART See Certificate of Title
 Vol 5862 Fol 1172353
L. Kennedy
 Assistant Registrar of Titles

TRANSFER AS TO PART to
Edith Gardner registered
 on 14th August 1933, numbered 1529677
 CANCELLED AS TO PART See Certificate of Title
 Vol 5862 Fol 1172354
L. Kennedy
 Assistant Registrar of Titles

TRANSFER AS TO PART to
Raphael Percival Watson Ambler registered
 on 11th September 1933, numbered 15318
 CANCELLED AS TO PART See Certificate of Title
 Vol 5862 Fol 1172355
L. Kennedy
 Assistant Registrar of Titles

TRANSFER AS TO PART to
Peter James Ruth registered
 on 23rd May 1934 numbered 1548149
 CANCELLED AS TO PART See Certificate of Title
 Vol 5898 Fol 1179570
J.M. Rae
 Assistant Registrar of Titles

TRANSFER AS TO PART to
Alice Mary Plumber registered
 on 24th October 1935, numbered 1593868
 CANCELLED AS TO PART See Certificate of Title
 Vol 6001 Fol 1200128
L. Kennedy
 Assistant Registrar of Titles

For Continuation of Endorsement
 see annex marked B

Delivered on-line by LANDATA®
 This document provides an image of a cancelled folio of the Register. It is not a statement from the register of subsisting information in relation to the land to which it refers.
 WARNING

Delivered by LANDATA® Land Victoria timestamp 11/06/2014 12:08 Page 5 of 14



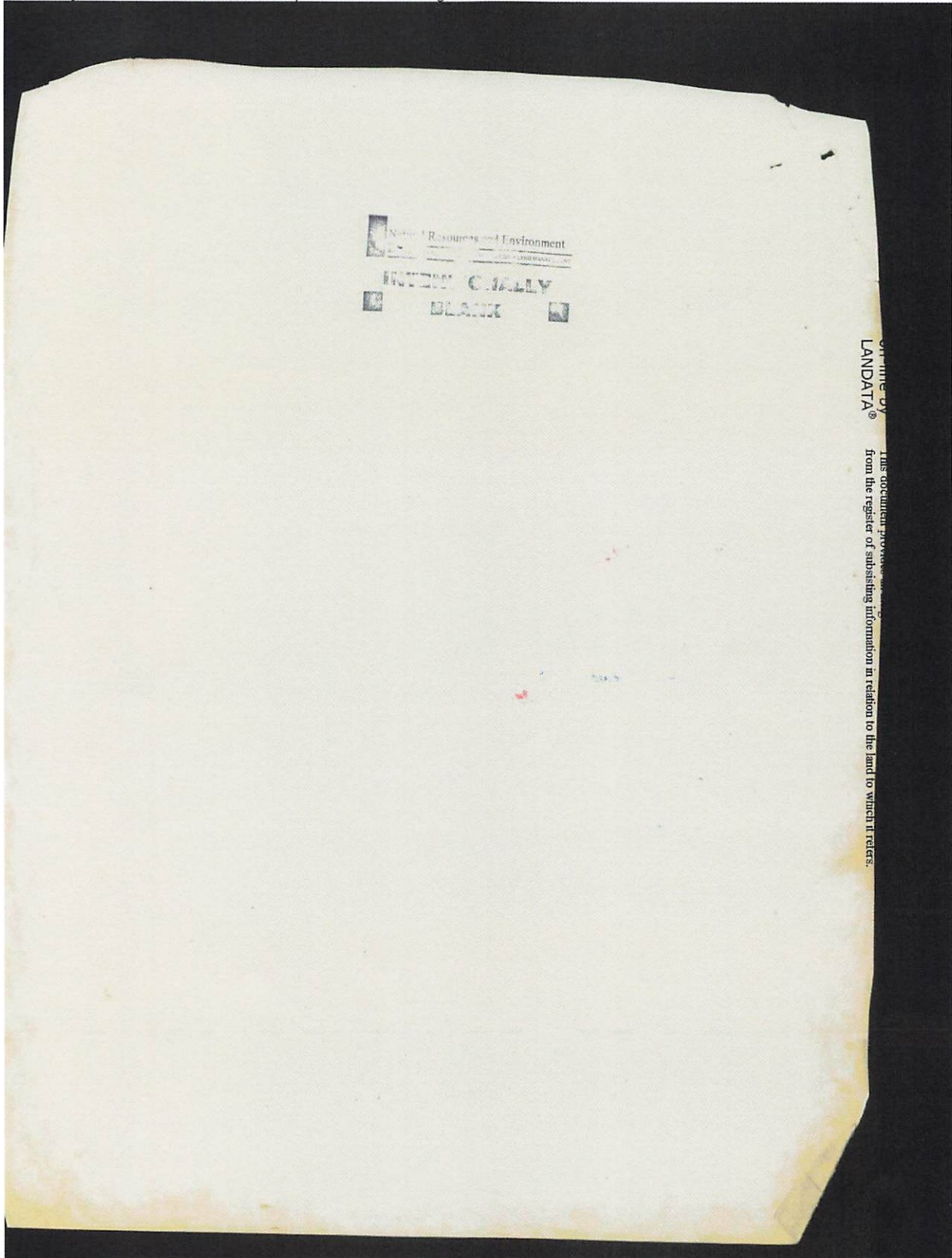
Delivered on-line by LANDATA®

This document provides an image of a canceled folio of the Register. It is not a statement ES from the register of subsisting information in relation to the land to which it refers.

WARNING NOT TO BE TAKEN FROM THE OFFICE ORIGINAL

LPI1392 Sheet 2

Delivered by LANDATA®. Land Victoria timestamp 11/06/2014 12:08 Page 6 of 14



Delivered by LANDATA®. Land Victoria timestamp 11/06/2014 12:08 Page 7 of 14

This is the Sheet marked *B* referred to in Certificate of Title entered in the Register Book Vol. *65* Fol. *1789-3*

ORIGINAL

J. S. Clewley
Assistant Registrar of Titles.

TRANSFER AS TO PART to
James Hankey
registered
on *17th February 1917* numbered *121920*

CANCELLED AS TO PART See Certificate of Title
Vol. **6097** Fol. **1219203**

J. S. Clewley
Assistant Registrar of Titles.

TRANSFER AS TO PART to
Walter Nichol
registered
on *9th June 1937* numbered *165435*

CANCELLED AS TO PART See Certificate of Title
Vol. **6123** Fol. **1224158**

J. S. Clewley
Assistant Registrar of Titles.

TRANSFER AS TO BALANCE to
Land Investment Company Limited
registered
on *18th August 1927* numbered *1659185*

CANCELLED See Certificate of Title
Vol. **6144** Fol. **1228752-3-4 and 5**

J. S. Clewley
Assistant Registrar of Titles

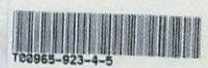
CANCELLED
DUP. WITH
Oct 1937

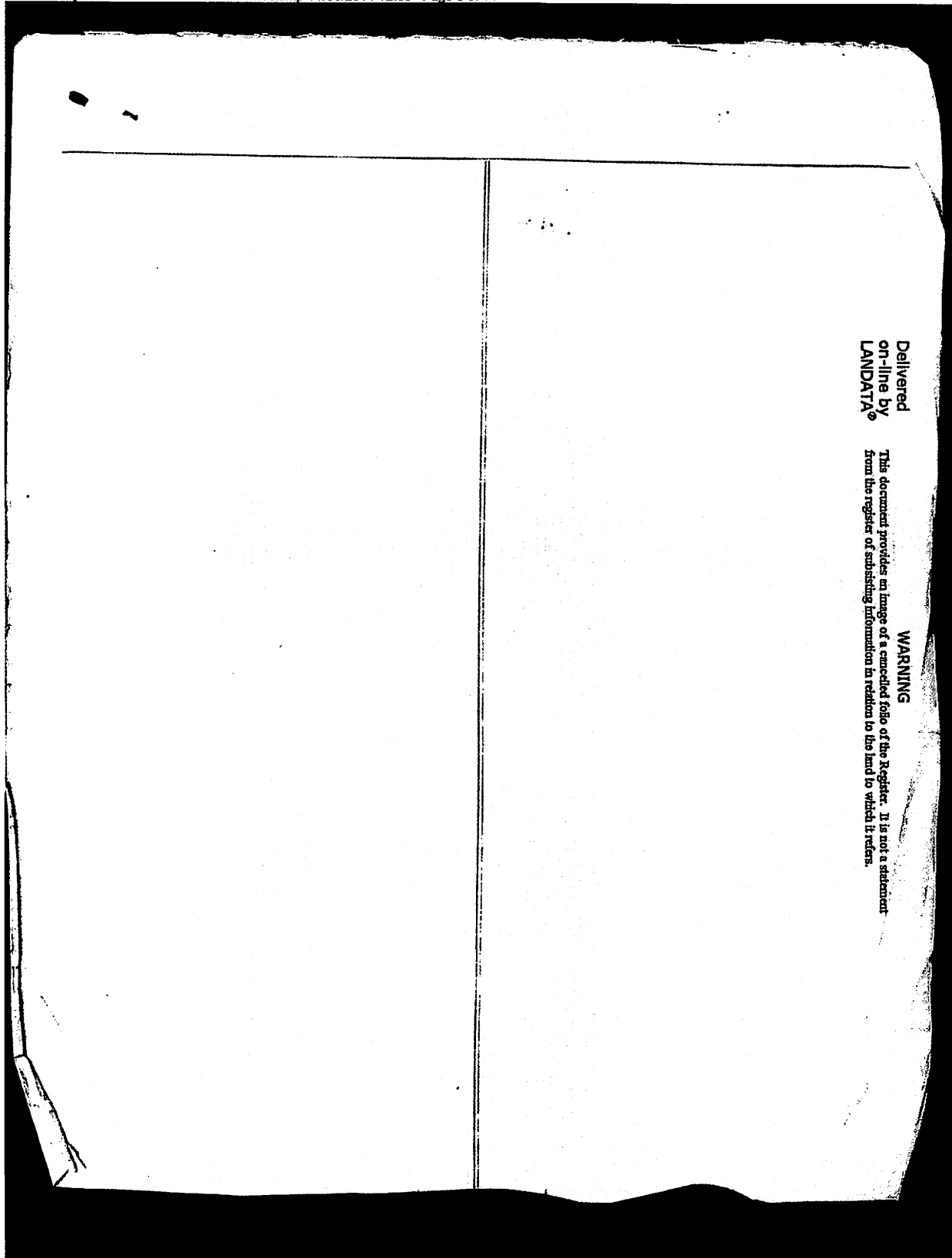
ORIGINAL
NOT TO BE TAKEN FROM THE OFFICE
OF TITLES

Delivered
on-line by
LANDATA®

This document provides an image of a cancelled folio of the Register. It is not a statement from the register of subsisting information in relation to the land to which it refers.

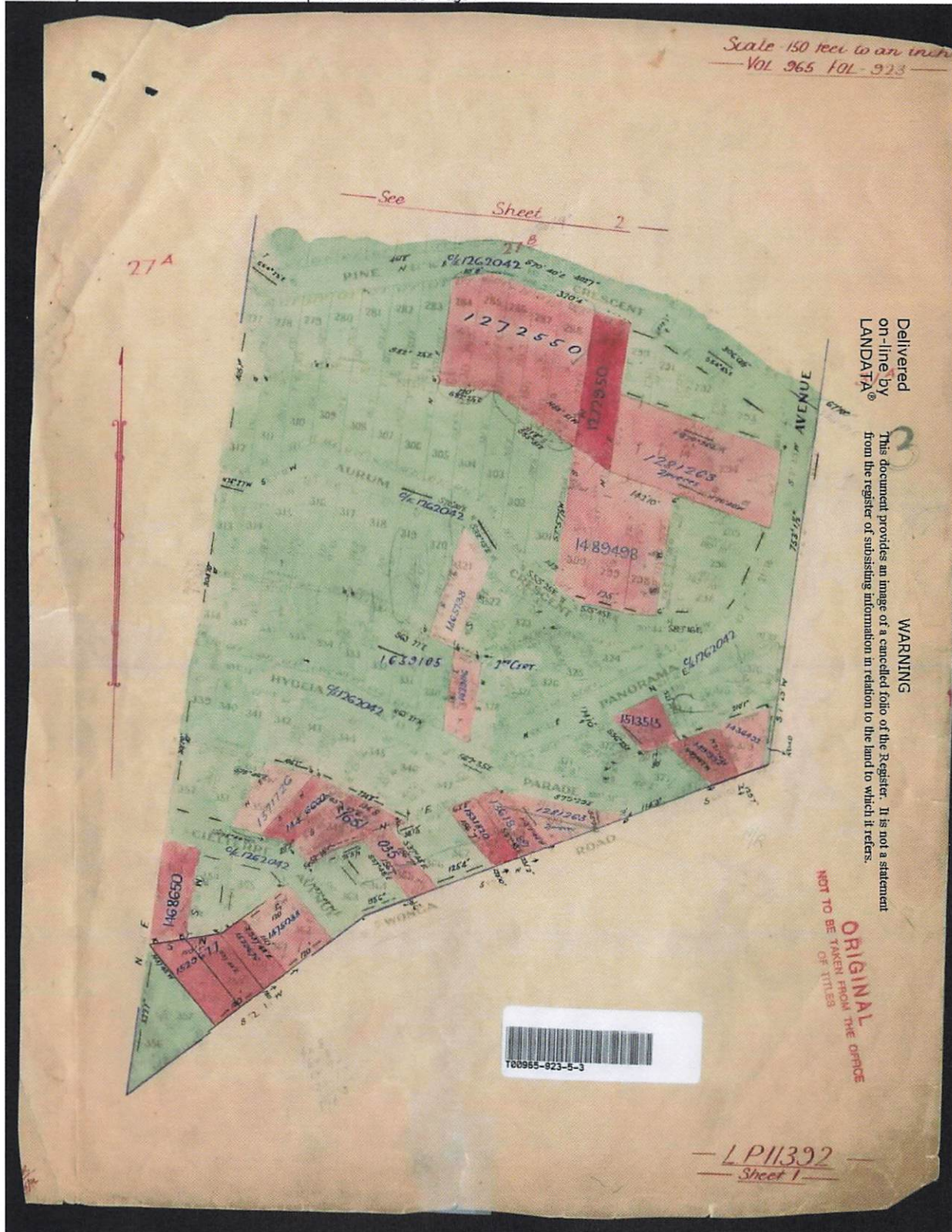
WARNING



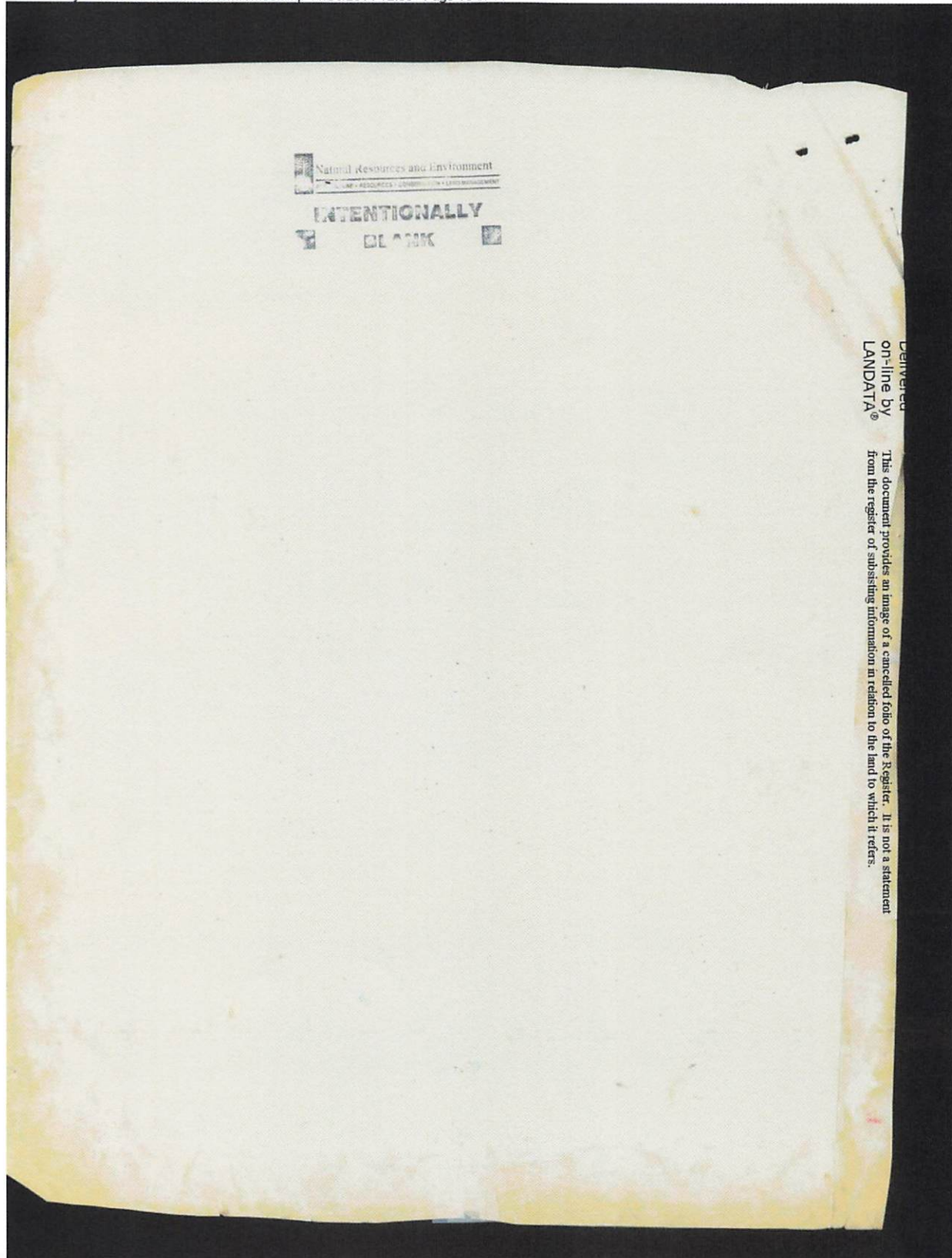


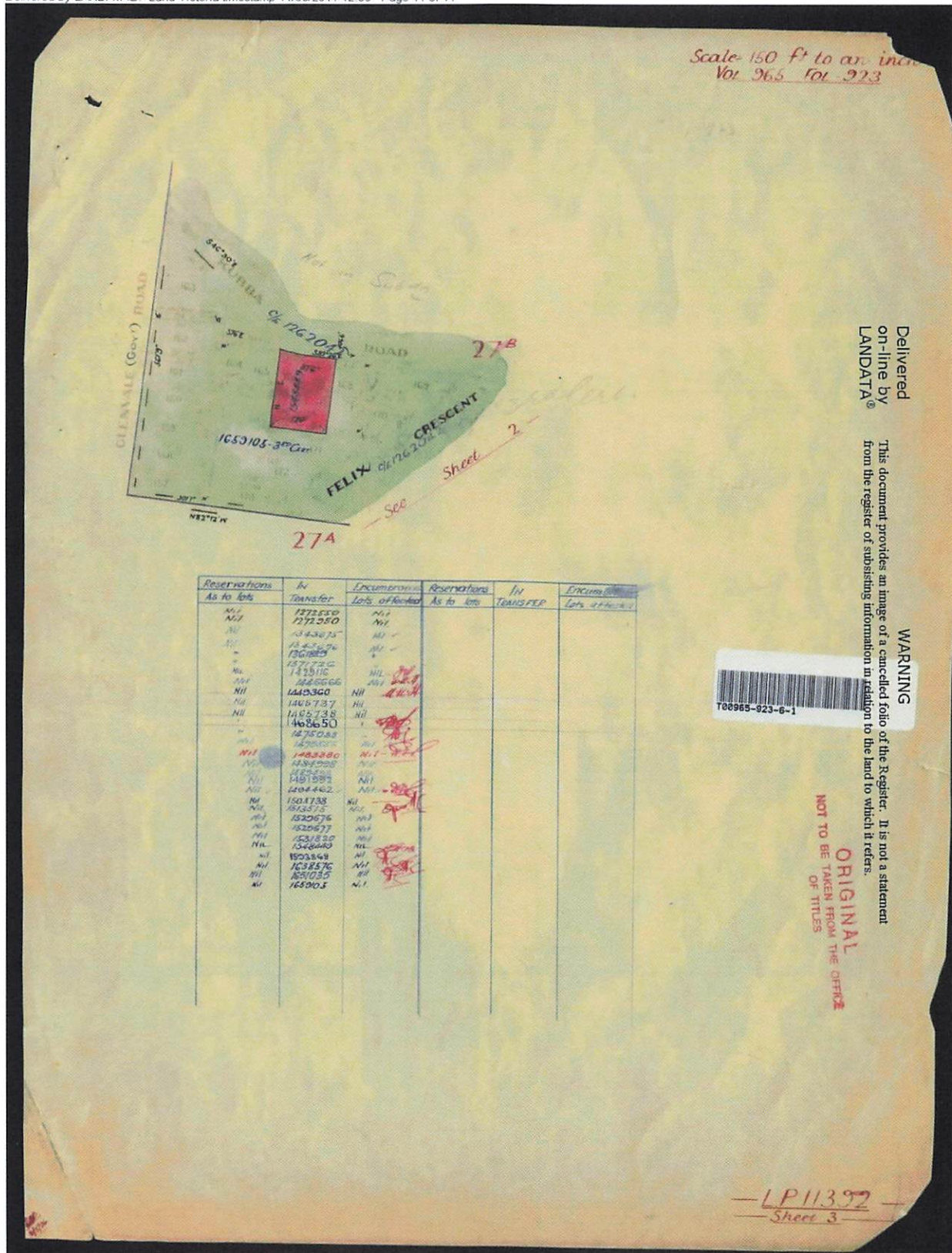
Delivered
on-line by
LANDATA®

WARNING
This document provides an image of a cancelled folio of the Register. It is not a statement
from the register of subsisting information in relation to the land to which it refers.



Delivered by LANDATA®. Land Victoria timestamp 11/06/2014 12:08 Page 10 of 14

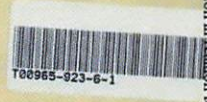




Delivered on-line by LANDATA®

This document provides an image of a cancelled folio of the Register. It is not a statement from the register of subsisting information in relation to the land to which it refers.

WARNING

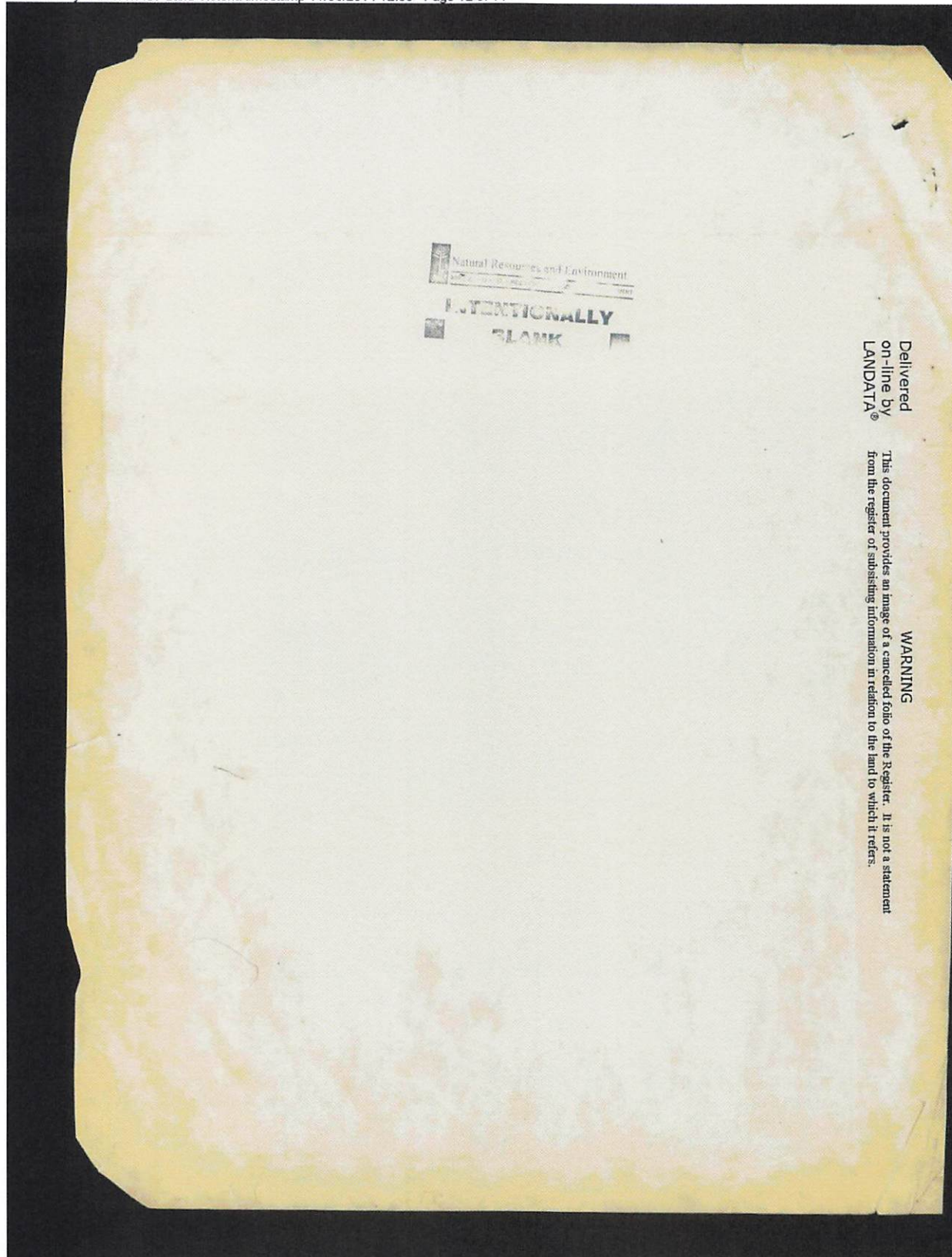


ORIGINAL NOT TO BE TAKEN FROM THE OFFICE OF TITLES

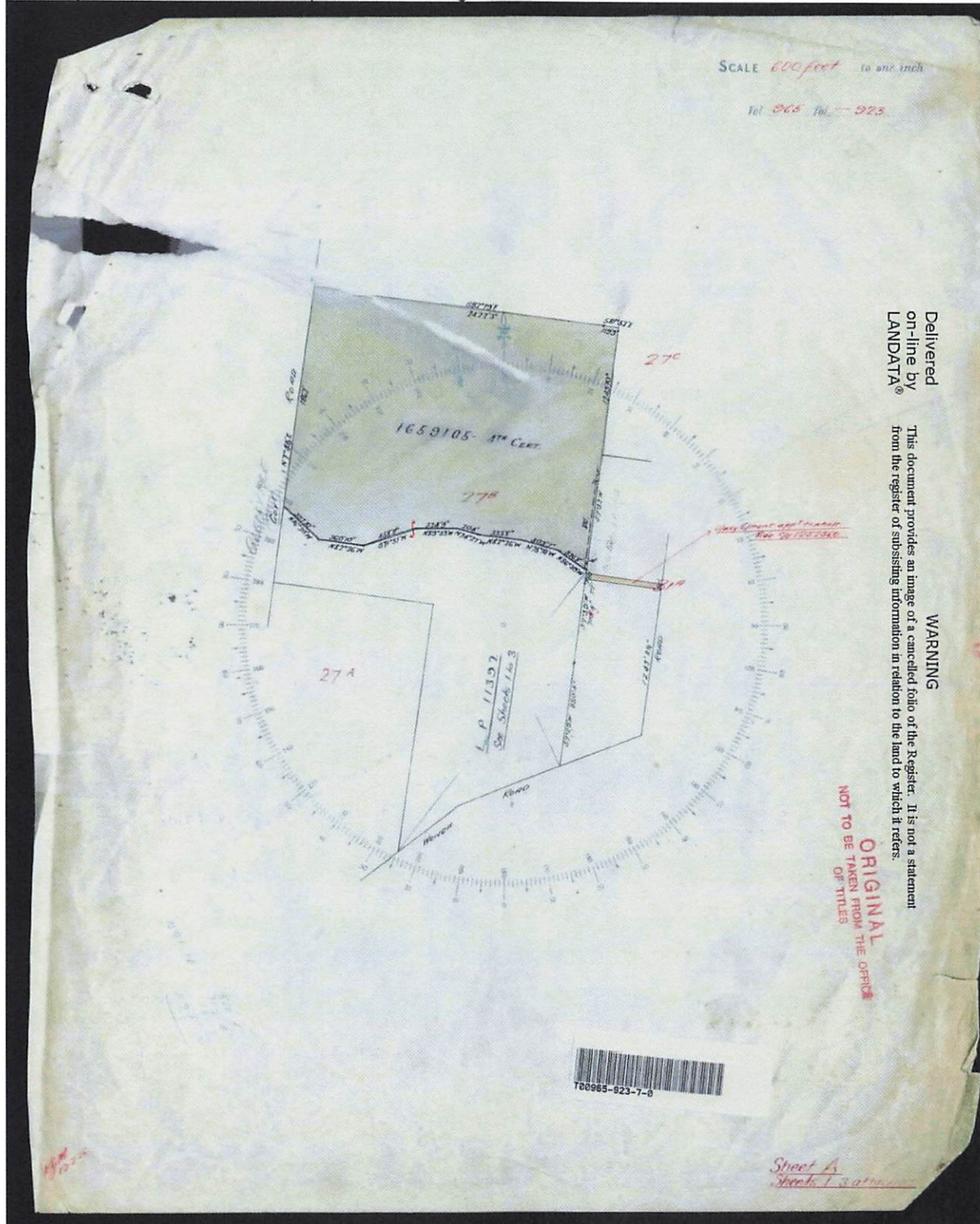
LP11392 Sheet 3

Reservations As to lots	IN Transfer	Excursions Lots affected	Reservations As to lots	IN TRANSFER	Excursions Lots affected
Nil	1772550	Nil			
Nil	1772580	Nil			
Nil	1343073	Nil			
Nil	15425676	Nil			
Nil	1507889	Nil			
Nil	1577720	Nil			
Nil	1425110	Nil			
Nil	1845566	Nil			
Nil	1440340	Nil			
Nil	1465737	Nil			
Nil	1465738	Nil			
Nil	1468650	Nil			
Nil	1475088	Nil			
Nil	1475089	Nil			
Nil	1483280	Nil			
Nil	1484020	Nil			
Nil	1485280	Nil			
Nil	1481987	Nil			
Nil	1404442	Nil			
Nil	1501738	Nil			
Nil	1513575	Nil			
Nil	1520576	Nil			
Nil	1520577	Nil			
Nil	1531820	Nil			
Nil	1540080	Nil			
Nil	1503848	Nil			
Nil	1638576	Nil			
Nil	1550335	Nil			
Nil	1650015	Nil			

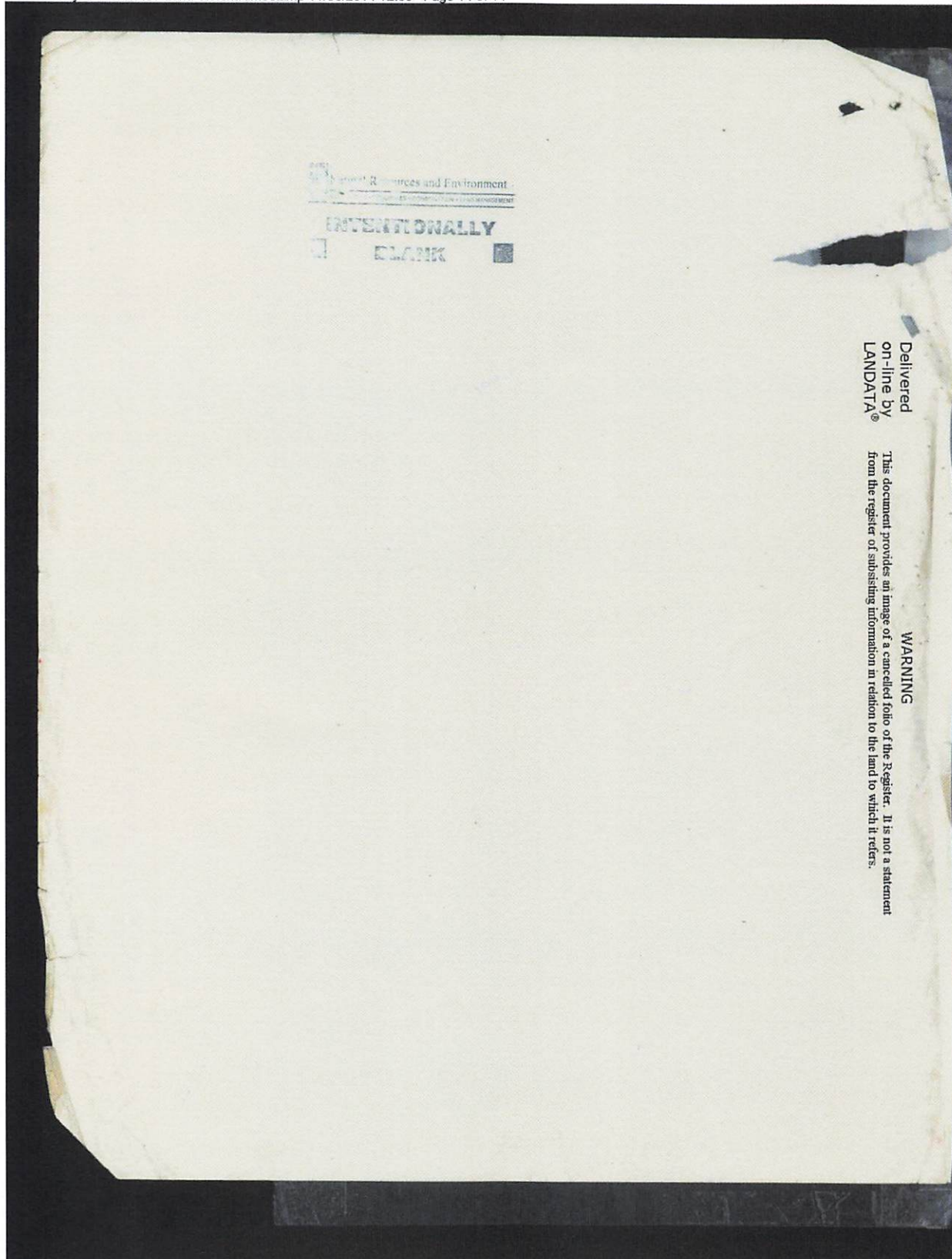
Delivered by LANDATA®. Land Victoria timestamp 11/06/2014 12:08 Page 12 of 14



Delivered by LANDATA®. Land Victoria timestamp 11/06/2014 12:08 Page 13 of 14



Delivered by LANDATA®. Land Victoria timestamp 11/06/2014 12:08 Page 14 of 14



Delivered from the LANDATA® System by GLOBALX INFORMATION PTY LTD