

EastLink RINGWOOD construction update

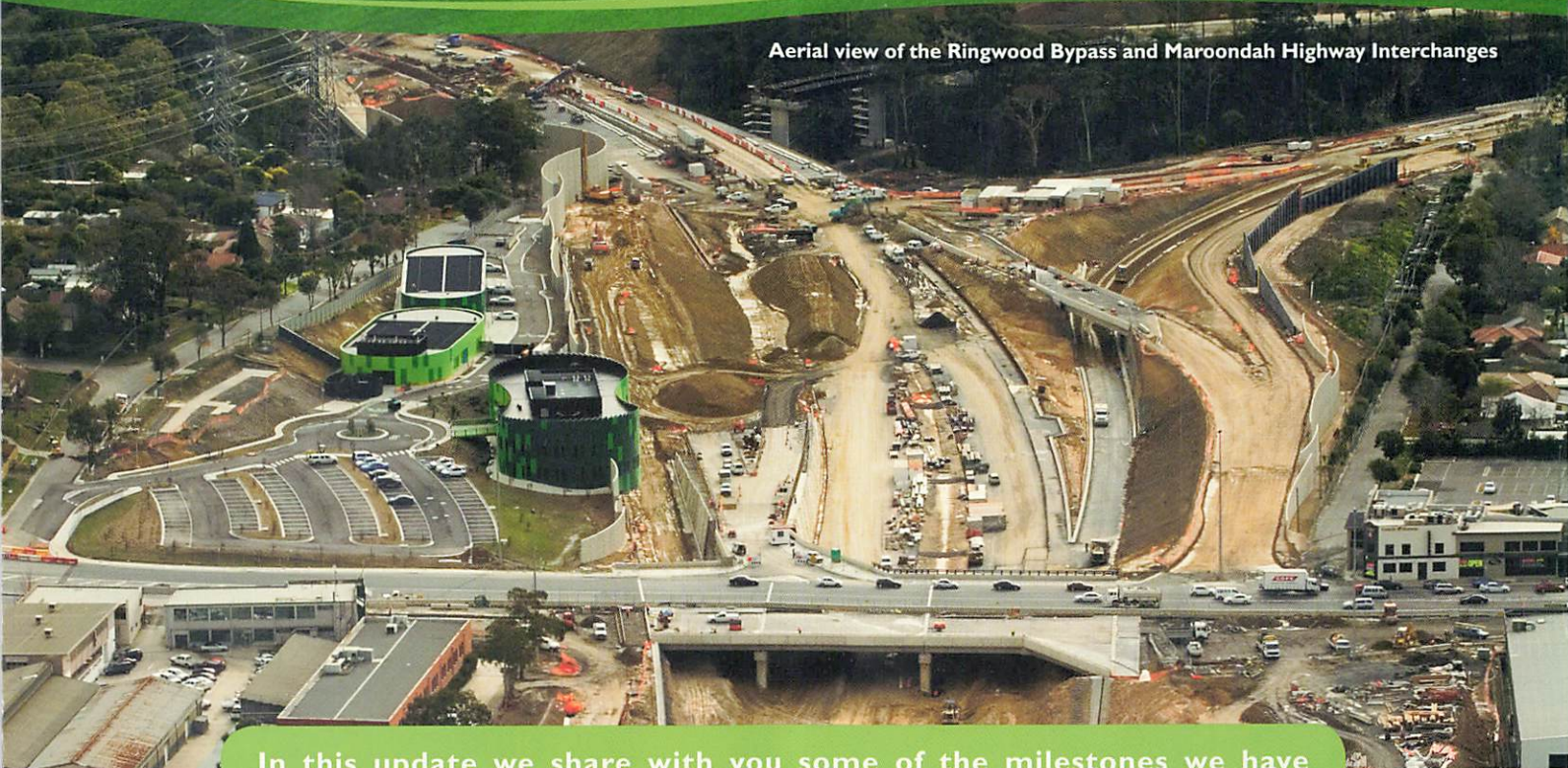
August 2007



John
Holland

Connecting People

Aerial view of the Ringwood Bypass and Maroondah Highway Interchanges



In this update we share with you some of the milestones we have reached over the last three months as we head towards construction completion in 2008.

The first half of 2007 has been a busy period for the Ringwood Region, with many bridges being completed, and others being partially opened (with two way traffic flowing). Electrical service installation including tolling equipment, street lights and traffic lights is underway, and in some locations it has been completed and is under testing. Landscaping has also commenced in many areas.

Progress includes:

- Completion of three out of six bridges forming the Ringwood Bypass Interchange.
- Completion of Molan Street bridge, Dandenong Creek bridges and Boronia Road bridge.
- Completion of pedestrian bridges over the Mullum Mullum Creek, Heatherdale Creek and Dandenong Creek.
- Placement of the first layer of asphalt along the Ringwood Bypass and between the Mullum Mullum Creek and Maroondah Highway bridge. Asphalt has also been placed between Molan Street and Canterbury Road, Canterbury Road and Boronia Road and Boronia Road and Mountain Highway.
- Upgrade of the existing shared use path in Koomba Park between Boronia Road and Mountain Highway.
- Completion of landscaping of wetlands on the south side of Mullum Mullum Creek, Canterbury Road, Dandenong Creek and Boronia Road.
- Installation of street lighting between Molan Street and Mountain Highway.
- Installation of tolling gantries and equipment between Molan Street and Mountain Highway.
- Installation of traffic signals at various on and off-ramps to and from EastLink.
- Installation of post and panel noise walls along Poynton Avenue and Munro Street.
- Completion of landscaping of the Eastlink Operations Centre (ELOC) carpark.

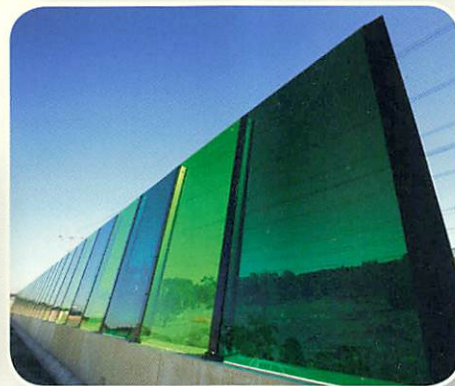
Construction moves on...



Nearly 21,000 members of the public were among the first to get a unique glimpse of the EastLink motorway on 6 May 2007. Visitors were able to view first-hand the major works in progress in the Ringwood region and ask questions about using EastLink as well as enjoy some light entertainment and a magnificent sausage sizzle put on by local Rotary Clubs.



The EastLink Operations Centre (ELOC) nears completion as final fit out works inside the buildings take place.



Green coloured acrylic panels are a key architectural feature of the bridges over the Dandenong Creek.

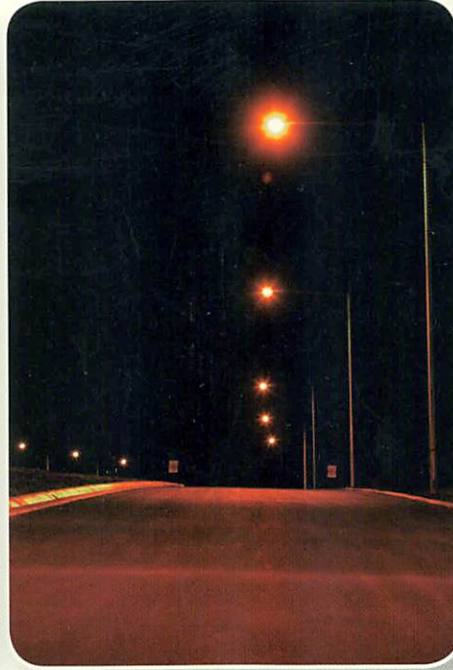


Coastal Park

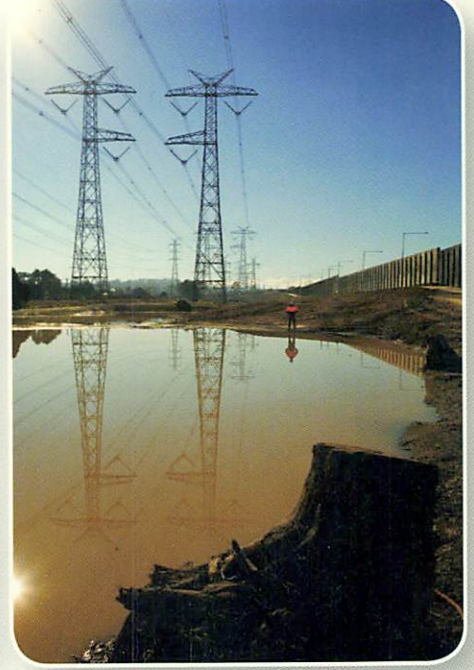
Aerial view of the new Molan Street, Belgrave-Lilydale Rail Line and Maroondah Highway.



Street lighting has been installed along the motorway between Dandenong Creek and Mountain Highway.



The wetlands on the south side of Canterbury Road will treat water run-off from EastLink as well as provide a unique habitat for local birdlife.



The Ringwood Bypass Interchange is one of the largest and most impressive aspects of EastLink, with an estimated 170,000 vehicles to pass through it each weekday once completed. This bridge will carry northbound traffic to the Ringwood Bypass.



EastLink – More than just pavement

As construction of EastLink moves closer to operations in 2008, Thiess John Holland's landscaping team is moving in to make the roadside green. Rather than being greeted by road pavement, noise walls and barren dirt, motorists will be treated to a series of broad landscape characters.

The landscape design for EastLink is divided into different landscape precincts. For example, to highlight the textured concrete noise walls, broad massed plantings of native grasses and ground covers will be used along the carriageways. The new plants will include over three million indigenous shrubs and grasses and five hundred thousand trees sourced locally.

The trees, shrubs and grasses to be planted are low maintenance, drought resistant and aesthetically pleasing. All new vegetation will be planted to enhance the roadside character and at the same time,

pose no safety hazard. The landscaping will improve visual quality, including positive driver guidance and navigation, provide distraction screening, corridor continuity and scenic view preservation.

In addition to the plantings along EastLink, a number of linear wetlands have been created. The wetlands will be planted with indigenous riparian species and will treat storm water run-off. In the areas where creeks and streams have been realigned, a naturalistic rock channel of varying widths, to create pools and riffles for aquatic habitat will be installed.

The entire landscape and wetland component of EastLink amounts to an area greater than the 480 hectares of parks and gardens in the City of Melbourne. As the landscaping matures, motorists traveling on EastLink will be provided with a unique visual and environmental experience.



Thiess John Holland says farewell to Snow White

A star attraction on the EastLink construction site has been the 500-tonne mobile crane, affectionately nicknamed Snow White. Snow White was purchased to help construct the many bridges across the project. It is the biggest mobile crane in Victoria and she has had her work cut out, erecting 1639 bridge beams. Snow White successfully completed her task placing her last beam on EastLink on the morning of Tuesday, 17 July. We bid her a fond farewell.



Further Information

For more information about these works or if you have any queries please contact us on the EastLink community contact line on 1800 173 176 or visit www.thiessjohnholland.com.au