

PROBE



VOL. 7. NO. 10.
cover: W. Prohasky.

SUNSTROKE SEASON

Some of our Australian animals can die of sunstroke if they are out in the sun too long. They need shade just like you and I, from the hot sun.

Echidnas need to dig a hole or find shade.



Snakes need rocks or logs to shade them.

"Not that big!"



So do lizards.



All these animals cannot live under the hot sun. They do not pant like dogs or birds do when they are hot, to rid their bodies of the extra heat inside of them.



"I don't feel very well..."



"Get out of the sun you sausage!"



You can help these animals by putting back rocks or stones after you have picked them up to look at the animals.

Many other animals get sick if they are left in the sun too long. Make sure your animals have lots of shade and water so they don't get sick in summer.

BEACH BUSINESS



Things to look for at the beach -
worms with breathing holes in
the sand,
sandhoppers,
crabs,
sea weeds,
all near the water's edge.
limpets,
barnacles,
algae,
tiny fish,
shell fish,
all near rocks.



Brown kelp can help you tell
the weather!
Hang a piece up on a wall -
(outside). When the air is dry,
the kelp is dry and dull.
When the air has water in it,
the kelp will be glossy and
limp.

Do you know why green sea weed
can live in the air?

See what you can find out about your local beach
or stream. Remember; watch, look and learn.



Using a kitchen sieve, take
a shovel full of sand from
near the water's edge and
place it in the sieve.
Pour water into the sieve and
swish it around.
What animals can you find
living in the sand?
What else is there in it?
When you have finished, put
the animals and the sand back
near where you started, or in
the water.



Empty shells were homes for some
sea animal. The shell can be used
again by other animals.
If the opening to the shell is
closed, there is an animal living
in it - leave it alone so you don't
harm it.



Can you find any
signs of pollution
where you are?
Look for;
Oil from ships near
by on the rocks
and sand,
lack of animal life,
birds affected by
water pollution,
litter and garbage.
WE CAN HELP BY PUTTING
OUR GARBAGE IN A BIN,
OR TAKING IT HOME
WITH US!

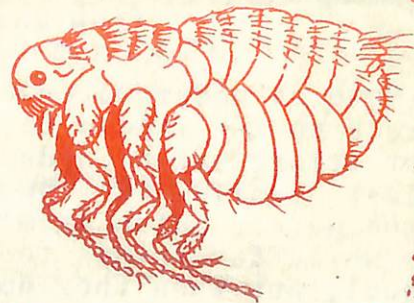
Make an under water viewer for looking into
rock pools. It can be from an orange juice bottle
or strong waxed cardboard. A milk carton will
last a while. Cut the ends off and put it into
the water. Watch from the other end. It may take
a while for things to begin moving again in the
pool, but when they do, it's very interesting.



Any of you that have owned a cat or dog will know a little about fleas already. They are a pest and can bite. Fleas are interesting to look at. They are flat, with hairs growing on their backs. They have six legs, and feed on blood. They have big claws which help them hold on to their 'meal'. They live on dust and dirt when they are very young. When they are older they live on blood from other animals.

- *Look at a flea under a magnifying glass.
- *Where are some places that fleas live?
- *What is the biggest flea we have in Australia?
- *How big is a flea that lives on your dog?
- *Why do fleas like animals better than us?

Side view of a flea.



By M. Camichael, C. Measures

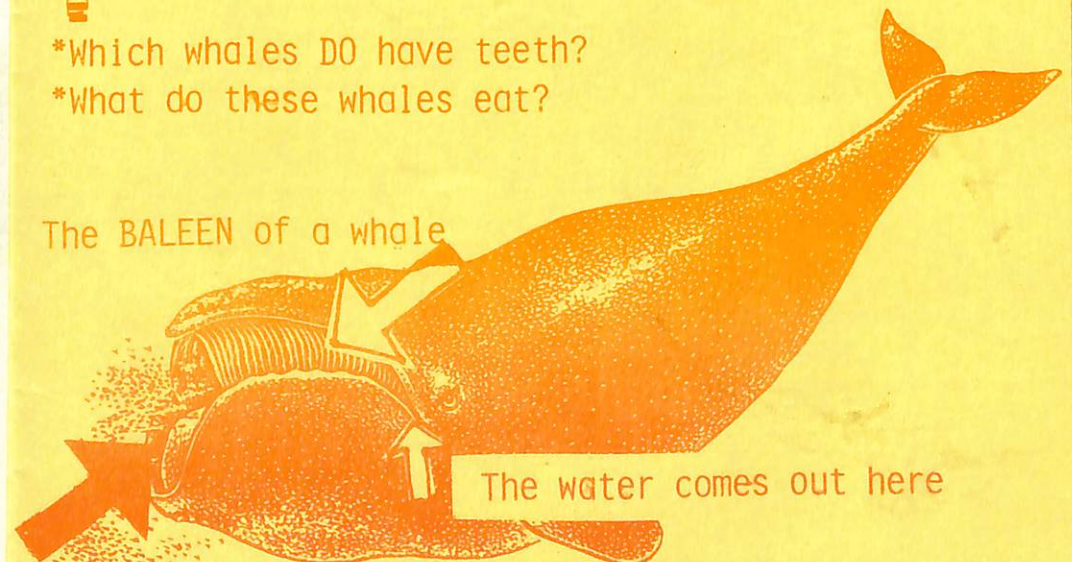
A WHALE'S TALE....

Most whales feed on tiny plants and animals that live in the sea. They swim along slowly with their mouths open, looking for their food. The water, with the food supply in it, rushes into the whale's mouth, and is strained at the side of the whale's mouth on the way out. These "strainers" are called BALEEN.

When they are full of food, the whale licks the baleen clean and swallows the food. The baleen hangs from the top of the whale's mouth, like a soft, feathery curtain. These whales have no teeth, and find all their food in their baleen.

- *Which whales DO have teeth?
- *What do these whales eat?

The BALEEN of a whale



The water comes out here

Where the water and food enter the whale's mouth.

*What are some of the plants and animals that live near your favourite beach?

*Collect some different types of stones from the beach. Sort them into groups.

*Watch a sea gull for five minutes. What are some of the things it does?

*Make a map of your favourite beach. Draw it from memory. Next time you go there, find out what things you missed out.

*Find the answer:
Where do waves come from?

1982 ORDER FORM

SEND TO: P.O. BOX 28, RINGWOOD EAST, VIC. 3135.

PHONE ORDERS: (03) 879 1263

WILBUR WOMBAT'S FORGOTTEN TO ORDER HIS 1982 NATURE NOTES & PROBE -

*WHAT AM I GOING TO DO NOW? (IS LIFE WORTH LIVING WITHOUT NATURE NOTES?)



DON'T BE A WILBUR, BE A WINNER WITH WALLY. ORDER YOUR 1982 NATURE NOTES & PROBE NOW!

"FILL IN THE FORM TODAY... DON'T DELAY!"



Prices for 1982: Nature Notes - 23c } yearly rate
Probe - 12c } \$3.50

This includes postage, of course.

Minimum order price is \$2.50 to cover postage.

I wish to order _____ copies of Nature Notes
_____ copies of Probe.

Name.....

Address.....

.....Postcode.....

You can pay now, or be invoiced early in the new year.
