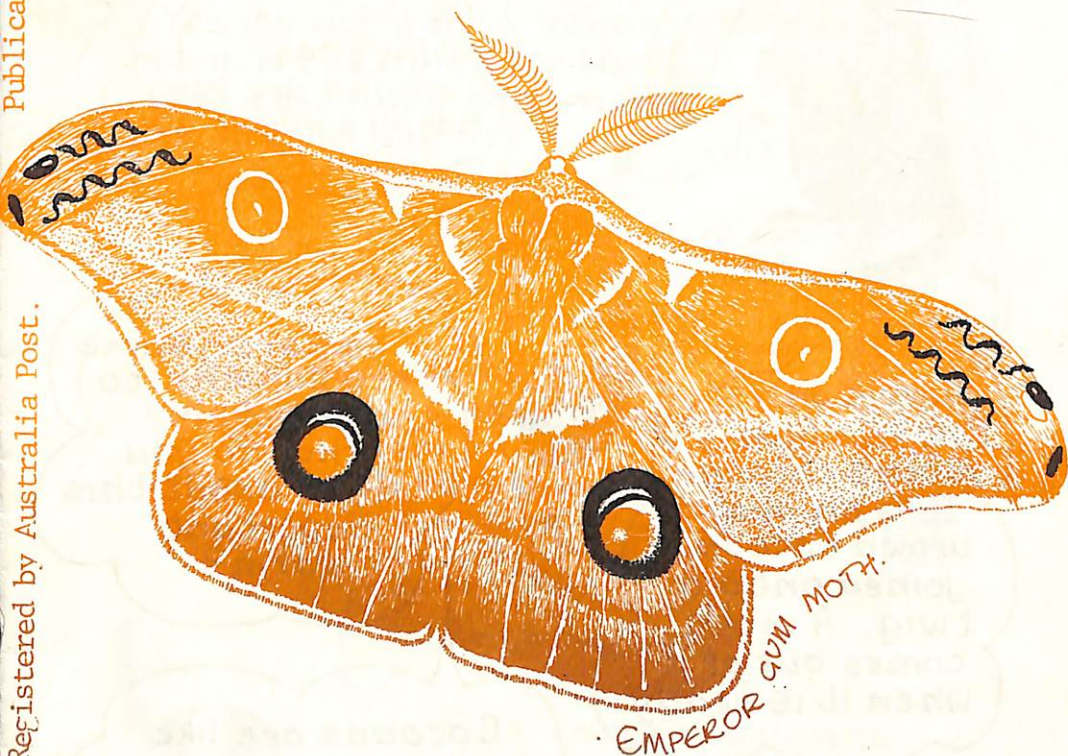


Publication no. VBH 0881.

Registered by Australia Post.

# ..PROBE..



## AUGUST '82

Cover: W. Prohasky.



Our reporter Bruce the Bandicoot is busy trying to interview a cocoon. \*\*\*\*



A reporter's life isn't always easy. Cocoon's are very hard to interview!

Here's an Emperor Gum moth's cocoon. It is an oval brown cocoon, joined onto a twig. A moth comes out of it when it is ready.

Emperor Gums are cousins to silk worms. What do you know about this important worm?

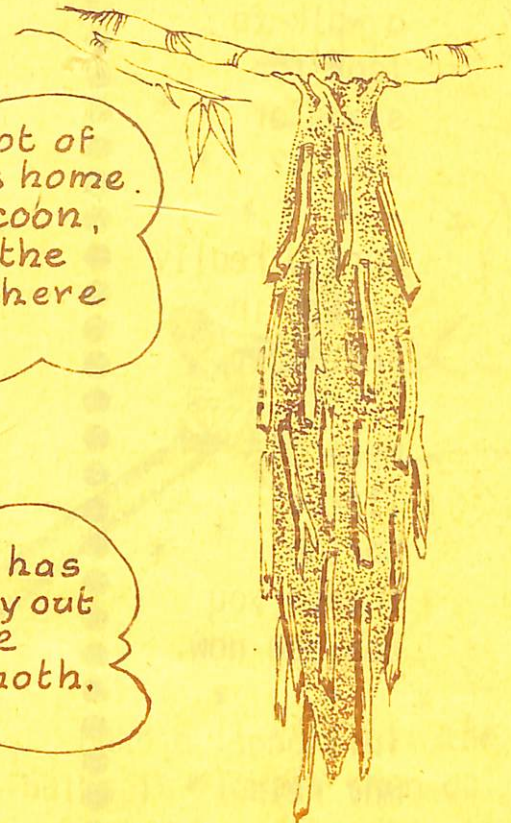
Cocoons are like changing rooms, where insects change into their adult stage.



# cocoons

Here's something a lot of us see, a casemoth's home. Yes, it's not only a cocoon, but it is the home for the lady casemoth and where she lives all her life.

The male casemoth has wings and eats his way out of the bottom of the cocoon when he is a moth.



This cocoon belongs to the Pinara or Drinker moth. It is white and hard. The Drinker moth has a long snout. That's where he gets his name from.





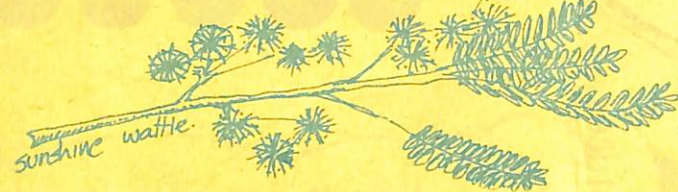
# SIGNS OF SPRING...

Why not take  
a walk to  
look for  
signs of  
Spring?

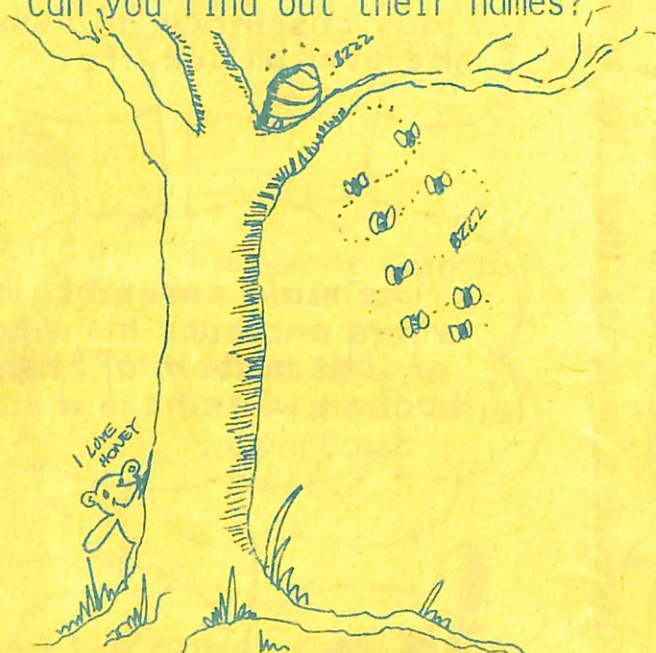
Spring really  
starts in  
September.

Make a  
list of  
Spring  
things you  
can see now.

This page  
may help  
you start  
off.



Count how many different kinds  
of wattle there are in bloom.  
Can you find out their names?



Insects are coming out of the  
warm cracks where they have  
spent the winter. Which  
insects are buzzing around  
the trees in blossom? Why?

The buds on trees are  
beginning to swell.  
Have any burst open?  
What do the new leaves  
look like?

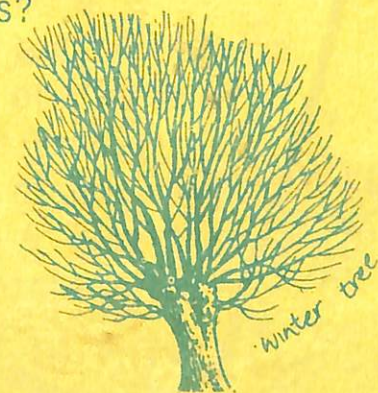
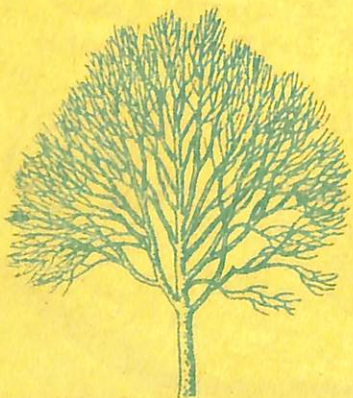
Birds are coming back.  
(Where from?) They are  
looking for a place to  
build their nests. Why  
do they want safe places  
for them?



What is the difference  
between a winter tree and  
a spring tree?

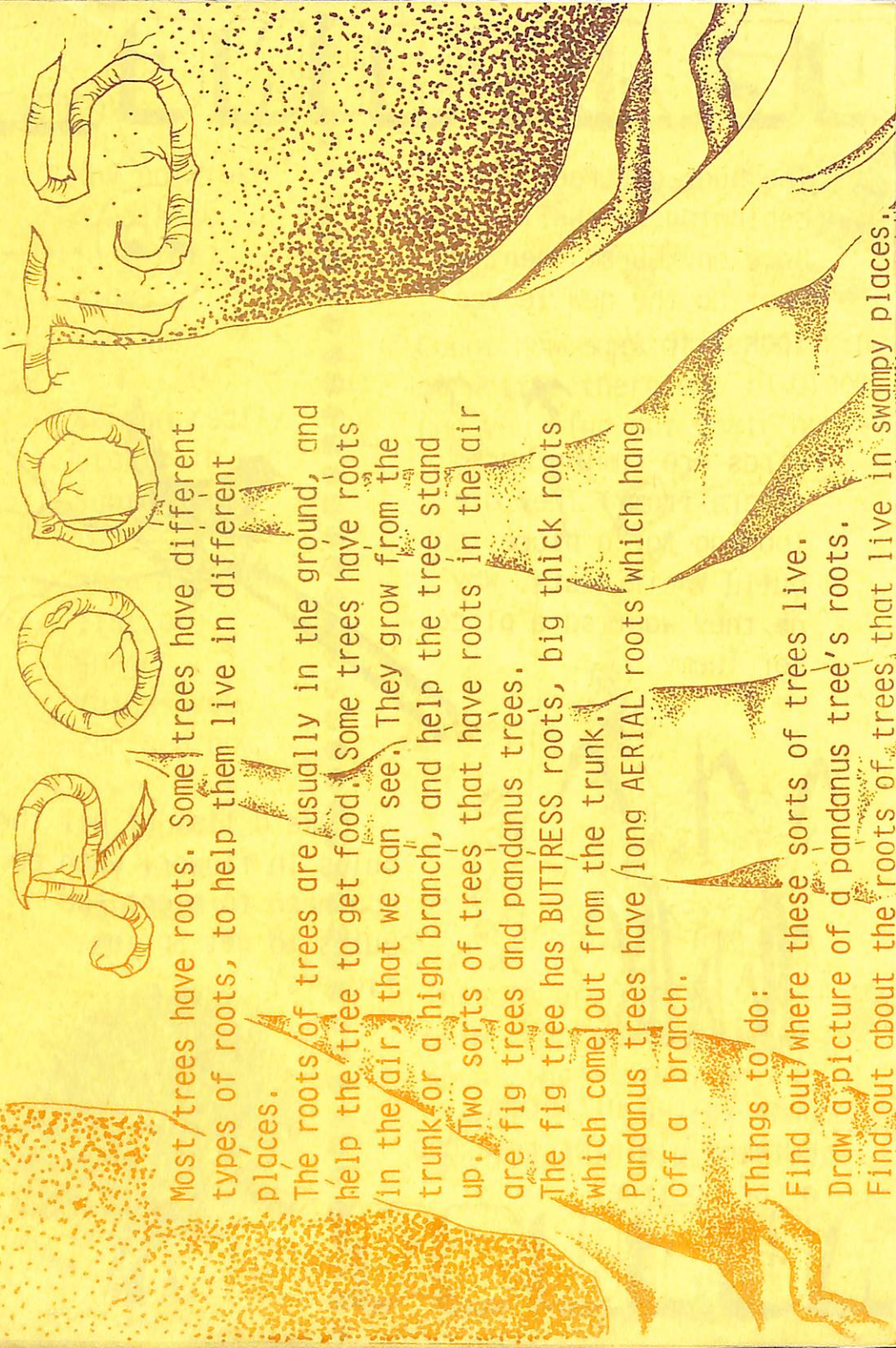


Make a list of all the  
bulbs in flower. When do  
you need to plant the  
bulbs to get Spring  
flowers?



## IN AUGUST





Most trees have roots. Some trees have different types of roots, to help them live in different places.

The roots of trees are usually in the ground, and help the tree to get food. Some trees have roots in the air, that we can see. They grow from the trunk or a high branch, and help the tree stand up. Two sorts of trees that have roots in the air are fig trees and pandanus trees.

The fig tree has BUTTRESS roots, big thick roots which come out from the trunk.

Pandanus trees have long AERIAL roots which hang off a branch.

Things to do:

Find out where these sorts of trees live.

Draw a picture of a pandanus tree's roots.

Find out about the roots of trees that live in swampy places.

# SNIFFING ABOUT.....



Have you ever crushed a eucalyptus leaf and smelt it? You're able to tell the type of tree it is by the smell that the leaves make. There are lots of plants we can "smell out". Can you think of any?

How about these: mint, jonquils, lavender and daphne. What about the herbs in the kitchen? They all have very strong smells that we use with our food. Try and name some of them by their smell.

Some native plants have very strong smells too. Apart from the eucalyptus family, there is the boronia, the hoya, the camphor bush, and sweet jasmine.

Test your friends "sniff power".

Blindfold him or her and see if they can "sniff out" the names of plants by their smell. Take them on a "sniff walk" around the school, or test them on kitchen items

like herbs.



I can smell....  
FOOD!

Happy Sniffing!



—M. CARMICHAEL—



THANK-YOU FOR ALL THE ENTRIES, ERNIE AND BRUCE HAD A VERY HARD JOB TO PICK THE WINNERS!!

Probe Competition Winners:

Kirsty Binnie, Thoona Vic.  
Travis McLean, Langwarrin Vic.  
Melinda Hodges, Bacchus Marsh.

Oh No! Not  
more of the  
editor's  
riddles!



Q. What kind of stones  
are found in the Murray  
River?

A. Wet ones.

Q. What has no  
hands or  
feet

but  
can  
climb a  
fence?

A. A Vine.

Q. What planet can you see  
more than any other?

A. Earth.

Q. Why doesn't  
the world's biggest  
animal have any feet?  
A. Because it's a blue  
Whale.

Q. Why does a spider spin a web?  
Because he can't knit.

Q. What does an ape  
carry on his shoulders?  
A. His head.

Q. What followed the  
dinosaurs?

A. Their tails.

# R I D D L E S

'PROBE' - A Ringwood Inspectorate  
publication.