

'Probe' Registered by Australia Post, Publication Number VBH0881

PROBE



December 1982

Vol 8 No 10

CHRISTMAS BELLS



Christmas Bells are red and yellow flowers which grow in New South Wales, Queensland and Tasmania during the summer. They have long leaves which look like blades of grass. They have special seed boxes that are turned upward. This is so the seeds will be thrown away from the Christmas Bells plant, and a new plant will grow in another area. This is how the plants spread. The plants are often found in swampy places.

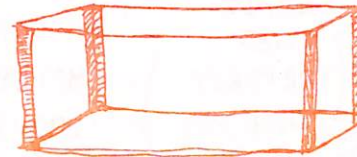


*Sleigh bells in northern lands,
Where Christmas comes with snow,
But flower bells in Australia,
Where Christmas wildflowers grow.*

Nuri Mass.

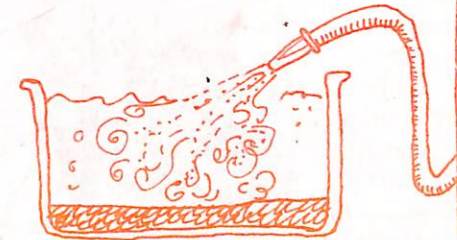
Grow Your Own

Water gardens can be made in a baby's bath or an old tub. Find a sunny sheltered spot for your garden.



You could use an old fish tank.

Put a layer of soil 10cm deep in the tub. Fill it with water and let the soil settle to the bottom.



BY M. CARMICHAEL

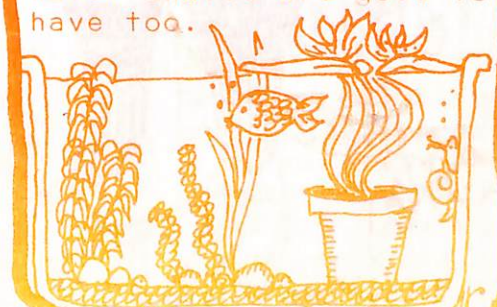
You can buy water weeds, snails and small fish from pet shops. Put a stone on the plants to stop them floating to the top, when you place them in the water garden.



You can buy lilies for your garden. Put the plant and the pot it comes in, into the garden. The lilies will grow to the top of the water.



The plants give oxygen for the fish to breathe, and keep the water clear. Water snails are good to have too.



Watery Weeds



WARM WEATHER



LIGHT
COLORED CLOTHES
ARE BEST
BECAUSE
THEY
REFLECT
THE
HEAT.

If you go 'bush' this summer, here are a few tips to help you keep cool and safe while you are hiking or walking.

Bruce is wearing all the proper gear for bush walking in the summer. Why would he need heavy boots and socks in the bush?

It is a good idea to keep a loose, long sleeved shirt on, to help protect you from SUNBURN. You can turn the collar up to help keep the sun off your neck. Do you know why this is important?

If you do get very hot when you are walking, rest for a while in the shade, and wear a wet scarf or handkerchief around your neck.

Do you know why it is better to wear light colored clothes in hot weather?

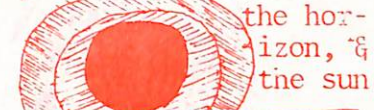
When you are walking, remember that many small drinks of water will keep you cooler than gulping lots at once.

And if you are camping out at night, remember to take the mosquito nets, or you may be awake all night.

WINNERS

hot hints

You can tell how long it will be before the sun goes down, by seeing how many fingers you can fit between



the horizon, & the sun



Each finger is worth about 10 minutes.

One person needs about a litre of water a day. On hot days you will need more. Why?

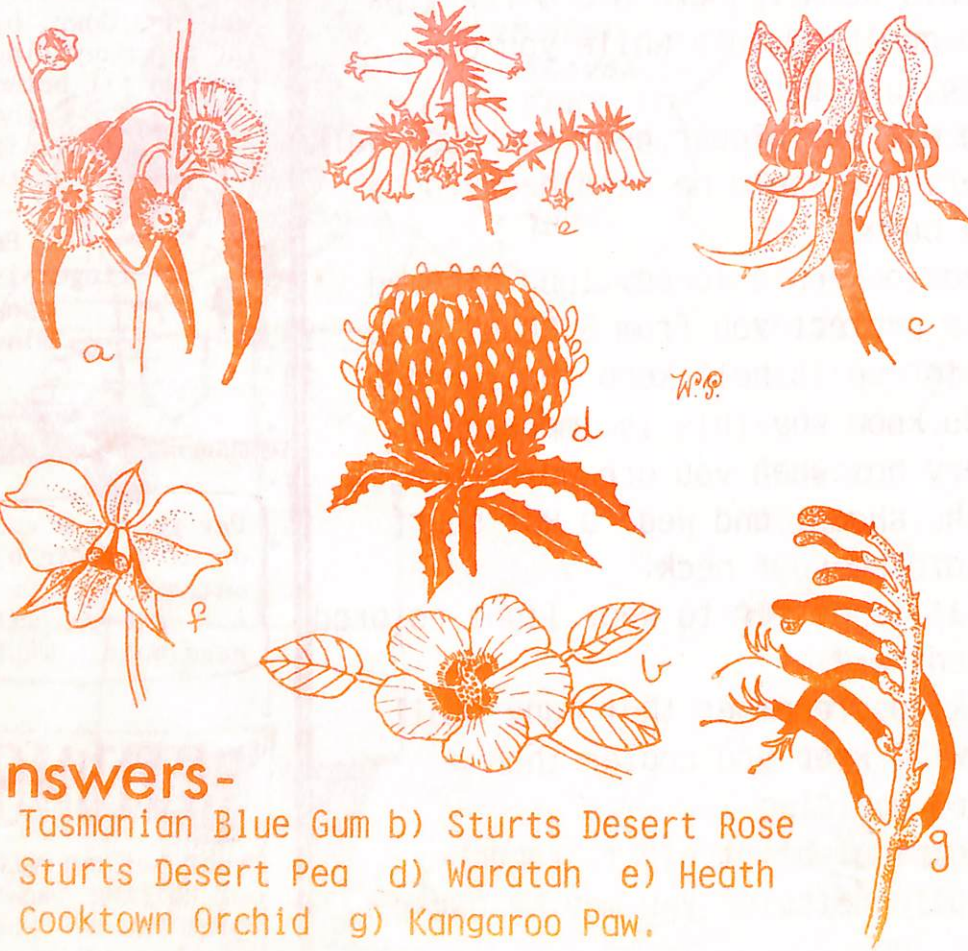
WARNING!

Never set out without telling someone where you are going and when you'll be back. This makes it easier for people to decide whether you are safe or not.

BY M. CARMICHAEL

flower ~ power

Can you name each of these FLORAL EMBLEMS and then say which state of Australia each one stands for?

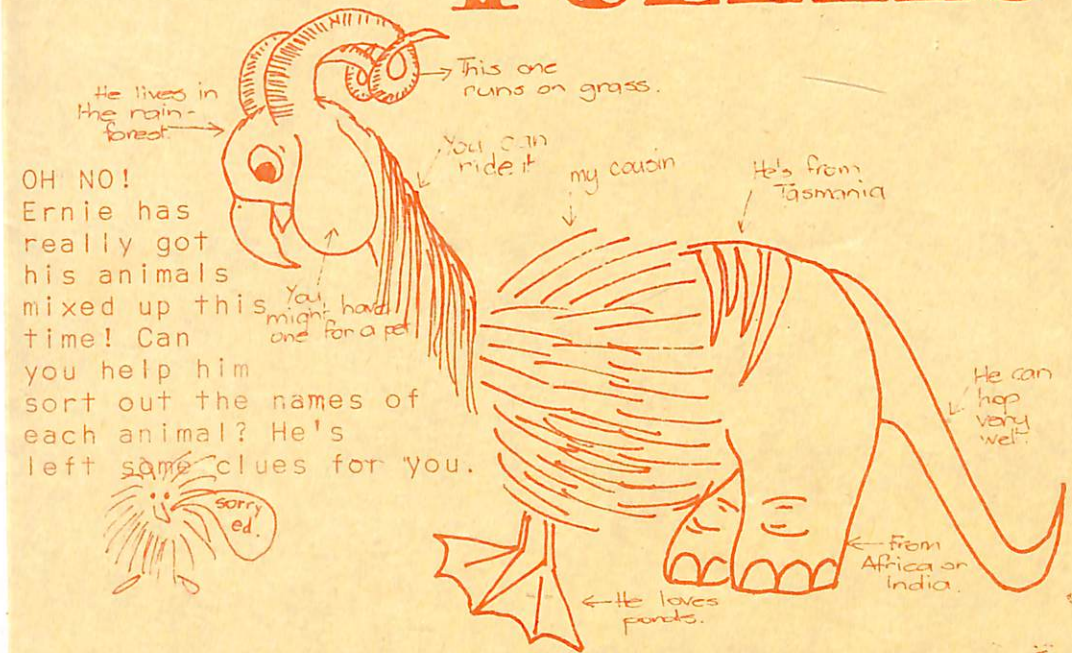


answers-

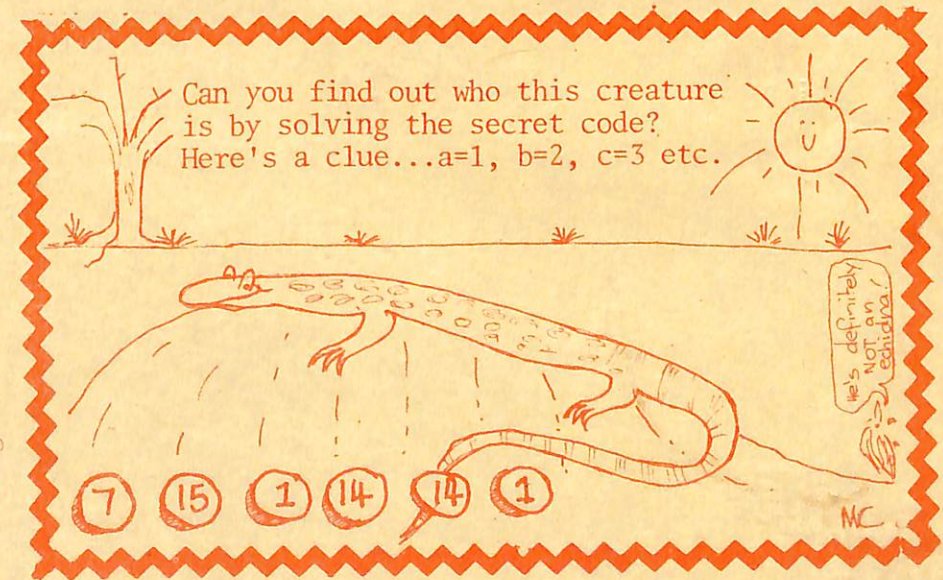
- a) Tasmanian Blue Gum b) Sturt's Desert Rose
c) Sturt's Desert Pea d) Waratah e) Heath
f) Cooktown Orchid g) Kangaroo Paw.

a-Tasmania b-Northern Territory c-South Australia
d-New South Wales e-Victoria f-Queensland
g-Western Australia.

PUZZLES

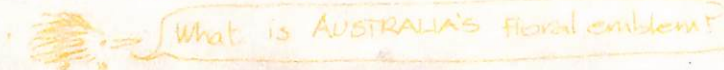


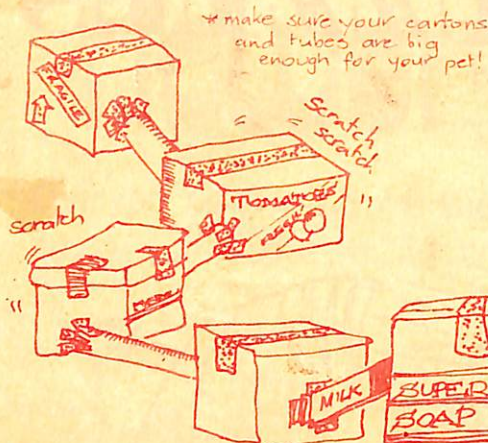
What do gorillas sing at Christmas?
- Jungle Bells, Jungle Bells.



ANSWERS FOR ERNIE'S ANIMAL: parrot head, rams horns
horse's mane, dog's ears, echidna's chest, duck's
feet, tasmanian tiger's back, elephant's back legs,
kangaroo's tail.

What's a crocodile's favourite game? - Snap.





Caged animals need places where they can get away from people. You can make a 'Guinea Pig City' from lots of old cardboard cartons and tubes. Tape them together with strong packaging tape, to make rooms and tunnels. Put air holes in the sides of the boxes. You will be able to hear your animals in the city. Remember to close off all the city, so your animals don't escape! Don't leave them in there too long, or they will eat their way out.

Pet City



1983 ORDER FORM

There are 10 copies of both 'Nature Notes' and 'Probe' each year.

Prices: Nature Notes...23c per copy, or \$2.30 per yr.
Probe....12c per copy, or \$1.20 per year.

*Prices include postage.

TO ORDER...

NAME.....

ADDRESS.....

.....

* I WISH TO ORDER *
* NATURE NOTES *
* PROBE *

RECEIPT REQUIRED ☐ YES ☐ NO.

PAYMENT IS INCLUDED ☐ YES ☐ NO.

You don't have to pay now, we'll invoice you early 1983, if you wish!

SEND TO: P.O. BOX 28 RINGWOOD EAST VIC 3135.



NO PRICE RISE!