


NATURE PROBE

Aussies
are
ACE

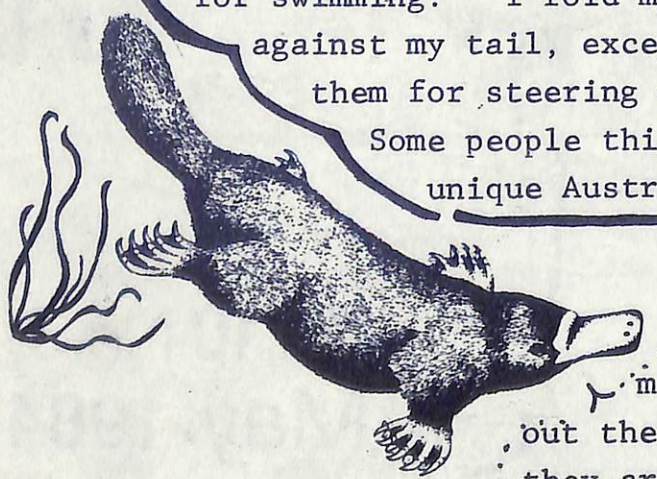


Vol.10 No.3
May 1984

Let's meet a few Special AUSSIES



I'm a Fairy Penguin. I'm also called a Little Penguin. There are 18 species of penguins in the world, and I'm the smallest. We are the only penguins to breed in Australian waters.




Hi! I'm a Platypus, and I'm a monotreme. That means that I'm a primitive egg laying mammal. My duck-like bill only looks like a duck bill in shape, as it is like soft rubber, and very sensitive. I have four webbed feet. I only use the front feet for swimming. I fold my back feet up against my tail, except when I use them for steering or brakes.

Some people think I am the most unique Australian mammal.

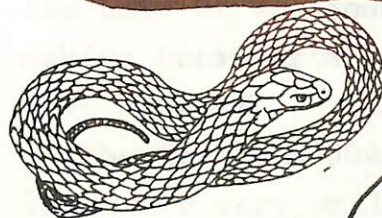
There are two Echidnas that are monotremes. Find out their names and how they are different.



Have you heard me laughing? I'm a Kookaburra, and I'm the largest member of the kingfisher family. Look for me in open forests and woodlands. I live in a family group of up to 12 birds. We have our own territory.



I'm a Blue-tongued Skink. The Scrub Mullet and I are among the world's largest skinks. I've a relation called a Pink-tongued Skink.



Ssss so pleased to meet you! I'm a Tiger Snake. The Australian Taipan and I are two of the world's most poisonous snakes. Our venom is more poisonous than the cobras of Africa and Asia, and the mambas of Africa.

Hey, editor! What about Bandicoots? Bruce has a very long nose, and he's special because he is my friend, and he works so hard at Nature Probe.



SILVERFISH



I've been trying to interview a silverfish but they keep running away!!

I'd love to tell the reporter how my silver coat is made of tiny delicate scales, but I'm too shy to come out.



Silverfish are NOCTURNAL. This means that they are active at night.

If you open a cupboard and disturb one it runs away very quickly. They prefer the dark, and are really running away from the light and not you.

They eat anything containing starch. They will eat crumbs off the floor, or the paste on the back of wallpaper. Some glues used in making books have starch in them, and they eat this as well.

The female silverfish lays 7 - 12 eggs. These are very small. They hatch between 6 - 60 days. It depends on the temperature. The young look like adults except they are tiny. They moult several times before they reach adult size.

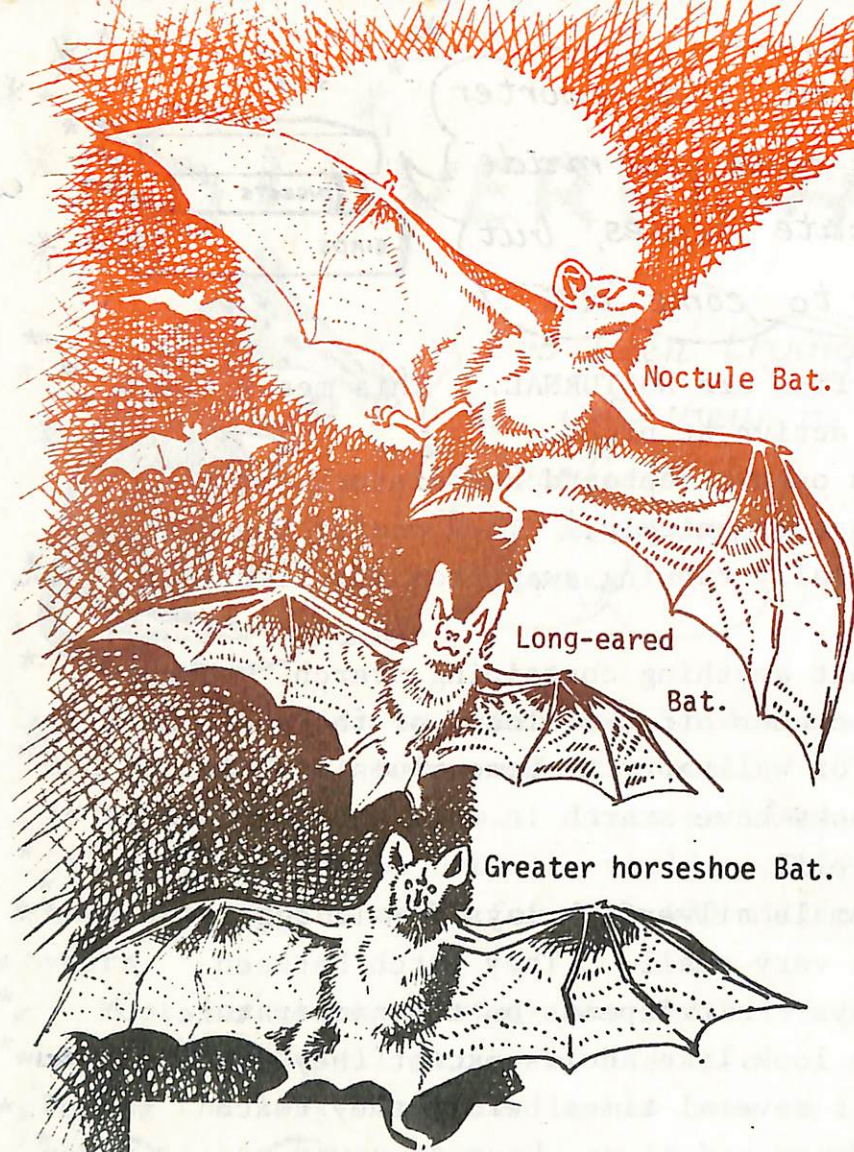
The silverfish so often seen in drawers and cupboards at home, and at school, is certainly not a fish. It is an insect. Silverfish live all over the world. They have been on the earth for over 400 million years.

Most insects have wings but the silverfish is wingless at all stages of its life. During the long time that it has been on earth it has never changed, so it has never had wings.

They are also different from other insects because the young look like their parents. The only way they change during their life is that they grow bigger.

I'm off, before the editor sees what I've eaten!





Noctule Bat.

Long-eared

Bat.

Greater horseshoe Bat.

Things to find out:

- * Where do bats go during the day?
- * Are you sure what a mammal is?
- * What is a nocturnal animal?
- * Do all bats live in large groups?

BATS



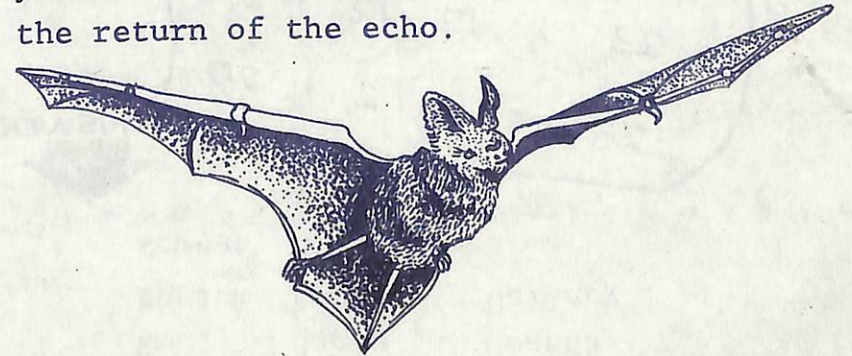
Bats are Mammals. They are common on autumn evenings, and may even come into houses in search of insects.

There are two groups of bats,

- 1) the smaller insect-eating bats.
- 2) the larger fruit-eating bats.

Of all the mammals bats are the only ones that can fly like birds. Some mammals glide, but bats really fly. Bats are NOCTURNAL.

Isn't it amazing that they can fly in the dark without bumping into things. They do not have special eyes, and cannot see very well. They use a system like sonar and radar, but they use echoes. They send out a sound. It is so high pitched people cannot hear it. They can tell where something is by the delay in the return of the echo.



You be the DETECTIVE!

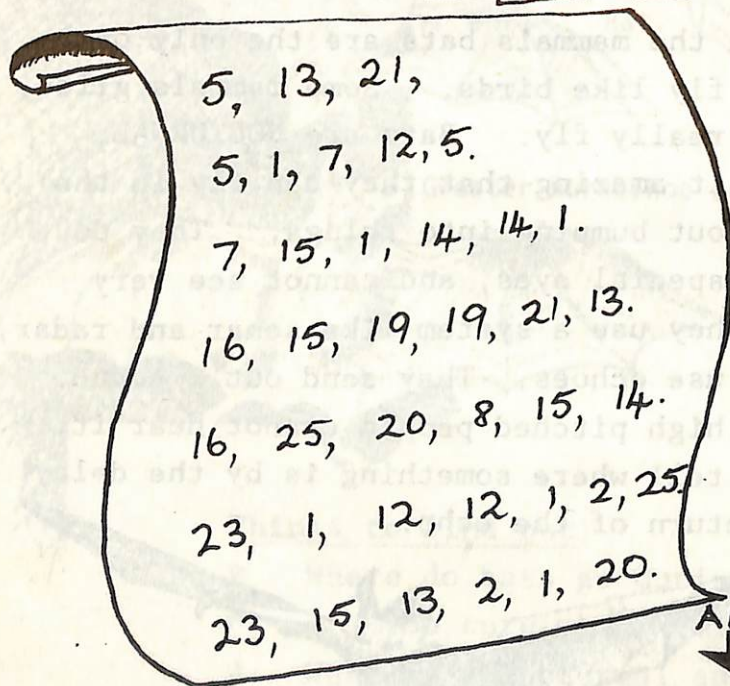


USING THE CODE,

DISCOVER THE HIDDEN ANIMALS..

A	B	C	D	E	F	G	H	I	J	K	L	M
1	2	3	4	5	6	7	8	9	10	11	12	13

N	O	P	Q	R	S	T	U	V	W	X	Y	Z
14	15	16	17	18	19	20	21	22	23	24	25	26



ANSWERS



Emu Eagle Goanna
 Possum Python Wallaby
 Wombat.

"Nature Probe" Maroondah Regional Publication. Registered by
 Australia Post. Publication No. VBH0881.
 "Nature Notes" P.O.Box 28, Ringwood East, Vic. 3135.