

NO.7

VOL.11

NATURE

SEPTEMBER

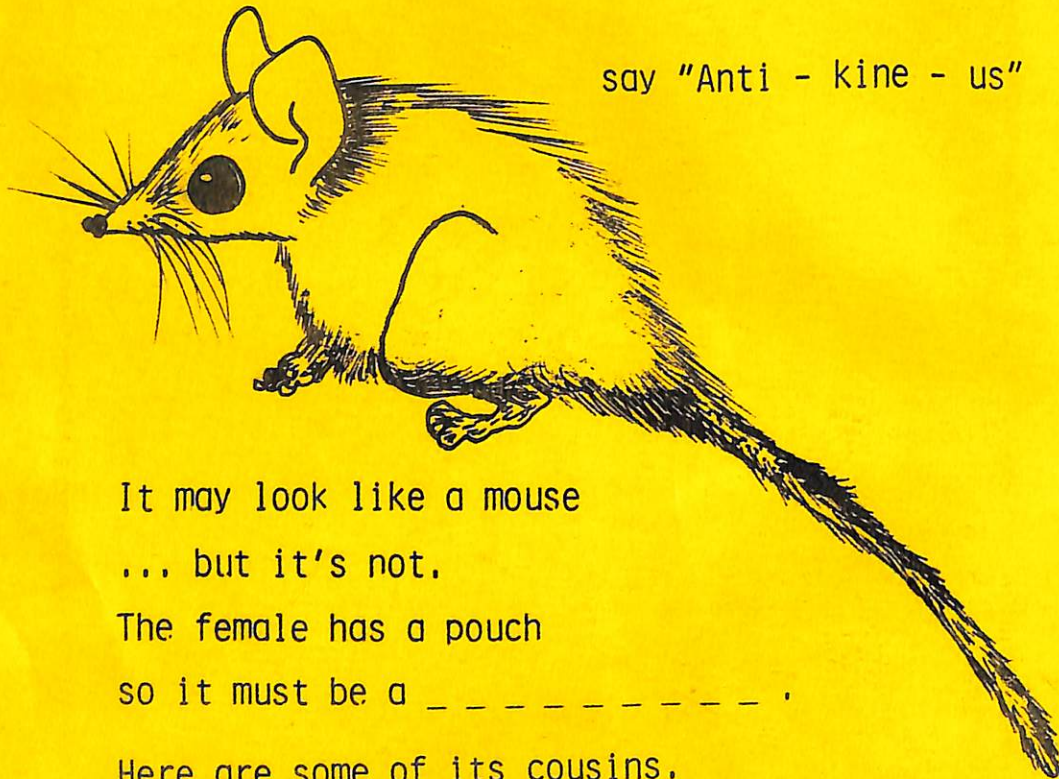
1985

PROBEN





# MEET THE ANTECHINUS



It may look like a mouse  
... but it's not.

The female has a pouch  
so it must be a \_\_\_\_\_.

Here are some of its cousins.

Tasmanian Devil



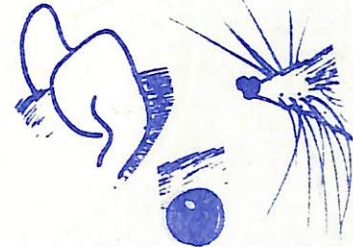
Thylacine (extinct?)

Eastern Quoll (has not been seen in  
Victoria for 30 years).

The antechinus moves around the forest at night finding insects to eat (sometimes even mice as large as itself.)



It has: **1** long \_\_\_\_\_,  
**2** large \_\_\_\_\_,  
**3** large \_\_\_\_\_.



How do these help ?

Which night bird might eat the antechinus ?

Next time you go for a bush walk there will  
be antechinuses around. Will you see any ?

## WHERE CAN YOU SEE AN ANTECHINUS ?

In the Nocturnal House at Healesville Sanctuary.

Here, day is changed into a moon-lit night.

Come and see the antechinus and some of its  
cousins - quoll

- kowari

- dunnart

What unusual names!

What do you think the nocturnal house animals  
do when the visitors go home ? \_\_\_\_\_



Here are his eyes. Here is his tail.



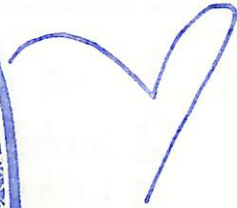
What does this marsupial look like???

Rest of his face???

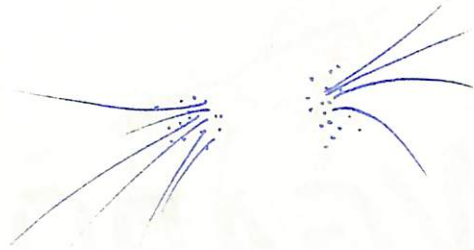


Here is an animal's nose. Can you draw the rest of his face???

What can this be???



What parts of a Marsupial are these???



Who is this???



Here is an animal's tail. What does he look like???



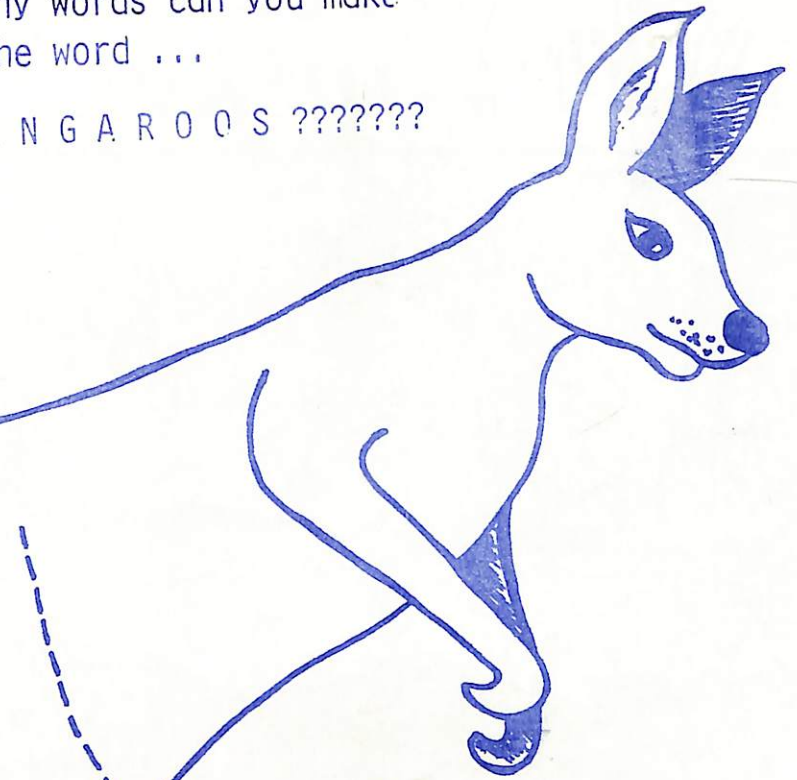


At the Healesville Sanctuary, kangaroo joeys are often seen. Sometimes a joey can be seen looking from its mothers pouch, or jumping near its mother.

How many words can you make from the word ...

K A N G A R O O S ????????

KANGAROOS



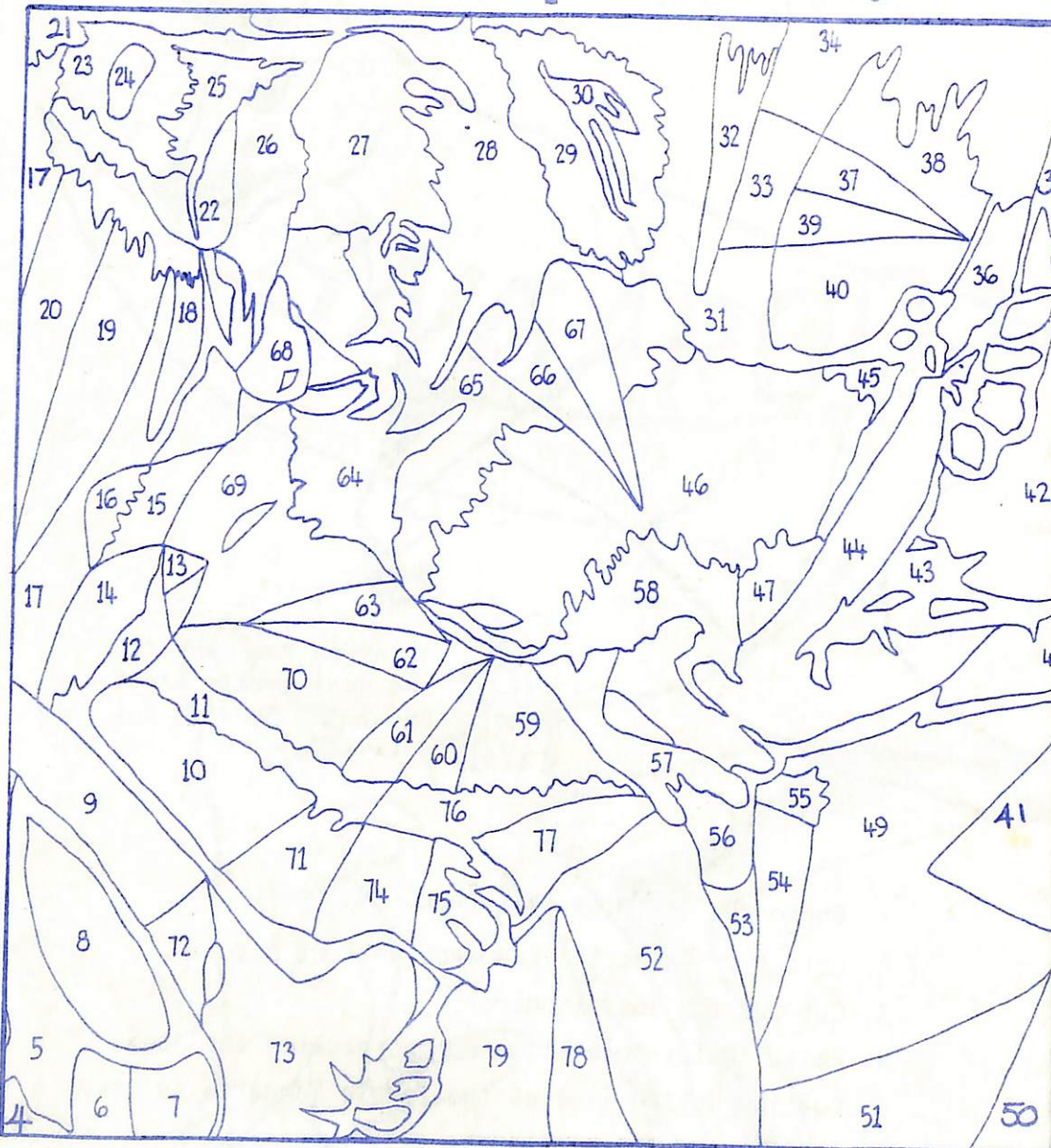
Thankyou Ros Kent from the Healesville Sanctuary Education Service for this activity.

1. Photocopy or trace this page.
2. Colour or paint the kangaroo and cut out.
3. Cut out the joey kangaroo.
4. Paste an icy-pole stick on the back of the joey.
5. Cut the dotted line on the female kangaroo to make the opening for her pouch.
6. Push the joey up and down in the pouch.



• To reveal the mystery picture colour in only those areas with a number you can find in the number list below.

# MYSTERY PAGE....



• Number List : 4 5 6 11 12 16 17 19 20  
21 25 28 30 31 33 34 35 43  
47 52 53 56 58 64 76 78 68



Mother koalas give birth to one or two offspring. It is impossible for more than two to survive as the koala has only two teats in its pouch.

The baby lives in the pouch until six months old then climbs onto its mother's back and clings there until able to survive alone.

IT NEVER RE-ENTERS THE POUCH.

A mother koala must wean her baby from milk onto gum leaves gradually. To allow the special digestive system of the baby to adapt she allows partly digested gum leaves to pass right through her body. The baby in the pouch puts its head into mother's bottom and eats this yellowish food.



# The Tasmanian Devil



A baby Tasmanian Devil, like all other marsupials, is born only partly developed and must find its way through the mother's fur into the pouch. This faces backwards and has four teats so no more than four babies can survive! Babies remain in the pouch for almost four months and then take cover in a soft padded nest built in a wombat burrow or hollow tree-trunk. Mother and father both look after the young.

Trace the sentence below around the letter maze. Move one letter at a time either down or across (forwards or backwards). Use each letter once only and do not cross your path.

Start Here

D	E	D	I	N	M	A	I
A	V	E	V	I	L	E	N
I	I	L	S	O	N	C	L
N	A	D	O	T	T	U	A
A	Y	A	L	I	A	B	N
M	A	R	T	S	U	A	D
S	R	E	F	O	U	N	D
A	T	N	I	Y	L	N	O

Devils once lived in mainland Australia, but today are found only in Tasmania.

## Subscription Form

SEND ORDERS TO: "NATURE NOTES"  
P.O. BOX 248.  
HEALESVILLE.  
3777  
Phone: 059 62 3422

NAME: \_\_\_\_\_

POSTAL ADDRESS: \_\_\_\_\_

I WISH TO ORDER:

☐ subscriptions of Nature Notes for grades 4, 5 & 6 at \$3.00 for 10 issues.

☐ subscriptions of Nature Probe for grades 2 & 3 at \$2.00 for 10 issues.

DISCOUNT FOR ORDERS OVER 50 !!  
Nature Notes \$2.60 for 10 issues.  
Nature Probe \$1.60 for 10 issues.



"Learn to put up with a little rain — like your brother does."



"Babysitting time's up! Come and get your joey!"



# A JOEY GETTING INTO A POUCH

FIND OUT:

In which direction does the koala and wombat pouch face ??????????

-----  
-----  
-----  
-----  
-----

How does the pouch help the baby?

-----  
-----  
-----  
-----

What do we (people) use to carry around babies?

Kangaroos use pouches, people use ...

-----  
-----  
-----  
-----



Nature Probe. A Maroondah Region Publication  
Reg. Aust. Post Publication No. VBH0881  
P.O. BOX 248 HEALESVILLE 3777  
Phone (059) 62 3422