



**Belgrave and Lilydale lines** November 2024

# Level crossing removal community update



## Lilydale Line level crossing free – a year ahead of schedule

**The Lilydale Line is now level crossing free  
and more frustrating boom gates are gone  
on the Belgrave Line.**

With no level crossings on the train line, journeys will be faster and local roads will be safer for commuters, cyclists and pedestrians.

With the removal of the Bedford Road, Ringwood level crossing earlier this year, the Belgrave Line is now level crossing free from the city to Ferntree Gully.

Since 2017, the Level Crossing Removal Project has removed 9 level crossings and built 6 new stations along the Lilydale Line, which together with the Belgrave Line, is Melbourne's second busiest rail line on the network, used by more than 72,000 passengers each weekday.

Getting rid of these crossings has eliminated more than 5 hours of boom gate down time from the Lilydale Line in the morning peak and reduced frustrating delays for the more than 123,000 vehicles travelling through these crossings every day.

Separating trains and vehicles along the busy rail line has also made the road and rail network safer for all users.

These projects are part of the biggest upgrade on the Belgrave and Lilydale lines since they were electrified in the 1920s.

The Victorian Government has committed to removing 110 dangerous and congested level crossings by 2030, with 84 already gone for good.

### Benefits delivered across the Belgrave and Lilydale lines



12 level crossings  
removed



7 new stations  
and one upgraded  
station



More than 7km of  
new walking and  
cycling paths



More than 300,000  
trees, shrubs and  
grasses planted



**Sign up for updates**  
[levelcrossings.vic.gov.au](https://levelcrossings.vic.gov.au)





# Two new stations in Melbourne's east

Trains are running on the boom-gate free Lilydale Line after major construction works in Ringwood East and Croydon to remove the last two remaining level crossings on the line and build two new stations.

In Croydon, the new light-filled station features views out towards the Dandenongs and is fully accessible with two entrances, lifts, stairs, toilets, a waiting room and two elevated platforms. The station is part of the new Croydon Transport Hub, which will feature a 14-bay bus interchange, car parking for 284 vehicles and 10 motorcycles, and new road connections.

In Ringwood East, the new station has a warm earthy toned canopy with skylights and lighting which welcomes passengers, and reflects the existing village feel of the area. The station will feature two entrances, lifts and stairs, improved lighting, CCTV and parking for around 460 vehicles along with new walking and cycling connections.



# New landscaping and open space in Ringwood

The Bedford Road, Ringwood level crossing was removed by lowering the rail line into a 380-metre trench, making the Belgrave Line level crossing free from the city to Ferntree Gully.

We've also built the missing pedestrian and cycling link that connects the 19.2-kilometre Heathmont Rail Trail to Bedford Park.

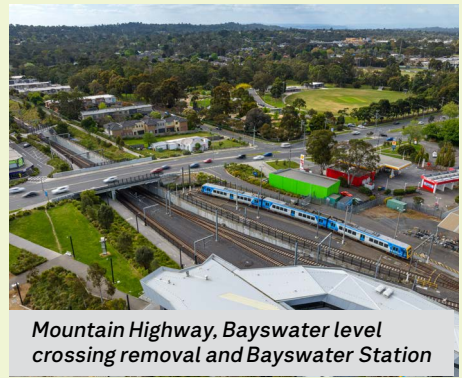
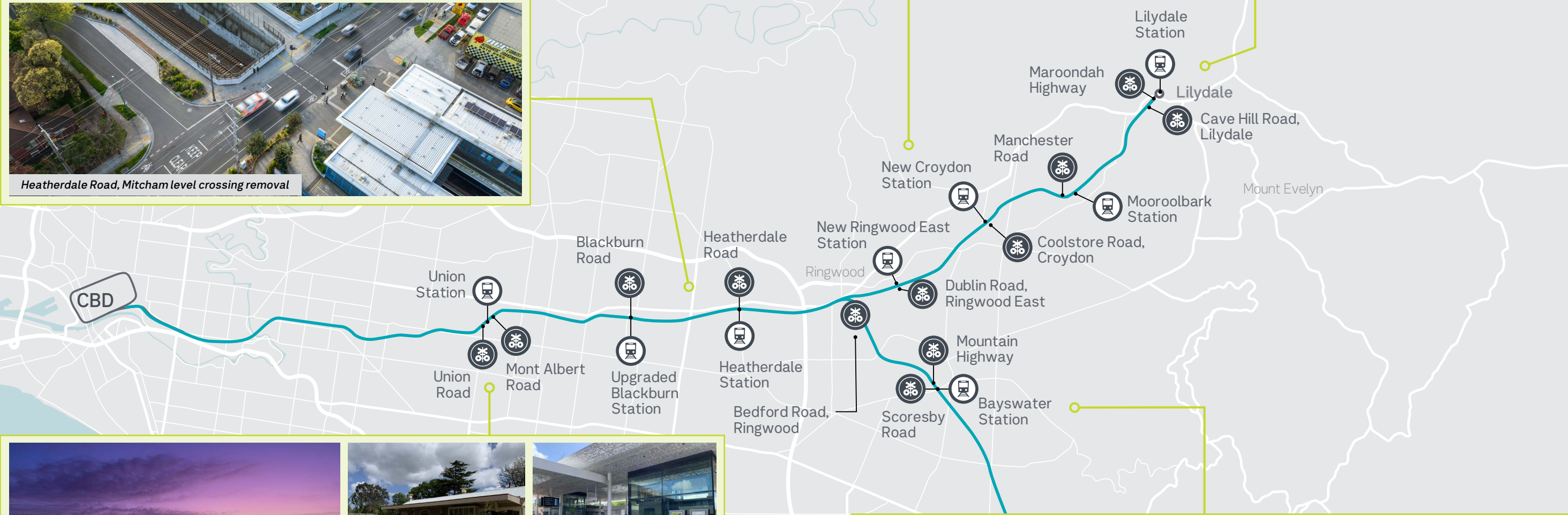
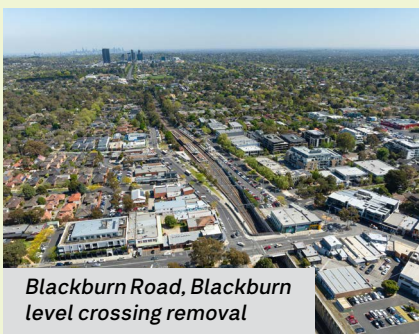
Landscaping works at Bedford Road and Dublin Road, include more than 60,000 native trees, plants and grasses planted across the local Ringwood area.

A new community green space on the western side of Bedford Road has now also opened for locals to enjoy.



# Belgrave and Lilydale lines

## Level crossing removal projects





# Works through spring

**Works will continue throughout spring in Ringwood East, Croydon and Lilydale while we add the finishing touches to the new station precincts and new pedestrian underpass at Cave Hill Road, Lilydale. We'll continue to keep the community informed on what to expect.**

## Ringwood East

We're completing the second station entrance, new landscaping, upgraded pedestrian and cycling paths and delivering around 460 car parks with more accessible spaces.

Other finishing works include reinstating local roads and walkways and removing temporary construction fencing and facilities.

*Looking west towards the new Ringwood East Station on Railway Avenue. Artist impression only, subject to change.*



## Croydon

We're adding the finishing touches to the new station and opening new road connections between Devon Street to Wicklow Avenue and Coolstore Road to Main Street. We'll also build new shared use paths and plant more than 70,000 new trees, shrubs and grasses.

When complete, the Croydon Transport Hub will include a new 14-bay bus interchange and car parking for 284 vehicles and 10 motorcycles.

*Aerial view looking east at the new Croydon Transport Hub. Artist impression only, subject to change.*



## Lilydale

The new underpass at Cave Hill Road, Lilydale opened on 26 September, providing locals with a safer connection across the rail line to Lilydale High School and nearby homes and businesses.

A new turning circle on Melba Avenue will allow for safer vehicle movements near Lilydale High School and local businesses.

Landscaping around the underpass is underway and includes Australian native species and trees such as red-flowering ironbark, blackwood, Illawarra flame and fire wheel.

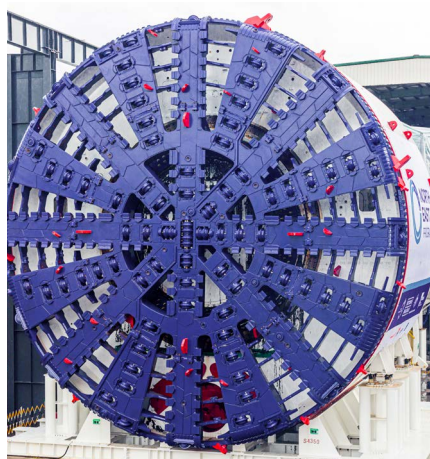
*View of the new pedestrian underpass from Melba Avenue. Artist impression only, subject to change.*





# Other Big Build projects in your area

VICTORIA'S  
BIG BUILD



North East Link tunnel boring machine



## Tunnelling starts on North East Link

North East Link is hitting important milestones on the way to delivering Victoria's longest twin road tunnels.

In a major step for the project, the two massive tunnel boring machines (TBMs) have started digging their way from Watsonia to Bulleen. Each TBM will operate 24 hours a day, excavate around 10 metres per day and up to 45 metres below ground.

Tunnelling will go well into 2026, ahead of the tunnels opening to traffic in 2028.

**The 6.5 kilometre tunnels will take 15,000 trucks off local roads every day and reduce travel times by up to 35 minutes, providing quicker and safer journeys between the north and the east.**

Eastern Freeway interchange connecting to North East Link. Artist impression only, subject to change.



## Eastern Freeway Upgrades

We're upgrading the Eastern Freeway with new express lanes, new traffic management technology and Melbourne's first dedicated busway.

These changes will fix bottle necks at key pinch points, slash travel times and improve public transport in Melbourne's east.

We'll also build new walking and cycling paths and new and upgraded noise walls built to Victoria's toughest noise standards.



Connect to the new 6.5km North East Link tunnels



15,000 trucks a day off local roads – giving local roads back to local people



18 traffic lights skipped between Eastern Freeway and M80 Ring Road



Reducing travel times by up to 35 minutes

## Metro Tunnel arrives 2025

Arden Station

Parkville Station

State Library Station

Town Hall Station

Anzac Station

Five new train stations means more travel choices








Get to know  
Metro Tunnel

[levelcrossings.vic.gov.au](https://levelcrossings.vic.gov.au)

[contact@levelcrossings.vic.gov.au](mailto:contact@levelcrossings.vic.gov.au)



For languages other than English, please call 9209 0147.

1800 105 105 (call anytime)     

Please contact us if you would like this information in an accessible format. If you need assistance due to a hearing or speech impairment, visit [relayservice.gov.au](https://relayservice.gov.au)

