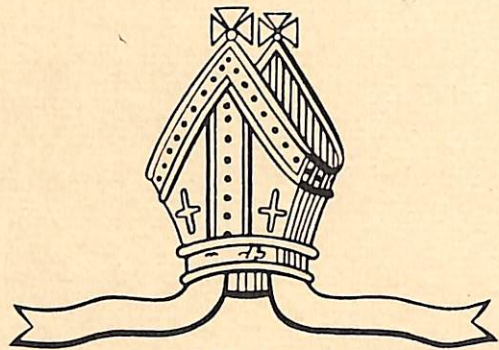
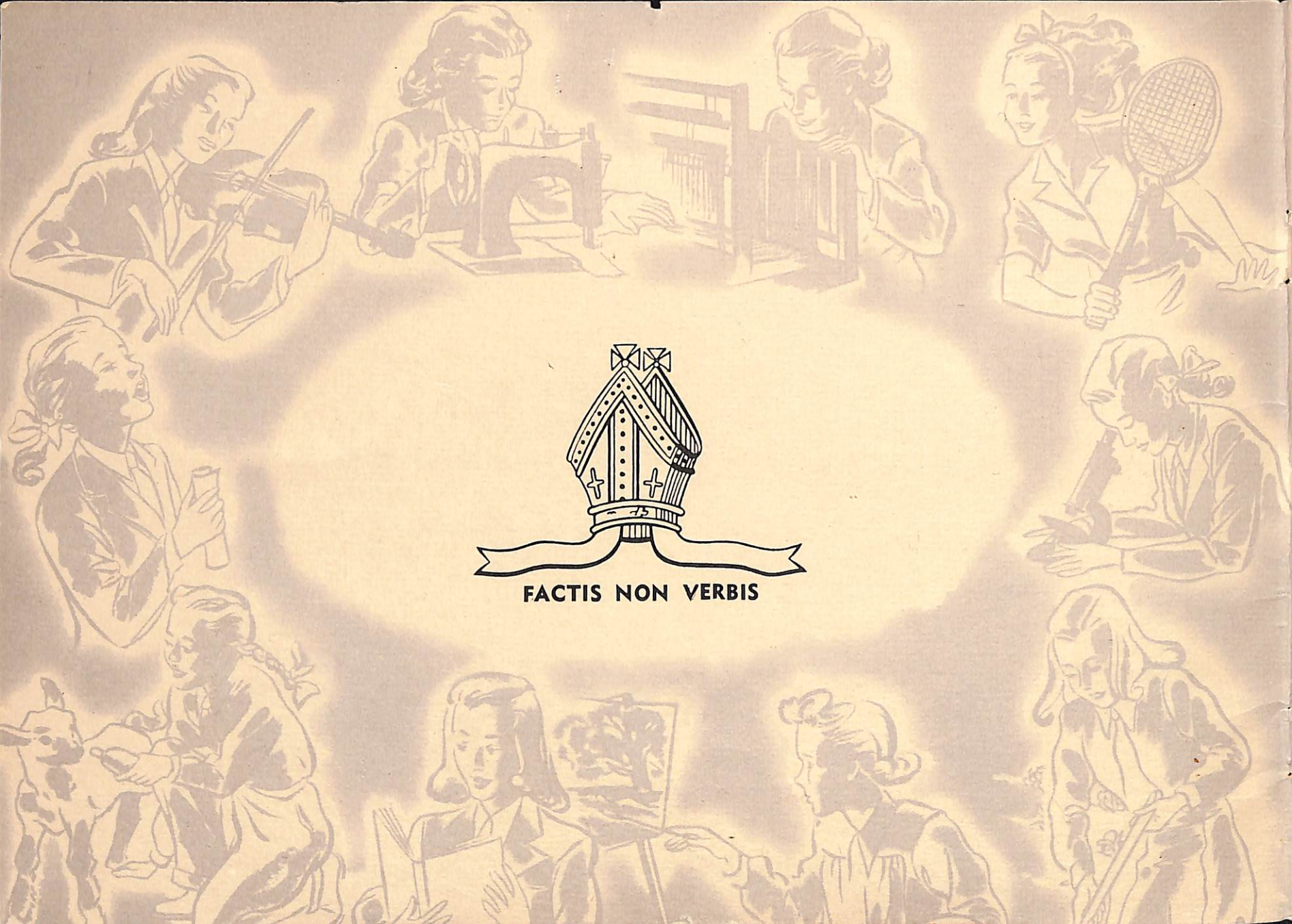




TINTERN

CHURCH OF ENGLAND GIRLS
GRAMMAR SCHOOL



FACTIS NON VERBIS

FOREWORD

Tintern one of the oldest girls schools in Victoria, was founded in 1877 by Mrs. Emma Bartlett Cook. It was then known as Tintern Ladies College. In 1918 it was taken over by the Church of England.

From its inception it has sent out into the world women who have played an important part in the life of the community — as Doctors Scientists, Lawyers, Teachers, University Lecturers Heads of Schools and Colleges Musicians Artists Architects, Nurses, Missionaries, Social Service Workers Journalists Business Women and Home-Makers. Tintern girls have served their country in the Boer War and in the two World Wars.

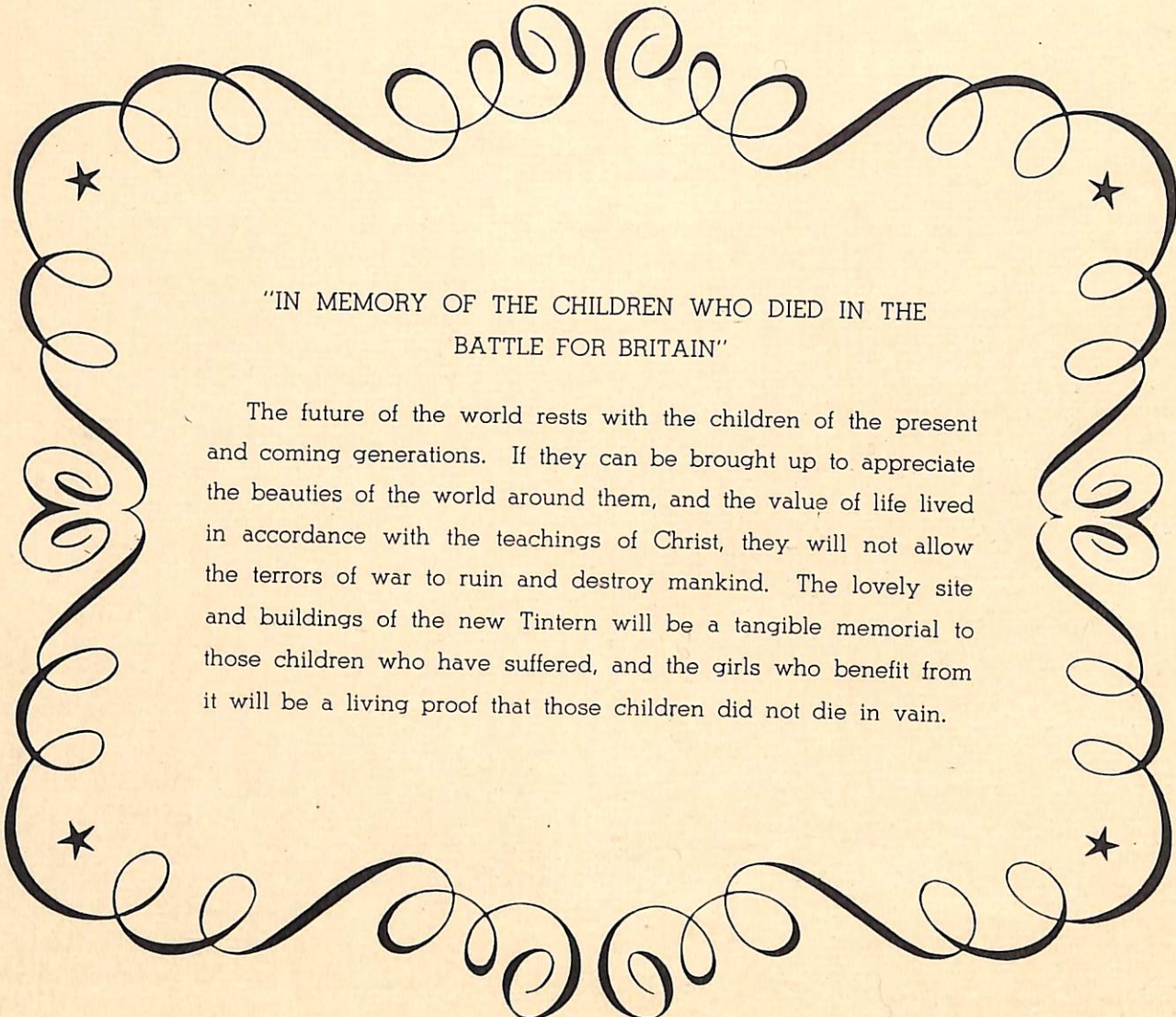
The school has maintained throughout the years, a high scholastic standard. It has achieved outstanding successes in the Public Examinations in both Arts and Science subjects. In this year 1948 thirty Tintern girls are doing courses at the University.

In Mrs. Cook's day the school was noted for its music. It has now a flourishing orchestra, and Tintern choir was amongst those chosen to broadcast in Education Week 1947. Art and Craft have an important place in the curriculum.

Games, such as hockey, tennis and croquet were started as early as the 1880s. In 1900 the girls were daring enough to start a bicycle club. Nowadays Tintern plays baseball, basketball hockey and tennis.

As the years have passed the curriculum has been widened and buildings have been added —the senior classrooms in 1918 the laboratory block in 1930 the Junior School (the gift of Sir William Angliss) in 1937 the library (the gift of Mr. E. R. Cullen) in 1938 the craft house in 1938 and the Domestic Science kitchen in 1946.





"IN MEMORY OF THE CHILDREN WHO DIED IN THE
BATTLE FOR BRITAIN"

The future of the world rests with the children of the present and coming generations. If they can be brought up to appreciate the beauties of the world around them, and the value of life lived in accordance with the teachings of Christ, they will not allow the terrors of war to ruin and destroy mankind. The lovely site and buildings of the new Tintern will be a tangible memorial to those children who have suffered, and the girls who benefit from it will be a living proof that those children did not die in vain.

THE NEW SCHOOL

*Stone laid
10-6-50*

The New School will be built on fifty acres of land seven minutes' walk from East Ringwood Station, and 17 miles from Melbourne. It will have the advantages of both town and country, the beauty of a rural setting native bush and views of the mountain ranges, and it will be easily accessible to Melbourne for inter-school games, lectures, exhibitions, and concerts. The district is being developed as a residential area, but girls living nearer town will travel against the traffic and so escape the peak crowds.

Although there will be both junior and senior schools at East Ringwood, the junior school at Hawthorn will still continue.

The Head Mistress has recently returned from a visit to Britain, Sweden, Denmark, Canada and U.S.A., during which she collected ideas on buildings and equipment which will be used in the new school. A special feature, unusual for girls, will be the model farm, with courses in Agriculture and Horticulture.

The aim of the new Tintern will be to provide a sound education for about 450 girls from Kindergarten to Matriculation.

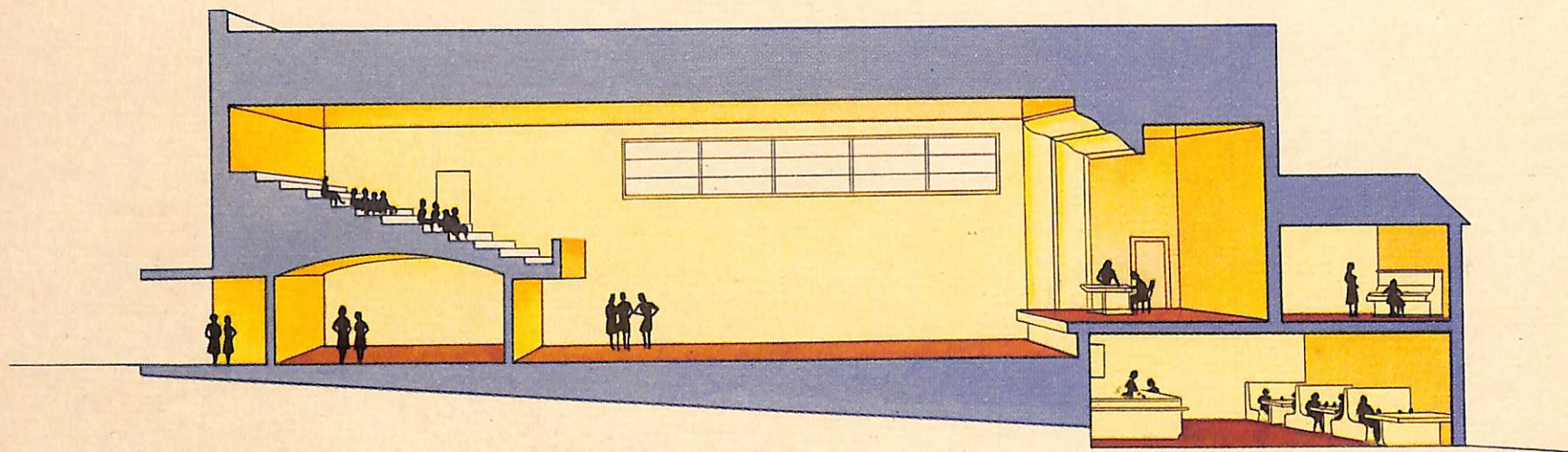
The report on a recent Government Inspection, after favourable comments on the work being done at present, closes thus—

"The erection of a modern school on the new site at Ringwood East will add greatly to the educational facilities of the Eastern Suburban Area. The School Authorities are to be congratulated on this forward educational move."



BOARDING - HOUSE

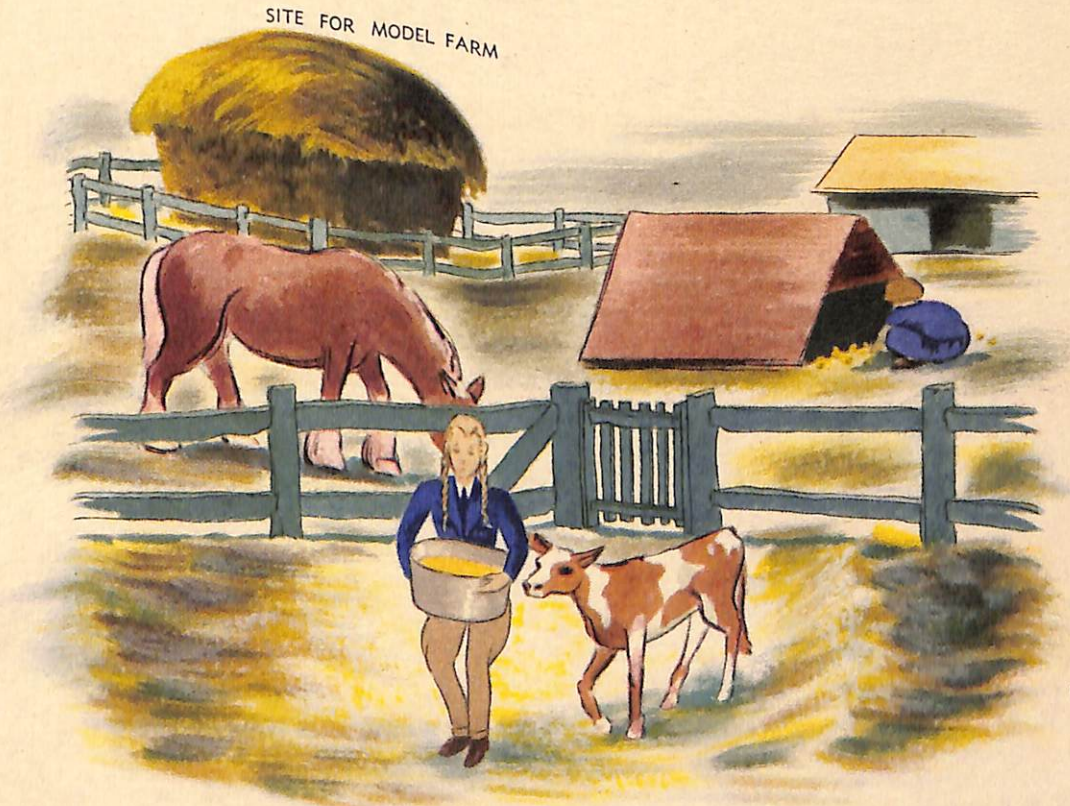
SITE FOR NEW SCHOOL BUILDING AND PLAYING FIELDS

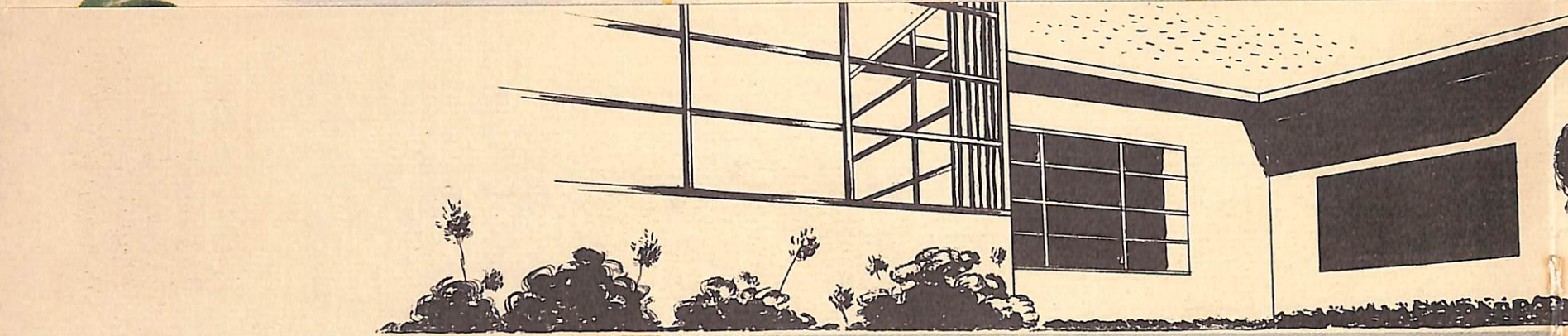


THE ASSEMBLY HALL will include a large stage with dressing rooms that will be sound-proofed for use as music rooms, and a gallery under which will be cloakrooms. A cafeteria, where the day girls may eat their lunches, will adjoin the hall, and will be used as a supper room for dances and social functions. It is hoped that the hall will be a centre not only for the school, but for the district.

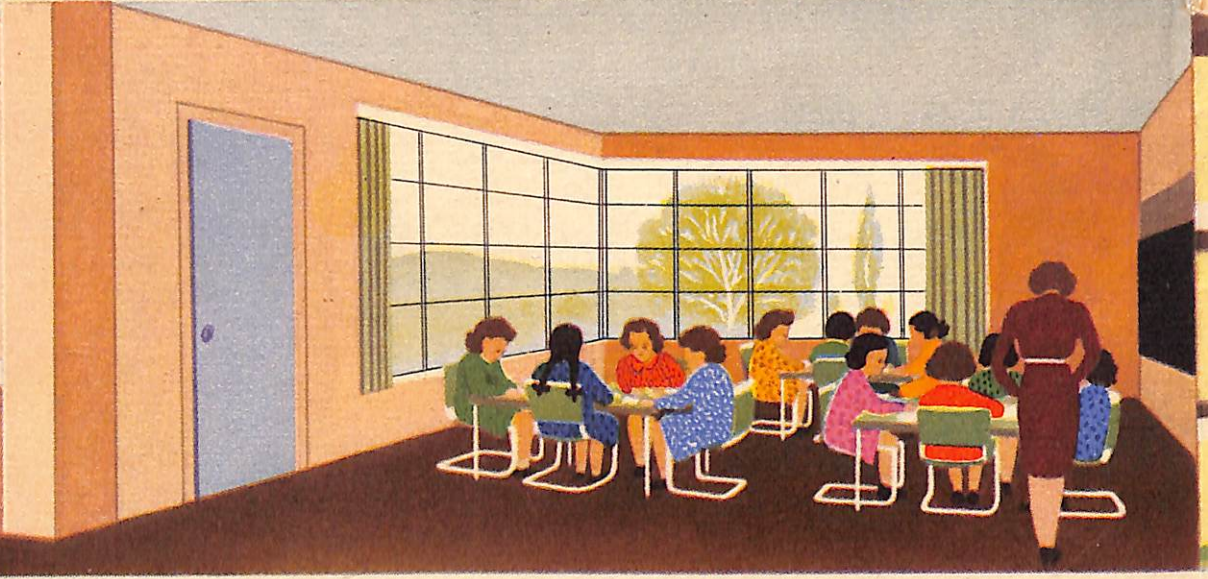
NATIVE
BUSH

Courses in AGRICULTURE and HORTICULTURE under qualified instructors will be provided for senior girls wishing to study these subjects. All the girls, but especially those who live in the town, will benefit by their contact with the life of the country. The farm and gardens will also supply the boarding house with fresh food.



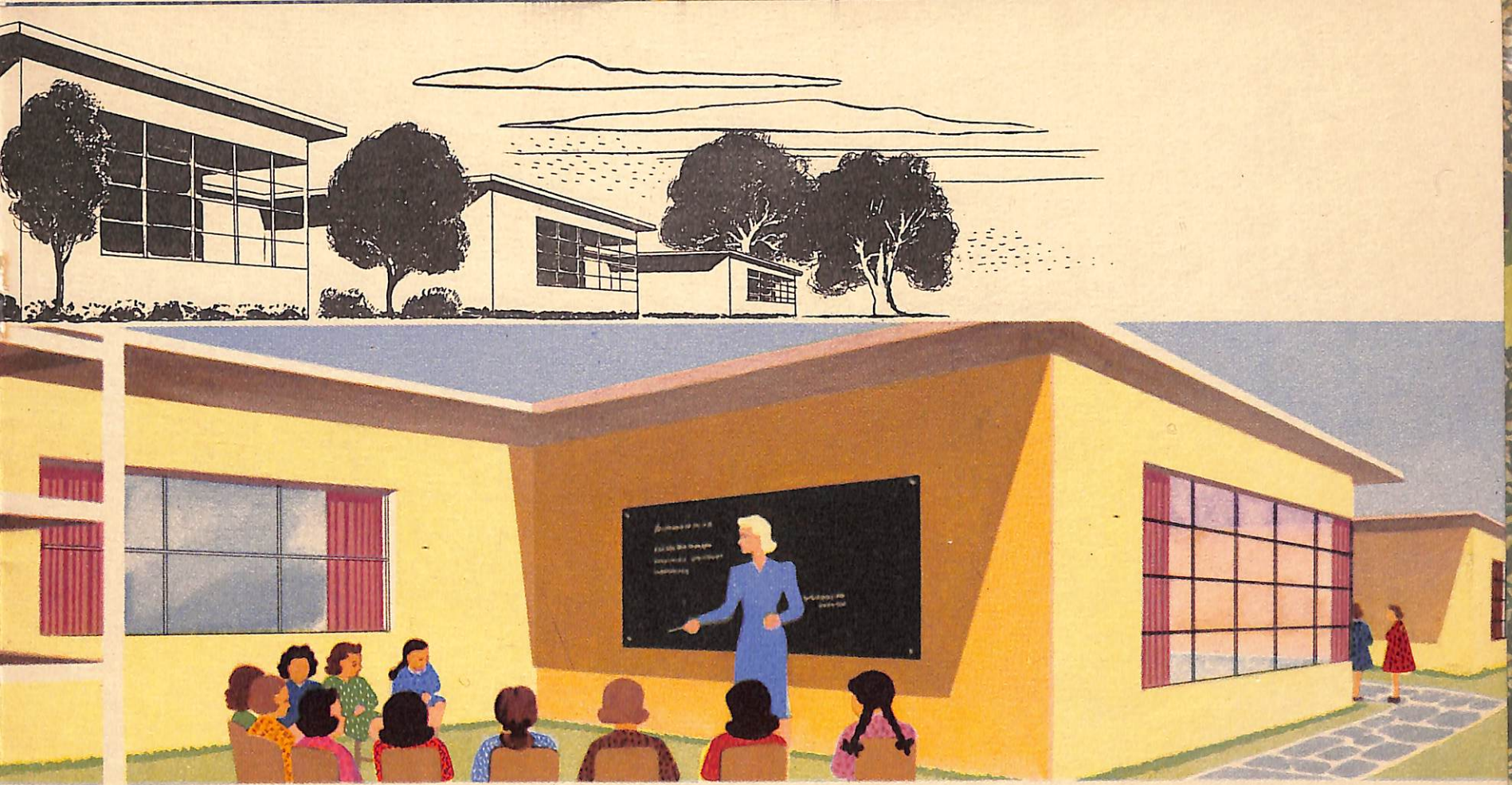


CRAFT - ROOM



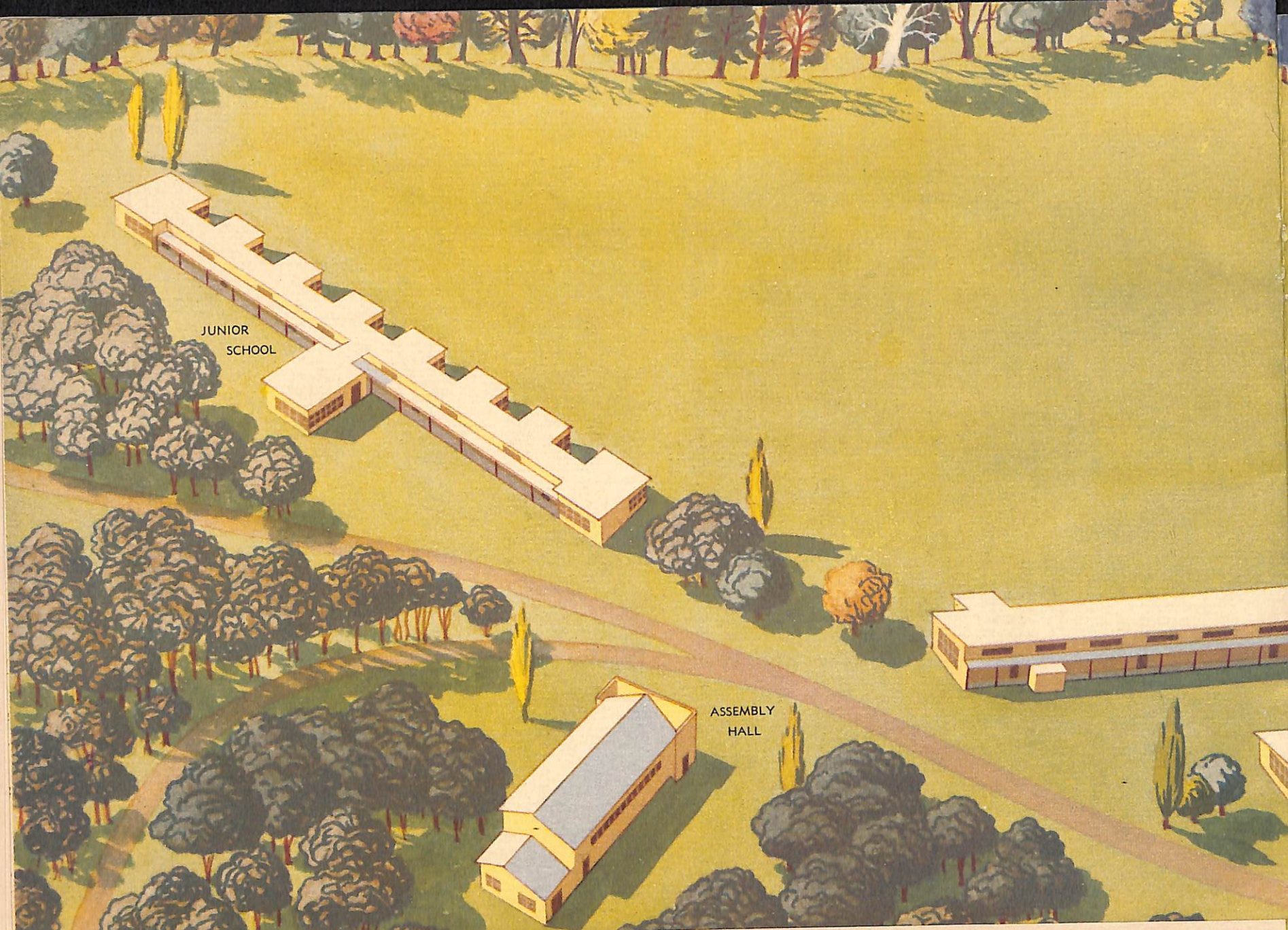
CLASS ROOM

Each class in the JUNIOR SCHOOL will be a self-contained unit, with classroom, craft room, open-air classroom and cloakroom. As in the Junior School at Hawthorn, the children will spend a certain time each day working on an assignment system.



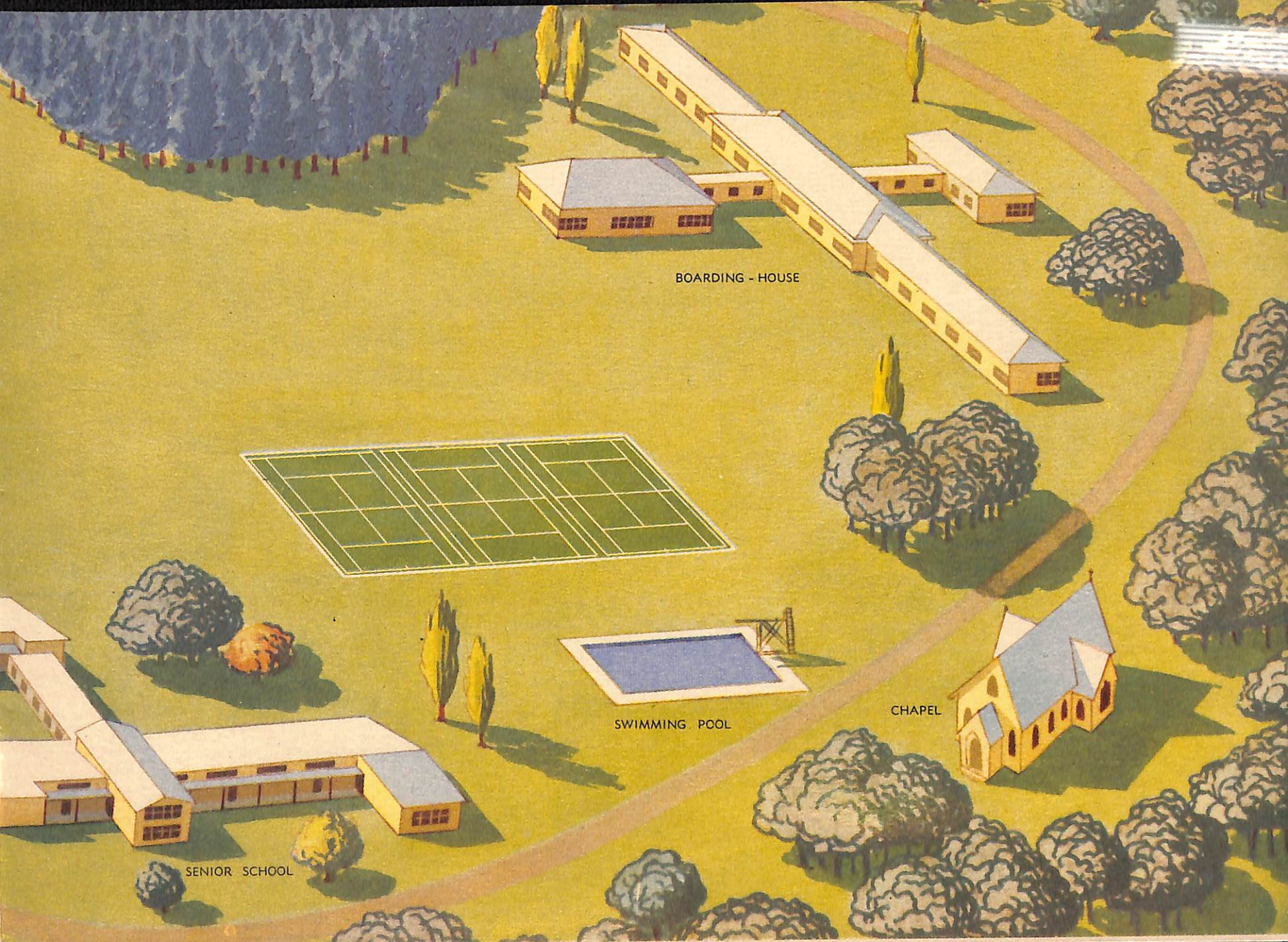
OPEN AIR CLASS ROOM

Thus each child has an opportunity to improve in her weaker subjects, and those who learn and work more quickly have the satisfaction of going on to other interesting work. The Juniors will have their own hall for assembly, music and play-acting.



JUNIOR
SCHOOL

ASSEMBLY
HALL

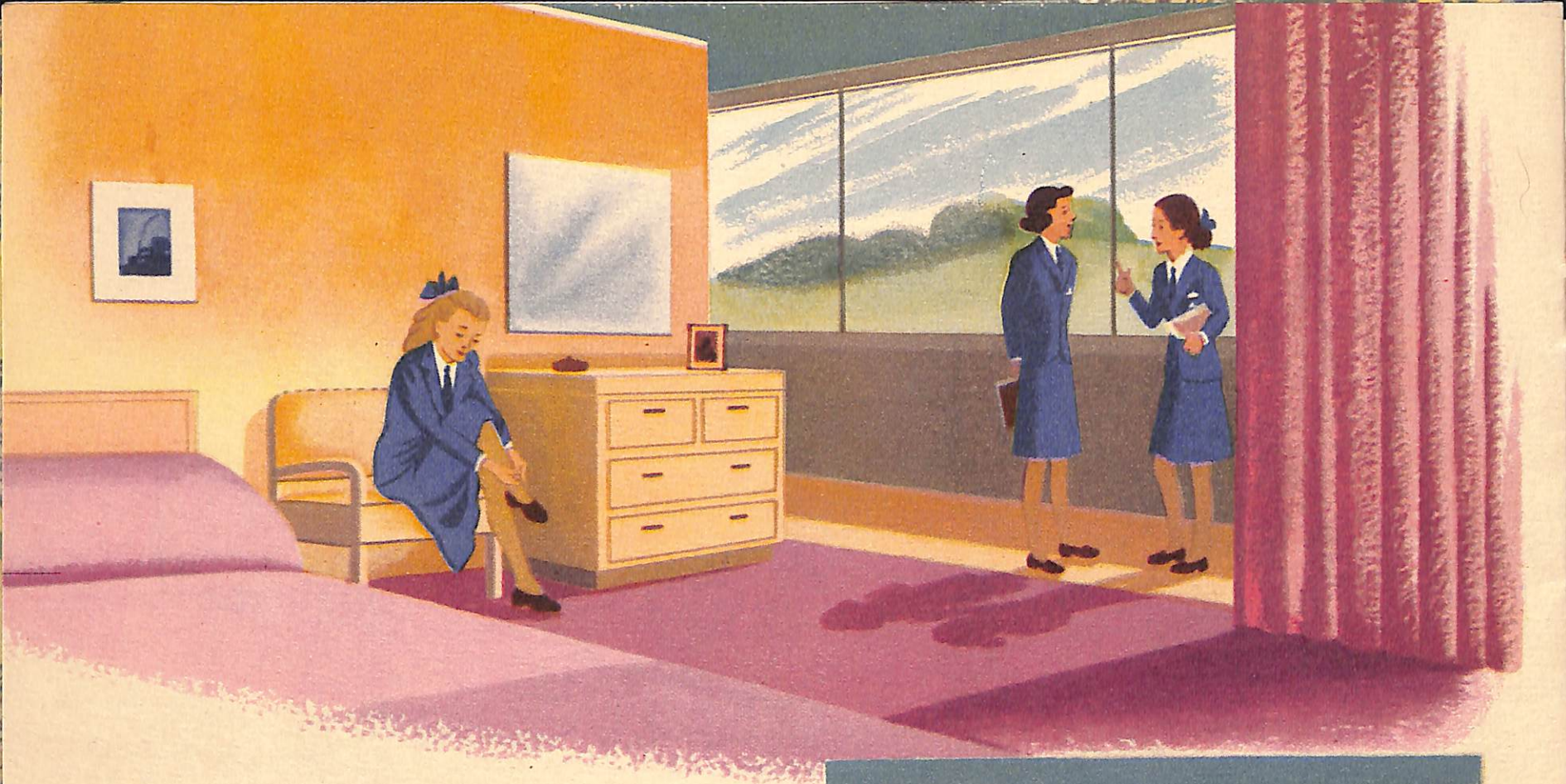


BOARDING - HOUSE

SWIMMING POOL

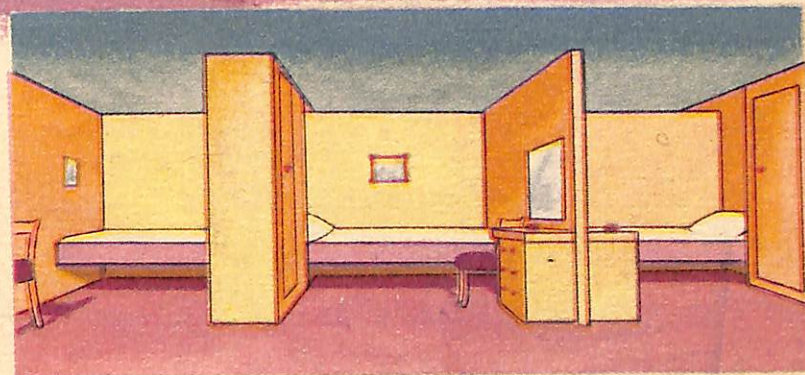
CHAPEL

SENIOR SCHOOL



There will be two boarding houses, each accommodating 36 girls, with a common dining-room and hospital, but separate sitting rooms.

Each senior boarder will have an individual open-air cubicle. The younger girls will sleep in bedrooms designed for four occupants.



WILL YOU HELP TO BUILD THIS MEMORIAL?

Will you help to build this Memorial? The plans have been completed and approved, and it is hoped to commence the building within the next few months. We have nearly enough money in hand to start the Junior School, for which many children are already enrolled, but THE APPEAL COMMITTEE STILL NEEDS £50 000

If everyone who sees this brochure would give something, we should have a school of which Australia could be proud, and if those who are in a position to do so would give generously, we could bring from England children who were orphaned by the war and care for them and educate them with our own children to become an asset to Australia and the British Empire.

As an act of thanksgiving for your own freedom, or in memory of someone you hold dear, you might like to present a section of the school such as the Chapel, the hospital or one of the laboratories or the equipment for some section.

Your donations will be REBATABLE FROM PERSONAL EXERTION INCOME and DEDUCTABLE FROM COMPANY PROFITS under the Income Tax Assessment Act.

Will you please assist us by filling in a Donation Form and sending it to—

The Secretary, Tintern Appeal Committee Tintern C.E.G.G. School, Glenferrie Road, Hawthorn Vic.

The Secretary
Tintern Appeal Committee
Tintern C.E.G.G. School,
Glenferrie Road,
Hawthorn, Vic.

Dear Madam,

I enclose herewith.....for £.....

** as gift.*

** as interest free loan for.....years.*



.....
.....
.....

The Secretary
Tintern Appeal Committee
Tintern C.E.G.G. School
Glenferrie Road
Hawthorn

Dear Madam,

I enclose herewith

for the sum of £.....

as gift

* to the

as interest free loan for years.

Tintern Memorial School Appeal.

.....

* Please indicate the nature of your donation.