

## **Appendix 4**

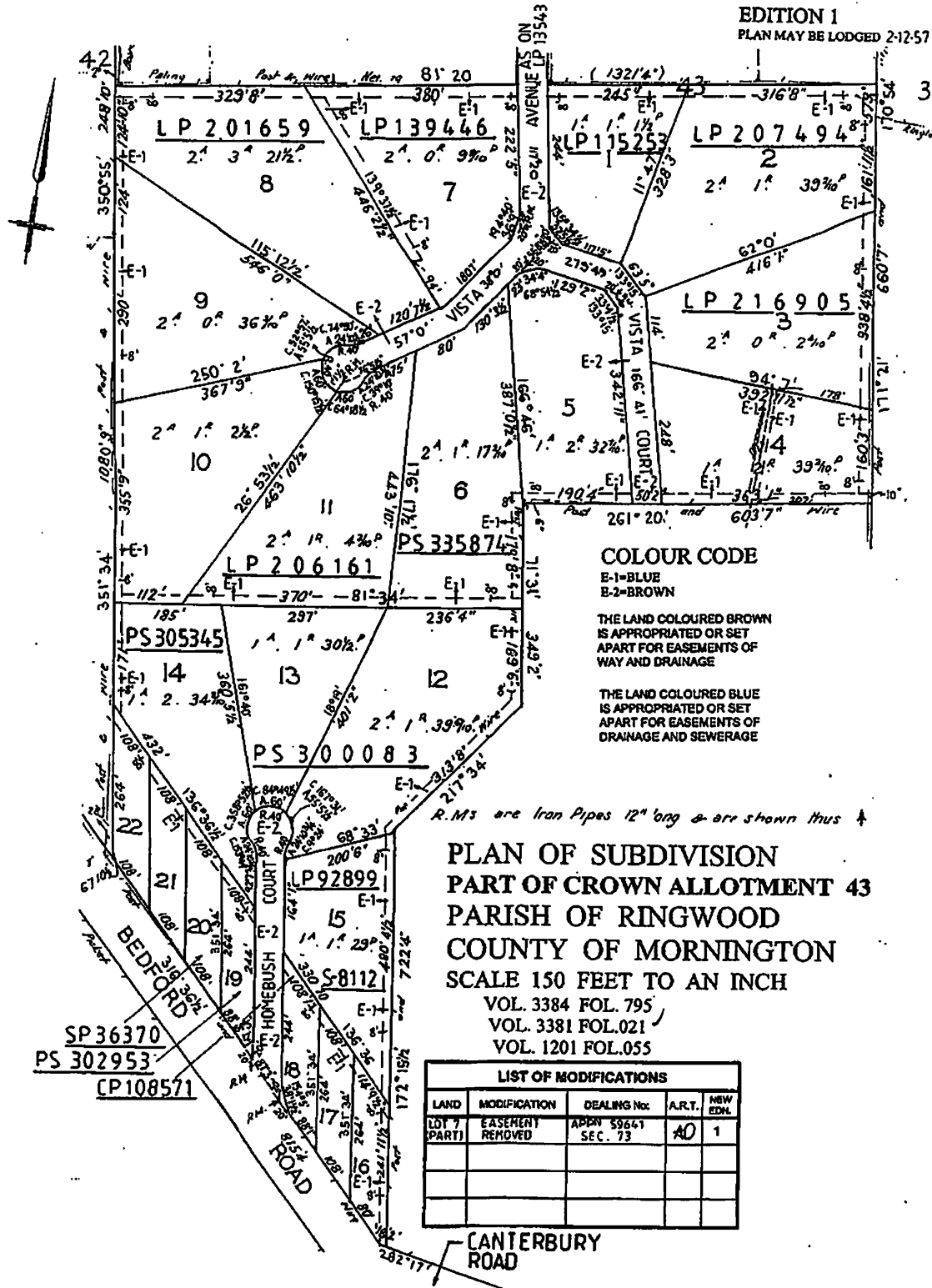
### **Plan of Subdivision No. 41463**

#### **The “Reaghill” Subdivision**

Delivered by LANDATA® Land Registry timestamp 13/01/2005 14:33 Page 1 of 1  
 © State of Victoria. This publication is copyright. No part may be reproduced by any process except in accordance with the provisions of the Copyright Act or pursuant to a written agreement. The information is only valid at the time and in the form obtained from the LANDATA® System. The State of Victoria accepts no responsibility for any subsequent release, publication or reproduction of the information.

**LP 41463**

EDITION 1  
 PLAN MAY BE LODGED 2-12-57



**COLOUR CODE**  
 E-1-BLUE  
 E-2-BROWN

THE LAND COLOURED BROWN IS APPROPRIATED OR SET APART FOR EASEMENTS OF WAY AND DRAINAGE

THE LAND COLOURED BLUE IS APPROPRIATED OR SET APART FOR EASEMENTS OF DRAINAGE AND SEWERAGE

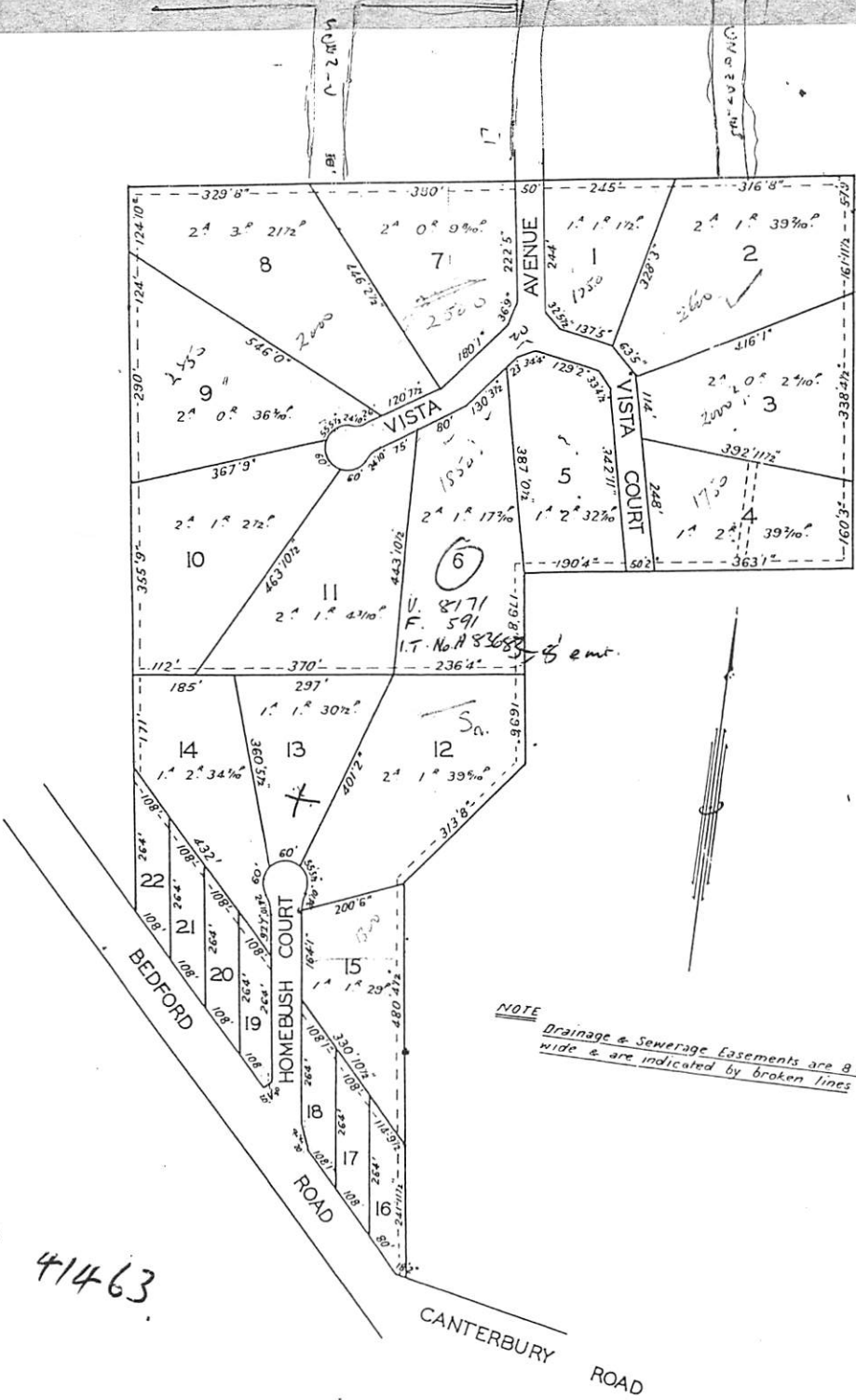
R.M.s are Iron Pipes 12" org & are shown thus &

**PLAN OF SUBDIVISION**  
**PART OF CROWN ALLOTMENT 43**  
**PARISH OF RINGWOOD**  
**COUNTY OF MORNINGTON**  
 SCALE 150 FEET TO AN INCH  
 VOL. 3384 FOL. 795  
 VOL. 3381 FOL. 021  
 VOL. 1201 FOL. 055

LIST OF MODIFICATIONS				
LAND	MODIFICATION	DEALING No.	A.R.T.	NEW EDM.
LOT 7 (PART)	EASEMENT REMOVED	APPN 59661 SEC. 73	AD	1

SS

ALEXANDRIA RD



NOTE  
 Drainage & Sewerage Easements are 8 feet  
 wide & are indicated by broken lines

LP 41463

*[Handwritten signature]*

