

Historical Campus

The oldest Technical School campus in Australia boasts many architectural gems. From inception the School of Mines (SMB) buildings have either been reused, built, removed or upgraded. The architectural development of the campus reflects the changing requirements of the institutions new modes of living and learning. The Lydiard Street campus was added to the Victorian Heritage Register in 1978.

Former Ballarat Circuit Court

The first Ballarat Circuit Court built in 1856 in Lydiard St was abandoned in 1868 due to subsidence and along with a liberal concession of land was made available to the School in April 1870. The Courier reported "The old Court House was 'putting on a new dress' in preparation for the new role it was to play, not only in Ballarat, but in the Colony." This building was demolished in 1912 to make way for a new Technical Art School building.

Materia Medica Garden

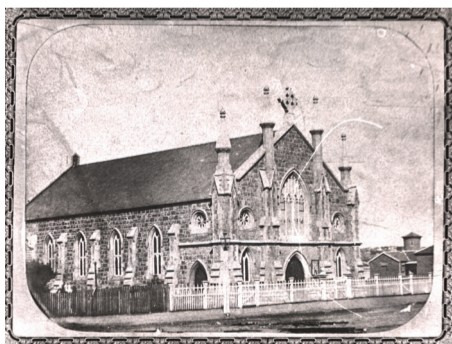


SMB students and staff in the Material Medica Gardens, c1897. Today large scale remnants of the gardens make a pleasing green space in the centre of the campus.

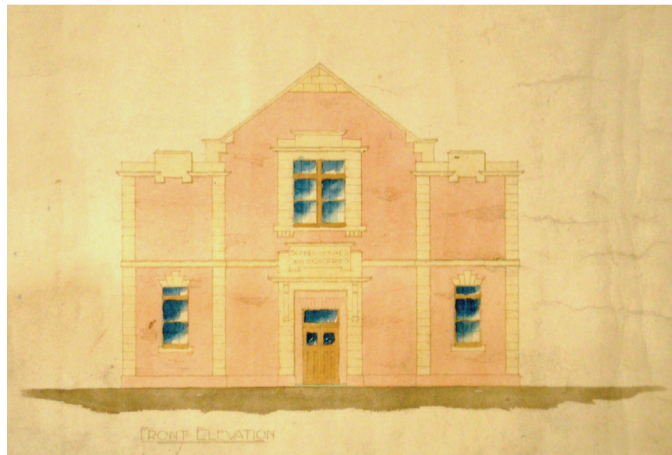


SMB Gardens

Former Wesley Church



Picture above: Former Wesley Church
Picture right: New façade for the Former Wesley Church. (Gift of C. Grigsby)



As SMB grew in stature and reputation new buildings were required to accommodate growing student numbers. In 1883 the School started negotiations to buy the former Wesleyan Church for £2000. Built in 1856 the last service in the Church was conducted in December 1884.

Former Ballarat Gaol

Construction of the Ballarat Gaol started in 1857 and was completed in 1862. One hundred years later it was closed, and demolished in 1865 to allow Ballarat School of Mines expansion. Between 1972 and 1974 the gates and wall (built from locally quarried basalt bricks) were restored and in 1981 the SMB Amenities building was opened. The former Warden's and Governor's Residences are still standing.

The Ballarat Technical Art School

Opening in 1915, the Ballarat Technical Art School was built on the site of the former Ballarat Court House from plans drawn by the Art School Principal, Herbert H. Smith, at a cost of 10,000 pounds.



Ballarat Technical Art School

Old Chemistry Building

The 'Old Chemistry Building', erected in 1876, was the first custom built SMB Chemical Laboratory erected in 1876. By 1880 it housed a metallurgy laboratory and a new assaying laboratory. By 1912 further works allowed for assaying, balances, furnaces and a junior and senior Chemistry classroom.

Former Ballarat Supreme Court

Erected in 1863 this building was abandoned in the early 1940s. Like the previous Court House it was handed over to SMB where trade classes were taught. It is currently used for Performing Arts.

Old Brewery Complex Site

Originally built by Brewer, William Tulloch, the Ballarat Brewery was sold to Carlton and United Breweries in 1958. The neighbouring M.B. John Brass Foundry was acquired around 1957 with buildings used for trade classes in moulding and boiler making. By 1965 the M.B. John Machine Shop was in use for Panel Beating and Motor Mechanics classes. These buildings were demolished in 1964, and the bulk of the Brewery in c1994. The two sites were developed into the Brewery Complex which was opened in 1997.

Building and construction training centre

The construction of the Building and Construction Training Centre (BCTC) marks the beginning a groundbreaking facility applying environmentally sustainable practices to building construction. Constructed between 2005 and 2007. It houses trade classes in Bricklaying, Building & Construction, Furniture Making, Painting and Decorating, Carpentry & Joinery, Building Design & Drafting, Plumbing and Electrical Programs.