

# Revered Engineers



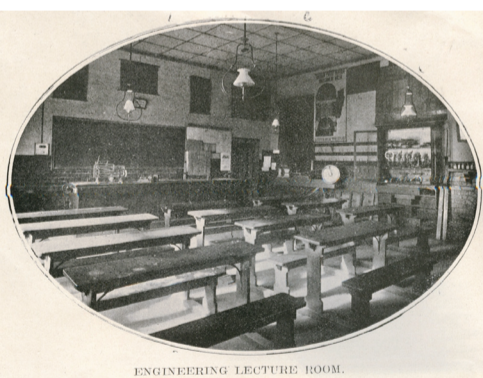
Students studying and using 'surveying' equipment at SMB.

**The Ballarat School of Mines (SMB) had developed a world wide reputation by the early 1900s, with graduates employed around the globe. Often obtaining positions of responsibility 'old boys' soon appeared to be in opening or controlling the World's great mines.**

The first Engineering students at SMB studied in the former Ballarat Court House. During the first 18 months instruction in Surveying and Engineering classes, 13 students attended. Early subjects were Mechanical Drawing (4), Survey Drawing (10), Mine Boundaries (7), Euclid's Elements (10), Trigonometry and Logarithms (13) and Algebra (13). In **1872** the first Metallurgy laboratory opened, described as "The best metallurgical laboratory in the Colonies". In the following year a new chemistry laboratory was erected.



SMB campus, c1930.  
The gauge tower sits below the laboratory chimney.



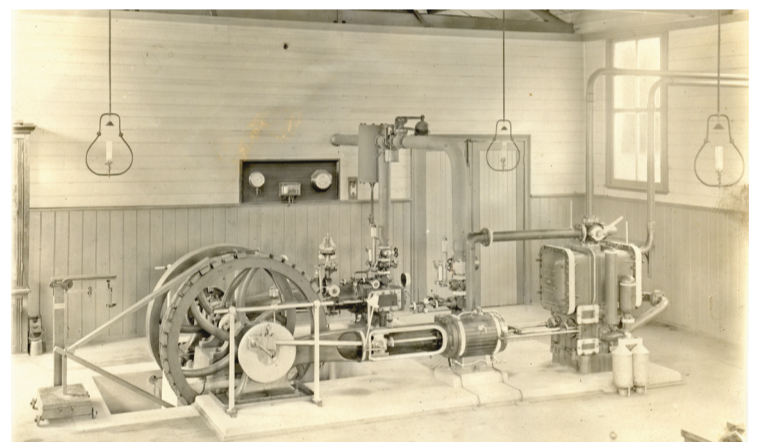
ENGINEERING LECTURE ROOM.  
SMB Engineering Lecture Room, c1911

The **1888** scholastic year was divided into four terms, each of ten weeks duration.

In **1890**, five trainees were indentured for three years, entitling them to receive the first 'Certificate of Associateship of The School of Mines, Ballarat'.

Renowned Ballarat architect and SMB Councillor Henry R. Caselli designed a Gauge Test Tower for SMB in **1880**. Along with its prime function it included a meteorological station, with observations recorded daily.

For the next ten years, student attendances rose dramatically. In **1897**, in response to an unprecedented increase in demand for space, the Chemistry and Metallurgy laboratories were enlarged, with sixty additional benches in the Chemistry laboratory, four new wind furnaces, six new muffle furnaces and a second weighing room. The **Engineering Department** provided lectures and practical work in Dynamics and Heat, Applied Mechanics, Land Surveying, Mine Surveying and Mechanics Applied to Mining and Engine Driving. A model mine was used for underground surveying and a special chlorination plant for the extraction of gold.



SMB's Davey Paxmen Model Steam Engine

In **1899** the Government financed a new building in Lydiard Street costing more than £6,000. The building, known as 'The New Classrooms', housed the Council Room, office, Chemistry and Mineralogical laboratories as well as seven lecture rooms.

During **1932**, 66 diploma students were in attendance with 700-800 attending yearly. Following the introduction of the Commonwealth Reconstruction Training Scheme ex-servicemen also completed courses, and during the **1950s** overseas students at SMB swelled from all corners of the globe. Following the historic and successful development of Engineering at the School of Mines, a Bachelor of Engineering was introduced in **1974** at the new tertiary division of the School, the Ballarat Institute of Advanced Education.