

KEY PLAN



COURTYARD ELEVATION

- 1 REFER TO STRUCTURAL ENGINEER DRAWINGS FOR LOCATION OF WALLS, COLS AND VENTILATION.
- 2 REFER TO STRUCTURAL ENGINEER DRAWINGS FOR FLOOR AND ROOF LEVELS.
- 3 REFER TO STRUCTURAL ENGINEER DRAWINGS FOR WALL AND CEILING FINISHES.
- 4 REFER TO MECHANICAL ENGINEER DRAWINGS FOR LOCATION OF MECHANICAL SERVICES.
- 5 REFER TO CIVIL ENGINEER DRAWINGS FOR LOCATION OF CURBS, KERBS AND DRIVEWAYS.
- 6 REFER TO ELECTRICAL ENGINEER DRAWINGS FOR LOCATION OF ELECTRICAL SERVICES.
- 7 REFER TO MECHANICAL ENGINEER DRAWINGS FOR LOCATION OF MECHANICAL SERVICES.
- 8 REFER TO MECHANICAL ENGINEER DRAWINGS FOR LOCATION OF MECHANICAL SERVICES.
- 9 REFER TO MECHANICAL ENGINEER DRAWINGS FOR LOCATION OF MECHANICAL SERVICES.
- 10 REFER TO MECHANICAL ENGINEER DRAWINGS FOR LOCATION OF MECHANICAL SERVICES.
- 11 REFER TO MECHANICAL ENGINEER DRAWINGS FOR LOCATION OF MECHANICAL SERVICES.
- 12 REFER TO MECHANICAL ENGINEER DRAWINGS FOR LOCATION OF MECHANICAL SERVICES.
- 13 REFER TO MECHANICAL ENGINEER DRAWINGS FOR LOCATION OF MECHANICAL SERVICES.
- 14 REFER TO MECHANICAL ENGINEER DRAWINGS FOR LOCATION OF MECHANICAL SERVICES.
- 15 REFER TO MECHANICAL ENGINEER DRAWINGS FOR LOCATION OF MECHANICAL SERVICES.
- 16 REFER TO MECHANICAL ENGINEER DRAWINGS FOR LOCATION OF MECHANICAL SERVICES.
- 17 REFER TO MECHANICAL ENGINEER DRAWINGS FOR LOCATION OF MECHANICAL SERVICES.
- 18 REFER TO MECHANICAL ENGINEER DRAWINGS FOR LOCATION OF MECHANICAL SERVICES.
- 19 REFER TO MECHANICAL ENGINEER DRAWINGS FOR LOCATION OF MECHANICAL SERVICES.
- 20 REFER TO MECHANICAL ENGINEER DRAWINGS FOR LOCATION OF MECHANICAL SERVICES.
- 21 REFER TO MECHANICAL ENGINEER DRAWINGS FOR LOCATION OF MECHANICAL SERVICES.
- 22 REFER TO MECHANICAL ENGINEER DRAWINGS FOR LOCATION OF MECHANICAL SERVICES.
- 23 REFER TO MECHANICAL ENGINEER DRAWINGS FOR LOCATION OF MECHANICAL SERVICES.
- 24 REFER TO MECHANICAL ENGINEER DRAWINGS FOR LOCATION OF MECHANICAL SERVICES.
- 25 REFER TO MECHANICAL ENGINEER DRAWINGS FOR LOCATION OF MECHANICAL SERVICES.
- 26 REFER TO MECHANICAL ENGINEER DRAWINGS FOR LOCATION OF MECHANICAL SERVICES.
- 27 REFER TO MECHANICAL ENGINEER DRAWINGS FOR LOCATION OF MECHANICAL SERVICES.
- 28 REFER TO MECHANICAL ENGINEER DRAWINGS FOR LOCATION OF MECHANICAL SERVICES.
- 29 REFER TO MECHANICAL ENGINEER DRAWINGS FOR LOCATION OF MECHANICAL SERVICES.
- 30 REFER TO MECHANICAL ENGINEER DRAWINGS FOR LOCATION OF MECHANICAL SERVICES.
- 31 REFER TO MECHANICAL ENGINEER DRAWINGS FOR LOCATION OF MECHANICAL SERVICES.
- 32 REFER TO MECHANICAL ENGINEER DRAWINGS FOR LOCATION OF MECHANICAL SERVICES.
- 33 REFER TO MECHANICAL ENGINEER DRAWINGS FOR LOCATION OF MECHANICAL SERVICES.
- 34 REFER TO MECHANICAL ENGINEER DRAWINGS FOR LOCATION OF MECHANICAL SERVICES.
- 35 REFER TO MECHANICAL ENGINEER DRAWINGS FOR LOCATION OF MECHANICAL SERVICES.
- 36 REFER TO MECHANICAL ENGINEER DRAWINGS FOR LOCATION OF MECHANICAL SERVICES.
- 37 REFER TO MECHANICAL ENGINEER DRAWINGS FOR LOCATION OF MECHANICAL SERVICES.
- 38 REFER TO MECHANICAL ENGINEER DRAWINGS FOR LOCATION OF MECHANICAL SERVICES.
- 39 REFER TO MECHANICAL ENGINEER DRAWINGS FOR LOCATION OF MECHANICAL SERVICES.
- 40 REFER TO MECHANICAL ENGINEER DRAWINGS FOR LOCATION OF MECHANICAL SERVICES.
- 41 REFER TO MECHANICAL ENGINEER DRAWINGS FOR LOCATION OF MECHANICAL SERVICES.
- 42 REFER TO MECHANICAL ENGINEER DRAWINGS FOR LOCATION OF MECHANICAL SERVICES.
- 43 REFER TO MECHANICAL ENGINEER DRAWINGS FOR LOCATION OF MECHANICAL SERVICES.
- 44 REFER TO MECHANICAL ENGINEER DRAWINGS FOR LOCATION OF MECHANICAL SERVICES.
- 45 REFER TO MECHANICAL ENGINEER DRAWINGS FOR LOCATION OF MECHANICAL SERVICES.
- 46 REFER TO MECHANICAL ENGINEER DRAWINGS FOR LOCATION OF MECHANICAL SERVICES.
- 47 REFER TO MECHANICAL ENGINEER DRAWINGS FOR LOCATION OF MECHANICAL SERVICES.
- 48 REFER TO MECHANICAL ENGINEER DRAWINGS FOR LOCATION OF MECHANICAL SERVICES.
- 49 REFER TO MECHANICAL ENGINEER DRAWINGS FOR LOCATION OF MECHANICAL SERVICES.
- 50 REFER TO MECHANICAL ENGINEER DRAWINGS FOR LOCATION OF MECHANICAL SERVICES.
- 51 REFER TO MECHANICAL ENGINEER DRAWINGS FOR LOCATION OF MECHANICAL SERVICES.
- 52 REFER TO MECHANICAL ENGINEER DRAWINGS FOR LOCATION OF MECHANICAL SERVICES.
- 53 REFER TO MECHANICAL ENGINEER DRAWINGS FOR LOCATION OF MECHANICAL SERVICES.
- 54 REFER TO MECHANICAL ENGINEER DRAWINGS FOR LOCATION OF MECHANICAL SERVICES.
- 55 REFER TO MECHANICAL ENGINEER DRAWINGS FOR LOCATION OF MECHANICAL SERVICES.
- 56 REFER TO MECHANICAL ENGINEER DRAWINGS FOR LOCATION OF MECHANICAL SERVICES.
- 57 REFER TO MECHANICAL ENGINEER DRAWINGS FOR LOCATION OF MECHANICAL SERVICES.
- 58 REFER TO MECHANICAL ENGINEER DRAWINGS FOR LOCATION OF MECHANICAL SERVICES.
- 59 REFER TO MECHANICAL ENGINEER DRAWINGS FOR LOCATION OF MECHANICAL SERVICES.
- 60 REFER TO MECHANICAL ENGINEER DRAWINGS FOR LOCATION OF MECHANICAL SERVICES.
- 61 REFER TO MECHANICAL ENGINEER DRAWINGS FOR LOCATION OF MECHANICAL SERVICES.
- 62 REFER TO MECHANICAL ENGINEER DRAWINGS FOR LOCATION OF MECHANICAL SERVICES.
- 63 REFER TO MECHANICAL ENGINEER DRAWINGS FOR LOCATION OF MECHANICAL SERVICES.
- 64 REFER TO MECHANICAL ENGINEER DRAWINGS FOR LOCATION OF MECHANICAL SERVICES.
- 65 REFER TO MECHANICAL ENGINEER DRAWINGS FOR LOCATION OF MECHANICAL SERVICES.
- 66 REFER TO MECHANICAL ENGINEER DRAWINGS FOR LOCATION OF MECHANICAL SERVICES.
- 67 REFER TO MECHANICAL ENGINEER DRAWINGS FOR LOCATION OF MECHANICAL SERVICES.
- 68 REFER TO MECHANICAL ENGINEER DRAWINGS FOR LOCATION OF MECHANICAL SERVICES.
- 69 REFER TO MECHANICAL ENGINEER DRAWINGS FOR LOCATION OF MECHANICAL SERVICES.
- 70 REFER TO MECHANICAL ENGINEER DRAWINGS FOR LOCATION OF MECHANICAL SERVICES.
- 71 REFER TO MECHANICAL ENGINEER DRAWINGS FOR LOCATION OF MECHANICAL SERVICES.
- 72 REFER TO MECHANICAL ENGINEER DRAWINGS FOR LOCATION OF MECHANICAL SERVICES.
- 73 REFER TO MECHANICAL ENGINEER DRAWINGS FOR LOCATION OF MECHANICAL SERVICES.
- 74 REFER TO MECHANICAL ENGINEER DRAWINGS FOR LOCATION OF MECHANICAL SERVICES.
- 75 REFER TO MECHANICAL ENGINEER DRAWINGS FOR LOCATION OF MECHANICAL SERVICES.
- 76 REFER TO MECHANICAL ENGINEER DRAWINGS FOR LOCATION OF MECHANICAL SERVICES.
- 77 REFER TO MECHANICAL ENGINEER DRAWINGS FOR LOCATION OF MECHANICAL SERVICES.
- 78 REFER TO MECHANICAL ENGINEER DRAWINGS FOR LOCATION OF MECHANICAL SERVICES.
- 79 REFER TO MECHANICAL ENGINEER DRAWINGS FOR LOCATION OF MECHANICAL SERVICES.
- 80 REFER TO MECHANICAL ENGINEER DRAWINGS FOR LOCATION OF MECHANICAL SERVICES.
- 81 REFER TO MECHANICAL ENGINEER DRAWINGS FOR LOCATION OF MECHANICAL SERVICES.
- 82 REFER TO MECHANICAL ENGINEER DRAWINGS FOR LOCATION OF MECHANICAL SERVICES.
- 83 REFER TO MECHANICAL ENGINEER DRAWINGS FOR LOCATION OF MECHANICAL SERVICES.
- 84 REFER TO MECHANICAL ENGINEER DRAWINGS FOR LOCATION OF MECHANICAL SERVICES.
- 85 REFER TO MECHANICAL ENGINEER DRAWINGS FOR LOCATION OF MECHANICAL SERVICES.
- 86 REFER TO MECHANICAL ENGINEER DRAWINGS FOR LOCATION OF MECHANICAL SERVICES.
- 87 REFER TO MECHANICAL ENGINEER DRAWINGS FOR LOCATION OF MECHANICAL SERVICES.
- 88 REFER TO MECHANICAL ENGINEER DRAWINGS FOR LOCATION OF MECHANICAL SERVICES.
- 89 REFER TO MECHANICAL ENGINEER DRAWINGS FOR LOCATION OF MECHANICAL SERVICES.
- 90 REFER TO MECHANICAL ENGINEER DRAWINGS FOR LOCATION OF MECHANICAL SERVICES.
- 91 REFER TO MECHANICAL ENGINEER DRAWINGS FOR LOCATION OF MECHANICAL SERVICES.
- 92 REFER TO MECHANICAL ENGINEER DRAWINGS FOR LOCATION OF MECHANICAL SERVICES.
- 93 REFER TO MECHANICAL ENGINEER DRAWINGS FOR LOCATION OF MECHANICAL SERVICES.
- 94 REFER TO MECHANICAL ENGINEER DRAWINGS FOR LOCATION OF MECHANICAL SERVICES.
- 95 REFER TO MECHANICAL ENGINEER DRAWINGS FOR LOCATION OF MECHANICAL SERVICES.
- 96 REFER TO MECHANICAL ENGINEER DRAWINGS FOR LOCATION OF MECHANICAL SERVICES.
- 97 REFER TO MECHANICAL ENGINEER DRAWINGS FOR LOCATION OF MECHANICAL SERVICES.
- 98 REFER TO MECHANICAL ENGINEER DRAWINGS FOR LOCATION OF MECHANICAL SERVICES.
- 99 REFER TO MECHANICAL ENGINEER DRAWINGS FOR LOCATION OF MECHANICAL SERVICES.
- 100 REFER TO MECHANICAL ENGINEER DRAWINGS FOR LOCATION OF MECHANICAL SERVICES.

|     |             |      |               |     |  |
|-----|-------------|------|---------------|-----|--|
| CPT | CARP        | PT   | PANORAMA TILE | GFT |  |
| QT  | QUARRY TILE | GR   | GRANITE       | CF  |  |
| VW  | VENEER      | MS   | MARBLE        | CP  |  |
| WT  | WOOD        | MS   | MARBLE        | MAT |  |
| CS  | CONCRETE    | TMA  | TILE          |     |  |
| CMP | CONCRETE    | TMA2 | TILE          |     |  |
| EX  | EXTERIOR    | MS   | MARBLE        |     |  |
| CP  | CONCRETE    | SP   | STONE         |     |  |

CONSULTANTS

- Hasset Consulting Engineers**  
Building Services  
616 St Kilda Road, Melbourne 3004  
Telephone: (03)9610 4888 Fax no.: (03)9610 4888
- Connell Wagner**  
Structural and Civil Engineers  
60 Albert Road, South Melbourne 3205  
Telephone: (03)9697 6333 Fax no.: (03)9697 6333
- Donald Carl Watts Corke**  
Quantity Surveyor  
126 Wellington Parade, East Melbourne  
Telephone: (03)9417 4567 Fax no.: (03)9417 4567
- Philip Chan & Associates**  
Building Certification  
Level 5, 106 Lonsdale Street, Melbourne  
Telephone: (03)9562 2200 Fax no.: (03)9562 2200
- KLM Garner P/L**  
Landscape Architect  
61 - 63 Camberwell Rd, Hawthorn East.  
Telephone: (03)9882 7766 Fax no.: (03)9882 7766
- Allan Lovell**  
Conservation Architect  
Lvl 1, 35 Lt. Bourke St, Melbourne 3000  
Telephone: (03)9662 3344 Fax no.: (03)9662 3344
- Watson Moss Growth**  
Acoustic Engineering  
Suite 7, 696 High St, Kew 3102  
Telephone: (03)9859 9447 Fax no.: (03)9859 9447
- Meinhardt Pty Ltd**  
Fire Engineering  
601 St Kilda Road, Melbourne 3004  
Telephone: (03)9530 1200 Fax no.: (03)9530 1200
- Grogan Richards**  
Hydraulic Engineering  
55 Moor St, Fitzroy 3065  
Telephone: (03)9417 7833 Fax no.: (03)9417 7833

This drawing should be read in conjunction with the contract specifications and drawings. Copyright of this drawing is vested in the Designer. Dimensions are in millimetres. Levels are in meters above sea level. Do not scale off drawings. Use figured dimensions. Check all dimensions on site. Report discrepancies immediately.

**Daryl Jackson Pty Ltd**  
Architects, Interior Designers

35 Lt. Bourke St, Melbourne 3000  
Tel: (03)9662 3622 Fax: (03)9662 5239  
djm@daryljackson.com.au

Project:  
**UNIVERSITY & CITY OF BARRACLOUGH**  
**SCHOOL OF VISUAL & PERFORMING ARTS & ALFRED DEAKIN PARK**

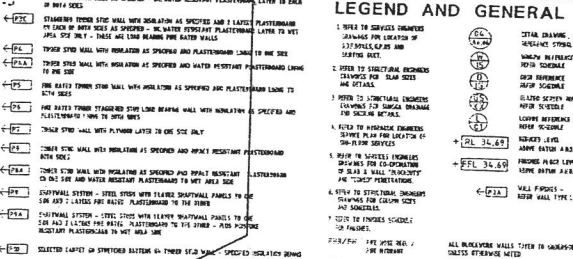
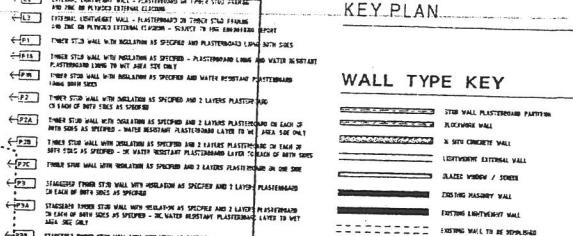
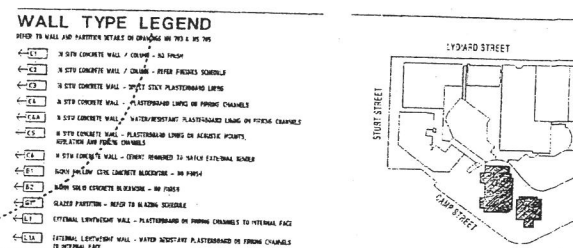
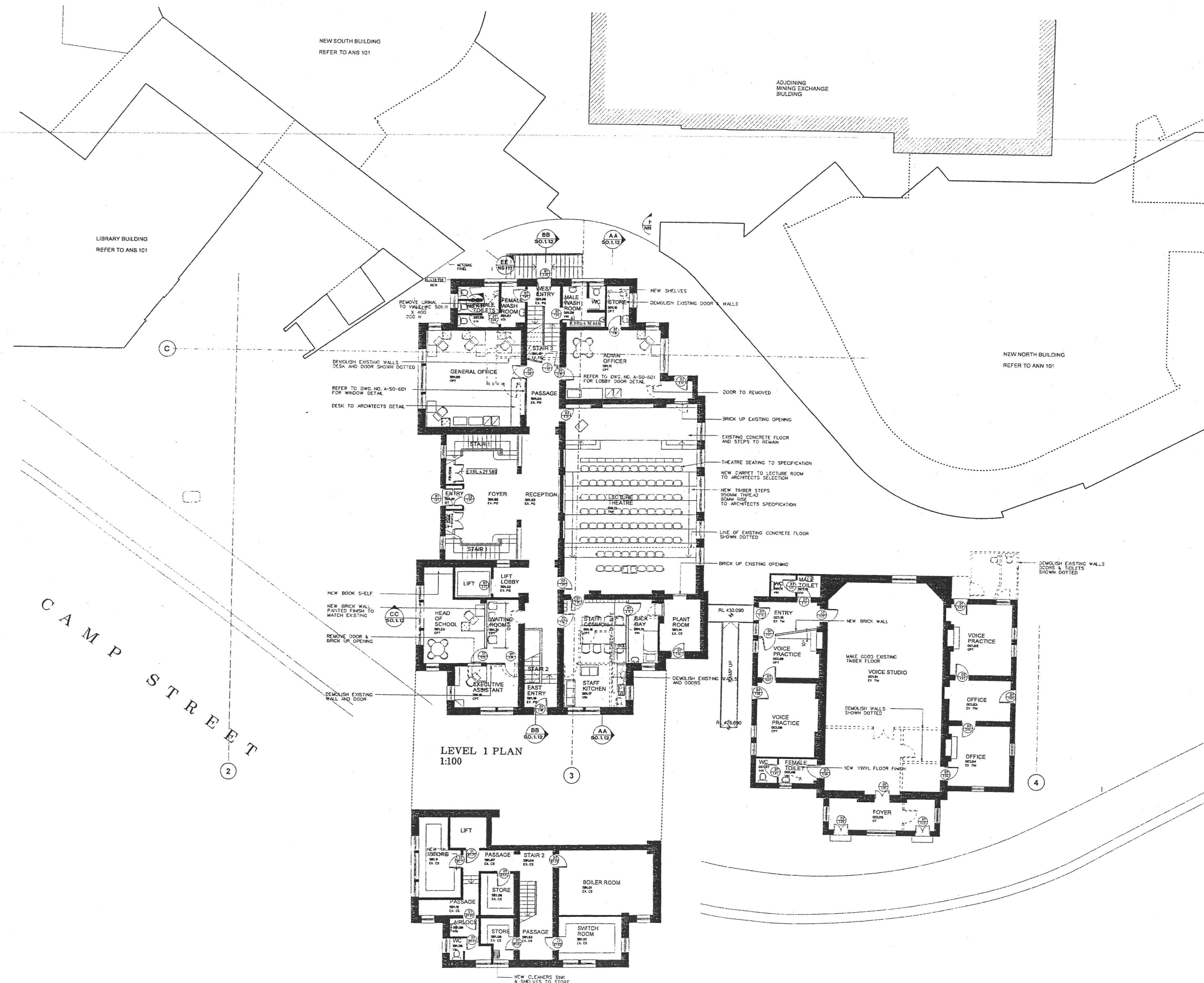
Scales: 1:100 Plot Date: 02/09  
Dwg Date: NOV

Drawn By: *cc* Checked By: *JJP*

Description:  
POST OFFICE BUILDINGS  
ELEVATIONS

Number: Drawing Number:

FOR CONSTRUCTION



**FLOOR FINISHES**

| Code | Description | Code | Description  | Code | Description |
|------|-------------|------|--------------|------|-------------|
| CPT  | CARPET      | PT   | PARTIAL TILE | GFT  | GRANITE     |
| QT   | QUARTZ      | GR   | GRANITE      | CF   | CONCRETE    |
| VN   | VINYL       | MS   | MARBLE       |      |             |
| WT   | WOOD        | TM   | TERRAZZO     |      |             |
| CS   | CONCRETE    | TM2  | TERRAZZO     |      |             |
| CMP  | CONCRETE    | MS   | MARBLE       |      |             |
| FL   | FLOOR       | MS   | MARBLE       |      |             |
| EX   | EXTERIOR    | MS   | MARBLE       |      |             |
| CP   | CONCRETE    | SP   | SPARSE       |      |             |

- CONSULTANTS**
- Basset Consulting Engineers Building Services  
416 St Kilda Road Melbourne 3004  
Telephone: (03)9518 4888 Fax no: (03)9518 4888
  - Connell Waggoner Structural and Civil Engineers  
60 Albert Road, South Melbourne 3205  
Telephone: (03)9697 8333 Fax no: (03)9697 8333
  - Donald Cant Watts Corke Quantity Surveyor  
126 Wellington Parade, East Melbourne 3  
Telephone: (03)9417 4567 Fax no: (03)9417 4567
  - Philip Choo & Associates Building Certification  
Level 9, 108 Lonsdale Street Melbourne 3  
Telephone: (03)9562 2200 Fax no: (03)9562 2200
  - KLM Gerner P/L Landscape Architect  
61 - 63 Camberwell Rd, Hawthorn East, 31  
Telephone: (03)9882 7766 Fax no: (03)9882 7766
  - Allom Lovell Conservation Architect  
Lvl 1, 35 Lt Bourke St, Melbourne 3000  
Telephone: (03)9662 8344 Fax no: (03)9662 8344
  - Watson Moss Growth Acoustic Engineering  
Suite 7, 699 High St, Kew 3102  
Telephone: (03)9559 9447 Fax no: (03)9559 9447
  - Mainhardt Pty Ltd Fire Engineering  
601 St Kilda Road, Melbourne 3004  
Telephone: (03)9530 1200 Fax no: (03)9530 1200
  - Grogan Richards Hydraulic Engineering  
55 Moor St, Fitzroy 3065  
Telephone: (03)9417 7833 Fax no: (03)9417 7833

This drawing should be read in conjunction with the contract, specifications and drawing. Copyright of this drawing is vested in the Architect. Dimensions are in millimetres. Levels are in r. Do not scale off drawings. Use figured dimensions. Check all dimensions on site. Report discrepancies immediately.

**Daryl Jackson Pty Ltd**  
Architects, Interior Designers  
35 Lt Bourke St, Melbourne 3000  
Tele: (03)9662 3022 Fax: (03)9663 5239  
djm@b@daryljackson.com.au

Project: **UNIVERSITY & CITY OF BAI**  
**SCHOOL OF VISUAL & PERFORMING ARTS & ALFRED DEAKIN PI**

Scales: Plot Date 05-0  
1:100 Dwg Date DEC  
Drawn By: JB KN Checked By:

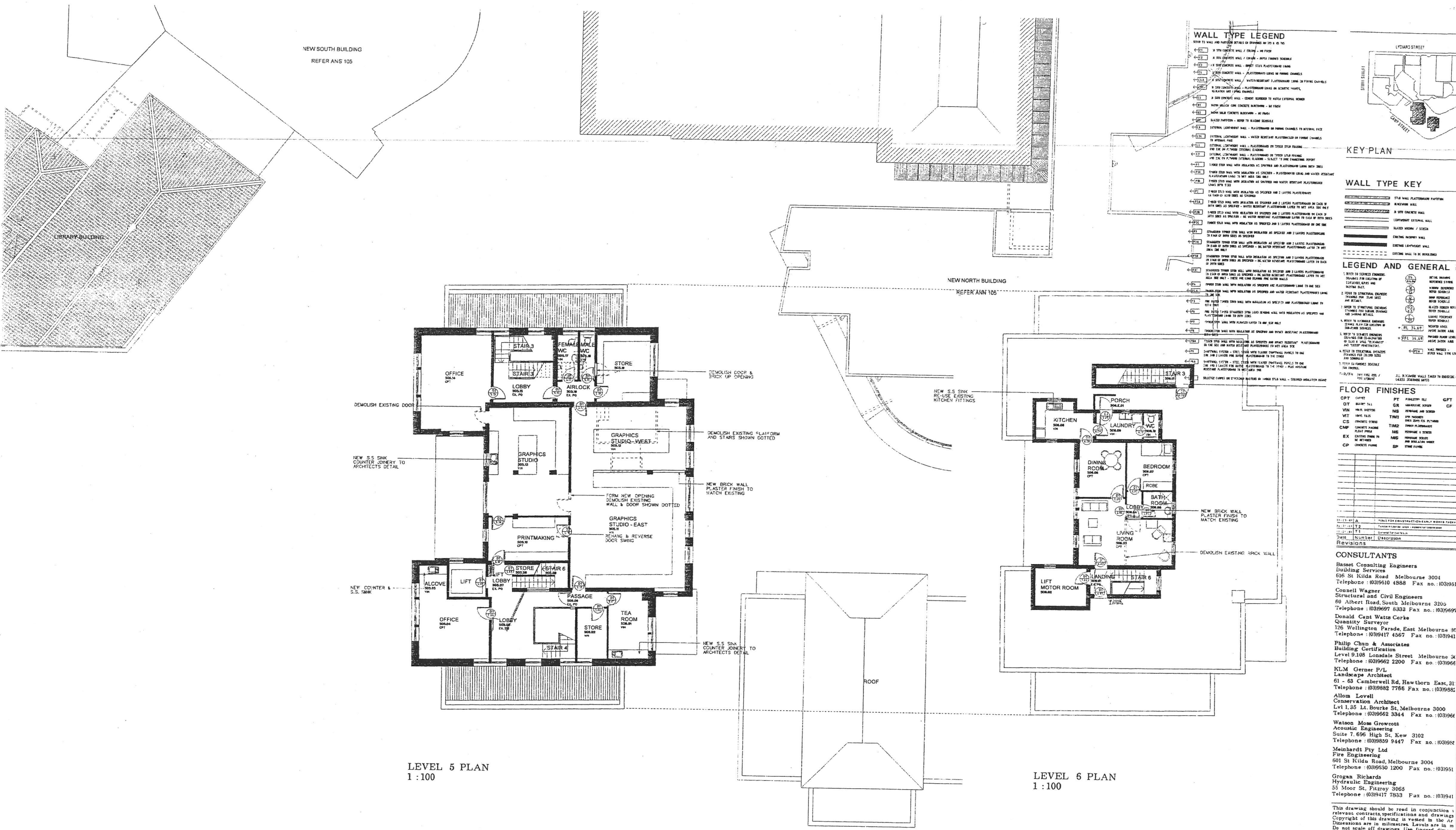
Description: **STATE OFFICES + COURTS LEVEL 1 & B1**











### WALL TYPE LEGEND

REFER TO WALL AND PARTIAL DETAILS OF DRAWINGS BY 1:1 & 1:10

- 1. 100mm CONCRETE WALL / COLUMN - NO FINISH
- 2. 100mm CONCRETE WALL / COLUMN - WITH FINISH
- 3. 100mm CONCRETE WALL / COLUMN - WITH FINISH AND INSULATION
- 4. 100mm CONCRETE WALL / COLUMN - WITH FINISH AND INSULATION AND PLASTERBOARD
- 5. 100mm CONCRETE WALL / COLUMN - WITH FINISH AND INSULATION AND PLASTERBOARD AND FIBRE CHANNELS
- 6. 100mm CONCRETE WALL / COLUMN - WITH FINISH AND INSULATION AND PLASTERBOARD AND FIBRE CHANNELS AND WATER RESISTANT PLASTERBOARD
- 7. 100mm CONCRETE WALL / COLUMN - WITH FINISH AND INSULATION AND PLASTERBOARD AND FIBRE CHANNELS AND WATER RESISTANT PLASTERBOARD AND VAPOR BARRIER
- 8. 100mm CONCRETE WALL / COLUMN - WITH FINISH AND INSULATION AND PLASTERBOARD AND FIBRE CHANNELS AND WATER RESISTANT PLASTERBOARD AND VAPOR BARRIER AND SOUND INSULATION
- 9. 100mm CONCRETE WALL / COLUMN - WITH FINISH AND INSULATION AND PLASTERBOARD AND FIBRE CHANNELS AND WATER RESISTANT PLASTERBOARD AND VAPOR BARRIER AND SOUND INSULATION AND SOUND BARRIER
- 10. 100mm CONCRETE WALL / COLUMN - WITH FINISH AND INSULATION AND PLASTERBOARD AND FIBRE CHANNELS AND WATER RESISTANT PLASTERBOARD AND VAPOR BARRIER AND SOUND INSULATION AND SOUND BARRIER AND SOUND BARRIER
- 11. 100mm CONCRETE WALL / COLUMN - WITH FINISH AND INSULATION AND PLASTERBOARD AND FIBRE CHANNELS AND WATER RESISTANT PLASTERBOARD AND VAPOR BARRIER AND SOUND INSULATION AND SOUND BARRIER AND SOUND BARRIER AND SOUND BARRIER
- 12. 100mm CONCRETE WALL / COLUMN - WITH FINISH AND INSULATION AND PLASTERBOARD AND FIBRE CHANNELS AND WATER RESISTANT PLASTERBOARD AND VAPOR BARRIER AND SOUND INSULATION AND SOUND BARRIER AND SOUND BARRIER AND SOUND BARRIER AND SOUND BARRIER
- 13. 100mm CONCRETE WALL / COLUMN - WITH FINISH AND INSULATION AND PLASTERBOARD AND FIBRE CHANNELS AND WATER RESISTANT PLASTERBOARD AND VAPOR BARRIER AND SOUND INSULATION AND SOUND BARRIER AND SOUND BARRIER AND SOUND BARRIER AND SOUND BARRIER
- 14. 100mm CONCRETE WALL / COLUMN - WITH FINISH AND INSULATION AND PLASTERBOARD AND FIBRE CHANNELS AND WATER RESISTANT PLASTERBOARD AND VAPOR BARRIER AND SOUND INSULATION AND SOUND BARRIER AND SOUND BARRIER AND SOUND BARRIER AND SOUND BARRIER
- 15. 100mm CONCRETE WALL / COLUMN - WITH FINISH AND INSULATION AND PLASTERBOARD AND FIBRE CHANNELS AND WATER RESISTANT PLASTERBOARD AND VAPOR BARRIER AND SOUND INSULATION AND SOUND BARRIER AND SOUND BARRIER AND SOUND BARRIER AND SOUND BARRIER
- 16. 100mm CONCRETE WALL / COLUMN - WITH FINISH AND INSULATION AND PLASTERBOARD AND FIBRE CHANNELS AND WATER RESISTANT PLASTERBOARD AND VAPOR BARRIER AND SOUND INSULATION AND SOUND BARRIER AND SOUND BARRIER AND SOUND BARRIER AND SOUND BARRIER
- 17. 100mm CONCRETE WALL / COLUMN - WITH FINISH AND INSULATION AND PLASTERBOARD AND FIBRE CHANNELS AND WATER RESISTANT PLASTERBOARD AND VAPOR BARRIER AND SOUND INSULATION AND SOUND BARRIER AND SOUND BARRIER AND SOUND BARRIER AND SOUND BARRIER
- 18. 100mm CONCRETE WALL / COLUMN - WITH FINISH AND INSULATION AND PLASTERBOARD AND FIBRE CHANNELS AND WATER RESISTANT PLASTERBOARD AND VAPOR BARRIER AND SOUND INSULATION AND SOUND BARRIER AND SOUND BARRIER AND SOUND BARRIER AND SOUND BARRIER
- 19. 100mm CONCRETE WALL / COLUMN - WITH FINISH AND INSULATION AND PLASTERBOARD AND FIBRE CHANNELS AND WATER RESISTANT PLASTERBOARD AND VAPOR BARRIER AND SOUND INSULATION AND SOUND BARRIER AND SOUND BARRIER AND SOUND BARRIER AND SOUND BARRIER
- 20. 100mm CONCRETE WALL / COLUMN - WITH FINISH AND INSULATION AND PLASTERBOARD AND FIBRE CHANNELS AND WATER RESISTANT PLASTERBOARD AND VAPOR BARRIER AND SOUND INSULATION AND SOUND BARRIER AND SOUND BARRIER AND SOUND BARRIER AND SOUND BARRIER

### KEY PLAN

### WALL TYPE KEY

- 1. 100mm CONCRETE WALL / COLUMN - NO FINISH
- 2. 100mm CONCRETE WALL / COLUMN - WITH FINISH
- 3. 100mm CONCRETE WALL / COLUMN - WITH FINISH AND INSULATION
- 4. 100mm CONCRETE WALL / COLUMN - WITH FINISH AND INSULATION AND PLASTERBOARD
- 5. 100mm CONCRETE WALL / COLUMN - WITH FINISH AND INSULATION AND PLASTERBOARD AND FIBRE CHANNELS
- 6. 100mm CONCRETE WALL / COLUMN - WITH FINISH AND INSULATION AND PLASTERBOARD AND FIBRE CHANNELS AND WATER RESISTANT PLASTERBOARD
- 7. 100mm CONCRETE WALL / COLUMN - WITH FINISH AND INSULATION AND PLASTERBOARD AND FIBRE CHANNELS AND WATER RESISTANT PLASTERBOARD AND VAPOR BARRIER
- 8. 100mm CONCRETE WALL / COLUMN - WITH FINISH AND INSULATION AND PLASTERBOARD AND FIBRE CHANNELS AND WATER RESISTANT PLASTERBOARD AND VAPOR BARRIER AND SOUND INSULATION
- 9. 100mm CONCRETE WALL / COLUMN - WITH FINISH AND INSULATION AND PLASTERBOARD AND FIBRE CHANNELS AND WATER RESISTANT PLASTERBOARD AND VAPOR BARRIER AND SOUND INSULATION AND SOUND BARRIER
- 10. 100mm CONCRETE WALL / COLUMN - WITH FINISH AND INSULATION AND PLASTERBOARD AND FIBRE CHANNELS AND WATER RESISTANT PLASTERBOARD AND VAPOR BARRIER AND SOUND INSULATION AND SOUND BARRIER AND SOUND BARRIER
- 11. 100mm CONCRETE WALL / COLUMN - WITH FINISH AND INSULATION AND PLASTERBOARD AND FIBRE CHANNELS AND WATER RESISTANT PLASTERBOARD AND VAPOR BARRIER AND SOUND INSULATION AND SOUND BARRIER AND SOUND BARRIER AND SOUND BARRIER
- 12. 100mm CONCRETE WALL / COLUMN - WITH FINISH AND INSULATION AND PLASTERBOARD AND FIBRE CHANNELS AND WATER RESISTANT PLASTERBOARD AND VAPOR BARRIER AND SOUND INSULATION AND SOUND BARRIER AND SOUND BARRIER AND SOUND BARRIER AND SOUND BARRIER
- 13. 100mm CONCRETE WALL / COLUMN - WITH FINISH AND INSULATION AND PLASTERBOARD AND FIBRE CHANNELS AND WATER RESISTANT PLASTERBOARD AND VAPOR BARRIER AND SOUND INSULATION AND SOUND BARRIER AND SOUND BARRIER AND SOUND BARRIER AND SOUND BARRIER
- 14. 100mm CONCRETE WALL / COLUMN - WITH FINISH AND INSULATION AND PLASTERBOARD AND FIBRE CHANNELS AND WATER RESISTANT PLASTERBOARD AND VAPOR BARRIER AND SOUND INSULATION AND SOUND BARRIER AND SOUND BARRIER AND SOUND BARRIER AND SOUND BARRIER
- 15. 100mm CONCRETE WALL / COLUMN - WITH FINISH AND INSULATION AND PLASTERBOARD AND FIBRE CHANNELS AND WATER RESISTANT PLASTERBOARD AND VAPOR BARRIER AND SOUND INSULATION AND SOUND BARRIER AND SOUND BARRIER AND SOUND BARRIER AND SOUND BARRIER
- 16. 100mm CONCRETE WALL / COLUMN - WITH FINISH AND INSULATION AND PLASTERBOARD AND FIBRE CHANNELS AND WATER RESISTANT PLASTERBOARD AND VAPOR BARRIER AND SOUND INSULATION AND SOUND BARRIER AND SOUND BARRIER AND SOUND BARRIER AND SOUND BARRIER
- 17. 100mm CONCRETE WALL / COLUMN - WITH FINISH AND INSULATION AND PLASTERBOARD AND FIBRE CHANNELS AND WATER RESISTANT PLASTERBOARD AND VAPOR BARRIER AND SOUND INSULATION AND SOUND BARRIER AND SOUND BARRIER AND SOUND BARRIER AND SOUND BARRIER
- 18. 100mm CONCRETE WALL / COLUMN - WITH FINISH AND INSULATION AND PLASTERBOARD AND FIBRE CHANNELS AND WATER RESISTANT PLASTERBOARD AND VAPOR BARRIER AND SOUND INSULATION AND SOUND BARRIER AND SOUND BARRIER AND SOUND BARRIER AND SOUND BARRIER
- 19. 100mm CONCRETE WALL / COLUMN - WITH FINISH AND INSULATION AND PLASTERBOARD AND FIBRE CHANNELS AND WATER RESISTANT PLASTERBOARD AND VAPOR BARRIER AND SOUND INSULATION AND SOUND BARRIER AND SOUND BARRIER AND SOUND BARRIER AND SOUND BARRIER
- 20. 100mm CONCRETE WALL / COLUMN - WITH FINISH AND INSULATION AND PLASTERBOARD AND FIBRE CHANNELS AND WATER RESISTANT PLASTERBOARD AND VAPOR BARRIER AND SOUND INSULATION AND SOUND BARRIER AND SOUND BARRIER AND SOUND BARRIER AND SOUND BARRIER

### LEGEND AND GENERAL

- 1. REFER TO SPECIFIC ENDINGS DRAWINGS FOR LOCATION OF ENDINGS
- 2. REFER TO ENDINGS ENDINGS DRAWINGS FOR LOCATION OF ENDINGS
- 3. REFER TO ENDINGS ENDINGS DRAWINGS FOR LOCATION OF ENDINGS
- 4. REFER TO ENDINGS ENDINGS DRAWINGS FOR LOCATION OF ENDINGS
- 5. REFER TO ENDINGS ENDINGS DRAWINGS FOR LOCATION OF ENDINGS
- 6. REFER TO ENDINGS ENDINGS DRAWINGS FOR LOCATION OF ENDINGS
- 7. REFER TO ENDINGS ENDINGS DRAWINGS FOR LOCATION OF ENDINGS
- 8. REFER TO ENDINGS ENDINGS DRAWINGS FOR LOCATION OF ENDINGS
- 9. REFER TO ENDINGS ENDINGS DRAWINGS FOR LOCATION OF ENDINGS
- 10. REFER TO ENDINGS ENDINGS DRAWINGS FOR LOCATION OF ENDINGS
- 11. REFER TO ENDINGS ENDINGS DRAWINGS FOR LOCATION OF ENDINGS
- 12. REFER TO ENDINGS ENDINGS DRAWINGS FOR LOCATION OF ENDINGS
- 13. REFER TO ENDINGS ENDINGS DRAWINGS FOR LOCATION OF ENDINGS
- 14. REFER TO ENDINGS ENDINGS DRAWINGS FOR LOCATION OF ENDINGS
- 15. REFER TO ENDINGS ENDINGS DRAWINGS FOR LOCATION OF ENDINGS
- 16. REFER TO ENDINGS ENDINGS DRAWINGS FOR LOCATION OF ENDINGS
- 17. REFER TO ENDINGS ENDINGS DRAWINGS FOR LOCATION OF ENDINGS
- 18. REFER TO ENDINGS ENDINGS DRAWINGS FOR LOCATION OF ENDINGS
- 19. REFER TO ENDINGS ENDINGS DRAWINGS FOR LOCATION OF ENDINGS
- 20. REFER TO ENDINGS ENDINGS DRAWINGS FOR LOCATION OF ENDINGS

### FLOOR FINISHES

| Code | Description     | Code | Description  | Code | Description   |
|------|-----------------|------|--------------|------|---------------|
| CPT  | CONCRETE        | PT   | POLYURETHANE | GFT  | GRANITE       |
| OT   | ORIENTAL TILE   | GR   | GRANITE      | CF   | CERAMIC FLOOR |
| WT   | WOOD TILE       | MS   | MARBLE       |      |               |
| CS   | CERAMIC TILE    | TM   | TERRAZZO     |      |               |
| CMP  | CERAMIC MOSAIC  | TM2  | TERRAZZO     |      |               |
| EX   | EXTERNAL FINISH | MS   | MARBLE       |      |               |
| CP   | CONCRETE        | SP   | STONE FINISH |      |               |

LEVEL 5 PLAN  
1:100

LEVEL 6 PLAN  
1:100

### CONSULTANTS

**Basnet Consulting Engineers**  
Building Services  
616 St Kilda Road Melbourne 3004  
Telephone: (03)9510 4888 Fax no.: (03)9510 4888

**Connell Wagner**  
Structural and Civil Engineers  
89 Albert Road, South Melbourne 3206  
Telephone: (03)9697 8333 Fax no.: (03)9697 8333

**Donald Cant Watts Corke**  
Quantity Surveyor  
126 Wellington Parade, East Melbourne 30  
Telephone: (03)9417 4567 Fax no.: (03)9417 4567

**Philip Chen & Associates**  
Building Certification  
Level 9.108 Lonsdale Street Melbourne 30  
Telephone: (03)9562 2200 Fax no.: (03)9562 2200

**KLM Gerner P/L**  
Landscape Architect  
61 - 63 Chamberwell Rd, Hawthorn East, 31  
Telephone: (03)9882 7786 Fax no.: (03)9882 7786

**Allom Lovell**  
Conservation Architect  
Lvl 1.35 Lt. Bourke St, Melbourne 3000  
Telephone: (03)9662 3344 Fax no.: (03)9662 3344

**Watson Moss Growcott**  
Acoustic Engineering  
Suite 7.696 High St, Kew 3102  
Telephone: (03)9859 9447 Fax no.: (03)9859 9447

**Meinhardt Pty Ltd**  
Fire Engineering  
601 St Kilda Road, Melbourne 3004  
Telephone: (03)9530 1200 Fax no.: (03)9530 1200

**Grogan Richards**  
Hydraulic Engineering  
55 Moor St, Fitzroy 3066  
Telephone: (03)9417 7833 Fax no.: (03)9417 7833

This drawing should be read in conjunction with relevant contracts, specifications and drawings. Copyright of this drawing is vested in the Architect. Dimensions are in millimetres. Levels are in m. Do not scale off drawings. Use figured dimensions. Check all dimensions on site. Report discrepancies immediately.

**Daryl Jackson Pty Ltd**  
Architects, Interior Designers

35 Lt Bourke St, Melbourne 3000  
Tel: (03)9662 3022 Fax: (03)9662 5239  
djm@djackson.com.au

Project:  
**UNIVERSITY & CITY OF BAL**  
**SCHOOL OF VISUAL & PERFORMING ARTS & ALFRED DEAKIN PL**

Scales: Plot Date 05-01  
1:100 Dwg Date SEP

Drawn By: JB KN  
Checked By: PC

Description:  
STATE GOVERNMENT OFFICE  
LEVEL 5 & 6