

A photograph of a waterfall in a dense, mossy forest. The water flows over dark, moss-covered rocks, creating white foam. The surrounding vegetation is thick with green moss and various ferns. The scene is misty and atmospheric.

CORA
LYNN

FALLS



**NATURE
SERIES**

CORA LYNN FALLS

CONTRIBUTORS

Courtesy State Library Victoria
Parks Victoria

Simone Adams
Tony Ballino
Kathie Maynes
David & Debbie Hibbert

HISTORIC FACTSHEET

CORA LYNN FALLS

Name: Cora Lynn Falls
Location: Marysville
Type: Medium sized Cascade
Track: Medium Grade
GPS: S37.559679, E145.877869

Located near the Cambarville Historic Township and Day Visitor Area, Cora Lynn Falls is one of the more popular medium sized waterfalls in the Marysville area.



Cora Lynn Falls is a cascading style waterfall found along the Cumberland Walking Track. The track commences opposite the entrance to the Cambarville Day Visitor Area, off the Woods Point Road in the Yarra Ranges National Park. It is one of a series of beautiful waterfalls in the Marysville area. Others include Steavenson Falls, Keppel Falls, Phantom Falls and the Cumberland Falls. While Cora Lynn is smaller than both the Steavenson and Keppel Falls, it remains popular thanks to the close proximity of the viewing platform to the falls.

HISTORIC FACTSHEET

CORA LYNN FALLS

Cora Lynn Falls avoided major damage during the 2009 Black Saturday Bushfires, thanks to its dampness and location deep in a protected valley. The surrounding area was devastated, which is evidenced by the dead timbers visible along the walk track.

The Cora Lynn Falls carpark is around 920 metres above sea level, while the Falls is around 860 metres above sea level (a drop of 60 metres).

Always be aware of wildlife when driving in the bush and ensure you wear appropriate clothing for the bush and time of year. Conditions can change quickly in alpine areas, so dress appropriately and always let people know of your travel plans.


It is always best to carry water with you when walking in the bush and always let someone know of your travel plans. Please obey fire regulations during the fire season.

The Cambarville Day Visitor Area, which has toilets, interpretative signage, a memorial plaque on a rock, picnic tables, and one undercover picnic table.



**The track to Cora Lynn Falls near
Marysville circa 1920**

Photographer George Rose
Courtesy State Library Victoria



HISTORIC FACTSHEET

TIMELINE

Circa 1860

The Cora Lynn Falls, close to the old Yarra Track, was first discovered during a period when thousands of miners flocked to the area hoping to find riches.

7 April 2010

Artworkz conducted a photoshoot of falls.

12 December 2012

Artworkz conducted a photoshoot of falls.

August 2013

Artworkz commenced work on this factsheet.

11 May 2017

Artworkz conducted a photoshoot of falls.

HISTORIC FACTSHEET

CORA LYNN FALLS



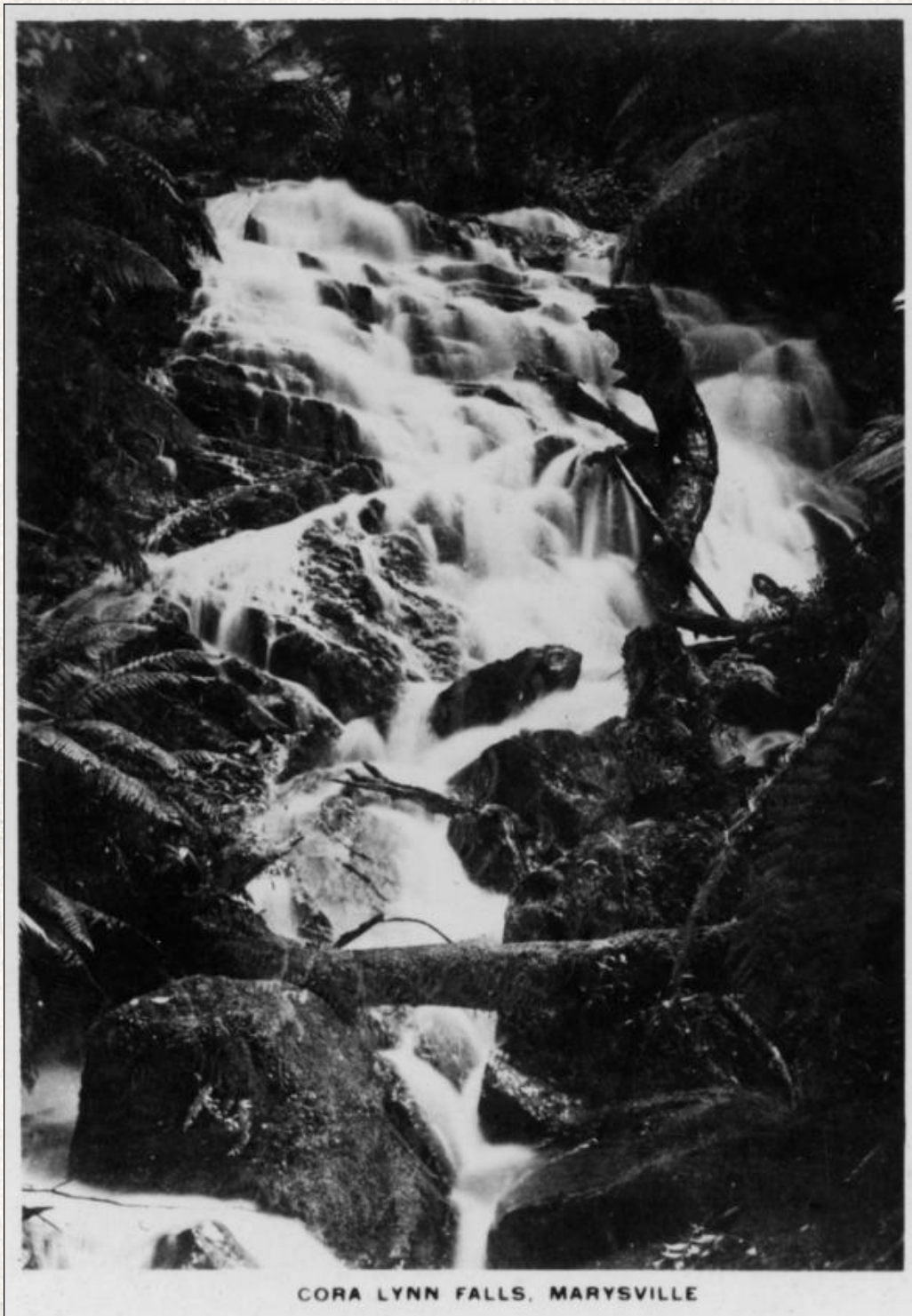
THE ROSE SERIES P.4947 CORA LYNN FALLS, MARYSVILLE, VIC.
COPYRIGHT

Cora Lynn Falls, Marysville circa 1920

Photographer George Rose - Courtesy State Library Victoria

HISTORIC FACTSHEET

CORA LYNN FALLS



CORA LYNN FALLS, MARYSVILLE

Rose Postcards from the 1920s of Cora Lynn Falls

All photographs courtesy Simone Adams 2011 - Photographer George Rose

HISTORIC FACTSHEET

CORA LYNN FALLS



THE ROSE SERIES, P. 2327
Copyright

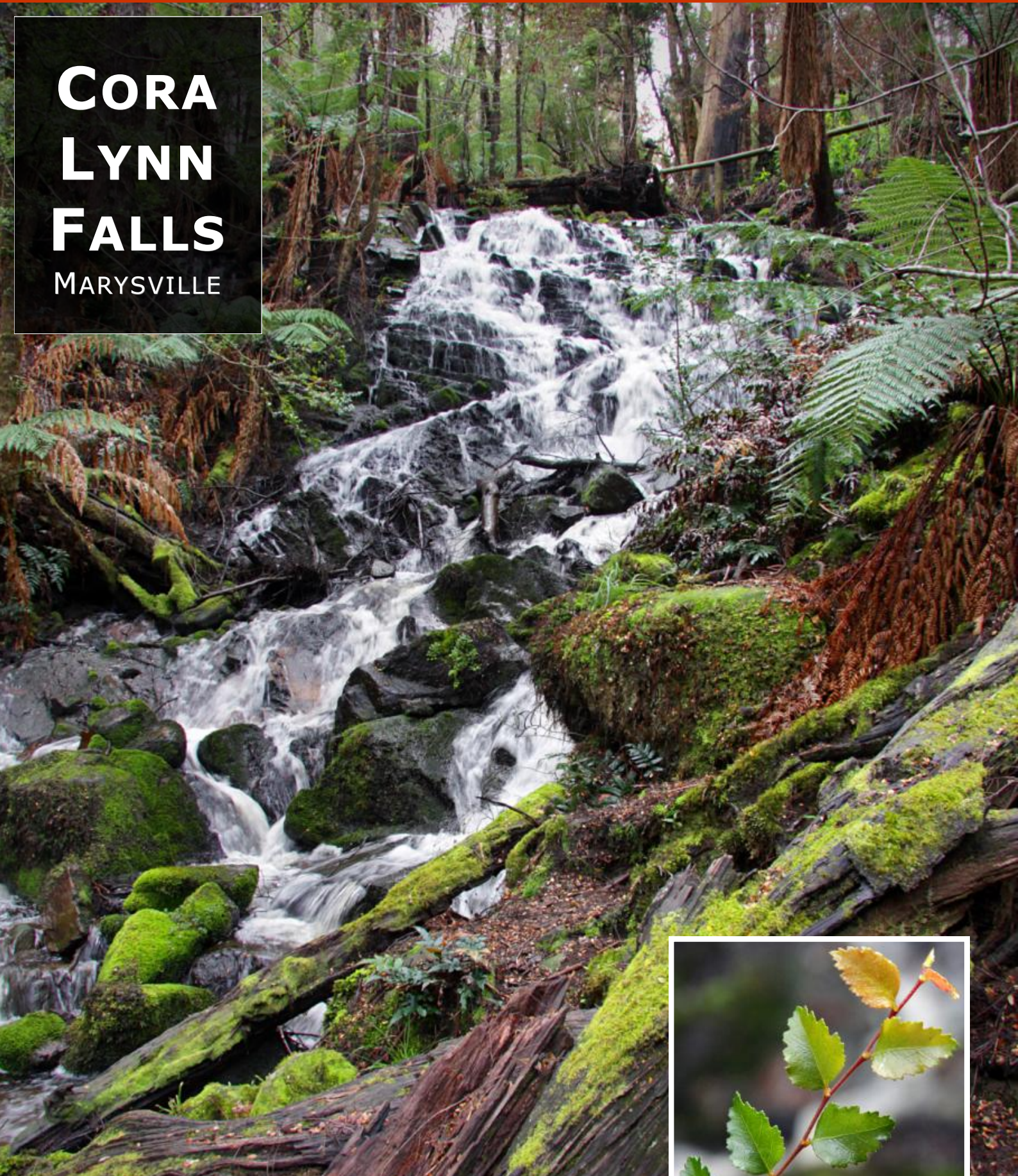
CORA LYNN FALLS, MARYSVILLE, VICTORIA

Rose Postcards from the 1920s. Cora Lynn Falls

Photographer George Rose - Courtesy State Library Victoria

CORA LYNN FALLS

MARYSVILLE



The highly regarded Cora Lynn Falls.

Located near the Historic Cambarville Village on the Marysville-Woods Point Road, this little waterfall offers much. There is a short walk to the Falls from the carpark area.





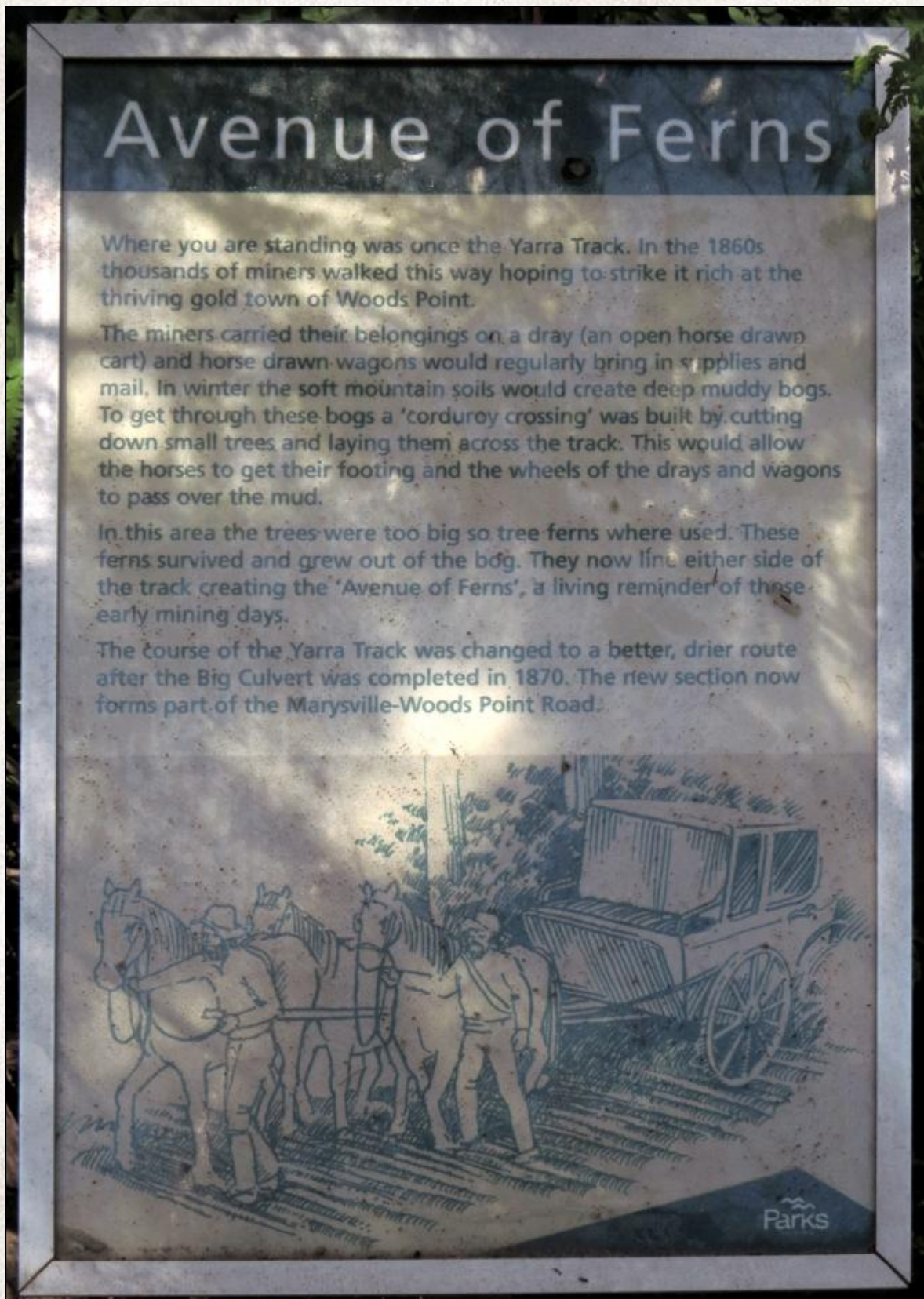




The stairs leading down to the lower viewing platform

HISTORIC FACTSHEET

CORA LYNN FALLS



Signage along the Cora Lynn Track in 2012

FEATURED PANORAMA

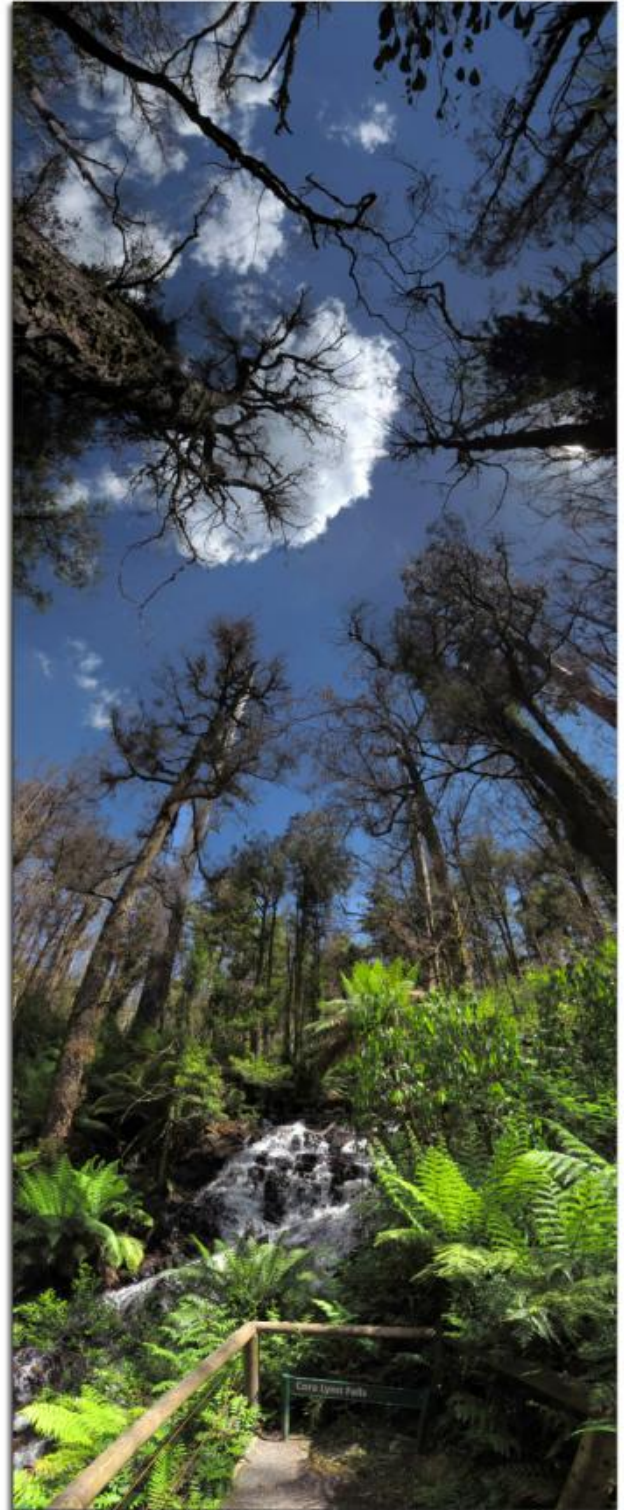
Cora Lynn Falls, near Marysville in 2012

This 180 degrees
Panorama was taken
with a budget camera
and shows the
beautiful Cora Lynn
Falls in a manner
not often seen.

As can be seen, it was
a stunning day for
visiting this little
hidden wonder.

The walk to the bottom
of the Falls from the
parking area took me
just ten minutes.

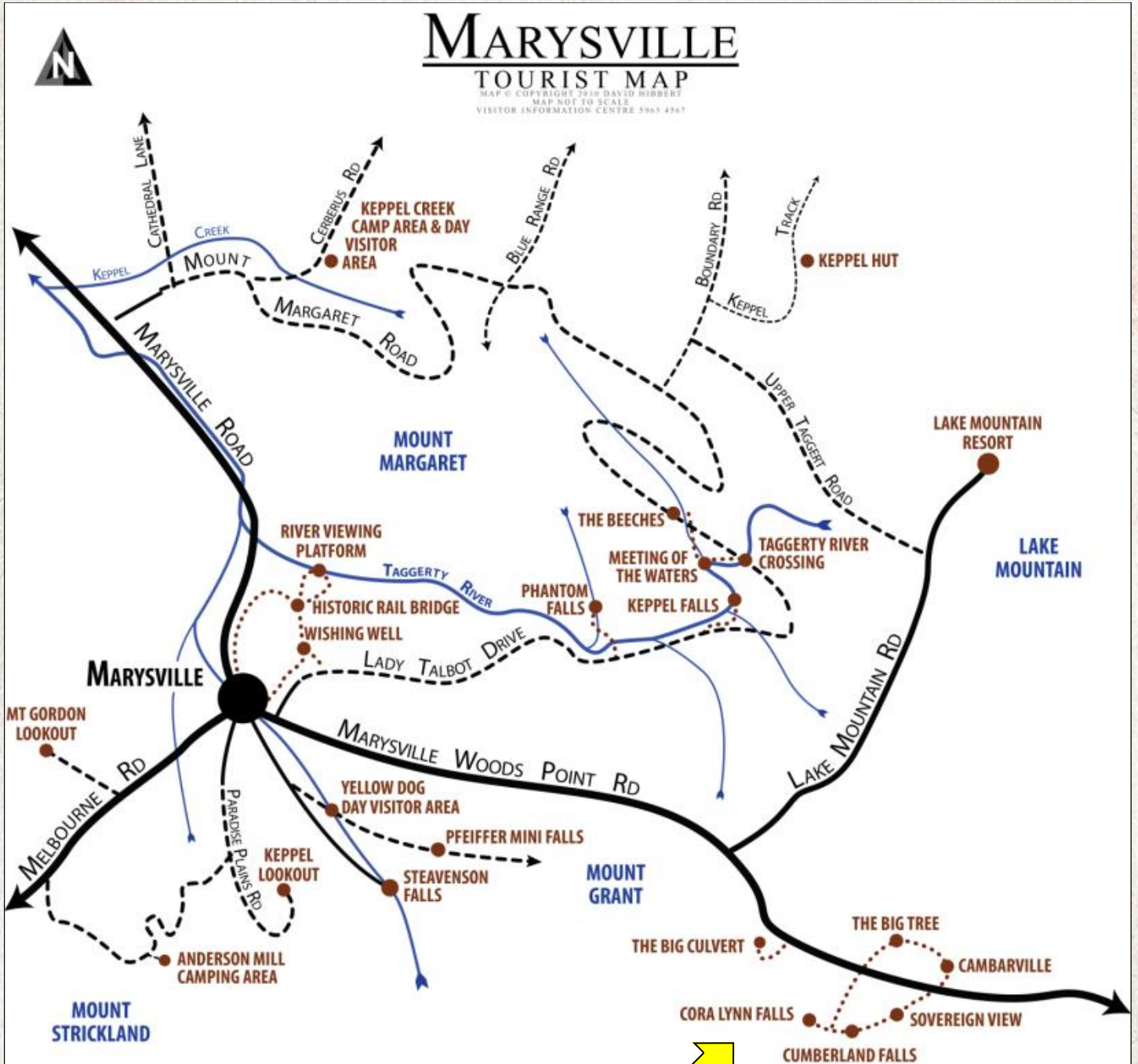
After I walked to the
Falls, I retreated to
Cambarville and had a
cuppu in the new
picnic area.



[CLICK HERE FOR A LARGER VERSION](#)

HISTORIC FACTSHEET

MAP





Artworkz

Serving the Community