

The
Triangle News
is a project
of the
Marysville
& District
Lions Club Inc.

ABN 32 727 809 965

MARYSVILLE

triangle news



We Serve

NARBETHONG & GRANTON

BUXTON & TAGGERTY

Friday April 1st 2011

President Glenn McFadzean

Vol. 38 No. 11

Marysville & District Chamber of Commerce

On Friday night 25th March 2011 at the Black Spur Inn, Narbethong, David Stirling proudly accepted the "Rural Community Spirit Award 2011" from Dr. Greg Walsh, Chairman of the Champions of the Bush Organisation & Angela Hutson, CEO East Gippsland Institute of TAFE, on behalf of the Marysville & District Chamber of Commerce, as well as a financial award.

This award was presented for the "Dedication and tireless efforts to rebuild the business and spirit of the Marysville, Buxton, Narbethong and Taggerty communities following the 2009 Black Saturday bushfires."

"The Marysville and District Chamber of Commerce is an inspiration to other communities around Australia rebuilding their livelihoods following natural disaster."

This is a great achievement as a result of the hard work and dedication by members of the Marysville & District Chamber of Commerce and reinforces the important position and responsibility this organisation holds within our communities.

For those that may not be familiar with "The Champions of the Bush", this is a group of businesses and organisations that operate proudly in regional Australia. and committed to championing the cause of regional and rural Australia.

Photo:

Dr. Greg Walsh- Chairman, Champions of the Bush, David Stirling - President, Marysville & District Chamber of Commerce, Angela Hutson - CEO, East Gippsland Institute of TAFE

LATE NIGHT SHOPPING COMES TO MARYSVILLE CENTRAL EASTER SATURDAY!!!

Lit & Beyond and Penni Lanes will be open from 10am - 8pm Sat 23rd.

Lit will have SPECIALS with prices starting at \$5 and lots of new winter stock arriving.

Penni Lanes will have a 20% DISCOUNT on selected items and many more bargains to be had.

Candles, fashion, baskets, gift ware, throws, jewellery and much more.

Celebrate Easter with us by coming in and grabbing a bargain....we look forward to seeing you!!

The girls at Lit & Beyond and Penni Lanes



Sugarloaf Saddle re-built and ready for visitors

On Tuesday, Member for Seymour, Cindy McLeish, officially re-opened the re-built day visitor area at Sugarloaf Saddle as part of celebrations to mark an important point in Cathedral Range State Park's recovery from the Black Saturday fires. The improved Sugarloaf Saddle day visitor area is a key part of over \$780,000 of investment in rehabilitation, visitor facilities and infrastructure repairs needed after over 92 per cent of the park was burnt in February 2009.

The upgraded day visitor area include an architect designed shelter for school and rock climbing groups, picnic facilities, landscaping, fencing, toilets and car parking.

Parks Victoria staff were joined by members of the parks community including Traditional Owners, Friends of Cathedral, tour operators, school and rock climbing groups.

"Today is about returning more of Cathedral Range State Park to visitors and local people who are now able to enjoy their park again," said Andrew Markwick, Chief Ranger.

"The day visitor area is better than ever and will give day groups an excellent base to explore nearby rock climbing areas and local walking tracks."

"Work to restore other fire affected areas in the park continues with visitor information signs, bridges and track work underway, said Mr Markwick.

After the fires the park was closed to protect visitor safety until December 2009 when Neds Gully and Cooks Mill camp grounds were opened. Since then the majority of the park has reopened to visitors.

Cathedral Range State Park is a 3,577 hectare park. Over 3,200 hectares were burnt in the Kilmore-Murrindindi fire.

Parks Victoria has worked hard since the fire and September 2010 floods to return visitor access to the park with repairs and upgrades to roads, tracks and trails, tree risk work, pest animal and weed control as well as re-building park facilities like toilets, information signs, tracks, steps, and boardwalks.

Cathedral Range State Park features a spectacular, rugged rocky ridge and rich natural and cultural heritage. The park offers a range of activities from relaxed camping by a clear mountain stream to an exciting climb to its high exposed peaks.

For more information call Parks Victoria Information Centre on 13 1963 or visit parks.vic.gov.au.

Cutting the Ribbon
Left Kate Millar, Parks Victoria Regional Manager, and right Cindy McLeish, Member for Seymour.



BUYING OR SELLING REAL ESTATE?

You need a professional conveyancer
Ph Debra
(03) 5772 2500



Sargeants

Murrindindi

Property Transfer Specialists

Gas & Split Systems To The Triangle Area

We supply gases. L.P.G., Exchange cylinders, Bulk and BBQ. We sell, service and install Split Systems

We supply all Industrial Gases. Oxygen, Acetylene, Argo shield We supply all Hospitality Gases. Co2. Beer gases and Medical.

We supply service and install all Appliances,

We offer interest Free terms to fire affected households.

Free site appraisal for future supply options.

We can have underground storage for your gas. No unsightly cylinders.

Call **Yarra Ranges Gas Heat and Cool** your local supplier

5966 9999

We deliver weekly Glenburn, Yea, Alex and Marysville.

HOME

TIMBER AND HARDWARE

Yenckens Alexandra

FREE DELIVERY

To Taggerty, Buxton
Marysville & Narbethong

EVERY FRIDAY

Truck departs 10am
Phone Orders Welcome
Ph. 5772 2188 Fax 5772 1059

NEW
DOGALOGUE
OUT SOON

CARTWHEELS at BUXTON

Doing **CARTWHEELS** at **BUXTON Primary School!** 2011 is looking to be another creative year for Buxton Primary School with drawing and connection to our environment as well as working together for installing totems in the school grounds. So far the Students have been looking at drawing and creating trees and using Trees as a metaphor for themselves and their environment. Last week they made clay models of their special trees. The artists working this year are Heidi Trudinger, Julia Peddie and Siobhan Kelly. They are being supported by Queensland newcomer to Community Health Teresa Sedgley. Teresa is an experienced psychologist who has also worked extensively in education.

In June 2009 the Triangle Arts Group (TAG) started running an after school art program, in order to bring together children from the Marysville Triangle in a positive creative environment. (TAG had been formed by local artists very soon after the Black Saturday fires.) The program was a huge success, focused on making artworks to be included in the new playground in Marysville. This work culminated in a 5 metre Rainbow Serpent mosaic; a very powerful symbolic artwork for the local towns engaged in rebuilding and recovery. TAG afterschool workshops continued throughout 2010.

In 2010 TAG began hands-on work within the "CARTWHEELS" program. CARTWHEELS is a locally named "Creative arts for wellbeing" program run through the Royal Children's Hospital and is called the Festival for Healthy Living (FHL). This enabled additional performing artists to lead regular workshops - during school hours. The students participated in drama, rhythm games and making up new songs and as the year progressed workshops expanded to include drumming, dance, and circus skills.

In the second half of 2010, TAG and CARTWHEELS artists had several days together working with the students to combine health-promoting concepts with puppets and stories. They were asked to make up a story about "how does your puppet character go through a journey, face difficult challenges, but get to a safe place in the end?" The children formed groups and were given free rein with their concepts, stories, puppets and artwork over several months. The digital story book "The Adventures of the Rainbow Serpent" came about by pulling together various strands of the kids' stories, and includes artwork created by local children over the two years since Black Saturday.

Julia Peddie edited together the children's stories, designed the final storybook, which was projected, read as a bedtime story, and then performed live at an end of year performance at Buxton Hall in December 2010, where TAG and CARTWHEELS worked in unison to create an extraordinary multimedia event. This night also featured the showing of the children's digital puppet stories, with their narration. The creation of these stories was led by local artists working with the school staff: with dramaturgy by Siobhan and Julia; and filming and editing by Heidi. (Note -the storybook and most of the digital stories were shown at Federation Square in February 2011 as part 'Emergence' in commemoration of the second anniversary of Black Saturday)

The live performance also featured: original songs written by the children with Sharon Bourke and David Joseph; circus and drama coordinated by Dave, Mandy Picket, John Lane and Scott McBurnie, a beautiful five metre Snake puppet made by Michelle Fifer with the community. The Buxton hall was transformed with large scale student artwork on paper from wall to ceiling!

There will be regular articles to keep tabs of what's going on as well as a combined **FESTIVE DAY** on the 27th October 2011 to keep in the diaries for Term 4...For more information please contact the Berry Street Program Coordinator - Nicola Woolford on 5772 3393

PHOTO - the children's clay forest creations last week.



SEAL ROCK COMPUTERS

New and refurbished computers
Virus and malware removal,
repairs, upgrades, operating system repair and reloading.

Wireless networking installation
and maintenance

Your old Vinyl and tapes put on to
CD

Call Paul

57747415 0418337634

sealrock@internode.on.net

BOOKKEEPING AT SEAL ROCK

Business and personal records
updated and maintained
on a monthly basis,

Monthly Profit & Loss Statements
and Balance Sheets provided,
Quarterly and Annual BAS
Statements prepared.

Call Russ to get your personal
or business records into order for
your accountant.

5774 7198

0407 007 502

Lions Triangle Tool Library OPEN HOURS

8.30-10.30 am & 4.00-5.00 pm
FRI, SAT, SUN, MON or
Ph: 0429 939 110 OTHER TIMES
BY ARRANGEMENT
A Marysville & District Lions Club



Mobile Butchering

Russell Barns
Seymour & District
0407 523 420

Beef, Lamb, Pork
Slaughterer, Butcher
Coolroom Supplied

Cut to order
Sausage, Corn Beef Mince

MARYSVILLE CONSTRUCTION UPDATE

March – May 2011

Edition 3

Lend Lease

This update has been prepared to keep residents and businesses informed of the progress of construction works.

Marysville Community Centre

Construction works are fast transforming from in-ground benching and preparation works to concrete structure and erection of the steel building frame.

The site team has worked through resolving complex coordination issues and challenging soil conditions to progress works.

Upcoming activities will include the completion of steel framing followed by blockwork, cladding and roofing works. The project is scheduled for completion in September 2011.

Gallipoli Park

Works are fast approaching completion with all stonework, hard paths and soil placement now complete. The installation of playground equipment and the construction of the gazebo are well progressed.

Planting of the 5,000 small plants has commenced. The planting of mature trees has been delayed until we reach cooler months. This planting programme will assist with regeneration.

The new bridge over Leary's Creek is being installed and the team is focused on completing the project in time for the opening of Marysville's Playspace and Reflective Gardens.

The million dollar redevelopment of the park, featuring a state-of-the-art children's playground, gardens and statue, will be unveiled as part of phase one of the Gallipoli Park redevelopment.

The opening will take place in Gallipoli Park from 11am-1pm on Saturday 9 April and all are welcome.

Murchison Street and Town Amenity Project

The procurement of the trades for this project is well progressed. The finalisation of negotiations and awarding of contracts are expected to take place in April, with works to follow.

The project has been split into two contracts: landscape focused and the reconstruction of Darwin Street. The landscaping element will include new gateway entrances, footpath repair works and additional tree planting in the central business area.

The reconstruction of Darwin Street will provide a higher standard of access to the Marysville Central shopping precinct and a safer entry to Murchison Street. A new offstreet carpark will also be constructed immediately to the west (Lyell Street side) of Marysville Central.

It is expected that minimal disruption to businesses along Murchison Street will occur as most activities are off the main road; however some temporary loss of on street carparking will occur when roadside works are required.

Access to Marysville Central will be maintained although customers may need to use either Lyell Street or Murchison Street as some sections may be closed during construction.

Easter site shutdown

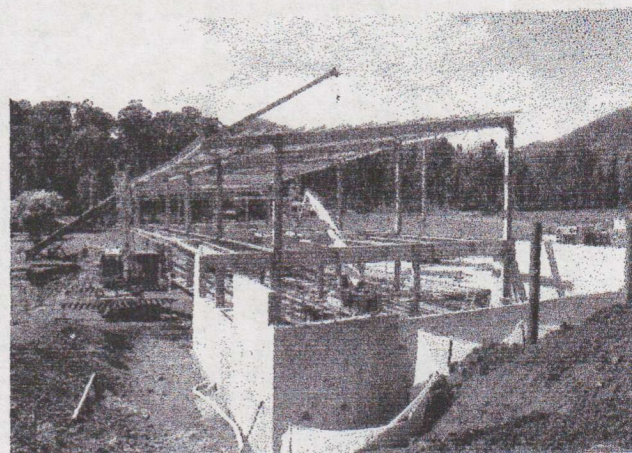
The last working day on site will be Thursday 21 April, and site workers will return to work on Monday 2 May.

Further information

Lend Lease is working closely with the Victorian Bushfire Reconstruction and Recovery Authority (VBRRA) and Murrindindi Shire Council to ensure that we minimise any disruption caused by these current works to local residents and businesses.

For Lend Lease construction site inquiries, please contact:

Trevor Kemp
General Foreman
M: 0418 558 760



Construction of Marysville Community Centre, March 2011