

The
Triangle News
Is a project
of the
Marysville
& District
Lions Club Inc.

ABN 32 727 809 965

MARYSVILLE

triangle news



We Serve

NARBETHONG & GRANTON

BUXTON & TAGGERTY

Friday April 29th 2011

President Glenn McFadzean

Vol. 38 No. 13

Discover serene beauty of The Beeches trail

In early April around 14 people joined Parks Victoria's community walk to explore the shady and tranquil trail leading to the Meeting of the Waters junction.

This lush rainforest walk - part of The Beeches four kilometre loop trail located along Lady Talbot Drive 10km from Marysville - was only lightly burnt in the 2009 fires.

New elevated boardwalks have been installed after the fires to protect both the interconnected and sensitive Myrtle Beech root systems and the ground surface from compaction. The trail winds through the gnarled trunks and ferns, leading to bridges that cross the glistening boulder-

strewn Whitehouse Creek and Taggerty River.

"Towering Myrtle Beech trees, remnants from the Gondwana era, formed a dappled canopy under which we walked," said Parks Victoria's Community Engagement Officer Samantha Strong.

"Sunshine filtered onto ferns scattered both on the ground and up tree trunks, as a reminder that this is a pocket of Cool Temperate Rainforest. It was this dampness that reduced the fire intensity on Black Saturday. These pockets have become important refuges in which wildlife sheltered since the fires. Lyrebirds have made good use of this habitat,

as have other bird species that can be heard along the length of the trail," said Samantha.

Phantom Falls walk along Lady Talbot Drive and walks around Cambarville are also open and each has a different mood and features to rediscover.

The next community walk will be held in May at Cathedral Range State Park and all are welcome. The date will be announced soon so stay tuned for local advertisements.

For further information on the next community walk please contact Samantha Strong at Parks Victoria on 0409 544 643.

Mysterious Dunnart a welcome discovery at Cathedral Range

Remote camera surveys have captured an image of what researchers believe may be the threatened Whitefooted Dunnart in bushland recovering from the 2009 bushfires.

Two years after the fires burnt through the Cathedral Range State Park, south of Alexandra, cameras are helping to record the return of native species to the post-fire environment.

Senior Scientist with the Department of Sustainability and Environment's (DSE) Arthur Rylah Institute (ARI)

Jenny Nelson said: "The cameras captured a tantalizing glimpse of either a Whitefooted Dunnart or Common Dunnart."

"The Cathedral Range State Park Friends Group worked with St Mary's Primary School to set up the camera survey points following the fires, in collaboration with Parks Victoria and DSE," Dr Nelson said.

"It is the first time a Dunnart had been seen in the Cathedral Range State Park and that is exciting for the group and researchers."

"To find out how widespread Dunnarts are, we have expanded the area of the survey to incorporate Lake Eildon National Park and adjoining State Forest."

"15 sites were surveyed, each with two remote cameras, across a range of burnt and unburnt areas, including seven sites within Lake Eildon National Park."

"Dunnarts were recorded at four sites within the study area."

"Although Common Dunnarts and Whitefooted Dunnarts can't be distinguished from images alone, based on earlier records in the area and the habitat surveyed, the species is most likely to be the Whitefooted Dunnart."

"This information will contribute to our knowledge of how marsupials respond to fires and also make recommendations about the future management of these sites."

"The project highlights the importance of survey work being undertaken by community groups in collaboration with DSE and Parks Victoria."

The Dunnart survey project is one of 31 natural values recovery projects of the Victorian and Commonwealth Governments' "Rebuilding Together" - Statewide Bushfire Recovery Plan announced in October 2009.

For more information go to www.dse.vic.gov.au or call the Customer Service Centre on 136 186.

Gallipoli Park re-opens as Marysville continues to rebuild

Marysville's popular Gallipoli Park precinct has been officially re-opened to the public for the first time since the devastating Black Saturday bushfires in 2009.

Deputy Premier and Minister for Bushfire Response Peter Ryan joined the newly-appointed Governor of Victoria, the Hon Alex Chernov AO QC, to officially open the \$1.8 million park redevelopment which includes a state-of-the-art children's playground and reflective garden.

Mr Ryan said it was fantastic to see the community come together to celebrate such an important milestone in the rebuilding of Marysville.

"The restoration of the park has been a community effort, led by the local council with input and provision of resources from businesses, groups and individuals.

"The playspace is state-of-the-art and has a range of equipment including an elevated sandpit, slides, roundabout, rope climbing net, flying foxes and swings."

"The Reflective Garden provides a main entry into Gallipoli Park and features a gazebo and 'garden rooms', and the New Life Sculpture, designed and produced by local artist Bruno Torfs, is a permanent symbol of new life in community."

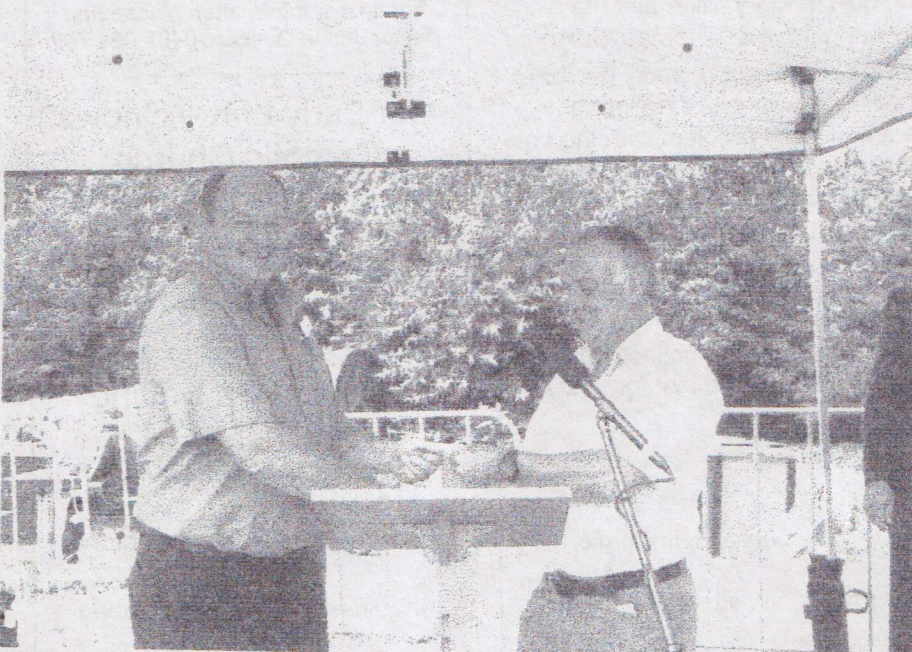
Stage one of the Gallipoli Park restoration was funded by the Victorian Bushfire Appeal Fund and a range of private donors. Further restorative works will continue as part of stage two including new paths, landscaping, additional signage and new park furniture.

Following the opening of the park, the Chairman of the Gallipoli Park Committee of Management, Nat Morandi accepted a cheque from Marks IGA in Mansfield for just over \$33,000.00.


Marks IGA directed these funds from the points system operating at the supermarket to Marysville soon after the fire, and has held these funds specifically for Gallipoli Park. It is intended that a roof will be provided for the BBQ that is beside the RAC car park near Leary's Creek.

On behalf of the Committee, Nat thanked Marks IGA family owners Stephen and Greg Marks, and representative, Rod Kilpatrick, and the people of Mansfield for their thoughts and good wishes.

Photo: Nat Morandi receiving the cheque from Mr Stephen Marks.



*Whatever you're looking for,
you'll find it at
the Yea Country Market.*



First Saturday of every month 9:00am - 2:00pm

Mark your calendar for the first Saturday of every month. It's a day when the community comes together to celebrate the local produce and services. The Yea Country Market is a wonderful place to find everything you need for your household. It's a great day to spend with family and friends. The market is held at the Yea Railway Park. It's a great day to spend with family and friends. The market is held at the Yea Railway Park. It's a great day to spend with family and friends. The market is held at the Yea Railway Park.

Yea Railway Park

CUSTOM MADE



*** DIY or INSTALLED**
*** KITCHENS**
*** LAUNDRIES**
*** BATHROOMS**

127 Main Street, Lilydale 3140
www.flat-pack-kitchen.com.au

Tel. 9735 2121

Independently owned and operated *FREE
Delivery *3 week turnaround

BAL ASSESSMENTS

Bushfire Attack Level Assessments
AS3959 Method 1 & Method 2 and WMO assessments



John@BAL.net.au
0417 885 747
www.BAL.net.au



Missus Fusspots
For all things tea!

Tea, Teapots, Tableware, Gifts

Open 10am - 4pm
Thursday - Monday
Shop 5, The Village Walk,
Marysville - Ph 5963 4574

Fire reveals the secret of the Buxton Silver Gum

A recent survey by the Department of Sustainability and Environment and Parks Victoria has found the rare Buxton Silver Gum (*Eucalyptus crenulata*) is bouncing back at one of only two places that it is known to exist in the wild.

Parks Victoria Ranger in Charge Julie Flack said: "The Buxton Gum is found in the wild in only two sites in Victoria and is extremely rare. Consequently the natural populations are threatened with extinction. The most viable population is at Buxton, where the swampy habitat had dried out during the drought. A 2005 survey also found no new seedlings and after intense fires burnt this site in 2009 there was concern that this would threaten this significant natural population."

"We feared that the trees at the Buxton Silver Gum Reserve would not survive such an intense fire but when we conducted a new survey in 2010, we found seedlings throughout the site," Ms Flack said.

"The intense fire burnt a significant amount of the topsoil in the Buxton Gum's swampy habitat. This exposed the multi-stemmed structure of the trees and provided a unique opportunity to observe the large underground lignotubers, which are nutrient-rich stems, which enable it to survive fire and then re-sprout."

"This observation re-defined our understanding of the Buxton Silver Gum. We now know it has similar growth characteristics to Wet Mallee species that are adapted to fire and long-lived. Some of the trees at the Buxton Silver Gum Reserve are believed to be hundreds of years old."

"We have been working to reduce threats to the Buxton Silver Gum Reserve since the 2009 fires. Local fire-affected licensed tour operators were employed to construct fencing to restrict browsing by wombats and rabbits. We have also been managing weeds and monitoring for weed re-growth, particularly the parasitic Dodder Laurel."

"Some seedlings growing after the fire are hybrids with the Swamp Gum (*Eucalyptus ovata*), another Eucalypt species in the Reserve. These don't pose a threat to the recovery of the Buxton Gum at this reserve. However, fire management over the next decade will be important to allow the new regrowth to mature."

"We are still learning about this fascinating species. Recent flooding of the site after 16 years is providing perfect growing conditions for the species, so our monitoring is well timed."

"The survey will be repeated in five years, as part of a long term monitoring project originally set up in 2000 by the Upper Goulburn Field Naturalist's Club, funded by the Threatened Species Network and supported by the Department of Sustainability and Environment."

Parks Victoria's work on the Buxton Gum has been funded by the Commonwealth Government's Caring For Our Country Bushfire Recovery program launched in 2009. For more information go to the DSE website or

Council to hold special Budget meeting

Murrindindi Shire Council's Draft 2011/12 Budget will be presented at a special meeting on Wednesday 4 May.

Mayor Peter Beales said the purpose of the meeting would be to consider the adoption of the Draft Budget and Council Plan and the subsequent public exhibition for community comment.

"In developing this year's Draft Budget we have set our priorities based on the third year of our Council Plan as well as our on-going commitments to the bushfire recovery and our community services and infrastructure obligations," Cr Beales said.

"The special meeting meets our statutory obligation to place the Draft Budget on exhibition. Once the Draft Budget has been adopted we would encourage people to make comment."

Councillor Beales said the exhibition dates would be formalised following the outcome of Wednesday's meeting.

SEAL ROCK COMPUTERS

New and refurbished computers
Virus and malware removal,
repairs, upgrades, operating system
repair and reloading.
Wireless networking installation
and maintenance

Your old Vinyl and tapes put on to
CD

Call Paul

57747415 0418337634

sealrock@internode.on.net

BOOKKEEPING AT SEAL ROCK

Business and personal records
updated and maintained
on a monthly basis,

Monthly Profit & Loss Statements
and Balance Sheets provided,
Quarterly and Annual BAS
Statements prepared.

Call Russ to get your personal
or business records into order for
your accountant.

5774 7198

0407 007 502

Lions Triangle Tool Library OPEN HOURS

8.30-10.30 am & 4.00-5.00 pm

FRI, SAT, SUN, MON or

Ph: 0429 939 110

OTHER TIMES BY ARRANGEMENT

A Marysville & District Lions Club
project



Mobile Butchering

Russell Barns
Seymour & District
0407 523 420

Beef, Lamb, Pork
Slaughterer, Butcher

Coolroom Supplied

Cut to order

Sausage, Corn Beef Mince