



Shire of Eltham Historical Society

INCORPORATED

P.O. BOX 137 ELTHAM VICTORIA 3095

NEWSLETTER

NO. 68 SEPTEMBER, 1989

NEXT MEETING

8 PM WEDNESDAY 13 SEPTEMBER, 1989

ELTHAM SENIOR CITIZEN'S CENTRE

MAIN ROAD, ELTHAM

(ENTER FROM SHIRE OFFICE DRIVEWAY)

SLIDE EVENING

BRIDGES & WATERWAYS OF THE SHIRE

DAYLESFORD BUS TRIP

SUNDAY 29 OCTOBER 1989

LEAVES ELTHAM SHIRE OFFICE-8.30 AM.

Silver St.
Railway Bridge
Eltham



Bridges seem to be a major feature of many collections of old photos. Rivers and creeks also are popular subjects. The photo collection of the Society and the Eltham Shire Council are no exception to this rule. They contain many photos on this theme and we have copied them onto slides for this meeting. The collection also includes some present day slides.

The major waterway in the area is the Yarra River which forms the southern boundary of the Shire between Kangaroo Ground and Lower Plenty. Most of the Shire lies within the catchment of the Diamond Creek which is one of the major tributaries of the Yarra. This creek and its own tributary, Arthurs Creek, commence on the Great Dividing Range at Kinglake. Other tributaries of the Yarra, Watsons Creek and the Plenty River respectively form parts of the eastern and western boundaries of the Shire. An area at Kinglake drains easterly to Steels Creek.

The extensive system formed by these waterways and their tributaries has played an important part in the development of the area. Because of the steep terrain, many of the roads and later the railway have followed the line of water courses. In the 1850's alluvial gold found along the water courses brought many new residents to the area. More recently the water courses have been recognized for their recreational and conservation value.

The bridges shown in the photos range from primitive low level structures to major bridges across the Yarra. Also included in the collection are the various bridges along the railway where it goes over or under roads.

Commentary on the slides will be provided by Russell Yeoman.

New members and visitors are most welcome to attend this meeting.

DAYLESFORD BUS TRIP

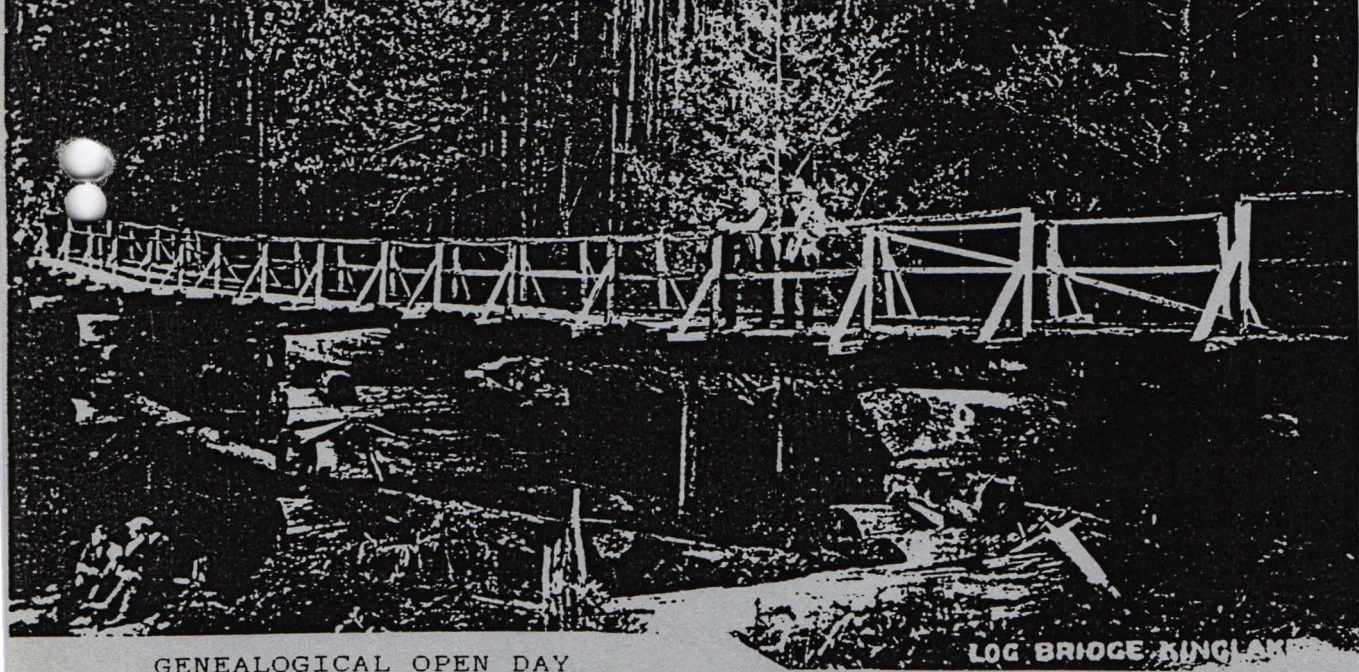
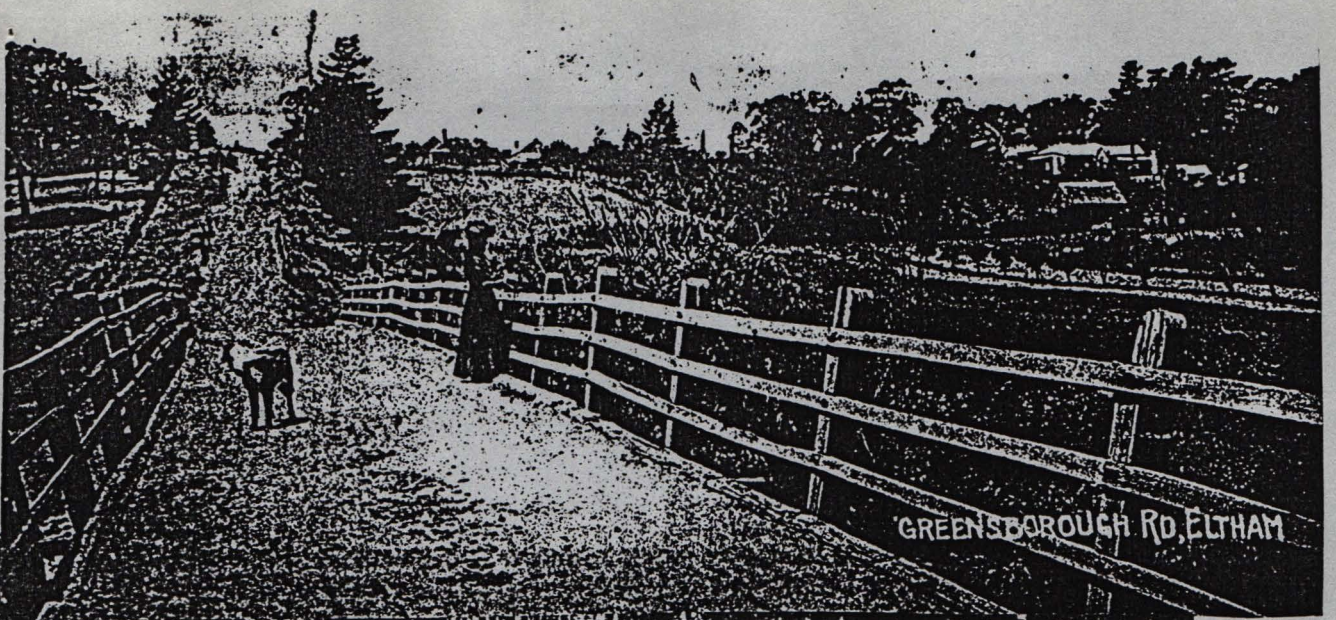
The main places we will visit on this trip are the "Garden of St Erth" near Blackwood and the Daylesford Historical Society's museum.

Following the success of last year's garden trip, it was decided to include a garden visit in this year's spring trip. The large cottage garden around the charming old stone house "St Erth" attracts more than 10,000 visitors each year. The perimeters of the property are planted with native trees and shrubs.

The Daylesford Museum, established in the old School of Mines Building, contains six rooms of local historical exhibits. It includes sections on Aboriginal history, gold mining, household items and antique dresses.

After visiting the museum there should be time for a tour around Daylesford and Hepburn Springs.

The cost of this trip is \$14:00 (Children \$9:00) which includes entry to both the garden and the museum. Bookings can be made by filling in the enclosed form and returning it to the September meeting or the Society's Post Office box. Make a note of the date which is still some time off. Please arrive early so that the bus can leave promptly at 8:30. Bring a picnic lunch and something for morning tea at "St Erth" because the garden is not near any shops.



GENEALOGICAL OPEN DAY

LOG BRIDGE KINGLAK

The Australian Institute of Genealogical Studies is conducting an open day on Saturday 16 September at the Uniting Church Hall, Hartwell. They will have experts on all aspects of genealogical studies to answer questions. You can go any time between 10:00 a.m. and 5:00 p.m. and admission is \$5:00. For enquiries ring Kate Press on 509-7115.

REQUESTS FOR INFORMATION

Dr Geoffrey Searle is currently compiling a list of names for volumes 13 - 16 of the Australian Dictionary of Biography. He is seeking information on people of regional or local importance whose period of prominence was after 1939 and who died before 1980.

Rev. Jock Ryan, President of Nillumbik Historical Society is trying to find a large illuminated address presented to Mr Thomas Collins by the Diamond Creek Brass Band early this century. It may have been given to the Eltham Band in the 1930's.

Contact Russell Yeoman if you have any suggestions on either of these matters.

PLENTY VALLEY COMMUNITY RADIO

The Society has become a member of the organisation set up to establish a community radio station for the Shires of Eltham and Diamond Valley and the City of Whittlesea. The group has obtained the use of the old Yarrambat Primary School as its headquarters. Several pilot broadcasts have already been made on the FM Band and a further one is planned for November.

The Society hopes to be able to incorporate a local history segment in the pilot broadcast and this may become a regular feature if and when a permanent station is established.

The broadcast will not be possible without involvement from members. A tentative theme of gold mining has been decided on but this may be varied if necessary. Anyone wishing to be involved with ideas, expertise or willingness to do some work should contact Sue Law.

OTHER HAPPENINGS

There was a late change of plans for the July meeting because of the illness of proposed guest speaker, Margot Kroyer-Pedersen. The resulting discussion evening was based largely on Keith Chappel's research notes of early land purchasers in the Research area.

People associated with the Research School are very pleased with the Back to Research conducted as part of the School's Centenary celebrations. Many former pupils attended, with some travelling quite long distances to be there. The Society provided a service to copy old photos brought to the event.

The School has produced a book for the Centenary. "Return to Research" is edited by local author Andrew Lemon with contributions by local identities. It is hoped that copies will be available for purchase at the September meeting. The price is \$10:00.

This year's Eltham Community Festival Parade is on Saturday 11 November. Further details will be provided in the next Newsletter but that will only be a short time before the festival. Our theme will be gold mining so members could now give some thought to an appropriate costume, props., etc.

Sue Law	Russell Yeoman	Opal Smith
439-9520	439-9717	439-8902
President	Secretary	Treasurer/Membership Secretary

SHIRE OF ELTHAM HISTORICAL SOCIETY

DAYLESFORD BUS TRIP - SUNDAY 29 OCTOBER 1989

Please reserve the following seats:

Adults _____ @ \$14:00

Children _____ @ \$9:00

TOTAL AMOUNT ENCLOSED \$

Name: _____ Phone: _____

Return this form with payment to P.O. Box 137 ELTHAM 3095