

Shire of Eltham Historical Society

INCORPORATED

P.O. BOX 137 ELTHAM VICTORIA 3095

NEWSLETTER

NO. 74 SEPTEMBER, 1990

WEDNESDAY 12 SEPTEMBER 1990

8:00 PM

GENERAL MEETING

SLIDE PRESENTATION

"ROADS AND BYWAYS OF THE SHIRE OF ELTHAM"

Eltham Senior Citizen's Centre
Main Road Eltham
(Enter from Shire Office Driveway)

* * * * *

SATURDAY - 13 OCTOBER 1990

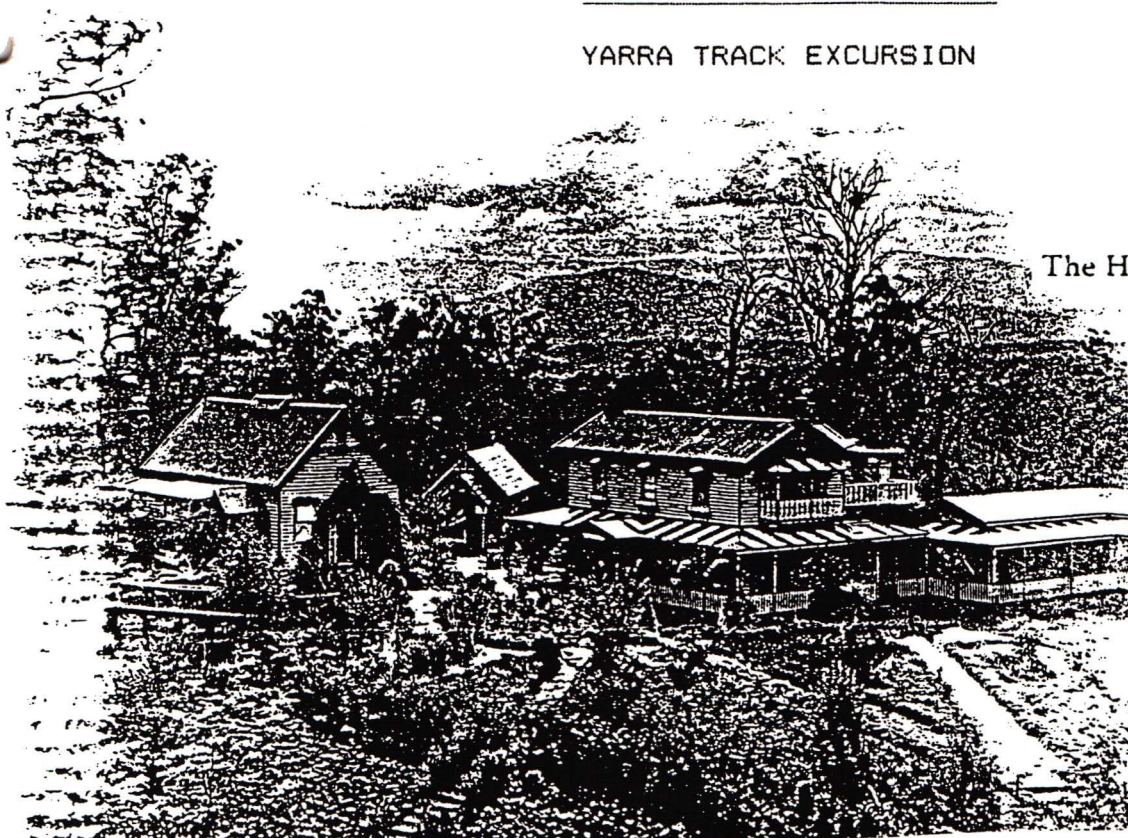
WALTER WITHERS COMMEMORATIVE PLAQUE UNVEILING

WALTER WITHERS RESERVE

* * * * *

SUNDAY 14 OCTOBER 1990

YARRA TRACK EXCURSION



The Hermitage Buildings

1908

SEPTEMBER MEETING

This meeting will deal with an important item of Society business in addition to the scheduled slide presentation. The matter to be discussed concerns a proposal for the Society to establish a museum in the school residence at Kangaroo Ground. This building is surplus to the needs of the school and its future is likely to be in jeopardy unless some viable use is found. It is of at least local historical importance and, from this aspect alone, warrants the attention of the Society.

Discussions with the school indicate that the building may be made available to the Society for whatever purpose we propose. It is not particularly suitable for meetings although, in the not too distant future, the original schoolroom may become available for this purpose. For some time the Society has been collecting items of historical interest with the idea of establishing a local museum. This would seem an excellent opportunity to achieve that objective. Bruce and Joy Ness, who have been storing the Society's collection, are particularly supportive of the idea.

The Committee has considered the proposal and strongly supports it. However, it is felt that there should be participation by other members before a final decision is made. It should be realised that some degree of commitment will be required on the part of members. Help from members will be required to set up and operate the museum. It is not expected that a great deal of individual time will be involved and there will be some flexibility depending on the scope of the project finally decided.

More information on the proposal will be given at the meeting in order that members are properly informed before any decisions are made.

The scheduled item for this meeting is a slide presentation with commentary by Russell Yeoman. The subject is the roads and byways of the Shire of Eltham. Slides to be shown include copies of old photos and some recent photos. They range from suburban streets of Eltham and Montmorency to the mountain roads of Kinglake. In the byways category are views of some of the Shire's bicycle paths including recently completed sections of the Main Yarra Trail at Lower Plenty.

This is not an in-depth study of the local road system - just a series of then and now photos of some well known locations and some views of the lesser known roads and tracks of the area.

WALTER WITHERS COMMEMORATIVE PLAQUE-SATURDAY 13 OCTOBER 1990

We are delighted that Mary Owen, a granddaughter of Walter Withers, has accepted our invitation to unveil the commemorative plaque in the Walter Withers Park.

Members and friends are invited to attend this function which is of considerable significance not only to the Society but also the the Eltham Community.

We look forward to seeing you at the Walter Withers Reserve, corner Bible and Arthur Streets, at 2:30 pm and later for afternoon tea.

As parking space is extremely limited in Bible and Arthur Streets, we suggest that the Safeway carpark, entry from Arthur Street, be used. It is a short walk to Bible Street.

Copies of Andrew Mackenzie's book, 'The Forgotten Manuscripts', will be available - cost \$20.

Would you please ring Sue Law, 439-9520 or Opal Smith, 439-8209 to confirm your acceptance by Wednesday 10 October 1990.

YARRA TRACK EXCURSION - SUNDAY 14 OCTOBER 1990

This excursion was suggested by Ann Thomas, author of 'The Last of the Yarra Track Stopping Places'. Ann has an extensive knowledge of this area and we very much appreciate her offer to accompany us. We will travel through Yarra Glen and Healesville with a stop at Fernshaw Park. Our morning tea stop will be at Steavenson's Falls.

There will be an extended stop in the ash forest at The Cumberland for lunch. After lunch you may wish to explore a small area of the forest with Ann or just relax and quietly appreciate the beauty of this magnificent tall timbered forest.

We will then proceed to 'The Hermitage' at Narbethong. John William Lindt, a celebrated explorer and photographer, built 'The Hermitage', his 'Studio in a Forest', on the top of the Blacks' Spur in the late 1800's. Eventually 'The Hermitage' became a guest house and in the studio Lindt would willingly project lantern slides and lecture his guests. 'The Hermitage' was purchased in a rundown condition ten years ago by Val and John Stafford and we appreciate being able to view their progress with restoration and thank them for the opportunity to inspect the buildings and grounds.

Copies of Ann Thomas' book 'The Last of the Yarra Track Stopping Places' will be available - cost \$6:00.

The bus will leave from the Eltham Shire Offices at 9:00 am, cost is \$15 which includes entry and afternoon tea at the 'Hermitage'. Bring morning tea and a picnic lunch.

Bookings can be made by completing the attached form and returning it to the September meeting or the Society's post office box.

Enquiries can be made to Doug and Gwen Orford on 439-8642.

AUSTRALIAN INSTITUTE OF GENEALOGICAL STUDIES OPEN DAY

The Institute's Annual Open Day will be held on Saturday, 20 October 1990, at the Uniting Church Hall, Cnr Eddy Street and Halley Avenue, Hartwell (Melways Map Ref. 60 B5), entry fee \$5.00.

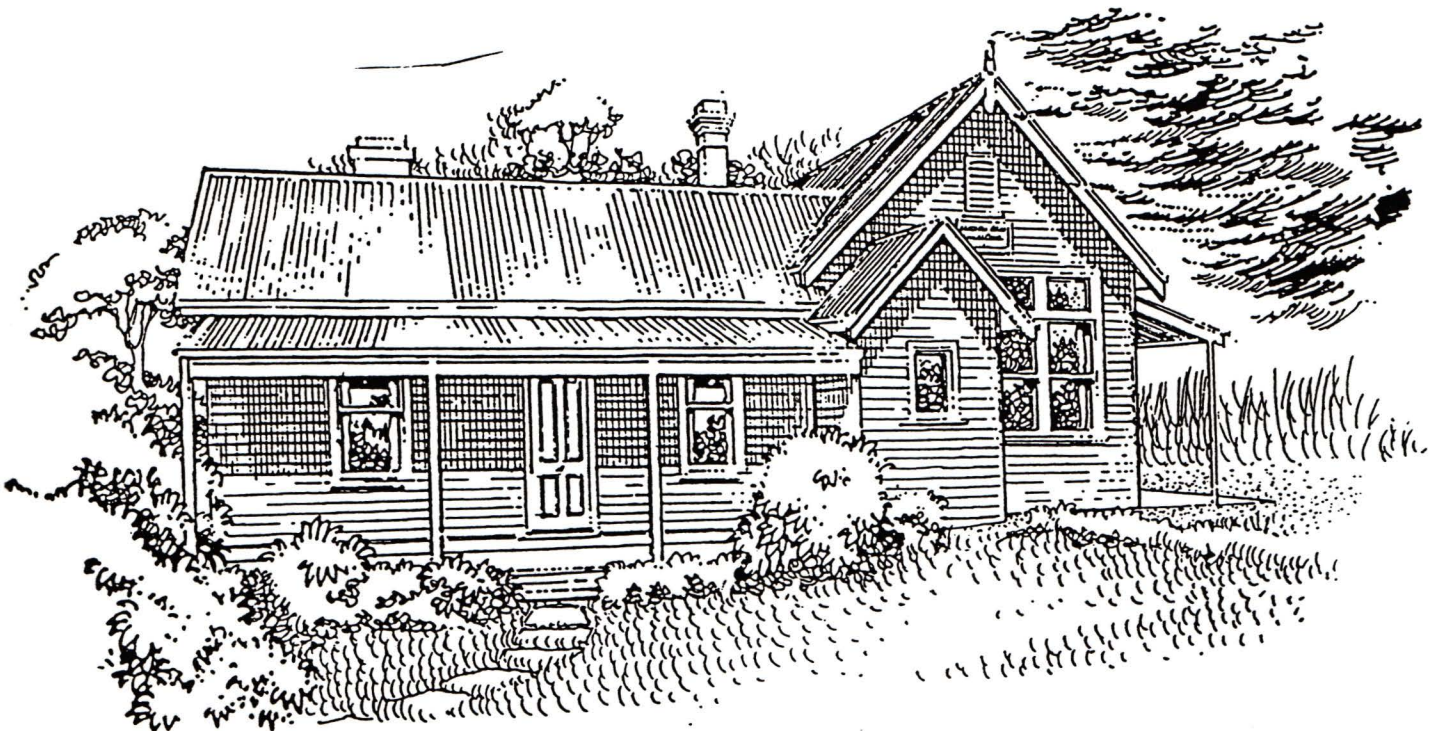
The Open Day gives family history researchers the opportunity to solve some of their research problems on a one-to-one basis with experts in the various fields in family history. A large range of genealogical books will be on sale.

Enquiries may be directed to Fay Gutherie on 879-6340 or Kate Press on 509-7115.

Russell Yeoman
Secretary
439-9717

Sue Law
President
439-9520

Opal Smith
Treasurer/Membership Secretary
439-8209



SCHOOL RESIDENCE
KANGAROO CROUND

SHIRE OF ELTHAM HISTORICAL SOCIETY

'ALONG THE YARRA TRACK' EXCURSION
SUNDAY 14 OCTOBER 1990

Please reserve the following seats:

Adults _____ @ \$15:00

Children _____ @ \$ 9:00

TOTAL AMOUNT ENCLOSED \$

Name:

Phone:

Return this form with payment to: P O Box 137 ELTHAM 3095