

# Shire of Eltham Historical Society

INCORPORATED

P.O. BOX 137 ELTHAM VICTORIA 3095

## NEWSLETTER

NO 78 MAY, 1991

NEXT MEETING 8 PM WEDNESDAY 8 MAY, 1991

ELTHAM SENIOR CITIZEN'S CENTRE

MAIN ROAD ELTHAM

(ENTER FROM SHIRE OFFICE DRIVEWAY)

GUEST SPEAKER: ROSS YOUNG

YARRA VALLEY METROPOLITAN PARK

LOCAL EXCURSION: "DUNMOOCHIN"

12.30 PM SUNDAY 26 MAY, 1991

### MAY MEETING:

Yarra Valley Metropolitan Park extends along both sides of the Yarra River from Ivanhoe and Bulleen to Warrandyte. Some parts of it have been developed by the Board of Works as the park authority. Other parts remain in private ownership at this stage and are earmarked for future acquisition by the Board. The park varies widely in scope and character and includes grazing land, bushland, orchards, formal parkland, billabongs, etc, etc. There are some large expanses of parkland such as Westerfolds and in other areas there are narrow linking strips along the river bank. In the Eltham area it includes the open red gum areas at Lower Plenty and bushland in the "Laughing Waters" area.

Ross Young is a senior planner with the Board of Works with responsibility for the park. His talk about development and features of the park will be illustrated with slides. It will include special emphasis on historical aspects.

New members and visitors are most welcome to attend.

## DUNMOOCHIN TRIP

"Dunmoochin" was the home of the famous artist Clifton Pugh who died last year. The house also gives an informal name to the surrounding area at Cottles Bridge where artists, conservationists and like minded people have made their homes. This is an area of unconventional houses blending in with the surrounding bushland. The Pugh house is a rambling complex including studios and a large pottery kiln. It contains many of Clifton Pugh's works.

For this excursion we have arranged a guided visit of the Pugh house and hope to be able to visit another house in the area. We will also be able to wander through bushland which Clifton had purchased for conservation purposes.

This will be an afternoon excursion on Sunday 26th May starting with lunch (bring you own) at 12:30 pm at the Panton Hill Memorial Park. Transport will be by private car but transport can be arranged for those not wishing to drive. There is no cost but we need to be advised of members attending. Advise Russell Yeoman at the May Meeting or by 10th May if you intend to go. We will not be able to add extra people after that date.

## ANNUAL GENERAL MEETING:

As a result of the Annual General Meeting on 13th March there have been some alterations to responsibilities of office bearers and some new Committee Members. The Committee for 1991 comprises the following:

President	:	Sue Law
Senior Vice President	:	Opal Smith
Junior Vice President	:	Doug Orford
Secretary	:	Russell Yeoman
Treasurer	:	Gwen Orford
Membership Secretary	:	Joan Ackland
Committee Members	:	Jock Read; Blanche Shallard; Phyllis Macdonald; Mick Woiwod; Dorothy Markby

## SUBSCRIPTIONS:

1991 subscriptions are now due. If you did not pay at the Annual General Meeting please complete the attached form and return to the May meeting or the Society's post office box. There have been a number of recent increases in the cost of running the Society and we have had to increase subscriptions. We have no other regular source of funds and so prompt payment would be appreciated. Subscriptions have been fixed as follows:

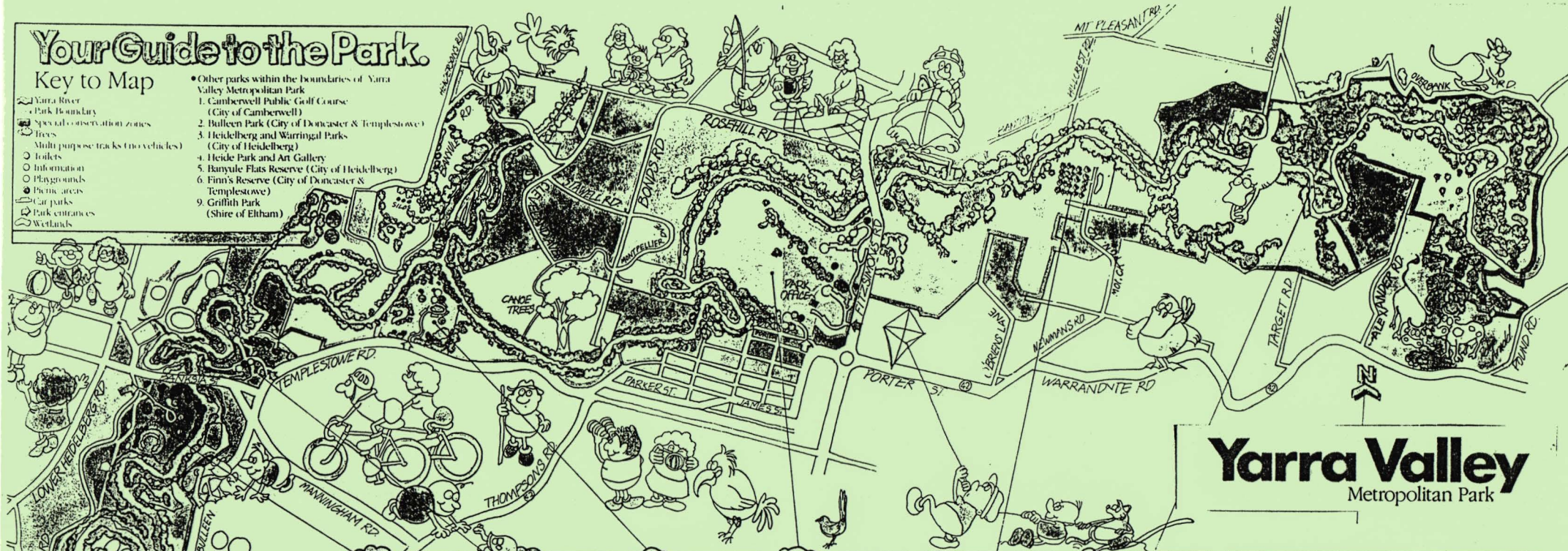
Adult	\$10.00
Family	\$15.00
Student	\$ 2.00

# Your Guide to the Park.

## Key to Map

- Yarra River
- Park Boundary
- Special observation zones
- Trees
- Multi purpose tracks (no vehicles)
- Toilets
- Information
- Playgrounds
- Picnic areas
- Car parks
- Park entrances
- Wetlands

- Other parks within the boundaries of Yarra Valley Metropolitan Park
  1. Camberwell Public Golf Course (City of Camberwell)
  2. Bulleen Park (City of Doncaster & Templestowe)
  3. Heidelberg and Warrigal Parks (City of Heidelberg)
  4. Heide Park and Art Gallery (City of Heidelberg)
  5. Banyule Flats Reserve (City of Heidelberg)
  6. Finn's Reserve (City of Doncaster & Templestowe)
  9. Griffith Park (Shire of Eltham)



# Yarra Valley Metropolitan Park

### Yarra Flats

Cycling, jogging, picnicking, fishing, excellent view of the Yarra River and opportunities for birdwatching are a few of the attractions. At the northern end are limited picnic facilities and a wetland wildlife sanctuary. A 2.8 km track extends the full length of this park and links into the track network at Banksia.

### Banksia

A beautiful park with established trees, nearly three km of bitumen tracks for cyclists, joggers and walkers, a wetland with friendly native water birds, an history trail and four playgrounds. There are just a few of the things you can do in this park.

### Birrarrung

Large open areas for ball games, creative play and kite flying, two km of bitumen tracks for cycling, jogging and walking, wetlands and a colourful playground for toddlers. Limited picnic facilities and barbecues are available.

### Westerfolds

Magnificent views of the Yarra River, a fun and fitness trail, as well as 6.1 km of bitumen tracks, ample picnic facilities and two adventure playgrounds are some of the ingredients of this popular park. Westerfolds also boasts remnant bushland, wide open spaces, native grasslands and plenty of places to sit and relax. Park headquarters is located here (open weekdays).

### Past Land uses

A range of landscapes and agricultural activities are conserved in the park. These include an orchard, dairying and market gardens.

### Bush Freeways

The linear corridors of natural vegetation within the park provide important bush freeways and flyways which allow native animals and birds to move up and down the Yarra Valley. The north eastern extremity of the park links up with Warrandyte State Park.

## What Must I Know?

### Park Hours

The park opens at 10.00 am every day and closes to vehicles as follows:

- 4.00 pm weekdays outside daylight saving.
- 5.00 pm weekends, public holidays outside daylight saving.
- 8.00 pm during daylight saving.

Please note: Yarra Flats and Birrarrung close 1 hour earlier during daylight saving and weekends.

### Group Permits

Groups of more than 20 people require a permit. Permits for the busiest periods (November and December) will be issued each year from 1 March.

### Special Programs

During school holidays the park staff run night walks, nature strolls and special programs for families. In the non-daylight saving period, the park staff run 'night discovery walks' for groups of up to 25 people.

### Visitors with Disabilities

Access to the parks is generally very good. The terrain along the river is flat to undulating, the toilets accessible and ample car parking is available.

### Public Transport

Ring the Transport Information Centre - 602 9011.

### Picnics and Barbecues

You supply the food we supply the wood, tables and barbecues. Visitors are welcome to BYO barbecues and fuel.

### Horse Riding

Permits are essential and can be obtained from the park headquarters.

## Looking after the park

- Please help us to look after the park by:
- Keeping your dogs and cats on a leash.
  - Keeping vehicles on the roads and in car parks only.
  - Protecting native plants and animals.
  - Using rubbish bin provided or taking your rubbish home.

## Park Attractions and Facilities

	Area (ha)	Car Parking	Toilets	Barbecues	Picnic Tables	Drinking Fountains	Playgrounds	Multi-purpose Tracks (km)	Seats	Information	Park Headquarters	Canoe Ramp	Wetlands	Views	Bird Watching	Fishing	Horse Riding	Kite Flying	Holiday Activities	Disabled Access	Nature Walks	Bike Hire	
Birrarrung	33	●	●	●	●	●	●	2	●	●	●	●	●	●	●	●	●	●	●	●	●	●	●
Banksia	23	●	●	●	●	●	●	3	●	●	●	●	●	●	●	●	●	●	●	●	●	●	●
Westerfolds	123	●	●	●	●	●	●	6.1	●	●	●	●	●	●	●	●	●	●	●	●	●	●	●
Yarra Flats	69	●	●	●	●	●	●	2.8	●	●	●	●	●	●	●	●	●	●	●	●	●	●	●

### Visitors with Disabilities

Access to the parks is generally very good. The terrain along the river is flat to undulating, the toilets accessible and ample car parking is available.

### Public Transport

Ring the Transport Information Centre - 602 9011.

### Picnics and Barbecues

You supply the food we supply the wood, tables and barbecues. Visitors are welcome to BYO barbecues and fuel.

### Horse Riding

Permits are essential and can be obtained from the park headquarters.

### NEIL BLAIR:

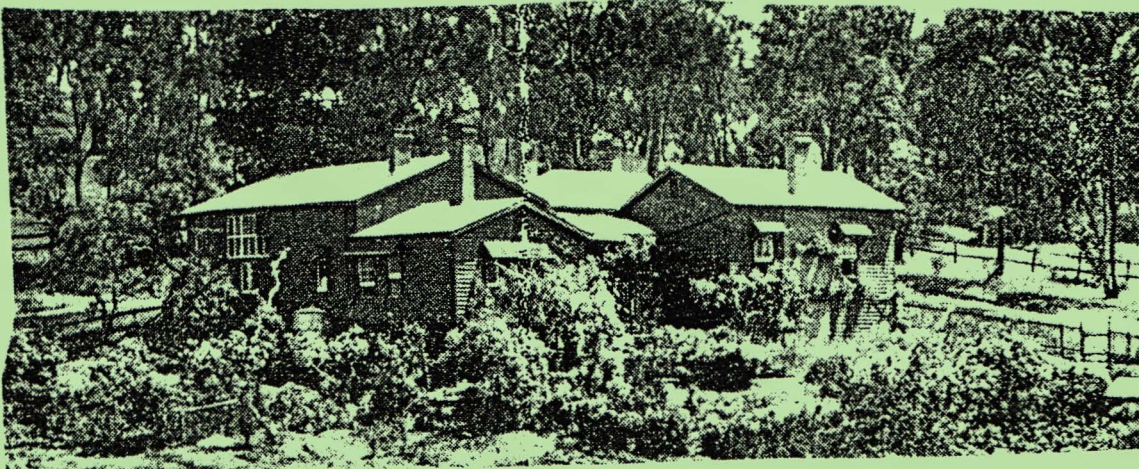
Sadly we have to report the recent death of Neil Blair after a long battle with cancer. Although Neil did not live in Eltham he maintained a strong interest in the area and was a member of the Society for many years. For a significant part of that time he contributed to the Society as a member of the Committee and was a Vice-President over the last few years. He was also our Public Officer for the purpose of Society incorporation. Neil's friendly presence will be missed at our meetings and excursions. Our sympathies go to his wife Doree and son Christopher.

### SHIRE HERITAGE STUDY:

A major heritage study of the Shire of Eltham is to commence this month and will take about a year to complete. The study will be funded partly by the Council and partly by a grant from National Estate funds. A steering committee has been established and the Society is represented by Russell Yeoman. A large field of well qualified consultants has expressed interest in the study and the selection of the consultant is well advanced.

The purpose of the study is to identify buildings, places, landscapes, etc. which are of importance because of their historical, architectural, archaeological, scientific or aesthetic interest. It will include a brief history of the Shire and a statement of significance for each place identified. It will include recommendations for protection of those places depending on their significance. This could range from inclusion in the Historic Buildings Register and the Register of the National Estate where State significance is specified, to protection by local planning controls for places of local significance.

A large amount of information from Society records can be made available to the consultants. However, if members have information on lesser known aspects of our history or places which they think should be included they are encouraged to submit that information for consideration.



Southernwood — the Withers' Eltham home, c. 1910.

PLANNING CONTROLS -  
HISTORIC BUILDINGS AND SIGNIFICANT TREES:

The Shire of Eltham has introduced controls into its planning scheme to protect sites of architectural, historic or conservation interest and significant trees. The controls have recently been approved by the Minister for Planning and Housing and are now in operation. A planning permit is required to demolish or alter any listed building or to destroy, lop or remove any listed tree. Provision is made for comments to be obtained from the National Trust or Historic Buildings Council in considering any applications.

The lists at present are by no means exhaustive and further places and trees will be added in the future. The Heritage Study reported elsewhere in this Newsletter should result in a substantially complete list.

The buildings and trees currently listed are:

Buildings:

250 Bolton Street Eltham (former Walter Withers home)

"Rosehill" - Bonds Road Lower Plenty

St Andrews Church of England - St Andrews

"Montsalvat" - Hillcrest Avenue Eltham

St Margarets Church and former vicarage - Pitt Street  
Eltham

Presbyterian Church - Kangaroo Ground

Parks and Environment Office (former police quarters)  
Main Road Eltham

Former Court House - Main Road Eltham

"Shillinglaw Cottage" - Main Road Eltham

"The Robins" - Kangaroo Ground Road Warrandyte

Trees:

"Donaldsons Oak" - Donaldsons Road Kangaroo Ground

Yellow Box - Laughing Waters Road Eltham

Yellow Box - Arthurs Creek Road Hurstbridge

Wippells Oak - St Andrews Road Kangaroo Road

Pines and Cedar - Hurst family cemetery

Greys Harps Road Hurstbridge

Yellow Box - Parsons Road Eltham

A large Blue Gum at Panton Hill has been listed but has recently died.

"Sweeneys" - Sweeneys Lane Eltham is proposed to be included but it has not yet been gazetted.



ROSEHILL, LOWER PLENTY AS SEEN BY  
GRAHAM HAWLEY IN DIAMOND VALLEY SKETCH BOOK

## OTHER SOCIETY NEWS:

At the Annual General Meeting Max Spence spoke of a lifetime in the Briar Hill and Montmorency area commencing with his childhood days in a two roomed shack in Briar Hill in the 1920's. Of particular interest were his descriptions of the local sites of many of his boyhood activities. He went on to talk about the many organizations he became involved with including the Montmorency R.S.L., the West Riding Tenants and Ratepayers Association, ultimately leading to his election as a Shire Councillor. Max has now retired and pursues his hobby of painting with the Diamond Valley Arts Society.

The theme for this year's Heritage Week was "Water and Wetlands" and this presented opportunities for a particularly wide variety of activities by organizations all over Victoria. Subjects ranged from natural history to bridges to sewers. Our display in the Eltham Library on the history of the Maroondah Aqueduct attracted considerable interest. A small group of people enjoyed an 8 km walk along the abandoned section of the aqueduct at Research. Eltham Council organized a display of local bridges using some of the Society's material and some of the Shire's. Members of the Engineering Department are complimented for this well put together display.

Don't forget the 1991 Photo Project announced in the March Newsletter. At the end of the year we hope that each member will have a series of photos of everyday events or special events which have occurred during the year. But we don't want all the photos to be of things happening in November. Give the matter some thought now and dust off your camera ready for any unexpected shots.

A plaque has been unveiled at Brighton to commemorate the 150th anniversary of Henry Dendy's historic land purchase. The plaque is on the site of Dendy's well at the rear of Dendy Plaza in Well Street. Henry Dendy is famous as the founder of Brighton but later (in the 1850's and 60's) became a prominent figure in the early history of Eltham.

We have not forgotten the proposal to use the old residence at the Kangaroo Ground School as a Society headquarters. Whilst we have verbal assurances of approval we are waiting for written confirmation before commencing use of the building.

We have recently had a visit from Herbert Trodd from Eltham England who is in Australia to see members of his family. Bert is a founding member and former Chairperson of the Eltham Society. He was presented with a copy of "Walter Withers, The Forgotten Manuscripts" to take back to the Society. This book had been given to us by author Andrew Mackenzie for this purpose.

Russell Yeoman  
Secretary  
439-9717

Sue Law  
President  
439-9520

Joan Ackland  
Membership Secretary  
439-9750



# Shire of Eltham Historical Society

NEW MEMBERSHIP

RENEWAL

INCORPORATED

1991

NAME: \_\_\_\_\_

ADDRESS: \_\_\_\_\_

PHONE: HOME \_\_\_\_\_ BUSINESS \_\_\_\_\_

ADULT \$10.00  STUDENT \$2.00  FAMILY \$15.00

OTHER MEMBERS (For family membership)

\_\_\_\_\_  
\_\_\_\_\_

OCCUPATION: \_\_\_\_\_

OTHER INTERESTS/SKILLS \_\_\_\_\_

HISTORICAL SOCIETY INTERESTS:

HISTORY GENERALLY  LOCAL INTEREST  HISTORICAL RESEARCH

PEOPLE/SOCIAL HISTORY  PLACES/PHYSICAL HISTORY

HISTORICAL OBJECTS/ANTIQUES  SOCIAL/MEETING PEOPLE

OLD DOCUMENTS  PRESERVATION, BUILDINGS ETC.  MUSEUMS

NATURAL ENVIRONMENT  INTER-SOCIETY ACTIVITIES  EDUCATION

TOURS, OTHER AREAS  WRITING  SPEAKING

OTHER (Please specify): \_\_\_\_\_

Please tick appropriate squares.

Send with subscription to Eltham Historical Society  
P.O. Box 137  
ELTHAM 3095