

**NEWSLETTER**  
NO. 88 JANUARY, 1993

# Shire of Eltham Historical Society

INCORPORATED

P.O. BOX 137 ELTHAM VICTORIA 3095

## NEXT MEETING

**8 P.M. WEDNESDAY, 10 FEBRUARY, 1993**

**ELTHAM SENIOR CITIZENS' CENTRE**

**MAIN ROAD, ELTHAM**

**(ENTER FROM SHIRE OFFICE DRIVEWAY)**

**SUBJECT: SHIRE HERITAGE STUDY**

### FEBRUARY MEETING:

The Heritage Study of the Shire of Eltham has now been in the course of preparation for about eighteen months - somewhat longer than expected. The study team is led by conservation architect David Bick. It includes historian Carlotta Kellaway also Ken Wallace and John Patrick who have covered gardens, significant trees and cultural landscapes. They have now produced a draft of the study report which comprises about one thousand pages and includes recommendations regarding more than two hundred and fifty places. It includes many surprises. Who would have thought that planning scheme protection was required for a cast iron drinking fountain in Montmorency Park (1957) or Heja Cheong's Pizan style pottery kiln built in 1984 at "Dunmoochin". Of course the traditional heritage places associated with our pioneers are included. As expected the study also deals with many places associated with local artists and the environmental building movement.

The proposal for this meeting is to break the draft report into a number of small sections so that members can each read or skim through one or more sections. Provision will be made for members to make comment on corrections but if you just want to read for information or pleasure that's OK. The format will be quite flexible and there will be opportunities for group discussions if that is how members want to do it.

Comments received from this meeting, together with those of the study steering committee, will assist in preparation of the final study report.

## ANNUAL GENERAL MEETING:

To satisfy the requirements of the Society's rules, notice is hereby given that the Annual General Meeting of the Shire of Eltham Historical Society Incorporated will be held at 8:00 pm on Wednesday 10th March 1993 in the Eltham Senior Citizens' Centre.

Whilst further details will be given in the March Newsletter, the Agenda of the Annual General Meeting is set out below in accordance with the rules:

1. Apologies
2. Minutes of 1992 Annual General Meeting
3. Annual Reports:
  - a. President's Report
  - b. Secretary's Report
  - c. Treasurer's Report
  - d. Other Reports
4. Statement by the Society in accordance with Section 30 (3) of the Associations Incorporation Act 1981.
5. Election of office bearers and ordinary members of committee. Positions to be filled are as follows:  
President  
Senior Vice President  
Junior Vice President  
Treasurer/Membership Secretary  
Secretary  
Ordinary Committee Members  
(not less than three and not more than six)
6. Fixing of entrance fee (if any) and annual subscription
7. Any other business of which at least two weeks notice has been given to members.

It should be noted that under the Society's rules nominations of office bearers should be made in writing to the Secretary not less than seven days before the meeting. Nominations should be signed by two members of the Society and accompanied by the written consent of the candidate. If insufficient nominations are received further nominations shall be received at the meeting. However, it should be noted that where a valid prior nomination is received it will have priority and no nomination for that position can be accepted at the meeting.

## 1993 - WHAT'S HAPPENING?:

The Committee is currently preparing a programme of Society activities for this year to be sent out with the next Newsletter. So far we have filled in a few of the blank spaces but we would like to hear any suggestions from members. Talk to a Committee member if you have any ideas for meetings, trips or any other activities.



### KATH STEPHENSON:

With regret we report the death in December of Kath Stephenson, President of our Society between 1980 and 1985.

Kath lived the last few years of her life in nursing homes away from Eltham but really enjoyed the rare times when she could come back to be with her friends. One such occasion was our 25th Anniversary Dinner in July 1992 and members who attended will remember the pleasure Kath showed on that evening.

Kath was born at Rockhampton Queensland in 1912. She spent her childhood there then trained and worked as a nurse. However, the job she gained the most pleasure from was teaching which she started much later in life. In the meantime she had married Clarrie, shifted to Eltham where they ran a poultry farm and raised a family. Kath is fondly remembered by students and staff of Eltham High School where she started teaching in 1957. She was a member of St Margaret's Church for more than thirty years. Many of the important things in Kath's life came in her later years. She obtained her driving licence at the age of 60 and it is a tribute to her persistence that she won it after seven tries.

On behalf of the Society our sympathy has been passed on to Kath's family.

### VICTORIAN HERITAGE FESTIVAL:

This year the Victorian Heritage Festival will be held from 21st March to 4th April.

There are a number of local events planned and full details will be given in our next Newsletter. Our main effort will be concentrated on the Andrew Ross Schoolhouse Museum. There has been a great deal of work over recent weeks by the Museum Sub-Committee. Details of their work and their proposals for the opening of the Museum during the Heritage Festival are set out in the following articles.

Mick Woiwod explains the concept of the Open Day and Museum Opening. Wendy Bradley has produced an information sheet on members' involvement based on a briefing session a week before the opening. The Sub-Committee has produced a press release which has been adapted as an attachment to this Newsletter. This is a major Society activity and members are urged to become involved to the greatest extent possible.

We are helping the Eltham Library with arranging a talk on Tuesday 23rd March. This is a talk on Walter Withers by Andrew Mackenzie which fits well with the Edwardian theme of the Festival.

**LAUNCHING THE MUSEUM:**

**Mick Woiwod**

The Museum Sub-Committee is making progress towards the Society's objective of setting up the Andrew Ross Schoolhouse Museum in the school residence at Kangaroo Ground.

Until now the main problem has been to do with obtaining the necessary funds to proceed with the project. Last year the Committee made out extensive submissions for funding to both the Shire of Eltham and the Ministry for the Arts. Due to harsh economic times these requests for financial assistance have been only partially successful. Nevertheless, the Shire of Eltham through the offices of its riding councillors has seen its way clear to grant \$1,500.00 from its Riding Contingency Funds. This amount was added to by the Ministry for the Arts who granted \$2,000.00 for the setting up of displays.

The Committee proposes to immediately proceed with Stage 1 of the facility. It will be concentrating almost entirely with a permanent display in just one room of the Museum. In it the theme will be Andrew Ross - Who Was He? All being well it is hoped to have the display complete by Saturday 27th March 1993. On that Saturday during the Victorian Heritage Festival, the Society will be launching its publication "The Reminiscences of Andrew Ross". It will be a big day for the Society.

Apart from the opening of the Museum and the launch of the book, a Photographic Reproduction Project will be under way in the adjoining old original classroom of the School. This will be widely publicised in the media. Members are encouraged to contact anyone they know who might have photos of historical interest and have them bring them along on the day. These photos need not be of any great age although anything relating to the early period would be invaluable.

It is expected that every member of the Society makes an effort to participate in this one big day of the year as the future success of the entire project depends upon the project getting off to a really good start.

**Contacts:**

Wendy Bradley	Diana Bassett-Smith
712 0396	712 0260
Doug Orford	Mick Woiwod
439- 8642	712 0563



WORKING AT THE MUSEUM:

Wendy Bradley

OPEN DAY - VICTORIAN HERITAGE FESTIVAL

SATURDAY 27TH MARCH 1993

VOLUNTEERS REQUIRED FOR THIS DAY

THERE WILL BE A BRIEFING SESSION FOR ALL VOLUNTEERS AT THE SCHOOL AT 2.00 PM ON SATURDAY 20TH MARCH 1993.

TRANSPORT FROM ELTHAM CAN BE ARRANGED IF REQUIRED.

HOST/HOSTESSES TO VISITORS:

MEET, GREET, GIVE INFORMATION, PROVIDE ASSISTANCE IN SCHOOLROOM WHERE PHOTOS AND DOCUMENTS WILL BE COPIED AND THE BOOK LAUNCHED.

GUIDES:

TAKE THE PUBLIC THROUGH THE MUSEUM, GIVE INFORMATION AND EXPLAIN THE ROLES REQUIRED OF THOSE MEMBERS OF THE PUBLIC WILLING TO VOLUNTEER THEIR LABOUR TOWARDS THE FUTURE RUNNING OF THE MUSEUM

DATA COLLECTION:

FILL IN DATA SHEETS FOR PHOTOS AND DOCUMENTS, SEEK INFORMATION FROM DONORS

AFTERNOON TEAS:

ORGANISE AFTERNOON TEAS, COOK SCONES, CAKES, SERVE AFTERNOON TEA, WASH UP

SALES:

SELL COPIES OF THE PUBLICATION THE REMINISCENCES OF ANDREW ROSS

MEMBERSHIP:

BE PREPARED TO ENROL PROSPECTIVE MEMBERS

Contact: Wendy Bradley - 712 0396

Russell Yeoman  
Secretary  
439 9717

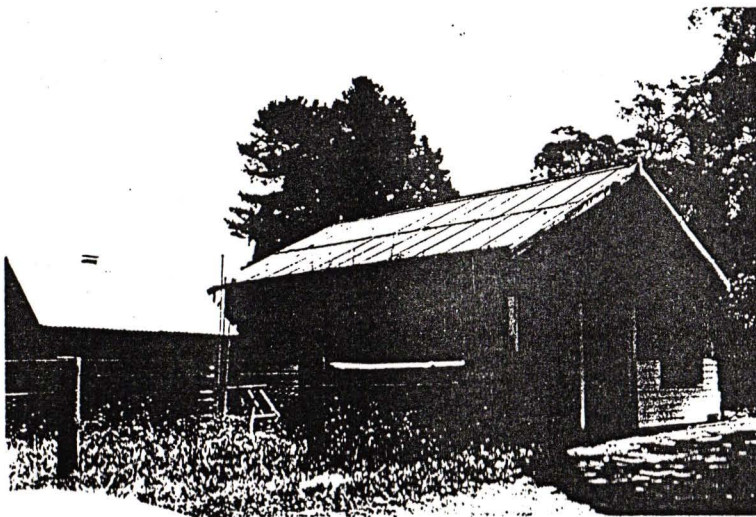
Sue Law  
President  
439 9520

Gwen Orford  
Treasurer  
439 8642



SHOP, ADJACENT SHED AND RESIDENCE,  
WHITTLESEA-KINGLAKE ROAD,  
KINGLAKE.

BUILT: 1920S?  
THEMES ILLUSTRATED BY THIS PLACE: TOWNSHIP DEVELOPMENT  
DEGREE OF SIGNIFICANCE: LOCAL SIGNIFICANCE  
EXTENT OF SIGNIFICANCE: ALL OF ALL THREE BUILDINGS  
AND SITE  
RECOMMENDATIONS: LOCAL PLANNING PROTECTION



CULTURAL SIGNIFICANCE:

This shop is now the only pre-1940 shop remaining in Kinglake, the only other one, which was across the road in the Shire of Yea, having been demolished in 1991/1992. Early this century the hotel and small number of shops formed the centre of Kinglake, the heart of the local community. With their loss over time, the survivors become important and must be preserved and conserved so the present and future generations will have the benefit of seeing how Kinglake residents of the early 20th century lived. The store is also an old building, but it has been gutted and a new front section added.

Shop, Adjacent Shed and Residence Cont.

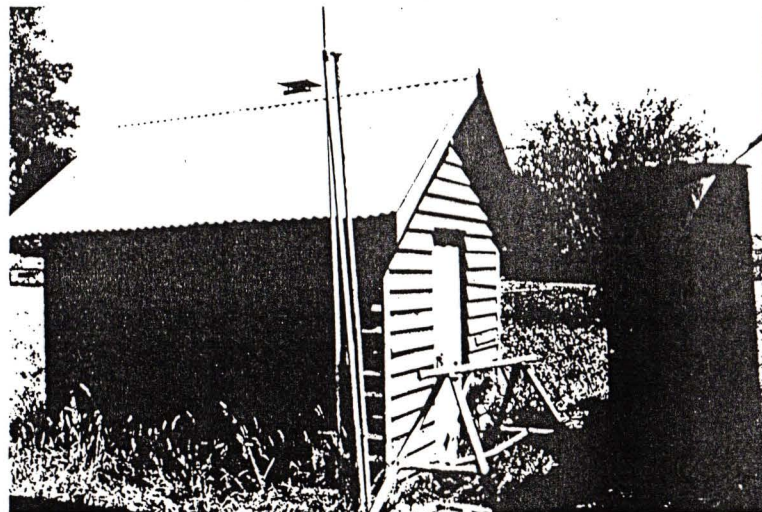
The shop is a single storeyed asbestos cement and weatherboard clad structure with a gabled corrugated roof. A front verandah is set into one corner of the rectangular building plan. The front windows are apparently recent, but the remainder of the building is intact. The shed close by is a rectangular weatherboard clad building with a gabled corrugated roof. It is painted in an old paint colour. The adjacent house is constructed in the same materials as the shop and was presumably built at the same time.

DESCRIPTION:

Style 1920s.  
Design standard.  
Plans rectangular.  
Single storeyed.  
Walls timber stud construction, weatherboard and asbestos cement sheet clad.  
Roofs gabled with eaves, corrugated iron clad.  
Features are the standard designs of the buildings.

CONSERVATION GUIDELINES:

Regular maintenance as necessary. The shed needs repainting externally and the roof rainwater should be collected and taken away from the buildings.





# ANDREW ROSS SCHOOL HOUSE MUSEUM PROJECT

An exciting new museum for the Shire of Eltham

Launch of Museum and Community Day  
Saturday 27th March  
10.00am- 4.00pm

Kangaroo Ground Primary School

**The theme? Andrew Ross.** This Scottish Presbyterian was an outstanding character in the early history of the County of Evelyn. The first School Master in Kangaroo Ground (founding what was probably the first technical school in Victoria), the earliest registrar of birth deaths and marriages, the official census taker. He operated the first post office, the first general store, and the first pub in the township. He was a driving force behind the first newspaper in the area (*Evelyn Observer*), and a member of the first Roads Board (forerunner to Shire of Eltham).

The theme of the museum is Andrew Ross, and he will serve as a focus to tell the story of the history and development of the region and its people.

**Where? Kangaroo Ground School House - Kangaroo Ground Primary School, Eltham-St Andrews Road (Melways 271E11) .**

This is stage 1 of the proposed museum. This building has been declared of local and possible regional significance. It was built c.1880 to replace the original slab building that housed Andrew Ross and his family for two decades. Stage 2 and 3 will incorporate partial use of the School Room (c.1878), attached to the School House, and development of the surrounding grounds.

The township of Kangaroo Ground was central to the County of Evelyn district, a role it maintained until more recent times. The Shire offices were here until the mid 1930s and the newspaper for the district was printed here until well into this century.

**Who's involved? The Shire of Eltham Historical Society.** The Andrew Ross School House Museum sub-committee has already recruited enthusiastic volunteers to work on the planning stages. Local residents Mick Woivod (researcher and writer), Wendy Bradley (museologist) and Gary Patterson (architect and designer) have been busy discussing the museum with local and state government people. Already the Ministry of the Arts - Museum Unit and the Shire of Eltham have provided some initial funding. The Museum Studies Department, Deakin University are giving advice and assistance. Shire of Eltham councillors and local State parliamentarians are actively interested and supportive.

**When will it happen? Saturday March 27th.** It will be the major local feature of the **Victorian Heritage Festival 1993**. This will be the launch of the **Andrew Ross School House Museum, Stage 1** and the inaugural exhibition.

This community awareness day will also include the launch of a book *The Reminiscences of Andrew Ross*. This publication consists of a series of some 40 articles written by Andrew Ross in the 1880's and published in the *Evelyn Observer*. It documents the early history of what is now the Shire of Eltham.

People are invited to help build the Museum collection by bringing photographs and documents related to Andrew Ross, the School and Schoolhouse or related to the theme of Eltham and the arts. These will be copied on the day and returned immediately.

This will be an opportunity for everyone to take a guided tour through the Museum site, see and hear how the Museum is developing, find out how they can be a part of the Museum.



**What can you do?** We need people to register their interest in the Museum. We need people who are willing to offer assistance and expertise - a few hours, a few days or much more. Opportunities to develop new skills and interests will be provided.

Some skills and assistance we require include:

- # **cataloguing** Museum collection
- # setting up a **Friends Group** (to support the Museum)
- # developing a recruitment and training program for **volunteer workers**
- # setting up **legal and financial management** (including policy and procedures)
- # **grant applications** to government and philanthropic trusts.
- # developing a **marketing plan**
- # developing a **fund raising plan**
- # planning and organising **community days**.
- # photographic and document **copying**
- # **conservation and preservation** of existing collection.
- # developing a **computer needs plan**.
- # developing **educational policy and programs**.
- # constructing **display furniture**.
- # planning **exhibitions policy and programs**.
- # planning for **special needs groups**.
- # planning the **restoration of the garden**.
- # building **maintenance**.
- # acting as **host at the community day**.
- # organising **afternoon tea** at the community day
- # organising or taking part in **working bees**
- # photocopying, telephoning, **general assistance**

**This Museum is different...it is not just about one man, it is not just about Kangaroo Ground, it will have a permanent thematic exhibition linking Andrew Ross into the history of the Shire of Eltham. Temporary exhibitions will look at many and varied aspects of the Shire.**

**This Museum will provide the community and visitors with an opportunity to take part in historical research, explore the historical environment, assist in the development of exhibitions and activities. It will be a valuable addition to the Shire.**

**Contacts:**

**Wendy Bradley,  
Lot 6 Skyline Road,  
Kangaroo Ground, 3097  
712 0396**

**Mick Woiwod  
Gongflers Drive  
Kangaroo Ground, 3097  
712 0563**

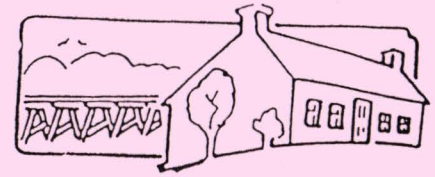


Visitors are most welcome at  
General Meetings.

Unless otherwise advised,  
General Meetings are held  
at the Senior Citizens'  
Clubrooms.

Any additions or alterations  
to this program will be  
advised in the Newsletter.

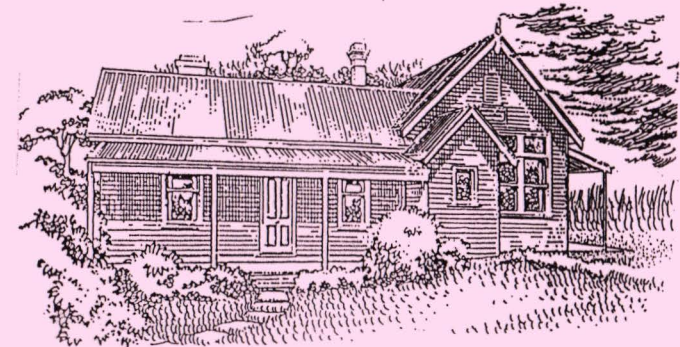
General Enquiries : Russell Yeoman  
: Phone : 439-9717



## Shire of Eltham Historical Society

Incorporated

P.O. Box 137, Eltham, Victoria, 3095



ANDREW ROSS SCHOOLHOUSE MUSEUM

# Programme 1993

1993

FEBRUARY

Wednesday 10th  
8.00 pm - General Meeting  
Discussion  
Shire Heritage Study

Thursday 18th  
8.00 pm - Committee Meeting

MARCH

Wednesday 10th  
8.00 pm - Annual General Meeting  
Election of Office Bearers  
and Committee Members  
Guest Speaker  
Grace Mitchell - "My Eltham"

Saturday 20th - Open Day  
2.00 pm Briefing

March 21st to Victorian  
April 4th Heritage  
Festival

Tuesday 23rd - Library Talk  
Andrew McKenzie  
"Walter Withers and  
Edwardian Eltham"

Saturday 27th - Andrew Ross  
10.00 am to Schoolhouse  
4.00 pm Museum Open Day

Sunday 28th  
2.00 - 5.00 pm "

APRIL

Saturday 3rd Open Days  
Sunday 4th Andrew Ross  
2.00 - 5.00 pm Schoolhouse  
Museum

Wednesday 14th  
8:00 pm - Committee Meeting

MAY

Wednesday 12th  
8.00 pm - General Meeting  
Guest Speaker  
Mick Woiwod - Christmas Hills

Sunday 23rd  
Local Excursion  
Shire Heritage Study

JUNE

Wednesday 9th  
8.00 pm Committee Meeting

JULY

Wednesday - 14th  
8.00 pm - General Meeting  
Guest Speakers  
Greg Burgess, Architect,  
Linda McConnell, Librarian  
and others:  
Eltham Libraries

AUGUST

Wednesday - 11th  
8.00 pm - Committee Meeting

SEPTEMBER

Wednesday - 8th  
6.30 pm Buffet Dinner  
8.00 pm Speaker Panel  
Local Craftspeople

OCTOBER

Sunday - 3rd  
Spring Excursion  
Maribyrnong River  
and  
Williamstown

Wednesday - 13th  
8.00 pm - Committee Meeting

NOVEMBER

Wednesday - 10th  
8.00 pm - General Meeting  
Regional Fauna Study

DECEMBER

Wednesday - 8th  
6.00 Buffet Tea  
Display by Members  
Old Toys, Games,  
Dolls, Children's Books

1994

FEBRUARY

Wednesday - 9th  
8.00 pm - General Meeting