



Eltham District  
Historical Society  
Incorporated  
PO Box 137, Eltham, Victoria 3095

NEWSLETTER  
No. 109 JULY 1996

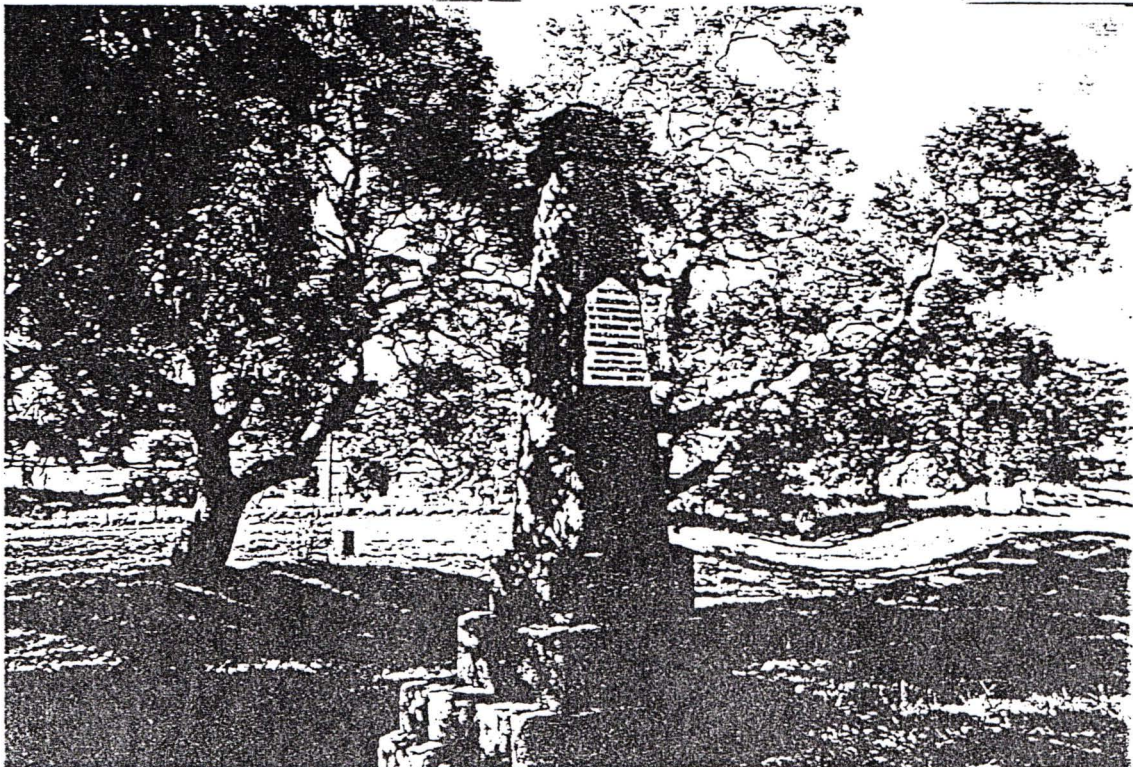
**NEXT MEETING**

**8 PM WEDNESDAY 10TH JULY 1996**

**ELTHAM SENIOR CITIZENS' CENTRE**

**MAIN ROAD ELTHAM  
(ENTER FROM OLD SHIRE OFFICE DRIVEWAY)**

**GUEST SPEAKER - GLEN TERRY**



ONE OF THE MANY H & H MEMORIALS.

## GUEST SPEAKER - GLEN TERRY

Glen will be known to some members. He has worked in the local environment for the past seven years. Firstly, with the Shire of Eltham, with various landscape and environment projects, and now with the Shire of Nillumbik where he is co-ordinating bushland and environmental projects throughout the Shire including the revegetation and restoration of the Diamond Creek waterway. He is also associated with the removal of noxious weeds from Council owned land. His talk will be supported by information using an overhead projector, a slide projector and large maps.

So turn off your heater and join us for a mid-winter evening about what you see - where you live.

## PRESIDENT'S REPORT

Our society has been requested by the Shire of Nillumbik to assist the Council in the naming of their electoral wards for future Council elections. We will be discussing this matter at the general meeting and would welcome your suggestions for inclusion in our recommendation to Council.

The previous North, Central and West Ridings are no longer applicable, nor are postal districts. So, landmarks and names (properties/people of last century) give us a large scope from which to select our ideas.

If people's names are to be discussed could I ask that thought be given to reflect the balance of gender in our community?

From the memorabilia joint task force (Banyule and Nillumbik) that Russell and I work with, there has been progress in locating nearly all of the 'brass plaques' which were inadvertently removed from their sites and which are now being put back. It is proposed that the Honour Boards which list the Road Board Members and Councillors of the Shire of Eltham are to hang beside the Councillor Boards of the Shire of Diamond Valley in an appropriate position in the Nillumbik Council Chambers.

Heidelberg Historical Society is to display the five mayoral robes, in a glass display case, which belonged to the City of Heidelberg.

Presidents' jewellery from Eltham and Diamond Valley Councils are proposed to be on permanent exhibition in theft proof display cases in the appropriate libraries.

**ON THE TRAIL OF HUME AND HOVELL**  
**BETTINA WOODBURN'S REPORT ON THE AUTUMN EXCURSION**

On a green and fresh morning (Sunday 26th May 1996) the Cobb and Co coach (driven by the most obliging Peter Tampion) set off in a north easterly direction from Eltham to connect with Hume and Hovell's route on their 1824 explorations of central Victoria.

The Society would follow a series of monuments erected for the 1924 centenary of the expedition from King Parrot Creek (Tuesday 7th December 1824), through Strath Creek, over Sunday Creek (Sunday 12th December 1824) at Broadford, Tullamarine, St Albans, Deer Park, through Werribee, skirting east of the You Yangs to Lara and Avalon Beach.

Because their distance-measuring wheel had broken and a one degree mistake was made in calculations, the two leaders of the original group of six convict-companions arrived at Corio Bay, instead of the expected Western Port, discovered earlier by Flinders.

From below Mt. Disappointment (Hume and Hovell's difficulties in "scrambling over brush and rock", "leeches in forest, as well as no water", "cutting grass 4-5 ft. high", dreadful scrub", "devil flies") we took an easier route, saw the Strath Creek memorial in ground fog and a wonderful "field of dreams", the Hume-Hovell privately owned cricket ground with its white picket boundary fence.

Now, after a steep climb, in sunshine under gums we stretched and viewed magnificent rolling hills and fog-filled valleys - not "smoke from Aborigine's bush fires". After morning tea at Broadford we followed the Sunday Creek valley beside the Hume Freeway, passed the Wallan Wallan Rest Area (more appropriately Hume and Hovell Rest Area) to turn right at Beveridge.

In Gellibrand Hill Park, near the headwaters of the Moonee Ponds Creek, we experienced the landscape the first European settlers saw - huge river red gums and rolling pastures.

The gardens and sheltered courtyard of the 1840's, timber, brought from Britain, prefabricated Woodlands Homestead provided a pleasant lunch stop. We enjoyed a private tour, panoramic views over Melbourne and surroundings and the excitement of arriving and departing aircraft.

Our next river crossing was at Werribee, "in a vast treeless plain", then we drove on by-ways no coach had previously travelled, to find "an immense sheet of water" salty Corio Bay, off-course to the west.

In late afternoon of a super, calm, late autumn day we headed homewards. Back at Eltham we were rather surprised to find that we had travelled a total of 347 km.

Thanks again to Russell Yeoman for his research and organization.

What a wonderful day!

Bettina Woodburn  
June 1996