

ELTHAM DISTRICT HISTORICAL SOCIETY

Incorporated

No. A0016285F

728 MAIN ROAD (PO BOX 137) ELTHAM 3095

NEWSLETTER NO. 132 MAY 2000

**NEXT MEETING
8-00 PM WEDNESDAY 10TH MAY**

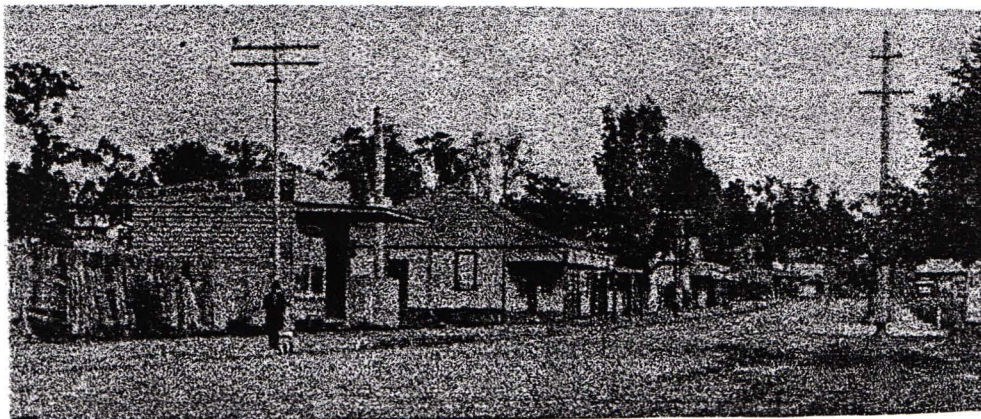
**SPEAKER PANEL:
THE TWENTIETH CENTURY AND BEYOND**

**ELTHAM SENIOR CITIZENS' CENTRE
MAIN ROAD ELTHAM
(ENTER FROM OLD SHIRE OFFICE DRIVEWAY)**

XXXXXXXXXXXXXXXXXXXXXXXXXXXX

**KANGAROO GROUND EXCURSION
2-00 PM SUNDAY 21st MAY
STARTS AT WAR MEMORIAL TOWER**

XXXXXXXXXXXXXXXXXXXXXXXXXXXX



Eltham in the early 20th century. Main Road near Pryor Street

OFFICE BEARERS, 2000

At the Annual General Meeting in March all members of last year's committee were re-appointed for a further year. Office bearers and committee members are:-

President	-	Harry Gilham
Senior Vice President	-	Margaret Ball
Junior Vice President	-	Doug Orford
Secretary	-	Russell Yeoman
Treasurer/Membership Secretary	-	Gwen Orford
Committee	-	Sue Law, Jock Read, Mary Regan Jo McCormick, Diana Bassett-Smith,

Contact numbers for principal office bearers are given at the end of the Newsletter.

SUBSCRIPTIONS 2000/2001

Subscriptions are set at the Annual General Meeting and are payable on 1st July. They may be paid in advance of that date and Gwen would be happy to accept them at the May meeting. They may be sent to our post office box or direct to Gwen Orford, 125 Napoleon Street Eltham 3095.

Subscriptions are as follows:-

Adults	-	\$12.50
Students	-	\$ 2.00
Family	-	\$17.50

SOCIETY ACTIVITIES

At the Annual General Meeting Bruce Nixon spoke of his long standing interest in Charles Joseph La Trobe which ultimately led to him publishing the magnificent book of La Trobe's landscapes and sketches. Two of the sketches which stimulated his interest were views across the Yarra Valley from what is now Bruce's property at Yarra Glen.

A small group of members continued our tour of the Heidelberg School Artists' Trail on 16th April, visiting locations in Templestowe and Eltham. We still have some way to go to complete the trail. Most participants far preferred the paintings featured on the trail signs to the more modern sculptures comprising Nillumbik's "Art in Public Places" programme.

Marjorie North has left her long time home in Montmorency. She has donated to the Society a framed picture of the barracks at Montmorency, France and a framed collection of newspaper cuttings regarding the connection between the two Montmorencys. Blanche Shallard presented these at the Annual General Meeting.

Russell Yeoman will speak at the AGM of the Friends and Relations of Queenstown Cemetery on Saturday 20th May.

Harry Gilham has accepted the position of Society representative on the board of management of the Andrew Ross Museum. Diana Bassett-Smith, Secretary to the Museum, remains on our Society Committee so that there is an excellent connection between the two bodies.

MAY MEETING - THE TWENTIETH CENTURY AND BEYOND

As indicated in our programme for 2000, we thought we should celebrate or commemorate the passing of the 20th century and the start of the new century. There are some who argue that the new century and millennium do not start until 2001 and in mathematical terms that may be correct. But there is no doubt that the 2000's have started, the 1900's referred to as the 20th century are history and deserve to be recognized as such.

We have assembled a panel of members to help us recognize this important historical milestone. They will cover the subject from their own experience or research.

The panel members are:-

- | | | |
|------------------------------|---|--|
| Russell Yeoman | - | An overview of the history of our area in the 1900's. |
| Diana Bassett-Smith | - | Anecdotes from Eltham and Kangaroo Ground. |
| Doug Orford and
Jock Read | - | A joint discussion mainly concentrating on local characters. |
| Harry Gilham | - | Beyond the 20th century - a look into the future in part based on the Nillumbik Council's 2020 document. |

The four talks will be brief, allowing time for others to further develop the theme from their own experiences or by questions.

KANGAROO GROUND EXCURSION

This excursion will visit three locations at Kangaroo Ground on the afternoon of Sunday 21st May. The programme is as follows:-

1. 2.00 pm meet at War Memorial Tower, Yarra Glen Road. Harry Gilham will give a brief talk on new and proposed improvements to this site and a general overview of its history.
2. Inspection of Kangaroo Ground Presbyterian Church
3. Visit to Andrew Ross Museum. The Museum is currently seeking accreditation and so all exhibits etc. will be in first class order. Afternoon tea will be available.

The intention for this excursion is that members travel independently to Kangaroo Ground by their own transport. If you need transport ring Harry or Russell. There is no charge and visitors from other societies or the public generally are most welcome.

PRESIDENT'S REPORT

Our 1999 Chronology, which contains 661 items, is in the process of being expanded to over 950 items for 2000. Sue Law is our typist/computer operator and will be able to add items until the end of May. Send material to Harry Gilham, 7 Leonard Crescent Eltham 3095.

The Eltham Library display case of this Historical Society has been displaying the earliest history of the Eltham Primary School No. 209. Records of students from 1863 to 1913 will be returned to our centre at 728 Main Road. See your 2000 program for general meetings, recording sessions, excursions and committee meetings for all activities of the Society.

Next library display will be proposals to refurbish the War Memorial Park and Tower of Remembrance at Kangaroo Ground. Join our May excursion to visit the Museum and Tower areas.

Harry Gilham.

Don't forget our records workshops at the Local History Centre, 728 Main Road Eltham. The numbers attending are small so we are making rather slow progress. We hope to soon be able to start on cataloguing on the computer which has been supplied to us by Nillumbik Council.

Workshop sessions for the next two months are:-

Mondays 9.30 am	15th May and 19th June
Tuesdays 7.30 pm	6th June and 4th July

MORE NEWSY ITEMS

The Andrew Ross Museum has commissioned a plaque for Donaldson's Oak, the historic tree at Kangaroo Ground. Adjoining landowner Keith Joslyn has provided a rock for mounting the plaque. Watch for the announcement of the unveiling date.

Parks Victoria which now is in charge of the Eltham Courthouse has called for expressions of interest for management and operation of the courthouse for some "self sustaining" operations. This building adjoining our Local History Centre is also on the Victorian Heritage Register and so any modifications would require a permit. The Society was not in a position to lodge an "expression of interest" for an operation which would clearly need to be financially viable. We will watch with interest for further developments.

The Society was advised by Nillumbik Council that it would consider proposals for siting of a new Eltham Police Station. Council owned sites under consideration were the former Eltham Shire Office site and the adjoining Eltham War Memorial site. The Society has an interest in the former site for its historic connections with Shillinglaw Cottage and the Shillinglaw trees which remain at the front of the site. The significance of the other site lies in the War Memorial group of buildings, largely paid for by public subscription. Harry Gilham made a submission to the Council on the historic significance of these sites. The Council has decided not to sell either site, preferring that another site be chosen for the obviously needed police station.

Advice has been received from the Department of Veterans Affairs of "The Great Search" for wartime memorabilia. The search is related to a proposed TV series "Australians at War" to be produced with Federal Government funding. More information is contained in a brochure obtainable from Russell Yeoman.

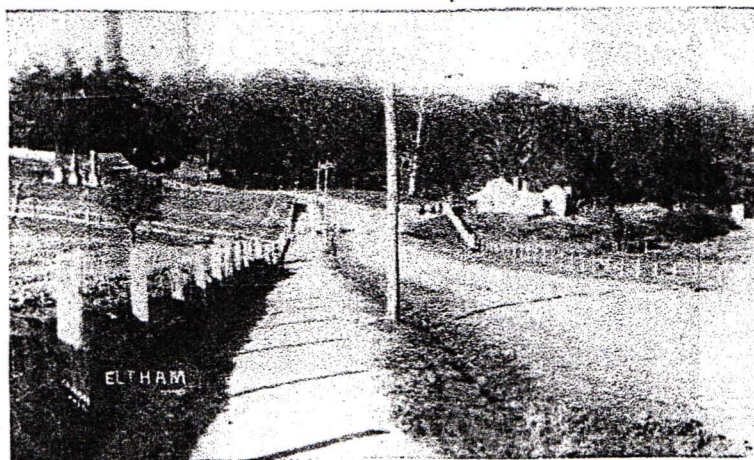
Harry Gilham
President

Russell Yeoman
Secretary

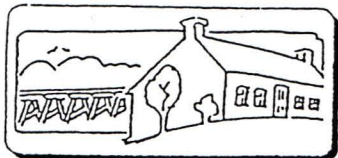
Gwen Orford
Treasurer /
Membership Secretary
Phone 9439 8642

Phone - 9439 1175

Phone - 9439 9717



Eltham in the early 20th century
Main Road south from Brougham Street



Eltham District Historical Society Incorporated

No A0016285F

Membership Application / Renewal

July 1st 2000 to June 30th 2001

Name

Address

Phone: Home: Business:

Adult \$12.50 Student \$ 2.00 Family/School \$ 17.50

Other member's names (for Family Membership)

.....

Cheques payable to **Eltham District Historical Society Incorporated.**

Please return completed membership form and payment to:
Gwen Orford, 125 Napoleon Street, ELTHAM 3095
or P.O. Box 137 Eltham, Victoria 3095

Eltham Local History Centre, 728 Main Road Eltham (corner of Brougham Street)