

# **ELTHAM DISTRICT HISTORICAL SOCIETY**

**Incorporated**

**No. A0016285F**

**728 MAIN ROAD (PO BOX 137) ELTHAM 3095**

## **NEWSLETTER**

**NO. 135 NOVEMBER 2000**

### **NEXT MEETING**

**8-00 PM WEDNESDAY 8<sup>TH</sup> NOVEMBER**

**GUEST SPEAKER LUCY ELLEM  
"THE PLENTY STATION"**

**ELTHAM SENIOR CITIZENS' CENTRE  
MAIN ROAD ELTHAM  
(ENTER FROM OLD SHIRE OFFICE DRIVEWAY)**



### **CHRISTMAS FUNCTION**

**6-30 PM WEDNESDAY 13<sup>TH</sup> DECEMBER**

**BYO BARBECUE**

**ELTHAM LOCAL HISTORY CENTRE  
728 MAIN ROAD**



R. Slagmollen

## NOVEMBER MEETING

Lucy Ellem is a senior lecturer in the Department of Art History at the La Trobe University. She has her home in the Plenty Valley and has a particular interest in the artists who have lived and painted in the area. She is Vice-president of Plenty Valley Arts.

Lucy will talk about "The Plenty Station" later "Yallambie Park", a property situated on the banks of the lower Plenty River in the suburb now known as Yallambie. The original owner was William Elliott but it was largely developed by John and Robert Bakewell who took it up in the early 1840's. The home has been recently restored to its former style but it is the gardens that are Lucy's special interest. They include a number of significant trees which extend into what is now parkland along the Plenty River.

The talk will be illustrated by Lucy's slides. Come along and enjoy the talk, bring some friends and stay for supper at the end. As at all of our meetings visitors are most welcome.

## CHRISTMAS BREAKUP

This function will follow the same format as last year. There will be a barbecue in the rear yard of our Local History Centre commencing at 6.30pm but come along at any stage of the evening if you can't make it at the beginning. Bring your own food to cook, perhaps some sweets and any drinks you need. Tea and coffee will be available and there will be a selection of Harry's home-made wines available for tasting.

This is a very informal evening with no organized lecture or other entertainment. However, at 7pm we do plan to officially launch the new sign identifying the Local History Centre.

The material in the Society's collection is available for perusal including our extensive and growing library of publications on local history and all sorts of other matters.

Harry is continually organizing and re-organizing displays in the centre for the various groups which he has visiting. There may be displays continuing on from the Eltham Festival or there may be something new but you can be sure that there will be interesting material on display to fill in the later part of the evening.

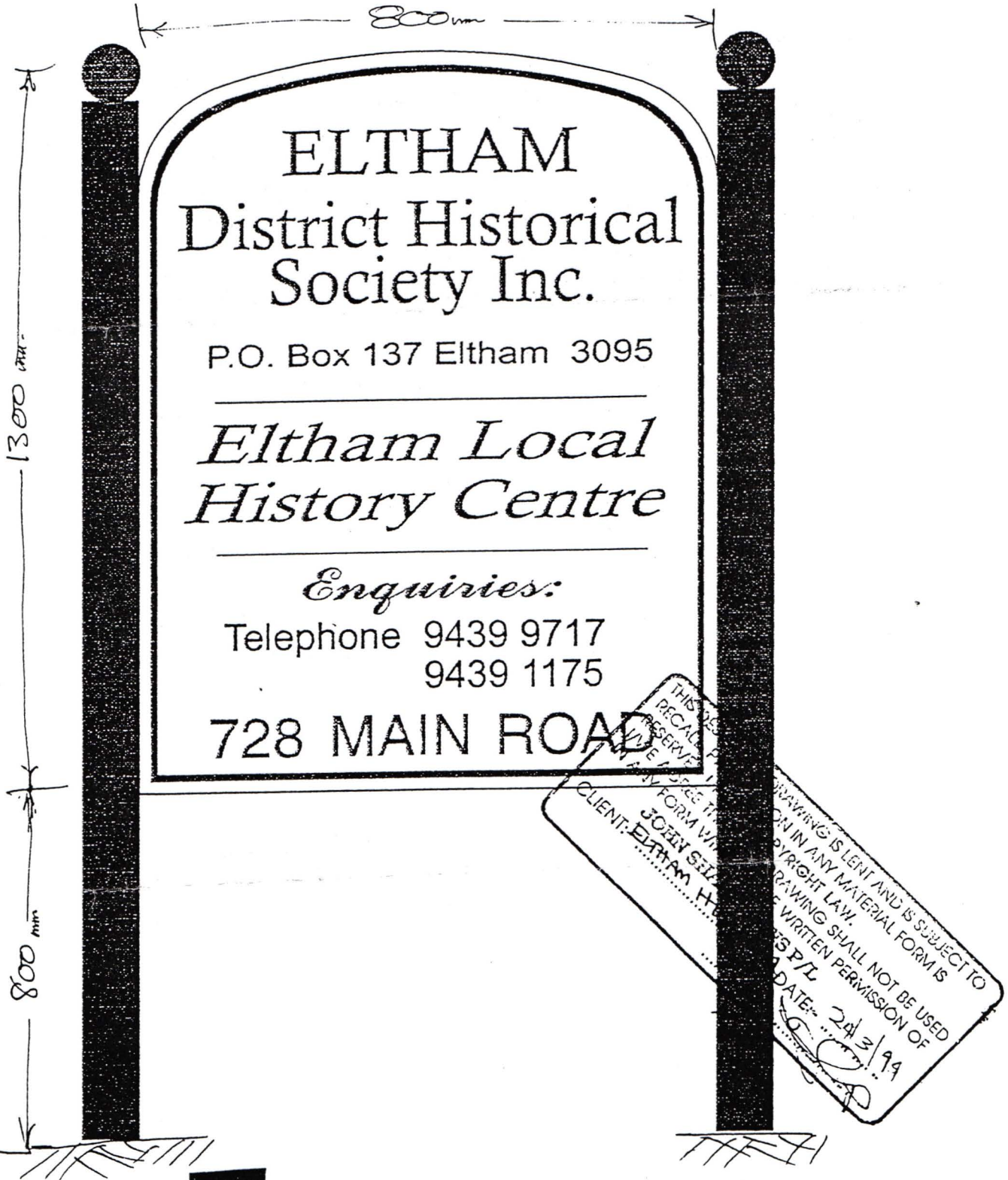
This is mainly a social get-together of members but if you would like to bring friends who share our common interests they would be most welcome.



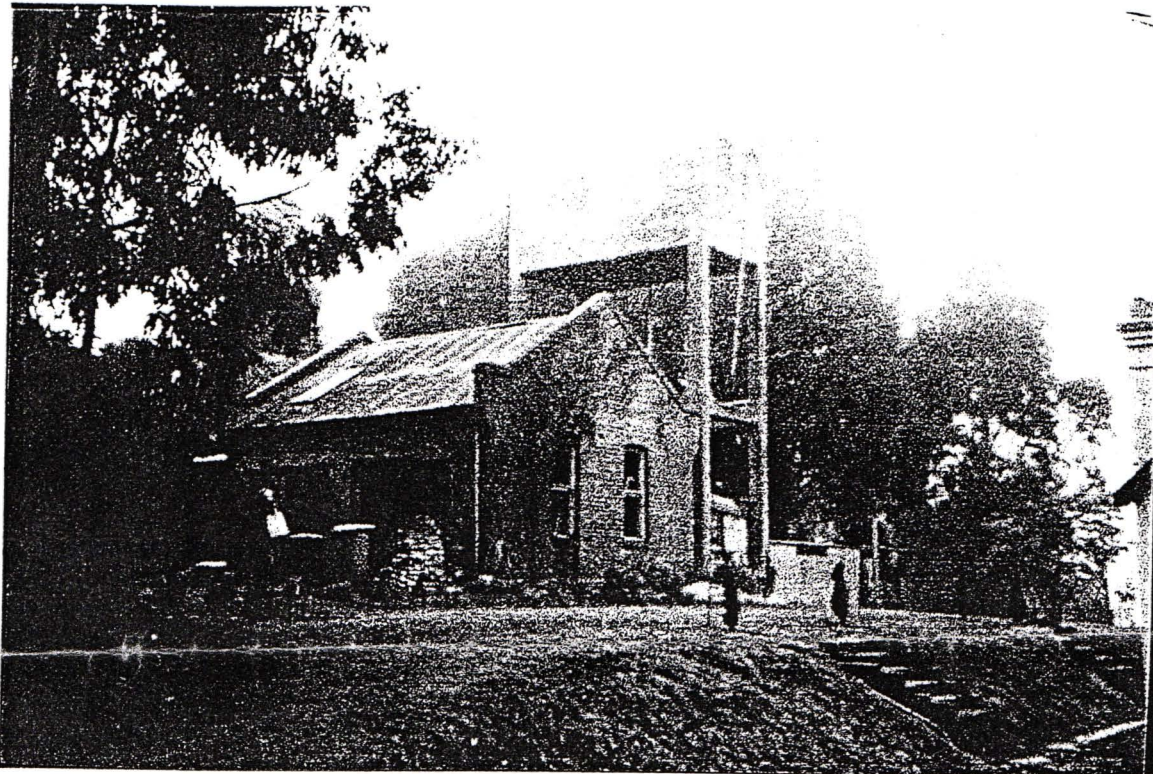
Hal Peck

THIS IS A:

Single sided sign (S.S.S.)



Working drawing of our new sign. You have to look at the real thing to see what is Actual Burgundy and Actual Green.



Water tank at Yallambie Park

### ELTHAM FESTIVAL

This year's Festival will be held mainly on the weekend of the 11<sup>th</sup> and 12<sup>th</sup> November and is based on the theme "Heart of the Arts". Other events will be held on the preceding days and the Artists' Open Studios on the following weekend (18<sup>th</sup> and 19<sup>th</sup>). We will be having an "Open House" at the Eltham Local History Centre from 1pm to 5pm on 11<sup>th</sup> and 12<sup>th</sup>. Please contact Harry if you can help with setting up of displays prior to this weekend.

The Festival programme has been distributed to local households. It includes many events which are likely to be of interest to our members. One which appears to be of special interest is the panel discussion of local artists entitled "Artistic Revelations" to be held at Montsalvat at 7.30pm on Thursday 9<sup>th</sup> November. Reg Evans will confront a panel of ten representatives of the various fields of the arts with a series of controversial and irreverent questions. Bookings for this event should be made on 9433 3127.

### UNVEILING OF A HERITAGE PLAQUE

The Donaldson's oak tree in Donaldsons Road, Kangaroo Ground, now has a stone cairn and plaque commemorating the tree's acorn beginnings from Windsor Park, England. It was collected by John and James Donaldson on their trip "back home" with Isabella and Margaret, John's daughters, in the 1870's.

John and his son, John Anstruther Davidson Donaldson who was then ten years of age, planted the Windsor Park acorns near the present Donaldson Road.

The tree is a fine memorial to the family who were the first purchasers (lot 19) in Kangaroo Ground. Their oak tree still casts a generous shade and is a fine symbol of how much the family shared their bounty with the growing community from their settling there in 1842.

The plaque was unveiled on Saturday 26<sup>th</sup> October by Bruce Nixon, President of the Kangaroo Ground Museum

## THE ELTHAM CONNECTION

Marion and Russell Yeoman have had a letter from Margaret Taylor of Eltham England which includes the following:-

"I think we may have found the answer to how/why your Eltham got its name ... the missing link at long last! John Kennett went on a tour of West Norwood cemetery with the 'Edith Nesbit Society' and his eye was accidentally drawn to a mention of John Edmond SCHLOTEL 1839-1905 who was buried in ELTHAM, VICTORIA. His mother was an Eltham girl.

Sophia (Sophie) Rowley 1802-1870 was the daughter of James Rowley of Eltham (U.K.) who was an assistant teacher and married to Ann, maiden surname Tyhurst. She had older brothers and sisters baptised in Eltham 1795-1801, namely Charity, Maria, Arthur Partridge, James Union and then Sophie, born 9<sup>th</sup> October and baptised 31<sup>st</sup> October 1802.

We have no idea where or when (not Eltham we think) but she apparently married Mr Charles Schlotel, who was possibly three years younger than herself. Their offspring included John Edmond SCHLOTEL 1839-1905 who was buried in your Eltham, Victoria.

Now it seems to me that SCHLOTEL is such an uncommon surname ... (though it may not be unusual in Austria/Germany or Switzerland, I suppose) ... that any researcher is in with a good chance of a breakthrough here. .

Can you or some other person in the Eltham Historical Society please look for John Edmond Schlotel 1839-1905 in your records? Is he buried at St Margarets or where? What was his job? When did he make the move to Australia? His mother and her parents and siblings were "OF ELTHAM" U.K. My fingers will be crossed until I get a reply."

This seemed like a bit of challenge to Marion who paid a visit to the Eltham Cemetery and almost immediately located the grave of Edmund John Schlotel who died on 12<sup>th</sup> May 1905 and was buried there on 14<sup>th</sup> May. The headstone says he was late of Brixton England. This is a double grave with no indication of who else is buried there. Cemetery records show that Elizabeth Schlotel was buried there in 1917. The records say that Edmund Schlotel came from Brighton England but a hand written version of Brixton or Brighton could easily be confused. Death records in the La Trobe Library record the death at Eltham in 1905 of Edward John Schlotel, son of Charles Bartholemew Schlotel and Sophia Ann Rowley. There appears to be nothing in the Evelyn Observer about Schlotel's death.

Marion's investigations are continuing. Another possible line of investigation is the Council rate records, now in the Public Records Office. Would anyone with further information please ring Marion on 9439 9717.

## SOCIETY NEWS

Our most recent activities have been the Personal Projects night in September and the October excursion to the Eltham Cemetery.

Harry Gilham had a pressing commitment and was unable to attend but he sent along his now humorous, once deadly serious, medical cuttings from early newspapers for reading by a variety of members.

The main project covered was Margaret Ball's photographic record of houses in the central part of Eltham. Margaret would appreciate assistance in documenting the history of the houses. This project has potential for expansion with the assistance of other members.

Gayle Blackwood spoke briefly on her Knox in Nillumbik project. She has since written thanking the Society for assistance but the application for Centenary of Federation funding was unsuccessful.

\* \* \* \* \*

There was a good attendance for our Eltham Cemetery excursion. Harry had done his research well and spoke on the history of the cemetery and a number of individual interesting graves. Other members spoke on graves of family members. Geoff Watt from the cemetery trust spoke on the newer section of the cemetery and the work of the trust.

\* \* \* \* \*

The records workshops at the Local History Centre are continuing but attendances are small. The last dates for the year are Monday 20<sup>th</sup> November at 9.30am and Tuesday 5<sup>th</sup> December at 7.30pm. They will continue in 2001 on Tuesday 6<sup>th</sup> February. Please come along on one or more of these dates if you can.

\* \* \* \* \*

Our Chronology of Known Local Events can be located on the internet under the Yarra Plenty Regional Library's local history section. Currently, Edition 1 is available but the recently published second edition is soon to replace it. It may be found at <http://www.yprl.vic.gov.au>.

\* \* \* \* \*

Under the auspices of our Society, Dennis Ward has applied to Parks Victoria for two Community Grants for projects at the War Memorial Tower, Kangaroo Ground. One is for tower restoration and one is for interpretive panels. Each is for \$15,000. Separate funding for other aspects of the refurbishment of this important site is being sought from Nillumbik Council.

\* \* \* \* \*

The Society has applied to Nillumbik Council for two community service grants – one for the operation of the Local History Centre which would otherwise be a significant drain on Society funds, and a community development grant for up-grading of the Society's records.

\* \* \* \* \*

Harry Gilham  
President

Russell Yeoman  
Secretary

Gwen Orford  
Treasurer/  
Membership Secretary

Phone – 9439 1175

Phone – 9439 9717

Phone – 9439 8642