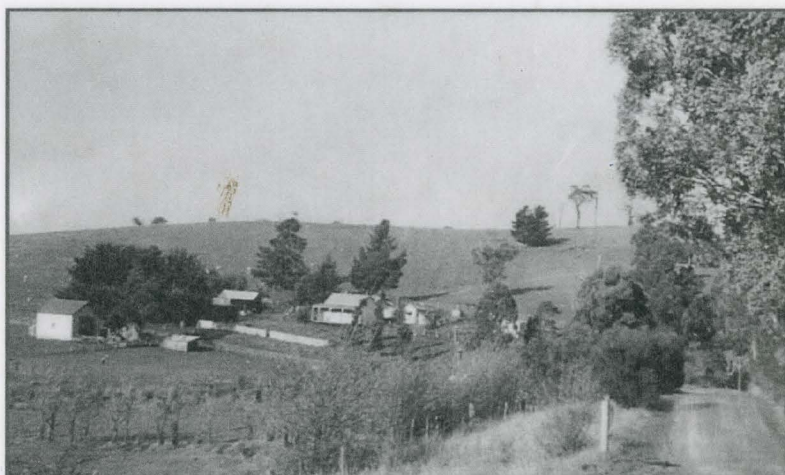


A diary of interesting events in the Macmillan family

Helena Ruth Macmillan



Volume 2

1929 - 1950

**AND
WORLD**

YARRA PLENTY REGIONAL LIBRARY



579135812d

**A diary of interesting events
in the Macmillan family**

**Helena Ruth Macmillan
(née Heatley)**

**Arthur's Creek
Victoria, Australia**

Volume 2

1929 – 1950

**Editors: Ross Macmillan
David Bollen**

2014

Preface

This volume is a sequel to Volume I, 1913 – 1929, published in 2012, and covers the remaining twenty-one years of the diary. For a sketch of Helena's life, as well as for editorial comment on the project, the reader is encouraged to consult Volume I. Here we follow the same conventions.

The two volumes, spanning thirty-seven years, tell one story. The division, which coincides with the end of Helena's first book and the start of a second, was for us essentially a matter of editorial convenience. The present volume draws on the 1929–1940 book and the third book, 1940 – November 1950.

The diary ends abruptly, without explanation, the last entries typical, no sign of winding down. A reflective, retrospective finale? – one may regret the lack yet the end is characteristic: matter of fact, detail, happenings, the focus sharp, the self on hold.

Helena stayed the distance and readers of the diary who do likewise will be rewarded. These thirty-seven years were tumultuous, book-ended by global wars, collapsed empires and emerging superpowers, with Australia both player and victim. On the economic front opportunity was offset by depression and war's distortions. Socially, the Macmillans' class of small-holders was under pressure. Likewise customary religious belief and observance. If Helena's was a pressured life – pressure which took a toll – it was partly because she exposed herself to the life of her times. And if a casualty, also a survivor – a brave upholder of things of value here and now, a faithful witness to things beyond.

As indicated in the Preface, Volume I, the manuscript volumes of the diary are to be lodged with the State Library of Victoria (which also holds the original manuscript material of *MacMillan Letters and other Records, 1846-1897*, ed David Bollen, 2011).

R H M

D B

July 2014

Arthurs Creek 'Back-to' 1938
Names and grid location for some people in photograph

PAGE	GRID	FAMILY	GIVEN
A	R5/6	Apted	Blanche
A	I11	Apted	Christina
A	L/M10/11	Barber ?	Elizabeth
A	C9	Brennan	Jack
C	H10/11	Brennan	Louey
B	J6/7	Brennan	Mick
A	L16/17	Brennan	Peirse
B	G10	Brown	Annie
A	H9/10	Brown	Dawn
A	D19	Cations	Alec (?)
C	G10	Cations	Cyril
B	P5/6	Christian	Harry
C	A16	Christian	Jack
C	B16/17	Christian	Les
A	K10	Christian	May
C	C/D10/11	Cleveland	Steve
B	P/Q14	Cracknell	Bell
B	Q/R14	Cracknell	Don
C	H8	Draper	Merv
A	E12	Everard	Billy
B	H14/5	Freeman	Fred
A	M13	Freeman	Lois
B	I4	Freeman	Robert
A	J16	Freeman	Shirley
C	H13/14	Green	Mary
C	E12	Green	Theresa
C	F12	Hepburn	Mary
A	P7/8	Hildebrand	Conrad
C	C8	Macmillan	Colin
B	R7/8	Macmillan	Hugh
C	C17	Macmillan	Ian
A	P/Q12	Macmillan	Ken
A	K10	Macmillan	Malcolm
B	N4	Marie	Eugene
A	E18	Marshall	Bill
B	B37	Marshall	Mrs
C	E/F8	McDonald	Billy
B	N11	McLeod	Brian
B	M6	McLeod	Ken

PAGE	RID	FAMILY	GIVEN
B	G7	Murphy	Ada
A	P5/6	Murphy	Bill
B	L10	Murphy	Brenda
A	P6/7	Murphy	Carolyn
A	I11	Murphy	Charlotte
A	O6	Murphy	David
B	P7	Murphy	Des'nd
B	D6	Murphy	George
A	R13	Murphy	Gordon
B	L4	Murphy	Jack
B	I7	Murphy	Jean
B	F12/13	Murphy	Jim
A	K12	Murphy	Matilda
B	P9	Murphy	Norman
C	C15	Murphy	Rita
B	K4/5	Murphy	Rosie
A	Q14	Murphy	Russell
B	N4/5	Murphy	Tom
B	H7	Murphy	Tom
B	J4	Murphy	Triss
C	B10	Powell	Alf
C	A10/11	Powell	Beryl(?)
A	R11	Schultz	Emily
A	I9/10	Shepherd	Doris
A	M13	Shepherd	Ron
A	H10	Shepherd	Stan Rev
C	D15	Sinliar	Audrey
A	G17/18	Smale	Charlie
C	I12/13	Smale	Jack
B	O8	Sutherland	Jack
A	O/P11/12	Sutherland	Violet
B	D12	Verso	Alan
A	L14	Verso	Beryl
C	C/D14/15	Verso	Gwen
A	O/P8	Verso	Lena
C	E10	Wilson	Ada
C	F10	Wilson	Tom

A B C D E F G H I J K L M N O P Q R

1
2
3
4
5
6
7
8
9
10
11
12
13
14
15
16
17
18
19
20

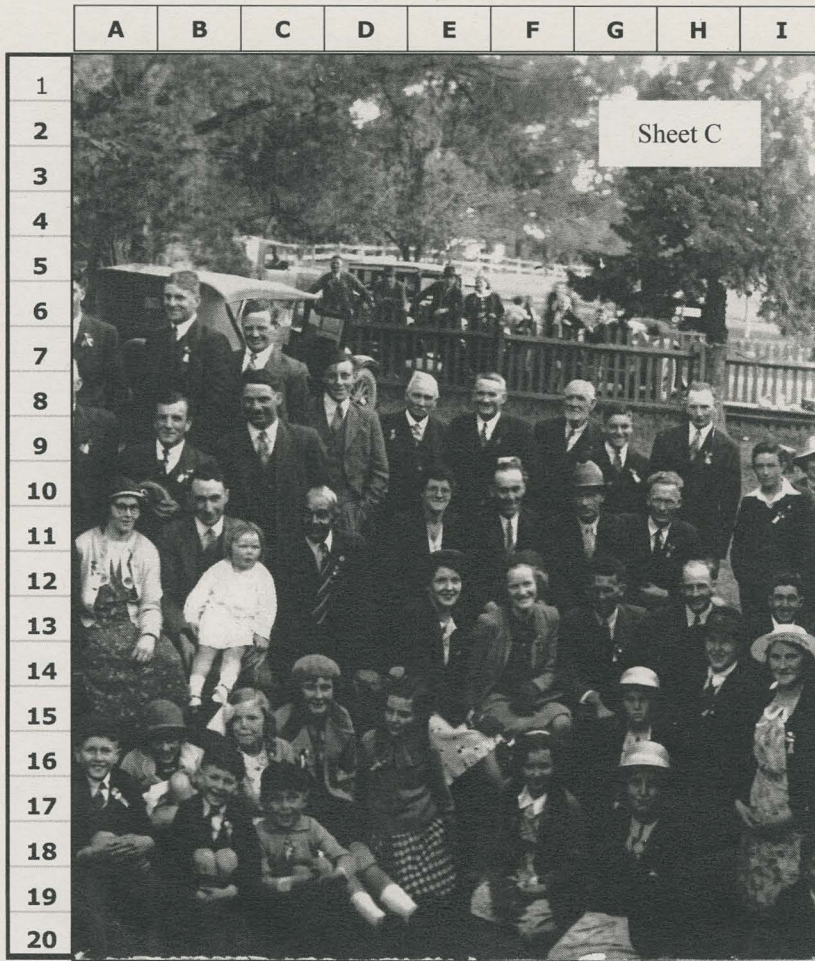


A B C D E F G H I J K L M N O P Q R

1
2
3
4
5
6
7
8
9
10
11
12
13
14
15
16
17
18
19
20



Sheet B



Arthurs Creek 'Back-to' - 1938
with grid for reference to names
of identified people