

INSIDE THIS ISSUE

2 COUNCIL/PROFILES

3 UPDATES

4 COMMUNITY

5 PROJECTS

6 ENVIRONMENT

8 ARTS

9 FESTIVAL

10 FEATURE

11 SUSTAINABLE LIVING

12 BUSINESS AND TOURISM

13 EVENTS

14 WORKS

15 IN BRIEF

16 EVENTS CONT'D

SAFER ROADS FOR THE SHIRE

Nillumbik Shire residents can look forward to safer local roads with Council receiving \$5000 in seed funding to begin work on a municipal road safety strategy.

Mayor Councillor Margaret Jennings said Council would match the funding on a dollar-for-dollar basis.

"This money enables us to take the first steps in developing a road safety strategy for Nillumbik", she said.

The launch of the Safer Roads Strategy took place at Nillumbik Council on September 14. VicRoads' Metropolitan North-West Region Program Delivery Manager, Frank Nolan, presented the \$5000 cheque to the Mayor.

"We want to involve the whole community in this highly important issue," said the Mayor. "In the coming months we will meet with local police, schools, community groups and trader groups to identify potential solutions to road safety problems."

"Council is absolutely committed to enhancing quality of life in our region and this includes providing safer roads."



Frank Nolan from VicRoads presents a cheque to Nillumbik Mayor, Cr Margaret Jennings, at the launch of Safer Roads.

Cr Jennings said the strategy will be specific to road safety issues within Nillumbik and will propose measures to address them.

"Council is looking forward to working with the community and the road safety agencies on this project, which we believe will bring positive results and improve local road safety."

The Safer Roads - Local Government Road Safety Initiative is supported by VicRoads, the Municipal Association of Victoria, Local Government Professionals the Transport Accident Commission, Victoria Police and the RACV.

Eltham Festival program announced

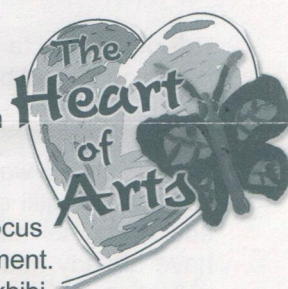
This year the Eltham Festival celebrates its 26th anniversary with an array of fantastic events held over three days and three sites in and around Eltham.

This year's event is titled "Eltham - Heart of Arts" and boasts an exciting line-up of local artists, performers and highly acclaimed bands. The Festival program (which appears on page 9) features reconciliation and sustainable living as themes in its program.

Among the highlights of the Festival are:

'Artistic Revelations' Forum at Montsalvat
Thursday 9 November 7.30pm - 9pm

The Eltham Festival gratefully acknowledges the support of Harvey World Travel in Eltham for its assistance with airfares for some of our entertainers.



Edendale Community Farm
Saturday 11 November
10am - 4pm

Edendale Farm will be the focus for fabulous family entertainment. The farm will host a range of exhibitions providing education, information, demonstrations and workshops on waste and energy minimisation and environmental sustainability.

Alistair Knox Park
Sunday 12 November 10am - 6pm

This year, the Eltham Festival at Alistair Knox Park will boast three areas of entertainment, over 100 market stalls, an array of rides and kid's entertainment as well as a selection of global food vendors.

CONTACT US:
CIVIC DRIVE
(PO BOX 476),
GREENSBOROUGH, 3088
PHONE (03) 9433 3111
FAX (03) 9432 9559



JOIN CR NEIL ROBERTS AT THE SUGARLOAF WARD MEETING IN WATTLE GLEN

Wednesday 25 October 2000
7.30 pm at the
Wattle Glen Pavilion
Wilson Road, Wattle Glen

Message from the Mayor

You have told us loud and clear that you have not been satisfied with the hard waste collection for the past two years - neither has Council!

We expected a prompt collection service and wanted the contractor to recycle most of the collected material. This simply did not happen. I am told of the 1000 or so tonnes of material collected, less than five per cent was actually diverted from land fill. This was also unacceptable.

In June this year, Council called for tenders, seeking a contractor who could combine a pick-up and recycling service. Unfortunately, there was no contractor able to provide either a combined service this year or a satisfactory service within budget.

Therefore, with such short timelines and many residents keen to have their annual spring clean out, Council will offer a service through its Works Depot in Plenty. For details of this service, please refer to the attached information brochure and keep an eye on the local papers.

I can tell you however, the service will work like this: Council will open the Yan Yean Road Depot in Plenty for six weekends starting in late October, and on Melbourne Cup Day. The Depot will receive car boot and trailer loads of hardwaste from residents. The same hard waste guidelines will apply as in previous years.

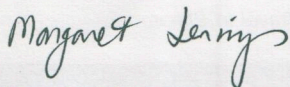
Council has engaged a service provider who will receive and sort the hard waste material and recycle it. We expect over 90 per cent of material to be recycled using this system, with significant environmental benefits.

Residents unable to get to the landfill or those unable to lift heavy goods will be offered a limited pick-up service. Please call us if you need further assistance.

Looking ahead, we would appreciate your suggestions on how Council can still offer a hard waste collection service, but educate ourselves to reduce the waste we discard annually. I have already had residents ask me to consider an at-call collection of a large wheelie bin. What do you think?

One idea to reduce the amount of hard waste is when purchasing a dishwasher or washing machine, ask the retailer to take back your old machine and any packing from the new machine. Many stores do this already. It is efficient for the recyclers to pick-up white goods from one location. I'm sure the customers appreciate not having to get rid of the old appliance.

Happy spring cleaning!

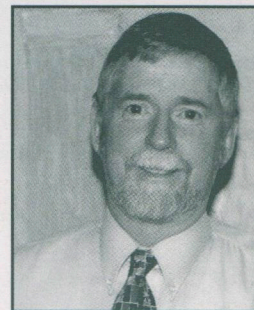


Margaret Jennings
Mayor



Maurice Stabb

'...helping the community to enjoy the amenity of their physical environment through the provision of infrastructure services that are in harmony with the environment and which preserve Council's assets'



Nillumbik's new Group Manager Infrastructure Services, Maurice Stabb, brings to Council almost twenty-seven years experience in local government, including extensive experience in senior and executive management.

Maurice's roles over the last decade include Director's roles at Brimbank in Organisation Planning and Governance, Operations and Physical Services, and prior to that, Manager Engineering Services at Keilor. He holds an MBA, a Graduate Diploma in Municipal Engineering and a Diploma in Civil Engineering.

Maurice says he is keen to meet the challenges of this new position that includes responsibility for the development and maintenance of Council's infrastructure, emergency management and municipal laws.

"The commitment the community has to its environment will demand innovation as we strive to continuously improve the infrastructure services we provide to the community", he says.

"We must also ensure that we deliver these services efficiently while providing value for money."

Lesley Shuttleworth

'...helping people live and learn'

As coordinator of the Living and Learning Centres in Eltham and Panton Hill, Lesley Shuttleworth thinks she has the best job in Nillumbik.



"Besides working in a glorious setting, I enjoy being able to contribute to the community by creating opportunities for people to realise their potential through affordable and accessible community education", she says.

As well as being a registered provider for TAFE courses, Council's Living and Learning Centres run broad-based adult learning programs.

The Centres provide opportunities to learn new skills, acquire knowledge and information, explore creative potential and develop social networks. Courses are fee based but are subsidised by Council and Adult Community and Further Education.

Lesley works with a committee of community members to develop policy and undertake strategic and program planning. She is responsible for the preparation of funding submissions; supervision of the planning and delivery of programs and manages all support staff and tutors.

Updates...

Commercial Place design released

A DESIGN FOR ELTHAM

An exciting new design for a community space in the Commercial Place precinct in Eltham has been released by Nillumbik Council. The design has been developed for Council by noted landscape designer Robert Boyle in conjunction with a Commercial Place Reference Group comprising Eltham traders, Nillumbik Councillors, and disability, youth and arts representatives.

The proposed design, which covers an area approximately 50 metres by 25 metres between Arthur and Pryor Streets, will create a native bushland environment familiar to Eltham and unique to Melbourne.

The design will complement and enhance the vibrant commercial activities of Eltham's shops, cafés and offices, and will create small and large spaces for people to meet, talk and rest. An amphitheatre provides the opportunity to host a variety of performances and displays.

The site will feature masses of vegetation, rocky outcrops, water features and art work by local well-known artists, as well as a tree canopy of Candlebark Gums and Red Box, creating a distinctly natural space integrating and softening adjacent structures and providing shade.

ACCESS

- The plan creates a peoples' space in Eltham with wide footpaths and gentle ramps providing ease of movement for all visitors, including people with disabilities
- The plan maintains vehicular access between Arthur and Pryor Streets and two-way entry to car parking from both streets
- A double queuing lane at the bottle shop will ensure capacity during peak times
- Landscape areas have been carefully designed to maintain sightlines through to public areas and shops

CAR PARKING

In addition to 145 upper and 135 lower level car parking spaces provided by the Safeway development, the plan provides 15 car parking spaces close to Commercial Place plus seven shared short-term parking/loading areas. This is 80 more spaces than were available prior to the construction of the Safeway/ Commercial Place development.

CONSULTATION

A display of detailed design plans is available for viewing at the Eltham Library, the community notice board in Commercial Place and the Shire Office until 27 October 2000.

Written comments on the design should be submitted before 27 October and addressed to: 'Commercial Place Design', Nillumbik Shire Council, PO Box 476, Greensborough 3088

PROPOSED TIMEFRAMES

to 27 October: Public Consultation on the plan.

early November: Comment on submissions by reference group.

14 November: Consideration of submissions and revised plan by Committee of Council (providing an opportunity for community presentations to the committee).

21 November: Council to adopt revised plan.

December: Capital works plan developed.

February: Construction commences.

May 2001: Redeveloped Commercial Place opened.

FURTHER INFORMATION

Enquiries about the design should be made to Stuart Menzies, Manager Environment and Cultural Planning, on 9433 3213.

2000-2003 COUNCIL PLAN RELEASED

Want to know about Council's vision for the community and its priorities for the next three years?

The Nillumbik Shire Council Plan 2000-2003 has been adopted and is available from Council.

The Plan is Council's major strategic planning document incorporating the significant initiatives that will be undertaken by Council in the

short and medium term. It sets out Council's vision, values and goals.

The Plan identifies eight goals for Council and these are further developed through objectives, annual and medium term

commitments, and three-year indicators of success. This process ensures that our vision and values are translated into real outcomes and services for the community.

Council's eight goals are:

- Environment protection and sustainability
- Land use planning, development and conservation
- Community engagement
- Economic development and tourism within the context of the Green Wedge
- Quality health and human services
- Arts and culture, education, sport and recreation
- Infrastructure and community amenity
- Organisational performance and productivity

The Plan was developed following significant input from Councillors and staff, and feedback from the Nillumbik community. Copies of the Plan are available from the Council office, local libraries or by telephoning 9433 3111.

VOLUNTEERS NEEDED

As the wheel turns

Having delivered Meals on Wheels (MOW) to members of the Nillumbik community for over 20 years, Eltham residents David and Frances Scott are now using the service themselves.

Nillumbik Council's MOW Service Coordinator, Helen Ash, says that MOW depends on the generosity of volunteers and needs people like the Scotts to provide this important service.

"For two decades David and Frances provided people in need with healthy meals. We need to make sure that there are volunteers who can maintain the delivery service across the Shire".

This service operates every lunchtime, Monday to Friday.

Council vehicles are available or travel expenses incurred by volunteers can be reimbursed. If you have at least three hours to spare each month, would like to meet new people and contribute to your community, please call Daryl Taylor on 9433 3136 for further information.

Living and Learning Centres

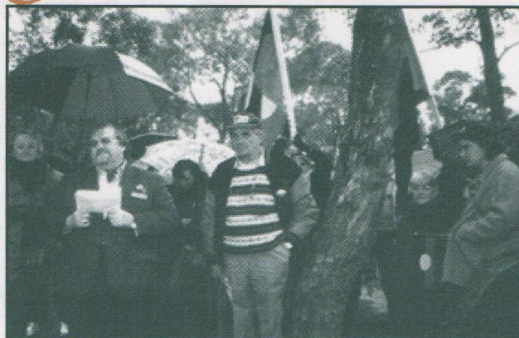
Do you have a skill you can share?

Council's Living and Learning Centres are currently planning their community education programs for the year 2001.

Volunteer tutors are needed to deliver programs at the Eltham and Panton Hill centres. Both centres offer a diverse range of programs that range from one hour to seventeen sessions a semester. Programs can be delivered during the day or evening.

Support is available for people new to tutoring through professional development provided by the centres.

If you are interested in participating as a course tutor, please call either the Panton Hill Centre on 9719 7506 or the Eltham Centre on 9439 3463.



WANTED:

your feedback on upgrades

**Diamond Creek and Aqueduct Road
Bike Trail Network
and the
Eltham North Reserve Adventure
Playground Car Park and Entrance**

Council has committed funds in its 2000/2001 Capital Works Program to upgrade the above facilities, and is seeking feedback from residents on what their preferred type of facility.

Please forward written submissions before Tuesday October 31 2000 to:
Gavin Jordan, Leisure Services Officer
Nillumbik Shire Council
PO Box 476, Greensborough 3088

For further information, contact
9433 3130.



National Reconciliation Framework

Nillumbik Council has expressed an ongoing commitment to the Reconciliation process through its support for the Council for Aboriginal Reconciliation's proposal to implement a National Reconciliation Framework.

Council identified Reconciliation as a key value in its 2000 Council Plan building on its 1998 Document of Apology and Commitment to Aboriginal Reconciliation.

The Council for Aboriginal Reconciliation (CAR) is proposing a national strategy to establish a foundation called Reconciliation Australia, that will:

- Report on Reconciliation issues;
- Maintain and further develop community support for Reconciliation by providing education and promoting community discussion;
- Provide a forum for parties, including non-Indigenous and Indigenous interests, to come together and exchange views in the interests of Reconciliation; and to
- Build the capacity for Australian people to identify and promote best practice in removing Indigenous disadvantage and further Reconciliation.

At its August meeting, Council resolved to support CAR in continuing the reconciliation process beyond 2000.

ROBERT THEOBALD MEMORIAL PUBLIC LECTURE

'Re-setting the Compass' Australia's journey towards sustainability

Environmentalists David Yencken and Debra Wilkinson will examine the pressures on our environment in their public lecture, 'Resetting the Compass.'

Australia's environmental problems, such as population growth, consumption patterns and technological change, will be discussed. Both David and Debra have worked on environmental issues and jointly authored papers, including their recent book, 'Resetting the Compass'.

Lecture will be held at:

**Eltham Community
Reception Centre**

Cnr Pitt Street & Main Road, Eltham

**2 November 2000
6.45pm - 9pm**

Cost: \$10 per head / \$5 concession

Lecture in memory of the late Robert Theobald

Projects...



More Playgrounds

In line with its commitment to providing a range of safe and fun playground environments for the children and families of the area, Nillumbik Council is building six new playgrounds during the coming year.

These playgrounds will ensure the growing number of families within the region will have plenty of opportunities to enjoy a variety of activities. The new locations are:

- Kamarooka Drive, Wattle Glen
- Tree Tops Estate, Plenty
- Woodridge Linear Park, Hartland Way, Eltham
- Phipps Crescent, Diamond Creek
- Thornton Play Park, Eltham
- Plenty River Drive, Greensborough



Susan St Pavilion completed

Nillumbik Shire spent \$225,000 on a new multi purpose pavilion at Susan Street Reserve in Eltham.

The Eltham Junior Football Club contributed \$15,000 to the overall cost, and will use the complex as its home ground.

The pavilion will consist of change rooms, rest rooms for people with disabilities, canteen and storage facilities. It will act as a support facility for the Eltham Rugby Club and Lower Eltham Cricket Club.

Council has committed extra funding for the construction of an access path from Susan Street to the pavilion.



Study to plan for BMX/skate track

Council has successfully obtained funding from Sport and Recreation Victoria to assist in a Skate/BMX track feasibility study.

This money supports the \$80,000 allocated by Council in this year's budget for the construction of a combined skate/BMX facility.

Results of the study will provide Council with strategic information on the future provision of skate and BMX facilities within the Shire, and identification of appropriate sites for the future development of these facilities.

The study will involve a full community consultation process in November and a series of public forums to identify the needs of skaters, BMX riders and in-line skaters.

Keep an eye on the local papers or contact Gavin Jordan, Leisure Services Officer on 9433 3130 for more information.

WATTLE GLEN TOWNSHIP STRATEGY

A community consultation process has commenced to create the Wattle Glen Township Strategy.

The strategy considers issues relating to land use, landscape, design, environmental management, transport, parking infrastructure, economic development and community services.

The strategy is guided by three of Council's Goals outlined in the 2000-2003 Council Plan:

- Land use planning, development and conservation;
- Community engagement; and
- Infrastructure and community amenity.

In addition to the community consultation process, the Strategy will involve:

- A communications program;
- Land use and development plan;
- Infrastructure servicing and facilities plan;
- Landscape, design, town character and heritage analysis;
- Environment conservation and land management plan;
- Traffic movement; and
- Open space community facilities and public land use plan

All works, drawings, plans and ideas gathered at a public meeting held at the Wattle Glen Primary School on 8 October will be available for comment by the end of October.

For further information, please contact Fiona Austin, Strategic Planner, on 9433 3215.

COMMUNITY WEED CONTROL PROGRAM

Nillumbik Shire's successful Community Weed Control Program is being run for the fifth year and Council is seeking land holders wanting to participate. This is a community-based control program open to all residents within the Shire.

The program focuses on using appropriate herbicides to control Cape Broom, English Broom, Flax Leaf Broom, St Johns Wort, and Gorse.

Under the program, Council pays for the herbicides used by a professional spray contractor while the landholder pays the labour costs.

A registration form and further details can be obtained by phoning Council's Environment Project Officer, Megan McCarthy, on 9433 3214.

One Koala, two Koala, three Koala, four....

Sunday 19 November is 'Count Koala Day'

Nillumbik residents are being asked to participate in the Count Koala Day project on 19 November. Residents are asked to check their properties for koalas as part of a program to record populations of the marsupials living in the suburbs and adjoining rural areas.

The count is an initiative of the Wonga Park Wildlife Shelter and is supported by Parks Victoria and various municipalities in the region, including Nillumbik Shire Council. The program is also open to local schools.

If you find a koala on your property, please remember:

- Do not attempt to handle koalas - they are not as cuddly as they appear.
- Put any dogs in the house until the koala has left. Koalas are stressed by dogs and can inflict nasty wounds.
- Alert your neighbours that a koala is present and ask them to restrain their dog/s until the koala is gone.
- If practical, place a plank of wood from the tree to a fence so the koala can move safely without having to descend to the ground.

For more information about the program and/or to receive forms to record sightings, please contact Council's Community Education Officer, Joanne Webber, on 9433 3211.

Results of previous koala counts in Nillumbik:

Location	1997	1998	1999	2000	Total
Christmas Hills			2		2
Diamond Creek			1		1
Eltham	1	5	2	2	10
Griffith Park			3		3
Kinglake	1				1
Smiths Gully			1	1	2
Watsons Creek	1	1			2
				Total	21

Open Space Strategy findings



Marg Jeffery (right) won a massage from the Eltham Leisure Centre for completing an Open Space Strategy survey. The Mayor, Cr Margaret Jennings, and staff at the Leisure Centre say thanks to Marg for participating.

Preliminary findings from Council's Open Space Strategy indicate extensive community use of open space and widespread interest in its management.

Council first identified the need for a Shire-wide Open Space Strategy in mid 1999, and commenced work on the Strategy in March this year. To date, Council has prepared an inventory of all parks in the Shire and undertaken preliminary community consultation on open space needs.

The inventory of parks has been used to prepare a series of illustrated maps showing the catchment that each park serves, the function of the parks, and the park's landscape setting. A preliminary assessment of the inventory indicates there is approximately 850 hectares of

Environment Centre proposed for Edendale Farm

Council is seeking community comment on a proposed new direction for Edendale Farm as a Community Environment Centre. Under the proposal, Edendale will play a key role in achieving Council's objective to promote environmental protection and sustainability (Council Plan 2000/2003).

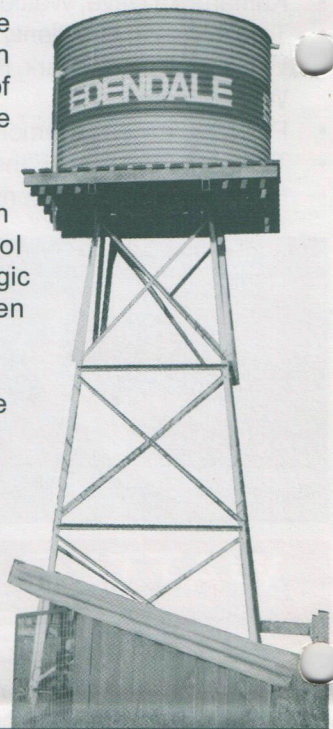
Key elements of the Community Environment Centre include a resource centre for local Landcare and Friends groups; an indigenous plant nursery; a strong emphasis on environment education through programs for school students; and land management workshops for property owners. To accommodate these new activities, improvements to the main building are proposed, along with new toilet facilities. The potential to establish a café is also being considered.

Edendale will continue to have animal displays for demonstration purposes, however the range of animals will be reviewed to ensure relevance to the Nillumbik area.

Following initial discussions with local Landcare and school representatives, a draft Strategic Directions Statement has been released for public comment.

Copies of the proposal are available from Edendale Farm, Gastons Road, Eltham (tel. 9439 8113) or from the Shire Office.

Written comments should be submitted to Council by 3 November 2000, PO Box 476, Greensborough, 3088.



public parkland in the Shire, equating to about 14 hectares of parkland per 1,000 people. The distribution and function of existing parks is currently being reviewed to determine whether identified community needs are being met.

The preliminary findings of the Strategy also indicate a number of issues for Council to address including:

- maintenance of parks;
- providing information about existing facilities;
- improvement of the cycle/walking path network to create links to and through parks; and
- creating additional links between parks via open space acquisitions.

For more information about the Strategy, contact Jessica Davison on 9433 3218.

NEIGHBOURHOOD CHARACTER STUDY AND RESIDENTIAL DESIGN GUIDELINES

Council's recently adopted Neighbourhood Character Study and Residential Design Guidelines form part of the Shire's 'Designing Our Future' initiative.

The Study defines existing and preferred neighbourhood character in localities across the Shire.

The Residential Design Guidelines assist in the interpretation of Council's Planning Scheme and act as a guide for people to gain a sense of the look and feel of each area.

The Guidelines assist builders in their understanding of the community's preferred vision for the Shire's housing landscape.

Development of the Study involved an extensive community consultation process that identified a range of neighbourhood characters and highlighted the importance of complementary and consistent housing and landscape styles.

Nillumbik Mayor, Councillor Margaret Jennings, says the Study and Residential Design Guidelines have been compiled to assist Council in the protection and preservation of the character of this Shire.



"What we are saying is: if you want to build in Nillumbik, you really need to ensure that what you build is appropriate for the area and adds to the character of the neighbourhood rather than detracting from it."

Copies of the Neighbourhood Character Study and the Residential Design Guidelines can be obtained from the Council Office or by telephoning 9433 3210.

Join a 'Friends' group

Friends Groups are an excellent way for people to become directly involved in managing Nillumbik Shire's natural environment.

The community and the region benefit directly from the work undertaken by these volunteers. Members receive the added benefits of learning new skills, developing new friendships, being part of the community and feeling good about directly enhancing surrounding areas.

Friends Groups activities include:

- Vegetation of degraded land;
- Taking part in National or State activities, such as Clean Up Australia Day
- Growing indigenous plants;
- Monitoring populations of endangered fauna; and
- Educating people about environmental issues

There are 25 Friends Groups within the Shire. Council supports the groups by lending tools and equipment for activities, providing materials for projects, organising specialised help with projects and facilitating environmental training sessions.

If you would like to be a member of a Friends Group, or require additional information, contact the Council's Environment section on 9433 3210, or visit Council's website at www.nillumbik.vic.gov.au

Clean Drains - Living Creeks National Water Week 15-21 October

Victoria's waterways need protecting and the community has a vital role to play.

Most of the litter in our bays, rivers and creeks comes directly from suburban streets. We need to recognise that somehow, at some time, we're all responsible for pollution in our waterways. To reduce this pollution, we all need to do our bit to help keep our drains clean and creeks and bays healthy.

The following tips from the EPA will help keep our waterways clean:

- Place your cigarette butts in the bin: don't drop them on the street as they are washed into stormwater drains and end up in our creeks and on our beaches.
- Compost or mulch leaves and grass clippings, don't leave them in the gutter. Leaves and other garden refuse washed into stormwater drains end up polluting our creeks and beaches. Use a broom to clear them rather than a hose.
- Don't allow paint, turps or cleaners to enter drains. Dispose of unwanted chemicals, solvents and oils responsibly. Never pour chemicals into the gutter or drain.
- Wash your car on grass or use a commercial car wash that recycles the water. Don't allow detergents to enter the gutter.

**REPORT WATER POLLUTION TO THE EPA'S
POLLUTION WATCH LINE ON 9695 2777.**



October 2000

Nillumbik Shire Council Cultural Plan 2000 - 2005

Cultural Plan adopted

Nillumbik Shire's Cultural Plan 2000-2005 has been adopted following community consultation and extensive research.

The Plan provides a framework for arts and cultural planning and decision-making, and sets out priorities for resource allocation over the next five years.

The four key directions or values are as follows:

- Our culture, our identity
- Participation in cultural activity
- Building community capacity
- Economic opportunities in arts and cultural tourism

Within each of the key directions, a set of objectives has been established with a program of strategic activities to achieve those objectives. The individual strategies have been prioritised with short-term initiatives for the first 12-18 months of implementation. The medium term initiatives should be addressed before the year 2003. Long term strategies need consideration within the next three to five years.

The objectives of the plan are to:

- Enhance the enjoyment of life through the development and provision of arts, cultural, sporting, educational and recreational opportunities; and to
- Nurture a vibrant, innovative, creative and supportive environment that encourages involvement in cultural, educational and recreational activities.

The Plan is ambitious, yet the strategies set out are achievable over the short, medium and longer terms and will position Nillumbik as a recognisable leader in the local cultural community and in the broader cultural industry.

2001 ALAN MARSHALL SHORT STORY AWARD

Contemporary Australian writers are invited to enter a short story of up to 2,500 words for the 2001 Alan Marshall Short Story Award. The prize is held in memory of the great Australian writer and former resident of Eltham, Alan Marshall.

The closing date for all entries is Friday 23 February 2001 and the judge is well known Australian writer Chris Wallace-Crabbe.

Competition details may be obtained from:
Nillumbik Shire Council, PO Box 476, Greensborough 3088
Ph: (03) 9433 3126, Fax: (03) 9432 9559
or from Council's website at www.nillumbik.vic.gov.au

Artists' Open Studios program announced

Over 25 artists from across the Nillumbik Shire will open their studio doors to reveal a world of creativity!

This is a great opportunity for Nillumbik residents and visitors to view the works of talented and well-known artists.

A wide range of art forms, including oil, acrylic and watercolour painting, drawings, ceramics, textiles and sculptures will be represented. Most works will be for sale - a great opportunity to purchase unique Christmas gifts.

Some studios will be offering talks by artists, demonstrations and 'come and try' activities.

Studios will be open in Eltham, Kangaroo Ground, North Warrandyte and Strathewen.



Artists include: Jane Annois, Piers Bateman, Peter Burn, Jules Burns, Reg Cox, Jill Forrest, Drew Gregory, Mervyn Hannan, John Hewish, Jenneke Korteweg, Grace Mitchell, Jenni Mitchell, Kay Steventon, Jane Viola, Nel Ten Wolde, Ona Henderson and Syd Tunn, Michael Skewes, Shan Shnookal, Mathew Hodesnesse and many others.

The studios will be open on Saturday 18 November and Sunday 19 November 2000.

The Artists' Open Studio Program is an initiative of the Nillumbik Shire Council and is in its 13th year.

Brochures are available from Eltham Library and Nillumbik Shire Council, or by calling Claire Harris in the Environment and Cultural Planning Department on 9433 3210

Eltham Arts Council

Masquerade Ball

The annual Eltham Arts Council Masquerade Ball will be held on Saturday 11 November at the Eltham Community and Reception Centre in Main Road, Eltham.

The theme for this year's Ball is "Even Cowgirls Get the Blues". Featured artist is Leslie Avril and her band. The cost is \$50 per head or \$45 for members of the Eltham Arts Council.

For bookings and further details, contact Leigh on 9846 2335.

November 11 - 12

Eltham Festival

2000

Look out for the full Festival program in your letterbox or local shops in mid-October and keep an eye on the local rag for further details

Readings • Spoken Word • Poetry • Acoustic Music

ELTHAM LITTLE BOOK SHOP

970 Main Road, Eltham
Saturday 11th November
Sunday 12th November
Phone 9439 8700 for details

DO LUNCH CAFÉ

Panther Place, Eltham
Friday 10th November
A Moment of Love: music and song.
Phone: 9431 2611

VOLUMES CAFÉ

Commercial Place Eltham
Saturday 11th and Sunday
12th November
Brunch 10.00am & 12.00pm
Tuesday 14th November
Art Exhibition "Caught in the
Net of Words"
Phone 9431 5000 for details

Saturday November 11 Edendale Farm

Gastons Road Eltham

Entry is by **Gold coin** donation

Family day, wholesome food and refreshments, fun farm-based activities, lots of children's activities, unique entertainment, school displays, great music and Sustainable Living Displays.

CHILDREN'S TENT & MAIN STAGE ENTERTAINMENT

Dance Hall Racketeers

Abominable Reverse garbage

Pony rides

Sheep shearing & wool spinning

Visiting farm animals

Permaculture Stall

Vox Bandicoots

Ian Hunter Story telling

Bushfood tasting

Small Hits

Wildlife Encounters

Local Community Groups

Local stallholders

Plus

Sustainable Living Displays, workshops & forums

Biodiversity – why is it important?

Native flora & fauna displays

Threatened species

Threats to biodiversity eg: rabbits, weeds.

Display of planning scheme

Maps for vegetation / biodiversity protection

Display of neighbourhood character study

Aerial photographs of Eltham

Permaculture and Landcare displays

10.30am - 4pm

Montsalbat Barn

"Art is a feast, but no feast is a real feast until it is shared"

John Masefield.

Thursday 9th
November 2000

7.30pm - 9.00pm

'Artistic Revelations'
Forum

Reg. Evans... Nillumbik resident for thirty years and actor, **confronts a line-up of local artists about their lives, their work, ambitions, hopes, fears and egos.**

Sunday November 12 Alistair Knox Park

Heaps of stalls and rides with **3 stages** of music and performance continuing into the evening. This year's programme has the Reconciliation theme weaving through it while providing some hands-on activities for young people.

"Smoking is Ugly" Healthy Arts Competition judging at 3pm in the Nillumbik Council Tent

GLOBAL STAGE

Official Opening 10.00 - 10.10 am

With bands, dance/performances including both local and Australian talents.

Highlights include: Birriong Lakidjeka Dance Group, Joe Camelleri and Jimmy Little and Band

CHILDREN'S TENT

The tent will operate from 10.00am to 4.00pm.

Featuring **'B the Clown'**, **Dreamtime Stories** by Dot Peters and **'Australia In a Suitcase'**.

CHILL OUT TENT

Wazori Percussion African Workshop: Register by 10.30am "Merlins Magick" & Yemarak

Special guests: Matt & Becky from the Mavises

D.J. Declan Kelly

Klinger

BIG BANDS SWING ON CENTRAL RESERVE

Highlights: The Sweethearts of Swing

"Shall we dance"

The Eltham Concert Band

Cal Martin and his Diamond Valley Big Band

The Eltham High Stage Band

2000 Eltham Festival Sponsors



Eltham District Historical Society (elthamhistory.org.au)

Each edition of *Nillumbik News* has featured a community Advisory Committee working with Council. This edition, we look at the:

Kangaroo Ground Tower Advisory Committee

October 2000 edition preserving the 'Tower with a View'



The Kangaroo Ground Tower Reserve (KG Tower) on the Eltham-Yarra Glen Road is one of Nillumbik's most important recreational and heritage sites. It is widely used by residents and visitors to the region, and is popular with people of all ages.

The site is historically significant for two reasons. It was a traditional meeting place for the Wurundjeri people, and it is home to the Tower built as a memorial to fallen soldiers from Eltham and the surrounding districts.

The Advisory Committee ←

Recognising the significance of the tower, Council established an Advisory Committee comprising people with strong local knowledge. The group's members are Harry Gilham, Mick Woiwod, Nicholas Pelling and Dean Stewart. Heritage consultant, Denis Ward, was co-opted to the committee and Cr Sigmund Jorgensen represents Council.

Through the hard work and commitment of the Advisory Committee, a concept plan has been developed for the site to provide a clear direction for the future management of the Tower and surrounding Reserve.

Draft Plan

The draft plan documents the history and significance of the site and sets down a program for repair, protection, interpretation and long term management. Ten key precincts have been developed and a variety of works addressing safety, community demand, community benefit and practicality are identified.

The committee is proposing a re-dedication of the War Memorial Tower on 11 November 2001.

Funding

To minimise the financial impact on Council's 2000/2001 Capital Works Program, it is proposed that the implementation of the concept plan be staged over two financial years commencing next year. The estimated costs associated are \$61,200 in 2001/2002 and \$85,000 in 2002/2003. Council is also seeking funds through the Centenary of Federation Victoria Grants Scheme to assist with the works.

The concept plan acknowledges the major significance of the site to returned servicemen, women, their families, residents and visitors. It recommends the adoption of a precinct approach to the management of the KG Tower Reserve.



Members of the KG Tower Advisory Committee
photo: courtesy Nillumbik Mail

Community Consultation

While Council has endorsed the concept plan in principle, the plan will not be formally adopted until a community consultation process is completed.

The endorsing of the concept plan by Council at its September meeting and the commitment to its future implementation reflect Council's recognition of the significance of the site

Copies of the draft concept plan can be viewed at the Council office or the Eltham and Diamond Creek Libraries.

Written submissions should be forwarded to:

Julius Peiker

Manager – Community & Leisure Service

Nillumbik Shire Council

PO Box 476

Greensborough 3088

before 4 December 2000.

Environment leaders at Eltham North Primary

Twelve students at Eltham North Primary School were formally acknowledged for their active commitment to improving the environment.

Council's Waste and Energy Minimisation Officer, Robert Hay, awarded the Grade Three to Six students with badges at their school assembly on August 28. The students, deemed Environmental Leaders within their school, were acknowledged for their implementation of programs aimed at saving energy and maintaining a clean and safe environment.



Vice Principal, Frank Butters and Environmental Leaders at Eltham North Primary School

Their plan is to introduce changes progressively and to ensure each one is successfully implemented before introducing a new idea. They have also come up with a catchy slogan: 'Don't drop it - Pop it in a bin.'

Council is funding a trip for the students to the CERES Environmental Education Centre in East Brunswick. The budding environmentalists will have the opportunity to gain ideas and hopefully inspiration to tackle environmental management within their school.

Wash against waste

People for Environmental Protection (PEP) will set up a Wash Against Waste (WAW) stall at the Edendale Farm leg of the Eltham Festival.

A wash-up crew will wash glasses, crockery and cutlery for food and beverage stall holders in order to reduce the amount of disposable waste usually attributed to such an event.

To ensure a hygienic service PEP will follow strict guidelines from the Department of Human Services Food Premises Code.

A similar WAW stall set up at the Gateway Festival in Healesville inspired the project. At the previous year's Festival, bins were overflowing by 3pm and rubbish was all over the park. With the WAW stall, 90 per cent of the bins were less than one quarter full and there was no rubbish in the park.

PEP is looking for an army of volunteers to help at the festival and it is seeking donations in the form of:

- a 30 litre thermostatically controlled electric hot water urn
- 100 mugs
- 100 glasses
- 60 teaspoons
- two trolleys
- a double stainless steel sink and fittings
- a five metre electrical extension lead
- 18 metre hose
- six 10 litre plastic buckets with lids
- plastic crates
- tea towels
- heavy duty rubber gloves
- aprons
- wash-up tubs
- dishdrainers
- dishcloths
- a thermometer

If you can help with any equipment or as a volunteer, please contact Faye on 9439 6367 or Marguerite on 9439 3232.

ENERGY SMART COOLING TIPS

With summer just a couple of months away, Nillumbik Shire provides the following energy smart cooling hints provided by Energy Efficiency Victoria to help ward off the discomfort of those hot days and nights whilst saving money and valuable energy.

Summer comfort in your home can be achieved by insulating, shading your windows, sealing out draughts, using natural ventilation or installing a cooling system.

Air conditioners, more than any other appliance, place the greatest demand on our valuable energy resources. When using your air conditioner remember to:

- Set the thermostat between 25-27C. Each degree you lower the thermostat can increase running costs by up to 15%.
- Buy units with economy settings.
- Multi-speed fans allow you to select high speeds for fast circulation and quick cooling.
- Adjustable and rotating louvres also help to direct air movement more evenly around the room.
- Programmable timers allow the system to be switched on or off as required.
- Locate window/wall units on the south side of the house if possible. If the unit is exposed to full sun, provide it with shade with an awning or canopy of shade trees. However, do not restrict air -flow over it.

Other types of effective cooling systems are portable and/or ceiling fans and evaporative coolers. Types of evaporative coolers include portable units, fixed room units and ducted whole house (central) systems.

Enjoy your summer and stay cool!

WANTED:

Locally made food stuffs

Nillumbik Shire Council is keen to promote local producers and growers of foodstuffs. The first step will be to produce a food register. We would like all interested parties to attend a think tank to discuss the possibilities.

Time 7.30 – 9.30 pm
Date Monday 9 November
Place Reception Meeting Room
Nillumbik Shire Council
RSVP Andrew Port or Deb Ganderton on 9433 3315

Shire businesses unite

Yarra Valley, Dandenongs and the Ranges Campaign
2001/2002 prospectus is available!

Nillumbik Tourism Association (NTA) is well represented in the latest Tourism Victoria's jigsaw campaign for this region. A double page spread highlighting the region's Arts, Environment, Heritage, Food and Wine will feature in the glossy brochure.

Businesses can participate in the campaign either individually or cooperatively. This cost is matched dollar-for-dollar by the NTA and then Tourism Victoria matches that by \$2 for every dollar. In other words, for every \$1 you invest, \$4 goes into the regional campaign.

Both the NTA and Council have prominent roles on the Regional Board and Campaign Committee this year.

NTA Marketing Chair, Jan Kelly from Hurstbridge Nursery, explains: "It makes sense for some of the bigger businesses to take out their own ad. We have negotiated with the campaign committee to have all Nillumbik ads appear at the start of the Yarra Valley section to create a 'gateway experience'.

"But it also makes sense for smaller operators to band together to create a significant presence in the highly successful campaign. Our business will certainly be signing up."

A full campaign will support the brochure and responses will be tracked and feedback given to all Nillumbik advertisers.

Call Deb Ganderton, Tourism and Business Development, on 9433 3315 or 0438 010 530 to discuss the opportunities for your business to participate in this campaign.

Tourism Chief congratulates the NTA

'You've got it right' was the message delivered by Jack Rasterhoff, Chief Executive of Victorian Wineries Tourism Council. Mr Rasterhoff congratulated the Nillumbik Tourism Association Food and Wine Group following their presentation to the Annual General Meeting held at Yarrambat Golf Club earlier this month.

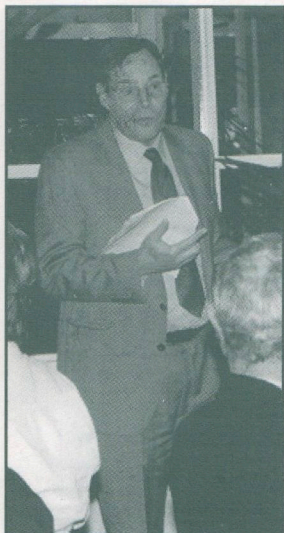
"Cafes and winemakers working together to create a quality visitor experience is the way to grow. Diamond Valley winemakers feature in restaurants throughout Australia.

"What you are now offering is the chance to come and see the 'winescape' and taste the wines where they are grown – a pretty compelling offer so close to Melbourne", said Jack Rasterhoff.

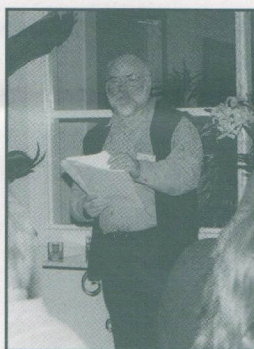
The Nillumbik 'Food and Wine Trail', to be launched at Wine Australia on 23 November, will feature in Wine Regions of Victoria - a publication to be released on that day.

NTA Chairman, Martin Wright, presents the 2000-2003 Business Plan and Marketing Strategy

Mr Jack Rasterhoff, Chief Executive Victorian Wineries Tourism Council, congratulating the NTA members on their investment in the Yarra Valley campaigns.



Michael Jansz, Syd Tunn, Anne Connor and Ona Henderson enjoy the AGM



Gourmet Traveller and Wine Magazine come to town.

Observed coming out of Vonnie Frazer's Grovedale Cottage in Kangaroo Ground was Kayte Nunn, editor of Wine magazine and Assistant Editor of Australian Gourmet Traveller. Kayte was visiting the region at the invitation of Louise Heathcote of Lovegrove of Cottles Bridge winery as part of a Small Wineries of the Yarra Valley Group promotion... look for the story in the October edition of Wine Magazine.

Calendar of Events

OCTOBER

Every Saturday

St Andrews Market

Unique alternative market in tranquil bush setting featuring homemade/grown goods

St Andrews (opposite the pub)

8.00 am until 1ish

Details: 9438 3371

Wednesday 11 Oct – Monday 23 Oct

“MindQUAKES”

Art exhibition featuring work from community projects.

Arts Project Australia and Churinga Arts

Opening 6:30pm. Details: 9433 3136

Tuesday 17

Eltham Copper Butterfly Count

Join the search for Eltham Copper Butterfly caterpillars.

Volunteers are invited to bring along a torch and help the count.

8.00pm. Details: 8341 7431

Wednesday 18

Waterwatch ‘Snapshot’ Day

Nillumbik and Banyule’s Waterwatch Coordinator will be at Lenister Farms Wetlands to demonstrate water quality monitoring techniques and to discuss how schools and community groups can be involved.

3.30pm - RSVP phone: 9433 3210

Thursday 19

Timelines of the Middle Yarra

Listen to Glen Jameson (Parks Victoria) speak about the true seasons of the Middle Yarra and the environmental changes that occur. Free calendar to all that attend.

8.00pm - RSVP phone: 9433 3210

Thursday 19

Eltham Copper Butterfly Count

Join the search for Eltham Copper Butterfly caterpillars.

Volunteers are invited to bring along a torch and help the count.

8.00pm. Details: 8341 7431

October 21

Nillum-bik Journey

Join knowledgeable local historian and author of ‘The Last Cry’, Mick Woiwod, to visit sites of Aboriginal significance in the Yarra Valley. Cost \$30.80, conc \$26.40.

Bookings essential. Contact the Eltham Living and Learning Centre. Details: 9439 3463

October 23-30

Journey to Eccentricity

VCA opera invites you to immerse yourself in a unique opera experience inside the mystique of historic Montsalvat.

Evenings. Details: 9685 9405

October 28

Kangaroo Ground Country Carnival

Features parade, demonstrations, sporting identities, local produce, performances and a bush dance. Many community organisations involved.

Contact the KG Primary School for details on 9712 0292

NOVEMBER

Thursday 2

“Re-Setting the Compass: Australia’s Journey Towards Sustainability”

Nillumbik Shire Council Robert Theobald Public Lecture featuring Prof David Yencken and Debra Wilkinson.

Eltham Community & Reception Centre

Cnr Main Rd & Pitt St Eltham.

6:45pm – 9:00pm - Details: 9433 3136. Bookings: 9433 3134

Sunday 5

Eltham Community Art and Craft Market

Arthur Street, Eltham

9.00am – 2.00pm. Details: 9444 7833

Thursday 9

‘Artistic Revelations’ Forum as part of the Eltham Festival

“Art is a feast, but no feast is a real feast until it is shared”:
John Mansfield.

Designed to expose the hidden truths behind the art world, ‘Artistic Revelations’ will reveal fears, phobias, truths, cupboard skeletons and more of prominent local artists. This event will be an irreverent look at what makes artists tick - or tock!

Montsalvat 7.30pm - 9pm Details: 9433 3327

November 9 - 27

A selection of works from the Shire-wide Artists’ Open Studios Program

Eltham Library Community Gallery, Panther Place, Eltham

Details: 9433 3131

Saturday 11 and Sunday 12

Eltham Festival

Alistair Knox Park and various locations around Eltham

Day and Night. Details: 9433 3327

Saturday 11 and Sunday 12

Mudbrick Tours

An annual event held the second weekend in November, involving a tour of mudbrick homes and buildings. Mudbrick demonstrations are held throughout the day.

Ticket Sales and departure from the Panton Hill Pre-School

Details: 9710 1571

Events continued page 16

Dollars saved by regular road maintenance

Council's regular road maintenance saves ratepayers' money and ensures that roads are kept to a high standard, according to Greg Scott, Council's Manager Infrastructure Development.

"Regular maintenance of the Shire's road network keeps road surfaces watertight, corrects loss of surface shape and strengthens pavement materials whilst saving the community money," says Mr Scott.

"Just as it makes good sense to repaint a weatherboard house rather than to allow the timber to rot away and need replacement, the same principle applies to roads."

By frequently maintaining the road system, Council ensures the current asset value of the system is maintained. Resealing roads in this manner usually costs around \$3 a square metre. If the roads are left untreated, rehabilitation treatments costing \$20 to \$30 per square metre may be required within a few years.

A State Government report issued earlier this year on Victorian councils spending on infrastructure revealed Nillumbik Shire Council rates highly in relation to maintenance of its road network.

Whilst residents may experience some inconvenience when the works are being carried out, every attempt is made by Council to keep these disturbances to a minimum. To avoid major disturbances to motorists where traffic volume is high, works are carried out during the night.

Road users can show consideration to the sealing contractors working on the roads by travelling slowly through the work-sites.

For further information, contact:
Greg Scott, Manager Infrastructure Development, Nillumbik Shire Council, PO Box 476, Greensborough 3088

Regional Road upgrades

Improvements to the Eltham-Yarra Glen Road will be just one of several projects undertaken as part of the Regional Improvement Program due to take place in Nillumbik.

The upgrades are part of the Better Roads Victoria program funded by State Government. Works will be undertaken on the the Warrandyte-Kangaroo Ground Road.

Road studies will be conducted on the Diamond Creek, Yan Yean, McDonalds, Gorge and Kurrag Roads.

Rural roads grading program

A number of rural roads within the Shire are due for upgrade over the next three months.

Council Depot Manager, Steven White, says the works will begin this month and be finished by Christmas, weather permitting.

The area bounded by Buttermans Track, School Road, Shaws Road, Greens Road, Arthurs Creek Road, Ridge Road, the Kinglake National Park Boundary and Marshals Road will be upgraded.

"Drivers should take care on these roads whilst the works are being carried out," says Mr White.



STORMWATER MANAGEMENT PLAN

Council, in partnership with Melbourne Water, is drafting a plan to effectively manage stormwater within the Shire.

The Stormwater Management Plan will be developed to recognise the impact that activities within the Shire have on:

- stormwater quality,
- the health of receiving environments, and
- to identify actions to address environmental degradation in areas where the environmental risk is greatest.

It is expected that the development of the plan will cost about \$40,000. Council has allocated \$20,000 in the 2000/2001 budget, with the remaining \$20,000 being contributed by Melbourne Water.

The plan will provide a base for future internal and external funding applications for stormwater management including wetlands and litter traps. It will also be a useful tool for future policy development and decision making throughout the organisation.

A community consultation process will occur as part of the preparation of the plan.



Rates notices issued

Rates notices for the 2000-2001 year have been mailed to about 22,000 properties in Nillumbik Shire and incorporate the results of the recent statewide revaluation of properties.

The average increase in property values following the revaluation was 25%, with increases greatest where the property is situated on a larger parcel of land.

Council offers five rate payment options, including over the counter at the Shire Office, B-Pay, through Commonwealth Bank branches, Australia Post offices or by mail. Full details are listed on the reverse of the Rate Notice.

Nillumbik Chief Executive Officer, Catherine Dale, said Council's rating strategy relating to vacant land in the residential and township zones only applies to properties that are not contiguous with another property.

"This means that if someone lives in a house on one title but use adjoining titles for a garden, the total 'property' will be rated at the General Rate.

"Vacant Land rated at twice the general rate only applies to uninhabited properties within the Residential One zone or the township zone," she explains.

For further information about Council rates, contact the Nillumbik Shire Rate Office on 9433 3285.

Locality boundary update

Council is currently reviewing over 600 submissions (including several petitions) received in relation to the review of locality boundaries in Nillumbik Shire.

Proposed boundaries, reflecting the community submissions and petitions, are likely to be considered by Council at its December meeting.

Opportunities for community comment on the proposed boundaries will be available before Council adopts the final boundaries in the new year.

Australia Day awards

Every year on Australia Day, people within Nillumbik are recognised for their contribution to the community.

Australia Day is a time to reflect upon our achievements as a nation and as a community. We have much to be proud of and it is important to give thanks and recognition to the many people who help us achieve this.

Each year, Nillumbik Council announces its Citizen, Young Citizen and Community Group of the Year. Nominations will be called during November. Watch the local papers or telephone Council on 9433 3110 for details.

The Jagajaga Community Australia Day Awards, which will be presented for the seventh year, have become a local community tradition. The Awards recognise the outstanding contributions of people who either live, work or give their time in this area. For nomination forms or further information about the awards, contact Robyn at Jenny Macklin's office on 9459 1411.

Sustainable Agriculture Rebate

Council's Sustainable Agricultural Rebate (SAR) is an important incentive program designed to encourage sustainable land management practices and the implementation of these principles on broad hectare farms within the Shire.

Originally initiated in 1996, a recent examination of the initial objectives and desired outcomes of the program has identified a number of areas requiring improvements.

As part of this review, a paper has been written outlining relevant issues and recommendations to improve the program.

For further information or to receive a copy of the review paper, please contact Council's Environment Project Officer, Megan McCarthy, on 9433 3214.

Advice on private drinking water

With the passing of yet another winter recording below average rainfall and summer just three months away, Nillumbik Council is concerned that residents have up to date information on safe drinking water.

Advice on how to ensure private water supplies are safe to drink, the kinds of health risks that may arise from a private drinking water supply and general advice on disinfection and filtering can be found in a booklet titled 'Your Private Drinking Water Supply'.

The 11 page booklet, published by the Department of Human Services, is aimed at people living on rural or semi-rural properties who have or may be considering installing their own private drinking water supply.

The guide covers simple information in regards to:

- the kind of health risks that may arise from a private drinking water supply not correctly maintained, and
- precautionary measures that can significantly reduce the likelihood of harmful bacteria or chemicals becoming a problem in private water supplies.

Adrian Cully, Coordinator of Environmental Health Services at Nillumbik Council, says that drinking water containing harmful bacteria can cause severe gastro-enteritis to infants, elderly people and others with suppressed immune systems.

'Water from rain water tanks or deep bores is usually very palatable, but it sometimes can be contaminated by human, bird or animal faeces usually from leaking septic tanks, waste water drainage, or bird or possum droppings on roofs.'

"The risk of contracting illnesses can be greatly reduced by obtaining drinking water from a clean, good quality source such as rainwater and regularly maintaining your water supply system," explains Mr Cully.

Events cont...



Sunday 12

De Vine Theatre and Twilight Music

Lovegrove of Cottlesbridge,
1420 Heidelberg-Kinglake Road, Cottles Bridge
Theatre 2.30pm
Twilight Music
Details: 9718 1569

Sunday 12

Arthurs Creek Garden Walk

Six Gardens will open 9.30 – 6.00 Maps and tickets available from the commencing point, the Arthurs Creek Hall, where there will be cottage plants, refreshments and local art displays.
Cost: \$6-8. Details: 9714 8270

Saturday 25 and Sunday 26

Rob Roy Hill Climb

Rob Roy in Christmas Hills. Held annually in Christmas Hills, the Hill Climb attracts large crowds. The event involves historic racing cars with celebrity racing drivers.
Details: 9439 5464

Sunday 26

Eltham Leisure Centre Fun Run

8km run and 6km walk starting at 9am from the Eltham Leisure Centre. First 300 participants receive a free T-shirt. Bring your friends and family to the BBQ and activities after the run. Entry forms from the Eltham Leisure Centre, corner Susan and Brougham Streets, Eltham.
Details: 9439 2266

NILLUMBIK

NILLUMBIK SHIRE COMMUNITY NEWSLETTER
OCTOBER 2000



News

TO THE HOUSEHOLD

NILLUMBIK SHIRE COUNCIL
COMMUNICATIONS SECTION
PO Box 476
GREENSBOROUGH VIC 3088

CIVIC DRIVE, GREENSBOROUGH

TEL: 03 9433 3111

FAX: 03 9432 9559

EMAIL: NILLUMBIK@NILLUMBIK.VIC.GOV

Sunday 12

Hurstbridge Community Market

Allwood House (just a short walk from Hurstbridge Station)
10.00am – 2.00pm
Details: 9718 2717

Saturday 18 and Sunday 19

2000 Nillumbik Artists Open Studios

Artists living in the Nillumbik Shire invite you to join them at their studios over the weekend.
Details: 9433 3131

Sunday 19

Indigenous and Exotic Grass Identification

with Stephan Smith
Panton Hill Living & Learning Centre
10am-12pm 9433 3195

Sunday 26

VIC Jones Lang La Salle Challenge

Foot race passing through Nillumbik from Skyline Road on Eltham-Yarra Glen Road to Fitzsimmons Lane
8.00am – 1.00pm. Details: 9433 3130

DECEMBER

Sunday 3

Eltham Community Art and Craft Market

Arthur Street, Eltham
9.00am – 2.00pm
Details: 9444 7833

Sunday 10

Hurstbridge Community Market

Allwood House (just a short walk from Hurstbridge Station)
10.00am – 2.00pm
Details: 9718 2717