

Governor of Victoria re-dedicates KG War Memorial Tower

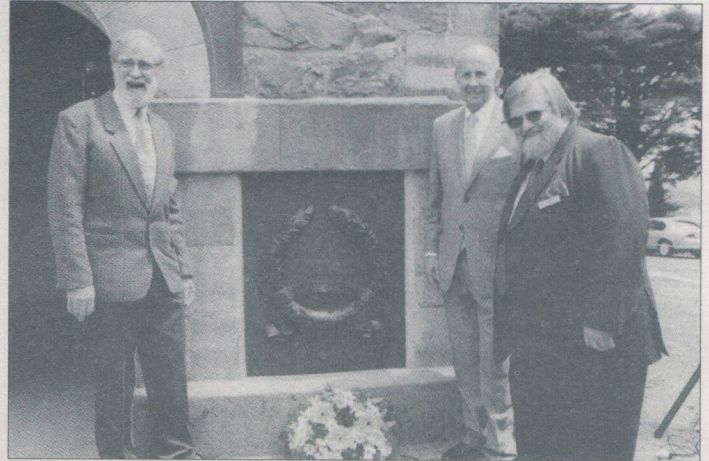
The Governor of Victoria, John Landy, visited the Shire on Thursday 8 November to participate in a ceremony to re-dedicate the Kangaroo Ground War Memorial Tower.

The ceremony included a brief military service and involved representatives from the Diamond Valley Vietnam Veterans Association, local servicemen and women, students from the Kangaroo Ground Primary School, local MPs, Nillumbik Councillors, and members of the local community.

The Governor unveiled two new bronze plaques commemorating those who served in the four-armed conflicts of Korea, Borneo, Malaya and Vietnam.

Nillumbik Mayor, Cr Sigmund Jörgensen, said the plaques are set in recesses on either side of the entrances to the Tower and are a welcome addition to this important community facility.

The KG Tower was built in the 1920s to remember those from the Shire of Eltham who died for their country during World War One, and



L-R: Kangaroo Ground Tower Advisory Committee Convenor, Harry Gilham, the Governor of Victoria, John Landy, and Nillumbik Mayor, Cr Sigmund Jörgensen, at the rededication ceremony with one of the new plaques.

was officially opened by the then Governor-General Lord Stonehaven. A second dedication occurred in 1951 for those who fell during the Second World War. That event was attended by the Victorian Governor, Sir Dallas Brooks.

After the ceremony at the Tower, the Governor visited the recently completed Eltham Town Square and attended the Eltham Woodworkers' exhibition at the Community Centre.

INSIDE THIS ISSUE

- 2 COUNCIL/PROFILE
- 3 UPDATES
- 4 COMMUNITY
- 5 FEATURE
- 6 ENVIRONMENT
- 7 PROJECTS
- 8 ELTHAM FESTIVAL ALBUM
- 10 ROADS
- 11 UPDATES
- 12 BUSINESS & TOURISM
- 13 CALENDAR OF EVENTS
- 14 WORKS
- 15 IN BRIEF



From all at Nillumbik Shire Council, have a happy and safe Christmas and we'll see you in the New Year.

Printed on recycled paper

Your 2002 Community Calendar

Nillumbik Council has pleasure in presenting the 2002 Nillumbik Community Calendar.

The 2002 Calendar is an initiative of this Council and revives a tradition of the former Eltham and Diamond Valley municipalities.

This year's calendar features the work of renowned local environmental photographer Jacinda Brown and includes a series of stunning images captured across the Shire.

Additional copies of the calendar are available from the Nillumbik Shire Council office for \$10 or for \$12 (includes postage) by telephoning Council on 9433 3110.



Message from the Mayor

The first year of the third millennium is drawing rapidly to a close, and what an eventful year it has been.

Across the Shire we have seen many exciting Council projects and events – among them, the rededication of the War Memorial Tower at Kangaroo Ground, the opening of a new pavilion for the Eltham Junior Football Club, a revitalised Diamond Creek Town Fair with Rotary at the helm, and the Eltham Town Square.

Within the Shire, work goes on to prepare and finalise the various strategies that will help guide Council as it confronts issues over the next few years.

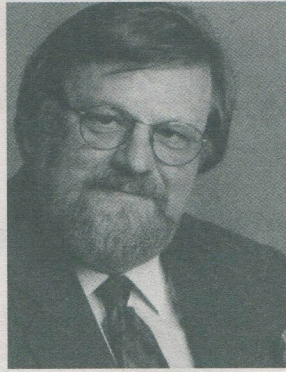

We are pleased to announce that both the Diamond Creek and Hurstbridge township beautification programs are progressing with the draft plans currently on exhibition for public comment.

Nillumbik prides itself on being the “Green Wedge” Shire where the natural environment is always at the forefront in our planning debates. We want to ensure that the charm of the area is not debased or lost beneath the urban sprawl and I think we have achieved a great in this regard during 2001.

This is the International Year of the Volunteer and, as it draws to a close, I would like to again recognise the contributions of our many, many volunteers. I have been humbled to learn about the scope and extent of volunteer activity in our great Shire. I offer a very sincere ‘thank you’ to the many Nillumbik citizens who volunteer their time and energy for the betterment of our community.

Of course, with summer upon us it is timely to remind ourselves of the ever-present threat of bushfire. We should ensure that our gardens and homes are properly maintained to protect them from fire. As the weather becomes hotter and the ground dries out, so do the gardens and the surrounding bushland. Page 11 of this edition features some simple suggestions for how plan and prepare for fire. I would also remind you that water is a very precious resource and one we should always use with great care.

May I, on behalf of the Shire Councillors and staff, take this opportunity to wish you well for a marvellous Christmas and a prosperous and peaceful New Year.



Sally Crew

Projects Engineer

Sally Crew has been with Council for two years as a Project Engineer in the Infrastructure Development section. During this time, Sally has principally been involved in traffic management and road safety.

Sally is an active member of Roadsafes (formerly the Community Road Safety Council) and works with a wide range of organisations (including local police, schools and residents) to monitor and improve road safety around the Shire.

She says that road safety needs to be tackled from a variety of angles, such as engineering, education and enforcement.

“Working with the different groups within the community can be complex, but we always try to listen to everyone and in the end find solutions that create a safer environment for all”, she says.

Recently, Sally was involved in the Eltham Precinct Traffic Management Study and in the development of Council’s Blackspot Applications.

“Through these roles, Council can really make a difference in terms of traffic management issues and hopefully make the Shire a safer place.”



Matthew Hall

Project Engineer

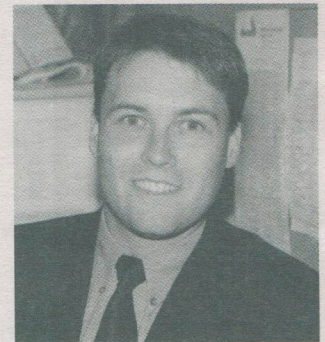
Matthew has worked at Nillumbik Shire Council for four and a half years, as part of the Infrastructure Development section.

Since joining Nillumbik, Matthew has been involved in traffic management projects, stormwater quality management, special charge schemes and Council’s capital works and art in public places programs.

He has most recently been involved in the Eltham Town Square project as Council’s project manager.

“A large component of local government engineering is working with the local community and this is a part of the job that I enjoy.”

“In particular, I enjoy the challenges that come from providing infrastructure in an area with such high environmental values.”



2002 Council Meeting Dates

Nillumbik Council at its November meeting adopted the Council meeting schedule for 2002.

Council will again hold meetings at four facilities located around the Shire as part of its ongoing program to encourage community participation in its decision-making processes. The schedule for 2002 is detailed below:

Meeting date	Type of meeting	Venue
22 January	Planning and Building Committee at 7.30pm Policy and Services Committee at 7.30pm	NSC
29 January	Ordinary Meeting of Council at 7.30pm	NSC
12 February	Planning and Building Committee at 7.30pm Policy and Services Committee at 7.30pm	NSC
19 February	Ordinary Meeting of Council at 7.30pm	Arthurs Creek Hall Arthurs Creek Road, Arthurs Creek
5 March	Planning and Building Committee at 7.30pm Policy and Services Committee at 7.30pm	NSC
12 March	Ordinary Meeting of Council at 7.30pm	NSC
26 March	Special Meeting of Council at 7.30pm <i>(to swear in new Council and elect Mayor)</i>	NSC
16 April	Planning and Building Committee at 7.30pm Policy and Services Committee at 7.30pm	NSC
23 April	Ordinary Meeting of Council at 7.30pm	NSC
14 May	Planning and Building Committee at 7.30pm Policy and Services Committee at 7.30pm	NSC
21 May	Ordinary Meeting of Council at 7.30pm	Diamond Creek Community Centre Main Road, Diamond Creek
11 June	Planning and Building Committee at 7.30pm Policy and Services Committee at 7.30pm	NSC
18 June	Ordinary Meeting of Council at 7.30pm	NSC
16 July	Planning and Building Committee at 7.30pm Policy and Services Committee at 7.30pm	NSC
23 July	Ordinary Meeting of Council at 7.30pm	NSC
13 August	Planning and Building Committee at 7.30pm Policy and Services Committee at 7.30pm	NSC
20 August	Ordinary Meeting of Council at 7.30pm	NSC
10 September	Planning and Building Committee at 7.30pm Policy and Services Committee at 7.30pm	NSC
17 September	Ordinary Meeting of Council at 7.30pm	Youth Road Hall Youth Road, Eltham (TBC)
24 September	Special Meeting of Council at 7.30pm <i>(to adopt the Annual Report)</i>	NSC
8 October	Planning and Building Committee at 7.30pm Policy and Services Committee at 7.30pm	NSC
15 October	Ordinary Meeting of Council at 7.30pm	NSC
12 November	Planning and Building Committee at 7.30pm Policy and Services Committee at 7.30pm	NSC
19 November	Ordinary Meeting of Council at 7.30pm	NSC
10 December	Planning and Building Committee at 7.30pm Policy and Services Committee at 7.30pm	NSC
17 December	Ordinary Meeting of Council at 7.30pm	Mechanics Institute Hall Cnr Burns and Proctor Streets, St Andrews

Please note: NSC (Nillumbik Shire Council) is located at Civic Drive Greensborough

Election details

With a Council election due in March 2002, the key dates have been released by the Victorian Electoral Commission which will conduct the election for the Shire.

Nominations for the Council elections open on 7 February 2002, and close at 4pm on 12 February 2002. Ballot packs will be mailed out between February 26 and 28 while postal voting for the election closes at 6pm on Friday, 15 March 2002.

The votes will be counted and the result declared on Saturday 16 March 2002. A Special Meeting of Council will be held on 26 March to swear in the new Council and elect the Mayor.

The Victorian Electoral Commission will be based at the Shire office from early February until after the election.

All Nillumbik residents, ratepayers and business owners aged over 18 years are eligible to vote in the elections. Voting is compulsory.

Fence your pool or spa now

A swimming pool or spa can be a great source of fun and relaxation for you, your family and friends.

However, an effective safety barrier to restrict access by unsupervised young children and therefore reduce the risk of accidental drowning is mandatory under State Government regulations.

All swimming pools, spas and jacuzzis deeper than 300mm require adequate safety barriers under regulations that came into effect on 1 July 1997.

Property owners who are not compliant may face fines up to \$5,000.

Council officers are empowered to inspect properties with pools and spas to make sure that isolation barriers are installed and met State Government guidelines.

Information on pool safety barrier compliance can be obtained from a private Building Surveyor or by contacting Council's Building section on 9433 3243.

Summer at the Diamond Creek Pool

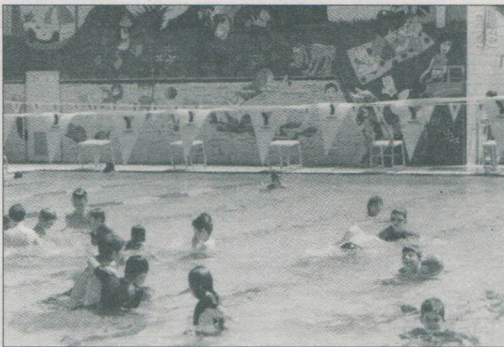
The recently upgraded Diamond Creek heated outdoor swimming pool is now open in anticipation of another busy summer season.

The pool is a popular venue for early morning lap swimmers, local schools for swim lessons and carnivals, and the Diamond Creek Swimming Club for training and club events. The Complex has extensive shaded grounds, BBQ facilities and a 25 metre pool for all to enjoy on those hot summer afternoons.

Funding from Sport and Recreation Victoria contributed to the recent upgrades including the installation of a new toddlers area and pool. An impressive shade structure provides plenty of shade for parents to relax and enjoy a splash with their toddlers.

The pool is open from 6am to 6pm Mondays, Wednesdays and Fridays, and from 9am to 6pm Tuesdays, Thursdays, Saturdays and Sundays.

The pool stays open up to two hours longer on extremely hot days if demand warrants. Call 9438 1883 to check opening hours.



Environment-friendly toilets at Edendale Farm

During the recent Eltham Festival, Council launched new displays on alternative energy and water efficiency at Edendale Farm Community Environment Centre.

Recently installed public toilets have been designed using a fast-acting septic system, enabling the treated water to be recycled for irrigation of non-food plants.

The system, called Aqua-nova 2000, was designed by Australian company Everhard Industries and meets the Australian Quality Standards.

The waterless urinals use new technology that does not require flushing, resulting in significant savings in water usage and costs. Hot water for the hand basins is provided by a solar-powered hot water system, while the photo-voltaic cells on the roof also provide solar-powered electricity for the main building.

These systems are ideal for domestic use. To see these environmentally efficient technologies in action, and to learn more about how they function, visit Edendale Farm Community Centre. Interpretive signage detailing how the system works and outlining the benefits of installing these toilets into your home has been erected close to the toilets.

Edendale Community Farm is situated at Gastons Road, Eltham and is open 9am to 5pm Tuesday to Sunday.

For further information, please call 9439 8113.

Community Fire Safety Expo a success

With the fire season fast approaching, Nillumbik Council held a Fire and Community Safety Expo on 2 December at the Nillumbik Oval in Diamond Creek.

The Expo is part of a Council strategy to raise awareness of fire risk in the Shire and to assist property owners to plan and prepare for a wildfire or emergency in the municipality.

Officially opened by the Minister for Police and Emergency Services, the Hon Andre Haermeyer, the Expo was held in conjunction with the Victorian Police, State Emergency Service, Country Fire Authority, Metropolitan Fire and Emergency Services Board and the St John's Ambulance.

Council's Emergency Risk Co-ordinator, Norm Golgerth, said the Expo was the result of a commitment by the emergency service agencies to work together and to increase community preparedness.

He said the purpose of the Expo was three-fold. Firstly, to raise awareness of the role and importance of volunteers, secondly to encourage new volunteer recruits, and thirdly to improve community understanding about a range of fire and safety issues.

Activities on the day included:

- Free give-aways;
- Interactive displays;
- Personal survival;
- House fire safety;
- Crime prevention;
- Emergency vehicle displays; and
- Emergency services displays.



Captain of the Diamond Creek Fire Brigade, Peter Perkins, Minister for Police and Emergency Services, the Hon Andre Haermeyer, and Council's Emergency Risk Coordinator, Norman Golgerth, meet at Fire Expo.

Calendar of events

DECEMBER 2001

Sunday 2 - Friday 23 December "Wonders of Nature"

Stunning wildlife drawings by the award winning artist Janet Matthews.

Eltham Wiregrass Gallery
559 Main Road, Eltham
Details: 9439 1467

8th December - 30th January "From Turner to Zen"

Exhibition by Tony Smibert.
Evelyn County Estate

20 December - 11 March

Defining Acts: Australia on Stage

This delightful and informative portrayal of our theatre explores the representation of the Australian character on stage.

Montsalvat, 7 Hillcrest Avenue Eltham
10 - 5 Daily Free Entry
Enquiries 9439 7712

JANUARY 2002

January & February Exhibition

Exhibition of paintings by Nancy Johnson

Lovegrove Vineyard & Winery
1420 Heidelberg-Kinglake Road
Cottles Bridge

Saturday 5, 12, 19 & 26 January

Acoustic Guitar

Nick Charles performing acoustic guitar.
Evelyn County Estate

Sunday 27

Black Cat Bone

3 piece rhythm and blues harmonies, playing in the garden.

Watsons Creek Antiques & Café

27th January - 17th February

Solo Exhibition by Vida Pearson

Vida Pearson is a leading artist and printmaker.

Eltham Wiregrass Gallery

FEBRUARY 2002

Friday 1st February

Cake Tasting

Watsons Creek Antiques & Café

Saturday 2, 9, 16 & 23 February

Acoustic Music

Louise O'Dwyer performing acoustic guitar and vocals.

Evelyn County Estate

5th February and 17th February

Drawing Classes

Drawing classes with Janet Matthews, award winning artist.

Eltham Wiregrass Gallery
Enquiries: 9439 1467

Sunday 10 February

Black Cat Bone

3 piece rhythm and blues harmonies, playing in the garden.

Watsons Creek Antiques & Café

Saturday 16th & Sunday 17th

Honda Yarra Valley Grape Grazing Festival

Saturday is a family day with no entry fee and includes pony rides, face painting, gourmet baguettes, coffee Mio, gourmet ice cream, Petanque tournament and much more.

Lovegrove Vineyard & Winery

22 February to 3rd March 2002

Nilumbik Festival of the Arts

art, caught in the act is a Shire wide festival that takes art to the audience.

Enquiries: 9433 3131

MARCH 2002

Festival of Dreaming

Montsalvat Details: 9439 7712

March and April

Exhibition

Exhibition of works related to the Mandala by Emma Samin and Nerina Lascalles.

Lovegrove Vineyard & Winery

Friday 1st March

Cake Tasting

Watsons Creek Antiques & Café

Sunday 3rd March

Summer in Seville

12.30pm

Lovegrove Vineyard & Winery

\$75 per person

- bookings limited: 9718 1569

Sunday 3rd March

Black Cat Bone

Watsons Creek Antiques & Café

March 10 & 11

Yarra Valley Grape Grazing

Graze with the Yarra Valley Gateway wineries. Saturday is a family day and is free of charge. Sunday is wine, music and great local produce. Make a weekend of it!

Various wineries Details: 1300 660 072

Saturday 16 March and Sunday 17 March

Warrandyte Community Festival

Held annually in March, with parade, stalls, fireworks, children's activities, entertainment and a strong environmental focus

Warrandyte

Sunday 24 March

Black Cat Bone

Watsons Creek Antiques & Café

Friday 5 April

Cake Tasting

Watsons Creek Antiques & Café

Sunday 21st April

Black Cat Bone

Watsons Creek Antiques & Café

REGULAR EVENTS & MARKETS

EVERY SATURDAY

St Andrews Market

St Andrews (opposite the pub)

8.00 am until 1ish

Details: 9438 3371

IST FRIDAY EVERY MONTH

Songlines: semi acoustic world music

St Margaret's Church, Pitt Street Eltham.

8.00pm. Details: 9439 4816 Family \$25

Adult \$12 Conc. \$9 Child \$3

IST SUNDAY EVERY MONTH

Eltham Community Art and Craft Market

Arthur Street, Eltham

9.00am - 2.00pm

Details: 9444 7833

BI MONTHLY

Hurstbridge Community Market

Allwood House (just a short walk from Hurstbridge Station)

10.00am - 2.00pm

Details: 9718 2717

Capital Works projects on track for 2001-2002

Council has completed several major Capital Works Projects in the first six months of the financial year with several having commenced ahead of schedule.

The completed projects are outlined below.

Kangaroo Ground War Memorial Tower

Works were undertaken to tidy up and improve the access road and carparking area including:

- installation of bollards and chains to define the road and car parking areas;
- planting of seven palm trees and installation of an irrigation system;
- installation of a sewerage treatment plant for the public toilets;
- asphalt surfacing of road and carparking area; and
- erection of a flag pole.

St Andrews Community Project

This is an ongoing project carried over from last financial year when Council completed construction of four new tennis courts, reconstruction of the St Andrews Primary School oval and various works at St Andrews Primary School.

This year a new tennis pavilion is being built which is due for completion by the end December. There will also be an upgrade to the car parking area in front of the tennis club with works including landscaping and rehabilitation around the tennis club and school oval.

Hurstbridge and Diamond Creek Township Strategy

Council has engaged a landscape architect to prepare masterplans for Hurstbridge and Diamond Creek based on the Township Strategies adopted by Council.

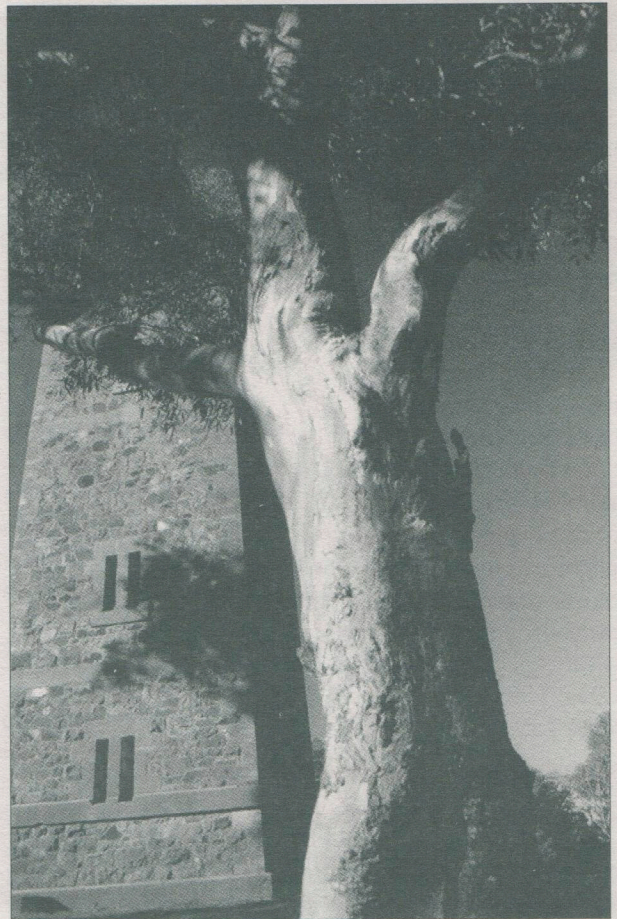
Council will seek community comment on the plans during December and expects to finalise drawings early in 2002. Works will commence in the New Year following completion of the design work.

Pavement Maintenance

As part of Council's ongoing commitment to maintaining the local road network to an acceptable standard, a yearly maintenance program is well underway which includes road patching, sealing and asphalt works.

Rural Road Program

As part of Council's ongoing Rural Roads Construction Program, the Hurstbridge-Arthurs Creek Road from Mines Road to Chapel Lane has been sealed. Works to seal a 1.5 kilometre section of Clintons Road in Pantom Hill to the north of Rob Roy Road commenced in December this year.



Kangaroo Gound War Memorial Tower

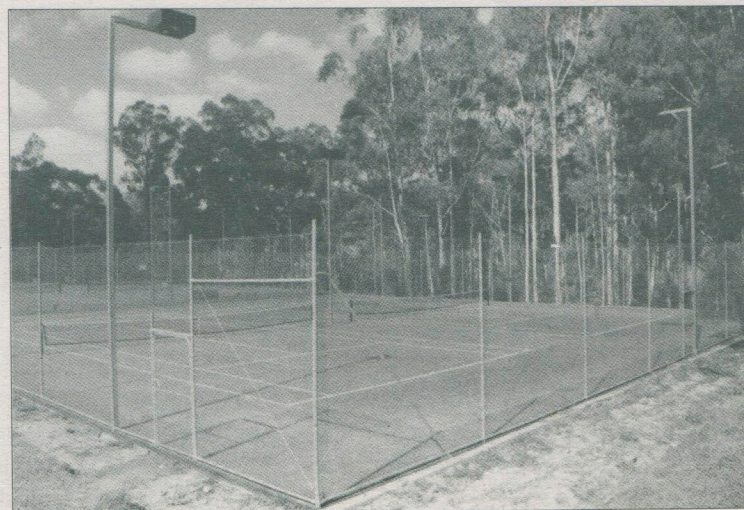
Falkiner Street Wetlands

Design and construction of the wetland area is currently being undertaken. Works have commenced on the planting with earthworks expected to commence early in 2002.

Skate Park

Council is presently holding discussions with local groups regarding the siting and construction of a skatepark in Diamond Creek. It is expected that the park will be constructed early in 2002.

Also currently being organised is the construction of a BMX track on Gipson Street in Diamond Creek.



St Andrews Tennis Courts - part of the St Andrews community project

Traineeships for young people

Nillumbik Council's commitment to providing employment opportunities for young people is paying dividends.

Currently, six young people are employed by Council on work placements as part of a successful scheme that is helping them gain full-time employment.

One trainee, Erin Monagle, has been employed by Council full-time following the completion of her 12-month traineeship.

Erin completed her traineeship in May this year, and was offered a position as a Revenue Officer in the Rates Department.

She said her traineeship at Council has really helped kick start her career.

"I believe this traineeship is one of the best things I could have done. Working with Nillumbik Shire Council has given me a career focus.

"All staff have been supportive during my traineeship period and helped me with anything I needed to know. Without the experience I would not be where I am today," said Erin.

"My time at Nillumbik has also lifted my self-confidence. Prior to working here I was unemployed for five months."

Another trainee, Cadet Engineer Jay Coy, is on a 12 month placement from his Civil Engineering Course at Swinburne University of Technology. Since starting with Council in June this year, Jay has worked with Traffic Engineer, Sally Crew on a range of projects including the design of slow points at Phipps Crescent in Diamond Creek.

"The people here (at Nillumbik) have been very helpful and supportive, which has helped me fit in and make the transition from university to the work environment much easier," said Jay.

As well as the traineeships, Council has also employed a young person on a six month placement as part of the Work for the Dole Scheme.

Men's line established

Men's Line - Australia's first national telephone counselling and referral service for men - aims to provide support for men experiencing difficulties in their relationships with partners, ex-partners, children and step children.

The initiative is a response to community concern at the high rates of suicide, depression, violence and other dysfunctional responses to grief and loss by men.

The suicide rate of men aged between 20-39 years has increased by 70% since 1979 to an annual rate of over 1000.

A common response for many men when faced with separation is to resort to alcohol, drugs, violence and gambling to cope with pain and the changed circumstances that they have experienced. Many withdraw and become inactive leading to deeper despair and poor health outcomes.

Men's Line Australia will work towards overcoming these problems by offering immediate support and assistance to men.

Call Men's Line Australia on 1300 78 99 78 or for information regarding Men's Line Australia, please call the Manager of Men's Line Australia, Terry Melvin, on 9326 8522.

New boat licensing rules

Recent changes to Boat Operator Licensing introduced by the State Government are explained in brochures and booklets available from Council.

Licensing will apply to all operators of recreational powerboats and personal watercraft (jet skis). It will ensure that everyone has at least a basic knowledge of waterway rules and safe boat operation.

It will also ensure that Victorian complies with national guidelines for recreational boat operator competencies.

For more information, contact www.marineboard.vic.gov.au or freecall 1800 223 022.

Roadsides not for selling cars

Nillumbik Council will take enforcement action against vehicle owners who advertise their cars for sale on roadside reserves.

Council recently issued a warning to residents that advertising cars on Council property is an infringement and the by-law will be enforced.

Council's Municipal Laws Co-ordinator, Phil Lovelace, said Council officers will be issuing fines of \$200 to owners of cars that are advertised for sale on roadside reserves or Council land.

He said that a number of residents have complained to Council about people selling their cars in this way saying parts of the Shire look like a used car yard.

"Cars sold in this way are not only an eyesore, but also detract from the business of legitimate car traders," he said.

Communications Survey

The October edition of the *Nillumbik News* featured the results of a communications survey held in August. This edition features further results.

Most respondents (76.4%) preferred to receive Nillumbik News every two months, while 12.7% of respondents wanted every three months. Over half of respondents (52.7%) rated its content as 'somewhat informative' while a further 40% rated it 'very informative'. Just 7.3% said it was 'somewhat uninformative'.

In terms of the mix of stories, 27.3% said they were 'very good', 61.8% said 'reasonably good', 9.1% said 'disappointing' and 1.8% said 'very disappointing'.

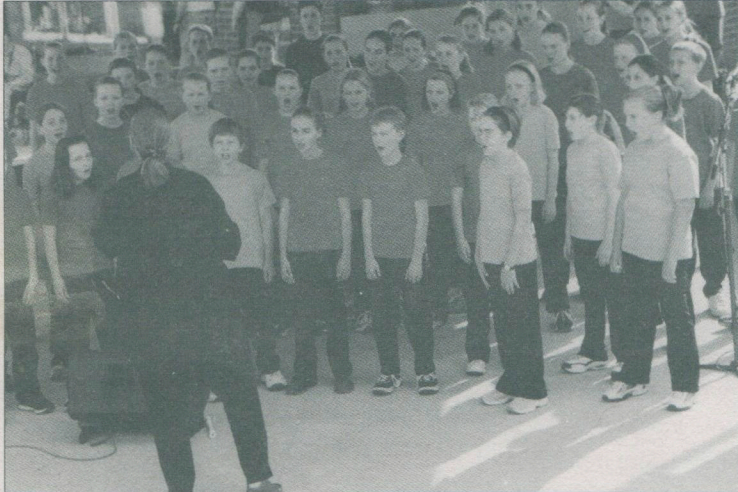
Council's most popular publication was the Community Guide which 81.8% of respondents said they had in their home, while 47.3% said they had a copy of the 'Live Local Plant Local' guide.

Thank you to everyone who participated in the survey - your responses will be used to ensure this publication continues to meet your expectations.

Eltham Town Square opens

About eight hundred people turned out on a perfect evening to be part of the launch of the Eltham Town Square on Friday 9 November.

The opening celebration included speeches by the Mayor, Cr Sigmund Jorgensen, and Eltham Chamber of Commerce President, Frank Lynch, followed by a community BBQ, musical performances and roving entertainers.



The award-winning Eltham East Primary School Choir performing at the opening of the Town Square.

Music was provided by the New Angels of Soul, Thelma's Party, Chocolate Lilies and the Eltham East Primary School, and local acrobats, 'Circus of Chaos' roamed through the crowds performing tricks on stilts and juggling.

In his opening speech, the Mayor said this marks the completion of this major community project that has been talked about within Eltham for over 20 years.

He said: "This Town Square is a fantastic design suited to the Eltham lifestyle and to the needs of this community.

"Credit must go to the wonderful work of the designer, Robert Boyle and his team, and to the artist, Deborah Halpern, for her fantastic creative touches seen in the mosaic and balustrading."

He also thanked the landscapers and construction workers and the Nillumbik Council staff for developing the design brief, coordinating the construction and working very closely with the traders and community throughout the project.

Cr Jorgensen said: "I know the Eltham traders (and indeed the entire Eltham community) have endured quite a lot of inconvenience during the recent redevelopment of the precinct generally and the Square in particular.

"But I think you will agree, the result has been well worth the wait."

The Town Square project was funded by Nillumbik Council to provide a mixed-use community space for people to meet, talk and rest.

Be a responsible pet owner this summer

The needs of domestic pets are sometimes overlooked by pet owners during the summer holiday period. It is important that owners plan how to care for their pets during the holidays.

The number of strays impounded, pets injured or killed on the roads, or perishing at home due to the affects of heat or starvation, can double during the summer months.

Pets of all types need proper care and attention while their owner is away, even if for a short period of time.

Council's Municipal Laws Officers suggest that pet owners consider the following points:

- If going on a day trip ensure ample food, water, shade and shelter are provided.
- An ample supply of water needs to be available 24 hours a day – dehydration can be a killer.
- Ensure fences are in good repair, and gates are shut correctly and locked securely.
- If your dog is a 'jumper', minimise its potential escape launching platforms such as kennel roofs or stacked material.
- Should your dog be a barker, try leaving a radio at low volume in a room nearest to where it sleeps outside the home. A piece of the owner's clothing added to the dog's bedding may also have a calming effect.
- A neighbour may also assist by re-assuring the dog if necessary.

If leaving a dog or cat for a number of days, it is advisable to place them in a boarding kennel or cattery. The wearing of an identification and registration tag will assist in owners being notified if their pet strays.

As an added measure for those taking a dog on a holiday, a special holiday identification tag with the owner's name and holiday address could save a lot of anguish if the animal wanders.

Nominate an outstanding citizen

Do you know of a Nillumbik resident or community group who has made an outstanding contribution to this community and deserves recognition?

Nillumbik Council is seeking nominations for its Australia Day community awards to be presented on January 26, 2002.

Nillumbik Council will present awards to its:

- Citizen of the Year;
- Young Citizen of the Year;
- Volunteer of the Year; and
- Community Group/Business of the Year.

Nomination forms are available by telephoning Council's Communications Office on 9433 3110. Nominations will be accepted until close of business on Friday, 4 January 2002.

Nillumbik Festival of the Arts: 'art, caught in the act' 22 February to 3 March 2002

Nillumbik Shire Council's second Festival of the Arts will be launched on 22 February and will run until 3 March 2002.

The festival is titled 'art, caught in the act' and will promote art in non-traditional venues, pushing society's boundaries and creating an energetic community force.

The ten-day Shire-wide festival will feature performances in alternative settings that are designed to capture the energy of a Shire on the go, encourage audiences to interact and ask questions.

Council's Cultural Planning Co-ordinator, Sonia Turnbull, says the aim of the festival is to increase the visibility of art in the Shire.

"By exposing audiences to art in town centres, on train stations and in schools, we hope to encourage community participation," she said.

Features of the program include:

- Theatre in the Park
- Music in the Park
- The Eltham Jazz Festival
- Open Artists Studios
- Roving improvised percussion musicians
- A poetry installation
- Poetry readings



- Primary schools improvised theatre/performance events

The funny, provocative and illuminating 'Born in a Taxi' will perform where least expected. This captivating four-person Melbourne-based physical theatre group is known for its performances in alternative settings.

As crowds gather at train stations, shopping precincts, parks and schools, the performers will draw from the energy created by the people and place - reflecting it and modifying it, whilst creating its own interpretation of the moment.

"The festival will also provide local artists, performers and musicians, with the opportunity to exhibit and perform in a well supported diverse ten-day program of events," said Sonia.

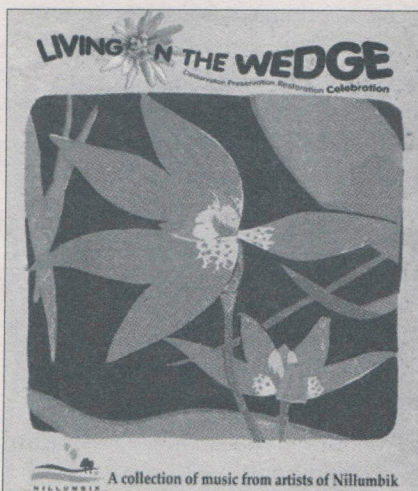
"With community focal points as the backdrop for events, the festival will engage the whole of the Shire providing people with a celebration of the arts. Nillumbik is a vibrant and savvy region, where artistic expression is valued and encouraged.

"This festival will promote an atmosphere of creativity and reinforce the community's expressed beliefs, regarding the importance of art in daily life," she said.

CD with a difference - *Living on the Wedge*

Looking for a Christmas present with a difference?

The *Living on the Wedge* CD is an ideal gift for those who enjoy good music. This unique CD is produced in the Shire, featuring a diverse range of local performers and offering a twist to everyday music.



It showcases local talent including Coco's Lunch, Sebastian Jørgensen, Judy Jacques Ensemble, Invention in Time, Brett Wood, Leslie Avril, Lola's Delight, Eucalpyso, Robbie Greig, Isis, Yemarak, Standard Procedure and the Chocolate Lilies Choir.

All artists volunteered their involvement and provided tracks inspired by life in Nillumbik and the 'Green Wedge'.

Support your local musicians while giving a great Christmas present that will last well after the Christmas wrapping has been recycled.

All profits from the project go to the local CFA brigades.

The *Living on the Wedge* CD is available for only \$20 at the following locations:

- Nillumbik Shire Council office, Greensborough
- Montsalvat, Eltham South
- Rivers Nursery and Café, Plenty
- Volumes Bookshop, Eltham
- St Andrews General Store
- Do Lunch Café, Eltham Library
- Hurstbridge Nursery, Hurstbridge
- Wellers Restaurant, Kangaroo Ground

12 Enviro tips for Christmas

1. Use recycled paper wrapping and do your own decorations using coloured pens or stamps.
2. Send your cards to Planet Ark for recycling by dropping them off at Coles Supermarkets and Video Ezy stores. **PLANETARK**
3. Make sure you place your cut Christmas tree out with your green waste. Or, better still, plant your own Christmas tree in a pot and re-use it each year.
4. After Christmas cheer, recycle your bottles and cans in your yellow-lidded mobile recycling bin. If having a picnic reduce the amount of waste by taking washable containers from home.
5. Place your garbage and recycling bins out for collection only if they are full. If you have a 120 litre recycling bin and it's too small, why not contact the Council and swap it for a 240 litre bin so that you can recycle more?
6. Compost your Christmas food scraps or feed them to the worms. Nillumbik Council sells compost bins and worm farms at cost price, and they make a great Christmas present!
7. When you get to your holiday spot, identify public place recycling and litter bins - and use them. Remember, when you litter the streets, you litter the bay, beaches and waterways too.
8. If you're a smoker, make a New Year's resolution to stop. It's bad for you and the environment. Dispose of your cigarette butts in litter bins or take a personal ashtray with you. Butts thrown on the street end up in our drains and creeks.



9. If Fido is joining the holiday, remember to take a bag while walking and clean up after him. Dog waste can be put in your compost bin or worm farm.
10. Have your car tuned before heading off for the holidays to minimise air pollution and fuel consumption.
11. Report litter offences to the EPA's litter hotline on free call 1800 352 555 and keep Nillumbik clean and green.
12. Think about purchasing environmentally friendly Christmas presents such as:
 - a battery charger and rechargeable batteries;
 - a shower timer from Yarra Valley Water to reduce shower times and excessive water usage;
 - mulch for the garden to assist water retention and reduce water usage;
 - furniture products made from recycled materials;
 - appliances and products that include a disposal plan (eg some white goods are coded for recycling and some mobile phones have a battery take-back service); or
 - a second-hand product that has been spruced up or repaired.

Neighbourhood Character Study out for comment

Nillumbik Council is proposing several amendments to the Nillumbik Planning Scheme in order to implement the recommendations of the Shire's Neighbourhood Character Study, adopted in September last year.

Known as Amendment C12, the proposed changes are currently on public exhibition and take account of the provisions of the State Government's new code for residential development, ResCode.

The Neighbourhood Character Study separates the Shire's residential areas into 19 character precincts. A brochure relating to each precinct describes the current and preferred future character of the precinct and provides specific design guidelines to ensure that new residential development contributes to, rather than detracts from, this character.

The precinct guidelines were developed by Council in conjunction with the community during 2000, and community comment on a draft Neighbourhood Character Study was sought during July 2000.

The Study and the development of the residential design guidelines reflect community and Council concern over the nature of some recent residential development and a desire to retain the unique character of Nillumbik neighbourhoods.

The amendment will introduce a Neighbourhood Character Policy as a Local Policy in the Planning Scheme. The Policy will apply to any proposed development in an area covered by a character precinct and which requires a planning permit, and will be used to assess planning permit applications for new subdivisions and

residential development.

Council has written to 14,700 Nillumbik landowners affected by Amendment C12 advising of the changes and detailing the consultation process.

Amendment C12 is on public exhibition until 21 December, and Council is inviting submissions relating to the details of the proposed amendment during this period.

The Amendment and accompanying maps and studies are on display at the Shire Office in Greensborough, the Eltham Library, Allwood House in Hurstbridge and the Diamond Creek Community Centre.

For further information on the Neighbourhood Character Study and exhibition process, please contact Council's Housing Project Officer, Ms Julian Golby, on 9433 3215.

Plans to revive St Andrews Market site

The well-known and much loved St Andrews Market site is due for a major face-lift following an injection of funds from Nillumbik Council and the State Government.

Nillumbik Councillor Neil Roberts said the re-furbishment of the site will be the re-birth of the St Andrews Market.

“We are keen for the market to provide a special space in prime locations for the exclusive use of the local people so that the market can return to its original origins”, he said.

Council officers have developed a masterplan for the market site, which is situated on Department of Natural Resources and Environment land. The masterplan includes landscaping and drainage works to combat erosion and soil compaction problems. The proposed improvements market precinct will enhance the functionality of the market and reduce the impact of parking, poor drainage and the loss of vegetation.

The overall objective is to ensure the future viability of the market by ensuring the natural setting is protected and the rural atmosphere is maintained.

The cost of the project will be met in part by funds collected from stall holders to contribute to revegetation of the site. Council will contribute further funds under the ‘St Andrews Improvement Works’ and the State Government has pledged \$60,000 through its *Living Regions Living Suburbs* program.

The proposed design has been developed by Council in conjunction with representatives of the Market Committee, Smiths Gully Landcare Group, nearby residents and the Nillumbik Reconciliation Group.

Full colour Design Drawings will be on display until Wednesday 9 January 2002. The drawings are located at the St Andrews Hall and will be available for viewing on Market Staurdays. Copies of the drawings will be displayed on the outdoor noticeboard at the market site, and numerous other prominent locations throughout the St Andrews area.

For inquiries about the proposed upgrade, please contact Council’s Landscape Architect, Brooke Ryan, or Environment Officer, Damian Closs, on 9433 3111.

Project works are expected to commence in March 2002 and are expected to be completed by June 2002.



Cr Neil Roberts inspects drawings for the St Andrews Market site.

Integrated Transport Strategy seeks less car usage

Nillumbik Council at its December meeting is expected to adopt an Integrated Transport Strategy that addresses transport provision needs across the Shire.

The strategy will provide broad strategic direction on integrated transport related issues for the foreseeable future.

Whilst the strategy recognises the existing car dominant travel patterns of Nillumbik residents, it also seeks to slow the car-based traffic usage and encourage a mode shift to public transport, walking and cycling.

Where possible, the strategy seeks to optimise existing infrastructure and services and to promote the availability of alternative forms of transport.

Among the recommendations of the strategy are the:

- Provision of genuine transport option choice;
- Improvement of the pedestrian and bicycle network length and

connectivity to meet community needs and expectations and therefore attract more use;

- Increase in the cover and quality of public transport, and particularly its visibility;
- Development of information strategies and travel monitoring to encourage travel-related behaviour change;
- Development of residential allotment layouts, with sufficient continuity in the street network, making on-demand bus and vehicle hire services a possibility; and
- Creation of attractive and interesting destination nodes and access routes to attract people to allocate time to their journey and stay longer in environments without using cars.

Council officers are now developing action plans to implement recommendations from the strategy.

The action plans will be used in applications for funding from internal and external sources and to advocate for improvements from other agencies such as public transport providers.

Eltham Festival Album

Four days of fun at the festival 'Living on the Wedge'

Approximately 25,000 people enjoyed four days of fun and entertainment at the 2001 Eltham Festival - Living on the Wedge.

The Thursday evening Arts Forum titled 'Is Individuality an Art Form?', and held at Montsalvat featured artists Judy Jacques, Barry Dickens, Franciscus Henry, Vali Myer, Jenny Bannister and Shane Pugh. They each shared their experiences and insights on what makes people different. A feast, courtesy of Dynamic Vegies in Eltham and Evelyn County Winery, followed the forum.

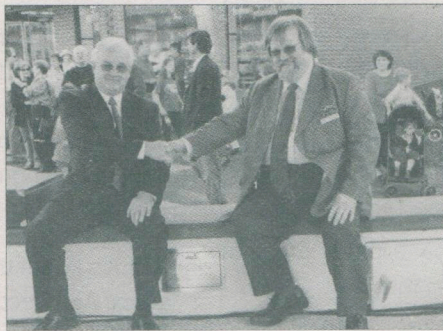
About 800 people attended the community BBQ and enjoyed the entertainment at the launch of the Eltham Town Square on Friday evening. Entertainment was provided by the New Angels of Soul, Thelma's Party, Chocolate Lilies Choir and the Eltham East Primary School.

Saturday's Edendale Farm program featured a strong environment theme with free workshops, wholesome food and refreshments, unique entertainment, kid's activities, school displays and informative guest speakers. Once again, the mix of environmental information and children's activities proved popular.

The final day of the festival at Alistair Knox Park featured stalls, rides, bands, performers, sideshows and community group displays. Headline acts included well-known jazz musician Vince Jones and ARIA award winner John Butler.

The fireworks finale at 8.30pm was accompanied by a ten piece didgeridoo, percussion and voice choir.

Town Square



Frank Lynch from the Eltham Chamber of Commerce and Mayor, Cr Sigmund Jörgensen, celebrate the opening of the Town Square.



Circus of Chaos

Thelma's Party



Edendale Farm



Ross & Wendy Mather spread the permaculture message



Teddy Parade winners



David Holmgren presents a workshop



GIT

Alistair Knox Park



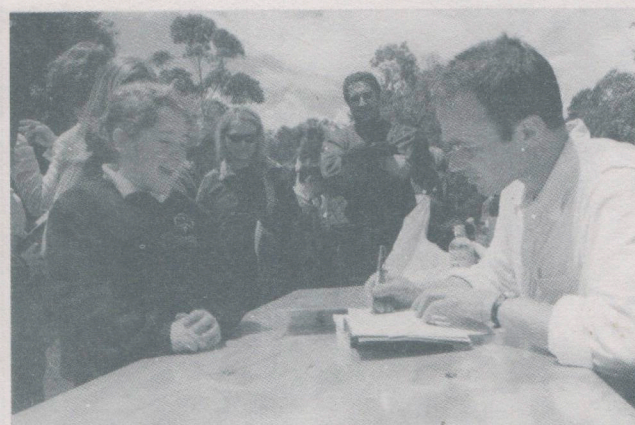
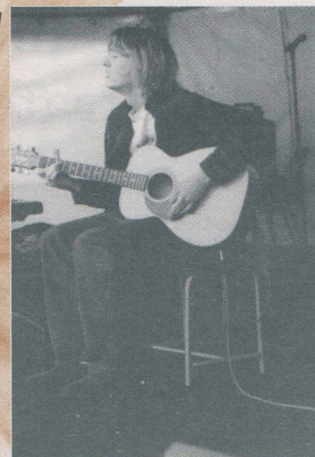
African drumming workshop



Sound sculptures



Brett Wood



Andy Griffiths - The Day my Bum Went Psycho!



John Butler



Collards Greens & Gravy



Vince Jones



Racing to Create

Sound sculptures



Rural connector roads strategy

Nillumbik Council has developed a strategy to prioritise the sealing of rural roads in the Shire.

Known as the Rural Roads Connector strategy, it is designed to ensure that road maintenance priorities in the non-urban areas are directed at areas of greatest need and greatest usage.

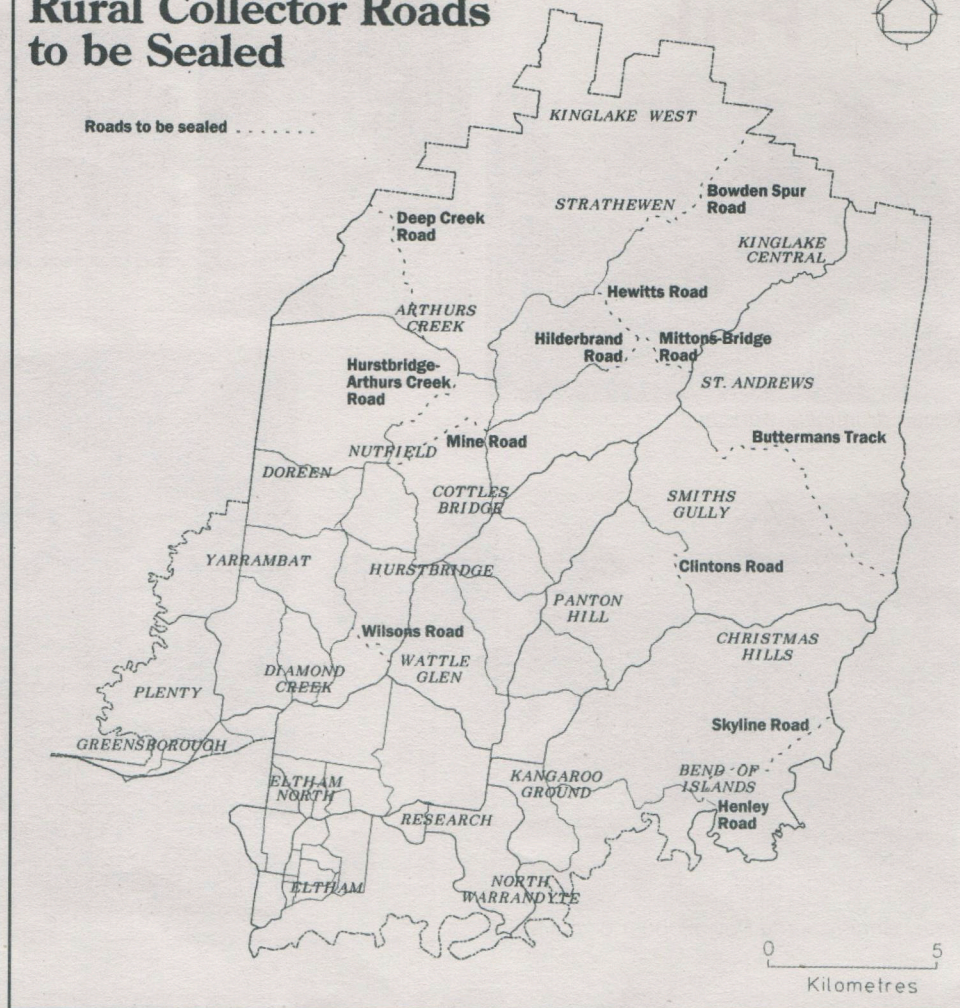
This approach to road funding reflects Nillumbik's position as an urban-fringe municipality with a mix of urban and rural roads.

Council has decided to split the collector road classification into two distinct categories: (a) Urban Collector roads and (b) Rural Collector roads.

This was done because the Urban Collector classification fails to adequately describe the function of many rural roads which tend to carry significantly lower traffic volumes than urban roads and also distribute traffic over a wider area.

Council expects to construct the roads identified in the strategy over the next 20 years.

Nillumbik Shire Council Rural Collector Roads to be Sealed



Roundabout funding for Diamond Creek

Funding of \$400,000 has been obtained for a roundabout at the intersection of Main Hurstbridge Road and Phipps Crescent in Diamond Creek.

The application for the funding through the Statewide Blackspot Program was developed following a meeting instigated by the Diamond Creek East Primary School and the Diamond Valley

College. The meeting was attended by Andre Haermeyer MP, Council officers and representatives from VicRoads.

The roundabout will help define the "school precinct", slow down traffic past the two schools and provide an area where buses can turn, enabling students to be dropped-off on the school side of the road.

Cyclists will also be provided with a protected lane and the kerb outstands will provide greater protection for parked vehicles, while giving the road a narrower appearance.

An application was also submitted for a roundabout at the intersection of Perversi Avenue and Main Hurstbridge Road in Diamond Creek.

This location did not meet the criteria for the Statewide Blackspot Program funding, but is still under consideration for funding through the Potential Blackspot Program.



Cr Tony Raunic at the corner site of Phipps Crescent and the Main Hurstbridge Road.

Community Fireguard helps prepare for fire

With summer just around the corner, people are already gearing up for fire season.

Over 90 people attended a Community Fireguard breakfast organised by Council in partnership with the Country Fire Authority Regions 13 & 14 at the Kangaroo Ground Operations Centre on 10 November. Those attending were briefed on weather conditions conducive to bush fire and the CFA's summer program.

Council's Emergency Risk Co-ordinator, Norm Golgerth, said the speakers talked about their experiences when faced with fire.

"Whilst all the speakers had prepared themselves and their families with bush fire plans, when faced with an emergency some of the best thought-out plans didn't work," he said.

"What was common with all the speakers was that Community Fireguard does work. They all said that participants feel more in control of their own destiny and more confident in being responsible for their own safety."

Community Fireguard Co-ordinator for Yarra Area, Nan Oates, said she had received feedback that the real life experiences had had an impact on attendants.

"The forum gave people the opportunity to ask questions and discuss issues surrounding bush fire preparation and what to do in an emergency. It also provided an opportunity for people to build networks," she said.

For more information on Community Fireguard phone Emergency Risk Co-ordinator Norm Golgerth on 9433 3309.

Plenty Valley FM live broadcasts

Plenty Valley FM commenced live broadcasts of Nillumbik Council at its 20 November meeting.

The broadcast goes to air at 7:30pm and runs until 10pm on Council meeting nights where the meeting is held in the chamber at the Shire office.

Live broadcasts may not be possible when Council meets at other venues around the Shire.

Nillumbik Mayor, Cr Sigmund Jörgensen, said this is another initiative to improve the information flow between Council and the community.

Plenty Valley FM is a community radio station broadcasting on 88.6FM. During fire season, the station provides updates on essential emergency information.

Planning for bush fire this summer

With the long hot summer upon us, it is critical that residents plan for a possible bush fire.

Bushfire planning is the key to survival.

Planning is the best defence against bush fire. The best way to protect your family and home this summer is by preparing your property and developing a personal survival plan for days of high fire risk.

You and your family

- Keep doors and windows shut to keep smoke out of the house
- If outside, wear a dustmask or damp handkerchief to reduce the amount of smoke you inhale
- Wear goggles to help protect your eyes from smoke
- Wear fire resistant clothing such as heavy boots, woollen jumpers, cotton overalls etc
- Keep a battery-powered radio on hand and listen to Plenty Valley FM (88.6FM) or 3LO for emergency information

Your property

- Don't leave timber or rubbish lying around the house
- Keep areas around and under the house clear of combustible materials, including doormats and outdoor furniture
- Ensure grass around the house is maintained
- Remove branches overhanging the house or out-buildings
- Block downpipes and fill gutters with water
- Prevent embers from entering the roof space or building
- Ensure you have a reliable water supply
- Keep a torch available for use

To obtain a brochure with more information on bush fire survival contact Council on 9433 3309. Alternatively, visit your local fire brigade, use the Nillumbik website and see the Bushfire Survival information or follow the links to the CFA website.



Cellar Doors come to Montsalvat

The inaugural Yarra Valley Cellar Doors come to Montsalvat was held at the Barn Gallery on October 7.

Approximately 2000 wine enthusiasts sampled wines from eight local wineries, with the number of attendees far exceeding the expected 500.

Families brought picnic lunches and a blanket, purchased a bottle of wine and lunched on the lawns. Cellar Door was a great opportunity for many locals and visitors to the region to experience the local wine.

Next year's event will be held on the weekend of May 4 & 5. Make a note in your diary - it's not to be missed.

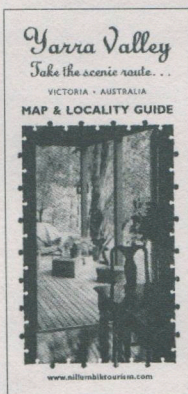
Visitors for Christmas?

A comprehensive guide highlighting where to stay, where to eat and what to do has been published by the Nillumbik Tourism Association.

This guide is a 'must have' if family and friends are visiting over the Christmas break.

Call into to any of our Visitor Information Centres listed below for your free copy or phone the visitor hotline on 1300 660 072 and we'll pop one in the post for you!

- Do Lunch Cafe, Eltham
- Eltham Wiregrass Gallery, Eltham
- Rivers Garden & Home Centre, Plenty
- Hurstbridge Nursery, Hurstbridge
- Montsalvat, Eltham
- St Andrews General Store, St Andrews
- Wellers Restaurant, Kangaroo Ground



L-R Bindi Gove from Country Victoria Tourism Council, Cr Sigmund Jorgensen, Deb Ganderton from Nillumbik Shire Council, Andrea Roberts from YVDTR Tourism Board, and Martin Wright from the Nillumbik Tourism Association enjoying a drop of local wine.

Nillumbik business leads the way

Tourism businesses in Nillumbik are leading the way in the region by embracing the concept of accreditation and then getting on with business.

Two sell-out workshops have been conducted by Better Business Victoria for Nillumbik Tourism Association members and further workshops are planned for February and May 2002.

Tourism Victoria has stated that tourism operators who are not accredited by 2003 will not be able to participate in any Tourism Victoria funded promotions.

Ask not what your Association can do for you!

It is the season of Annual General Meetings, and it would be wrong not to acknowledge the commitment and generosity of the many business people who nominate and serve on the local tourism and traders' associations.

Their main role is to contribute to business and marketing strategies and to encourage others to work cooperatively to deliver more jobs in the region.

Council appreciates the partnership approach to our economic development and wishes each Committee every success in the achievement of their goals.

Artists Open Studios

The weekend of 17 and 18 November saw seventeen artists from across the Shire throw open the doors to their studios and welcome art enthusiasts into their world.

Why? It was part of the 14th annual Artists' Open Studios program, presented by Nillumbik Shire Council, and held as part of the Eltham Festival.

The studios were located at Eltham, Diamond Creek, St Andrews, North Warrandyte, Kangaroo Ground, Bend of Islands and Strathewen.

The participating studios offered a wide range of art and craft including painting, drawing, sculpture, printmaking, ceramics, textiles and jewellery.

The weekend provided a great opportunity for visitors to view the work of talented local artist and to purchase unique hand-crafted objects, works on paper or paints.

Some studios offered workshop activities, while others provided entertainment and a festive atmosphere.