

Nillumbik

July 2006

news

2006-2007 Budget
the highlights
pages 2-3

Nillumbik talkback
- information enclosed

Have your say!
Nillumbik News
survey enclosed

Council contacts:

Nillumbik Shire Council
Civic Drive (PO Box 476)
Greensborough 3088

Telephone: 9433 3111
Facsimile: 9432 9559
Depot: 9436 3555
Email: nillumbik@nillumbik.vic.gov.au
Website: www.nillumbik.vic.gov.au

Shire offices:
Civic Drive, Greensborough
Monday 8.30am-6.30pm
Tuesday to Friday 8.30am-5pm

Recycling & Recovery Centre
hours of operation:
290 Yan Yean Road, Plenty
Friday-Monday 8am-4pm, and closed
all other days and on public holidays.
Telephone: 9436 3555

Nillumbik News is available in alternative formats upon request. Contact Communications on 9433 3105 or email Barb.Whiter@nillumbik.vic.gov.au. A large format Word version is available on CD by request to the Customer Service counter at Nillumbik Shire Council offices, Civic Drive, Greensborough.

Nillumbik News is published as part of Council's commitment to improving communication and consultation with residents. This publication is published five times per year and is delivered to all ratepayers (and other residents by request). It is also available at libraries and community information stands throughout the Shire.

This publication is printed in Nillumbik with vegetable inks on 100% recycled paper.



Contents

2006-2007 Budget – the highlights	2, 3
Environment (natural, built and cultural) stories	4, 5
Health and wellbeing stories	6, 7, 8
Governance and community engagement stories	9
Calendar of events	10
In brief...	11, 12
2006-2007 Budget cont.	12
Councillor contacts	12



2006-2007 Budget

What have we done?

Nillumbik's 2006-2007 Budget builds on the work we have done last year to face the challenges of:

- our financial structure
- our infrastructure maintenance needs
- diminishing government grant income (which has to be made up from rate revenue) and increases in costs
- meeting our obligations e.g. Plenty landfill rehabilitation and day-to-day services expected of local government.

These challenges still exist.

In the past year we conducted nine community workshops in townships across the Shire in December 2005, February and March 2006. We also sent a six-page survey to 20,000 families in Nillumbik inviting them talk about what they feel are the most important issues Council should be focussing on over the next three to four years. Over 2,100 survey responses were received.

The feedback from our consultation was residents want Council to 'do more' on the environment, neighbourhood character, community assets and transport and traffic. We must ensure our obligations for day-to-day services are met.

Financial planning

Council needs to ensure it has an adequate revenue base to:

- meet the needs of the Nillumbik community
- look after Nillumbik's assets properly
- deliver on the key projects which the community is entitled to expect.

2006-2007 Budget

The Budget has responded by delivering a moderate growth in services, infrastructure renewal and maintenance and by beginning to deliver on key projects.

The following shows some highlights by priority areas of environment, transport and traffic, services, capital works and key projects.

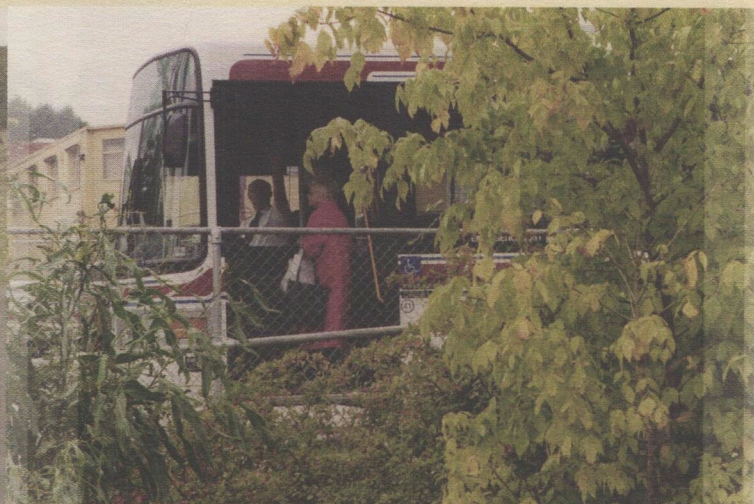
Environment

Strategic planning activities:

- completion of the Green Wedge Management Plan
- \$214,800 to protect our Green Wedge and neighbourhood character planning

On-the-ground activities:

- A waste management system delivering an annual hard waste collection, high recycling rates including green waste and rehabilitation of the Plenty landfill.



highlights

- \$50,000 each for addressing litter problems, and for tackling graffiti
- \$350,000 for weeds programs
- \$83,000 for detailed design for Edendale Farm Community Environment Centre improvements.

Transport and traffic

Nillumbik's Blackspot Program

Council is committed to addressing high priority Blackspots in Nillumbik:

- Bolton Street, Eltham – \$170,000 for footpaths and pedestrian lights.
- Main Road/Elizabeth Street, Diamond Creek – \$110,000 full traffic signals.
- Aqueduct Road, St Helena – \$75,000 (half cost of project) pedestrian traffic lights near St Helena Shopping Centre (City of Banyule).
- Main Road, Research – Contribution of \$150,000 towards traffic lights.
- Plenty River Drive/Diamond Creek, Greensborough – Road traffic lights. Council has collected \$150,000 from developers and will contribute an additional \$125,000. Project cost \$450,000 – balance from VicRoads.

Advocacy

The Victorian Government's Transport and Liveability Statement promises \$1.3 billion over the next ten years to improve arterial roads in the outer suburbs. We will work closely with VicRoads on priorities for Nillumbik including:

- Civic Drive roundabout improvements (safety and capacity)
- Fitzsimons Lane roundabout improvements (safety and capacity)
- Main Road/Cecil Street/Diamond Street, Eltham signalisation

Services

- \$183,000 for improvements to major leisure facilities including Yarrambat Park Golf Course and Diamond Valley Sports and Fitness Centre
- \$120,000 for works at preschools, child care centres and Edendale Farm Community Environment Centre, libraries and living and learning centres
- \$25,000 Hohnes Road Playhouse
- \$110,000 increased library funding
- \$10,000 extra for youth programs
- \$10,000 On the Hill Festival, Pantom Hill
- \$24,000 extra for community grants program

Capital works

Infrastructure

- \$145,000 Research Shopping Centre improvements
- \$32,000 Main Street, Hurstbridge footpath completion
- \$900,000 roads maintenance
- \$160,000 footpath maintenance
- \$309,000 new footpaths Eltham North, Diamond Creek, Plenty, Yarrambat
- \$145,000 public toilets upgrades Eltham, Eltham North, St Andrews

Open Space

- \$90,000 to commence Plenty Oval drainage upgrade
- \$56,000 Research Park improvements
- \$35,000 for archery club improvements in Yarrambat Park (\$17,000 Council contribution)
- \$400,000 Diamond Creek North Open Space upgrade (Brownlow Drive)

Recreation trails

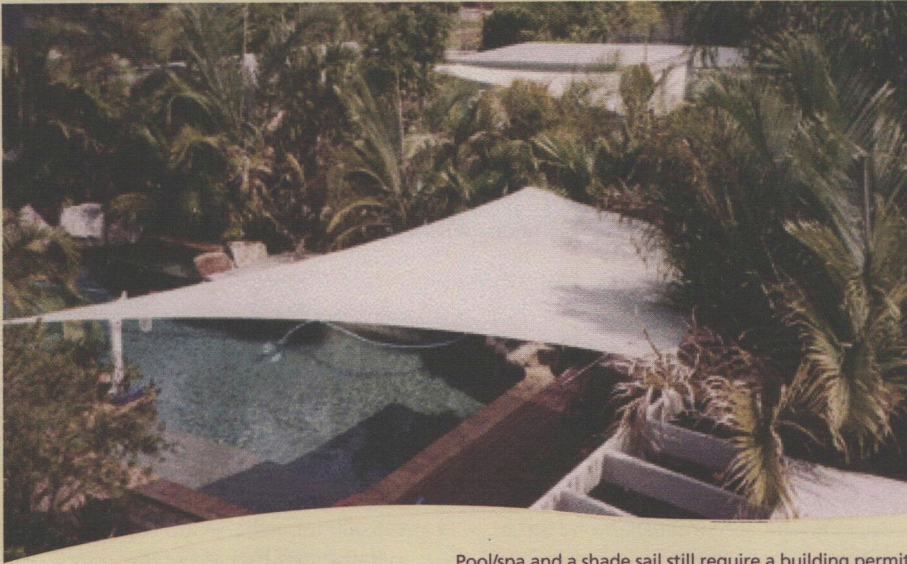
- \$60,000 Aqueduct Trail, Research
- \$50,000 Diamond Creek Road (Civic Drive – Plenty River Drive)
- \$60,000 Maroondah Aqueduct Trail scoping study

Key projects

- Diamond Creek twenty20 project implementation – \$150,000
- Hurstbridge Secondary College site – \$1 million to conclude acquisition
- Eltham Leisure Centre redevelopment – \$1.3 million for Stage 1 upgrades.
- Plenty landfill – \$779,000 towards an overall cost estimated as \$3.4 million.
- Kangaroo Ground Preschool – \$74,000 to complete the project
- Eltham Structure Plan implementation – \$100,000 detailed design feasibility. Commence construction of circulatory road (\$300,000).
- \$710,000 Eltham Central Oval complete reconstruction \$355,000 Watersmart funding.

... continued page 12

Environment (natural, built and cultural)



Pool/spa and a shade sail still require a building permit.

Hot building topics

The \$5000-no-permit myth

Before you begin a building project, regardless its size or cost, find out whether a building permit is needed. Do not rely on advice from anyone but a registered building surveyor because you may end up with a building which, not only does not comply with the regulations, is actually illegal. Remember too that illegal work devalues your property. If you are not sure if you need a permit or not, Nillumbik Environmental Building Surveyors (NEBS) on 9433 3243.

Council's building services unit

Nillumbik Environmental Building Surveyors (NEBS) is a unit of Council which offers courteous, consistent and professional building surveying services

to our ratepayers and the general public. NEBS delivers an efficient, price-competitive building permit service. Our priorities are to ensure your project is technically specified and built to current building requirements. By involving us from the beginning of your project, you will receive a no-nonsense approach to your specific building needs during preparation, approval and construction phases.

So, if you are preparing your new building project, don't let others decide who will issue your building permit; talk to us for a quote and take advantage of our experience and great wealth of local knowledge. We will be happy to assist with your enquiries on 9433 3243.

New building regulations have just arrived!

Building regulations control the design, construction and use of buildings and places of public entertainment. The new *Building Regulations 2006* are now in place.

Some requirements have been introduced and or varied, especially in the field of maintenance of essential safety measures in buildings other than a private dwelling. For more information on a regulatory building topic, please visit the Building Commission's website at www.buildingcommission.com.au, or call Nillumbik Environmental Building Surveyors (NEBS) on 9433 3243.

Permit exemptions – which permits?

When renovating your home or building on your property, you will probably need to obtain two permits – a planning permit and a building permit. Always check directly with Council about whether you need a planning permit.

The Victorian Government has recently announced changes to Victoria's planning permit system. However, these changes do not apply to the requirement of obtaining a building permit. Some works may get a planning exemption, however, a building permit will still be required in the great majority of cases.

Building permits are issued by a building surveyor to ensure the proposed building work complies with all building regulations, including safety requirements.

Property information updated

Several new features have been added to the Maps online feature available from www.nillumbik.vic.gov.au. Access is via the green leaf Maps online and now you will get property address, Ward, waste collection day, road grading area, plus the new features of area and distance measuring available from the toolbar. For enquiries please contact Council's GIS Team on 9433 3164 or email the team on gis.team@nillumbik.vic.gov.au.



**NILLUMBIK
ENVIRONMENTAL
BUILDING SURVEYORS**



Nillumbik Shire Mayor, Cr Greg Johnson, congratulates the winners of the three categories of the Alan Marshall Short Story Award for 2006, and thanks Sigmund Jorgensen, who read the Judge's Report on the night.

Who are the winners?

Each year Nillumbik Shire Council invites contemporary Australian writers to enter a short story in the Alan Marshall Short Story Award. This annual national Award is held in memory of the great Australian writer and former resident of Eltham, Alan Marshall. In its twenty-first year the Award again generated interest and entries from writers across Australia.

This year 379 entrants vied for places in the three categories: the Open Section with a \$2,000 award; the Local Section with a \$1,000 award; and the Young Writers Section with a \$400 award.

The recent presentation of the Awards ensured Council and the wider community sat in appreciation as actors Dennis Coard and Debra Lawrance shared the role of reading the winning stories.

Nillumbik Shire Mayor, Councillor Greg Johnson, presented the prizes. The winners were Carlie Jennings with *White Sheets* who won the Open Award; Steve Holden with *What to have done, what not to have done* for the Local Award, and Georgia Dimopoulos with *Voyage of discovery* for the Young Writer's Award.

The three stories are able to be read online at www.nillumbik.vic.gov.au.

Keep the home fires burning... brightly

With winter upon us, most people will agree that there is nothing better than settling down in front of an open fire on cold, wet and dreary nights. But before you do so, can we suggest some tips for reducing smoke and improving air quality?

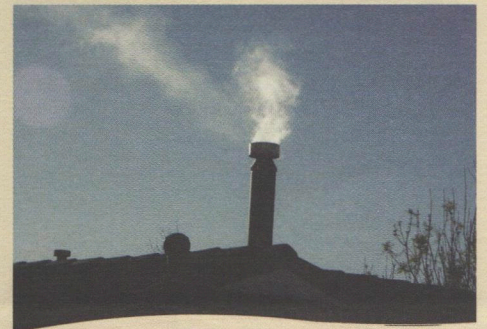
Smoke from domestic wood heaters and open fires is the main source of air pollution in Victoria during the autumn and winter months. The best way to improve air quality is to reduce the use of your wood heater or open fire on still days.

To help reduce the amount of smoke and pollution residents should:

- burn dry, seasoned, untreated wood
- never burn plastics or other materials
- get a hot fire going quickly with plenty of paper and small kindling
- use smaller logs instead of large logs
- keep the air controls set high to keep your fire burning brightly
- never leave fires smouldering overnight
- never overload the wood heater by placing too much wood in the fire
- check your chimney or flue for smoke at least once per fire.

Did you know? >>

To tell if wood is dry/seasoned, bang two pieces together. You should hear a loud, hollow crack. Or tap the wood with a key or coin. Dry wood makes a sharp resonant sound. Wet wood makes a dull sound.



Don't let smoke from your chimney ruin your relations with your neighbours and create air pollution – check it regularly – every fire is best!

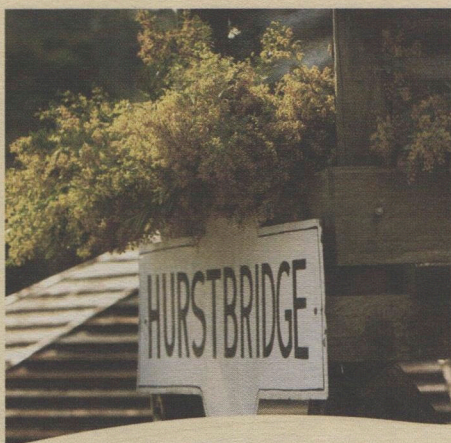
For more tips on improving air quality or to find out what to do if your neighbours have excessive smoke coming from their chimney, visit www.nillumbik.vic.gov.au or www.epa.vic.gov.au. Council's Public Health Services can investigate claims of excessive smoke – ring 9433 3340.

Did you know? >>

One of the worst things you can do is dampen down your fire and let it smoulder overnight. To keep your house warm overnight – at least half an hour before you go to bed:

- Reload your heater with good quality wood.
- Run it on a high burn rate for 25 minutes.
- Turn the heater down but ensure a visible flame is maintained.
- Never shut the air flow right down. Turning the air supply right down does not gain you any advantage, because the wood will only smoulder, creating little heat and a large amount of wood smoke.
- Let the fire burn itself out overnight.

Health and wellbeing



Hurstbridge loves their Wattle Festival – put the date in your diary now – Sunday 3 September.

Hurstbridge news...

Expect to hear more about the services and attractions offered by Hurstbridge shopping centre over the next few months. A special charge scheme has recently been declared for the Hurstbridge shopping centre, and plans are well underway for this year's Wattle Festival.

In 2003 the Hurstbridge Traders Association prepared a business plan which outlined strategies to increase the numbers of locals shopping in Hurstbridge and to attract greater tourism to the town. The Association recognised that it needed a secure source of funding to achieve their goals. After consultation with traders in the town, the association approached Council to ask for a special charge to be levied to raise funds for marketing and promotional purposes.

The special charge will raise over \$20,000 per year for the Hurstbridge Traders Association to undertake promotional activities such as a business directory, a website, Christmas promotions and local advertising campaigns, and to assist with the coordination of the Wattle Festival. The scheme will operate from the start of the new financial year.

The Wattle Festival committee has been hard at work organising for this year's event on 3 September. The key attraction of the event, the steam train, has been booked and stalls and activities are being organised by various committee members. For more information on the event go to the website www.wattlefestival.org.au.

Working together

Are you one of Nillumbik's most welcoming and friendly businesses?

We would like to hear from traders interested in working with Council to produce a calendar for 2007, showcasing local business and the Nillumbik region. The calendars will promote each participating business. You may choose to use these calendars as a promotional tool, or have them distributed across the Shire to over 30 community organisations. Our aim is to let people with a disability and their friends/families know who are our most welcoming and inclusive businesses.

All photos and content will be designed to promote the Nillumbik region, while depicting the warm, special relationships

many businesses share with their customers. Nillumbik's sense of community is one that makes living, working or visiting Nillumbik such a unique experience. And given that over 30% of our community experience some form of disability or mobility issue, being more welcoming and inclusive makes good business sense.

There are many different types of disability, so even if your business isn't fully physically accessible to people with mobility issues, (e.g. people who use wheelchairs, walking frames or parents with prams) the fact you offer a welcoming and friendly environment can make a huge difference to people feeling comfortable choosing your business.

Please contact MetroAccess Officer Angela Lampard on 0438 009 672 or email Angela.Lampard@nillumbik.vic.gov.au to get involved.

What is Crystalscape?

In November 2005 Council's Youth Services were contacted by staff from Eltham Library regarding young men who were congregating at the library and playing *Runescape*, a computer game. It's an interactive game which occasionally was too noisy for both staff and library users.

However, staff at Eltham Library were keen to provide a safe environment for the young men where they were able to use the facilities more appropriately and remain connected to the library community.

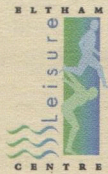
By engaging and consulting with the young men, a group of interested game users was formed. In partnership with staff from Council's Youth Services, Nillumbik Community Health Service and the Salvation Army, they developed a six-week project resulting in the development of Crystalscape: a website which assists other users to play *Runescape*. They also set up a roster system of 'experts' for the day, which will mean new users of the computer game can ask for help if they need to.

This project is a great win for the young people involved, the Eltham Library, Council's Youth Services and the community.

Contact Deb Ruiz-Dove, Youth Services Project Officer, on 9433 3190.

Eltham Leisure Centre redevelopment

As many residents will be aware, Council has been working to develop plans for the redevelopment of the Eltham Leisure Centre.



Stage 1 will redevelop the Centre's health club and child care facility (expansion and relocation), remodel the entrance, reception, cafe and foyer area and upgrade the change rooms, incorporating improved accessibility design throughout. A dedicated multi-use room is being created and car parking facilities will be increased.

Residents can be kept up-to-date with progress via looking at the Centre's project noticeboards, by visiting www.nillumbik.vic.gov.au or ringing Sharon Frosi, Leisure and Recreation Administration Officer, on 9433 3161 to be added to a project bulletin mailing list. Every effort will be made to stage the works to ensure disruption to services and member inconvenience will be minimised.

A number of consultations with Centre members and users have occurred throughout the planning stage. Community information sessions were held and the YMCA were involved as managers of the facility.

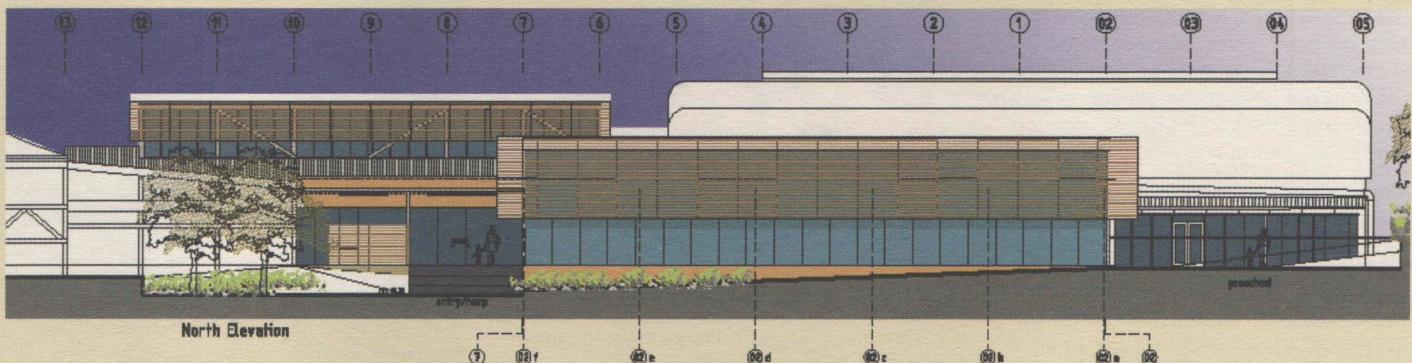
The \$3.95 million redevelopment project includes funding from Sport and Recreation Victoria (\$500,000) with the balance coming from Council. The next step in the project is Council planning approval and, once this has been obtained, we can start the ball rolling for the construction to commence – at this stage, in November.

Redevelopment highlights:

- **Relocated and enlarged gymnasium** – the gymnasium will be relocated to the front of the centre, and the area will be almost doubled. Additional equipment will complement the new space.
- **Remodelled entrance** – a new entry will be more accessible, incorporating a lowered level to keep all areas in the facility at a similar height in order to remove unnecessary stairs and obstacles.
- **New café and foyer** – the new design incorporates an impressive foyer and café area.
- **New change rooms** – the existing dry and wet change areas near reception will be upgraded – improving accessibility, functionality, and water efficiency of the areas.
- **New meeting and program room** – the current meeting room will be replaced by a larger and more flexible space upstairs.
- **Administration area** – staff and administration spaces will be incorporated into the new design.
- **New child care/creche** – a bigger crèche area with outdoor play area will be created in the new design.
- **Increased car parking** – an additional 60 car parking spaces have been proposed in the plans to accommodate the forecast membership boost.

Budget fact >>

Council has budgeted an extra \$1.3 million to complete funding of this vital community redevelopment.



An architect's view of the new north-facing side of the Eltham Leisure Centre redevelopment.



Eltham High School students (from left) Brigette, Carli, Nikki, Njameh and Megan will continue to work on their School Travel Plan.

TravelSmart at Eltham High School

Students at Eltham High School in Year 8 SOSE have been investigating the travel patterns of their fellow students, while those in Year 10 Geography conducted travel audits on the local routes to school and the facilities available for students who walk, cycle and catch public transport around the school.

The students have been taking part in a TravelSmart program, a Victorian Government-funded initiative to encourage students to use methods other than car travel to get to and from school. In partnership with Council, Eltham High School was chosen as the pilot school because of ongoing issues with congestion in surrounding streets. The objective of the project is to increase the use of sustainable transport through walking, cycling, using public transport and smarter car use.

From the students' work some interesting trends were revealed.

Nearly half the students (46.5%) travel to school by car, with 25% travelling by public transport, and walking being the next most popular at 19.5%. However, the Year 10 Geography students discovered almost 80% of students live within 3km of the school, which is considered an easy distance to walk or cycle, and they found 75% of students owned a bicycle yet so few students cycle to school. And a really worrying piece of information was found that of the students being driven to school, around 60% of them would be the only student in the car.

With their work on local routes and school facilities, the students suggested improvements be made for an improved bus bay shelter and bike shed security at school; crossings on Bolton Street, Brougham Street and Main Road near Falkiner Street; speed limits or traffic calming for Susan Street, Withers Way and Falkiner Street; and improved or additional foot and bike paths on Bolton, Bridge and Susan Streets.

The students will continue to work on their School Travel Plan and identify action which could change the way the school community travels, reduce greenhouse gas emissions from cars and help ease congestion locally.

For further information, contact Paul Brown, Greenhouse Projects Officer, on 9433 3219.

2006 Nillumbik Sports Awards

Early in June the Eltham Conference and Reception Centre was filled with over 180 local sportsmen and women, as Council invited gold-medal winner, Lauren Burns, to speak at the 2006 Nillumbik Sports Awards to recognise the success of our sporting individuals, teams and clubs in Nillumbik.

The evening also celebrated the contribution local sports and recreation organisations make to life in Nillumbik.

Over twenty awards were presented to individuals from sports as diverse as basketball, lawn bowls, netball, athletics, gymnastics, hockey, baseball, horse-riding, football, taekwando and aerial skiing, with team awards and team management



Guest speaker Lauren Burns congratulates Madeline Green (far left), a member of the Jets Gymnastic High Performance Program, shown celebrating with her team.

awards making up the total of 30 awards presented for the night.

Time to count Australia

It's Census time again – 8 August is the day. The



Census provides a snapshot of everyone in Australia, and the data is used for a range of planning purposes by governments at all levels and private organisations.

In 2006, there are 61 questions on the Census household form. In a Census first, this year Australians can choose to complete their Census form online with the eCensus option.

For further information call the Census Enquiry Service Line: 1300 362 883.

Governance and community engagement



Have your say on what you would like at the Eltham North Reserve.

Eltham North Reserve Masterplan update

Eltham North Reserve is a significant regional reserve. It has three sports grounds, community hall, adventure playground, important areas of remnant vegetation and the Diamond Creek Trail, and so provides opportunities for structured and unstructured recreation activities.

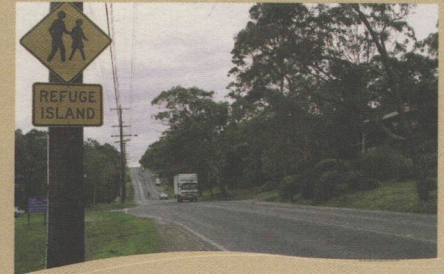
The aim of the Masterplan is to guide the future development of the reserve in accordance with community needs and priorities, balancing facility development with enhanced natural settings. Emerging issues and comments raised throughout the first phase of consultation include:

- vehicle access to the northern section of the reserve during peak periods
- parking in the northern section of the reserve is limited
- a section of the Diamond Creek Trail runs along the access road
- provision of a school drop-off zone near the primary school
- sports ground lighting for safety

- sports pavilion development
- upgrade the public toilet adjacent to the adventure playground
- improve the safety of the cricket nets in the northern and central sections of the reserve
- maintenance and refurbishment of the adventure playground
- painting and maintenance of the community hall
- indigenous planting through the central section of the reserve
- improvements to sportsground playing surfaces.

While a lot of research has already been undertaken on what the communities in Eltham North envisage for this reserve, it is not too late to make your comments, ideas and priorities known. Please send your submission to:

Amanda Allen
Leisure Services Development Officer
Nillumbik Shire Council
PO Box 476, Greensborough 3088



Safety concerns for pedestrians and vehicles along Bolton Street are being addressed by both Banyule and Nillumbik Councils.

Bolton Street, Eltham

As a result of two recent community information sessions hosted by Nillumbik Shire Council in partnership with Banyule City Council, and in response to requests of local residents, a draft plan for the full construction of Bolton Street is now available on www.nillumbik.vic.gov.au > Roads, Drains and Footpaths.

The draft plan includes kerb and channelling; three lanes, allowing for a centre turning lane; underground drainage; and footpaths and pedestrian refuges and will cost an estimated \$4.64 million to construct. The draft plan was prepared by Council in partnership with Banyule City Council as part of a submission to VicRoads calling for the street to be reclassified as an arterial road.

Residents along Bolton Street and in surrounding areas have long had strong concerns about safety along the road.

Bolton Street is an important link to other arterial roads, namely Main Road in Eltham and Para Road in Greensborough, and carries a high volume of traffic – approximately 18,000 vehicles per day – Council will continue to advocate strongly to VicRoads for its reclassification.

Calendar of events

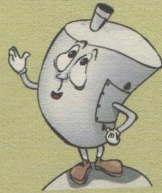
The following activities are some events run by or supported by Council, including those provided from members of Nillumbik traders' groups and the Nillumbik Tourism Association. For detailed information pick up a free copy of the Calendar of events brochure from your local community information stand or visit www.nillumbik.vic.gov.au > What's On. Go to the website to list

an event or contact Heather Stewart, Communications Officer, 9433 3178 or via email Heather.Stewart@nillumbik.vic.gov.au. The information required is: date and time of event; description in 20-30 words; venue address; costs involved and a contact name and phone number for public enquiries; a website or email address can be included.

Wednesday 2 August

Everything you have ever wanted to know about septic systems

Poorly maintained septic systems are a serious source of water pollution and may present health and environmental risks. By looking after your septic system, you will assist in protecting both the environment and your health. Come along to this informative workshop and discover how a septic system works, identify the warning signs that can indicate problems and learn the maintenance requirements and options for improving septic system performance. Banksia Room, Living & Learning Nillumbik - Pantan Hill, 18 Bishops Road, Pantan Hill (Melway 263 K9); 7pm-9pm
Contact: Fiona Cook, Public Health Services 9433 3340
Cost: Free



Wednesday 9 August to Tuesday 29 August

Splash of Colour – Exhibition by Judy De Gier and Carole McKeon

Local artists, Judy and Carole, have created a *Splash of Colour*, the result of a three-year focus on the interplay between the magic of colour and texture. Their complementary styles and the use of mixed media create an exhibition displaying vibrancy, starkness and juxtaposition of colour. Location: Eltham Library Community Gallery, Panther Place, Eltham; open library hours
Contact: Jessica Neath 9433 3126
Cost: Free
Email: Jessica.Neath@nillumbik.vic.gov.au



Thursday 10 August

Watermark Australia Taking action on water from your sink to your rivers

Presented by People for Environmental Protection and hosted by Nillumbik Shire Council. The Watermark project, coordinated by the Victorian Women's Trust uses the guiding principles of Watermark Australia's Water Charter, a document that draws together the input of more than 2000 people across Australia.

Participants will be provided with examples of exciting and effective actions and projects taking place in homes, communities, towns and cities by ordinary citizens. This interactive session will discuss the material gathered from the various groups involved, and provide examples and stories that will assist to influence behavioural change in our homes and local communities.

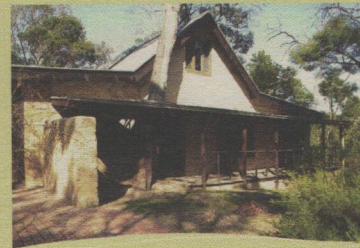
Edendale Farm Community Environment Centre, Gastons Road, Eltham;
7pm-9pm
Contact: Megan Andrews 9433 3210
Cost: Free



Thursday 17 August

Courthouse Readings special event

For Melbourne's annual Poetry Festival, Overload, the Courthouse Readings will feature acclaimed author, playwright and teacher, Barry Dickens. Eltham Courthouse, 728 Main Road, Eltham; 7.30pm for 8pm start
Contact: Jessica Neath 9433 3126
Cost: \$5
Email: Jessica.Neath@nillumbik.vic.gov.au



19 August

Laughing Waters Artist in Residence Program

Nillumbik Shire Council, together with Parks Victoria, invites the community to an Open Day at Birrarung. The property provides the opportunity for visual artists to work and live in a heritage mudbrick dwelling designed

and built by landscape designer Gordon Ford and Graham Rose. Come and spend some time enjoying the inspired design and quiet surrounds of this unique property and view work by previous resident artists. Applications for 2007 residencies are due 15 September 2006. Birrarung, 195 Laughing Waters Road, Eltham; 2pm-4pm
Contact: Jessica Neath on 9433 3126 or
Cost: free but RSVP required
Email: Jessica.Neath@nillumbik.vic.gov.au

Sunday 20 August

Waterwise gardens

The waterwise demonstration garden at Edendale provides an opportunity to view different garden styles, drought tolerant plant species and a variety of water management techniques. During this workshop participants will have an opportunity to learn about water saving techniques and participate in a guided tour of the formal, courtyard, cottage and bush garden. Morning tea will be provided. Facilitator: Fiona Cross.

Minimum of 15, maximum of 30
Edendale Farm Community Environment Centre, Gastons Road, Eltham;
9am-11am
Contact: Living & Learning Nillumbik 9430 1313
Cost: \$10



In brief...

Vale George Barker

– long live Eltham Little Theatre

George Barker was one of the earliest members of Eltham Little Theatre (ELT) – he first became a committee member in 1961. He was on the committee for more than 40 years and was president for more than 30 years.

George also directed many shows and had been a performer in numerous productions. Although it is some 10 years since he last performed, many patrons of the theatre still talk about George and his wife Esme performing their hilarious mime routines.

George was a great supporter of the Youth Productions at ELT, and never refused any request made of him by the directors. He regularly attended rehearsals and took great delight in seeing members of Youth Productions progressing to our plays

or Music Hall productions. The last time I saw George was at one such rehearsal. It is unfortunate George was not present for our Youth Production *The way the west was warped*.

To me, George was a good friend, and I miss his almost daily phone calls to discuss theatre business. To most of us involved in amateur theatre it is a passion and a form of escape from the everyday grind. No different for me, and so I always loved discussing theatre business with George – his passion was infectious.

George had a great sense of humour – every conversation I had with him would involve a laugh or two, and culminate in the phrase I shall never forget: 'OK mate, I'll let you get back to your knitting'. George was a true friend, and his passing is not only a great loss for the theatre, but also a huge loss for his family and those of us lucky enough to have experienced the generosity of his friendship.)

by Ian Forsyth

Environmental Events Program July-November

This is what you have been waiting for! Pick up a copy of Council's *Environmental Events* July-November program to find a range of mainly free workshops, talks and courses including topics such as: What's happening to the Yarra River; Going places – green travel; Waterwise gardens at Edendale Farm Community Environment Centre; Seed-saving workshop; Wildflower walk and talk; Chemical users course and Public transport and the environment in Nillumbik – and much more!



For a copy of the brochure please contact Rebecca Petit, Environment Officer, on 9433 3216. It is also available from the community information stands around the Shire or as a download from Council's website www.nillumbik.vic.gov.au > Environment.

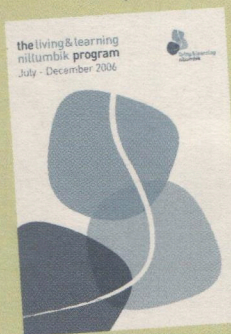
Community Weed Control Program

Registrations are currently being invited for participation in Council's Community Weed Control Program for the control of:

- Cape Broom
- English Broom
- Flax Leaf Broom
- Spanish Heath
- Gorse

Council's Community Weed Control program can help to provide a cost-effective means for landowners to use a professional contractor to undertake weed control work. Under the program, Council subsidises the cost of using an approved licensed contractor to control these weeds.

To register your interest and/or obtain further details, including a list of other weeds on the program, please contact Council's Land Management Officer, on 9433 3211.



New program is now out!

Living & Learning Nillumbik has produced another great program of courses for July-December 2006. And there's a new staff member to guide the way of future vocational and employment courses. Living & Learning Nillumbik welcomes George Katsikas to the position of Program Coordinator for Vocational Education and Training. George is a Nillumbik resident with a young family

and comes from Wesley College, Waverley Campus, where he was head of the Music Department. He brings a wealth of management (and musical) experience and already has some great ideas for 2007.

First, though, the July-December 2006 program offers a range of courses where participants can learn practical skills, take an accredited course, or just do something for fun and enjoyment. Vocational Education and Training Courses are a key part of the program with courses including Certificate IV Training and Assessment, Certificate III in Aged Care, Food Safety, Workplace safety, Computer training, Study skills and Getting that job.

The Living & Learning Nillumbik program is now delivered to the majority of households in Nillumbik. If you haven't received a copy it can be downloaded from www.nillumbik.vic.gov.au or picked up from any of the community information stands located throughout the Shire. For further information, including enrolments, contact Living & Learning Nillumbik on 9430 1313 (Eltham), 9718 7506 (Panton Hill) or 9438 5350 (Diamond Creek).

2006-2007 Budget - from pages 2-3

How much do I pay in total rates and charges?

This varies property to property. If your property is valued at \$300,000 you will pay \$21.47 per week in total rates and charges. If your property is valued at \$800,000 you will pay \$47.24.

What increases will there be in the rates and charges?

Council's Waste Management Charge will increase \$13.35 per annum, from \$247.30 to \$260.65 (5.4%) in order to fund increased operating costs, the ongoing kerbside hard waste collection service and a continuation of the funding for rehabilitation works at Plenty landfill. Increases of this magnitude are expected for the next few years to meet operating and legislative requirements, particularly relating to the Plenty landfill rehabilitation.

An increase in the Municipal Charge from \$20 to \$52 per assessment to offset

administration costs. Council is faced with ongoing reductions in Grants Commission General Purpose grants, loss of National Competition Policy payments and ongoing shifting of costs from other levels of government to local government.

The Shire's rates income will increase by 7.95%. This helps finance Council's operating costs, a moderate growth in services plus a substantial increase in funding of capital projects from rates.

Other fees and charges increases are generally in accordance with inflation (3%), current demand, legislative requirements or market considerations.

The overall impact is an increase in rates and charges income of 9.81%.

For a full copy of the 2006-2007 Budget Kit, please go to www.nillumbik.vic.gov.au or ring 9433 3111 for a printed copy to be sent to you.

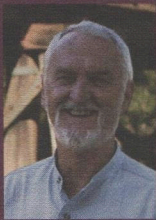


A community panel of 1000 voices working with Council to make Nillumbik an even better place for you and your family

Nillumbik Shire Council is inviting you to become a panel member of Nillumbik talkback. As a panel member you will represent your family and provide feedback on important issues surrounding your neighbourhood. Your opinions will help shape Council decisions and ensure the voice of the residents is heard!

In this edition of *Nillumbik News* you will find a separate brochure including an Expression of Interest form – please complete and submit. Or, if it is missing, please contact Emma Riordan, Communications Officer, on 9433 3188 or download the form from our website www.nillumbik.vic.gov.au > under News on the home page.

Median residential property	2005-06 Adopted Budget \$	2006-07 Draft Budget \$	Annual increase \$	Increase per week \$	Rates and charges per week \$
Valuation - \$370,000	1,216.72	1,304.25	87.53	1.68	25.08
Valuation - \$300,000	1,037.10	1,116.65	79.55	1.53	21.47
Valuation - \$800,000	2,320.10	2,456.65	136.55	2.63	47.24



Councillor Greg Johnson (Mayor)

Wingrove Ward
Mobile: 0438 277 425
Email: Greg.Johnson@nillumbik.vic.gov.au
Phone/fax: 9439 4236

Postal address for all Councillors:
Nillumbik Shire Council,
PO Box 476,
Greensborough 3088



Councillor Michael Young (Deputy Mayor)
Edendale Ward

Mobile: 0437 840 866
Email: Michael.Young@nillumbik.vic.gov.au
Phone/fax: 9431 1972



Councillor Bo Bendtsen
Ellis Ward

Mobile: 0437 455 064
Email: Bo.Bendtsen@nillumbik.vic.gov.au
Fax: 9438 5756



Councillor Bill Penrose
Allwood Ward

Mobile: 0438 277 427
Email: Bill.Penrose@nillumbik.vic.gov.au
Phone: 9719 7468
Fax: 9719 7370



Councillor Helen Coleman
Lenister Ward

Mobile: 0437 940 930
Email: Helen.Coleman@nillumbik.vic.gov.au
Phone/fax: 9439 0063



Councillor Bronnie Hattam
Coleman Ward

Mobile: 0437 460 363
Email: Bronnie.Hattam@nillumbik.vic.gov.au
Phone/fax: 9439 5743



Councillor Howard Bulmer
Sutherland Ward

Mobile: 0439 347 351
Email: Howard.Bulmer@nillumbik.vic.gov.au
Fax: 9438 4835



Councillor Peter Yates
Cottle Ward

Mobile: 0437 581 360
Email: Peter.Yates@nillumbik.vic.gov.au
Phone/fax: 9714 8698



Councillor Warwick Leeson
Yanakie Ward

Mobile: 0439 347 797
Email: Warwick.Leeson@nillumbik.vic.gov.au
Phone/fax: 9712 0842