

# PRICES' CURRENT & SHIPPING LIST.

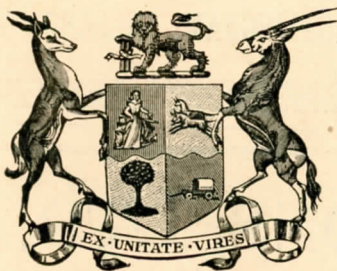
Monthly Circular—JANUARY, 1926.

34th YEAR OF ISSUE

No. 397.

# FRANCIS CHAPMAN, SONS & DEEKES,

Partners—JAS. DEEKES, F. R. C. CHAPMAN, H. A. CHAPMAN, L. M. DEEKES.



AUSTRALIAN  
NEW ZEALAND  
SOUTH AFRICAN  
AND  
GENERAL OVERSEAS



ALL CODES USED.



BUYING,  
SHIPPING,  
INSURANCE  
AND  
CHARTERING  
AGENTS.

**AUSTRALIA HOUSE, STRAND,  
LONDON, W.C.2.**

Cables—"MICROPHONE, LONDON."

Telegrams—"MICROPHONE, ESTRAND, LONDON."

AND AT

**Castlereagh House, Castlereagh Street, SYDNEY.**

Cables and Telegrams—"REBLINCO, SYDNEY."

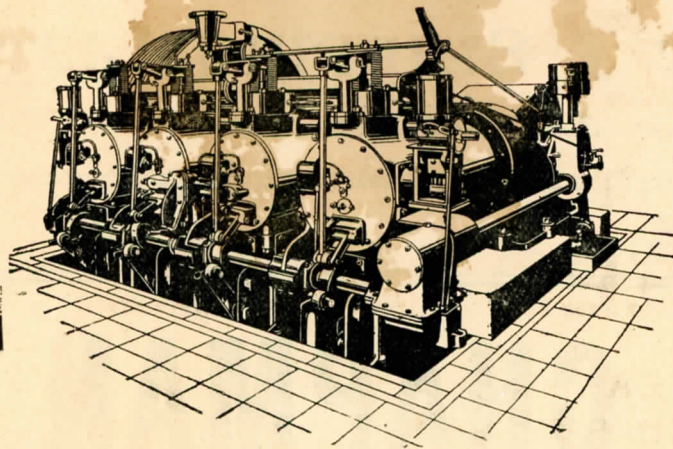
*Representative for Queensland*—A. J. AUSTIN, Commercial Union Chambers, Eagle Street, Brisbane.

*Representative for Victoria and Tasmania*—W. H. MACLENNAN, Henty House, 499, Little Collins St., Melbourne, Victoria.

*Representatives for New Zealand*—H. E. COOPER & CO., Forester's Buildings, Wellesley and Albert Streets, Auckland.

*Representatives for South Africa*—H. J. STEPHENSON & CO., 15, Henwood's Arcade, Johannesburg.





Multi-Cylinder Horizontal Pattern. Totally Enclosed.

A large number of "Premier" Engines of this type have been installed with great success in:—

- |                                       |                                       |
|---------------------------------------|---------------------------------------|
| IRRIGATION WORKS                      | BRICK WORKS                           |
| MUNICIPAL PUMPING<br>and SEWAGE WORKS | SHIPBUILDING and<br>ENGINEERING WORKS |
| CEMENT WORKS                          | GAS WORKS, &c., &c.                   |

# The "PREMIER" GAS ENGINE

One of the chief characteristics of the "Premier" engine is its remarkably smooth and consistent running—a feature which makes it particularly suitable for direct coupling to electric generators. The four cylinder, four crank, horizontal type, as illustrated, requires but little floor space; its complete accessibility renders possible the more frequent cleaning and adjusting of reciprocating parts.

The "Premier" horizontal gas engine is made in sizes from 120 B.H.P. to 1,000 B.H.P. to use Town's Gas, Producer Gas, Blast Furnace Gas, Coke Oven Gas, etc.

**THE PREMIER GAS ENGINE CO., LTD.**  
SANDIACRE, nr. NOTTINGHAM, ENGLAND.

## THOMAS CROMPTON & SONS, LTD.

Trade Mark. Ashton-in-Makerfield, near Wigan, England.

**T.C.**

Trade Mark.

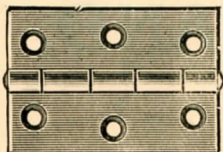
**CROMPTON**

Manufacturers of :

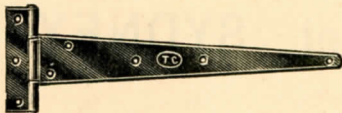
- STEEL HINGES :** Butts  
Tees  
Hasps and Staples  
Backflaps  
Parliament  
Wine Case  
Bands and Hooks  
Chest, Strap, &c.

- BRASS HINGES :** Lockjoint Butts  
" Backflaps  
Single Butts  
" Backflaps  
Sanitary Seat, &c.

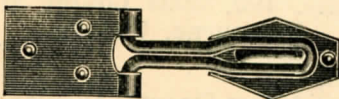
- LOCKS :** Rim Locks  
Dead " "  
Rim Latches  
Night " &c.



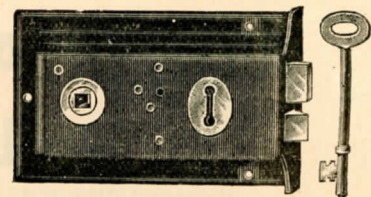
No. 838. Butt.



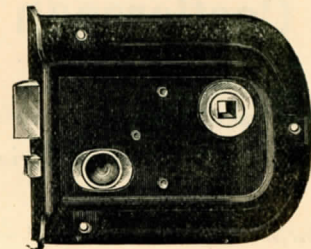
No. 452. Tee.



No. 540. Hasp and Staple.



No. 732. Rim Lock.



No. 729. Rim Latch.

Specify **CROMPTON** make in every Indent.



# FRANCIS CHAPMAN, SONS & DEEKES

Partners—JAS. DEEKES, F. R. C. CHAPMAN, H. A. CHAPMAN, J. M. DEEKES

**Buying, Shipping and Insurance Agents.**

All Classes of Indents executed at competitive rates  
of Commission.

**Manufacturers' Original Invoices supplied  
to all customers.**

Shipments and Insurances attended to.

**IRON and STEEL of all kinds.**  
MACHINERY and MACHINE TOOLS.

**Electric Light, Gas, Water, Mining, Refuse  
Treating and Utilizing Plant, Bridge-  
work, Locomotives, Dredges, Launches, and**  
ALL CLASSES OF ENGINEERING WORK AND  
ENGINEERS', BUILDERS' AND GENERAL  
CONTRACTORS' TOOLS AND REQUIREMENTS

**CHINA, EARTHENWARE and GLASS.**  
FOODSTUFFS AND ALL GENERAL STORES'  
REQUIREMENTS

**Musical Instruments of all kinds.**

**Motor Lorries and Cars, Aeroplanes, &c. and all  
Aeroplane and Motor Trade Accessories a speciality.**

**Drafts passed at current rates of exchange  
according to arrangements made by customers.**

**AUSTRALIA HOUSE, STRAND,  
LONDON, W.C.**

**Cable Address—"MICROPHONE, LONDON."**