

Single track operation with passing loops controlled by Forest-city automatic color-light signalling  
 Route mileage above is return mileage.

### PLACES OF INTEREST

ART GALLERY, View Street

LOOK-OUT TOWER, Rosalind Park (ex Garden Gully Mine Head)

CONSERVATORY GARDENS and FERNERY

A TRIP to EAGLEHAWK, see Tramway Time Table

THE NEW EPPALOCK WEIR, 15 miles

ONE TREE HILL, 6 miles

HISTORICAL DISPLAY, Eaglehawk (Gold Mining)

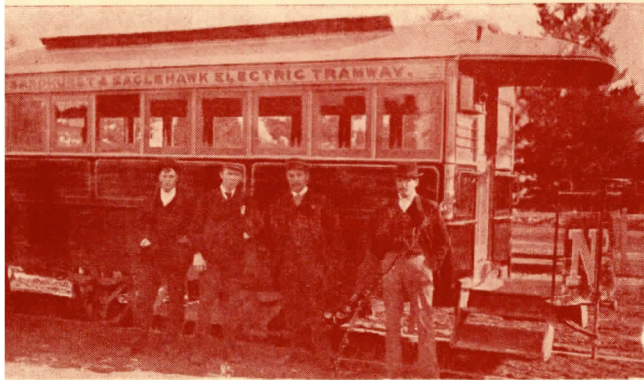
# Welcome to Bendigo



CHARING CROSS

As to the City's name, it seems most likely to have been taken from a shepherd who was nicknamed "Bendigo" for his pugilistic skill, Bendigo then being a notable figure . . . in the ring in England . . .

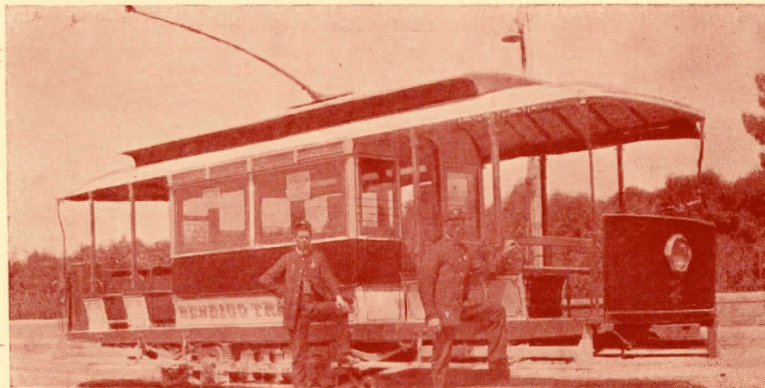
# EVOLUTION OF BENDIGO TRAMWAYS



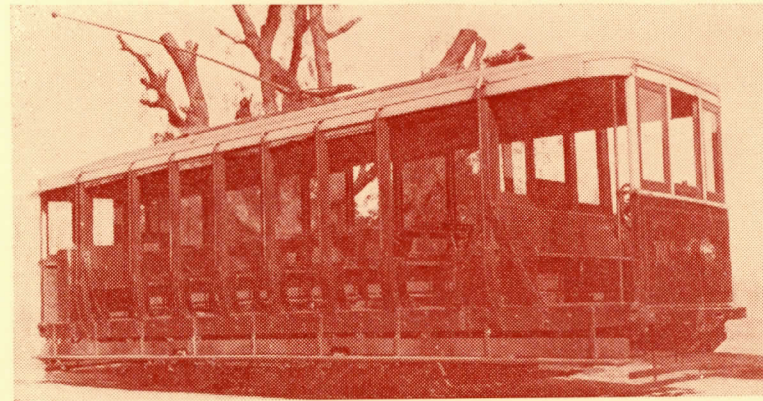
1890 Bendigo's first tramway battery-electric carriages operated between Sandhurst and Eaglehawk.



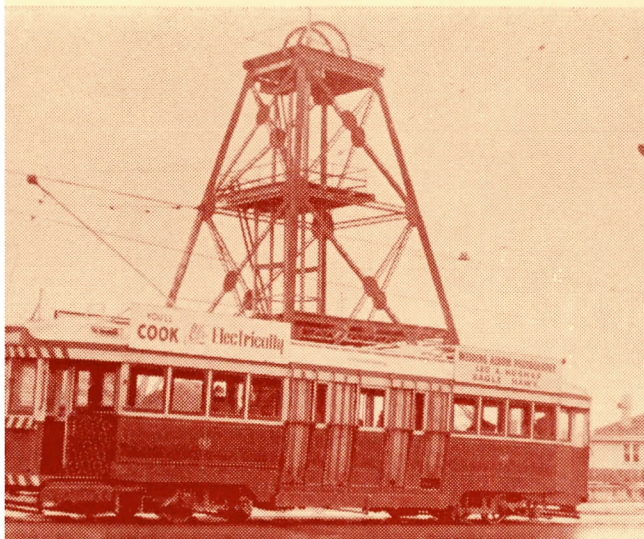
1892 Battery-electrics replaced by steam tram cars Bendigo Railway Station-Eaglehawk



1913 Open cross-seat cars added to the service Quarry Hill-Eaglehawk



ic traction  
was in-  
d, extend-  
Quarry Hill,  
quare and  
eroona



1945 Maximum Traction bogie cars replaced older cars

1947 Birney safety cars (dead man controllers) replaced older cars

