



THE BENDIGO AND NORTHERN DISTRICT BASE HOSPITAL

RE-BUILDING PROGRAMME

This display illustrates the second stage in the re-building plan for the Bendigo and Northern District Base Hospital. Provision is made for:

Out-Patients' Department

Casualty Department

Phychiatric Clinic

Speech Clinic

Eye Clinic

Chest Clinic

Dental Clinic

X-Ray Therapy Clinic

Radiology Department

Pharmacy Department

Blood Bank Facilities

Medical Records Department

Medical Social Workers

Medical Superintendent's Office

Canteen and Meal Facilities

Creche and playground for children

Telephone Exchange

Each year over 40,000 treatments are given to out-patients by the Bendigo Hospital, and it is anticipated that, in this well-planned area, an increasing volume of work will be handled more conveniently and with greater speed.

It is planned that this whole area, which is estimated to cost in excess of £200,000 will be ready for use early in 1965.

STEWART

THEATRES CENTRAL
STERILIZING ("C" FLOOR)

"B" FLOOR: PATHOLOGY
MORTUARY

LINK "B" - "C"

"KURMALA"
"A" - "C" FLOOR EXISTING
"D" FLOOR ADDITION

SPECIAL CLINICS

STANISTREET HOUSE EXISTING
"B" - "E" FLOORS



CAR PARKING

SENIOR STAFF

STREET

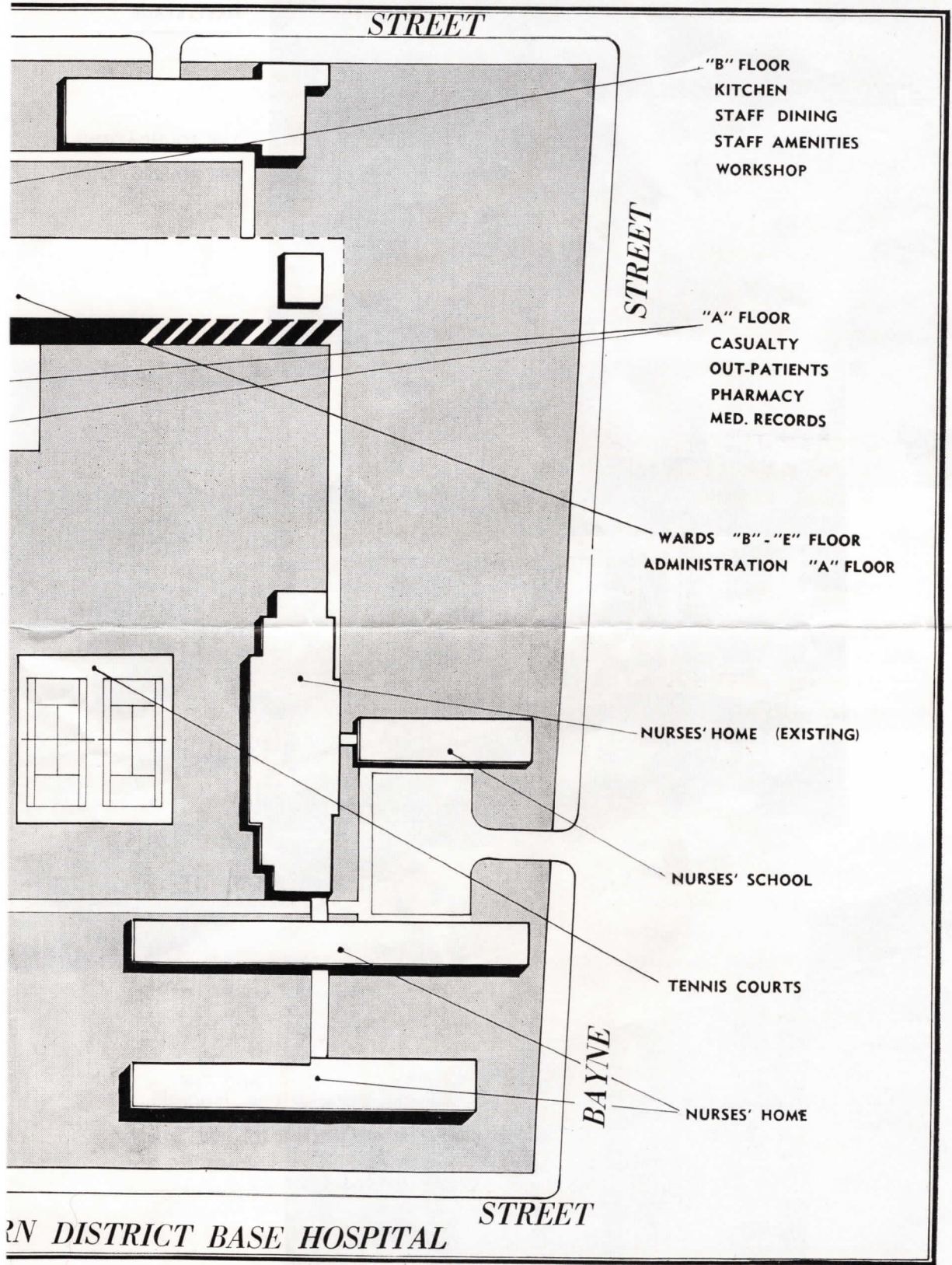
ARNOLD

LUCAN

Approach Driveway

Entrance

THE BENDIGO AND NORTHER



STREET

"B" FLOOR
 KITCHEN
 STAFF DINING
 STAFF AMENITIES
 WORKSHOP

STREET

"A" FLOOR
 CASUALTY
 OUT-PATIENTS
 PHARMACY
 MED. RECORDS

WARDS "B" - "E" FLOOR
 ADMINISTRATION "A" FLOOR

NURSES' HOME (EXISTING)

NURSES' SCHOOL

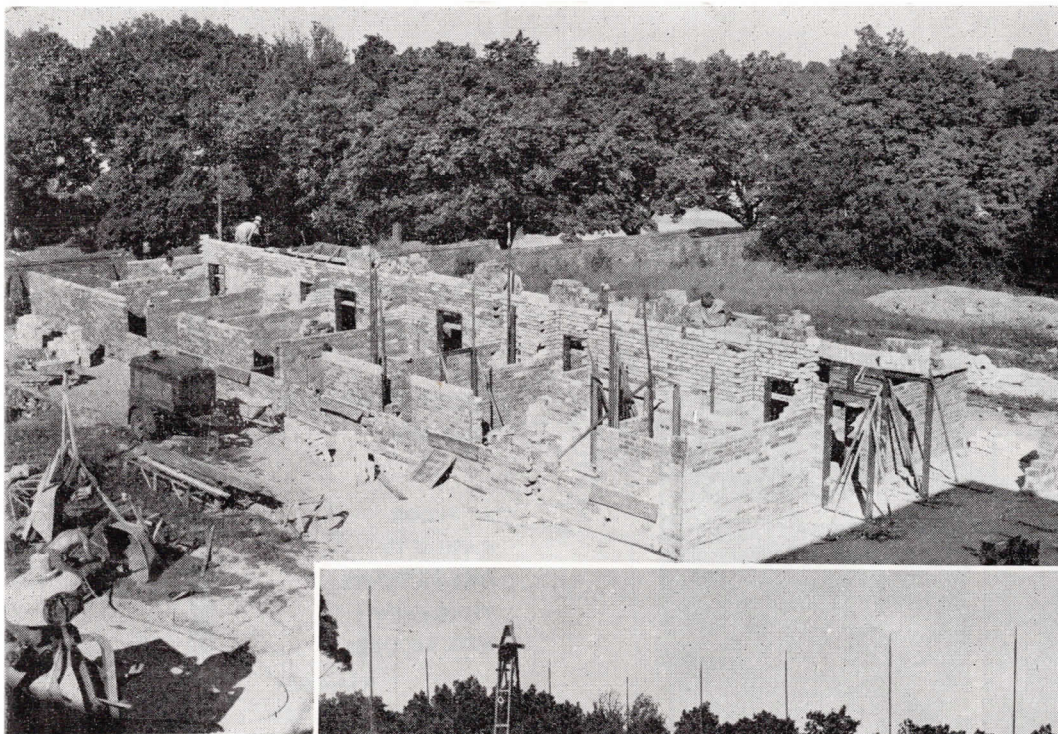
TENNIS COURTS

BAYNE

NURSES' HOME

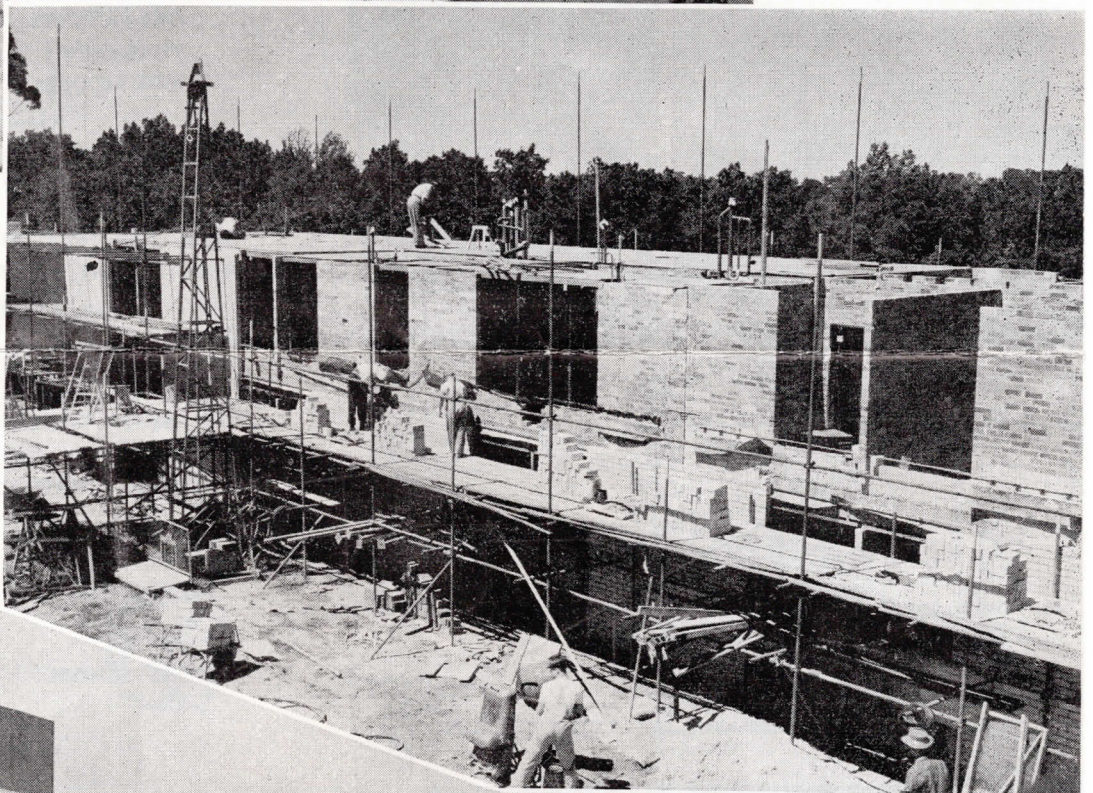
STREET

RN DISTRICT BASE HOSPITAL

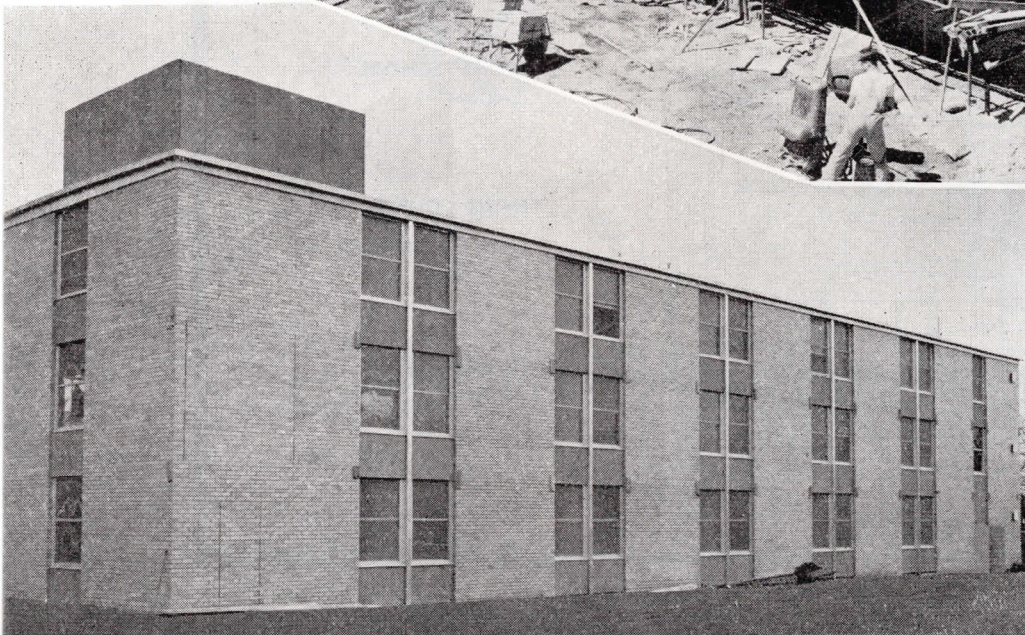


FIRST STAGE

THE FOUNDATIONS
ARE POURED



THE WALLS
RISE



AND THE
PETHARD WING
OF THE NURSES'
HOME IS
COMPLETED