

SHADE CARD

2003/2004

Now that the cooler days of winter are not far away it's time to dust off those needles and start knitting. To tempt you we have introduced some exciting new shades right through our range of yarns. Blueberry, Sweet Pea, Tuscan, New Gold and Peacock are waiting for you in Classic.

Why not add a "Sparkle" to your life - with two of our special Mohair colours. In all, our Mohair yarn has seven new shades including three autumn tones for those of you who love these colourways. Like the feel of Harmony, our wool and cotton mix? If this is the yarn for you, knit up a storm in Aquarius, Lime, Dewberry or rich Bordeaux. Lovely strong colours to brighten your winter days.

PATTERN LEAFLET

This years leaflet has new patterns for you to enjoy. For something different, knit a cushion cover or two from our easy to knit slip stitch cushion pattern. Choose colours to suit your decor and give your home a lift.

Our patterns are quick to knit , some with set in sleeves and a choice of neckbands, others with comfortable drop shoulders to show off the pattern. Patterns for 4, 5, 8 and 10 ply. Something for everyone. Pattern leaflets at \$2.50, Books at \$7.50.

PURE WOOL KNITWEAR FOR 2003

Back by popular request - we have in stock Ladies turtle neck jumpers and matching cardigans. These garments feature raglan sleeves with ribbed cuffs and bands, features that so many of you have asked for. These classic Australian made garments are lightweight and machine washable. Available in four colours.

New for the men, a medium weight fine ribbed pattern jumper. The right choice for that smart casual look. Available in four distinctive colours and made for you in Australia.

Our popular men's lightweight V neck vests and jumpers are available in this seasons colours. Machine washable and made in Australia. See enclosed brochure for details.

Privacy Policy

Bendigo Woollen Mills respects customer privacy and does not pass on your details to any marketing organization. We are therefore keen to make sure that you are happy to receive future Shade Cards and other mailings we do at various times through the year. If for any reason you no longer wish to receive any of this information, simply tick the box below and return this letter to us, or telephone us on 03 5442 4600.

I no longer wish to receive further mailings from Bendigo Woollen Mills.



Style K - V Neck Vest \$64.00

*Vest suitable for male or female, though in mens sizes only.
Machine Washable and in four colours as shown below.*

Style J - Mens V Neck Jumper \$85.00

Machine Washable V neck jumper in four colours as shown below.

Both styles available in sizes 16,18,20,22,24.



Dark Navy 3511



Blue 3563



Burgundy 3512



Charcoal 3578

BENDIGO WOOLLEN MILLS
4 LANSELL STREET WEST, BENDIGO, VIC. 3550
PHONE ORDERS 03 5442 4600
PH/FAX 24 HRS 03 5442 2918

BENDIGO
 WOOLLEN
 MILLS



Style C \$120.00

Style B \$69.00

PURE WOOL
KNITWEAR

Style A- Ladies Cardigan \$79.00

Style B- Ladies Turtle Neck Jumper \$69.00

*Note the return to comfortable raglan sleeves on these garments.
Both styles are available in four colours as shown below.
Machine Washable*

Red 3570



Cornflower 3571



Seagreen 3572



Navy 3573



| | | | | |
|----------------------|----------|----------|----------|-----------|
| <i>Ladies Sizes:</i> | <i>S</i> | <i>M</i> | <i>L</i> | <i>XL</i> |
| <i>To Fit cm</i> | 85 | 95 | 105 | 110 |

Style C - Mens Jumper \$120.00

*Medium weight fine ribbed pattern men's jumper available in
four colours as shown below. Hand washable.*

| | | | | |
|--------------------|-----|-----|-----|-----|
| <i>Mens Sizes:</i> | 18 | 20 | 22 | 24 |
| <i>To Fit cm</i> | 100 | 105 | 110 | 115 |



Navy 3574



Anthracite 3575



Shiraz 3576



Blueberry 3577

*Pure Wool Knitwear proudly made in Australia
Garments fully exchangeable or refundable if returned
within 14 days*



Style J \$85.00

Style A \$79.00

Style B \$69.00
under cardigan



Competent Knit

| | |
|----------------|-------------------------------|
| PT 8140 | 10 ply Aran |
| To Fit (cm) | 80 85 90 95 100 105 110 115 |
| Fin. Size (cm) | 94 98 102 109 113 117 124 128 |
| 200gm | 5 5 5 6 6 6 7 7 |
| Needle Sizes | 4.00mm & 5.00mm |



Competent Knitters

| | |
|----------------|-----------------------------------------------------|
| PT 8144 | 8 ply Colonial, Classic, Rustic, Harmony and Alpaca |
| To Fit (cm) | 65 75 85 95 105 115 |
| Fin. Size (cm) | 82 93 104 114 125 136 |
| 200 gram | 3 3 4 5 5 6 |
| Needle Sizes | 3.25mm & 4.00mm |

PATTERN LEAFLETS \$2.50



Easy Knit

| | |
|-----------------|---------------------------------|
| PT 8126 | 8 ply Colonial, Classic, Rustic |
| To Fit (cm) | 45 50 55 60 |
| Fin. Size (cm) | 57 63 68 74 |
| Cardigan/Jumper | 1 2 2 2 |
| Waistcoat | 1 1 2 2 |
| Needle Sizes | 3.25mm & 4.00mm |



Competent Knitters

| | |
|----------------|-------------------------|
| PT 8047 | 4 ply Baby Wool |
| To Fit (cm) | 31 36 41 46 51 56 61 66 |
| Fin. Size (cm) | 37 41 46 51 56 61 66 71 |
| 200gm | 1 1 1 1 1 1 1 1 |
| Needle Sizes | 2.75mm & 3.25mm |



Country Arans

PATTERN BOOKS \$7.50

PB 8125 10 PLY 8 Aran Handknits for all the family.



PB 8133 4 & 8 ply "Dressing Up for Dolls" 18 page book



Family Classics THE COMPLETE COLLECTION

PB 8130
Each one of these designs can be knitted in 4, 8 or 10 ply in over 24 variations.

PATTERN COLLECTION

PT 8152 8 Ply NEW

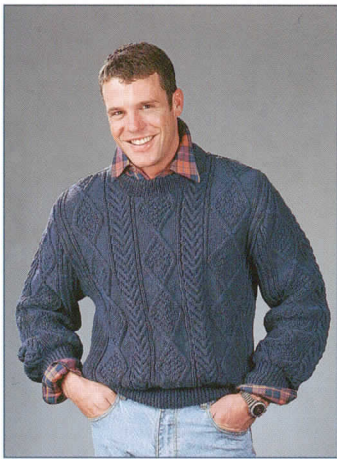


| | | | | |
|----------------------|-------|-------|--------|---------|
| To fit chest size | 75-80 | 85-90 | 95-100 | 105-110 |
| 200 gram balls/hanks | 4 | 4 | 4 | 4 |



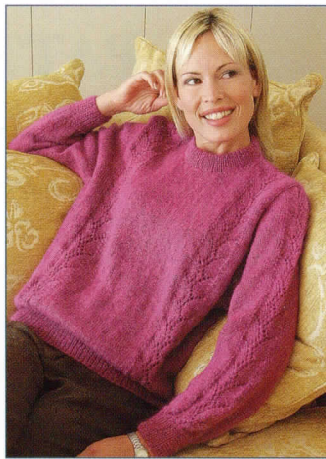
Lansell Street, BENDIGO, VIC. 3550
Phone (03) 5442 4600 Fax (03) 5442 2918

USA. Ph: 1 - 888 - 235 - 1993. 5 - 10 pm, Sunday to Thursday



Competent Knitters

| | | | | | | |
|----------------|---------------------------------|-----|-----|-----|-----|-----|
| PT 8083 | 8 ply Colonial, Classic, Rustic | | | | | |
| To Fit (cm) | 90 | 95 | 100 | 105 | 110 | 115 |
| Fin. Size (cm) | 110 | 115 | 118 | 123 | 126 | 131 |
| 200 gram | 5 | 5 | 5 | 5 | 6 | 6 |
| Needle Sizes | 3.25mm & 4.00mm | | | | | |



Competent Knitters

| | | | | |
|----------------|-----------------|-----|-----|-----|
| PT 8143 | 8 ply Mohair | | | |
| To Fit (cm) | 80 | 90 | 100 | 110 |
| Fin. Size (cm) | 106 | 117 | 128 | 137 |
| 200 gram | 3 | 3 | 3 | 4 |
| Needle Sizes | 3.25mm & 4.00mm | | | |



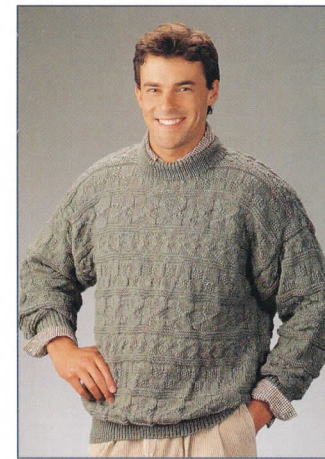
Competent Knitters

| | | | |
|----------------|---------------------------------|-----|-----|
| PT 8154 | 8 ply Colonial, Classic, Rustic | | |
| To Fit (cm) | 100 | 110 | 120 |
| Fin. Size (cm) | 118 | 124 | 130 |
| 200 gram | 5 | 5 | 5 |
| Needle Sizes | 3.25mm & 4.00mm | | |



Competent Knitters

| | | | |
|----------------|---------------------------------|-----|-----|
| PT 8153 | 8 ply Colonial, Classic, Rustic | | |
| To Fit (cm) | 80 | 90 | 100 |
| Fin. Size (cm) | 104 | 115 | 126 |
| 200 gram | 4 | 4 | 4 |
| Needle Sizes | 3.25mm & 4.00mm | | |



Competent Knitters

| | | | | | |
|----------------|---------------------------------|-----|-----|-----|-----|
| PT 8029 | 8 ply Colonial, Classic, Rustic | | | | |
| To Fit (cm) | 100 | 110 | 120 | 130 | 140 |
| Fin. Size (cm) | 113 | 125 | 138 | 151 | 163 |
| 200 gram | 5 | 5 | 5 | 6 | 6 |
| Needle Sizes | 3.25mm & 4.00mm | | | | |



Competent Knitters

| | | | | |
|----------------|------------------------------------------|-----|-----|-----|
| PT 8138 | 8 ply Colonial, Classic, Rustic, Harmony | | | |
| To Fit (cm) | 80 | 90 | 100 | 110 |
| Fin. Size (cm) | 101 | 111 | 122 | 132 |
| 200 gram | 4 | 4 | 4 | 5 |
| Needle Sizes | 3.25mm & 4.00mm | | | |

PATTERN LEAFLETS \$2.50

QUANTITIES IN 200 GRAMS

PATTERN LEAFLETS \$2.50



Competent Knitters

| | | | | | | |
|----------------|-----------------|----|-----|-----|-----|-----|
| PT 8121 | 10 ply Aran | | | | | |
| To Fit (cm) | 60 | 70 | 80 | 90 | 100 | 110 |
| Fin. Size (cm) | 77 | 89 | 107 | 119 | 127 | 139 |
| 200 gram | 4 | 5 | 6 | 7 | 7 | 7 |
| Needle Sizes | 4.00mm & 5.00mm | | | | | |



Competent Knitters

| | | | | |
|----------------|---------------------------------|-----|-----|-----|
| PT 8137 | 5 ply Colonial, Classic, Rustic | | | |
| To Fit (cm) | 80 | 90 | 100 | 110 |
| Fin. Size (cm) | 100 | 110 | 120 | 130 |
| 200 gram | 3 | 3 | 3 | 4 |
| Needle Sizes | 3.00mm & 3.75mm | | | |



Competent Knitters

| | | | |
|----------------|-----------------|-----|-----|
| PT 8148 | 8 ply Mohair | | |
| To Fit (cm) | 80 | 90 | 100 |
| Fin. Size (cm) | 106 | 117 | 128 |
| 200 gram | 3 | 3 | 3 |
| Needle Sizes | 3.25mm & 4.00mm | | |



Competent Knitters

| | | | | | |
|----------------|------------------------------------------|----|-----|-----|-----|
| PT 8091 | 8 ply Colonial, Classic, Rustic & Alpaca | | | | |
| To Fit (cm) | 86 | 91 | 97 | 102 | 107 |
| Fin. Size (cm) | 91 | 96 | 102 | 107 | 112 |
| 200 gram | 3 | 3 | 3 | 3 | 3 |
| Needle Sizes | 3.25mm & 4.00mm | | | | |



Competent Knitters

| | | | |
|-----------------------|---------------------------------|---------------|--|
| PT 8155 | 8 ply Colonial, Classic, Rustic | | |
| Cushion Size (approx) | 40 x 40 cm | | |
| 200 gram | Main colour | Second colour | |
| T-Square | 1 | 1 | |
| Tweed | 2 | 1 | |
| Spot/Square | 1 | 1 | |
| Needle Size | 4.00mm | | |



Competent Knitters

| | | | | |
|----------------|---------------------------------|-----|-----|-----|
| PT 8147 | 5 ply Colonial, Classic, Rustic | | | |
| To Fit (cm) | 90 | 100 | 110 | 120 |
| Fin. Size (cm) | 110 | 115 | 122 | 127 |
| 200 gram | 3 | 3 | 4 | 4 |
| Needle Sizes | 2.75mm & 3.25mm | | | |

Alpaca - 8 Ply 100% Alpaca

Rustic - 5, 8, 12 Ply Pure Wool

Shades with * 8 Ply only

Handspinning Wool in all Rustic colours

A
L
P
A
C
A

R
U
S
T
I
C

| | |
|---------------|-----|
| JET BLACK | 433 |
| NATURAL ASH | 432 |
| SILVER GREY | 447 |
| GERANIUM | 439 |
| PASSION | 419 |
| CHAMPAGNE | 405 |
| DAFFODIL | 435 |
| JUNIPER | 446 |
| STEEL | 428 |
| PANSY | 437 |
| NATURAL SAND | 434 |
| CARAMEL | 440 |
| ARAN | 958 |
| GREEN OPAL | 982 |
| BLUESTONE | 992 |
| REEF* | 913 |
| PINK OPAL | 980 |
| MULBERRY* | 907 |
| DAMSON | 993 |
| CARNIVAL* | 911 |
| TURQUOISE | 998 |
| WINEBERRY | 928 |
| BLUE SPRUCE | 906 |
| RED CURRANT | 994 |
| DENIM | 945 |
| GREEN TWEED | 964 |
| SUNFLOWER | 997 |
| TAN | 936 |
| MARINER | 914 |
| WINTER FLECK | 991 |
| RED TWEED | 963 |
| NATURAL FLECK | 961 |
| SANDSTONE | 942 |
| EARTH | 905 |
| FLANNEL | 983 |
| GRAPHITE | 970 |



Shade Samples at

MAIL ORDER SALES

Mail: 4 Lansell Street West,
Bendigo, Victoria 3550 Australia
Phone: Business Hours (03) 5442 4600
Phone/Fax: 24 hours (03) 5442 2918
USA: Phone 1888 235 1993, 5-10pm Sun to Thursday
USA: Fax: 011 613 5442 2918 - 24 hours

YARN SPECIFICATIONS

| Name | Ply | Fibre | Needle size mm | Tension sts/10cm | Length m/200g |
|-----------|-----|----------------------------------------|----------------|------------------|---------------|
| Colonial | 5 | Pure New Wool | 3.75 | 26.5 | 580 |
| Colonial | 8 | | 4.00 | 22.5 | 400 |
| Colonial | 12 | | 6.00 | 16.5 | 260 |
| Classic | 2 | Pure New Wool Machine Washable | 2.75 | 36.0 | 1180 |
| Classic | 3 | | 3.00 | 31.0 | 800 |
| Classic | 5 | | 3.75 | 26.5 | 580 |
| Classic | 8 | | 4.00 | 22.5 | 400 |
| Baby Wool | 3 | Pure New Wool Machine Washable | 3.00 | 32.0 | 960 |
| | 4 | | 3.25 | 28.0 | 720 |
| Harmony | 8 | 30% Wool 69.6% Cotton 0.4% Lycra | 4.00 | 22.0 | 430 |
| Rustic | 5 | Pure New Wool | 3.75 | 26.0 | 560 |
| Rustic | 8 | | 4.00 | 22.0 | 400 |
| Rustic | 12 | | 6.00 | 16.5 | 270 |
| Alpaca | 8 | 100% Alpaca | 4.00 | 22.0 | 400 |
| Aran | 10 | Pure New Wool | 4.50 | 19.0 | 300 |
| Mohair | 8 | 50% Wool/Mohair | 4.00 | 22.0 | 460 |
| Mohair | 12 | | 6.00 | 16.0 | 305 |
| Cotton | 4 | 100% Cotton | 3.00 | 27.0 | 670 |
| Cotton | 8 | | 4.00 | 22.0 | 485 |

Ready Spin Handspinning Sliver 100% Pure New Wool

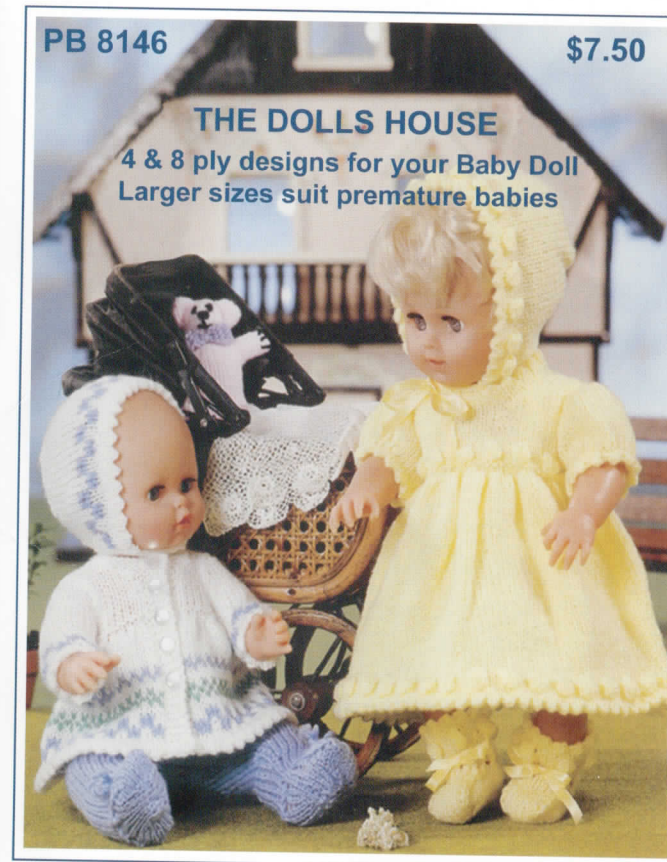


SHADE CARD

2003/2004

PB 8146

\$7.50



THE DOLLS HOUSE
4 & 8 ply designs for your Baby Doll
Larger sizes suit premature babies

BENDIGO
WOOLLEN
MILLS

MAIL ORDER SALES
FACTORY SHOP SALES

Colonial - 5, 8, 12 Ply Pure Wool
 Shades with * 5 & 8 Ply Only

| | |
|-----------------|-----|
| SKY | 005 |
| CHAMOIS | 075 |
| WHITE | 020 |
| SEAMIST | 138 |
| LAVENDER | 106 |
| WOOD ROSE | 104 |
| EUCALYPT | 096 |
| OATMEAL | 041 |
| INDIGO | 092 |
| MAGNOLIA | 013 |
| MIAMI | 136 |
| MING | 127 |
| CYCLAMEN | 142 |
| REGAL | 126 |
| IMPERIAL | 113 |
| TARTAN | 063 |
| RED | 001 |
| CHERRY | 047 |
| DUSTY BLUE | 006 |
| NAVY | 007 |
| ALL SPICE | 143 |
| FOXGLOVE | 144 |
| NUT BROWN | 052 |
| PAPRIKA | 128 |
| BLACK | 021 |
| SILVER | 026 |
| SILVER TWIST* | 141 |
| COLUMBINE* | 134 |
| OCEAN TWEED* | 115 |
| STORM TWIST* | 108 |
| TEMPEST* | 140 |
| GRAPHITE TWIST* | 135 |
| HARLEQUIN* | 131 |



Shade Samples are 8 ply

Harmony - 8 Ply Wool/Cotton/Lycra
Mohair - 8 & 12 Ply 50%Wool/Mohair
Aran - 10 Ply (approx) Pure Wool

| | | |
|----------------------------------------------|---------------|-----|
| H A R M O N Y | AQUARIUS | 263 |
| | LIME | 264 |
| | DEWBERRY | 265 |
| | BORDEAUX | 266 |
| | FRENCH BLUE | 258 |
| | CARIBBEAN | 261 |
| | MIMOSA | 253 |
| | WISTERIA | 260 |
| | GARDENIA | 251 |
| | SPRITE | 254 |
| | REGENCY | 256 |
| | CARNATION | 255 |
| M O H A I R | GREEN SPARKLE | 565 |
| | BLUE SPARKLE | 566 |
| | MUSTARD | 562 |
| | OLIVE GREEN | 563 |
| | AUTUMN | 564 |
| | WILD IRIS | 554 |
| | PURPLE HAZE | 518 |
| | WINE | 520 |
| | VIOLET | 561 |
| | GYPSY | 558 |
| | IVORY | 510 |
| | PARADISE | 560 |
| FIRECRACKER | 548 | |
| A R A N | EBONY | 506 |
| | MAGNOLIA | 013 |
| | SAND | 118 |
| | HEMP | 124 |
| | EUCALYPT | 096 |
| | ALL SPICE | 143 |
| BLUE DENIM | 122 | |



Baby Wool - 4 Ply Machine Washable
 3 Ply in Frost only
Classic - 2,3,5,8 Ply Machine Washable

| | | | |
|----------------------------|----------------------------------------------|------------|-----|
| B A B Y | BABY BLUE | 306 | |
| | CREAM | 302 | |
| | FROST | 312 | |
| | LEMON | 308 | |
| | EGGSHELL | 341 | |
| | PASTEL PINK | 318 | |
| | C L A S S I C | PERIWINKLE | 600 |
| | | MAIZE | 694 |
| | | ALMOND | 602 |
| | | ROSEBUD | 669 |
| | | MUSK | 601 |
| | | HEATHER | 617 |
| | | THISTLE | 619 |
| | | SPINIFEX | 605 |
| | | SOFT PLUM | 620 |
| | | DENIM MIX | 676 |
| RAFFIA | | 603 | |
| TOFFEE | | 691 | |
| OCHRE | | 636 | |
| GUAVA | | 695 | |
| BLUEBERRY | 704 | | |
| SWEET PEA | 705 | | |
| TUSCAN | 706 | | |
| AZTEC | 609 | | |
| PLUM | 626 | | |
| ENSIGN | 667 | | |
| PEACOCK | 663 | | |
| HOLLY | 608 | | |
| WARATAH | 627 | | |
| CRANBERRY | 664 | | |
| INK | 611 | | |
| CLARET | 612 | | |
| PRUSSIAN | 678 | | |
| NEW GOLD | 707 | | |
| DEEP PINK | 679 | | |
| RAVEN | 613 | | |





PLEASE
AFFIX
POSTAGE
STAMP
HERE

BENDIGO WOOLLEN MILLS PTY LTD
LANSSELL STREET
BENDIGO VIC 3550

MOVING - Changing your Address ? My customer number is.....

My name & new address:.....

.....

We would be sorry to lose touch with you.

INTRODUCE A FRIEND - Like a friend to receive a **FREE** shade card ?

My friends name is.....

My friends address.....

.....

My customer number:.....

Thank you for introducing a friend.