

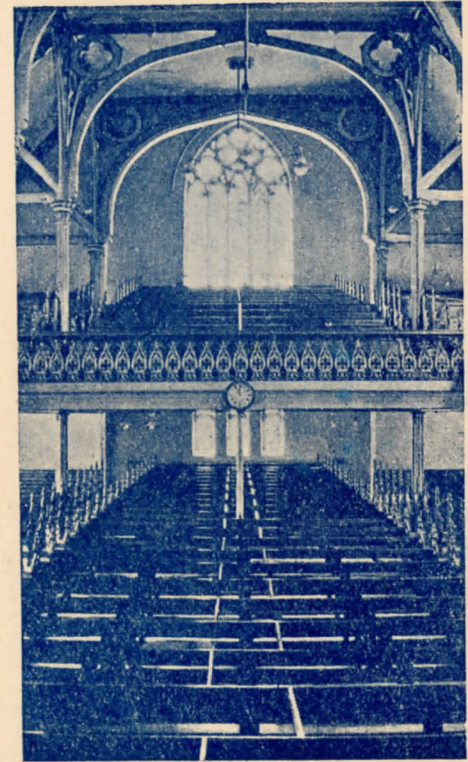
Golden Square  
Methodist Church.

ERECTED 1873  
TO SEAT 1500

A Monument  
OF THE  
Golden Days

A Souvenir

OF THE



Young - People's - Demonstration

ON JUBILEE DAY OF THE ABOVE CHURCH

In Recognition of the Special Gift placed on the "Jubilee Stone," Ap. 1<sup>st</sup> 1923

by Lydia Pethard

G. A. PETHARD,  
TREASURER