

*Our
Stewardship
and
Faith Venture
for*

The Church We Love

GOLDEN SQUARE METHODIST CHURCH NOV. 1957



Dedication

This booklet is gratefully dedicated to the men and women whose vision and inspiration have been translated into a wonderful heritage in the Church and buildings of our Methodist properties at Golden Square; to the former ministers and members who have removed to other communities or who have died in the Faith of Jesus Christ; to the men and women and young people of our present congregation who, by their services or gifts, have helped to promote the Christian Faith and who have accepted the challenge of today and will, by their sacrificial giving, sustain and enlarge the work of this Church; and to the future generations who will learn here to know Him who is the True Light that lighteth the world.

A Message

from Our Minister



Rev. Frank V. Winn, B.A.

I am delighted to be associated with the plans outlined in this brochure. When the whole undertaking was first reviewed, it was felt to be so staggering a task as to be quite beyond our powers.

But Golden Square is a Church of great traditions. It was remembered that in the past the congregation has been sustained by Prayer, by the Sacraments, by the reading of Holy Scripture, and by the Fellowship of Minister and people. We felt we must take our part in extending Christ's Kingdom by these means as did those before us.

And so "before the world with smoke is dim," the men of the Church have met for prayer and guidance. So, too, the women of our Church have sought God's face, and in the blessing which has followed, this great plan has been born.

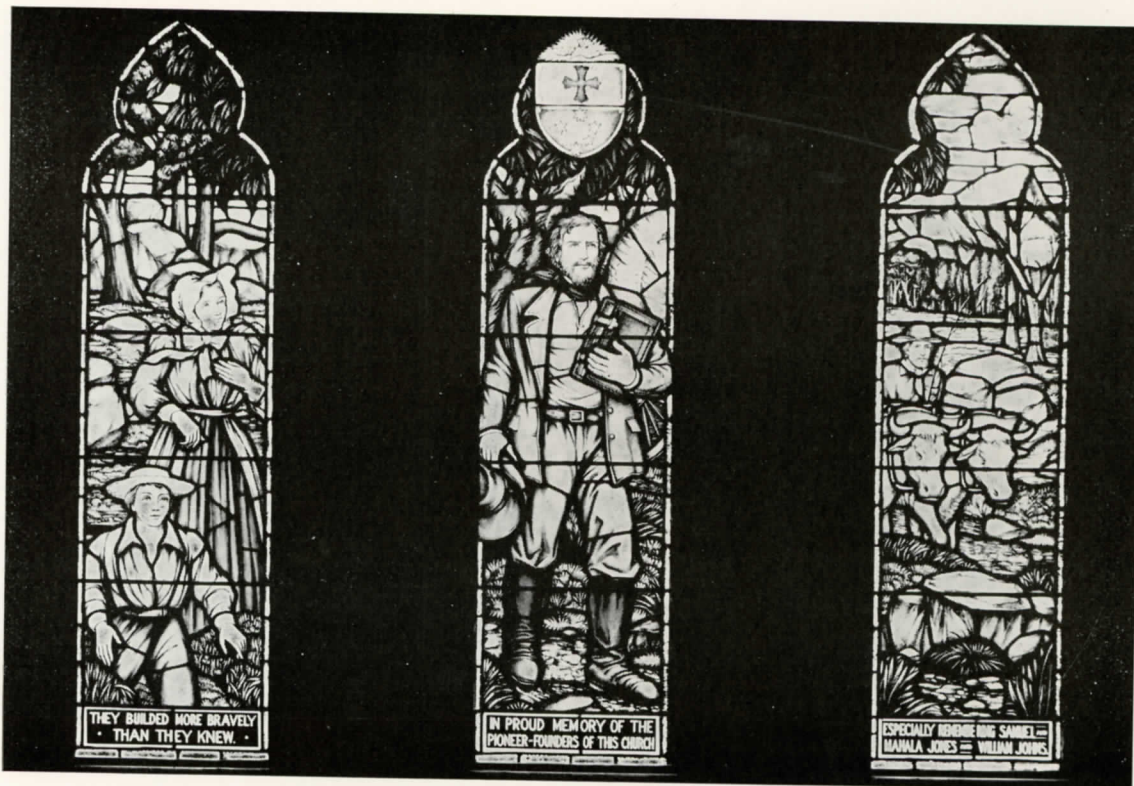
I have been greatly humbled and inspired by the way our prayers have already been answered as we have commenced this task which challenges the imagination and calls for the dedication of all the powers of mind and heart.

I invite you to join with us, and to share the joy of prayer, the satisfaction of sacrifice, and the rejoicing of victory in this venture of Stewardship and Faith for the Church we love.

God bless you all,

Your friend,

Frank V. Winn



In reverent memory of the Pioneers of our Church

Our Heritage

As one looks at the lovely brick Church at Golden Square, with its slender spire pointing men's thoughts to God, it is hard to visualise the beginnings of Methodism here.

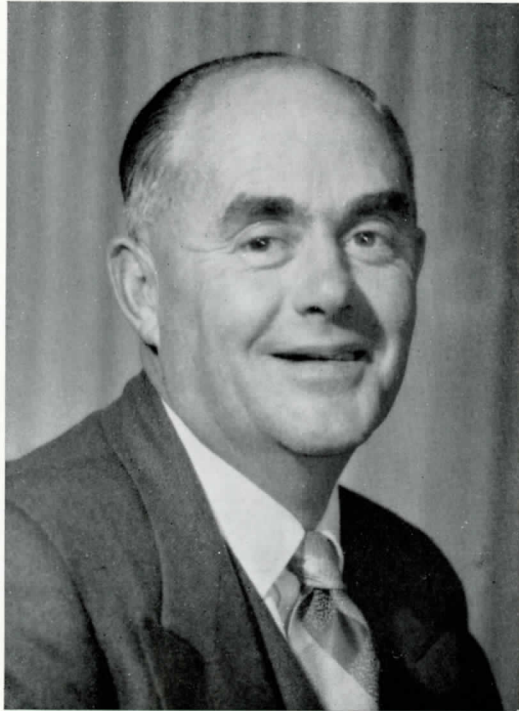
As a goldfield, Bendigo dates from October, 1851, when gold was first discovered at Golden Square—and the first place at which the Gospel was preached in Bendigo was also at Golden Square.

In March, 1852, "Jimmy" Jeffrey, a Methodist Local Preacher from Adelaide, using a stump as his pulpit, preached with eloquence to the miners camped nearby. First a tent, then a wooden building formerly used as a store were the early meeting places.

The first Church was erected in 1852 on the ground of the present Sunday School buildings. A new stone Church was built in 1859, and finally the present imposing building was commenced in January, 1870, and completed in 1873.

The Church, with its noble band of women, its fine body of men, its well-famed choir, beautiful appointments and magnificent pipe-organ, has contributed greatly to the life of the community and indeed the nation. Its Sunday School and youth work has always been notable, and we are proud to know that Rev. Graham Warne, of our Church and Sunday School, will soon be in his first circuit.

We indeed owe a lot to our fathers who have handed down to us a noble tradition. Tradition can be a couch upon which we rest, or a springboard from which we leap. In reverent remembrance of the pioneers and with loyalty to our Lord, may we not rest content with what they have done, but play our part in furthering the work of our Church in our community to the glory of God.



Mr T. F. Perrow, General Chairman

How Much Shall I Give

In careful and prayerful consideration of "How much shall we give?" we should think of several points, for the size of our pledges will depend upon these:

- 1—Our Christian Faith.
- 2—Our interest in the Church programme.
- 3—Our recognition of the need.
- 4—Our concern for extended service.
- 5—Our financial ability.
- 6—Our method of paying the pledges.
- 7—Our willingness to sacrifice.
- 8—Our desire to encourage others to sacrifice.
- 9—Our willingness to trust God and believe His promise.
- 10—Our faithfulness in prayer.

One of the greatest experiences in the life of a Christian is that of helping to maintain a Church. To extend the services of his Church in the community is to widen his own horizons of Christian living and fellowship. Until he has made an investment in the maintenance of his Church, he is more or less accepting the far-sighted charity of others, every time he or his children use a Church.

Remember that the greatest effect of sacrificial pledging is upon the donor himself. The spiritual value of sacrifice has been known to man since before Christianity. There would be no Christians today if it were not for the great sacrifices of our early Christian leaders. You and your family are requested to begin now giving serious prayerful consideration to the amount you will endeavour to contribute for your Church.

MY PLEDGE SHOULD BE . . .

- One determined after prayer for God's guidance.
- One that brings an inner conviction of satisfaction.
- One about which I can talk to others without apology.

Our Needs

Over the next three years we shall require for Circuit Budget	£3,900
Renovations and additions to School Hall, Church and Parsonage	£16,100
	<hr/>
	£20,000



Members of the Church Trust plan for the future

BUILDERS

When we build, let us think that we build for ever.
Let it not be for the present delight nor for present
use alone.

Let it be such work as our descendants will thank us
for, and let us think, as we lay stone upon stone, that a
time is to come when those stones will be held sacred
because our hands have touched them, and that men
will say, as they look upon the labour and wrought
substance of them:

"See! This our Fathers did for us."

—John Ruskin

Our Plan to Meet Our Needs

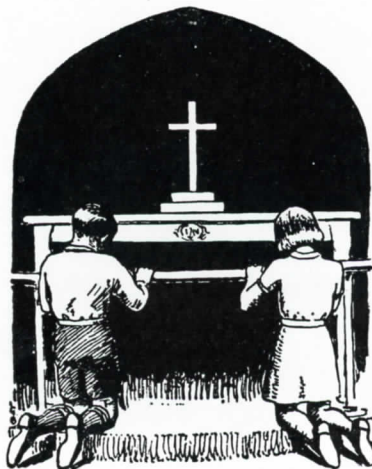
In order to raise the Canvass goal of £20,000 it has been agreed that we will conduct between now and 30th November, 1957—

**AN ORGANISED
INTENSIVE
INDIVIDUAL
FACE-TO-FACE
SOLICITATION
IN THE HOMES
FOR COMBINED FUND PLEDGES
PAYABLE WEEKLY
OVER A 156-WEEK PERIOD
BEGINNING
8th DECEMBER, 1957**

Organised canvassing will be limited to member families, prospective Church members, parents of Sunday School scholars, and any other persons and families who consider themselves affiliated with, or use our Church, but who are not actually members.

The intensive aspect of this canvass means that we will concentrate our efforts to obtain pledges from these families during an intensive period. Individual face-to-face solicitation means that a sufficient number of our Churchmen will be enlisted, organised and qualified as canvassers to visit each family of the Church individually and privately in the homes during the canvass period. There will be no group canvassing in meetings, nor will any canvassing be conducted by mail.

Weekly pledges will be a basic procedure in this canvass. The use of weekly envelopes by every family pledging will not only produce larger financial results, but will also increase regular Church attendance.





Mr Les White, Youth Leader

The Challenge to the Young People

In these pages you will read of a great need and a great plan. We realise today more than ever before the responsibility of the Churches to provide adequate facilities for youth work. It is anticipated in faith that as a result of this Canvass our present Sunday School will be remodelled, and additional new buildings provided. It will be as a result of the sacrificial giving of your parents that these buildings will be possible. We believe that the challenge will be met. It will be your responsibility to see that these facilities become a means of bringing other young people into the Christian fellowship.

The message of the Canvass to all ages is a call to stewardship. Let us pray that we may become faithful stewards not only of our money, but also of our time and talents.

Les. White



"Train up a child in the way he should go; and when he is old he will not depart from it."—Proverbs, 22 : 6

How to Make Our Pledge

The possibility of our Church raising enough in this Combined Fund Canvass will depend entirely on the size of the pledges because the number of potential subscribers is automatically limited to our member families and others interested in our Church activities. For this reason the total amount raised will depend entirely upon the "Standard of Giving" which is established.



Mr J. Frank Mamouney, Initial Gifts Steward

Despite our good intentions, we will not pledge more than a fraction of the amount to be raised unless we all recognise that—

- 1—Giving is a habit—usually a weak token-giving habit.
- 2—"Wallet protection" is an instinct—usually a strong one.
- 3—Our interests follow our money—better-than-token giving will help increase our interest in our Church and—even more important—in our own spiritual lives.
- 4—It is easy to criticize, but it takes courage to give sacrificially.
- 5—Until a Christian family has made at least one sacrificial gift to the building of some Church, they are pauperising their Christianity every time they use any Church building.
- 6—Each of us must ask the Lord in prayer for the answer to "How much can I give?"

Because Christian giving is voluntary, statements of intention and faith to give, called pledges, payable over 156 weeks, will be sought. Thus, all sacrificing together, we shall see exactly the amount we can raise for our Church.

It is proposed that Special Appeals authorised by our Methodist Conference will be liberally covered by this Canvass. When making our pledges, we should include our contributions to these Special Appeals.

We sincerely suggest that, in the quiet of your own room at home, you meditate and ask God for His help and direction in making your pledges.

J. F. Mamouney

Let everyone give as his heart tells him, neither grudgingly nor under compulsion, for God loves the man whose heart is in his gift. After all, God can give you everything that you need, so that you may always have sufficient both for yourselves and for giving away to other people. He who gives the seed to the sower and turns that seed into bread to eat, will give you the seed of generosity to sow and, for harvest, the satisfying bread of good deeds done. The more you are enriched by God the more scope will there be for generous giving, and your gifts, administered through us, will mean that many will thank God.

For your giving does not end in meeting the wants of your fellow-Christians. It also results in an overflowing tide of thanksgiving to God.

Moreover, your very giving proves the reality of your faith, and that means that men thank God that you practise the Gospel that you profess to believe in, as well as for the actual gifts you make to them and to others.

And yet further, men will pray for you and feel drawn to you because you have obviously received a generous measure of the grace of God.

Thank God, then, for His indescribable generosity to you!

11 Corinthians: 9 (Phillips)

Your very Giving Proves the Reality of Your Faith

A SACRIFICIAL GIFT
 is one which is large enough to have
A POSITIVE SPIRITUAL IMPACT
 upon the giver
 and cannot be paid at one time...

A TOKEN GIFT
 is one which is so small
 that it has only
A NEGATIVE IMPACT
 upon the giver...

Our Giving can be of Two Kinds



"Praise, my soul, the King of Heaven,
To His feet thy tribute bring."



Mrs F. V. Winn

You are Invited

Apart from regular services of worship Sunday by Sunday, our Church endeavours to link up its members into activities to promote fellowship, to train in Christian citizenship, and to serve those in need.

The ladies of the Church find that through the Ladies' Guild and the Women's Auxiliary of Overseas Missions there is ample scope to serve our Lord, and at the same time experience a fellowship that is rich indeed.

New members are always welcome, and immediately feel a sense of belonging.

The Ladies' Guild meets at the Sunday School the first Tuesday in the month, at 2.30 p.m.

The Women's Auxiliary of Overseas Missions meets at the Sunday School Hall the second Thursday in the month at 2.30 p.m.

The Church needs you. You need the Church.

Will you join us?

Yours sincerely,

M. Winn



Mrs J. L. Samson, Hostess Chairman

A Word to Women

The role of the women is now decisive. The extent of our support for this Canvass will strongly influence the extent of family giving.

Some of the women of our Church have given sacrificially of their time in an effort to ensure a successful Canvass, and we are hoping that all our womenfolk will indicate their interest in their Church when our menfolk call to discuss this financial programme.

But as the Canvass proceeds, our influence will be greater still, for we have felt very closely the effect the life of the Church has had on the training of our children. In no small way the women will be deciding factors in many homes as to what the Church is worth to them.

Doris M. Samson.



"Whom God hath joined."



"Little ones to Him belong"

The Church

Meets

Our Needs

Think on These Things

Three facts are clear to us all:

- We owe a great deal to the Church.
- That Church is in serious need of financial help for its present programme and its future development.
- We have it in our power to meet the need.

Our Church, with its life and work in the community, was given to us by our fathers, and the least we can do is to make sure that we hand it on in a strong and healthy condition to our children and grandchildren. I sincerely endorse and support the whole idea and commend it to the Methodist people of Golden Square.



Mr J. H. Jenkins, Arrangements Chairman

James H. Jenkins

A Knock at Your Door

A LONG-AWAITED EVENT has come for the members of our Church.

WITHIN THE NEXT WEEK one of your neighbours will be calling on you to talk about our Church development plans. We all know that a project of this size and importance will demand our best efforts.

THE VOLUNTEER CANVASSER who will knock at your door will be one of many. Already he will have made a sacrificial pledge and undergone intensive training for his work. And now he will be sacrificing a great deal of his time as well. He believes in the worthwhileness of our Church and its work. He is proving this by calling on you and others.

RESPECTING your position, the canvasser speaks to you only on the basis that he himself has made an example of sacrifice.

PUTTING YOURSELF in his place, you will realise that he has no easy job— that, no matter how deep his sincerity, he can only do half a job. The other half is yours. Please help him by extending a welcome when he comes, and by listening to his story.

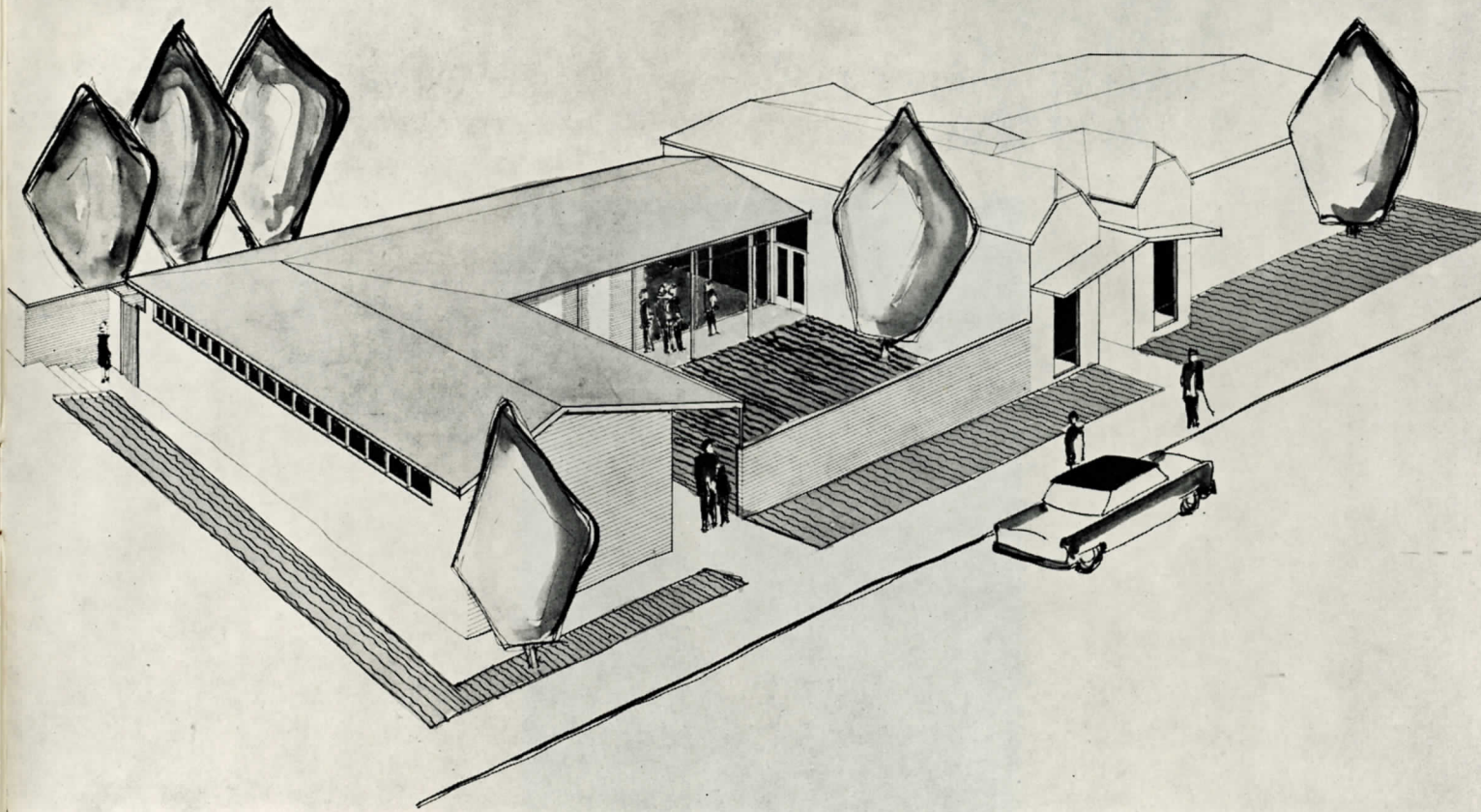
THE RESPONSIBILITY for our Church and the opportunity to sacrifice for it are ours.

LET US FACE the challenge with determination and give of our best . . . in spirit of generosity rather than calculation. It is when God is the centre of our thinking and giving that everything assumes true values —“Where your treasure is, there will your heart be also.”

THINK ON IT IN THE MEANTIME

J. C. Chamney

Teams' Committee Chairman



A FORWARD LOOK—Artist's impression of possible future Sunday School Buildings

There are Two Seas

There are two seas in Palestine. One is fresh and fish are in it. Splashes of green adorn its banks. Trees spread their branches over it, and stretch out their roots to sip its healing water. Along its shores the children play.

The River Jordan makes this sea with sparkling water from the hills. So it laughs in the sunshine. And men build their houses near it, and birds make their nests; and every kind of life is happier because it is there.

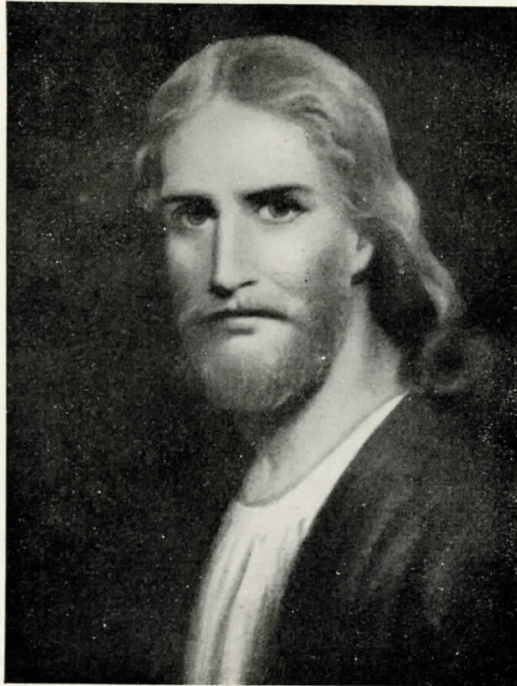
The River Jordan flows on south into another sea. There is no splash of fish, no fluttering leaf, no song of birds, no children's laughter. Travellers choose another route unless on urgent business. The air hangs heavy about its waters and neither man nor beast nor bird will drink.

What makes this difference in these neighbour seas? Not the River Jordan. Not the soil in which they lie; nor the country round about.

This is the difference. The Sea of Galilee receives, but does not keep the Jordan. For every drop that flows into it, another flows out. The giving and receiving go in equal measure. The other sea is shrewder, hoarding its income jealously. It will not be tempted into any generous impulse. Every drop it gets, it keeps. The Sea of Galilee gives and lives. The other sea gives nothing. It is named the Dead Sea.

There are two kinds of people in the world. There are two seas in Palestine.

—BRUCE BARTON



"God so loved the world that He gave . . . that whoso-
ever believes may have . . . life."

OUR PRAYER

Teach us good Lord
To serve Thee as Thou deservest;
To give and not to count the cost;
To fight and not to heed the wounds;
To toil and not to seek for rest;
To labour and not to ask for any reward
Save that of knowing that we do Thy will.
