



ARTS BENDIGO INC.

P.O. BOX 563, BENDIGO, 3550
TELEPHONE (054) 43 3472

SPONSORSHIP SUBMISSION

FOR

MOSAIC PAVEMENT SURROUND

TO THE

***POPPET HEAD LOOKOUT
ROSALIND PARK***

JUNE 1996

APPENDIX 1

MARY HALL

CURRICULUM VITAE -

Born in England in 1939. Came to Australia in 1949. Studied Classics at Sydney University 1957-60; graduated B.A. Hons in Latin.

1972-73 studied drawing and lettering part-time at Seaforth Tech. in Sydney, silkscreen and basic design at the Workshop Arts Centre (WAC), Willoughby, Sydney, and mosaic there in 1973.

Taught mosaic and also basic design at WAC 1974-85.

1980 showed mosaic at Blaxland Gallery, Sydney.

1981 solo exhibition at WAC of mosaic and drawing.

1982 solo exhibition at Printers Gallery, Sydney, of same.

1983 showed a mosaic work in the Blake Prize for Religious Art; this has now been acquired by Sancta Sophia College, Sydney University.

1984 won the Blake Prize with a mosaic in five panels, acquired by the Power House Museum.

1987 solo exhibition at Giles St Gallery, Canberra, of mosaic and watercolour and acrylic painting, on the subject of Lake George.

Smaller commissions have been in private houses, and include wall panels, tables, floors and exterior paving.

1985 Madonna and Child 1500mm sq. on shaped fibreglass form; also twelve medallions 150mm sq. on shaped cement forms set into the narthex wall. These were made for the new chapel at Chevalier College, Burradoo, NSW.

1988 Floor in marble, granite, slate, glass and ceramic of Australian/Hellenic Memorial in Canberra; 13 metre diameter. A map of Greece.

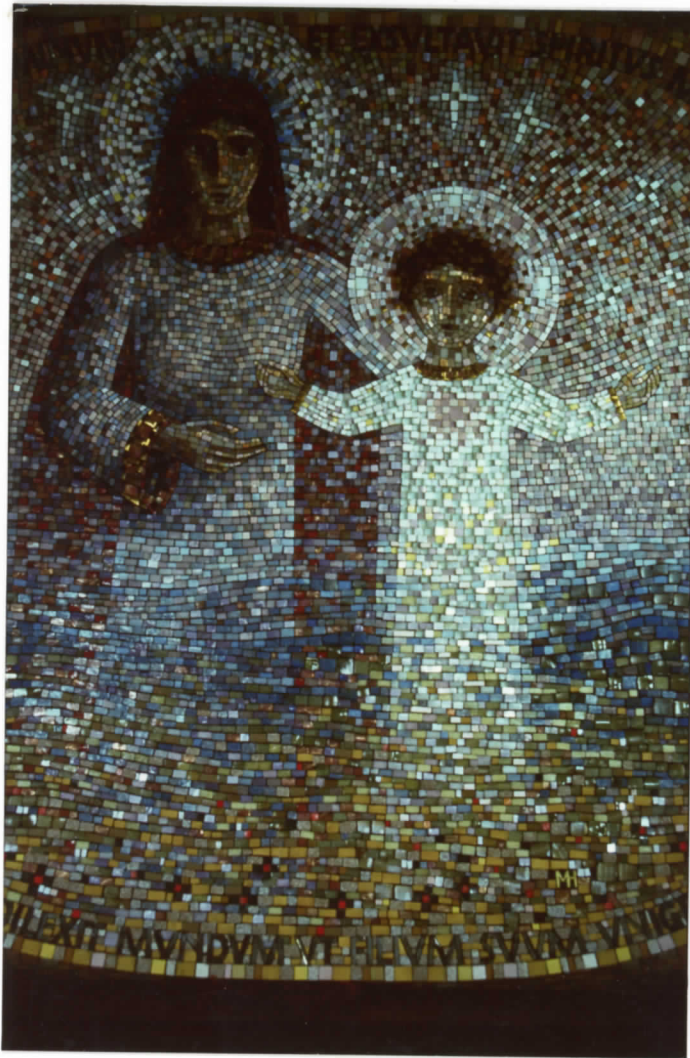
1991 Centenary mural for Hawkesbury Agricultural College. Ten panels on fibrous cement sheet. 10 metres by 2 metres.

1991-92 Mural for Southern Tablelands County Council offices in Goulburn NSW. 4 x 2.4 metres. 2 metre sq mural and 14 Stations of the Cross, each 600 x 400mm for Sacred Heart Church in Pymble, Sydney

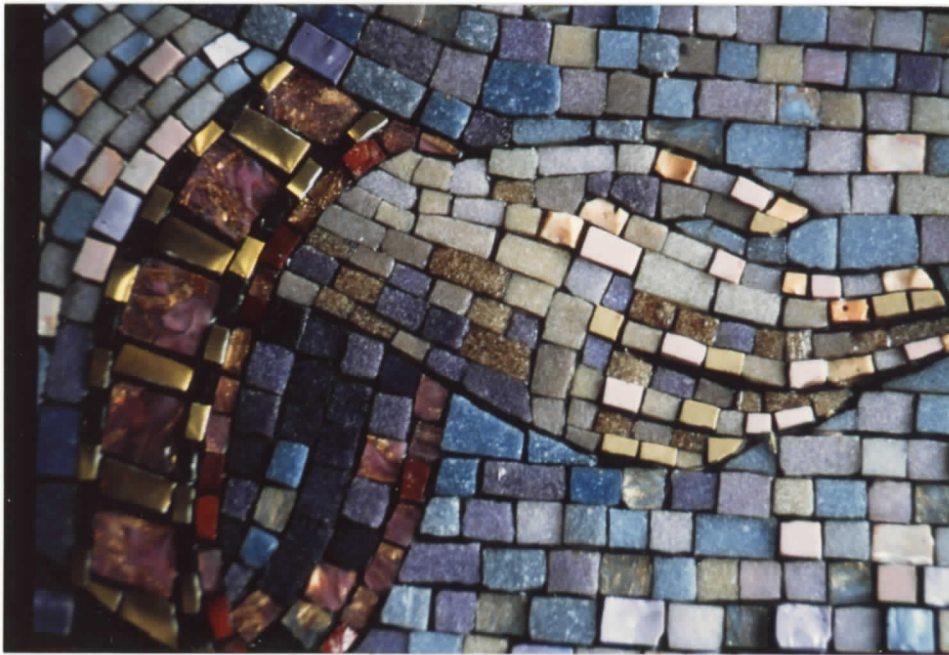
In my work in mosaic I use a great variety of styles and materials; I have used very small tesserae of glass and ceramic in detailed figurative work to large pieces of marble and granite in bigger and more abstract works.

I am also occupied in painting, serigraphy and calligraphy.

Since 1993 I have lived in Victoria and am building a house and studio in the Strzelecki Range near Warragul.



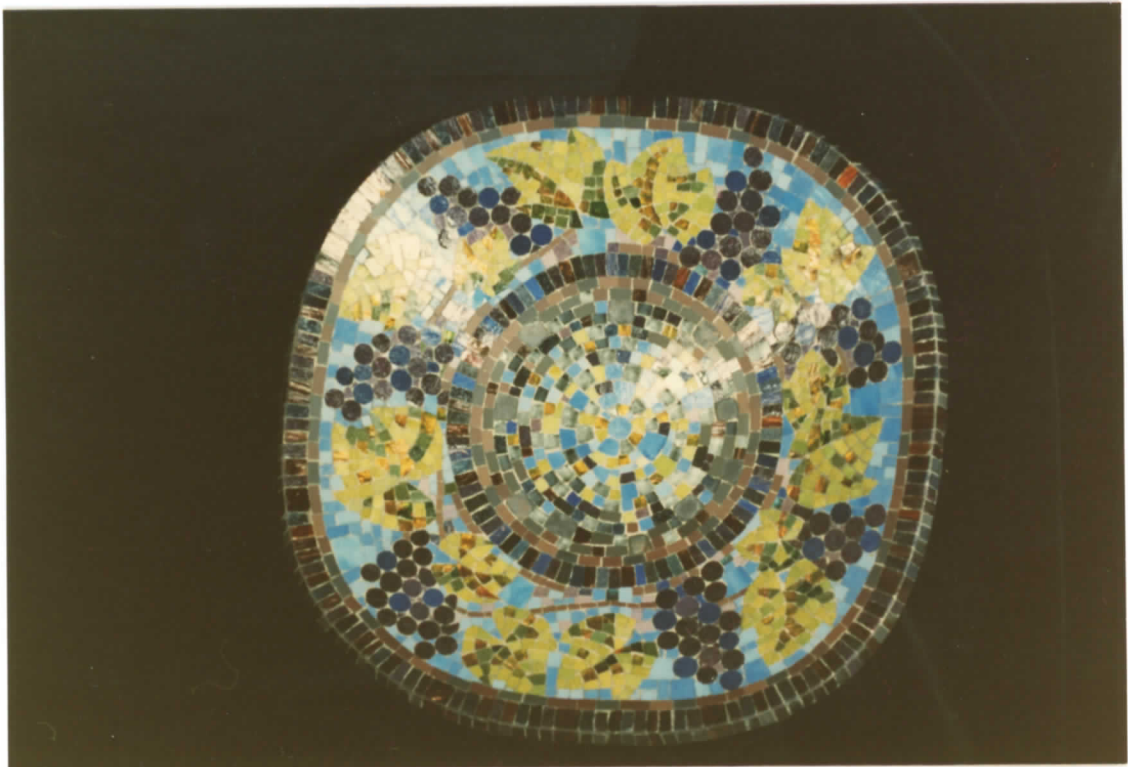
MAJOR
EXAMPLES of
MAERY HALL'S
WORK



NOTE: Detail of HAND from
FIGURES ABOVE



TYPICAL OF MAERY HALL'S
WORK



SOME OF
MAGRY HALL'S
WORKS





DESIGN





DESIGN &
PREPARATION





DESIGN
&
PREPARATION





AUSTRALIAN
HELLENIC
MEMORIAL
CANBERRA

PREPARATION





AUSTRALIAN/
HELLENIC
MEMORIAL
CANBERRA

THE HARD
WORK!





AUSTRALIAN/
HELLENIC
MEMORIAL
CANBERRA

IN PROCESS





①

AUSTRALIAN/
HELLENIC
MEMORIAL
CANBERRA

1 - 2
ARCHITECTURE -
PLACED
BOULDERS



②

3 - View of MOSAIC
FLOOR,



③