

EXTENSIVE SALE BY AUCTION

EXCLUSIVE

Antique Furniture

HORIZONTAL

GRAND BLUTHNER PIANO AND FURNISHINGS

OF

"Lancewood House"

THE FAMED MUELLER RESIDENCE

McLaren St., Bendigo, Vic.

Tuesday, Wednesday & Thursday

May 31st, June 1st & 2nd, 1949

at 10.30 a.m. each day

Bishop & Earl

Auctioneer, 253 Mitchell Street, Bendigo

and

Curnows (Bendigo) F. C. Dyett, Prop.

Auctioneer, Queen Street, Bendigo

Highly Important and Very Extensive
Sale by Auction

— AT —

“Lancewood House”
McLAREN ST., BENDIGO
(The Famed Mueller Residence)

Antique Furnishings

WORKS OF ART, FINE CHINA, INCLUDING DRESDEN AND
CHELSEA, BRONZES, ETC., INLAID MAHOGANY, ROSEWOOD,
CEDAR AND WALNUT FURNISHINGS

SPECIALLY IMPORTED BLUTHNER
HORIZONTAL GRAND PIANO

ALCOCK BILLIARD TABLE, MAGNIFICENT CARPETS
AND THE
COMPLETE CONTENTS OF 18 ROOMS

Bishop & Earl

AUCTIONEER, 253 MITCHELL STREET, BENDIGO
AND

Curnows (Bendigo), F. C. Dyett, Prop.

AUCTIONEER, QUEEN STREET, BENDIGO
Will sell as above under instructions from the Vendor

Worth Repeating

TREASURES.

Many folk who had been entertained at Lancewood House, some of the Mueller family in the old days, were among the visitors who came to the three-day sale held at the house during the week. Friends came from town and country, and a few were able to exchange reminiscences of the happy times they had had at the home, where the mistress was famous for her hospitality and her entertaining. With the selling of the Bluthner piano, a host of memories was revived for Bendigonians or the sons and daughters of those who had been guests at many a musical evening (not a few arranged to benefit char-

Francisco was noted for its Australian atmosphere. Madame Cadorn had a beautiful contralto voice, and her mother was as charming a singer (she was a coloratura soprano) as she was a hostess.

It would have given the late Mrs. Mueller great joy to see the pleasure that people derived from collecting objets d'art from the treasures she had brought to her home, and it was noteworthy that the normal round of meetings, social engagements, shopping and even the daily household duties had to take second place while folk concentrated on buying these possessions to grace their homes or the homes of others.

HISTORIC HOME.

Another old, historic home has passed from the original owners in the sale of Lancewood House, where the Muellers lived. And one who knew the house in its prime looks sadly yet gratefully to the days when Mrs. Mueller was its chatelaine and dispensed that royal hospitality and kindly charity that knew no bounds. Faithfully did she obey the Biblical precept, "Let not your right hand know what your left hand doeth." For she shared her abundance with all around her and did so in such a wonderful way that no one could refuse her bounty. Said one body, "I went into her kitchen and on the table stood numberless bilbies and bottles of milk for which her poor neighbors would call daily." Also, she was a delightful hostess, never so happy as when the chairs around her large dining table were all occupied by many guests. Lancewood House was a social centre of enjoyment. In addition, she had a keen intellect and could give wise advice. Her death left a blank that could not be filled. And so now a house of gracious memories comes to be a Mueller house, and one of the older generations regret its passing.

L. MacGILLIVRAY.

Mackenzie St.,

June 3.

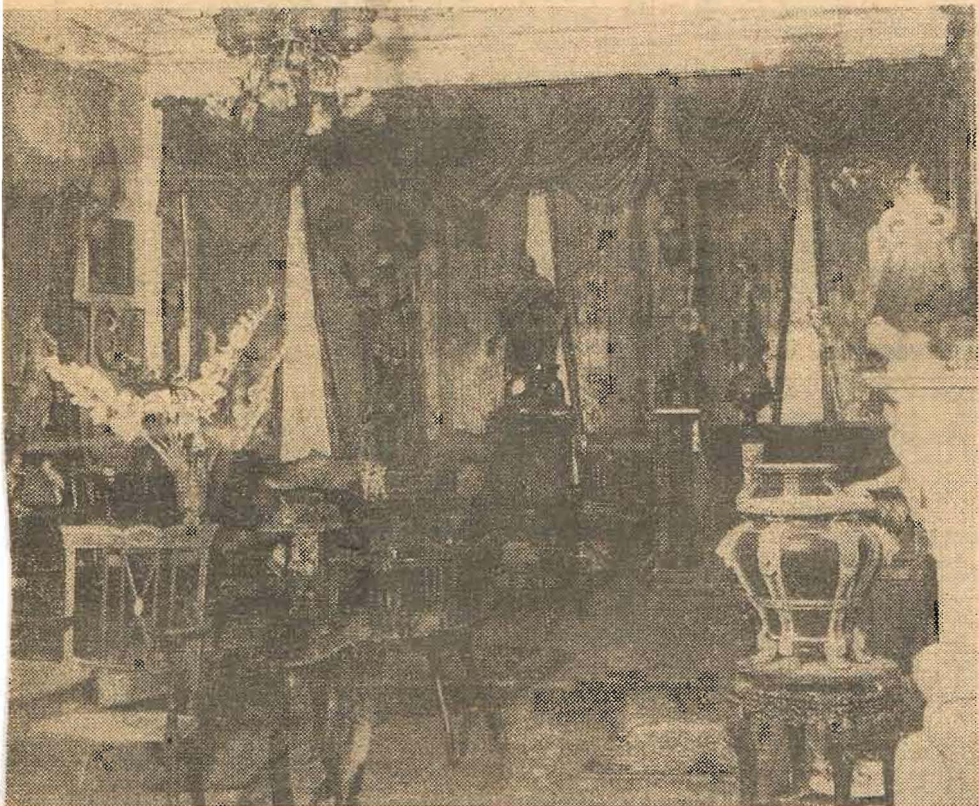
4-6-49

AUCTION SALE CONTINUES.

Keen interest was again shown in the sale of furnishings, and fittings in the celebrated Mueller home, Lancewood House, yesterday. There was spirited bidding for many of the big lots in the dining room, where the 30 foot dining table realised £65. The three-piece Morocco suite sold at £75, the walnut dining chairs at £10 each, the cedar wardrobe £45, walnut sideboard £35 and the cedar dressing table £32/10/. The burr walnut and ash bedroom suite in the main bedroom brought £125. The sale will be continued to-day at 10.30 a.m. with selling in the music room, in which there are many prized lots, including the grand piano and valuable antiques.

2.6.49

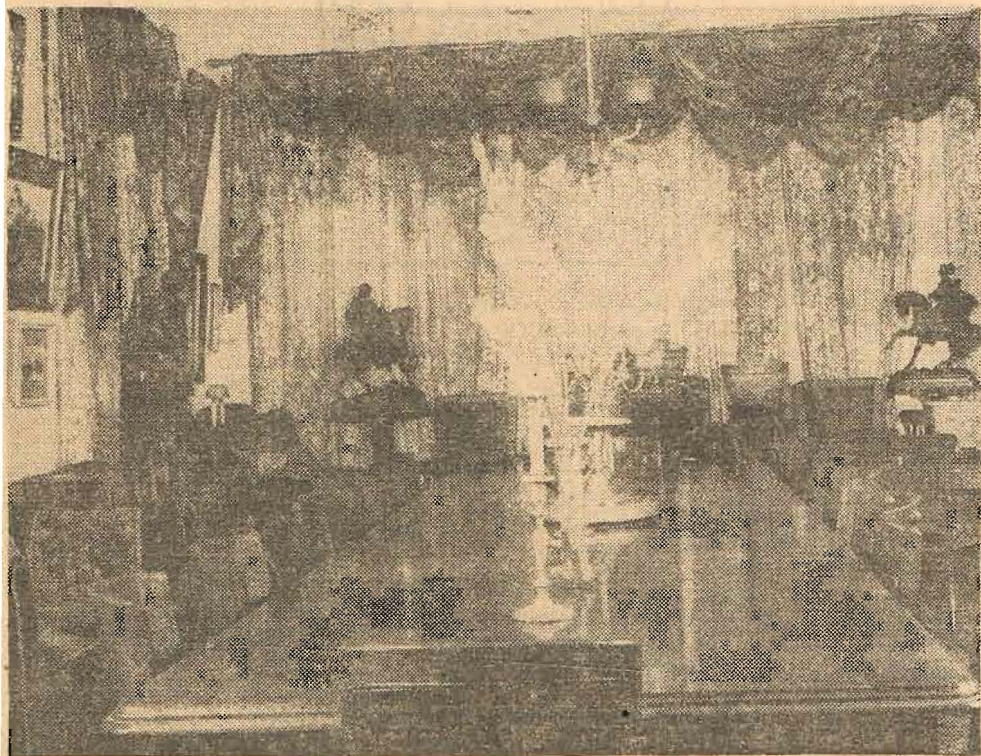
Melba's Voice Was Heard Here



"The Advertiser" Photo Service.

This is the music room at Lancewood House, Bendigo, home of the late Mr. and Mrs. E. Mueller sen., which has been taken over by the Education Department for a men's hostel. Great interest is being taken in the sale of effects, including many antiques, next week. Famous artists have been heard in this music room, including Dame Nellie Melba, Dame Clara Butt, Mme. Ada Crossley, Jan Kubelik, and many others.

Lancewood House Sale



"The Advertiser" Photo Service.

In this dining room at Lancewood House, McLaren Street, Bendigo, home of the Mueller family, many notable people have been entertained. Lord Brassey was a frequent visitor, and many of the early Governors were entertained there. Most overseas visitors of importance who came to Bendigo knew the lavish hospitality dispensed by the Muellers in Bendigo's heyday. The great dining table, with its extensions, accommodated 60 people at a sitting. Furnishings and effects are now being submitted to public auction.

over
Governme

3027

COPY A

Lidia Chancellor
Taraxville
Golden Square

CONDITIONS OF SALE

1—The Highest Bidder to be the purchaser, subject to the Vendor having the right to make one bid, and in the case of Dispute in respect of any Lot, the Auctioneer shall, at his discretion put it up again for Sale or name the Purchaser.

2—A Deposit of 10 per cent. to be paid by the Purchaser, if required by the Auctioneer.

3—No person will be allowed to retract his or her bid when once taken.

4—No Initials or Nom-de-plumre will be accepted from a bidder unless registered with the Auctioneer.

5—No Goods will be delivered during the Sale.

6—All Goods must be paid for and removed at the expense and risk of the Purchaser within 24 hours after the Sale. If not so removed, the deposit (if any) will be forfeited and the Lots re-sold either by Public Auction or Private Contract and any deficiency arising from such second sale, together with all costs, charges and expenses attending thereon, shall be made good by the defaulter at this present sale.

7—No claim for damages or errors of description will be entertained, purchasers are therefore particularly requested to examine the goods before purchasing.

8—The Articles are sold with all faults and the number of same is given as correctly as possible, but should any deficiency arise in the quantity of the goods sold, the Auctioneer will not be bound to deliver more than what is actually in his or the Vendor's possession.

9—No Bids in excess of the maximum price fixed under or by virtue of the National Security (Prices) Regulations will be acknowledged by the Auctioneer on certain Lots, and should more than one person bid the maximum price so fixed, the Auctioneer may decide by drawing lots or otherwise as he may elect to determine the Purchaser and his decision shall be final.

BUYER

NAME

ADDRESS

Buying Initials

Buyers are requested to complete and hand to
Auctioneers' Clerk

Order of Sale

INSPECTION—MONDAY, 30th MAY, ~~11 a.m.~~^{2. P.M.} to 5 p.m.

FIRST DAY—

TUESDAY, MAY 31ST

at 10.30 a.m.

LOTS 1 to 263

ALSO KITCHEN AND YARD

SECOND DAY—

WEDNESDAY, JUNE 1ST

at 10.30 a.m.

LOTS 264 to 635

THIRD DAY—

THURSDAY, JUNE 2ND

at 10.30 a.m.

LOTS 636 to 874

AND ALSO LINEN

NOTE—Luncheon Adjournment from 12.30 to 1 p.m.
Each Day

ADMISSION BY CATALOGUE

Proceeds from Sale of same will be paid to
St. Aidan's Orphanage



DRAWING ROOM—Lots 1-102

Whilst every care has been taken in the compilation of this Catalogue the Auctioneers accept no responsibility for any misdescription.

Will you kindly bring this Catalogue to the Sale, as only a limited number have been published

Catalogue

First Day's Sale
Tuesday, May 31st, 1949
at 10.30 a.m.

KITCHEN AND YARD LOTS TO BE LOTTED AND
SOLD ON FIRST MORNING OF SALE

Drawing Room

- 1—Pair Blue Chinese Vases
£7.10.0 2—Pair Burmese Bamboo Vases, gold lacquered and inlaid in Mother of Pearl
£1.15. 3—Pair Glass Vases (Romeo and Juliet)
£4.2.6 4—Dresden Figure (Cooper)
5—Statuette (Blacksmith)
£4.2.6 6—Pair Chelsea Ornaments G.A.
£3.15. 7—Pair Satsuma Vases
£3. 8—Set Four Fairy Lamps Frank Cambridge
£3.5. 9—Mirrored Overmantle, in Inlaid Rosewood Cooper
25/- 10—Mantleshelf and Drape
£1 11—5 Small Ornaments S. Seymour
£2.15 12—Mirrored Brass Fire Screen (hand painted) W. G. Hampton
13—Marble Kerb
£1 14—Metal Buffalo Ornament Green
£1 15—Ebon. Carved Pedestal R.A.S.
£2 16—Oak Pedestal L.H.
17—Pedestal
£1.10. 18—Bronze Statuette
6/- 19—Three Vases
£5 20—Pair Chelsea Vases G.G.

- 5/- 21—Five Ornaments R.A.S.
- 25/- 22—Three Ornaments and Two Shades Tomp Bolton
- 17/6 23—China Group and 2 Glass Vases
- £ 31 24—Corner Cabinet in Inlaid Rosewood maffray. G.J.F.
- £ 5/- 25—Pottery Vase H.J.F.
- £ 1-15 26—Shell Ornament and Stand A.B.
- £ 2-10 27—Leaf Pattern Dish with Cherub H.D.
- £ 3-5 28—Chelsea Vase A.G.
- 35/- 29—5 Vases
- £ 17 30—Occasional Table in Inlaid Rosewood Errington
- £ 24 31—Pair Hand Painted French Palm Jardinieres
- £ 2-5 32—Carved Blackwood Pedestal
- 34/- ea. 33—Pair Pink Vases
- £ 1-10 34—Pair Glazed Vases Cooper
- £ 2 35—Ornament (Bathing Girl) Rowley
- £ 1-15 36—Pair China Ornaments (damaged) J.M.
- £ 4 9/- 37—Pair English Blue Glass Vases J.M.
- £ 2-10 38—Pair Hand Painted Vases
- 30/- 39—Three Green and Gold Glass Vases
- 30/- 40—Pair Blue and Gold Vases E.J.B.
- 15/- 41—Four Ornaments
- £ 12 42—Pair Glorious Dresden Statuettes W.F.H.
- £ 3-5 43—Pair Hand Painted Vases
- 25/- 44—Mandolin
- 16/- 45—Three Fairy Lamps
- £ 30 46—Eight Ornaments and Runner R.A.S.
- 7/- 47—China Cabinet, in Inlaid Rosewood F.W.
- £ 2-10 48—Two Cushions
- 49—Grey Marble Turned Pedestal and White Marble Statuette R.A.S.
- 30/- 50—Pair Mirrored Bracket Plaques with Fairy Lights J.M.
- £ 8-10 51—Pair Velvet Brocade Curtains, with Mahogany Pelmet
- £ 8-10 52—Pair Velvet Brocade Curtains, with Mahogany Pelmet
- £ 20 53—Inlaid Mahogany Console Table, with Mirror Extension G.J.B.
- £ 4-5 54—Kunai Vase G.J.F.
- 55—Two Fairy Lamps and Three Ornaments
- £ 10 56—Corner Cabinet, in Inlaid Rosewood
- 15/- 57—Tea Pot, Shells and Ornament
- 10/- 58—Mandarin Dish and Three Servers

D. Smyth

- £1.14 59—Four Ornaments *J.B.*
 £2.15 60—Inlaid Draughts Table *Green*
 10/- 61—Two Incense Vases
 6/- 62—Statuette and Shells
 £90 63—Inlaid Rosewood Drawing Room Suite of 10 Pieces. *A.J.H.*
 £3.15 64—Low Chair *V. Saythe*
 12/6 65—Amphora Vase *Green*
 5/- 66—Pair Shells and Ornaments
 £5 67—Indian Cherrywood Prayer Table *E. Tow.*
 £9 68—Envelope Card Table *W.V.H.*
 12/6 69—Three Ornaments
 £1 70—Belleek Dish *C x T.*
 £2 71—Morrocco Monte Carlo Poker Set *W. G. H.*
 £2.12.6 72—Ornaments *G. J. C.*
 £2.2.6 73—Leaf Pattern Mirror *Copper*
 12/6 74—Pair Chinese Figures
 £7/6 75—Marble Figure
 £10 76—Crystal Lamp
 £2 77—Music Canterbury
 78—Music and Books
 79—Jardiniere
 80—Flambe Lacquer Pedestal
 81—Burmese Bamboo Screen
 82—Foot Stool (Star Shape)
 83—Round Foot Stool
 84—Picture (coloured)
 85—Picture (coloured)
 86—Picture (coloured)
 87—Pair Plaques and Painting
 88—Pair Oil Paintings and Plaque
 89—Biscuit Bas-relief Plaques
 90—Three Prints
 £90 91—Magnificent Chandelier, with 9 Lights *F. Cambridge*
 92—Two Oil Paintings and Two Plaques
 93—Two Oil Paintings and Two Plaques
 94—Pair Hand Painted Mirrors
 95—Two Italian Plaques
 96—Four Opal Paintings
 97—Water Colour
 98—Two Plaques and Opal Painting
 99—Painted Mirror and Picture
 100—Coloured Print
 £16.10 101—Inlaid Mahogany Occasional Table *V Saythe*
 102—Two Laquered Trays

Green Drawing Room

- £ 3.10 103—Fender and Irons *W. S. H.*
- £ 2.5 104—Brass Fire Screen
- £ 2 105—Mantle Shelf and Drape
- £ 7.5 106—Pair Ruby Lustre Vases *Valentine*
- £ 4 107—Satsuma Vase *R. F. H.*
- 108—Pair Hand Painted Vases *P. Smith*
- 109—French Clock, with dome *X*
- 35/- 110—Two Vases
- 30/- 111—Two Vases
- 15/- 112—One Vase *Green*
- £ 3 113—Inlaid Mahogany Overmantle *H. J. F.*
- £ 3.5 114—Hand Painted Vase *R. F. H.*
- 10/- 115—Oak Pedestal
- 116—Indian Vase on stand
- £ 2.10 117—Venetian Glass Dish *Stanley*
- £ 4.10 118—Minuet Set *H. R. N.*
- 119—Basket and Imitation Fruit
- £ 2 120—Auto Tray
- £ 2 121—Amphora Ornament
- 10/- 122—Pedestal
- 123—Hand Painted Mirror
- £ 2.10 124—Child's Cedar Chair *G. J. P.*
- £ 3.15 125—Brass Pedestal *Rowley*
- 126—Set Plush Curtains and Pelmet
- 127—Set Plush Curtains and Pelmet
- £ 11.10 128—Pair Inlaid Mahogany Lady's and Gent's Chairs *Vic Emy the*
- £ 20 each
- £ 10 " 129—Pair Inlaid Mahogany Chairs *D. Stanley*
- £ 20 130—Inlaid Mahogany Settee *Green*
- £ 3.5 131—Inlaid Walnut Whatnot *G. J. L.*
- 10/- 132—Three Fairy Lamps and Picture
- 133—Saddlebag Armchair
- 134—Spring Back Arm Chair
- £ 3.10 135—Coffee Table
- 136—Two Cushions and Head Rest
- £ 2 137—Pair Vases
- 15/- 138—Two Ornaments *C. J.*
- £ 2.5 139—Limoges Vase *N. D.*
- 12/6 140—Chinese Tea Pot
- 12/6 141—Chinese Tea Pot
- 25/- 142—Pair Bronze Vases
- 12/6 143—Two Vases, Dish and Two Spoons
- 12/6 144—Vase
- 15/- 145—Five Butter Dishes

£ 2.10. Curtains

307-4.0.0

- 31- 146—Pin Cushion, Brush and Ornament *Genje*
- £50 147—Inlaid Mahogany China Cabinet *W. E. S.*
- 148—Walnut Occasional Table
- 149—Marble Bust
- £2.5. 150—Wood and China Pedestal
- £4-10 151—Dresden Hand Mirror *Butler*
- 107- 152—Sailing Barque Model *Green.*
- £2.10 153—Indian Cherrywood Table *Balding*
- 81- 154—Chinese Ornament
- £20.10 155—Oval Italian Walnut Loo Table *Valentine*
- £18 156—Wilton Carpet *G. 7. 11.*
- 157—Oil Painting by G. Reynolds
- 158—Three China Plaques
- 159—Plaque, Picture and Two Opal Paintings
- 160—Painting
- 161—Painting
- 162—Pair Paintings by G. Luffsman, 1893
- 163—Pair Paintings by M. Wallner *£3.10 J. Hill.*
- 164—Pair Paintings by M. Wallner *£2*
- 165—Painting *107-*
- 166—Two Plaques and three Paintings *57-*
- 167—Print *257-*

Hall

- 168—Pair Hall Chairs
- 169—Italian Walnut Hall Table
- 170—China Jardiniere Stand
- 171—Column Pedestal
- 172—Bronze Statuette
- 173—Japanese Chair
- 174—Marble Pedestal
- 175—Marble Group
- 176—Carved Japanese Hall Chair
- 177—Chinese Bowl and Vase
- 178—Magnificent Walnut Hallstand by Waring and Gillow,
London
- 179—Round Barometer Hours and Thermometer
- 180—Beaded Snake Ornament
- 181—Pair Walnut Hall Chairs
- 182—Ruby Passage Carpet (17ft. 6in. x 3ft.) and Old
Carpet underneath
- 183—Hall Curtains

- 184—Hearth Rug
- 185—Hearth Rug
- 186—Three Pieces Carpet

Billiard Room

- 187—Oak Chair
- £ 1.8 188—Four Vases
- 189—Two Tall Vases
- 107- 190—Epergne Vase and Two Vases
- 32/6 191—Three Vases and Candlestick
- £ 20 192—Italian Walnut China Cabinet *F. Cambridge*
- 157- 193—Blackwood Couch
- £ 55 194—Mahogany Glass Panelled Book Cabinet *H. R. Newell*
(Wells. Earlsford)
- £ 3.5 195—Pair Blue and Gold Vases *Batchelder*
- 35/ 196—Pair Blue and Gold Vases
- 107- 197—Pair Vases and Ornaments
- 101- 198—Picture
- £ 1 199—Pair China Ornaments *F. Hill*
- x 200—Black Kerb (Marble) and Fire Screen
- £ 32.10 201—Cedar Book Cabinet *S. Fawc.*
- 11/- 202—Stool and Brass Jardinere
- 17/6 203—Bronze Jardinere *Hayreane*
- x 204—Bronze Jardinere
- 57- 205—Playing Cards and Scorers
- 71- 206—Three Lamps, Two Ornaments
- £ 2.15. 207—Cedar Side Table
- 12/- 208—Branch Cutters
- 6/- 209—Carpet Stretcher
- 71- 210—Hurricane Lamp
- 11/- 211—Coffee Grinder and Veg. Mincer
- 11/- 212—Sundry Tools
- 81/- 213—Tomahawk and Square
- 11/- 214—New Claw Hammer
- 6/- 215—New Claw Hammer
- 216—Three Saws
- 57- 217—Cleaver
- 4/- 218—Two Hammers
- 3/- 219—Spray, Sand Paper
- 12/- 220—Mallet, Screwdriver and Rule
- 221—Two Engineer's Hammers
- 10/- 222—Three Chisels
- 8/- 223—Secateurs and Fork
- 71/- 224—Rule and Tools

£52.10/- 225A Sheraton Table P. Williams ?

- 9/- 225—Pine Occasional Table and Cover
- 226—Three Brass Cased Rods
- 12/6 227—Gramophone
- 25/- 228—Walnut Occasional Table
- 22/6 229—Walnut Whatnot and Two Wood Candlesticks

Steel Trunk
30/-

- £2 230—Jardiniere
- 231—Set Book Shelves
- 232—Music
- 233—Music
- 234—Books and Magazines
- 235—Books, 2nd Shelf
- 236—Books, 3rd shelf
- 237—Books
- 238—Fifteen Books
- 239—Thirteen Books

- £1 240—Clothes Basket
- 14/- 241—Pedestal and Statuette

£31 242—Full Size Allcock and Taylor Billiard Table, complete with Cues, Balls and Scoring Board

- £1.3.0 { 243—Painting
- 244—Ten Pictures and Painting
- 245—Large Picture
- 246—Six Pictures
- 247—Seven Pictures and Two Plaques
- 248—Carpet Round Billiard Table

£21
£15. Carpet-£8

No. 1 Bedroom

- 249—Two Vases, etc.
- 250—Gilt Pair Glass
- 251—Single Bed and Wire
- 252—Hair Mattress
- 253—Hall Stand and Towel Rail 25/-
- 254—Table and Tall Vase
- 255—Pair Specimen Vases
- 256—Nickel Bed and Palliasse
- 257—Double Hair Mattress
- 258—Panel Mirror
- 259—Pair Curtains and Pole
- 260—Pair Curtains and Pole
- 261—Butler's Tray and Stand
- 262—Drape and Pole over bed
- 263—Three Pictures

Four drawer Cedar Chest. £10.10.0 W.J.F.

Blankets £3. Morris

APPROXIMATELY 100 LOTS OF LINEN
TO BE SOLD ON THIRD DAY

Second Day's Sale
 Wednesday, June 1st, 1949
 at 10.30 a.m.

End Hall

- 264—Pedestal and Statuette with Electric Fittings
- 265—Worn Carpeting
- 266—Pedestal and Cedar Stool
- 267—Bronze Jardiniere
- 268—Cedar Hall Stand

Second Dining Room

32/6
 Capital

- 269—Three Statuettes
- 270—Two Large Pottery Vases
- 271—Vases and Ornaments
- 7/6 272—Pottery Vase
- 273—Four Packs Playing Cards
- 7/8 274—Oak Sideboard
- 7/- 275—Table Runner
- 6/- 276—Water Jug and Two Vases 6/- M.K.
- 6/- 277—Round Tray
- 278—Two Vases 8/- L. Haynes.
- 9/- 279—Comport and Two Vases
- 280—Small Table
- 5/- 281—Pair Blue vases
- 282—Three Statuettes 2/6 J. M.
- 283—Two Lamps 2 7/6 J. M.
- 11/- 284—Pair Vases L. H.
- £2 11/10 285—Marble Clock Balding
- £1 286—Overmantel L. H.
- £1 287—Fire Irons
- 288—Two Enamel Jugs, Pickle Cruet, etc. 6/-
- 289—Eight Saucers
- 290—Twelve Saucers } 14/- Wilson
 Hutchinson
- 7/- 291—Jug and Bowl
- 11/- 292—Seven Assorted Plates
- 10/- 293—Three Ice Plates W. J. H.
- 12/- 294—Assorted Plates H. J. Collins
- 295—Lamp Fitting 10/-
- £2.5.0 { 296—Seven White and Gold Cups and Saucers
 297—Six Saucers J. L.

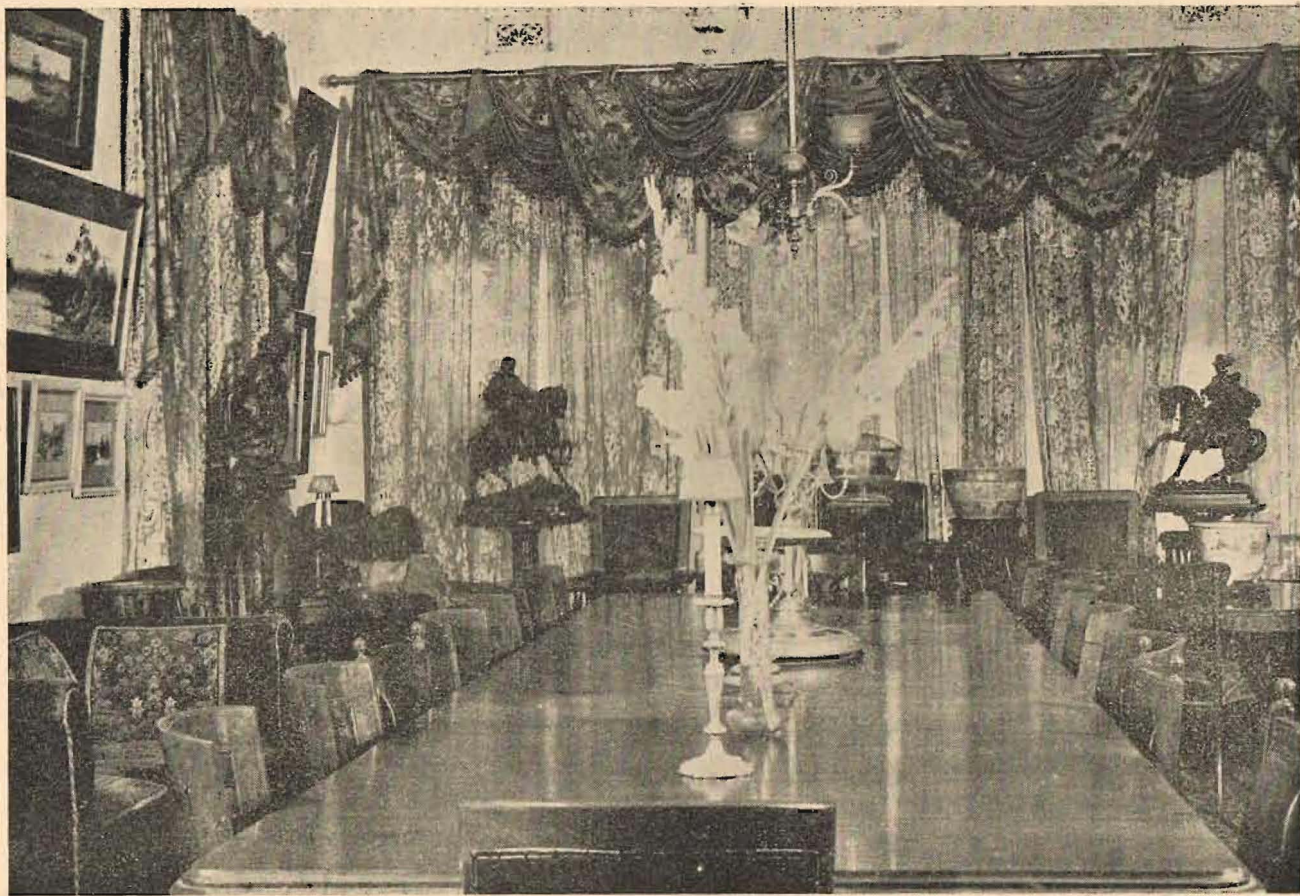
- 298—Eight Saucers
- 12/6 299—E.P. Dishes and Toast Rack
- 10/—300—Glass Dishes
- 30/—301—Three Cups, Five Saucers H. # A.
- 30/—302—Six Cups and Saucers
- 5/—303—Brass Tray and Rule, etc. L. H.
- 3/—304—Three Feed Cups "
- 10/—305—Two Vegetable Dishes and Plates M. Wilson
- 2/—306—Jam Dishes
- 307—Two Glass Bowls
- 10/—308—Eight Saucers, One Cup and Plate L. H.
- 5/—309—Three Vases
- £ 2.2.6 310—Two H.W. Kettles Boyland "
- 14/—311—Plate and Jam Dishes
- 9/—312—Glass Dishes
- 313—E.P. Dish and Cruet Bottles
- 7/—314—Jugs, etc.
- 7/5/—315—China Dishes
- 4/—316—Cheese Dish and Servers
- 13/—317—Butter Dishes
- 15/—318—Muffin Dish and Two Bowls
- 22/6 319—Two Meat Dishes and Vegetable Dish M. Wilson
- £ 1/10 320—Part Doulton Dinner Set, 34 pieces G. J. F.
- £ 1/9 321—100 Piece Blossomware Dinner Set Valentine
- £ 1/14 322—Cedar Extension Table, 15ft. x 4ft. 8in.
- £ 1/2 323—Round Cedar Table Rosewood. N.P.
- 324—Five Dining Chairs
- £ 3 325—Couch
- 326—Cedar Stool
- 327—Nine Pictures
- 328—Walnut Auto Tray

Dining Room

- £ 10.10 329—Blue and Gold Utility Set, 52 pieces Isen
- 22/6 330—Blue-de-Roi 5 Cups, 2 Saucers, Jug and Basin Dunstan
- 6/—331—Blue-de-Roi Grindley Jug and Bowl M. O.
- £ 8 332—Part Blue-de-Roi Dinner Set, 58 pieces W. G. H.
- 30/—333—Four Coffee Cups and Saucers, Heathcote China S. Clarke
- £ 2.5 334—Coffee Jug 14/— G. B. H.
- £ 2.5 335—Two Jugs, Wisteria Ware S. Clarke
- £ 2.7.6 336—Devonware Teapot M. O.
- 337—Seven Saucers, 1 Plate, Gold Leaf Pattern 27/6
- 338—Four-piece Breakfast Set, French China £ 3 Jacka
- 339—Three Jugs 2.7.6 Isen

- 357-340—Two Vases *Z. V.*
 341—Six Crystal Finger Bowls *14/- ea. Hutchinson*
 157-342—Forks and Spoons *Enderlein*
 £1-10. 343—Five Austrian Berry Bowls *Y. James*
 £2-10 344—Six Austrian Berry Bowls *d. E.W.*
 245—Four Plates, 4 Saucers, 1 Cup
 17/- 346—Six B. and B. Plates, Foley China *Rowley*
 19/5 347—Twelve Asst. Saucers *Y. Bolton*
 7/1 348—Six Bread and Butter Plates *D. Bright-*
 6/1 349—Fancy Cup and Saucer (damaged) *J. Haw.*
 £2-5. 350—Brass Fruit Comport *C. X. Taylor.*
 351—Chinese Coffee Pot
 352—Thirteen Coffee Spoons
 353—Three Swiggle Sticks *J. M.*
 354—Four White and Gold French Cake Dishes *35/- Jaen*
 355—China Tea Tray *35/- Y. Smythe*
 356—Crystal Tray *45/- J. N.*
 17/- *cup* 357—Foley China Plates *Home*
 1-2-6 358—Scone Dish *27/6 Gray.*
 10/- 359—Two Large Fancy Plates *Home*
 360—Six Saucers, 2 Plates, White and Gold *12/6*
 157-361—China Teapot Stand and Butter Dishes, 9 pieces *undecided*
 £2-5. 362—Thirteen Glass Custard Cups
 £4-10 363—Large EP. Rose Bowl and Pedestal Base *E. T.*
 10/- 364—Six Dessert Forks
 12/- 365—Six Teaspoons
 366—Six Dessert Spoons
 367—Five Table Spoons
 11/- *M.C.* 368—Six Dinner Forks *R. V. Greig*
Thomas Cannon 369—Brass Riding Shoe Horn *Jaen*
 £1-1. 370—Pickle Cruet *16/- J. M.*
 £2-5 371—Liquor Decanter and 6 Glasses *Marcollo*
 £1-17-6 372—Serviette Rings *11/-*
 £1 } 373—Ten Tumblers *Brownson*
 £4-15 } 374—Six Glasses
 375—Pair Candlesticks *V. M.*
 Each £2-15. 376—Souvenir Bowl *30/- A. E. Gray*
 30/- 377—Two Foley China Bowls *Shorman*
 £1-15 378—Three E.P. Trays *Z. V.*
 12/- 379—Carved Wood Tray *Shorman*
 32/6 380—Piece Tapestry and *Rammer* *A. E. W.*
 381—Cake Knife and Fork *W. G. H.*
 382—Dinner Set, 23 pieces *£3-15. Maybe*
 383—Two Large Trays
 57 384—Stand and Basket *22/- J. M.*
 £5-5 385—Two Trays *13/- R. B. Gray.*
 £9-15 386—Mohair Table Cover *G. J. L. E.*

Violin £5. L. H.
 Clock £9-10.
 Ladle £8. J. M.



DINING ROOM—Lots 329-492

- 41- 387—Dominoes
- £9-15- 388—Mohair Table Cover S. J. M. C. Tablecloth £2.5-
- £5.10 389—Pair Bronze Vases R. G. Sanderman " 7
- £5.10 390—Pair Ornamental Pottery Vases " " 8 Rowle
- £5 391—Pair Cameo Vases A. Bolton
- £5 392—Sarcophagus Vase H. Wright-
- £5-10 393—Pair Bronze Figures Hopel
- 394—Set Three French Bronzes £71. R. A. S.
- 395—Swiss Beer Jug £3
- 396—Tooled Leather Cigarette Box 10/-
- 397—Crystal Decanter £1 Fav.
- 398—Bronze Urn Vase £9-10. Henderson
- 399—Glasses } 27/6 Jacka
- 400—Glasses }
- 401—Four Soup Plates
- 402—Five Austrian Fruit Plates
- 403—Glass Comport 12/6 L. H.
- 404—Two Jugs 11/-
- 405—Six Dinner Knives £2.10 35/- D. G. H.
- 406—Six Dessert Knives 30/-
- 407—Bust
- 408—Ebon. Pedestal £5-10. R. A. S.
- 409—Lotus Bronze Jardiniere
- 410—Lotus Bronze Jardiniere £5-10. L. C. Jeffrey
- 411—Lotus Bronze Vase
- 412—Pair Brass Bowls 35/- Layton.
- 413—Silk Runner 10/-
- S. Seymour 414—Jardiniere
- 415—Pair Comports (damaged) 5/-
- 416—Palm Jardiniere £2
- 417—Pestle, Brush, Tray 10/-
- 418—Runner 9/-
- 419—Pair Cedar Dining Chairs £10. Tony Bolton
- 420—Set Elephants 30/-
- 421—Mahogany Occasional Table £7. D. Smyth
- 422—Bust £2-10. L. C. Jeffrey.
- 30/- 423—Animal Group
- 424—Brass Cigar Box 10/- Mr Fav.
- 425—Inlaid Italian Oval Occasional Table £9. Mr Horne
- 17-10. Gery. 426—Pedestal £4-10. D. Smyth.
- 427—4-Pce. Saddlebag Lounge Suite £13-10 J. M.
- 428—Pedestal £4 Carved
- 429—Copper Tray 10/-
- 430—Brass Tray 11/-
- 431—Wood Tray 15/-

- £9 432—Bronze Figure, by "Moreau" W. S. Hampton
 433—Ebon. Pedestal £6-10
 £1 434—Chess Set Hutch.
 £25 435—Italian Walnut Circular Folding Card Table M. Piccolo
 £12 436—Mounted Bronze, "The Arab," 1880 Exhibition J. Mc.
 £15 437—Spanish Knight, mounted in bronze Sanderman
 £17-10 438—Blackwood Club Chair } Saw
 £10 439—Blackwood Club Chair }
 £5-10 440—Indian Carved Pedestal L. Jeffery
 441—Indian Carved Pedestal
 £3 442—Bronze Vase H.J.
 £4 443—Chinese Punch Bowl
 £20 444—Cedar Arm Chair F. Jones
 £2-10 445—Round Draughts Table Bellman
 £2 446—Round Draughts Table M. J. J. B.
 £3 447—Oval Draughts Table J. A. K.
 448—Three Sets Curtains and Vallance £15 Sanderman
 £75 449—3-pce. Morocco Leather Dining Suite, Walnut frames M. Faw.
 450—Pair Beaten Brass Jardiniere £2-5. H. J. J. B.
 451—Pair Indian Carved Pedestals £9-10 M. Mac
 452—Brass Fire Irons £3 G. J. B.
 453—China Palm Stand £2 J. M. Emery
 £9-10 454—Walnut Overmantel House
 £35 455—Magnificent Walnut Sideboard, 7ft. 6in long J. M. Emery
 £22-10 456—Walnut Dinner Waggon, 4ft. 6in, to match sideboard O. W.
 £65 457—Massive Extension Walnut Dining Table, will extend
 to 30 feet Frank Jones
 £11 ea. 458—Six Walnut Dining Chairs V. Smith.
 £10 459—Walnut Dining Chair, in hide Enderlien
 £4-10 460—Walnut Dining Chair O. W.
 £6 461—Pair Walnut Dining Chairs
 £5 462—One Walnut Dining Chair } O. W.
 £5 463—One Walnut Dining Chair }
 464—Lacquer Plaque, inlaid in Mother of Pearl
 465—Oil Painting by Walmer 22/6
 466—Lacquer Plaque, inlaid Mother of Pearl
 467—Set 7 Bird Paintings, Neville W. Caley £20
 468—Pair Water Colours £2-5
 469—Pair Water Colours £2.

- 470—Water Colour *10/-*
- 471—Water Colour, by H. Tebbitt *£ 7-10*
- 472—Water Colour *5/6*
- 473—Water Colour
- 474—Pair Oil Paintings, by W. Short *30/- J. McE.*
- 475—Italian Candlebra Mirror *£10. W. G. H.*
- 476—Kaufmann Plaque *£6. G. Rembold.*
- 477—Antimony Bas-relief Plaque *£6. W. G. H.*
- 478—Water Colour *£ 2-10*
- 479—Oil Painting *2/6*
- 480—Oil Painting by Luffsmann *£5 W. D. Smyth.*
- 481—Oil Painting by Luffsmann *£2 } O. W.*
- 482—Oil Painting by Luffsmann *£5 }*
- 483—Water Colour by Gladstone Eyre *£ 2-10. Baldrey*
- 484—Three Oil Paintings by D. Hinchcliffe *2/7-*
- 485—Pair Oil Paintings
- 486—Still Life and Opal Paintings
- 487—Pair Oil Paintings by Luffsmann
- 488—Oil Painting by Luffsmann
- 489—Etchings
- 490—Oil Painting by Wallner
- 491—Oil Painting by Luffsmann
- £60* 492—Wilton Carpet, 30ft. x 13ft. 6in., in excellent order

Upper Hall

- £3-10* 493—Ax. Stair Carpet and Brass Treads
- £8* 494—Large Red and Gold Handled Vase
- £4-10* 495—Carved Walnut Pedestal
- £8* 496—Large Red and Gold Handled Vase } *W. R. T. H.*
- £4-10* 497—Carved Walnut Pedestal
- 498—Red Hall Carpet, 11yds.
- 499—Cedar Hall Table
- £6-10* 500—Iron Box Safe *Roberts*
- £32-10* 501—Mahogany Dressing Table, with mirror *G. J. B.*
- £11* 502—8-drawer Scotch Cedar Chest *Harpur*
- 503—Filter Container
- 504—Door Stop
- £16* 505—Double Doored Mirrored Walnut Wardrobe, 3 drawers

Upstairs No. 1 Bedroom

- | | | | |
|------------|---|---|-----------|
| | | 506—Cream and Brass Single Bed and Wire | L. H. |
| | | 507—Hair Mattress | 10/- 9.8. |
| | | 508—Three Pillows | 10/- 9.7. |
| | | 509—Three Pillows | 13/- 9.9. |
| | | 510—Three Pillows | |
| | | 511—Three Pillows | 9/- |
| 11/- Beads | { | 512—Tin Hat Box and Sundries | £1 £1 |
| | | 513—Double Brass Bed and Wire Mattress | £1 |
| | | 514—Double Horsehair Mattress | |
| | | 515—Two Pillows | 10/- |
| | | 516—Three Cushions | 6/- |
| | | 517—Two Pillows | |
| | | 518—Two Pillows | |
| | | 519—Bolster and Bedspreads | 9/- |
| | | 520—Table and Chair | 5/- |
| | | 521—Four fold Screen | |
| £45 | | 522—Double Door Cedar Wardrobe | Bright- |
| 17/- | | 523—8-Drawer Cedar Chest | G. M. |
| 5/- | | 524—Wall Plate | M. C. |
| 6/- | | 525—Pictures on walls | H. B. |
| | | 526—Platform Rocker | 4/- |
| 21/- | | 527—Towel Rail | G. J. P |
| | | 528—Bamboo Occ. Table | |
| £11 | | 529—Double Door Mirrored Wardrobe | Rowley |
| | | 530—Wall Mirror | 1.2.6 |
| | | 531—Two Vases | |
| £15 | | 532—7-drawer Cedar Chest | |
| 11/- | | 533—Hall Curtains | |

Main Bedroom

- | | | | |
|---------|--|--|---------|
| | | 534—Pair Glass Vases | |
| | | 535—Pair Glass Vases | Bright- |
| £1 | | 536—Vase | Wheeler |
| | | 537—Toilet Mirror | |
| 10/- | | 538—Three Water Jugs and Three Glasses | L. H. |
| | | 539—Jardiniere | |
| 25/- | | 540—Bedroom Pail | |
| £1-10.0 | | 541—Double Brass Bed and Wire | £1-10.0 |
| | | 542—Double Hair Mattress | |
| | | 543—Double Hair Mattress | |
| | | 544—Three Bolsters and Pillow | |

- £5-60 *G.I.P.* 545—Three Bedspreads *24/-* *30/- Eiderdown*
 546—Bedroom Arm Chair
 547—Table and Basket *20/-*
 £6-15 548—Bedroom Couch *G.I.P.*
 £125 549—Glorious 6-Pce Burr Walnut and Ash Bedroom Suite,
 comprising Triple Door Moth-proof Wardrobe, 8-
 drawer Chest, Dressing Table, Washstand, Pedestal,
 Cupboard and Commode
 550—Overmantel
 31/- 551—Three Chambers *H.E. Thompson*
 25/- 552—Single Brass Bed and Wire
 9/- 553—Pillow Shams *13/- S. Clarke*
 554—Bolster and Sheet
 555—Two Electric Irons
 17/6 556—Single Hair Mattress
 557—One Cane Seat Chair
 558—Small Chair
 559—Eight Pictures *9/-*
 560—Axminster Carpet, 18ft. x 15ft.
 561—Five Curtains

Dressing Room

- £12-10 562—Five-drawer Cedar Chest
 £11-10 563—Cedar Toilet Mirror
 564—Ven. Chair and Table
 565—Chair
 566—Pictures
 567—Mirror

Bathroom

- 568—Linen Chest
 569—Column Pedestal

No. 3 Bedroom

- 570—Single Bed and Wire
 571—Cedar Wardrobe
 572—Bedroom Chair
 573—Towel Rail
 574—Cedar Duchesse Chest
 575—Cedar Linen Press

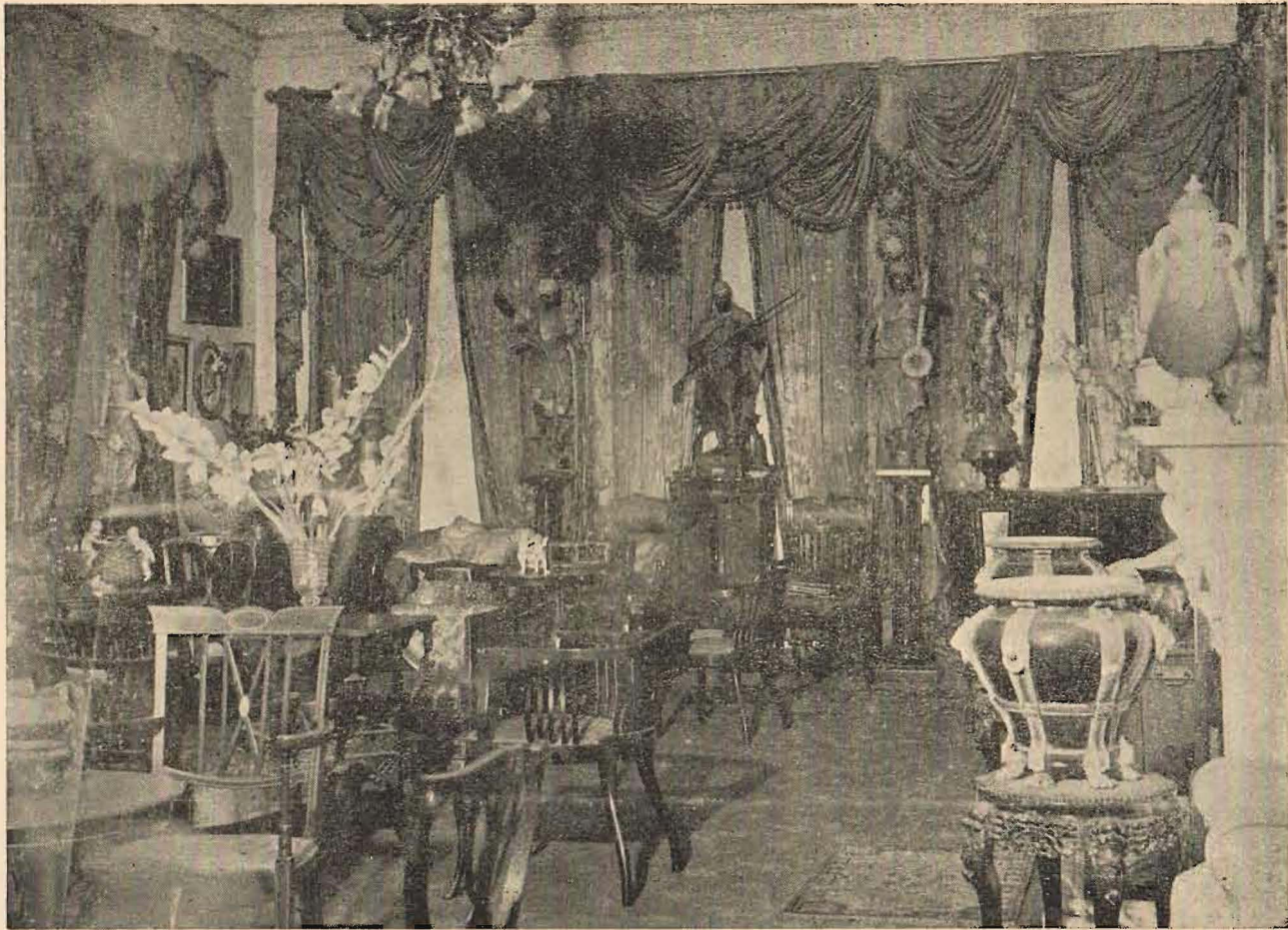
Hall

- 576—Large Minton Jardiniere
577—Pierglass, 6 x 4
578—Brass Finger Bowl and Vase
579—Boy and Girl Heads Statuettes
580—Auto Tray
581—Wall Drapings
582—Brass Gong
583—Chinese Melon Plate *£9. Vera Bolton*
584—Walnut Music and China Cabinet
585—Brass Jardiniere
586—Ebony Stand
587—Chinese Collapsible Chair
588—Carved English Oak Prayer Chair
589—Copper Jardiniere
590—Carved Walnut Pedestal
591—English Oak Hall Settee
592—Two Oil Paintings, 4 Pictures *L.H.*
593—Wall Drape *17/6*
594—Large China Jardiniere *£2.*
595—Playing Cards *10/1-*
596—Fancy Candles
597—Two Imari Wall Plates *£1-10-0*
598—Two Bowls and Butter Dishes
599—Seven Fancy Saucers
600—Nine Saucers *6/8-*
601—Plate and Bowl *17/1-*
602—Four Fancy Plates
603—Hall Table
604—Curtains *5/-*
605—Hall Carpet

No. 4 Bedroom

- 606—Mirror Collar Boxes
607—Four Brushes
608—Five Books
609—Six Books
610—Six Books
611—Five Books
612—Six Books
613—Four Books
614—Seven Books
615—Magazines and Suit Case

- 616—Card Table
617—Table Cover
618—Four Vases
619—Galleon Model Ship
L-2.5.0 620—Lamp and Sundries
621—Four Vols. Dictionary
622—Seven Books
623—19 Vol. Charles Dickens' Works
624—Ten Books |
625—Five Books
626—Book Shelves
627—Invalid Table
628—Cedar Table
629—3-Pce. Bedroom Suite, English Oak
630—Dble. Brass Bed and Wire, Hair Mattress
631—Two Chairs
632—Mirror and Pictures
633—Overmantel
634—Curtain and Poles
635—Carpet (in poor condition)



MUSIC ROOM—Lots 636-834

Third Day's Sale

Thursday, June 2nd, 1949

at 10.30 a.m.

LINEN

APPROXIMATELY 100 LOTS OF LINEN
TO BE SOLD ON THIRD DAY

Music Room

- £2-15.0 636—Brass Fire Irons C. X. Taylor
£6-7/6 637—Fire Brush
£6-10 638—Pair Tall Chinese Vases Hutchinson
£1-15 639—Pair Doulton Vases M. O. O.
640—Doulton Vase
£3 641—Pair Doulton Jug Vases, hand painted Carmichael
12/6 642—Finger Bowl and Ornament Gordon W.
£4 643—Pair Doulton Jug Vases G. J. P.
30/- 644—Figure "Lady"
£13-10/6 645—Mahogany Overmantle W. Jeffrey
£11 646—Pair Minton Jardinières A. G. Spencer
£6-10 647—Indian Carved Ebony Pedestals, with Marble Inset G. Bennetts
15/- 648—Statuette
649—Statuette £1
£4 650—China Vase M. Ross
£2 651—Music G. W.
652—Music
£30 653—Inlaid Rosewood Music Canterbury, Mirrored Front M. G. Grefor
£8 654—Armchair V. J.
£5-5-0 655—Pair Austrian Tall Vases £6-15-0
656—Austrian Figure C. X. J.
£5 657—Amphora Statuette, "Oxen" Vincent-Kelly
£5 658—Pair Alabaster Vases and Ornaments F. V.
£1 659—Bronze Incense Burner and Ornaments L. C. Jeffrey
£1 660—Two Vol. Encyclopedia Fav.
£2-15 661—Six Small Figures G. Stammers
£1 662—Ornamental Vase Alan Hill
15/- 663—Two Vases M. C. O.
25/- 664—Seven Saucers G. J. F.
£1 665—Small China Figures C. X. Taylor
£37-10 666—Mahogany China Cabinet V. S. (Coyth?)

£1 Flat vase H.C.S.
157- ornaments
57- plate - King-

- £6 667—Armchair V. James
£8-10 668—Pair Figures on Twin Column Pedestal M. Mahon
£3-10 669—Blue Hand-painted Vase
£7 670—Indian Carved Pedestal Lay.
£115 671—Beautiful Mahogany Entrance Hall Mirror, with
Rug Box (6ft. x 4ft.) A.E.W. (Wallis)
£5 672—Silk Tapestry Drape A.E.W.
£10 673—Large Doulton Jardiniere A.E.W.
£4-10 674—Indian Carved Pedestal G.J.P.
£1 675—Statuette V.S.
£2 676—Dresden Mirror O.D.
257-677—Small Teapot and Pedestal Shaw
Pigeon blood 678—Ruby Vase 157- O.D.
£2 679—Chinese Buddha M. Green
680—Square Crystal Dish 57-
681—Figure 176 Green
£7 682—Basket Vase Bright
£2 683—Shell Vase Taylor M.
257-684—Three Fairy Lights S. Seymour
157-685—Bicycle Ornament
686—Two Austrian Plates £2 Bright
157-687—Basket Vase J. Hill
12/6 688—Four Ornaments
12/6 689—Boat Vase Wakepeace
367-690—Basket Ornament E.B.D.
£32-10 691—Mahogany Corner Cabinet S.P. Hyett
£2-10 692—Statuette G.P.H.
£3-15 693—Indian Carved Pedestal L.C. Jeffrey
£37-10 694—Mahogany Couch, upholstered Old Gold Satin E. Fav.
£5 695—Arm Chair
696—Chinese Teapot 301- Webster
301- 697—Shell Vase R.B.G.
£10 698—Inlaid Mahogany Occasional Table Errington
£6-10 699—Venetian Glass Bowl Bright
damaged 700—Pomade Jar £1 O.D. Seymour
£1 701—Vase and Elephant Ornament
£2-10 702—Bronze Japanese Figure Escelby
£19 703—Mahogany Round Card Table, 4 drawers D. Smyth
£5-10 704—Pair Doulton Vases P. Smith
£4-10 705—Amphora Statuette "Bear" Enderlein
257- 706—Pair Doulton Vases G.S.D.
307- 707—Pair Chinese Bronze Vases L.C. Jeffrey
257- 708—Chinese Incense Burner
709—Bronze Donkeys £1-10

- £1-5/6 710—Tuscan Ornament and Green Vase *Carmichael.*
- £4-10 711—Pair Austrian Figures *M. A. D.*
- £2 712—Blue Doulton Vase *Cavanga*
- £3-10 713—Pair Electrical Brackets
- £3-10 714—Doulton Vase *Cavanga*
- £3 715—Pair Doulton Jug Vases *"*
- 15/ 716—Pair Figures *G. D.*
- 25/ 717—Pair Figures *Genie*
- 5/ 718—Doulton Dish and Chinese Bowl *H. J. F.*
- 30/ 719—Ash Tray and Card Indicator *Bright-*
- 30/ 720—Alabaster Vase *you use end*
- £2-10 721—Glass Basket and Ash Tray *R. G. B.*
- £2-10 722—Hand-painted Circular Tray *Collis*
- £32-10 723—Chinese Bowl
- £5 724—Mahogany China Cabinet
- £5 725—Arm Chair *Ryan*
- £5-10 726—Two Cushions
- 35/ 727—Tall Chinese Vase *M. Callum*
- £1- 728—Pottery Bowl and Stand
- £1- 729—Tuscan Bird Ornament
- £25 730—Amphora Basket Vase, damaged *V. F.*
- £50 731—Italian Walnut Card Table *A. Geny*
- 732—3-Pce. French Drawing Room Suite, upholstered in Blue Satin Brocade *C. X. J.*
- 733—Three Cushions
- £4-10 734—Statuette *Wills*
- £2-10 735—Indian Carved Pedestal *Spencer*
- £4 736—Brass Pedestal *D. Sayth*
- £11-10 737—Brass Bowl
- £4-15 738—Amphora Jardiniere *Key*
- £8-10 739—Indian Carved Pedestal *La Framy*
- £2-10 740—Large Chinese Vase *Whelan*
- £2-10 741—Ebon. Carved Pedestal *Spencer*
- £13 742—Four Sets Curtains, Drapings and Poles *M. O. O.*
- 35/ 743—Indian Figure *Wills*
- £25 744—Blackwood Pedestal *G. J. P.*
- £11 745—Mahogany Arm Chair *Rosa Smith*
- £18 746—Arab Figure *R. A. Sanderman*
- £10 747—Mahogany Music Cabinet *V. Sayth*
- £1 748—Gipsy Figure *P. David*
- £23-10 749—Blackwood Pedestal *Hulchinson*
- £16 750—Mahogany Arm Chair *Rosa Smith*
- 751—Satsuma Vase *V. S.*



MUSIC ROOM—Lots 636-834

752—Pedestal

753—Horizontal Grand Piano, by Julius Bluthner, Leipzig.

This Piano is in Perfect Order and has had Expert
Attention every 6 months

754—Duet Stool

755—Music

756—Piano Stool, Walnut

757—Arm Chair *V. James*

758—Mahogany Wall Mirror *J. Collis*

£5, 10 759—Bronze Figure, "Esmeralda" *Wills*

760—Pedestal

£6 761—Walnut Coal Scuttle

35 762—Metal Vase

£12 763—Mahogany Drawing Room Chair

£7 764—Austrian Figures *G. J. V.*

£16 765—Inlaid Mahogany Occasional Table *M. Mahon*

£12 766—Mahogany Drawing Room Chair *F. Taylor*

£21 767—Mahogany Arm Chair

£11 768—Walnut Drawing Chair *M. Mahon*

£15 769—Mahogany Inlaid Arm Chair (damaged)

£11 770—Mahogany Drawing Room Table *Enderlein*

771—Animal Figures

£3 772—Ornamental Flower Bowl

773—Finger Bowl and Stand

774—Pair (Fancy Bowls

£32 775—Inlaid Mahogany Drawing Room Chair, upholstered
Satin Brocade *G. J. P.*

£20 776—Mahogany Arm Chair, Satin Brocade *V. S.*

30 777—Metal Bowl and Bases *R. J. V. F.*

£12 778—Inlaid Mahogany Occasional Table

£11 779—Wing Arm Chair, Tapestry Cover *G. J. B.*

£20 780—Rosewood Arm Chair *V. S.*

£20 781—Wing Arm Chair, Satin Brocade Covered *G. Rumbold*

782—Pair Hearth Rugs

£37-10 783—Wilton Carpet, 30ft. x 15ft., in excellent condition *M. Mahon*

784—

785—

£6-10 786—Pair Water Colours *J. M.*

£2 787—Painting by Gladstone Eyre *M. Mahon*

- 357 788—Hand Painted Mirror *M. King*
 12/6 789—Picture *Caruachiel*
 790—Oil Painting by Gavagniny *C.*
 729 791—Pair Italian Chandlebra Mirrors *H. Jett*
 2.13 792—Painting "Tring Park Herts"
 H-10 793—Pair Oil Paintings by Wallmer
 794—Painting by R. Iserwood
 795—Bas-relief *H. J. F.*
 73.15 796—Painting "A street in Bulah" *A. Bishop*
 797—Hand Painted Wall Plate *A. S.*
 798—Hand Painted Wall Plate *A. B.*
 799—Hand Painted Wall Plate " "
 800—Wall Vase
 2.5. 801—Wall Plate *Worsman*
 802—Picture
 803—Picture and Opal
 5.10 804—Wall Ornament *Hulchinson*
 805—Four Hand Painted Opals
 806—Wall Ornament
 807—Painting by A. Jebbitt
 808—Painting by K. Luffsmann
 809—Painting
 810—Wall Mirror, Hand Painted
 811—Two Hand Painted Opals
 812—
 813—
 814—
 815—
 816—
 817—
 818—
 819—
 820—
 821—
 822—
 823—
 824—
 825—

Morning Room

- 826—Bronze Figures
 827—Pedestal
 12 828—Walnut Cabinet
 12 829—Walnut Dining Chair
 830—Bronze Figure
 831—Pedestal

£ 4-10832—Lustre Vase

833—Jardiniere

834—Vases and Ornaments

835—Statuette

836—Inlaid Walnut Music Cabinet

837—Morris Arm Chair

838—Spring Rocker

839—Drop Side Table

840—Webster's Dictionary

841—Pedestal Table

842—Secretaire

843—7-Piece Dining Suite, in Saddlebag

844—Cedar Bookcase and Secretaire

845—Walnut Overmantle

846—Two Crescent China Vases

847—Pair Carved Soapstone Vases

848—Pair Cloisonne Vases

849—Pair Vases

850—Marble Clock, French Action

851—Pair Vases

852—Carved Ebon. Pedestal

853—Precedent Wireless, 5 valves

854—Ginger Jar

855—Pair Dresden Lamps

856—Benares Brass Jardiniere

857—Pair Doulton Finger Bowls

858—Pedestal Table

859—Tapestry Covered Couch

860—Inlaid Italian Walnut Drawing Room Table

861—Oil Painting

862—Oil Painting by A. E. Chambers, 1887

863—Oil Painting, "Still Life"

864—Three Paintings

865—Five Pictures

866—Three Celographs

867—Water Colour

868—Occasional Table

869—Carver Pedestal


870—Floor Mats

871—Carpet on Floor

872—Barometer

873—Books

874—Books



Cambridge Press,
214 Hargreaves Street,
Bendigo.

