

2205-171

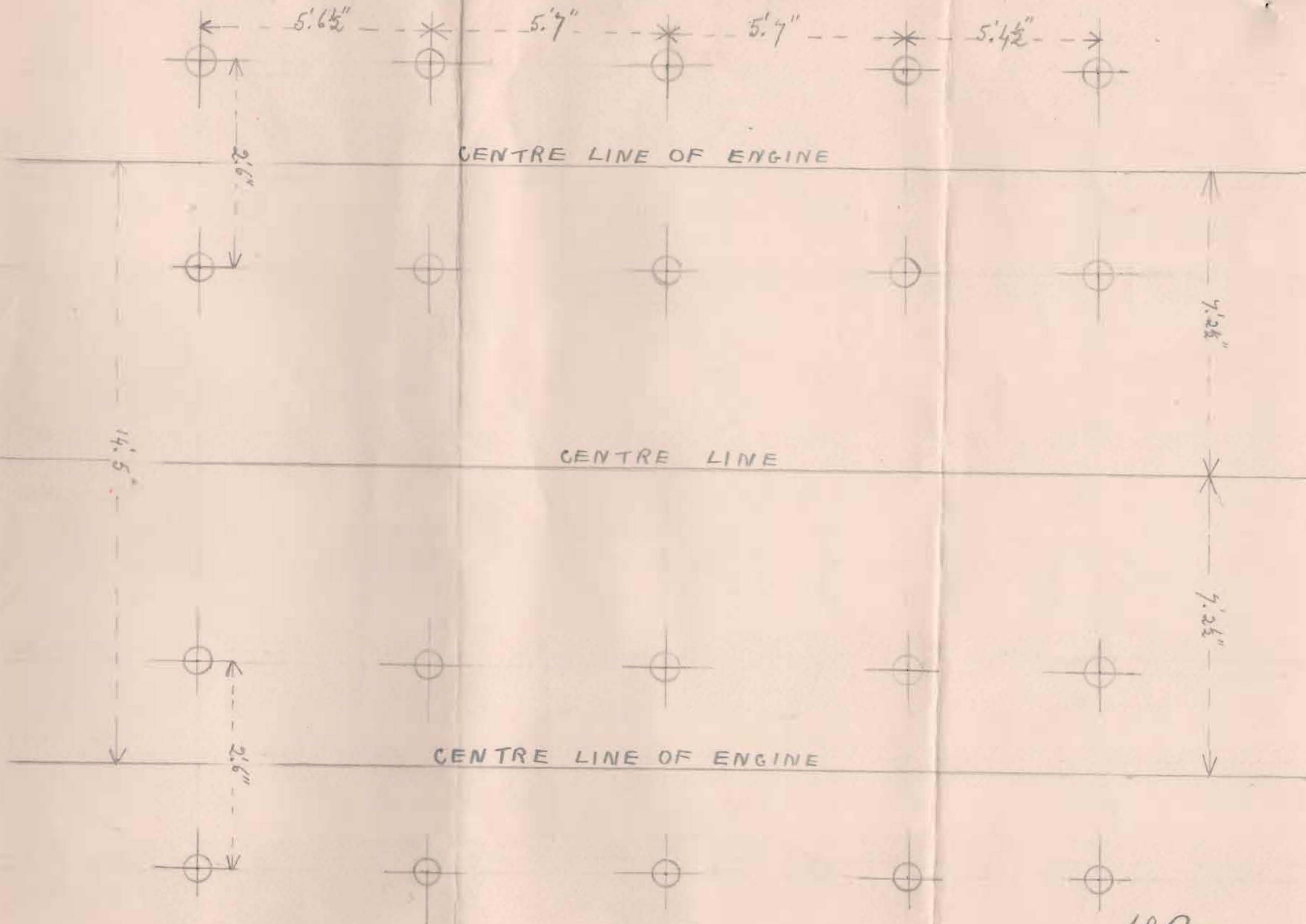
NORTH DEBORAH MINING COMPANY
NO LIABILITY

Ground Plan

• Jamel plan re GREAT SOUTHERN.
24" minerals

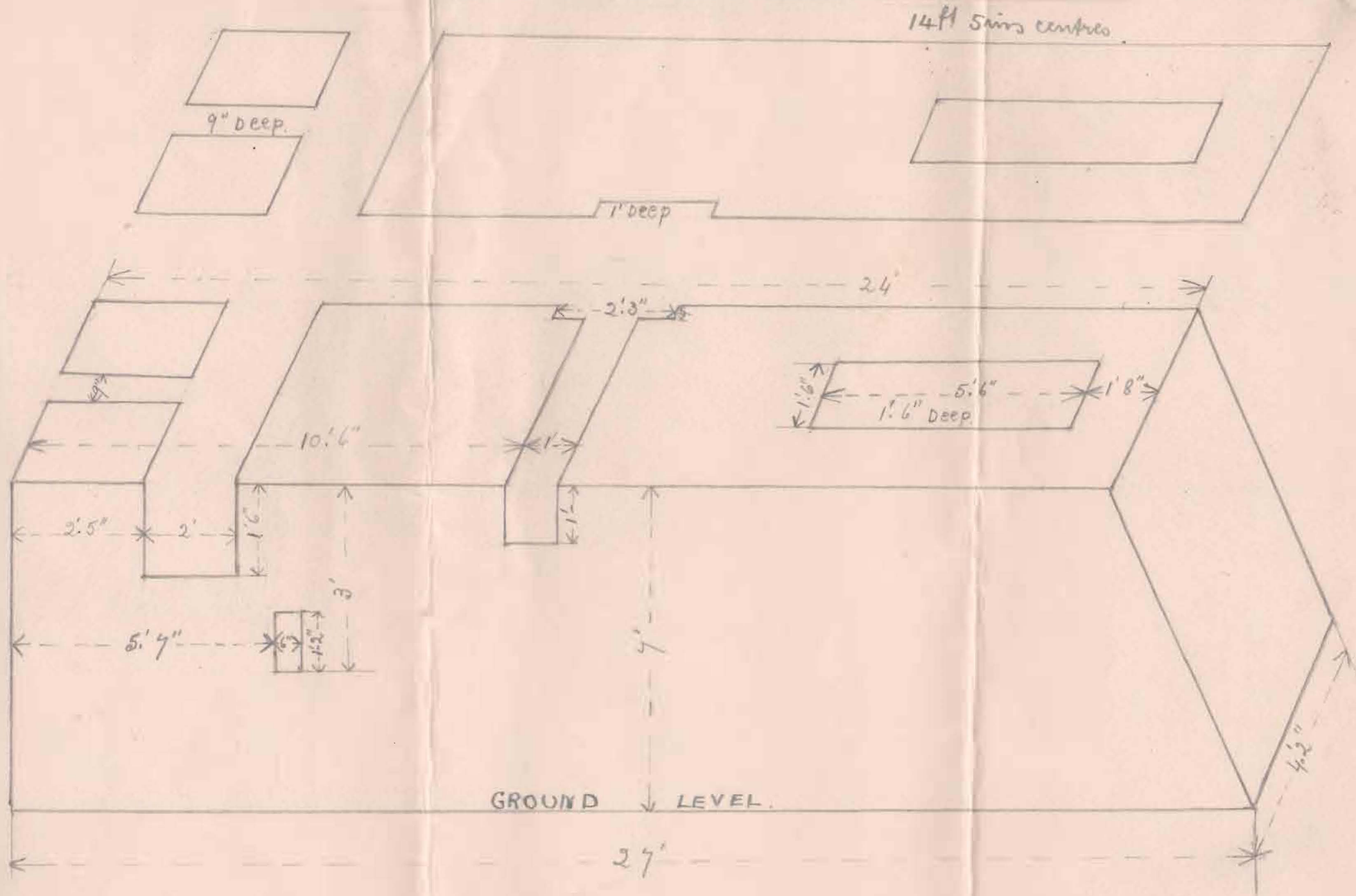
5 NOV 1947

LAYOUT OF HOLDING-DOWN BOLTS



A. Roy
3rd Nov 1947

LAYOUT OF ENGINE BEDS.



Al Roy
3rd Nov 1947

CAMPBELL STREET, EAGLEHAWK,
Roy & Toma**CONTRACTORS**

MACHINERY AND BUILDINGS ERECTED AND DISMANTLED.

3rd November 1947.

N North Deborah Mining Co.
Bendigo.

Particulars of 24" cylinder Winding
Engine taken out at Great Southern
Mine.

All parts marked in white paint relating
to east or west side Engine, as Engines were
standing at Great Southern Mine - Drums
faced north - Drivers side faced east.

Gauge made of piping with trammel point
at 14ft 5ins centres and extra length
attached so as to obtain diagonals.

Trammel points at back cylinder centres
and front crank-shaft bed plates.
Diagonals from cylinders to front bed
plates.

All marked with centre punch and
white paint, rings and arrows.

A. L. Roy