

Melbourne
April 28th 1875

New Zealand & Petchonnam
Architects
Dandhurst

Gentlemen

I have sent the whole
of your Ironwork per Goods Train
this day: I herewith inclose duplicate
Receipts. Trusting that you may re-
ceive them all safe. I have the honor
to be

Gentlemen

Yours respectfully

J. Alexander
Genl. Secy

Genl. Secy

Instruction

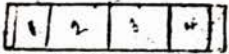
The Columns are numbered from Left to Right as per Plan

The Brackets are numbered to correspond with Columns. Thus say Column is numbered 8 on one side and 9 on the other side, you will find a Bracket numbered to correspond with ~~the~~ ones on the Columns.

The Screws to fit the Brackets are in the Case, in 2 packages; one package is marked for the large Brackets, the other package is marked for the small Brackets. There are also, in the Case the Legs, to screw into the upper Columns to fit the Horizontal Is.

The ornament in the Case is for the Bottom of Bracket No 15 which goes against the wall

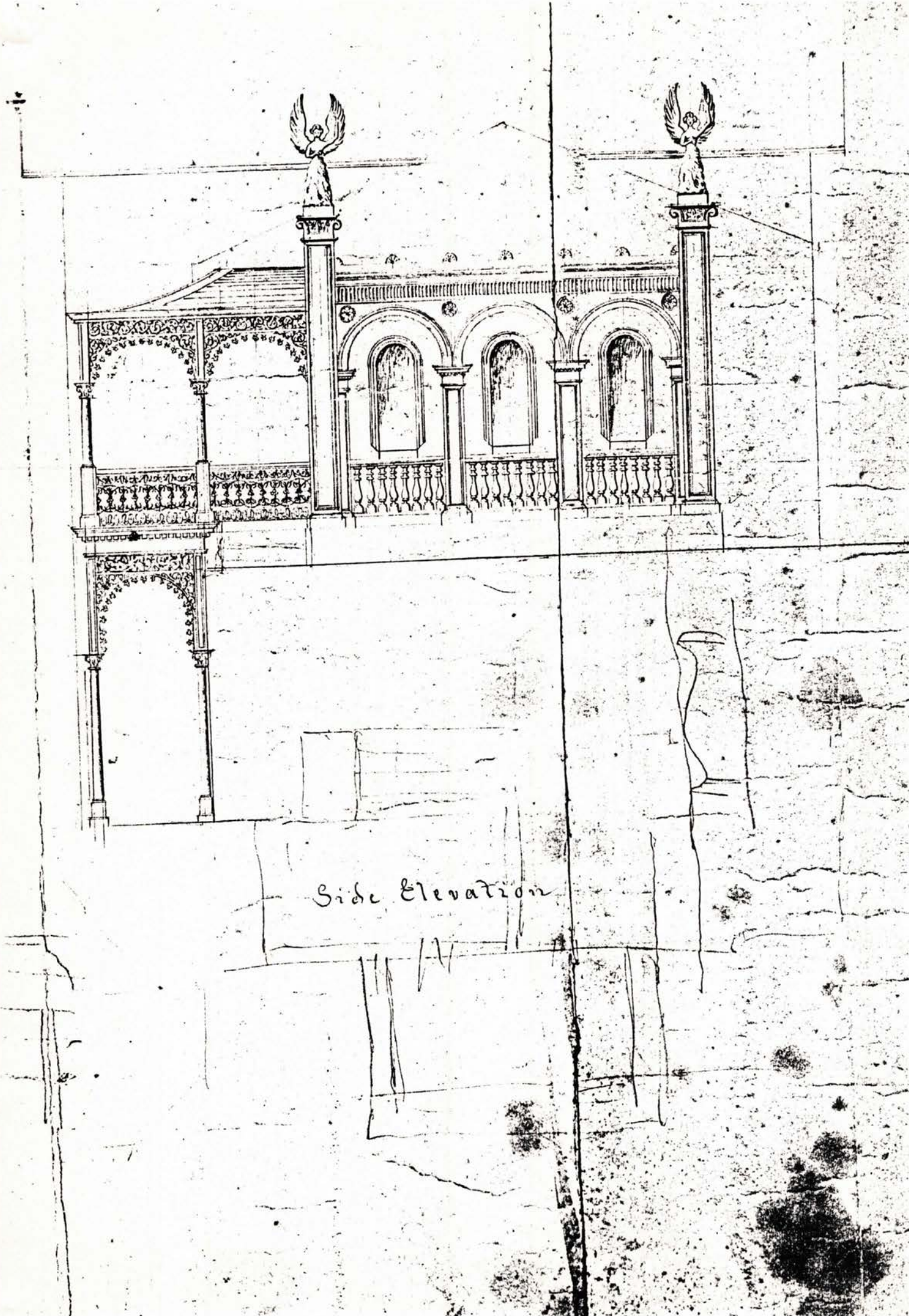
To fill the opening of 7 ft. requires the large Panel and 2 of the smallest pieces one on each side



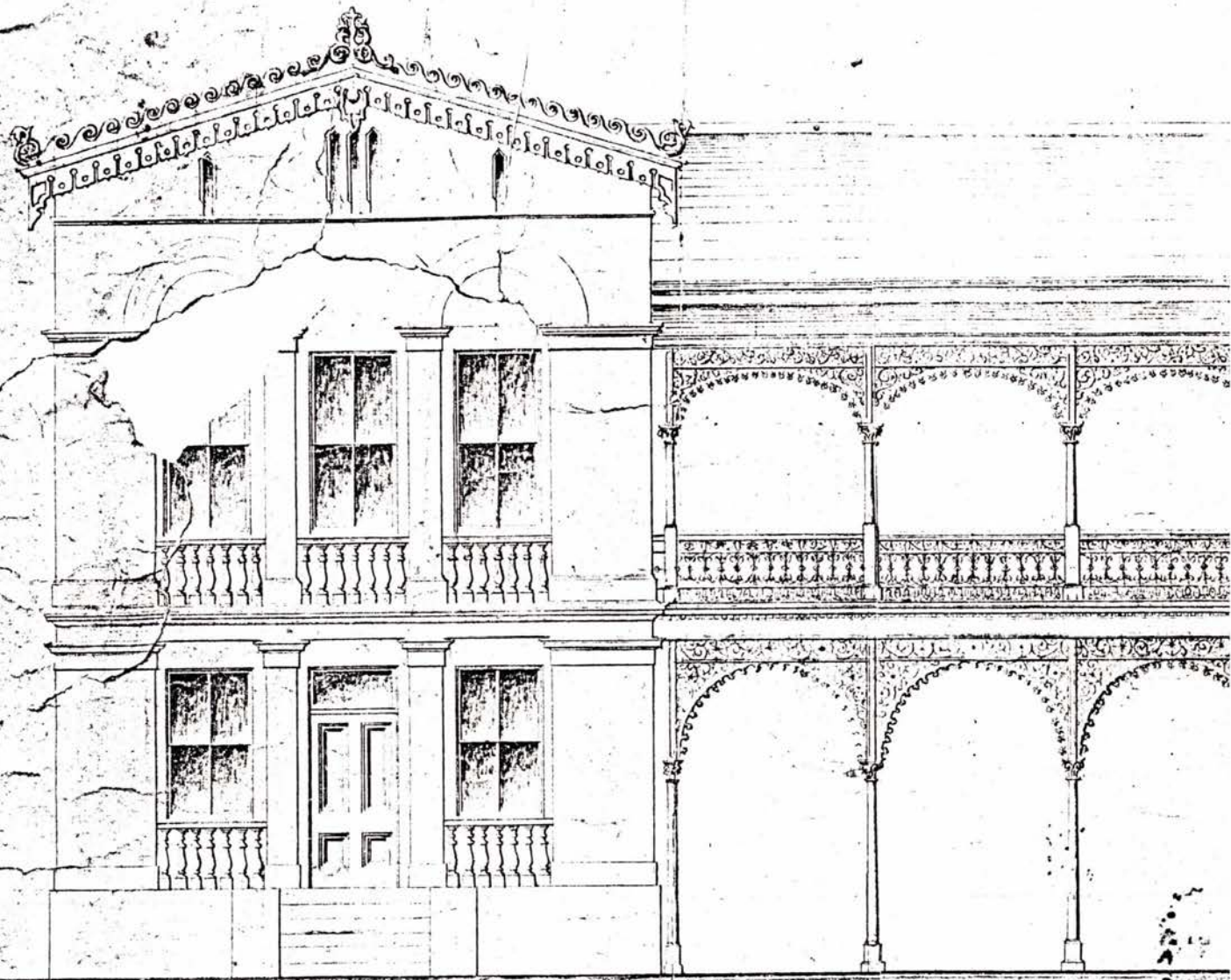
The Cap will not be sent until the commencement of the week

If you have the Certificates ready, could you oblige me by forwarding them to Mr. Somell, which will save the time occupied, in its transiting from Sandhurst to Melbourne, and again from Melbourne to Sandhurst. by doing me this favor you would oblige

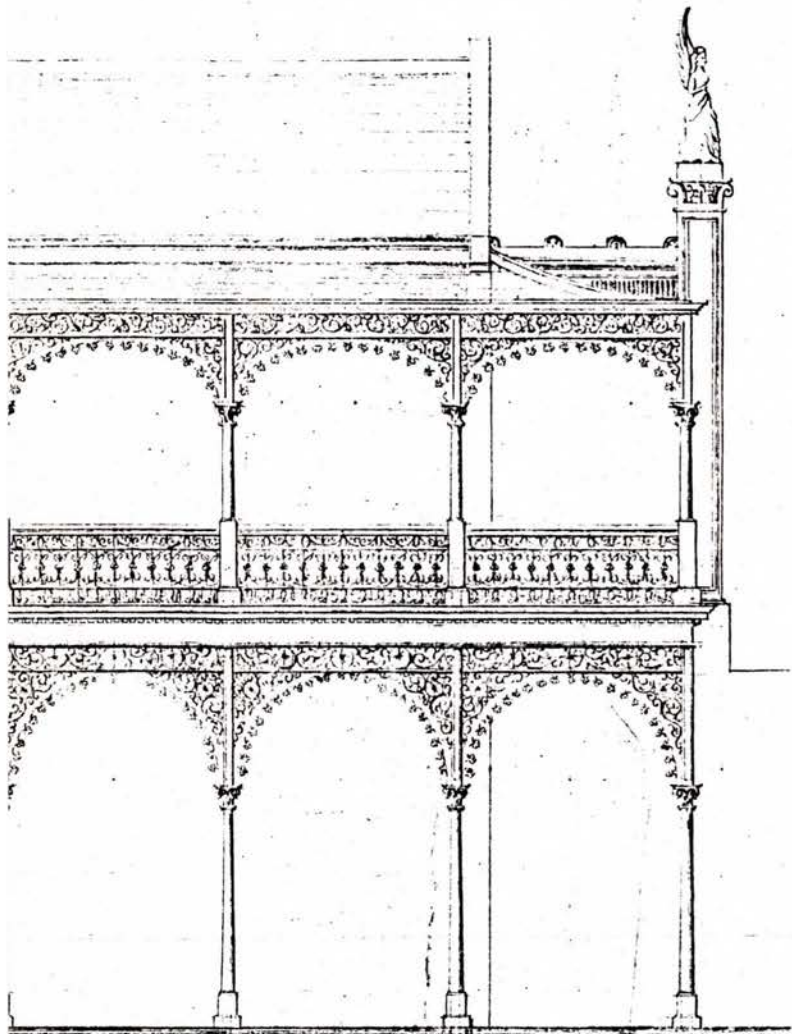
Yours respectfully
G. Alexander Swinburn
(G.A.S.)



Side Elevation



Front Elevation



Scale 4 feet to the Inch

